

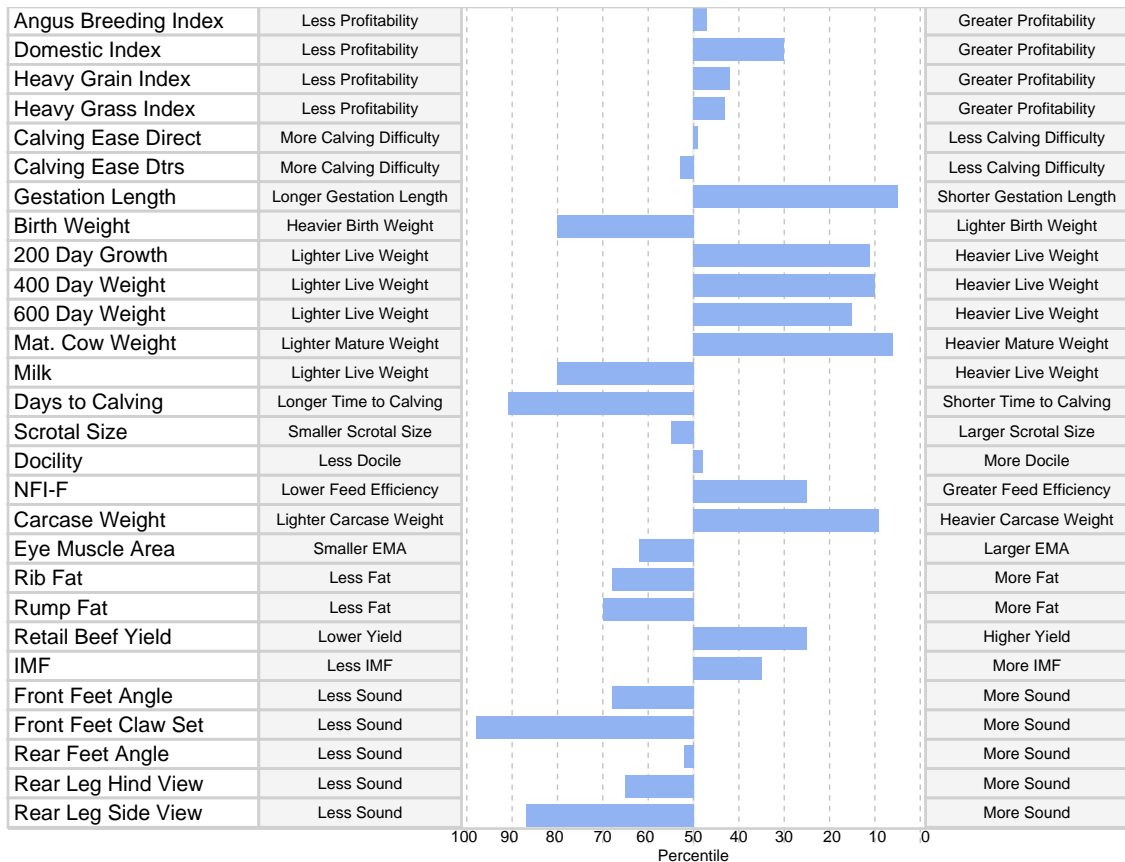
# Angus Australia - Animal Report



**Animal ID** OMCN19  
**Animal Name** OLD MAN CREEK N19<sup>SV</sup>  
**Tattoo** N19  
**Date of Birth** 07/08/2017  
**Inventory Season** Unknown  
**Sex** Male  
**Status** Active  
**Colour** Black  
**Register** HBR  
**DNA Profile Stored** SNP  
**Parentage Verification** Sire verified  
**Genetic Conditions** AMFU, CAFU, DDFU, NHFU

CONNEALY CONSENSUS#  
 CONNEALY CONSENSUS 7229<sup>SV</sup>  
 BLUE LILLY OF CONANGA 16#  
**Sire: V A R GENERATION 2100<sup>PV</sup>**  
 CONNEALY ONWARD#  
 SANDPOINT BLACKBIRD 8809#  
 RIVERBEND BLACKBIRD 4301#  
 B/R NEW DESIGN 036#  
 MERRIC RIVERS NEW DESIGN T149<sup>SV</sup>  
 MERRIC RIVERS Q4#  
**Dam: LANDFALL DAINTY E514#**  
 TE MANIA SHEEN S155#  
 LANDFALL DAINTY Z186#  
 LANDFALL DAINTY X74#

Mid-February 2019 Angus Australia BREEDPLAN															
Angus	Calving Ease			Growth						Fertility		Temp	Feed		
	Calving Ease Dir	Calving Ease Dtrs	Gest. Length	Birth Wt	200 Day Growth	400 Day Weight	600 Day Weight	Mat. Cow Weight	Milk	Days to Calving	Scrotal Size	Docility	NFI-F		
<b>EBV</b>	<b>+0.4</b>	<b>+0.4</b>	<b>-7.7</b>	<b>+5.6</b>	<b>+53</b>	<b>+95</b>	<b>+122</b>	<b>+121</b>	<b>+12</b>	<b>-1.5</b>	<b>+1.7</b>	<b>+5</b>	<b>-0.02</b>		
Acc	61%	50%	85%	75%	72%	71%	71%	67%	61%	42%	73%	56%	53%		
Perc	50	53	5	80	11	10	15	6	80	91	55	48	25		
Angus	Carcase						Structural					Selection Index			
	Carcase Weight	EMA	Rib Fat	Rump Fat	RBY	IMF	FA	FC	RA	RH	RS	Angus Breeding	Domestic	Heavy Grain	Heavy Grass
<b>EBV</b>	<b>+74</b>	<b>+4.4</b>	<b>-0.5</b>	<b>-0.8</b>	<b>+1.0</b>	<b>+2.1</b>	<b>-3</b>	<b>-29</b>	<b>-2</b>	<b>-1.1</b>	<b>-1.4</b>	<b>\$117</b>	<b>\$115</b>	<b>\$126</b>	<b>\$115</b>
Acc	63%	63%	65%	63%	59%	62%	48%	46%	41%	28%	37%	-	-	-	-
Perc	9	62	68	70	25	35	68	98	52	65	87	47	30	42	43
<b>Traits:</b> GL,BWT,200WT,400WT,SC,Scan(EMA,Rib,Rump,IMF),DOC,															
<b>Stats:</b> Herds: 0 Prog Anal: 0															



© 2019 Angus Australia

**Important Notice**

The information contained in this animal listing has been compiled from databases owned by Angus Australia and has been designed, created and published by Angus Australia. The information is owned by Angus Australia and has been published for information purposes only. No section or individual item may be reproduced or used by any person or other legal entity for any commercial purpose whatsoever, without the prior express consent of Angus Australia.

# Angus Australia - Animal Report

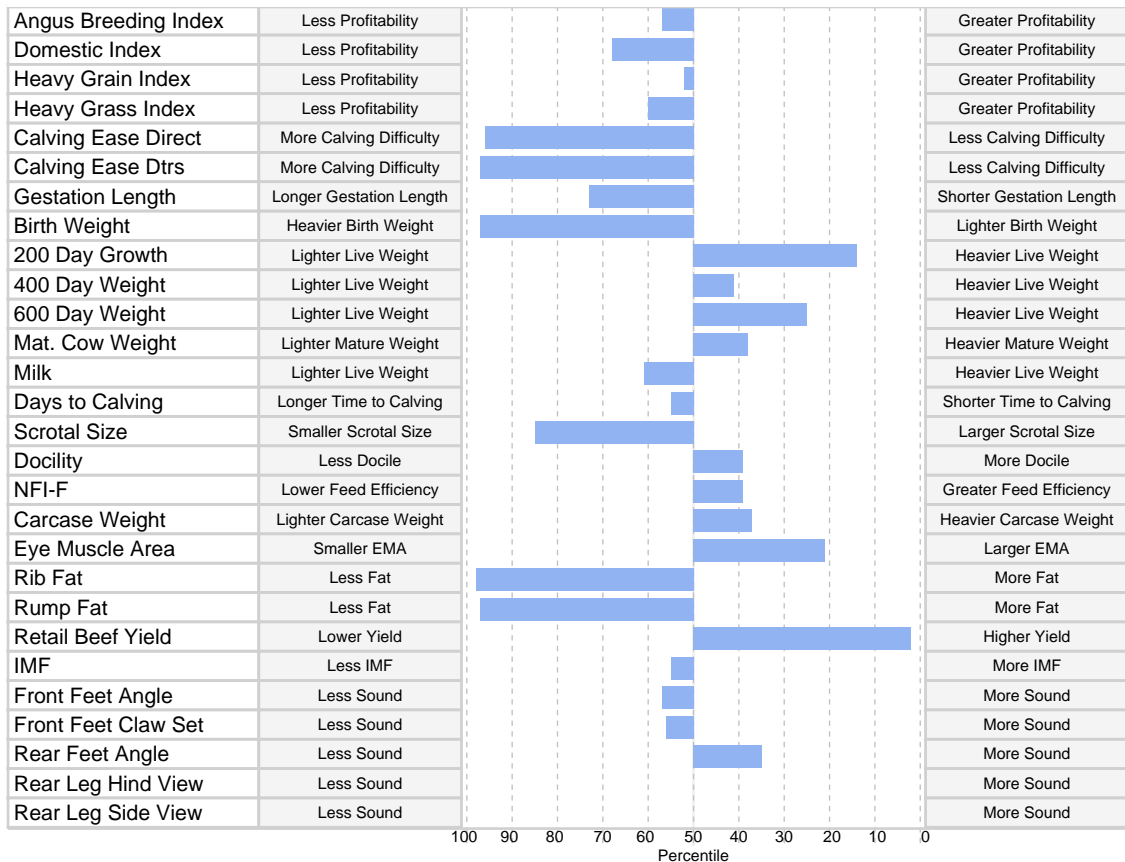


**Animal ID** OMCN45  
**Animal Name** OLD MAN CREEK N45<sup>SV</sup>  
**Tattoo** N45  
**Date of Birth** 17/09/2017  
**Inventory Season** Unknown  
**Sex** Male  
**Status** Active  
**Colour** Black  
**Register** APR  
**DNA Profile Stored** SNP  
**Parentage Verification** Sire verified  
**Genetic Conditions** AMFU, CAFU, DDFU, NHFU

ARDROSSAN EQUATOR A241<sup>PV</sup>  
 BOOROOMOOKA FRANKEL F510<sup>PV</sup>  
 BOOROOMOOKA TRACEY Z5<sup>PV</sup>  
**Sire: DULVERTON JACKPOT J267<sup>SV</sup>**  
 FIVE STAR YARAMDU Y29<sup>SV</sup>  
 DULVERTON DELL B112<sup>#</sup>  
 DULVERTON DELL Z067<sup>#</sup>  
 B/R DESTINATION 727-928<sup>#</sup>  
 B/R DESTINATION 928-7222<sup>SV</sup>  
 B/R RUBY 1224<sup>#</sup>  
**Dam: COOLANA J794<sup>#</sup>**  
 COOLANA RIGHT TIME C71<sup>PV</sup>  
 COOLANA F734<sup>#</sup>  
 COOLANA Y264<sup>#</sup>

## Mid-February 2019 Angus Australia BREEDPLAN

Angus	Calving Ease			Growth						Fertility		Temp	Feed			
	Calving Ease Dir	Calving Ease Dtrs	Gest. Length	Birth Wt	200 Day Growth	400 Day Weight	600 Day Weight	Mat. Cow Weight	Milk	Days to Calving	Scrotal Size	Docility	NFI-F			
<b>EBV</b>	<b>-4.8</b>	<b>-3.8</b>	<b>-2.8</b>	<b>+7.4</b>	<b>+52</b>	<b>+84</b>	<b>+117</b>	<b>+96</b>	<b>+14</b>	<b>-4.1</b>	<b>+1.0</b>	<b>+7</b>	<b>+0.10</b>			
Acc	55%	38%	73%	73%	70%	69%	69%	64%	55%	38%	71%	46%	55%			
Perc	96	97	73	97	14	41	25	38	61	55	85	39	39			
Angus	Carcase						Structural					Selection Index				
	Carcase Weight	EMA	Rib Fat	Rump Fat	RBY	IMF	FA	FC	RA	RH	RS	Angus Breeding	Domestic	Heavy Grain	Heavy Grass	
<b>EBV</b>	<b>+64</b>	<b>+6.9</b>	<b>-2.4</b>	<b>-2.6</b>	<b>+2.3</b>	<b>+1.6</b>	<b>+0</b>	<b>-1</b>	<b>+2</b>	<b>-</b>	<b>-</b>	<b>\$112</b>	<b>\$104</b>	<b>\$119</b>	<b>\$109</b>	
Acc	64%	62%	65%	62%	59%	61%	41%	35%	33%	-	-	-	-	-	-	
Perc	37	21	98	97	2	55	57	56	35	-	-	57	68	52	60	
<b>Traits:</b> BWT,200WT,400WT,SC,Scan(EMA,Rib,Rump,IMF),DOC,Genomics													<b>Stats:</b> Herds: 0 Prog Anal: 0			



© 2019 Angus Australia

### Important Notice

The information contained in this animal listing has been compiled from databases owned by Angus Australia and has been designed, created and published by Angus Australia. The information is owned by Angus Australia and has been published for information purposes only. No section or individual item may be reproduced or used by any person or other legal entity for any commercial purpose whatsoever, without the prior express consent of Angus Australia.

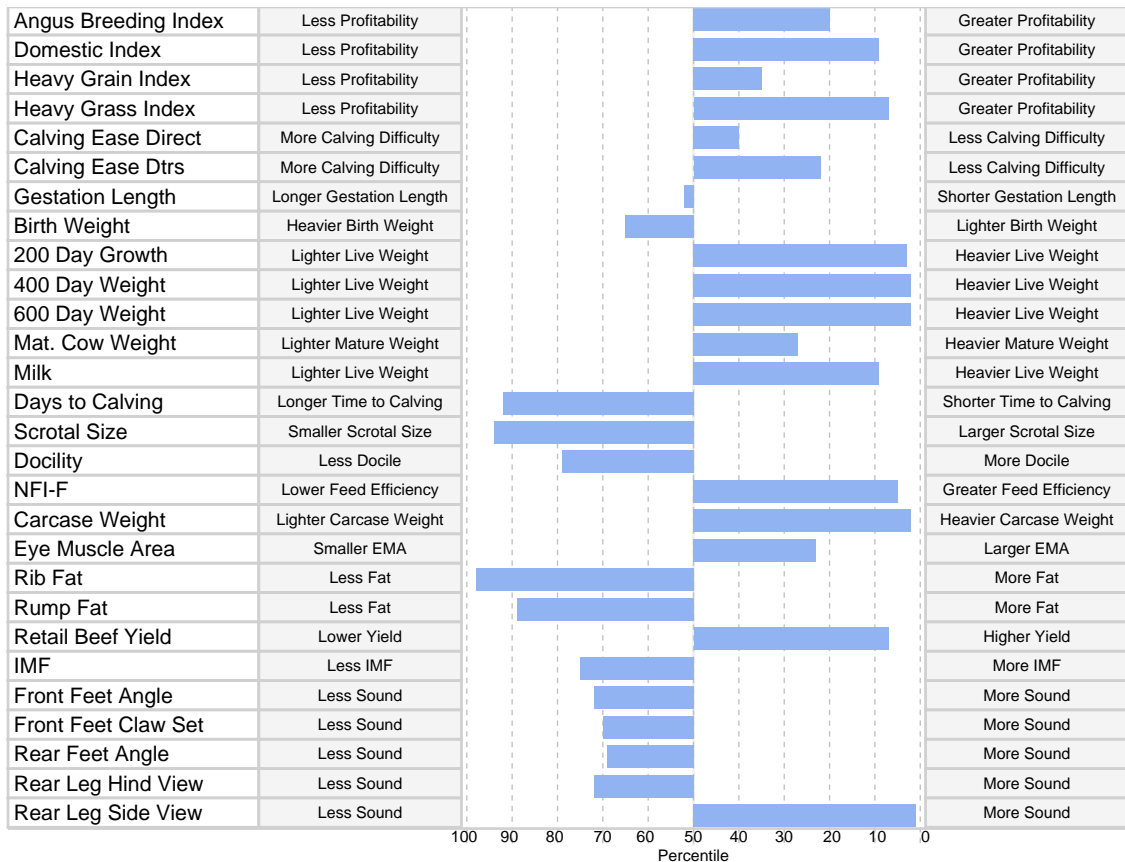
# Angus Australia - Animal Report



**Animal ID** OMCN56  
**Animal Name** OLD MAN CREEK N56<sup>PV</sup>  
**Tattoo** N56  
**Date of Birth** 19/09/2017  
**Inventory Season** Unknown  
**Sex** Male  
**Status** Active  
**Colour** Black  
**Register** HBR  
**DNA Profile Stored** SNP  
**Parentage Verification** Parent verified  
**Genetic Conditions** AMFU, CAFU, DDFU, NHFU

C A FUTURE DIRECTION 5321#  
 BASIN FRANCHISE P142#  
 BASIN CHLOE 812L#  
**Sire: EF COMPLEMENT 8088<sup>PV</sup>**  
 BR MIDLAND#  
 EF EVERELDA ENTENSE 6117#  
 H F EVERELDA ENTENSE 869#  
 HYLIN RIGHT TIME 338#  
 BOOROOMOOKA RIGHT TIME D498<sup>SV</sup>  
 BOOROOMOOKA UNKA A335#  
**Dam: MERRILLA G2<sup>SV</sup>**  
 STRATHEWEN IN FOCUS B45<sup>PV</sup>  
 MERRILLA JADE E06#  
 STRATHEWEN JADE X15<sup>SV</sup>

Mid-February 2019 Angus Australia BREEDPLAN															
Angus	Calving Ease				Growth						Fertility		Temp	Feed	
	Calving Ease Dir	Calving Ease Dtrs	Gest. Length	Birth Wt	200 Day Growth	400 Day Weight	600 Day Weight	Mat. Cow Weight	Milk	Days to Calving	Scrotal Size	Docility	NFI-F		
<b>EBV</b>	<b>+1.0</b>	<b>+2.0</b>	<b>-3.9</b>	<b>+4.9</b>	<b>+57</b>	<b>+104</b>	<b>+140</b>	<b>+102</b>	<b>+21</b>	<b>-1.3</b>	<b>+0.6</b>	<b>-5</b>	<b>-0.28</b>		
Acc	61%	51%	84%	72%	71%	70%	70%	68%	62%	42%	72%	54%	55%		
Perc	40	22	52	65	3	2	2	27	9	92	94	79	5		
Angus	Carcase						Structural					Selection Index			
	Carcase Weight	EMA	Rib Fat	Rump Fat	RBY	IMF	FA	FC	RA	RH	RS	Angus Breeding	Domestic	Heavy Grain	Heavy Grass
<b>EBV</b>	<b>+81</b>	<b>+6.8</b>	<b>-2.3</b>	<b>-1.8</b>	<b>+1.7</b>	<b>+1.0</b>	<b>-5</b>	<b>-7</b>	<b>-5</b>	<b>-1.4</b>	<b>+0.6</b>	<b>\$130</b>	<b>\$124</b>	<b>\$131</b>	<b>\$133</b>
Acc	63%	62%	65%	63%	59%	61%	50%	46%	43%	31%	40%	-	-	-	-
Perc	2	23	98	89	7	75	72	70	69	72	1	20	9	35	7
<b>Traits:</b> GL,BWT,200WT,400WT,SC,Scan(EMA,Rib,Rump,IMF),DOC,										<b>Stats:</b> Herds: 0 Prog Anal: 0					



© 2019 Angus Australia

**Important Notice**

The information contained in this animal listing has been compiled from databases owned by Angus Australia and has been designed, created and published by Angus Australia. The information is owned by Angus Australia and has been published for information purposes only. No section or individual item may be reproduced or used by any person or other legal entity for any commercial purpose whatsoever, without the prior express consent of Angus Australia.