



“6th Annual Sale”

**11 South Devon Bulls
17 South Devon Females
3 Droughtmaster Bulls**

Friday 8th February 2019 11:00am (SA time)

AuctionsPlus Only

**David & Rochelle Leese
7137 RM Williams Way, Jamestown SA 5491
Home 0886641702 David Mobile 0417851831**

Inspection Day Friday 1st February SA Beef Week



Fertility - Low Birth Weights – Good Growth – Excellent Carcass

www.davelle.com.au

“Profitable beef cattle, that’s what we want. Cattle that do it easy and improve profit”

Welcome to our 6th Annual Sale.

Bull numbers have been reduced due to seasonal conditions. There are bulls genetically superior with performance figures to back them up and bulls from well performing family lines. South Devon and Droughtmaster bulls will be offered. The female offering is strong from well proven cows to yearling heifers.

USA semen import MJB Cool 548C first bulls are offered. They are an outcross and have performed well. A retained son Davelle Cool Beau N51, to our knowledge, has become the first bull on the \$Profit index to break the \$30,000 mark at \$32,161.

The \$Profit index has become an important tool for us. The ability to analyze our cattle in a multi breed (including crosses and Stabilizers) and multi-country analysis focusing on the profit drivers within a beef herd has been a significant plus for us. The enormity of \$Profit is huge with over 1,400,000 beef cattle analyzed. For you there is greater assurances in your selection processes. BreedPlan and \$Profit are not comparable. However, if a bull ranks high on BreedPlan and \$Profit then you have greater confidence in his credentials. \$Profit designs “cows that work steers that pay”.

From our research the main driver is Fertility. Then – Low Birth Weights, Good Growth and Excellent Carcass. These encompass our “Breeding Objectives”. The single most important link in the beef production chain is “fertility”.

Davelle South Devons provide a great genetic opportunity, ready to fulfill the needs of the most fastidious beef breeder. They are very efficient cattle that suit the Australian beef industry. As the industry changes to objective measurement the unique combination of early weight gain, high yielding carcasses that have softness and IMF will see the South Devon importance rise.

Davelle Droughtmaster will provide for that hardier animal but with no compromise in their ability to meet market specifications and acceptance. The Droughtmaster is an ideal inclusion into northern herds.

We continue with AuctionsPlus. We like the flexibility it provides buyers and us. We want to sell our cattle at fair and reasonable prices to all stud and commercial breeders, simply and easily. Look through the catalogue, there are great prospects for both stud and commercial breeders.

We will use the SA Beef Week as an inspection day. All sale cattle will be yarded. All we ask is you visit Davelle, inspect our cattle and enjoy the day, we’ll look after you! If you can’t make our SA Beef Week day, please contact us to arrange a day and time that suits.

Due to changes to the BJD requirements to WA, we are now a J-BAS8 herd and as such can continue to sell into WA.

We thank existing clients for your valued support and look forward to meeting new ones.

We have recently updated our website, so please take the time to have a look.



Fertility - Low Birth Weights – Good Growth – Excellent Carcass

www.davelle.com.au

Sale Information

Sale Catalogue Disclaimer – Whilst all due care and attention has been paid to the accuracy in the compilation of this catalogue, neither the vendor nor the selling agent or representative assume any responsibility whatsoever for the correctness, use or interpretation of the information contained in this catalogue. You are encouraged to seek independent verification of any information contained in this catalogue. Photos have been taken by us, there is no preparation or enhancement - they are either in or have just come straight out of the paddock.

Inspection – If you can't make our SA Beef Week day an inspection can be arranged by appointment with the vendor or agent. Please call to arrange.

Health – All cattle have been vaccinated for 7in1 and Pestigard with annual boosters. All animals have been treated with Eprinex or similar in the last 12 months. We are a JBAS 8 equivalent herd for BJD and eligible entry to WA. A copy of our Biosecurity plan can be requested.

Bulls Feeding - All bulls are pasture fed with hay supplementation. No grain feeding. All bulls are run together. We believe in selling bulls that can go straight to work. What you see is how they are and will be.

Rebate – A 3% rebate is offered to outside agents. Please contact Landmark. Agents will need to nominate their client in writing to Landmark Jamestown 24 hours prior the auction.

Buyers Instructions – after the sale please contact the agents or seller.

Registration Transfers – all animals are registered with the South Devon Cattle Society of Australia Inc and the Droughtmaster Stud Breeders Society. If you'd like any purchase/s transferred to you please contact the vendor. Transfers will be free of charge.

NLIS – it will be the responsibility of the purchaser for the NLIS transfer, unless alternate arrangements are made (PIC SA565618).

Delivery – We will work with purchasers and where possible deliver ourselves. We'd appreciate if all cattle are removed from our property at your earliest convenience, unless we've agreed to alternate arrangements. All animals are at the purchaser's risk from the end of the AuctionPlus sale. We can recommend suitable stud stock carriers, being on a main transport route, many prominent carriers frequently pass our gates. For WA buyers we'll cover the Liver Fluke testing costs.

Bulls Fertility Guarantee – We guarantee all bulls to be structurally sound, fertile and capable of natural service when leaving Davelle. Bulls are guaranteed for up to 1 year from the date of sale. Should a bull prove not to be able to perform a replacement bull with an agreed substitute if available or issue a credit equal to the purchase price less salvage value. This credit can be used at further sales. A veterinary certificate must be supplied by the purchaser.

Care of your new bulls and females – We strongly recommend that you insure your new purchases (we recommend contacting Ben Moss at Miller Leese Financial Services 0886641036 who can arrange cover). While every care has been taken in preparing these animals for sale, you will be taking them to a new environment. It is a good idea to leave them in the yards for a few days with some hay to settle then introduce them to the herd. For bulls, it is wise not to put them with the older bulls until settled further.



Fertility - Low Birth Weights – Good Growth – Excellent Carcass

www.davelle.com.au



Australia's Livestock Marketplace

AuctionsPlus Information

This sale is only through AuctionsPlus.

To bid via AuctionsPlus, contact your local agent or register online at least 48 hours prior to the sale commencing. Registration is free and easy, click the register tab on the AuctionsPlus home page. If you are already an AuctionsPlus user simply log in with your user name and password, then click connect to Davelle Sale.

First time users of AuctionsPlus you must "Sign Up" found on the right hand side menu. Remember to have your PIC number and contact details ready when you register.

All of your livestock agents should be able to assist you with bidding in an AuctionsPlus auction if required

www.auctionsplus.com.au

Ph 02 92624222



Agents for this sale are Landmark. For further details please contact –

Gordon Wood 0408813215 Tom Allen 0409048418 Shannon Jaeschke 0437909130

Jamestown Office ph 0886641108 fax 0886641049 email sharon.hagger@landmark.com.au



Fertility - Low Birth Weights – Good Growth – Excellent Carcass

www.davelle.com.au

Our Objectives –

Our first and foremost objective is to grow grass. To utilise we need good efficient converters, we have found this within the South Devon, Droughtmaster and our composites, they are very efficient beef cattle.

The beef cattle we breed for will be – an easy doing, good tempered, fertile animal that shows a lot of capacity – both in the meat it houses and throughout the body, length, medium frame and the willingness to perform under differing conditions.

Females are the backbone of the herd – they need to have a live calf every year, grow that calf quickly so it yields well and is efficient, adding profitability. We believe if you breed for the perfect female, males follow.

We submit data to BreedPlan (South Devon and Droughtmaster) and \$Profit (South Devon and composites), to find these curve bending animals with strong carcass traits. We believe in performance recoding as a tool available. We use all tools to help find animals that meet beef breeders objectives – subjective and objective.

Fertility drives everything!! American beef economists claim fertility and maternal traits are 5 to 10 times more important than any other traits.

Davelle Balanced Breeding targets for low birth weights, good growth and excellent carcass.

Put this together with the attributes of the South Devon, Droughtmaster and composites and sound type, Davelle has a package that is meeting the objectives of the beef industry backed by reliable data.

We will always select animals on functional type and eye appeal first. Then we look to EBV's/ABE's. The EBV/ABE's pattern we are striving looks like this –

Birth Weight	Below average – No bulls are kept over 45kgs BW.
200 Day/Weaning Weight	Average
400 Day/Yearling Weight	Average
600 Day Weight	Average– flattening out growth so breeding females don't get to big
Mature Cow	Average to slightly below average
Milk	Average – we need to be careful if the season dries up.
Carcass Traits	Above Average - all traits to be strongly positive

We want females to peak their growth at around 3 years old. We want animals to put on as much weight as possible with desired carcass traits and then without breeding cows getting too big – efficiency.

Using figures can be fraught with danger. A good understanding is needed. The biggest number is not always the most desirable and sometimes average is best. Indexes help put all of this into context – Vealer, Supermarket, Export and now \$Profit, chose the one that best suits your market.



Fertility - Low Birth Weights – Good Growth – Excellent Carcass

www.davelle.com.au

Performance Recording –

We have seen good improvement in the EBV traits we strive for – low birth weights, good growth and excellent carcass. The November 2018 analysis our Herd Average was –

Gest. Len. (days)	Birth Wt. (kg)	200 Day Wt. (kg)	400 Day Wt. (kg)	600 Day Wt. (kg)	Mat. Cow Wt. (kg)	Milk (kg)	Scrotal Size (cm)	Carcass Wt. (kg)	Eye Muscle Area (sq.cm)	Rib Fat (mm)	Rump Fat (mm)	Retail Beef Yield (%)	IMF %	Vealer Index (\$)	Supermarket Index (\$)	Export Maternal Index (\$)
-1.5	-0.1	+16	+25	+30	+29	-1	+0.8	+26	+1.5	+0.5	+0.7	+0.1	+0.6	+26	+36	+46

South Devon Breed Average for 2016 born calves is –

Gest. Len. (days)	Birth Wt. (kg)	200 Day Wt. (kg)	400 Day Wt. (kg)	600 Day Wt. (kg)	Mat. Cow Wt. (kg)	Milk (kg)	Scrotal Size (cm)	Carcass Wt. (kg)	Eye Muscle Area (sq.cm)	Rib Fat (mm)	Rump Fat (mm)	Retail Beef Yield (%)	IMF %	Vealer Index (\$)	Supermarket Index (\$)	Export Maternal Index (\$)
-0.7	+1.1	+13	+22	+29	+30	+0	+0.6	+19	+0.7	-0.1	-0.1	+0.3	+0.0	+16	+20	+28

We have stated our objectives and work hard to achieve these to give buyers of our cattle confidence in our capabilities. In summary we target the Supermarket Index with emphasis on carcass traits over growth and \$Profit. Sound type is always paramount. Supplying the EBV's to meet the beef industry's needs allows our package to be competitive with any breed.

Black South Devon

We have pursued Black South Devon's importing semen from the USA. Breeders in the US have done all of the hard work upgrading from an Angus base. The US South Devon is very different to the British. We like the US type for their moderation but no compromise on carcass.

Black South Devons are complimentary to British, Euro and Bos Indicus breeds. Remember the "Free Lunch" – hybrid vigour.

A black South Devon bull over an Angus cow is a great cross as proven in the US –

- black coat and British look maintained
- increased weight
- increased EMA
- increased yield
- IMF maintained
- Increased Profit

We feel they offer a tremendous opportunity to the beef producer. The Black South Devon is an alternate "Polled Black British" breed. As a crossbreeding option, they will be ideal as an alternate Black sire for hybrid vigor, F1 females are maternal machines.

Don't discount the enormous opportunity the Black South Devon presents.



Fertility - Low Birth Weights – Good Growth – Excellent Carcass
www.davelle.com.au

Davelle 2018 Royal Adelaide Show Carcase Competition Results

In summary We had 6 steers at this year's competition, 3 prepared by ourselves and 3 at schools (Booleroo, Faith and Westminster).

On Hoof our Heavy Domestic Steer "Ace" came away with a blue ribbon in the Breeders class. Our Export steer "Cool One" came second in the Breeders class.

The steer at Westminster came second in his Schools Heavy Domestic class and the steer from Faith came 5th in his Schools Export class.

On Hoof Davelle steers came away with 4 ribbons.

On Hook our Export Steer came 3rd in the Breeders class and the steer at Booleroo Centre was Reserve Champion Light Weight Carcass.

We've been competing for the last 11 years performing consistently. On Hoof a few ribbons but nothing major. However on Hook -

2007 Reserve Grand Champion Carcass
2011 Grand Champion Carcass
2014 Champion Heavy Domestic Carcass
2016 Reserve Grand Champion Carcass
2017 Reserve Champion Export Carcass
2018 Reserve Champion Lightweight Carcass

We mightn't have the best looking animals on hoof (to some), but get them on hook that all changes! Ultimately that's where we get paid.

We understand what makes a great carcass and breed for it!!



Davelle Ace 13mths 518kg Fats 8/6 EMA 108cm² Class winner Sire Davelle Black Ace K2



Fertility - Low Birth Weights – Good Growth – Excellent Carcass
www.davelle.com.au

SOUTH DEVON BREEDPLAN

EBV's are a tool that will help you make more educated decisions when you are choosing breeding stock. The best way to make use of this information is to first decide your breeding goals and secondly to select animals with EBV's that match those criteria. Only South Devon Group BreedPlan EBV's can be validly compared between herds.

Gestation Length EBV (days) is an estimate of the time from conception to the birth of the calf and is based on AI and hand mating records. Lower (negative) GL EBVs indicate shorter gestation length and therefore easier calving and increased growth after birth.

Birth Weight EBV (kg) is based on the measured birth weight of progeny, adjusted for dam age. The lower the value the lighter the calf at birth and the lower the likelihood of a difficult birth. This is particularly important when selecting sires for use over heifers.

200-Day Growth EBV (kg) is calculated from the weight of progeny taken between 80 and 300 days of age. Values are adjusted to 200 days and for age of dam. This EBV is the best single estimate of an animal's genetic merit for growth to early ages.

400-Day Weight EBV (kg) is calculated from the weight of progeny taken between 301 and 500 days of age, adjusted to 400 days and for age of dam. This EBV is the best single estimate of an animal's genetic merit for yearling weight.

600-Day Weight EBV (kg) is calculated from the weight of progeny taken between 501 and 900 days of age, adjusted to 600 days and for age of dam. This EBV is the best single estimate of an animal's genetic merit for growth beyond yearling age.

Mature Cow Weight EBV (kg) is based on the cow weight when the calf is weighed for weaning, adjusted to 5 years of age. This EBV is an estimate of the genetic difference in cow weight at 5 years of age and is an indicator of growth at later ages and potential feed maintenance requirements of the females in the breeding herd. Steer breeders wishing to grow animals out to a larger weight may also use the Mature Cow Weight EBV.

Milk EBV (kg) is an estimate of an animal's milking ability. For sires, this EBV indicates the effect of the daughter's milking ability, inherited from the sire, on the 200-day weights of her calves. For dams, it indicates her milking ability.

Scrotal Size EBV (cm) is calculated from the circumference of the scrotum taken between 300 and 700 days of age and adjusted to 400 days of age. This EBV is an estimate of an animal's genetic merit for scrotal size. There is also a small negative correlation with age of puberty in female progeny and therefore selection for increased scrotal size will result in reduced age at calving of female progeny.

Carcase Weight EBV (kg) is based on abattoir carcass records and is an indicator of the genetic differences in carcass weight at the standard age of 650 days.

Eye Muscle Area EBV (sq cm) is calculated from measurements from live animal ultrasound scans and from abattoir carcass data, adjusted to a standard 300 kg carcass. This EBV estimates genetic differences in eye muscle area at the 12/13th rib site of a 300 kg dressed carcass. More positive EBVs indicate better muscling on animals. Animals with relatively higher EMA EBVs are expected to produce better muscled and higher percentage yielding progeny at the same carcass weight than will animals with lower EMA EBVs.

Rib Fat and Rump Fat EBVs (mm) are calculated from measurements of subcutaneous fat depth at the 12/13-rib site and the P8 rump site (from live animal ultrasound scans and from abattoir carcasses) and are adjusted to a standard 300 kg carcass. These EBVs are indicators of the genetic differences in fat distribution on a standard 300 kg carcass. Animals with relatively lower fat EBVs are expected to produce leaner progeny at any particular carcass weight than will animals with higher EBVs.

Retail Beef Yield EBV (%) indicates genetic differences between animals for retail yield percentage in a standard 300 kg carcass. Animals with larger EBVs are expected to produce progeny with higher yielding carcasses.



Fertility - Low Birth Weights – Good Growth – Excellent Carcass

www.davelle.com.au

Intramuscular Fat EBV (%) is an estimate of the genetic difference in the percentage of intramuscular fat at the 12/13th rib site in a 300 kg carcass. Depending on market targets, larger more positive values are generally more favourable.

Selection Indexes

South Devon selection indices are calculated for three market specifications, namely Vealer, Supermarket and Export Maternal. These Indices relate to typical South Devon herds in temperate Australia targeting these specifications.

Vealer Index (\$) - Estimates the genetic differences between animals in net profitability per cow joined for an example commercial herd targeting vealer production. Vealers are finished on grass and are marketed at 320 kg live weight (180 kg HSCW and 4 mm P8 fat depth) at 10 months of age. Daughters are retained for breeding. No marbling is required.

Supermarket Index (\$) - Estimates the genetic differences between animals in net profitability per cow joined for an example commercial herd targeting the domestic supermarket trade. Steers are either finished on grass or grain (eg 70 days). Steers are marketed at 450 kg live weight (250 kg HSCW and 12 mm P8 fat depth) at 15 months of age. Daughters are retained for breeding. In response to industry feedback regarding eating quality and tenderness, a small premium has been placed on marbling.

Export Maternal Index (\$) - Estimates the genetic differences between animals in net profitability per cow joined for an example commercial herd targeting steers for the export market being finished off grass or through a mid-fed feeding program (eg 125 days). Steers are assumed marketed at 600 kg live weight (330 kg HSCW and 20 mm P8 fat depth) at 24 months of age. Daughters are retained for breeding. In response to industry feedback regarding eating quality and tenderness, a small premium has been placed on marbling.



Davelle Coll Beau N51 \$Profit 32,161 - Semen Available contact your local supplier or Genetics Australia



Fertility - Low Birth Weights – Good Growth – Excellent Carcass

www.davelle.com.au

\$PROFIT™



What is \$Profit?

The \$Profit Index tells you which bull calves make you the most profit, from birth to slaughter if you retain ownership and keep replacements. It includes the cow traits, fertility, growth, carcass and feed intake.

What does the single number, \$Profit, do for me?

\$Profit helps you compare what different bulls are worth so you can easily find the best bull to improve your herd. Put simply, it does the selection work for you. Instead of working out which of the 20+ EBVs are most helpful to your herd, \$Profit does the analysis for you, and sums it up in one figure.

Profit Explained

Are all small cows really efficient? There seems to be a big disconnect in today's beef industry. On sale day we want heavy, high quality steers to pay the bills. The rest of the time we want efficient cows to keep our costs as low as possible. Simply selecting for smaller cows with no regard for feed efficiency is not the answer. Likewise, selecting for sheer growth with disregard for cost is just as poor of a strategy. The best way to make your cowherd truly efficient, and your calf crop earn more, is to use \$Profit™ ABE (Across Breed EBVs)™. This is the only index in the industry that works on both sides of the ledger (production and cost). Cows that work! Steers that pay!

How \$Profit works:

\$Profit assumes that the average commercial bull will have 100 progeny over its lifetime. The model assumes that you keep 30% of your heifers as replacements and that you retain ownership on the remainder of the calves through finishing and sell on a grid. We realize that many don't retain ownership, but doesn't it make the most sense to select from birth all the way to slaughter?

Our simulation model then factors in all of the effects on both income and expense to come up with a net profit figure for each bull. \$Profit allows you to compare any two bulls and calculate the difference in profit that they are expected to generate in your herd. Let's compare a \$10,000 \$Profit bull to \$6,000 \$Profit bull (the average 2008 born Angus bull). The predicted difference between the bulls is \$4,000 or about \$40 per calf. \$Profit works for us and it will work for you too.

What traits are included in \$Profit:

\$Profit includes nearly every trait that impacts profitability. The effect of most traits on profit is fairly simple to understand. Here is the list of what is included and its effect:

Revenue Traits

Calving Ease = more live calves

Weaning and Yearling weights = more growth & weight for age

Fertility (days to conception) = Earlier conceptions post calving and earlier puberty in heifers

Carcass weight = Heavier carcass weights

Marbling = better meat quality and value

Ribeye Area = value as impacts yield grade

% Retail Product = more yield is more saleable beef



Fertility - Low Birth Weights – Good Growth – Excellent Carcass

www.davelle.com.au

Cost Traits

Cow mature size = in general bigger eats more

Cow intake = more intake costs more

Feedlot feed efficiency = cost of gain

Some traits are not so easily characterized for \$Profit. Milk, for example, is a good thing until you get too much. When over +25, milk ABE has a more negative effect on fertility than it has a positive effect on weaning weight. There are a few traits not yet included in \$Profit: longevity, structure, and disposition. These traits are important but difficult to express in dollars.

\$Profit is the largest breeder owned data base in the industry with over 1,400,000 records - “from herds in the USA, UK, New Zealand and Australia”

SPROFIT Financial index allows you to HAVE IT ALL!

\$Profit EBV Rankings for 2016 Calves:

	Good	Better	Best
Rank %	Average	Top 25%	Top1%
\$Profit	\$6,496	\$8,649	\$13,962

\$Profit Across Breed EBVs

Dare to compare: You cannot afford to make mistakes in your breeding program! Choosing to use sires with incomplete or low value data can unknowingly make your herd less profitable – same work, same cost, poor results - unacceptable. \$Profit ABEs (Across Breed EBVs) are the most reliable and comprehensive EBVs in the industry. They are backed by a large (over a million), long-standing (over 30 years), multi-breed (over 15 breeds) database. Using this system assures you of making sound breeding decisions with minimal risk of failure.

	Good	Better	Best
Rank %	Average	Top 25%	Top1%
BW	2.6	0.8	-3.5
WW	38	45	62
YW	65	77	106
Milk	Preference based on environment		
SC	0.48	0.78	1.51
Mat WT	Preference based on environment		
REA	0.36	0.51	0.90
IMF	0.22	0.40	0.82
Car WT	818	856	886
BF	-0.01	0.00	0.03



Fertility - Low Birth Weights – Good Growth – Excellent Carcass

www.davelle.com.au

Sale Bulls

Lot 1

Davelle J46 Regal M71

DVPM71
DOB 23/8/2016
Polled

BreedPlan – All Indexes Top 5%
BreedPlan – Strong Carcass Traits
\$Profit – Rib Eye Top 1.4%
\$Profit - \$Profit Index Top 4.2%

“Just a really good bull”

BC Progress 315U (P)(B)(USA)
Sire: Davelle Black Envy J46 (P)(B)
Davelle D8 Elle F57 (P)

Lincoln Qantas 4Q (P)
Dam: Lincoln Rose 24 (P)
Lincoln Rose 8 (P)

SOUTH DEVON GROUP BREEDPLAN	Gest. Len.	Birth Wt.	200 Day Wt.	400 Day Wt.	600 Day Wt.	Mat. Cow Wt.	Milk (kg)	Scrotal Size (cm)	Carcass Wt. (kg)	Eye Muscle Area (sq.cm)	Rib Fat (mm)	Rump Fat (mm)	Retail Beef Yield (%)	IMF %	Vealer Index (\$)	Supermarket Index (\$)	Export Maternal Index (\$)
	(days)	(kg)	(kg)	(kg)	(kg)	(kg)	(kg)	(cm)	(kg)	(sq.cm)	(mm)	(mm)	(%)	(%)	(\$)	(\$)	(\$)
BreedPlan EBV	-2.2	-0.7	+17	+31	+41	+33	-1	+2.2	+32	+1.8	+0.6	+0.9	+0.1	+0.6	+\$34	+\$50	+\$66
Acc	53%	75%	72%	70%	70%	61%	52%	72%	61%	49%	59%	59%	56%	49%	5%	5%	5%
Rank Top	5%	15%	30%	20%	25%	45%		1%	10%	10%	10%	10%	10%	5%	5%	5%	5%

* SPROFIT *	Birth Weight	Weaning Weight	Yearling Weight	Milk	Scrotal Cir	Mature Weight	Rib Eye Area	IMF	Carcass Weight	Back Fat	\$Profit
	(kg)	(kg)	(kg)	(kg)	(cm)	(kg)	(sq.cm)	(%)	(kg)	(mm)	(\$)
\$Profit ABE	+3.2	+41	+71	+22	+0.38	+19	+0.61	+0.29	837	-0.03	16,220
Rank Top	41.5%	27.6%	16.8%	24.7%	34%	54.6%	1.4%	8.3%		31.7%	4.2%

Comments – Offered in 2017. We think very highly of this bull and his pedigree that we kept him to use within our herd. A son from South Devon “royalty”. Rose at 18 years keeps producing the good ones. A well put together moderate bull. Low birthweight, average growth and excellent carcass and we know he works!



Fertility - Low Birth Weights – Good Growth – Excellent Carcass

www.davelle.com.au

Lot 2

Davelle United Prime N4

DVPN4
DOB 21/3/2017
Polled

BreedPlan – Supermarket Index Top 10%
BreedPlan – Birth Weight Top 10%
\$Profit – IMF Top 13.9%
\$Profit – Yearling Weight Top 19.3%

“Allrounder”

Sire: MJB Romeo 125R (P)(B)(USA)
MJB United 333U (P)(USA)
MJB Nikki 3691N (P)(USA)

Dam: Davelle Fearless 2nd (P)
Davelle Fearless Penny J3 (P)
Davelle Prog Penny G4 (P)

SOUTH DEVON GROUP BREEDPLAN	Gest. Len.	Birth Wt.	200 Day Wt.	400 Day Wt.	600 Day Wt.	Mat. Cow Wt.	Milk (kg)	Scrotal Size (cm)	Carcass Wt. (kg)	Eye Muscle Area (sq.cm)	Rib Fat (mm)	Rump Fat (mm)	Retail Beef Yield (%)	IMF (%)	Vealer Index (\$)	Supermarket Index (\$)	Export Maternal Index (\$)
	(days)	(kg)	(kg)	(kg)	(kg)	(kg)	(kg)	(cm)	(kg)	(sq.cm)	(mm)	(mm)	(%)	(%)	(\$)	(\$)	(\$)
BreedPlan	-3.4	-1.1	+16	+38	+34	+36	-5	+0.5	+34	+1.1	-0.9	-1.2	+0.9	+0.0	+\$21	+\$37	+\$39
EBV	60%	74%	72%	69%	69%	58%	39%	67%	56%	41%	52%	48%	41%	30%	10%	20%	
Acc	1%	10%	35%	10%	40%	40%			5%	25%			10%	35%	30%	10%	20%
Rank Top																	

* SPROFIT *	Birth Weight	Weaning Weight	Yearling Weight	Milk	Scrotal Cir	Mature Weight	Rib Eye Area	IMF	Carcass Weight	Back Fat	\$Profit
	(kg)	(kg)	(kg)	(kg)	(cm)	(kg)	(sq.cm)	(%)	(kg)	(mm)	(\$)
\$Profit ABE	+1.4	+42	+69	+20	+0.32	-1	+0.08	+0.26	830	-0.02	12,490
Rank Top	12.6%	25.2%	19.3%	37.1%	41.7%	25.8%		13.9%		12.6%	21.4%

Comments – A very solid bull throughout. He shows the pattern we’re looking for low birth weight, good early growth and then moderating. Our “N” bulls have performed well and show how durable the South Devon is! United cattle are just good honest cattle.



Fertility - Low Birth Weights – Good Growth – Excellent Carcass

www.davelle.com.au

Lot 3

Davelle United Titan N8

DVPN8
 DOB 25/3/2017
 Polled

BreedPlan – IMF Top 10%
BreedPlan – Fats Top 15%
\$Profit – IMF Top 24.7%
\$Profit – Back Fat Top 12.6%

“Outcross”

Sire: MJB Romeo 125R (B)(P)(USA)
 MJB United 333U (P)(USA)
 MJB Nikki 3691N (P)(USA)

Dam: Davelle Fearless 2nd (P)
 Davelle Fearless Talie K36 (P)
 Gadara Tallie (P)

SOUTH DEVON GROUP BREEDPLAN	Gest. Len.	Birth Wt.	200 Day Wt.	400 Day Wt.	600 Day Wt.	Mat. Cow Wt.	Milk (kg)	Scrotal Size (cm)	Carcass Wt. (kg)	Eye Muscle Area (sq.cm)	Rib Fat (mm)	Rump Fat (mm)	Retail Beef Yield (%)	IMF %	Vealer Index (\$)	Supermarket Index (\$)	Export Maternal Index (\$)
	(days)	(kg)	(kg)	(kg)	(kg)	(kg)	(kg)	(cm)	(kg)	(sq.cm)	(mm)	(mm)	(%)	(%)	(\$)	(\$)	(\$)
BreedPlan	-1.5	+0.2	+12	+20	+17	+19	-7	+0.3	+14	+0.3	+0.4	+0.6	-0.5	+0.5	+\$12	+\$21	+\$23
EBV	58%	73%	71%	68%	68%	57%	38%	66%	55%	39%	50%	50%	47%	39%			
Acc	20%	30%									15%	15%	10%		45%		
Rank Top																	

* SPROFIT *	Birth Weight	Weaning Weight	Yearling Weight	Milk	Scrotal Cir	Mature Weight	Rib Eye Area	IMF	Carcass Weight	Back Fat	\$Profit
	(kg)	(kg)	(kg)	(kg)	(cm)	(kg)	(sq.cm)	(%)	(kg)	(mm)	(\$)
\$Profit ABE	+3.1	+36	+57	+16	+0.31	+10	+0.01	+0.22	822	-0.02	7,996
Rank Top	39.5%	41%	38.1%		43%	40.9%		24.7%		12.6%	

Comments – The Talie line was brought in from Garth and Shirley Huppatz. A good solid line. An outcross bull going back to some old bloodlines. A sound safe bull in an attractive package.



Fertility - Low Birth Weights – Good Growth – Excellent Carcass
www.davelle.com.au

Lot 4

Davelle Black Nate N15

DVPN15
 DOB 31/3/2017
 Polled

BreedPlan – All Growth Top 15%
BreedPlan –IMF Top 5%
BreedPlan – Index all in Top 5%
\$Profit – \$Profit Index Top 3.8%
\$Profit – Rib Eye Top 8.9%

“Performance”

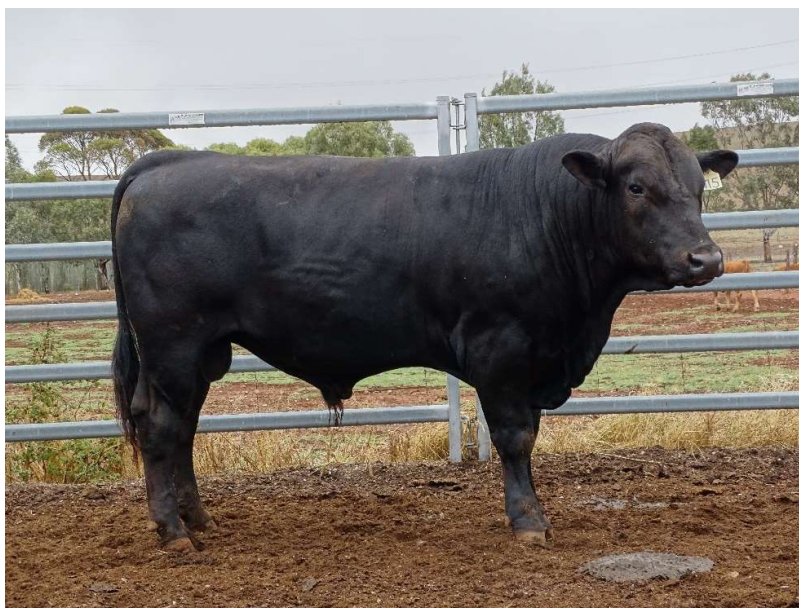
Sire: MJB Romeo 135R (P)(B) (USA)
 BC Progress 315U (P)(B)(USA)
 MJB Sassy 6714S (P)(USA)

Dam: Esk Hector (P)(NZ)
 Davelle Hector Noni F25 (P)
 Davelle Win Noni Z64 (P)

SOUTH DEVON GROUP BREEDPLAN	Gest. Len.	Birth Wt.	200 Day Wt.	400 Day Wt.	600 Day Wt.	Mat. Cow Wt.	Milk (kg)	Scrotal Size (cm)	Carcass Wt. (kg)	Eye Muscle Area (sq.cm)	Rib Fat (mm)	Rump Fat (mm)	Retail Beef Yield (%)	IMF (%)	Vealer Index (\$)	Supermarket Index (\$)	Export Maternal Index (\$)
	(days)	(kg)	(kg)	(kg)	(kg)	(kg)	(kg)	(cm)	(kg)	(sq.cm)	(mm)	(mm)	(%)	(%)	(\$)	(\$)	(\$)
BreedPlan EBV	-0.7	+0.3	+23	+35	+48	+60	-2	+1.5	+40	+1.9	+0.0	+0.0	+0.2	+1.4	+\$32	+\$46	+\$65
Acc	62%	74%	73%	70%	70%	62%	54%	69%	60%	46%	57%	57%	54%	47%	5%	5%	5%
Rank Top	50%	30%	15%	15%	15%	15%	15%	5%	5%	10%	35%	35%	5%	5%	5%	5%	5%

* SPROFIT *	Birth Weight	Weaning Weight	Yearling Weight	Milk	Scrotal Cir	Mature Weight	Rib Eye Area	IMF	Carcass Weight	Back Fat	\$Profit
	\$Profit ABE	+3.3	+42	+70	+23	+0.47	+19	+0.49	+0.39	831	-0.02
Rank Top	43.5%	25.2%	18%	19.5	23.7%		8.9%	0.9%		12.6%	3.8%

Comments – Maternal brother to retained sire Davelle Durango Nant M19. Impressive performance in both BreedPlan and \$Profit. Great option to add BC Progress into your herd to add that extra performance. Use over Angus cows to get hybrid vigour and maintaining British look.



Fertility - Low Birth Weights – Good Growth – Excellent Carcass

www.davelle.com.au

Lot 5

Davelle H26 Digger N26

DVPN26
 DOB 17/4/2017
 Polled

BreedPlan – Supermarket Index Top 35%
BreedPlan – Scrotal Top 1%
\$Profit – Mature Weight Top 16%
\$Profit – Back Fat Top 12.6%

“Safe Bull”

Sire: Paltarra Ubquiet (H)
 Davelle UB Righton H26 (P)
 Lincoln Rose 14 (P)

Dam: Dukes Flat Washington (P)
 Dukes Flat Chelsea (P)
 Lincoln Debra 43 (P)

SOUTH DEVON GROUP BREEDPLAN	Gest. Len.	Birth Wt.	200 Day Wt.	400 Day Wt.	600 Day Wt.	Mat. Cow Wt.	Milk (kg)	Scrotal Size (cm)	Carcass Wt. (kg)	Eye Muscle Area (sq.cm)	Rib Fat (mm)	Rump Fat (mm)	Retail Beef Yield (%)	IMF %	Vealer Index (\$)	Supermarket Index (\$)	Export Maternal Index (\$)
	(days)	(kg)	(kg)	(kg)	(kg)	(kg)	(kg)	(cm)	(kg)	(sq.cm)	(mm)	(mm)	(%)	(%)	(\$)	(\$)	(\$)
BreedPlan EBV	-0.2	+0.2	+8	+20	+29	+21	-2	+1.9	+19	+1.2	+0.2	+0.3	+0.3	-0.1	+\$15	+\$25	+\$37
Acc	48%	75%	69%	69%	70%	61%	51%	70%	59%	45%	55%	52%	45%	45%		35%	25%
Rank Top		30%			50%			1%	45%	25%	20%	25%					

* SPROFIT *	Birth Weight	Weaning Weight	Yearling Weight	Milk	Scrotal Cir	Mature Weight	Rib Eye Area	IMF	Carcass Weight	Back Fat	\$Profit
	(kg)	(kg)	(kg)	(kg)	(cm)	(kg)	(sq.cm)	(%)	(kg)	(mm)	(\$)
\$Profit ABE	+3.1	+15	+29	+12	+0.54	-10	+0.13	+0.07	808	-0.02	3,345
Rank Top	39.5%				17%	16%				12.6%	

Comments – N26 is an outcross bull for most. He is a solid well fleshed bull to produce excellent weaners. Calves will come easy and be soft looking ready for market. \$Profit is low due to limited linkage (Australian bloodlines).



Fertility - Low Birth Weights – Good Growth – Excellent Carcass
www.davelle.com.au

Lot 6

Davelle Titan Ralph N30

DVPN30
 DOB 30/5/2017
 Polled

BreedPlan – Fats Top 10 and 15%
BreedPlan – Milk Top 15%
\$Profit – Back Fat Top 12.6%
Strong Family

“Meat”

Sire: Lincoln Ramper 10E (P)
 Sulby Titan (P)
 Lincoln Falie 38 (P)

Dam: Davelle Reward Harrison (P)
 Davelle Rose F43 (P)
 Dukes Flat Yesterday (P)

SOUTH DEVON GROUP BREEDPLAN	Gest. Len.	Birth Wt.	200 Day Wt.	400 Day Wt.	600 Day Wt.	Mat. Cow Wt.	Milk (kg)	Scrotal Size (cm)	Carcass Wt. (kg)	Eye Muscle Area (sq.cm)	Rib Fat (mm)	Rump Fat (mm)	Retail Beef Yield (%)	IMF %	Vealer Index (\$)	Supermarket Index (\$)	Export Maternal Index (\$)
	(days)	(kg)	(kg)	(kg)	(kg)	(kg)	(kg)	(cm)	(kg)	(sq.cm)	(mm)	(mm)	(%)	(%)	(\$)	(\$)	(\$)
BreedPlan	+0.3	+1.6	+13	+15	+20	+6	+3	+0.6	+9	-0.2	+0.5	+0.7	-0.5	+0.2	+\$12	+\$13	+\$18
EBV	33%	50%	50%	48%	47%	44%	40%	31%	40%	28%	40%	40%	37%	34%			
Acc							15%	50%	5%		10%	15%	20%				
Rank Top																	

* SPROFIT *	Birth Weight	Weaning Weight	Yearling Weight	Milk	Scrotal Cir	Mature Weight	Rib Eye Area	IMF	Carcass Weight	Back Fat	\$Profit
	(kg)	(kg)	(kg)	(kg)	(cm)	(kg)	(sq.cm)	(%)	(kg)	(mm)	(\$)
\$Profit ABE	+6.1	+37	+51	+18	+0.57	+33	+0.1	+0.05	824	-0.02	4,733
Rank Top		38.3%	49.2%		14.6%					12.6%	

Comments – The only Sulby Titan son kept. He’s moderate and well fleshed. He’ll sire those punchy weaner calves. Will moderate larger cows. \$Profit is low due to limited linkage (Australian bloodlines).



Fertility - Low Birth Weights – Good Growth – Excellent Carcass

www.davelle.com.au

Lot 7

Davelle Black Rich N45

DVPN45
 DOB 29/7/2017
 Polled

BreedPlan – 200 Day Top 5%
BreedPlan – IMF Top 1%
BreedPlan – Index all in Top 5%
\$Profit - \$Profit Index Top 2.2%
\$Profit – Ranks well in most traits

“Performance and Style”

Sire: MJB Swagger 330Z (P)(B)USA)
 MJB Cool 548C (P)(B)(USA)
 MJB Nikki 8613U (P)(USA)

Dam: Davelle Black Rose G11 (P)(B)
 BC Progress 315U (P)(B)(USA)
 Davelle Awesome Rose D4 (P)

SOUTH DEVON GROUP BREEDPLAN	Gest. Len.	Birth Wt.	200 Day Wt.	400 Day Wt.	600 Day Wt.	Mat. Cow Wt.	Milk (kg)	Scrotal Size (cm)	Carcass Wt. (kg)	Eye Muscle Area (sq.cm)	Rib Fat (mm)	Rump Fat (mm)	Retail Beef Yield (%)	IMF (%)	Vealer Index (\$)	Supermarket Index (\$)	Export Maternal Index (\$)
	(days)	(kg)	(kg)	(kg)	(kg)	(kg)	(kg)	(cm)	(kg)	(sq.cm)	(mm)	(mm)	(%)	(%)	(\$)	(\$)	(\$)
BreedPlan EBV	-2.8	-0.6	+25	+31	+35	+18	-2	+0.5	+32	+1.5	+0.6	+0.8	-0.2	+1.2	+\$38	+\$48	+\$59
Acc	60%	73%	71%	67%	62%	48%	33%	66%	52%	39%	50%	50%	47%	39%			
Rank Top	5%	15%	5%	20%	35%	40%			10%	15%	10%	10%	1%	5%	5%	5%	5%

* SPROFIT *	Birth Weight	Weaning Weight	Yearling Weight	Milk	Scrotal Cir	Mature Weight	Rib Eye Area	IMF	Carcass Weight	Back Fat	\$Profit
\$Profit ABE	+2.6	+51	+80	+28	+0.05	+17	+0.42	+0.24	840	-0.03	17,320
Rank Top	30%	9.1%	8.3%	4%			19.9%	18.9%		31.7	2.2%

Comments – The first of the “Cool’s” bulls to be offered. Cool x Progress is leaving outstanding types and performance. He is a very consistent bull backed by the Rose family line. Stud prospects.



Fertility - Low Birth Weights – Good Growth – Excellent Carcass

www.davelle.com.au

Lot 8

Davelle Cool Prime N50

DVFN50
 DOB 31/7/2017
 Polled

BreedPlan – All indexes Top 5%
BreedPlan – IMF 1%
\$Profit - \$Profit Index Top 0.1
\$Profit – IMF Top 0.2%
\$Profit – Ranks well

“Just Awesome Performance”

Sire: MJB Swagger 330Z (P)(B)(USA)
 MJB Cool 548C (P)(B)(USA)
 MJB Nikki 8613U (P)(USA)

Davelle Rampage Regal H10 (P)
 Dam: Davelle H10 Penny K44 (P)
 Davelle D51 Penny H39 (P)

SOUTH DEVON GROUP BREEDPLAN	Gest. Len.	Birth Wt.	200 Day Wt.	400 Day Wt.	600 Day Wt.	Mat. Cow Wt.	Milk (kg)	Scrotal Size (cm)	Carcass Wt. (kg)	Eye Muscle Area (sq.cm)	Rib Fat (mm)	Rump Fat (mm)	Retail Beef Yield (%)	IMF %	Vealer Index (\$)	Supermarket Index (\$)	Export Maternal Index (\$)
	(days)	(kg)	(kg)	(kg)	(kg)	(kg)	(kg)	(cm)	(kg)	(sq.cm)	(mm)	(mm)	(%)	(%)	(\$)	(\$)	(\$)
BreedPlan EBV	-2.5	+0.0	+22	+34	+41	+36	+1	+0.6	+35	+1.9	+0.1	+0.1	+0.3	+1.0	+\$32	+\$44	+\$57
Acc	58%	72%	70%	65%	61%	47%	28%	66%	51%	39%	49%	49%	46%	38%			
Rank Top	5%	25%	15%	15%	25%	40%	40%	50%	5%	10%	25%	30%	1%	5%	5%	5%	5%

* SPROFIT *	Birth Weight	Weaning Weight	Yearling Weight	Milk	Scrotal Cir	Mature Weight	Rib Eye Area	IMF	Carcass Weight	Back Fat	\$Profit
	(kg)	(kg)	(kg)	(kg)	(cm)	(kg)	(sq.cm)	(%)	(kg)	(mm)	(\$)
\$Profit ABE	+2.4	+61	+93	+29	+0.01	+24	+0.38	+0.44	845	-0.02%	21,591
Rank Top	26.5%	1.9%	2.3%	2.7%	22%		28.8%	0.2%		12.6%	0.1%

Comments – Great package!! He is everything we breed for – low birthweight, good growth and excellent carcass. What impresses us is how his growth “curves” to leave moderate efficient females. Perfect bull that ranks well on BreedPlan and \$Profit – he looks good too!



Fertility - Low Birth Weights – Good Growth – Excellent Carcass

www.davelle.com.au

Lot 9

Davelle Cool Archer N52

DVFN52
 DOB 1/8/2017
 Polled

BreedPlan – All Indexes Top 5%
BreedPlan – IMF Top 5%
BreedPlan – 200 Day Top 5%
\$Profit - \$Profit Index Top 1.8%
\$Profit – High Weaning and Yearling

“All Rounder”

Sire: MJB Swagger 330Z (P)(B)(USA)
 MJB Cool 548C (P)(B)(USA)
 MJB Nikki 8613U (P)(USA)

Dam: Davelle D51 Reward G16 (P)
 Davelle Black Agnella J56 (P)(B)
 Davelle Black Agnella G34 (P)(B)

SOUTH DEVON GROUP BREEDPLAN	Gest. Len.	Birth Wt.	200 Day Wt.	400 Day Wt.	600 Day Wt.	Mat. Cow Wt.	Milk (kg)	Scrotal Size (cm)	Carcass Wt. (kg)	Eye Muscle Area (sq.cm)	Rib Fat (mm)	Rump Fat (mm)	Retail Beef Yield (%)	IMF (%)	Vealer Index (\$)	Supermarket Index (\$)	Export Maternal Index (\$)
	(days)	(kg)	(kg)	(kg)	(kg)	(kg)	(kg)	(cm)	(kg)	(sq.cm)	(mm)	(mm)	(%)	(%)	(\$)	(\$)	(\$)
BreedPlan EBV	-2.7	+0.5	+32	+37	+39	+20	+1	+1.4	+31	+0.1	+0.2	+0.3	-0.4	+0.9	+\$38	+\$43	+\$50
Acc	58%	73%	70%	66%	62%	47%	28%	65%	51%	38%	49%	49%	46%	38%	5%	5%	5%
Rank Top	5%	40%	5%	10%	25%	40%	40%	5%	10%	20%	25%	25%	5%	5%	5%	5%	5%

* SPROFIT *	Birth Weight	Weaning Weight	Yearling Weight	Milk	Scrotal Cir	Mature Weight	Rib Eye Area	IMF	Carcass Weight	Back Fat	\$Profit
	(kg)	(kg)	(kg)	(kg)	(cm)	(kg)	(sq.cm)	(%)	(kg)	(mm)	(\$)
\$Profit ABE	+2.6	+69	+101	+32	+1.12	+30	+0.07	+0.14	850	-0.02	17,685
Rank Top	30%	0.4%	0.9%	0.7%	0.2%					12.6%	1.8%

Comments – “Curve Bending” performance. Dam is a moderate BC Progress grand Daughter. He’s an ideal type to use in a cross breeding program to get calves to market quickly. Cool calves are very smooth.



Fertility - Low Birth Weights – Good Growth – Excellent Carcass

www.davelle.com.au

Lot 10

Davelle Cool Prime N56

DVPN56
 DOB 3/8/2016
 Polled

BreedPlan – Vealer Top 15%
BreedPlan – Sound all the way through
\$Profit – Top 2.8%
\$Profit – Top Weaning and Yearling Growth

“Balanced”

Sire: MJB Swagger 330Z (P)(B)(USA)
 MJB Cool 548C (P)(B)(USA)
 MJB Nikki 8613U (P)(USA)

Dam: Davelle Reward Penny D13 (P)
 Davelle Win Penny Z16 (P)

SOUTH DEVON GROUP BREEDPLAN	Gest. Len.	Birth Wt.	200 Day Wt.	400 Day Wt.	600 Day Wt.	Mat. Cow Wt.	Milk (kg)	Scrotal Size (cm)	Carcass Wt. (kg)	Eye Muscle Area (sq.cm)	Rib Fat (mm)	Rump Fat (mm)	Retail Beef Yield (%)	IMF (%)	Vealer Index (\$)	Supermarket Index (\$)	Export Maternal Index (\$)
	(days)	(kg)	(kg)	(kg)	(kg)	(kg)	(kg)	(cm)	(kg)	(sq.cm)	(mm)	(mm)	(%)	(%)	(\$)	(\$)	(\$)
BreedPlan EBV	-2.1	+0.3	+25	+35	+37	+41	+0	+1.0	+31	+0.5	-0.7	-0.9	+0.4	+0.4	+\$27	+\$32	+\$38
Acc	59%	73%	71%	66%	62%	49%	37%	65%	62%	39%	50%	50%	47%	39%			
Rank Top	10%	35%	10%	15%	30%	35%	50%	15%	10%				40%	10%	15%	20%	25%

* SPROFIT *	Birth Weight	Weaning Weight	Yearling Weight	Milk	Scrotal Cir	Mature Weight	Rib Eye Area	IMF	Carcass Weight	Back Fat	\$Profit
	(kg)	(kg)	(kg)	(kg)	(cm)	(kg)	(sq.cm)	(%)	(kg)	(mm)	(\$)
\$Profit ABE	+3.1	+66	+105	+24	+0.49	+38	+0.1	+0.19	855	-0.03	16,933
Rank Top	39.5%	0.7%	0.5%	15%	21.7%			35.1%		31.7%	2.8%

Comments – A solid bull throughout. Above average on most traits on BreedPlan and \$Profit. “Penny” family line are good, no fuss performers. Has a tank of a body to him.



Fertility - Low Birth Weights – Good Growth – Excellent Carcass

www.davelle.com.au

Lot 11

Davelle Cool Kobie N59

DVPN59
 DOB 4/8/2017
 Polled

BreedPlan – All Indexes in Top 10 and 15%
BreedPlan – Solid Throughout
\$Profit - \$Profit Index Top 0.5%
\$Profit – Solid Throughout

“I really like this fellow”

Sire: MJB Swagger 330Z (P)(B)(USA)
 MJB Cool 548C (P)(B)(USA)
 MJB Nikki 8613U (P)(USA)

Dam: Davelle Dazzler (P)
 Davelle Dazzle Krista H34 (P)
 Gadara Krista (P)

SOUTH DEVON GROUP BREEDPLAN	Gest. Len.	Birth Wt.	200 Day Wt.	400 Day Wt.	600 Day Wt.	Mat. Cow Wt.	Milk (kg)	Scrotal Size (cm)	Carcass Wt. (kg)	Eye Muscle Area (sq.cm)	Rib Fat (mm)	Rump Fat (mm)	Retail Beef Yield (%)	IMF (%)	Vealer Index (\$)	Supermarket Index (\$)	Export Maternal Index (\$)
	(days)	(kg)	(kg)	(kg)	(kg)	(kg)	(kg)	(cm)	(kg)	(sq.cm)	(mm)	(mm)	(%)	(%)	(\$)	(\$)	(\$)
BreedPlan EBV	-0.7	+0.8	+21	+24	+29	+15	+0	+1.4	+25	+2.0	+0.5	+0.7	+0.5	+0.5	+\$29	+\$33	+\$42
Acc	58%	73%	70%	66%	61%	47%	29%	65%	50%	36%	47%	47%	44%	35%			
Rank Top	50%	45%	15%	40%	50%	25%	50%	5%	20%	10%	10%	15%	30%	10%	10%	15%	15%

* SPROFIT *	Birth Weight	Weaning Weight	Yearling Weight	Milk	Scrotal Cir	Mature Weight	Rib Eye Area	IMF	Carcass Weight	Back Fat	\$Profit
\$Profit ABE	+3.0	+59	+97	+31	+0.9	+35	+0.43	+0.21	847	-0.02	19,711
Rank Top	37.5%	2.7%	1.4%	1.1%	1.5%		17.9%	28%		12.6%	0.5%

Comments – It’s not very often you get a bull that ranks average or above average on every trait on BreedPlan and all bar one trait on \$Profit. Stud prospects. He is a cracker!



Fertility - Low Birth Weights – Good Growth – Excellent Carcass

www.davelle.com.au

Sale Females

Our females have to pass many tests to be in our herd – weights, scans, visual appraisal and performance. We pride ourselves on very sound females. They have worked hard this year.

Reference Sire

Davelle Durango Nant M19 DVPM19 DOB 8/4/2016 Polled Red

Sire: DLCC Shur Loc 99W (P)(B)(USA) ESK Hector (NZ)
 DLCC Durango 26Z (P)(B)(USA) Dam: Davelle Hector Noni F25 (P)
 DLCC Mandi 55U (P)(USA) Davelle Win Noni (P)

SOUTH DEVON GROUP BREEDPLAN	Gest. Len.	Birth Wt.	200 Day Wt.	400 Day Wt.	600 Day Wt.	Mat. Cow Wt.	Milk (kg)	Scrotal Size (cm)	Carcass Wt. (kg)	Eye Muscle Area (sq.cm)	Rib Fat (mm)	Rump Fat (mm)	Retail Beef Yield (%)	IMF %	Vealer Index (\$)	Supermarket Index (\$)	Export Maternal Index (\$)
	BreedPlan																
EBV	+0.2	+1.6	+23	+34	+44	+64	-3	+0.6	+36	+1.8	-0.1	-0.1	+0.2	+1.2	+\$23	+\$33	+\$47
Acc	62%	77%	73%	68%	69%	57%	38%	66%	55%	39%	50%	50%	47%	39%			
Rank Top			15%	15%	20%	10%		50%	5%	10%	40%	40%	1%	30%	15%		10%

* PROFIT *	Birth Weight	Weaning Weight	Yearling Weight	Milk	Scrotal Cir	Mature Weight	Rib Eye Area	IMF	Carcass Weight	Back Fat	\$Profit
	\$Profit ABE	+3.2	+54	+89	+15	+0.37	+29	+0.63	+0.28	831	0.0
Rank Top	41.5%	6%	3.5%		35.3%		0.9%	10%		0.7%	2.5%

Comments – We kept M19 as an out cross option for our herd. He is very sound in every aspect and in a moderate frame. Has 12 calves on record. All bar one cow carries his service.



Fertility - Low Birth Weights – Good Growth – Excellent Carcass

www.davelle.com.au

Autumn Calving Females – Listed in Date of Birth order

Lot 12 Davelle D8 Lucia G26 DVPG26 DOB 9/4/2011 Polled

Sire: Davelle Awesome (P) Davelle Win Austin (P)
 Paltarra Awesome (P) Davelle Z26 Lucia (P)
 Dukes Flat Yesterday (P) Davelle X11 (P)

Gest. Len. (days)	Birth Wt. (kg)	200 Day Wt. (kg)	400 Day Wt. (kg)	600 Day Wt. (kg)	Mat. Cow Wt. (kg)	Milk (kg)	Scrotal Size (cm)	Carcase Wt. (kg)	Eye Muscle Area (sq.cm)	Rib Fat (mm)	Rump Fat (mm)	Retail Beef Yield (%)	IMF %	Vealer Index (\$)	Supermarket Index (\$)	Export Maternal Index (\$)
+0.1	-0.6	+4	+8	+14	+36	-9	+0.1	+9	-0.7	+2.3	+34.1	-2.3	+1.2	+\$16	+\$29	+\$41
60%	80%	78%	76%	77%	76%	72%	55%	67%	49%	67%	67%	63%	59%			

Comments – A very sound cow for her age. Moderate, but has weight to her. 6 calves (MMFMMF). Consistent performer. \$Profit 4,555

Joined to Davelle Durango Nant M19 (date in 10/6/2018 date out 5/8/2018). PTIC

Lot 13 Davelle Ace Rose K29 DVPK29 DOB 21/4/2014 Polled

Sire: Ace F11 Davelle Reward Harrison
 Merilba W042 Davelle D23 Rose F43
 Ace Z14 Dukes Flat Yesterday

Gest. Len. (days)	Birth Wt. (kg)	200 Day Wt. (kg)	400 Day Wt. (kg)	600 Day Wt. (kg)	Mat. Cow Wt. (kg)	Milk (kg)	Scrotal Size (cm)	Carcase Wt. (kg)	Eye Muscle Area (sq.cm)	Rib Fat (mm)	Rump Fat (mm)	Retail Beef Yield (%)	IMF %	Vealer Index (\$)	Supermarket Index (\$)	Export Maternal Index (\$)
-1.5	+0.1	+15	+20	+26	+7	+7	+0.3	+23	+2.5	+0.2	+0.3	+1.3	-0.3	+\$29	+\$30	+\$38
57%	77%	75%	73%	75%	74%	63%	47%	63%	46%	66%	65%	61%	56%			

Comments – Has been a very honest cow producing a good line of females all retained. 3 calves (FFF). The “Rose” family are honest performers. \$Profit 8,439

Joined to Davelle Durango Nant M19 (date in 10/6/2018 date out 5/8/2018). PTIC



DVPG26



DVPK29



Fertility - Low Birth Weights – Good Growth – Excellent Carcass

www.davelle.com.au

Lot 14 Davelle Fearless Talie K36 DVP336 DOB 11/5/2014 Polled

Sire: Kildare Cadman
Kildare Fearless 2nd
Kildare Hannah 5

Dam: Tesbury Quadrant
Gadara Tallie
Gadara Tatts 2

Gest. Len. (days)	Birth Wt. (kg)	200 Day Wt. (kg)	400 Day Wt. (kg)	600 Day Wt. (kg)	Mat. Cow Wt. (kg)	Milk (kg)	Scrotal Size (cm)	Carcase Wt. (kg)	Eye Muscle Area (sq.cm)	Rib Fat (mm)	Rump Fat (mm)	Retail Beef Yield (%)	IMF %	Vealer Index (\$)	Supermarket Index (\$)	Export Maternal Index (\$)
+0.2	+0.3	+3	+4	+9	+21	-11	-0.2	+5	+0.2	+0.3	+0.4	-0.4	+0.4	-\$1	+\$3	+\$10
52%	76%	74%	72%	73%	71%	61%	47%	61%	40%	60%	60%	55%	49%			

Comments – A sound attractive cow. 3 calves (MMF). Dam brought in from Garth and Shirley Huppatz. \$Profit 549 (very low linkage)

Joined to Davelle Durango Nant M19 (date in 10/6/2018 date out 5/8/2018). PTIC

Lot 15 Davelle Z26 Debra L4 DVPL4 DOB 12/3/2015 Polled

Sire: Paltarra Winner
Davelle Win Austin Z26
Davelle V04

Dam: Glenstrae Macalister X6
Davelle Mac Debra J06
Davelle Hector Debra

Gest. Len. (days)	Birth Wt. (kg)	200 Day Wt. (kg)	400 Day Wt. (kg)	600 Day Wt. (kg)	Mat. Cow Wt. (kg)	Milk (kg)	Scrotal Size (cm)	Carcase Wt. (kg)	Eye Muscle Area (sq.cm)	Rib Fat (mm)	Rump Fat (mm)	Retail Beef Yield (%)	IMF %	Vealer Index (\$)	Supermarket Index (\$)	Export Maternal Index (\$)
-1.0	-0.7	+11	+18	+24	+39	-12	+0.0	+22	+0.6	-0.2	-0.4	+0.3	+0.3	+\$17	+\$22	+\$31
59%	74%	73%	70%	71%	71%	58%	35%	59%	40%	61%	61%	56%	1%			

Comments – Well put together balanced young cow. 2 calves (FF). \$Profit 7,170.

Joined to Davelle Durango Nant M19 (date in 10/6/2018 date out 5/8/2018). PTIC



DVPK36



DVPL4



Fertility - Low Birth Weights – Good Growth – Excellent Carcass
www.davelle.com.au

Lot 16 Davelle Toryson Rose L13 DVPL13 DOB 2/4/2015 Polled

Sire: Lincoln Victory 14Y
Lincoln Toryson 39A
Lincoln Petellia 17

Dam: Davelle Ramage Rose H07
Lincoln Ramage 16T
Lincoln Rose 14

Gest. Len. (days)	Birth Wt. (kg)	200 Day Wt. (kg)	400 Day Wt. (kg)	600 Day Wt. (kg)	Mat. Cow Wt. (kg)	Milk (kg)	Scrotal Size (cm)	Carcase Wt. (kg)	Eye Muscle Area (sq.cm)	Rib Fat (mm)	Rump Fat (mm)	Retail Beef Yield (%)	IMF %	Vealer Index (\$)	Supermarket Index (\$)	Export Maternal Index (\$)
-1.2	+1.3	+18	+22	+42	+54	+8	+1.2	+23	+1.5	+0.2	+0.3	+0.5	-0.1	+\$27	+\$26	+\$45
52%	76%	73%	70%	72%	70%	56%	42%	59%	42%	60%	60%	56%	51%			

Comments – A sound young cow with a little more frame. Full Lincoln bloodlines. 2 calves (MM). \$Profit 7,469

Joined to Davelle Durango Nant M19 (date in 10/6/2018 date out 5/8/2018). PTIC

Lot 17 Davelle Joyride Annie M30 DVPM30 DOB 28/4/2015 Polled

Sire: The Bend Easy Rider
The Bend Joyride
The Bend Sapphire

Dam: Davelle D8 Annie K14
Davelle Awesome Reg D8
Davelle Alpha Annie E07

Gest. Len. (days)	Birth Wt. (kg)	200 Day Wt. (kg)	400 Day Wt. (kg)	600 Day Wt. (kg)	Mat. Cow Wt. (kg)	Milk (kg)	Scrotal Size (cm)	Carcase Wt. (kg)	Eye Muscle Area (sq.cm)	Rib Fat (mm)	Rump Fat (mm)	Retail Beef Yield (%)	IMF %	Vealer Index (\$)	Supermarket Index (\$)	Export Maternal Index (\$)
+1.3	+3.1	+17	+26	+36	+39	-1	+0.7	+21	+0.9	+0.1	+0.2	+0.2	+0.2	+\$9	+\$13	+\$23
45%	73%	68%	66%	67%	55%	44%	31%	53%	36%	57%	57%	52%	47%			

Comments – A sound moderate young cow from our high performing “A” family line. 1 calf (F). \$Profit 7,013

Joined to Davelle Durango Nant M19 (date in 10/6/2018 date out 5/8/2018). PTIC



DVPL13



DVPM30



Fertility - Low Birth Weights – Good Growth – Excellent Carcass
www.davelle.com.au

Spring Calving Females – Listed in Date of Birth order

To be pregnancy tested prior to the sale. A Supplementary Sheet will be available on our website and on AuctionsPlus. Calves to be weaned off them prior to the sale. They have been working hard in unfavourable conditions.

Lot 18 Davelle Rampage Rose H14 DVPH14 DOB 17/3/2012 Polled

Sire: Lincoln Poll Rampage 16T
 Lincoln Agnella 10

Dam: Lincoln Rose 14
 Lincoln Rose 8

Gest. Len. (days)	Birth Wt. (kg)	200 Day Wt. (kg)	400 Day Wt. (kg)	600 Day Wt. (kg)	Mat. Cow Wt. (kg)	Milk (kg)	Scrotal Size (cm)	Carcase Wt. (kg)	Eye Muscle Area (sq.cm)	Rib Fat (mm)	Rump Fat (mm)	Retail Beef Yield (%)	IMF %	Vealer Index (\$)	Supermarket Index (\$)	Export Maternal Index (\$)
-2.4	-0.6	+5	+9	+14	+14	-2	+1.2	+9	+1.5	+2.1	+2.9	+0.7	+0.1	+\$24	+\$32	+\$42
66%	82%	79%	78%	79%	78%	73%	66%	70%	55%	70%	70%	66%	63%			

Comments – Daughter from Lincoln Rose 24. Has 3 great females have been retained. 5 calves (FMMFF). Great prospect to get into the “Rose” family line. \$Profit 4,685

Joined to Davelle Durango Nant M19 (date in 13/10/2018 date out 9/12/2018). To be Preg Tested.



Fertility - Low Birth Weights – Good Growth – Excellent Carcass
www.davelle.com.au

Lot 19 Davelle H10 Penny K44

DVPK44

DOB 23/7/2014

Polled

Lincoln Poll Rampage 16T
 Sire: Davelle Rampage Regal H10
 Lincoln Rose 14

Davelle A54 Dylan D51
 Dam: Davelle D51 Penny H39
 Davelle Alpha Polly F18

Gest. Len. (days)	Birth Wt. (kg)	200 Day Wt. (kg)	400 Day Wt. (kg)	600 Day Wt. (kg)	Mat. Cow Wt. (kg)	Milk (kg)	Scrotal Size (cm)	Carcase Wt. (kg)	Eye Muscle Area (sq.cm)	Rib Fat (mm)	Rump Fat (mm)	Retail Beef Yield (%)	IMF %	Vealer Index (\$)	Supermarket Index (\$)	Export Maternal Index (\$)
-1.3	+1.3	+17	+33	+47	+49	+5	+0.8	+33	+2.2	-0.2	-0.3	+1.0	+0.3	+\$23	+\$34	+\$50
55%	75%	73%	72%	73%	72%	57%	59%	62%	48%	64%	64%	60%	54%			

Comments – A larger frame cow that performs well to have high weaning calves. Son Lot 8. 3 calves (MMM). Long and smooth bodied cow. \$Profit 9,418

Joined to Davelle Durango Nant M19 (date in 13/10/2018 date out 9/12/2018). To be Preg Tested.

Lot 20 Davelle Ace Krista K64

DVPK64

DOB 10/8/2014

Polled

Merilba A300
 Sire: Ace F11
 Ace Z14

Dungrove Poll Tassie Wonder
 Dam: Gadara Kirsta
 Gadara Kirsty

Gest. Len. (days)	Birth Wt. (kg)	200 Day Wt. (kg)	400 Day Wt. (kg)	600 Day Wt. (kg)	Mat. Cow Wt. (kg)	Milk (kg)	Scrotal Size (cm)	Carcase Wt. (kg)	Eye Muscle Area (sq.cm)	Rib Fat (mm)	Rump Fat (mm)	Retail Beef Yield (%)	IMF %	Vealer Index (\$)	Supermarket Index (\$)	Export Maternal Index (\$)
-0.7	+1.8	+20	+17	+24	-1	+7	+0.0	+16	+1.8	+0.6	+0.9	+0.7	-0.1	+\$26	+\$20	+\$28
50%	77%	73%	71%	73%	72%	56%	40%	60%	42%	62%	61%	57%	52%			

Comments – A good young cow that's produced nice calves. 3 calves (FMF). A sound breeder with sound performance. Gadara blood lines on the female side. We've kept 2 excellent heifers. \$Profit 9,148

Joined to Davelle Durango Nant M19 (date in 13/10/2018 date out 9/12/2018). To be Preg Tested.



DVPK44



DVPK64



Fertility - Low Birth Weights – Good Growth – Excellent Carcass

www.davelle.com.au

Lot 21 Davelle H26 Yasmin K79 DVPK79 DOB 2/9/2014 Polled

Sire: Davelle Ubquiet
 Paltarra Ubquiet
 Lincoln Rose 14

Dam: Dukes Flat C016
 Dukes Flat Acceleration
 Dukes Flat Yasmin

Gest. Len. (days)	Birth Wt. (kg)	200 Day Wt. (kg)	400 Day Wt. (kg)	600 Day Wt. (kg)	Mat. Cow Wt. (kg)	Milk (kg)	Scrotal Size (cm)	Carcass Wt. (kg)	Eye Muscle Area (sq.cm)	Rib Fat (mm)	Rump Fat (mm)	Retail Beef Yield (%)	IMF %	Vealer Index (\$)	Supermarket Index (\$)	Export Maternal Index (\$)
-1.0	-1.0	+8	+14	+14	-28	+0	+1.0	+16	+1.3	+0.2	+0.3	+0.9	-0.4	+\$19	+\$26	+\$29
52%	76%	73%	72%	74%	73%	60%	49%	62%	43%	62%	62%	57%	52%			

Comments – A good young cow that produces nice sappy calves. 3 calves (MMF). Moderate with sound performance. \$Profit 3,995.

Joined to Davelle Durango Nant M19 (date in 13/10/2018 date out 9/12/2018). To be Preg Tested.

Lot 22 Davelle H26 Noni L9 DVPL9 DOB 24/3/2015 Polled

Sire: Davelle Ubquiet
 Paltarra Ubquiet
 Lincoln Rose 14

Dam: Davelle Hector Noni F25
 Esk Hector (NZ)
 Davelle Win Noni Z64

Gest. Len. (days)	Birth Wt. (kg)	200 Day Wt. (kg)	400 Day Wt. (kg)	600 Day Wt. (kg)	Mat. Cow Wt. (kg)	Milk (kg)	Scrotal Size (cm)	Carcass Wt. (kg)	Eye Muscle Area (sq.cm)	Rib Fat (mm)	Rump Fat (mm)	Retail Beef Yield (%)	IMF %	Vealer Index (\$)	Supermarket Index (\$)	Export Maternal Index (\$)
-0.6	+1.3	+22	+32	+46	+66	-5	+1.2	+31	+0.6	-0.1	-0.1	-0.1	+0.6	+\$22	+\$29	+\$46
52%	75%	72%	71%	73%	72%	56%	52%	62%	46%	65%	64%	60%	55%			

Comments – A well balanced sound cow that does a great job on her calves. 2 calves (FF). \$Profit 5,739

Joined to Davelle J46 Regal M71 (Lot 1) (date in 13/10/2018 date out 9/12/2018). To be Preg Tested.



DVPK79



DVPL9



Fertility - Low Birth Weights – Good Growth – Excellent Carcass
www.davelle.com.au

Lot 23 Davelle Ace Iris L48

DVPL48

DOB 8/8/2015

Polled

Merilba A300

DLCC Rerward 6A

Sire: Ace F11

Dam: Davelle Reward Iris

Ace Z14

Davelle T21 Iris

Gest. Len. (days)	Birth Wt. (kg)	200 Day Wt. (kg)	400 Day Wt. (kg)	600 Day Wt. (kg)	Mat. Cow Wt. (kg)	Milk (kg)	Scrotal Size (cm)	Carcase Wt. (kg)	Eye Muscle Area (sq.cm)	Rib Fat (mm)	Rump Fat (mm)	Retail Beef Yield (%)	IMF %	Vealer Index (\$)	Supermarket Index (\$)	Export Maternal Index (\$)
-1.9	+0.7	+18	+22	+29	+11	+7	+0.4	+28	+3.8	-0.8	-1.1	+2.8	-0.8	+\$27	+\$23	+\$30
51%	76%	72%	70%	72%	69%	53%	45%	60%	44%	63%	63%	58%	54%			

Comments – Good sound cow. 2 calves (MM). Big EMA. Pity she hasn't given us a female, we can't keep everything. \$Profit 6,190.

Joined to Davelle Durango Nant M19 (date in 13/10/2018 date out 9/12/2018). To be Preg Tested.

Lot 24 Davelle Ace Rose L74

DVPL74

DOB 5/9/2015

Polled

Merilba A300

Lincoln Poll Debrutus 28W

Sire: Ace F11

Dam: Dukes Flat Yesterday

Ace Z14

Lincoln Rose 14

Gest. Len. (days)	Birth Wt. (kg)	200 Day Wt. (kg)	400 Day Wt. (kg)	600 Day Wt. (kg)	Mat. Cow Wt. (kg)	Milk (kg)	Scrotal Size (cm)	Carcase Wt. (kg)	Eye Muscle Area (sq.cm)	Rib Fat (mm)	Rump Fat (mm)	Retail Beef Yield (%)	IMF %	Vealer Index (\$)	Supermarket Index (\$)	Export Maternal Index (\$)
-1.2	-0.4	+10	+12	+17	+7	+5	+0.2	+12	+0.6	+0.9	+1.3	-0.3	+0.0	+\$23	+\$26	+\$33
53%	78%	74%	72%	72%	64%	60%	52%	62%	47%	63%	63%	59%	55%			

Comments – A nice young cow. 2 calves (FF). From the Rose family. \$Profit 5,591

Joined to Davelle Durango Nant M19 (date in 13/10/2018 date out 9/12/2018). To be Preg Tested.



DVPL48



DVPL74



Fertility - Low Birth Weights – Good Growth – Excellent Carcass

www.davelle.com.au

Yearling Heifers – Listed in Date of Birth order

The first time we offer yearling heifers. Grow them out and mate them to the bull of your choice.

Lot 25 Davelle Clifford Jodie P1 DVPP1 DOB 8/3/2018 Polled

Glenstrae Erskine
Sire: Lilyville Clifford B7
Glenstrae Krystal 10

Kirndeem Gareth
Dam: Davelle Gareth Jodie M5
Davelle D8 Jodie K4

Gest. Len. (days)	Birth Wt. (kg)	200 Day Wt. (kg)	400 Day Wt. (kg)	600 Day Wt. (kg)	Mat. Cow Wt. (kg)	Milk (kg)	Scrotal Size (cm)	Carcase Wt. (kg)	Eye Muscle Area (sq.cm)	Rib Fat (mm)	Rump Fat (mm)	Retail Beef Yield (%)	IMF %	Vealer Index (\$)	Supermarket Index (\$)	Export Maternal Index (\$)
-2.8	-2.3	+2	+14	+14	+10	+1	+0.0	+19	+2.4	+0.8	+1.1	+0.4	+0.3	+\$22	+\$37	+\$42
58%	72%	69%	61%	61%	53%	41%	26%	48%	29%	41%	41%	38%	34%			

Comments – Very sound heifer. \$Profit 10,367



DVPP1



DVPP2

Lot 26 Davelle Clifford Rose P2 DVPP2 DOB 12/3/2018 Polled

Glenstrae Erskine
Sire: Lilyville Clifford B7
Glenstrae Krystal 10

Davelle Win Austin
Dam: Davelle Z26 Rose M14
Davelle Ace Rose K29

Gest. Len. (days)	Birth Wt. (kg)	200 Day Wt. (kg)	400 Day Wt. (kg)	600 Day Wt. (kg)	Mat. Cow Wt. (kg)	Milk (kg)	Scrotal Size (cm)	Carcase Wt. (kg)	Eye Muscle Area (sq.cm)	Rib Fat (mm)	Rump Fat (mm)	Retail Beef Yield (%)	IMF %	Vealer Index (\$)	Supermarket Index (\$)	Export Maternal Index (\$)
-0.6	+1.8	+21	+31	+47	+48	+6	+0.7	+33	+2.4	-0.6	-0.8	+1.8	-0.5	+\$24	+\$25	+\$41
48%	75%	71%	70%	71%	62%	50%	46%	60%	45%	63%	62%	58%	54%			

Comments – Granddaughter of Lot 13. Great performing line. Nice heifer. \$Profit 11,760



Fertility - Low Birth Weights – Good Growth – Excellent Carcass

www.davelle.com.au

Lot 27 Davelle Clifford Rose P8 DVPP8 DOB 14/3/2018 Polled

Glenstrae Erskine
Sire: Lilyville Clifford B7
Glenstrae Krystal 10

Davelle Win Austin
Dam: Davelle Z26 Rose M13
Davelle Ace Rose K28

Gest. Len. (days)	Birth Wt. (kg)	200 Day Wt. (kg)	400 Day Wt. (kg)	600 Day Wt. (kg)	Mat. Cow Wt. (kg)	Milk (kg)	Scrotal Size (cm)	Carcase Wt. (kg)	Eye Muscle Area (sq.cm)	Rib Fat (mm)	Rump Fat (mm)	Retail Beef Yield (%)	IMF %	Vealer Index (\$)	Supermarket Index (\$)	Export Maternal Index (\$)
-1.3	-0.6	+7	+17	+21	+25	+3	-0.1	+19	+1.6	+1.0	+1.3	-0.2	+0.6	+\$22	+\$33	+\$41
59%	72%	70%	61%	61%	53%	43%	26%	49%	30%	42%	42%	39%	35%			

Comments – 6 generation on from the great Lincoln Rose 24. \$Profit 9,520



DVPP8



DVPP10

Lot 28 Davelle Clifford Polly P10 DVPP10 DOB 15/3/2018 Polled

Glenstrae Erskine
Sire: Lilyville Clifford B7
Glenstrae Krystal 10

Davelle UB Righton H26
Dam: Davelle H26 Polly M28
Davelle Black Polly G5

Gest. Len. (days)	Birth Wt. (kg)	200 Day Wt. (kg)	400 Day Wt. (kg)	600 Day Wt. (kg)	Mat. Cow Wt. (kg)	Milk (kg)	Scrotal Size (cm)	Carcase Wt. (kg)	Eye Muscle Area (sq.cm)	Rib Fat (mm)	Rump Fat (mm)	Retail Beef Yield (%)	IMF %	Vealer Index (\$)	Supermarket Index (\$)	Export Maternal Index (\$)
-0.8	+0.5	+12	+23	+30	+25	+0	+0.4	+23	+1.9	+0.7	+1.1	+0.2	+0.3	+\$22	+\$32	+\$43
54%	72%	69%	61%	61%	50%	43%	32%	49%	31%	42%	42%	39%	54%			

Comments – Sound heifer with BC Progress 315U sitting 3 generations back. \$Profit 8,147



Fertility - Low Birth Weights – Good Growth – Excellent Carcass
www.davelle.com.au



Introducing Davelle Droughtmasters

DVL

From David's trip to Beef 2015 he found Droughtmasters and could see how we could use them and develop a market.

We have brought into some very good females from prominent studs. We're using AI and natural sires to breed cattle to suit our environment, into the north and pastoral areas.

Our "Objectives" with our Droughtmasters will be closely aligned to the way we breed our South Devons – to breed cattle that the beef industry demand high fertility as the start then low birth weight, good growth and excellent carcass.

We will enthusiastically performance record and utilise BreedPlan to find the cattle the beef industry demands.

The big question – Why Droughtmaster?

The pioneer cattlemen who developed the Droughtmaster retained the most desirable performance traits from both Bos Indicus and Bos Taurus genetics.

They developed a breed which could perform by consistently producing and reproducing despite parasites and adverse environments, while economically producing high yielding carcasses of quality beef.

Performing well in harsh conditions is important, but performance in all links of the beef production chain is more important.

The Droughtmaster is renowned for its performance in:

Reproduction - Calving ease, high libido, fertility and adaptability all combine to give the Droughtmaster an outstanding reproductive performance.

Growth - Excellent milking ability, digestive efficiency, low nutritional requirements, feed conversion efficiency, walking ability and foraging ability combine to make the Droughtmaster an outstanding performer.



Fertility - Low Birth Weights – Good Growth – Excellent Carcass

www.davelle.com.au

Consistently outgrowing most other breeds when nutrition is restricted, they perform as well as most breeds in feedlots or on high quality pasture.

Feed Efficiency - A low maintenance digestive system, unique to Bos Indicus derived breeds, contributes to the Droughtmaster's reputation for highly efficient feed conversion, which provides a large economic advantage.

Pasture - Optimum growth under a range of variable conditions is major benefit offered by the Droughtmaster. From prime improved pasture in temperate regions, light native pasture in tropical right through to drought conditions which invariably plague many areas of Australia, the Droughtmaster is recognised as one of the leading performers.

Carcase - Well muscled carcasses with optimum fat cover, give Droughtmasters excellent dressing percentages and high saleable meat yields.

- Recent trial results produced dressing percentages of 58% and saleable meat yields of 76%
- Being a "middle of the road breed", fat cover is at optimum levels
- With Shorthorn in its background, marbling performance is among the highest of the Bos indicus derived breeds
- Their outstanding docility keeps meat colour and pH at acceptable levels
- By achieving suitability for a range of market specifications, at a reasonably young age, Droughtmasters produce high quality, tender beef
- Under the current MSA Cuts Based Grading System, Droughtmaster carcasses can grade EQS 3 and 4 star under a standard production system. High growth performance and extended ageing of cuts, can produce EQS 5 star grading
- Numerous wins in carcass competitions across Australia confirm this performance

Cross Breeding

In the temperate regions of Australia, traditionally the home of the British breeds, the low maintenance Droughtmaster breed is being used increasingly in crossbreeding programs to produce easy care productive cattle.

They are also used in tropical areas to improve carcass qualities and performance.

The progeny resulting from this crossbreeding, have a significant economic advantage through their inheritance of Droughtmaster traits (in addition to the expected heterosis) :

- Calving Ease
- Adaptation
- Longevity
- Reduced Eye Problems
- Bloat Resistance
- Mothering Ability
- Milking Ability



Fertility - Low Birth Weights – Good Growth – Excellent Carcass

www.davelle.com.au

High growth sires can be used successfully over Droughtmaster females, due to generations of Droughtmaster breeders constantly selecting for:

- Low Birth Weight
- Calf Shape
- Pelvic Structure

The Droughtmaster bull passes on these dominant traits to his progeny in a crossbreeding program. Consequently, the F1 Droughtmaster female is renowned as a very efficient dam, and most effective when used with high growth sires. This combination fits the axiom 'cows for your country - bulls for your market'.

With equal parts of Bos Taurus and Bos Indicus blood, the Droughtmaster provides the opportunity to crossbreed without causing a dramatic change to either the visual appearance (phenotype) or to the genotype of the progeny.



Glenlands D Utterly (RSD153644M) 4 year old

Current herd sire brought from Bos Park QLD. Utterly contains – Glenlands O'Shea, Glenlands Instinctive, Swan Horsham, Cungelella Farmhand, Glenlands D Mandella, Clonlara 06231 all prominent Droughtmaster bulls. At 21mth weighed 782kg EMA 132cm² Fats 12/8 IMF 5.1. Calves due from mid March 2019.



Fertility - Low Birth Weights – Good Growth – Excellent Carcass

www.davelle.com.au

Lot 29 Davelle Eden D5

DVL16004M

DOB 22/10/2016

Polled

Lamont Inmate (P) D5


Minlacowie Paddy Boy (S) D5

Sire: Oasis Zazu (S) D5

Dam: Wingfield Pamela 2809 (P) D5

Oasis Courtney (P) D5

Wingfield Pamela 2323 (P) D5

	Birth Wt. (kg)	200 Day Wt. (kg)	400 Day Wt. (kg)	600 Day Wt. (kg)	Mat. Cow Wt. (kg)	Milk (kg)	Scrotal Size (cm)	Carcase Wt. (kg)	Eye Muscle Area (sq.cm)	Rib Fat (mm)	Rump Fat (mm)	Retail Beef Yield (%)	IMF %
BreedPlan EBV	+0.6	+14	+22	+30	+30	--	--	+17	+1.3	-1.4	-1.9	--	--
Accuracy	30%	42%	44%	47%	40%	%	%	37%	27%	32%	32%	%	
Rank Top	25%	50%	20%	20%	15%		%	20%	15%	5%	5%	%	

Weights - BW 26kg 200d 267kg 400d 401kg 600d 660kg Scrotal 40cm

Scans - EMA 90cm² Rib 3mm Rump 4mm IMF 1.5%

Comments – Resultant calf from the purchase of dam from Wingfield/Minlacowie stud QLD. Sire has the renown Lamont Inmate in bloodline. Well put together bull. Length. Full of muscle and flesh. Free moving. Our Droughtmasters are paddock reared and no lead feeding. Easy doing, profitable cattle. Recently South Devon x Droughtmaster steers averaged \$1,537.38 at market. EBV's are relatively new, figures and accuracy will improve over time.



Fertility - Low Birth Weights – Good Growth – Excellent Carcass

www.davelle.com.au

Lot 30 Davelle Vale D5


DVL16005M

DOB 3/11/2016

Polled

Lamont Inmate (P) D5
Sire: Oasis Zazu (S) D5
Oasis Courtney (P) D5

Billabong Richmond (P) D5
Dam: Wingfield Jalana 2813 (P) D5
Wingfield Jacana 2514 (P) D5

	Birth Wt. (kg)	200 Day Wt. (kg)	400 Day Wt. (kg)	600 Day Wt. (kg)	Mat. Cow Wt. (kg)	Milk (kg)	Scrotal Size (cm)	Carcase Wt. (kg)	Eye Muscle Area (sq.cm)	Rib Fat (mm)	Rump Fat (mm)	Retail Beef Yield (%)	IMF %
BreedPlan EBV	+0.6	+10	+13	+16	+13	--	--	+9	+0.2	+1.6	+2.0	--	--
Accuracy	59%	49%	47%	51%	42%	%	%	38%	27%	33%	33%	%	
Rank Top		50%	50%										

Weights - BW 32kg 200d 242kg 400d 400kg 600d 670kg Scrotal 40cm

Scans - EMA 82cm² Rib 6mm Rump 12mm IMF 3.6%

Comments – Resultant calf from the purchase of dam from Wingfield stud QLD. Sire has the renown Lamont Inmate in bloodline. A naturally good bull. Naturally soft with no extra feed. Our Droughtmasters are paddock reared and no feeding. Easy doing, profitable cattle. Recently South Devon x Droughtmaster steers averaged \$1,537.38 at market. EBV's are relatively new, figures and accuracy will improve over time.



Fertility - Low Birth Weights – Good Growth – Excellent Carcass

www.davelle.com.au

Lot 31 Davelle Nitro D5


DVL17006M

DOB 3/4/2017

Polled

Huntly Earthquake (P) D5
Sire: Strathfield Xplode (P) D5
Strathfield Pacific (P) D5

Glenlands D 08/774 (P) D5
Dam: Glenlands 13464 (P) D5
Glenlands 4024 (P) D5

	Birth Wt. (kg)	200 Day Wt. (kg)	400 Day Wt. (kg)	600 Day Wt. (kg)	Mat. Cow Wt. (kg)	Milk (kg)	Scrotal Size (cm)	Carcase Wt. (kg)	Eye Muscle Area (sq.cm)	Rib Fat (mm)	Rump Fat (mm)	Retail Beef Yield (%)	IMF %
BreedPlan EBV	-0.1	+10	+15	+20	+24	+3	--	+11	--	--	--	--	--
Accuracy	34%	34%	33%	33%	26%	29%	%	27%	%	%	%	%	
Rank Top		50%	50%										

Weights - BW 38kg 200d 280kg 400d 413kg 600d 574kg Scrotal 37cm

Scans - EMA 93cm² Rib 5mm Rump 8mm IMF 2.2%

Comments – Really like this Droughtmaster. A sound all round package. Impressive raw data. AI son of Strathfield Xplode from a great performing Glenlands cow. Our Droughtmasters are paddock reared and no feeding. Easy doing, profitable cattle. Recently South Devon x Droughtmaster steers averaged \$1,537.38 at market. EBV's are relatively new, figures and accuracy will improve over time.



Fertility - Low Birth Weights – Good Growth – Excellent Carcass

www.davelle.com.au

Semen List as at 1/1/2019

All straws are stored at NHD Murray Bridge and are priced ex Murray Bridge.

Special Offer – for any straws purchased we'll match straw for straw with Davelle UB Righton H26



Davelle Awesome Reg D8 (DVPD8)

Polled

Sire: Paltarra Awesome

Dam: Dukes Flat Yesterday

Has produce great cattle with strong fleshing. For best results use over milky types needing muscle
60 straws available



Davelle UB Righton H26 (DVPH26)

Polled

Sire: Paltarra Ubquiet

Dam: Lincoln Rose 28

All round type and performance. Leaving great females in our herd.

400 straws left over from export order



MJB United 333U (IRAPD333)

Polled

Sire: MJB Romeo 125R

Dam: MJB Sunlight 6335S

Imported from the US

Breeds great maternal types

80 straws available

Prices inc GST–

Davelle Awesome Reg D8	\$16.50
Davelle UB Righton H26	\$22.00
MJB United 333U	\$22.00
Burtergill Harry 815	\$22.00
Burtergill Henry 1105	\$55.00
Davelle Black Ace K2	\$33.00
Davelle Cool Beau N51	\$33.00



Fertility - Low Birth Weights – Good Growth – Excellent Carcass

www.davelle.com.au



Davelle Black Ace K2 (DVPK2)

Sire: Davelle Awesome Reg D8
Dam: Davelle Black Annie G6

Exported to MJB Ranch USA
Use to moderate and add muscle
Very impressed with progeny
120 straws available



Burtergill Harry 815 (INUPD3013))

Polled
Sire: Burtergill Charlie 9
Dam: Burtergill Charles Bell 32

Imported from New Zealand
Burtergill are recognised South Devon breeders in
New Zealand.
Leaves great bodied animals with great maternal
traits. Only 20 straws left



Burtergill Henry 1105

Polled
Sire: Burtergill Henry 3
Dam: Burtergill Jack Susie 11

New import from New Zealand
Sons and daughters performing well
True South Devon type.
Only 60 straws



Davelle Cool Beau N51 (DVPN51)

Polled
Sire: MJB Cool 548C
Dam: Davelle Progress Blossom H57

Type and performance
High \$Profit bull at \$32,161
Semen available from Genetics Australia or your
local supplier.

Please call us for orders or more information on
any sire listed



Fertility - Low Birth Weights – Good Growth – Excellent Carcass

www.davelle.com.au