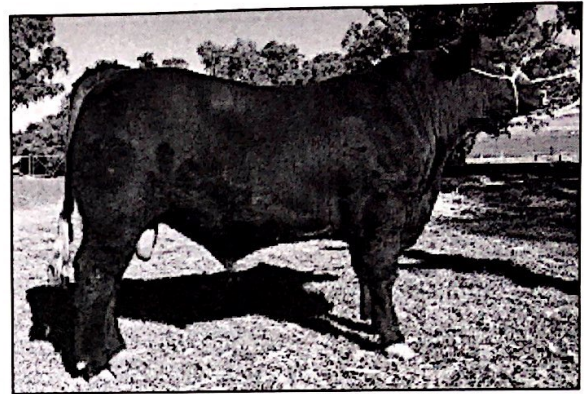


Red Angus Animal Pedigree JINDELLISTON PARK NUTCRACKER N13 NECN13

[First](#) [Previous](#) [Next](#) [Last](#)

[Home](#)
 [Animal Enquiry](#)
 [EBV Enquiry](#)
 [Mating Predictor](#)
 [Member Enquiry](#)
 [Sale Catalogues](#)
 [Semen Catalogues](#)
 [Download Files](#)
 [Online Transactions](#)

Identifier: NECN13
Sex: Male
Birth Date: 02/10/2017
Reg. Status: Registered
Breeder: ELLIOTT AND ALLYSON CONNORS
Curr. H&M CATTLE CO & KARAWI HILL STUD
Owner: P/L



[View Larger Image: 201.2kb](#)

— GUMBO GULCH CREED 94S (BLACK) (AMF) (NHF) CANM1328102
 — DMM CREED 75W (BLACK RC) (AMF) (MAF) (NHF) (OSF) CANM1526335
 — RED DMM ESSENCE 156P CANF1526292
Sire: T&R JUDGEMENT DAY J36 (ET) (AMF) (MAF) (NHF) (OSF) TRHJ36
 — RED TER-RON REALDEAL 01W (AMF) (MAF) (OSF) CANM1491496
 — BST TULLATOOLA UTOPIA G53 (AI) BSTG053
 — BST TULLATOOLA UTOPIA Y19 (TWIN) (AMF) (MAF) (NHF) (OSF) BSTY019

Animal: JINDELLISTON PARK NUTCRACKER N13 NECN13

— RED NORTHLINE ROB ROY 122K (MAF) (OSF) CANM1035334
 — RED DMM BRYLOR THUMP 2T (MAF) (OSF) CANM1399230
 — RED STEN ESSENCE 42G CANF903849
Dam: JINDELLISTON PARK WHISPER G9 (AI) NECG9
 — RED BRYLOR GOLD 55H CANM923176
 — AMAROO PARK WHISPER X7 WAMX7
 — IBR RED WHISPER N518 (AI) (ET) (MAF) IBRN518

August 2019 Red Angus BREEDPLAN

	Calving Ease Dir (%)	Calving Ease Dtrs (%)	Gestation Length (days)	Birth Wt (kg)	200 Day Wt (kg)	400 Day Wt (kg)	600 Day Wt (kg)	Mat Cow Wt (kg)	Milk (kg)	Scrotal Size (cm)	Carcase Wt (kg)	Eye Muscle Area (sq cm)	Rib Fat (mm)	Rump Fat (mm)	Retail Beef Yield (%)	IMF (%)
EBV	-4.9	-	+0.3	+3.7	+26	+30	+47	+45	+12	+0.2	+27	+0.6	-0.4	-0.4	+1.0	-0.2
Acc	32%	-	43%	74%	59%	54%	55%	45%	29%	39%	38%	25%	32%	32%	30%	26%