

THE LONGYARD LIMOUSIN SALE

SALE START 12 NOON

**1711 MARSDEN PARK RD,
LOOMBERAH NSW**



Find us on
Facebook

**AGENT: SCOTT NEWBERRY
PH: 0447-624-440**

**23
AUGUST**

19 BULLS BLACK & APRICOT ALL POLLED SOME HOMO POLLED



LOT 1

HARLEES JOCKN5



LOT 2

HARLEES VENTURE CAPITAL N62



LOT 3

HARLEES JOCK N18



LOT 4 WARRIGAL PROVEN IDENTITY P5

★ WELCOME ★

The 4th annual Longyard Limousin sale will be held on the 23rd August 2019 at On Property – 1711 Marsden Park Rd, Loomberah, 20km south of Tamworth, NSW. This year 19 high performance bulls will be offered. Whether you are looking for a sire to put some extra weight in your next drop of calves or searching for your next stud sire, this quality line up will have a bull to suit your purpose. Due to environmental conditions the bulls have had minimum supplementary feeding and running on forage Oats. Under such trying conditions the bulls have still performed well and will be presented in good condition, ready to work. It is under these conditions that the durability of Limousins stand out and the traits that the market is chasing, such as ability to put on fat, also link to surviving in tough times.

Again, this year progeny of previous Longyard sires have done well in carcass competitions with ribbons at Sydney Royal and Wingham Beef Week. Just more proof about the quality that is under the skin of the Longyard Limousin bulls. Features sires of this years draught of bulls include AI sires TMF Westwood, LFLC Zest and herd sires Harless Mr Jock and Warrigal LeBron.

THE LONGYARD LIMOUSIN ★ BULL SALE ★

**FRIDAY 23RD AUGUST
ON FARM**

Commencing 12pm
Viewing from 10.00am

Offering 19 Performance Recorded Bulls

Find us on 

www.facebook.com/TheLongyardLimousinSale

CONTACTS



Andrew Harries
0488 735 615
Harlees



Freecall 1800 814 107
www.arrowquip.com.au
Arrow Farmquip



Paul and Janelle Relf
0427 915 152
Warrigal

SELLING AGENT

Davidson Cameron & Co
Scott Newberry - 0447 624 440



Davidson Cameron & Co

A RURALCO BUSINESS

Scott Newberry 0447 624 440

Luke Scicluna 0428 421 828

Sale Day - Cattle are available for inspection from 10.00 am at Harlees Limousins 1711 Marsden Park Rd Loombrah

Buyers Registration - Buyers number system will be in operation at the sale. Buyers must register prior to the sale. There is good mobile reception so phone bidding will be available. Please contact the agent prior to sale to organise phone bids. Online bidding is available with Auctions Plus. If bidding online you must pre register with auctions plus (See info page 9)

GST - will be added to the purchase price at the fall of the hammer

Delivery/Carriers - will be available on the day. Assistance will be given to coordinate delivery of bulls for those who require it.

Fertility - All bulls have been semen checked and will be sold with a fertility certificate and have been physically checked and deemed capable of service.

Insurance - it is the responsibility of the purchaser to insure their Bulls. Representatives from insurance companies will be on hand at the sale.

Rebate - 2% to outside agents introducing buyers in writing 24 hours prior to the sale

Terms and conditions - As displayed on sale day

Accommodation - There are many hotels in Tamworth and flights daily from Sydney and Brisbane.



Can't make the sale? Log onto AuctionsPlus to bid from

- 1 REGISTER ONLINE**
Simply click Sign Up to begin your free registration. To register as a buyer for livestock, you will need to provide us with a few more details.

- 2 COMPLETE BUYER INDUCTION**
The buyer induction will help you understand the roles and responsibilities of everyone on the AuctionsPlus system.

- 3 VIEW CATALOGUE**
Photos, videos, pedigrees and other information will be available in the online catalogue.

- 4 ENTER AUCTION**
Log into the auction anytime, anywhere and bid on your mobile, tablet or computer.

- 5 AUTO BID**
Can't stay for the whole sale? Set your maximum bid on the lot that you want to purchase and let the computer bid for you.

- 6 CONTACT SELLING AGENT**
If successful, contact selling agent directly after the sale to arrange payment.

- 7 DELIVERY**
Arrange transport of livestock at your expense.

***Contact AuctionsPlus on (02) 9262 4222
or www.auctionsplus.com.au***

Explanation of the Suffixes to Animal Names

Horn Status : (HP*) Homozygous Polled by DNA test (which has an accuracy of 92%), (HP) Homozygous Polled by progeny test, (2P) Homozygous Polled by pedigree, (P) Polled, (S) Scurred.

Colour : (HB) DNA tested Homozygous Black, (2B) Homozygous Black by pedigree, (B) Black, (R) Red (not apricot).

Protoporphyrin Status : (PN) Proto Normal, (PF) Proto free by pedigree, (PC) the animal is a carrier of the abnormal gene for protoporphyria, (PS) Proto Suspect (parent of diseased animal), (PU) the animal has not been tested for protoporphyria or have parents which have been tested normal or are free by pedigree.

Homozygous : is the term where an animal has two copies of a particular gene (tested or pedigree) for a trait (colour, polled). An example is Homozygous polled where by all progeny will be polled from that particular animal or Homozygous black where all progeny will be black.

F94L : (AA) 2 copies, (AC) 1 copy, (2A) 2 copies by pedigree, (CC) no copies.

Understanding EBVs

An Estimated Breeding Value (EBV) is an estimate of the genetic merit of that animal for each trait measured. EBVs are provided for the following traits:

Birth Weight EBV : this EBV indicates the genetic potential for birth weight. Positive EBVs indicate higher birth weights and negative EBVs indicate lower birth weights of progeny.

Calving Ease Direct EBV : this EBV indicates the influence of the sire on calving ease. Sires with positive EBVs for calving ease will increase calving ease and sires with negative EBVs will decrease calving ease.

Milk EBV : an important component of fast growth to weaning is the dam's maternal performance. A bull with a high milk EBV should produce daughters which milk well.

200, 400 & 600 Day Weight EBVs : these EBVs give us an estimation of the animal's genetic potential for growth.

Scrotal Size EBV : the scrotal size EBV indicates whether the bull will produce sons with above average or below average scrotal sizes.

Docility EBV : the docility EBV is expressed as the increase or decrease in the percentage of progeny that will be scored as docile (score 1 or 2). Positive EBVs indicate a higher proportion of progeny that will be scored as docile and negative EBVs indicate a lower percentage of progeny being scored as docile.

Comparing EBVs

The EBVs for Limousins cannot be compared with EBVs for animal of other breeds. They should be compared with the current average EBV for the Limousin breed shown below.

AVERAGE EBVs for 2014 BORN LIMOUSIN CALVES

Gest	B.Wt.	Milk	200	400	600	SS	Doc
-1.5	+1.6	+5	+17	+29	+40	+0.8	+35

Accuracies

Accuracies are presented with each EBV and give an indication of the amount of information that has been used in the calculation of that EBV. The higher the accuracy the lower the likelihood of change in the animal's EBV as more information is analyzed for that animal and its relatives.

Lot 1**HARLEES JOCK N5***Vendor: A Harries & J Lees***Ident:** HLLPN5**DOB:** 07/01/2017**Grade:** Pure (90.51)**Black****Polled**

LVLS POLLED JUSTICE 0601E (PEDPB9260) (PU)

HUNT MR JOCK 44J (IMUPU44) (P) (B) (PN) (AA)

HUNT MISS GIGGLE 129G (PEDPB9263) (PU)

Sire: HARLEES MR JOCK (HLLPG14) (P) (B) (PF)

WULFS NOBEL PRIZE 3861N (IMUPY3861) (HP) (B) (PN) (AA)

MANDAYEN CONNIE C857 (MDNPC857) (2P) (B) (PF)

CASTLEREAGH CONNIE R37 (APWPR37) (HP) (HB*) (PN)

WULFS GUARDIAN 5074G (IMUPS5074) (P) (B) (PN) (AA)

RAMORNIE SENTINEL W016 (SLTPW16) (P) (B) (PN)

RAMORNIESPRY KRYSTAL P48 (TWRPP48) (P) (PF)

Dam: DONNA VALLEY ENTICING BERRY (MGWPE499) (P) (PF)

EXLR LATIGO 029M (IMUPX29) (P) (PN)

DONNA VALLEY STRAWBERRY B881 (MGWPB881) (HP*) (R) (PF) (AC)

DONNA VALLEY POLL WHITE HOPE (MGWPW860) (HP*) (PF) (AA)

June 2019 Southern Limousin GROUP BREEDPLAN

	BWT	200	400	600	MLK	SS	DOC
EBV	+1.1	+21	+44	+59	+8	+1.0	+46
<i>Acc</i>	66%	60%	59%	58%	46%	46%	55%

Traits Observed: BWT,DOC

A reflection of the modern limousin, muscle volume with the ability to cover.
Combines reliable Mandayen and Donna Valley genetics. N5 has low birth, high growth and positive fats.

Purchaser:..... Price:.....

Lot 2**HARLEES VENTURE CAPITAL N62***Vendor: A Harries & J Lees***Ident:** HLLPN62**DOB:** 14/10/2017**Grade:** Pure (89.91)**Black****Polled**

WULFS TITUS 2149T (IMUPT2149) (P) (B) (PN)

WULFS XTRACTOR X233X (IMUPF233) (HP*) (PN) (AA)

WULFS MYRLENE 2332M (IMUPD9461) (PU)

Sire: SUMMIT VENTURE CAPITAL J26 (HLGPJ26) (HP*) (B) (PN) (AA)

WULFS QUARTERBACK 4222B (IMUPM8276) (P) (B) (PN) (AA)

MISS WULFETTE 9093J (IMUPU9758) (P) (B) (PU)

WULFS EMLYN 5035E (PEDPQ6187) (P) (B) (PU)

WULFS GUARDIAN 5074G (IMUPS5074) (P) (B) (PN) (AA)

PREMIER GUARDIAN V77 (PREPV77) (P) (B) (PF)

WHITE LAKES EXOTIC (WLPE20) (PN)

Dam: HARLEES DAPHNE L28 (HLLPL28) (P) (B) (PF)

MANDAYEN VISION Y329 (MDNPY329) (HP) (B) (PN) (AA)

MANDAYEN DAPHNE C1017 (MDNPC1017) (P) (B) (PF)

RAMORNIE DAPHNE Y0001 (SLTPY1) (P) (B) (PF)

June 2019 Southern Limousin GROUP BREEDPLAN

	BWT	200	400	600	MLK	SS	DOC
EBV	+0.2	+21	+39	+55	+8	+1.0	+49
<i>Acc</i>	65%	58%	56%	57%	41%	42%	53%

Traits Observed: CE,BWT,DOC

This bull is powering away which reflects the well known animals in his pedigree. He is out of one of our most reliable foundation cows and combines muscle and milk with length and width. He is a heifers first calf and has still made the grade, despite the very tough environmental conditions.

Purchaser:..... Price:.....



LOT 5

WARRIGAL ZANDER N4



LOT 6

HARLEES YONKERS N31



LOT 7

HARLEES YONKERS N37



LOT 8 HARLEES VENTURE CAPITAL N52



LOT 9 WARRIGAL NIGHT RIDER N12



LOT 10 RYRADAN PARK PHOENIX P1



LOT 11 HARLEES WESTWOOD N47



LOT 12

HARLEES ZEST N55



LOT 13

HARLEES JOCK N22



LOT 14

WARRIGAL PRIME STAR P3



LOT 15 WARRIGAL NIGHTVISION N18



LOT 16

WARRIGAL LIMFLEX

Lot 3**HARLEES JOCK N18***Vendor: A Harries & J Lees***Ident:** HLLPN18**DOB:** 20/03/2017**Grade:** Pure (92.16)**Black****Polled**

LVLS POLLED JUSTICE 0601E (PEDPB9260) (PU)

HUNT MR JOCK 44J (IMUPU44) (P) (B) (PN) (AA)

HUNT MISS GIGGLE 129G (PEDPB9263) (PU)

Sire: HARLEES MR JOCK (HLLPG14) (P) (B) (PF)

WULFS NOBEL PRIZE 3861N (IMUPY3861) (HP) (B) (PN) (AA)

MANDAYEN CONNIE C857 (MDNPC857) (2P) (B) (PF)

CASTLEREAGH CONNIE R37 (APWPR37) (HP) (HB*) (PN)

CURREEKI PARK B028 (NMPPB28) (PU)

HARLEES CHEETAH (HLLPG3) (S) (B) (PU)

CURREEKI PARK D015 (NMPPD15) (P) (B) (PU)

Dam: HARLEES JENNY (HLLPJ50) (P) (PU)

JCL ROYAL FLUSH (IMUPT82) (P) (R) (PN) (AC)

DONNA VALLEY PATIENCE Y219 (MGWPY219) (P) (PF)

DONNA VALLEY PATIENCE+94 (MGWFP198+94) (PF)

June 2019 Southern Limousin GROUP BREEDPLAN

	BWT	200	400	600	MLK	SS	DOC
EBV	+1.9	+24	+43	+58	+14	+1.0	+41
<i>Acc</i>	55%	52%	52%	50%	40%	41%	52%

Traits Observed: BWT,DOC

Eye catching from a calf. N18 has depth and width with the reliability of Jock to produce steer calves that will finish and heifers to retain as breeders.

Purchaser:..... Price:.....

Lot 4**WARRIGAL PROVEN IDENTITY P5***Vendor: Paul & Janelle Relf***Ident:** JPRPP5**DOB:** 13/02/2018**Grade:** Pure (93.26)**Black****Hetero Polled (by DNA test)**

FLEMINGTON BONANZA B6 (FPPB6) (P) (PF)

FLEMINGTON EXCEPTION E19 (FPPE19) (PN) (AA)

FLEMINGTON UNREAL (FPPU6) (PN)

Sire: WARRIGAL LEBRON L12 (JPRP12) (P) (B) (PF)

WULFS NOBEL PRIZE 3861N (IMUPY3861) (HP) (B) (PN) (AA)

MANDAYEN POLLED WYNNE D1122 (MDNPD1122) (P) (B) (PF)

MANDAYEN POLLED WYNNE (MDNPW134) (P) (PN)

MANDAYEN VISION Y329 (MDNPY329) (HP) (B) (PN) (AA)

MANDAYEN VISION C1054 (MDNPC1054) (HP*) (B) (PF) (AA)

RAMORNIE AKELA W17 (SLTPW17) (P) (B) (PN)

Dam: WARRIGAL FOXY LADY (JPRPF7) (HP*) (PU)

WULFS EXPLOSION 0184E (IMUPQ184) (P) (B) (PN) (AA)

KIPPAX VALLEY SHESCHARMING (KVLPA6) (P) (PU)

KIPPAX VALLEY SHESACHARMER (KVLPU1) (PU)

June 2019 Southern Limousin GROUP BREEDPLAN

	BWT	200	400	600	MLK	SS	DOC
EBV	+2.7	+24	+44	+66	+11	+0.4	+60
<i>Acc</i>	53%	56%	52%	51%	43%	38%	52%

Traits Observed: 200WT,DOC

Chip off the old block, bred from the best with the combination of our top 2 females. A well balanced bull with exceptional growth for age, just 18 months. Sired by Warrigal LeBron 2017 sale topper. With the add softness, depth, docility and strength of pedigree all in one package making P5 a top sire prospect.

Purchaser:..... Price:.....

Lot 5 WARRIGAL ZANDER N4

Vendor: Paul & Janelle Relf

Ident: JPRPN4 **DOB:** 13/02/2017 **Grade:** Pure (92.18)

Black Polled

WULFS ROPER 2523R (PEDPA500) (S) (B) (PU)
 WULFS UNCONQUERED 5517U (PEDPD150) (P) (B) (PU)
 WULFS RELAY RACE 5517R (PEDPA251) (P) (HB*) (PU)
Sire: WULFS ZANDER X921Z (IMUPH921) (HP*) (B) (PN)
 WULFS EVAN 9052E (PEDPK9445) (PU)
 WULFS JOY BELLS 9202J (IMUPU9202) (PU)
 WULFS ENJOYABLE 5009E (PEDPW9444) (PU)
 LVLS POLLED JUSTICE 0601E (PEDPB9260) (PU)
 HUNT MR JOCK 44J (IMUPU44) (P) (B) (PN) (AA)
 HUNT MISS GIGGLE 129G (PEDPB9263) (PU)
Dam: WARRIGAL GODESS (JPRPG19) (B) (PF)
 WLCC NO SUBSTITUTE 1141 (IMUFE169) (PN)
 MANDAYEN STARR (MDNFS17) (PN)
 SUNTOWNER BERTHA (STRFB20) (PU)

June 2019 Southern Limousin GROUP BREEDPLAN

	BWT	200	400	600	MLK	SS	DOC
EBV	+1.0	+21	+39	+52	+8	+0.9	+46
<i>Acc</i>	<i>69%</i>	<i>65%</i>	<i>65%</i>	<i>63%</i>	<i>47%</i>	<i>54%</i>	<i>61%</i>

Traits Observed: GL,BWT,200WT,400WT,600WT,DOC

Oldest bull in the Warrigal draft. Low birth weight, black polled easy fleshing bull and as long as a train. Maternal brother to Warrigal Levi was Grand Champion steer Sydney Royal 2016.

Purchaser:..... Price:.....

Lot 6 HARLEES YONKERSN31

Vendor: A Harries & J Lees

Ident: HLLPN31 **DOB:** 25/09/2017 **Grade:** Pure (91.47)

Black Polled

WULFS NASA 1212N (PEDPD9458) (PU) (AC)
 WULFS UPPERMOST 6196U (IMUPD6196) (HP*) (B) (PN) (AC)
 WULFS SKYLA 6196S (PEDPB9822) (P) (B) (PU)
Sire: WULFS YONKERS K682Y (IMUPG682) (HP*) (B) (PN) (AA)
 WULFS NOBEL PRIZE 3861N (IMUPY3861) (HP) (B) (PN) (AA)
 WULFS SOLOIST 6284S (PEDPB9126) (HP*) (PU)
 WULFS JOY BELLS 9202J (IMUPU9202) (PU)
 WULFS EXPLOSION 0184E (IMUPQ184) (P) (B) (PN) (AA)
 STEVENS MONSOON (GHSPB17) (P) (B) (PF)
 STEVENS MOONSHINE T9 (GHSPT9) (HP) (B) (PF)
Dam: HARLEES AMELIA (HLLPF2) (P) (B) (PF)
 RAMORNIE CHOICE V27 (SLTPV27) (P) (PF)
 RAMORNIE KRYSTAL Z4 (SLTPZ4) (P) (B) (PF)
 RAMORNIE KRYSTAL X0004 (SLTPX4) (P) (B) (PF)

June 2019 Southern Limousin GROUP BREEDPLAN

	BWT	200	400	600	MLK	SS	DOC
EBV	+0.7	+19	+39	+54	+9	+1.1	+57
<i>Acc</i>	<i>65%</i>	<i>58%</i>	<i>58%</i>	<i>58%</i>	<i>45%</i>	<i>49%</i>	<i>52%</i>

Traits Observed: GL,CE,BWT,DOC

Top of the growth for age for this years N bulls. He is big, docile and soft. His sire has produced many good bulls that are suited to a number of markets.

Purchaser:..... Price:.....

Lot 7**HARLEES YONKERSN37***Vendor: A Harries & J Lees***Ident:** HLLPN37**DOB:** 27/09/2017**Grade:** Pure (91.75)**Black****Polled**

WULFS NASA 1212N (PEDPD9458) (PU) (AC)

WULFS UPPERMOST 6196U (IMUPD6196) (HP*) (B) (PN) (AC)

WULFS SKYLA 6196S (PEDPB9822) (P) (B) (PU)

Sire: WULFS YONKERS K682Y (IMUPG682) (HP*) (B) (PN) (AA)

WULFS NOBEL PRIZE 3861N (IMUPY3861) (HP) (B) (PN) (AA)

WULFS SOLOIST 6284S (PEDPB9126) (HP*) (PU)

WULFS JOY BELLS 9202J (IMUPU9202) (PU)

WHITE LAKES VISION 2000 (WLPV24) (S) (PF) (AA)

MANDAYEN VISION Y329 (MDNPY329) (HP) (B) (PN) (AA)

CASTLEREAGH CONNIE R37 (APWPR37) (HP) (HB*) (PN)

Dam: HARLEES JACKIE (HLLPJ14) (P) (B) (PF)

STEVENS MONSOON (GHSPB17) (P) (B) (PF)

HARLEES AMEILIA (HLLPF2) (P) (B) (PF)

RAMORNIE KRYSTAL Z4 (SLTPZ4) (P) (B) (PF)

June 2019 Southern Limousin GROUP BREEDPLAN

	BWT	200	400	600	MLK	SS	DOC
EBV	+0.7	+21	+41	+58	+12	+1.0	+64
<i>Acc</i>	<i>66%</i>	<i>59%</i>	<i>59%</i>	<i>58%</i>	<i>43%</i>	<i>49%</i>	<i>53%</i>

Traits Observed: GL,CE,BWT,DOC

Another Yonkers bull that combines volume and cover. Great set of EBVs that are backed up by his phenotype.

Purchaser:..... Price:.....

Lot 8**HARLEES VENTURE CAPITALN52***Vendor: A Harries & J Lees***Ident:** HLLPN52**DOB:** 03/10/2017**Grade:** Pure (90.75)**Black****Polled**

WULFS TITUS 2149T (IMUPT2149) (P) (B) (PN)

WULFS XTRACTOR X233X (IMUPF233) (HP*) (PN) (AA)

WULFS MYRLENE 2332M (IMUPD9461) (PU)

Sire: SUMMIT VENTURE CAPITAL J26 (HLGPJ26) (HP*) (B) (PN) (AA)

WULFS QUARTERBACK 4222B (IMUPM8276) (P) (B) (PN) (AA)

MISS WULFETTE 9093J (IMUPU9758) (P) (B) (PU)

WULFS EMLYN 5035E (PEDPQ6187) (P) (B) (PU)

HC OVERTIME 972 (IMUPU972) (P) (B) (PN)

HC FINAL TIME 407 (IMUPZ407) (HP) (B) (PN) (AC)

HC POLLED CANDY 763 (IMUPS763) (P) (R) (PU)

Dam: MANDAYEN VIOLET E1498 (MDNPE1498) (P) (B) (PN)

WULFS GUARDIAN 5074G (IMUPS5074) (P) (B) (PN) (AA)

MANDAYEN X197 (MDNXP197) (PU)

MANDAYEN VIOLET (MDNPV97) (PU)

June 2019 Southern Limousin GROUP BREEDPLAN

	BWT	200	400	600	MLK	SS	DOC
EBV	+0.1	+17	+37	+49	+6	+1.6	+49
<i>Acc</i>	<i>69%</i>	<i>61%</i>	<i>60%</i>	<i>61%</i>	<i>45%</i>	<i>45%</i>	<i>56%</i>

Traits Observed: GL,CE,BWT,DOC

Another soft bull with depth and width. The only Venture Capital bull in the sale.

Purchaser:..... Price:.....

Lot 9 WARRIGAL NIGHT RIDER N12

Vendor: Paul & Janelle Relf

Ident: JPRPN12 **DOB:** 03/09/2017 **Grade:** Pure (90.59)
Apricot **Homo. Polled (by DNA test)**

JCL LODESTAR 27L (PEDPW9275) (HP*) (B) (PU) (AC)
 KAJO RESPONDER 120R (PEDPA3144) (HP) (2B) (PN)
 KAJO SHERYL SWOOPS 11H (PEDPT3498) (P) (B) (PU)
Sire: RPY PAYNES DERBY 46Z (IMCPH46) (2P) (B) (PN) (AA)
 IVY'S POLLED MOLTEN 14M (PEDPC9363) (PU)
 IVY'S POLLED PRINCESS 1P (IMCPZ1) (HP*) (PN)
 EXLR JENNA 020L (PEDPC9362) (PU)

COLE WULF HUNT (IMUPB9207) (P) (HB*) (PN) (AA)
 WULFS NOBEL PRIZE 3861N (IMUPY3861) (HP) (B) (PN) (AA)
 WULFS CASUAL 3161C (PEDPB9209) (PU)
Dam: MANDAYEN POLLED ULTRA C897 (MDNPC897) (HP*) (PF)
 WULFS RAMBLER 8400X (IMUPJ8082) (S) (R) (PN) (AA)
 MANDAYEN X198 (MDNPX198) (P) (R) (PF)
 MANDAYEN POLLED ULTRA (MDNPU70) (P) (PN)

June 2019 Southern Limousin GROUP BREEDPLAN

	BWT	200	400	600	MLK	SS	DOC
EBV	+2.4	+29	+52	+65	+11	+1.7	+10
<i>Acc</i>	<i>70%</i>	<i>67%</i>	<i>67%</i>	<i>69%</i>	<i>48%</i>	<i>52%</i>	<i>63%</i>

Traits Observed: GL,BWT,200WT,400WT,600WT,DOC

Homo polled, apricot bull who is an absolute power house, massive carase, full of red meat but still retaining softness. We used Night Rider to cover up our spring drop calvers.

Purchaser:..... Price:.....

Lot 10 RYRADAN PARK PHOENIX P1

Vendor: Ryan & Rachel Relf

Ident: RRDP1 **DOB:** 25/02/2018 **Grade:** Pure (93.78)
Red **Hetero Polled (by DNA test)**

JCL LODESTAR 27L (PEDPW9275) (HP*) (B) (PU) (AC)
 KAJO RESPONDER 120R (PEDPA3144) (HP) (2B) (PN)
 KAJO SHERYL SWOOPS 11H (PEDPT3498) (P) (B) (PU)
Sire: RPY PAYNES DERBY 46Z (IMCPH46) (2P) (B) (PN) (AA)
 IVY'S POLLED MOLTEN 14M (PEDPC9363) (PU)
 IVY'S POLLED PRINCESS 1P (IMCPZ1) (HP*) (PN)
 EXLR JENNA 020L (PEDPC9362) (PU)

MANDAYEN VISION Y329 (MDNPY329) (HP) (B) (PN) (AA)
 MANDAYEN VISION C1054 (MDNPC1054) (HP*) (B) (PF) (AA)
 RAMORNIE AKELA W17 (SLTPW17) (P) (B) (PN)
Dam: RYRADAN PARK GABRIELLE (RRDPG2) (P) (PF)
 BILATI XAVIER (BLTFX418) (PN)
 DONNA VALLEY AVRIL (MGWFA195) (PN)
 REDLAC UFFICIO (DUJFU74) (PU)

June 2019 Southern Limousin GROUP BREEDPLAN

	BWT	200	400	600	MLK	SS	DOC
EBV	+2.4	+26	+47	+70	+11	+1.3	+7
<i>Acc</i>	<i>67%</i>	<i>65%</i>	<i>66%</i>	<i>63%</i>	<i>44%</i>	<i>49%</i>	<i>61%</i>

Traits Observed: BWT,200WT,400WT,DOC

Red and polled, P1 is full of performance, long and square across the top. Ideal vealer bull to put some shape and add performance into your calvers.

Purchaser:..... Price:.....

Lot 11 HARLEES WESTWOODN47

Vendor: A Harries & J Lees

Ident: HLLPN47 **DOB:** 30/09/2017 **Grade:** Pure (94.33)

Apricot **Polled**

ROMN MADE TO ORDER (IMUPE9608) (P) (PN)
 TMF TANKARD 206T (PEDPC9773) (P) (PU)
 MAGS MAYFLOWER (IMUPX887) (PU)
Sire: TMF WESTWOOD 505W (IMCPE6387) (HP*) (PN) (AA)
 EXLR LIMITED EDITION 622L (PEDPW9770) (P) (PU)
 TOP MEADOW 902P (PEDPZ9772) (P) (PU)
 TOP MEADOW 602L (PEDPW9771) (B) (PU)
 ALDWYCK JAKE (IMBFP111) (PN)
 TIMOR XECUTIVE (TRFX26) (PF)
 TIMOR KATHERINE (TRFS143) (PN)
Dam: CURREEKI PARK B014 (NMPPB14) (P) (PU)
 WULFS CHOICE 1026C (IMUPN1026) (HP) (PN)
 CURREEKI PARK BONNY WULF (NMPPW9) (P) (PU)
 CURREEKI PARK BONNY 1 (NMPPQ21) (PU)

June 2019 Southern Limousin GROUP BREEDPLAN

	BWT	200	400	600	MLK	SS	DOC
EBV	+1.8	+23	+41	+55	+12	+1.2	+55
<i>Acc</i>	68%	61%	60%	60%	54%	51%	59%

Traits Observed: GL,CE,BWT,DOC

A strong, larger framed bull will plenty of volume. He is out of a cow with great milk and a sire packed with meat. The only Westwood bull in the sale.

Purchaser:..... Price:.....

Lot 12 HARLEES ZESTN55

Vendor: A Harries & J Lees

Ident: HLLPN55 **DOB:** 05/10/2017 **Grade:** Pure (91.92)

Apricot **Polled**

HSF UNDERTAKER (PEDPD86) (P) (B) (PU)
 WULFS X-AGGERATE J657X (PEDPF411) (HP*) (B) (PU)
 WULFS STEPPING STONE 6507 (PEDPB569) (P) (B) (PU)
Sire: LFLC ZEST 51Z (IMUPH51) (HP*) (PN) (AA)
 JCL LODESTAR 27L (PEDPW9275) (HP*) (B) (PU) (AC)
 PLND REBA 521R (PEDPA175) (P) (B) (PU)
 PLND GRETA 144G (PEDPS566) (P) (R) (PU)
 OAKVALE XERXES (DWRPX1) (S) (B) (PN)
 JAARNELLA XERXES (ARMPB604) (P) (B) (PF)
 WHITE LAKES UNIQUELY ROYAL (WLP23) (P) (B) (PF)
Dam: JAARNELLA WHIRL E926 (ARMPE926) (P) (B) (PF)
 DVFC COOKIE MONSTER 108H (IMUPT108) (P) (B) (PN) (AA)
 MANDAYEN WHIRL B769 (MDNPB769) (P) (B) (PF)
 MANDAYEN WHIRL (MDNPW181) (P) (PF)

June 2019 Southern Limousin GROUP BREEDPLAN

	BWT	200	400	600	MLK	SS	DOC
EBV	+1.2	+16	+32	+40	+7	+0.8	+44
<i>Acc</i>	69%	61%	59%	60%	35%	43%	55%

Traits Observed: GL,CE,BWT,DOC

N55 will add punch to any breeding program. He is a moderate framed muscular apricot bull with eye appeal. His sire, Zest, has also impressed with the females he has produced. A bull that could be used to produce vealers and replacement heifers.

Purchaser:..... Price:.....

Lot 13**HARLEES JOCKN2***Vendor: A Harries & J Lees***Ident:** HLLPN22**DOB:** 14/08/2017**Grade:** Pure (90.35)**Apricot****Polled**

LVLS POLLED JUSTICE 0601E (PEDPB9260) (PU)

HUNT MR JOCK 44J (IMUPU44) (P) (B) (PN) (AA)

HUNT MISS GIGGLE 129G (PEDPB9263) (PU)

Sire: HARLEES MR JOCK (HLLPG14) (P) (B) (PF)

WULFS NOBEL PRIZE 3861N (IMUPY3861) (HP) (B) (PN) (AA)

MANDAYEN CONNIE C857 (MDNPC857) (2P) (B) (PF)

CASTLEREAGH CONNIE R37 (APWPR37) (HP) (HB*) (PN)

FROGHOLLOW X-MAN X114 (MCFPX114) (P) (R) (PN)

DONNA VALLEY P FINDERS FEE (MGWPF773) (P) (PF)

DONNA VALLEY PATIENCE Y219 (MGWPY219) (P) (PF)

Dam: HARLEES JOCELYN (HLLPJ53) (P) (PF)

CURREEKI PARK SHOWBOY 2 (NMPPB20) (P) (B) (PF)

THE HIRD PAULA SHOWGIRL (QHSPG17) (P) (B) (PF)

THE HIRD QHS PAULA (QHSPE1) (P) (B) (PF)

June 2019 Southern Limousin GROUP BREEDPLAN

	BWT	200	400	600	MLK	SS	DOC
EBV	+1.2	+23	+44	+59	+12	+0.8	+49
<i>Acc</i>	<i>64%</i>	<i>57%</i>	<i>56%</i>	<i>55%</i>	<i>39%</i>	<i>42%</i>	<i>50%</i>

Traits Observed: BWT,DOC

N22 is a reliable Mr Jock bull which means he will produce muscle and milk with an ability to cover.

Purchaser:..... Price:.....

Lot 14**WARRIGAL PRIME STAR P3***Vendor: Paul & Janelle Relf***Ident:** JPRPP3**DOB:** 08/02/2018**Grade:** Pure (94.16)**Black****Hetero Polled (by DNA test)**

FLEMINGTON BONANZA B6 (FPPB6) (P) (PF)

FLEMINGTON EXCEPTION E19 (FPPE19) (PN) (AA)

FLEMINGTON UNREAL (FPPU6) (PN)

Sire: WARRIGAL LEBRON L12 (JPRPL12) (P) (B) (PF)

WULFS NOBEL PRIZE 3861N (IMUPY3861) (HP) (B) (PN) (AA)

MANDAYEN POLLED WYNNE D1122 (MDNPD1122) (P) (B) (PF)

MANDAYEN POLLED WYNNE (MDNPW134) (P) (PN)

MANDAYEN ENERGIZER E1338 (MDNPE1338) (P) (R) (PN) (AA)

MANDAYEN ENERGISER H2076 (MDNPH2076) (HP*) (PF)

MANDAYEN KRYSTAL B724 (MDNPB724) (P) (PF)

Dam: WARRIGAL KRYSTAL L11 (JPRPL11) (P) (PF)

IONESCO (IMFFN206) (PN) (AA)

MANDAYEN KRYSTAL B727 (MDNPB727) (PF)

RAMORNIESPRY R020 (TWRPR20) (PF)

June 2019 Southern Limousin GROUP BREEDPLAN

	BWT	200	400	600	MLK	SS	DOC
EBV	+3.0	+22	+37	+50	+12	+1.0	+53
<i>Acc</i>	<i>63%</i>	<i>60%</i>	<i>61%</i>	<i>57%</i>	<i>38%</i>	<i>39%</i>	<i>49%</i>

Traits Observed: BWT,200WT,400WT,DOC

Prime Star has the combination of the powerful Krystal female line, and the sire LeBron to add softness and early finishing abilities. DOCILTY +53.

Purchaser:..... Price:.....

Lot 15 WARRIGAL NIGHT VISION N18

Vendor: Paul & Janelle Relf

Ident: JPRPN18 **DOB:** 16/12/2017 **Grade:** Pure (91.49)

Black **Homo. Polled (by DNA test)**

MANDAYEN VISION Y329 (MDNPY329) (HP) (B) (PN) (AA)
 MANDAYEN VISION C1054 (MDNPC1054) (HP*) (B) (PF) (AA)
 RAMORNIE AKELA W17 (SLTPW17) (P) (B) (PN)

Sire: WARRIGAL HIGH VISION (JPRPH19) (P) (PF) (AA)

WULFS NOBEL PRIZE 3861N (IMUPY3861) (HP) (B) (PN) (AA)
 MANDAYEN POLLED WYNNE D1122 (MDNPD1122) (P) (B) (PF)
 MANDAYEN POLLED WYNNE (MDNPW134) (P) (PN)

COLE WULF HUNT (IMUPB9207) (P) (HB*) (PN) (AA)
 MANDAYEN DURACELL D1098 (MDNPD1098) (P) (B) (PN) (AA)
 WULFS FUCHSIA 6215F (IMUPR6215) (P) (B) (PU)

Dam: MANDAYEN ROSEBUD J2480 (MDNPJ2480) (P) (B) (PF)

MANDAYEN VISION Y329 (MDNPY329) (HP) (B) (PN) (AA)
 MANDAYEN SPECIAL ROSEBUD E1462 (MDNPE1462) (P) (PF)
 MANDAYEN SPECIALS ROSEBUD (MDNPZ400) (P) (PF)

June 2019 Southern Limousin GROUP BREEDPLAN

	BWT	200	400	600	MLK	SS	DOC
EBV	+1.6	+23	+44	+64	+11	+0.6	+58
<i>Acc</i>	<i>61%</i>	<i>58%</i>	<i>61%</i>	<i>56%</i>	<i>43%</i>	<i>43%</i>	<i>54%</i>

Traits Observed: GL,BWT,200WT,400WT,600WT,DOC

Homo polled and black sired by Warrigal High Vision who has bred champions in Royal show rings as well as carcass champions. Low birth would suggest safe on heifers plus very docile +58.

Purchaser:..... Price:.....

Lot 16 WARRIGAL LIMFLEX

Vendor: Paul & Janelle Relf

Ident: JPR1P100 **DOB:** 18/03/2018 **Grade:** One (46.40)

Black **Polled**

FLEMINGTON BONANZA B6 (FPPB6) (P) (PF)
 FLEMINGTON EXCEPTION E19 (FPPE19) (PN) (AA)
 FLEMINGTON UNREAL (FPPU6) (PN)

Sire: WARRIGAL LEBRON L12 (JPRPL12) (P) (B) (PF)

WULFS NOBEL PRIZE 3861N (IMUPY3861) (HP) (B) (PN) (AA)
 MANDAYEN POLLED WYNNE D1122 (MDNPD1122) (P) (B) (PF)
 MANDAYEN POLLED WYNNE (MDNPW134) (P) (PN)

Dam: KNOWLA ANGUS COMMERCIAL AL6 (XAA0AL6) (HP) (B) (PF)

	BWT	200	400	600	MLK	SS	DOC
EBV							
<i>Acc</i>							

Traits Observed:

This is the first time we have offered a Limflex bull for sale, couldn't pass up this opportunity to offer such a thick set polled black bull, with the combination of a Knowla bred female and sired by Warrigal LeBron who keeps breeding soft easy doing calves.

Purchaser:..... Price:.....

Lot 17**HARLEES JOCKN34***Vendor: A Harries & J Lees***Ident:** HLLPN21**DOB:** 13/08/2017**Grade:** Pure (89.30)**Red****Polled**

LVLS POLLED JUSTICE 0601E (PEDPB9260) (PU)

HUNT MR JOCK 44J (IMUPU44) (P) (B) (PN) (AA)

HUNT MISS GIGGLE 129G (PEDPB9263) (PU)

Sire: HARLEES MR JOCK (HLLPG14) (P) (B) (PF)

WULFS NOBEL PRIZE 3861N (IMUPY3861) (HP) (B) (PN) (AA)

MANDAYEN CONNIE C857 (MDNPC857) (2P) (B) (PF)

CASTLEREAGH CONNIE R37 (APWPR37) (HP) (HB*) (PN)

WULFS RIDGLEY 3172R (IMUPA3172) (HP) (B) (PN) (AC)

FROGHOLLOW DUMBLEDORE D426 (MCFPD426) (2P) (B) (PN)

FROGHOLLOW POLL JEWEL Y121 (MCFPY121) (HP*) (HB*) (PF)

Dam: HARLEES SILVER (HLLPH34) (P) (B) (PF)

DEVT POLLED DEON (IMUPQ95) (P) (B) (PN) (AA)

PREMIER GOLDIE D73 (PREPD73) (P) (B) (PF)

PREMIER GOLDIE A61 (PREPA61) (P) (B) (PF)

June 2019 Southern Limousin GROUP BREEDPLAN

	BWT	200	400	600	MLK	SS	DOC
EBV	+2.3	+28	+48	+70	+12	+0.8	+48
<i>Acc</i>	65%	58%	56%	56%	41%	43%	51%

Traits Observed: BWT,DOC

Out of one of our largest framed cows. He has shown good growth and will develop into one of the largest framed bulls in the Harlees draft.

Purchaser:..... Price:.....

Lot 18**HARLEES ZESTN42***Vendor: A Harries & J Lees***Ident:** HLLPN42**DOB:** 28/09/2017**Grade:** Pure (90.03)**Apricot****Polled**

HSF UNDERTAKER (PEDPD86) (P) (B) (PU)

WULFS X-AGGERATE J657X (PEDPF411) (HP*) (B) (PU)

WULFS STEPPING STONE 6507 (PEDPB569) (P) (B) (PU)

Sire: LFLC ZEST 51Z (IMUPH51) (HP*) (PN) (AA)

JCL LODESTAR 27L (PEDPW9275) (HP*) (B) (PU) (AC)

PLND REBA 521R (PEDPA175) (P) (B) (PU)

PLND GRETA 144G (PEDPS566) (P) (R) (PU)

HUNT MR JOCK 44J (IMUPU44) (P) (B) (PN) (AA)

MANDAYEN EASY RIDER E1360 (MDNPE1360) (P) (B) (PF)

MANDAYEN WINIFRED (MDNPW140) (R) (PF)

Dam: HARLEES BLACK JILL13 (HLLPJ13) (B) (PF)

WULFS GUARDIAN 5074G (IMUPS5074) (P) (B) (PN) (AA)

RAMORNIE JILL Z25 (SLTPZ25) (B) (PF) (AA)

RAMORNIE JILL T10 (SLTPT10) (P) (PF)

June 2019 Southern Limousin GROUP BREEDPLAN

	BWT	200	400	600	MLK	SS	DOC
EBV	+0.8	+21	+39	+50	+12	+1.2	+57
<i>Acc</i>	68%	61%	59%	60%	33%	46%	55%

Traits Observed: GL,CE,BWT,DOC

A solid Zest bull out of a reliable Jill cow. Muscle and milk will be produced from this bull. Breed vealer or grown steers and replacement heifers.

Purchaser:..... Price:.....

Lot 19**HARLEES YUKONN35***Vendor: A Harries & J Lees***Ident:** HLLPN35**DOB:** 27/09/2017**Grade:** Pure (90.39)**Black****Polled**

WULFS RANSOM 3059R (IMUPA3059) (HP*) (PU) (AA)
 WULFS TRAILBLAZER 2329T (PEDPC961) (P) (PU)
 WULFS MOTHEROFPEARL 2329M (PEDPX168) (P) (PU)

Sire: ANCHOR B YUKON 30Y (IMCPG30) (HP*) (PN) (AA)

ROMN MADE TO ORDER (IMUPE9608) (P) (PN)
 ANCHOR B PHOEBE (PEDPZ928) (P) (PU)
 ANCHOR B POLL KARI 4K (PEDPV4422) (P) (PU)

RUNL STETSON 850S (IMUPB850) (2P) (HB) (PN) (AA)
 RUNL XTRA-LOYAL 644 X (IMUPF141) (HP*) (HB*) (PN)
 RUNL 294S (PEDPB1971) (P) (B) (PU)

Dam: HARLEES LOYAL (HLLPJ4) (P) (B) (PF)

MANDAYEN XCEED A530 (MDNPA530) (P) (B) (PF)
 MANDAYEN KRYSTAL G1846 (MDNPG1846) (P) (B) (PF)
 RAMORNIESPRY R020 (TWRPR20) (PF)

June 2019 Southern Limousin GROUP BREEDPLAN

	BWT	200	400	600	MLK	SS	DOC
EBV	-0.3	+18	+28	+35	+12	+1.2	+44
<i>Acc</i>	62%	53%	51%	52%	30%	36%	47%

Traits Observed: GL,CE,BWT,DOC

A powerfull nugget of a bull. Only a moderate frame but also the low birthweight to improve calving ease. The only Anchor B Yukon bull in the sale that has a different genetic twist.

Purchaser:..... Price:.....

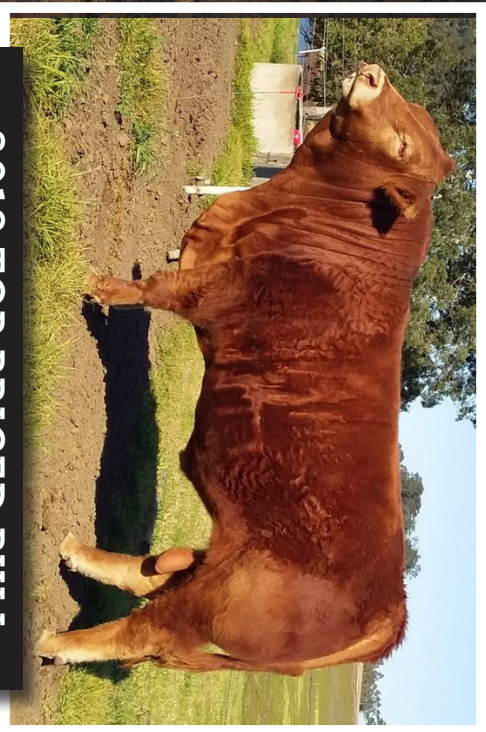


LOT 17 HARLEES JOCK N34



LOT 19

HARLEES YUKON N35



2018 TOP PRICED BULL
LOT 2
WARRIGAL NEXT G

FLL

AuctionsPlus



HARLEES LIMOUSINS

WARRIGAL LIMOUSINS

Sale Location at Harlees Limousins

