



2019

**BIMBADEEN
BRANGUS**

Bull & Female Sale

**40 REGISTERED BULLS
50 PUREBRED HEIFERS**

Welcome

Welcome to the 2019 Bimbadeen Brangus Bull and Female Sale – our third annual on-property single-vendor event. We have a lot of 'firsts' this year, including:

- A record 90 animals for sale – 40 bulls and 50 heifers
- All 40 bulls are registered with the ABCA
- All bulls have been morphology tested
- All bulls have been gene tested (for poll, coat colour and tenderness)
- All bulls are between 20-22 months of age
- First time we have offered females at our annual sale
- All heifers are between 8-10 months of age
- For the first time, all lots will also be offered online, via AuctionsPlus.

Once again, we will be holding a Live Auction (for the first 12 bulls) to be immediately followed by a Helmsman Auction. (You will see each individual page identifies which auction that lot will be sold in.)

The 40 exciting young bulls on offer are a terrifically even draft, with the top 12 selected on across-the-board results for EBVs, fertility, genotype and phenotype. With additional testing done for this year's bulls, we have much more information for buyers in this catalogue. Overall statistics are impressive: 85% of bulls have the double poll* gene, 85% the double black* coat gene, and 22 bulls scoring 6 or higher in their tenderness gene results. (*homozygous)

Our reference sires for lots 1-40 (see pages 10-12) include 11 great bulls - Oaklands Ambassador (10 lots, with 5 in live auction), Telpara Hills Mundine (8 lots), Telpara Hills Jackman (5 lots), Bimbadeen Q Kosciuszko, Bimbadeen Q Litchfield (3) and Al bulls Washington of Brinks (3), Greendale Quickmove (2), Greendale Oscar (2) and Catawba Warrior R532. Bimbadeen Q F1 and Doonside Franchise are our red Brangus sires. Our cows, as always, are the incredible, deep foundation on which we breed cattle for all Australian conditions – with almost seven decades of Brangus breeding, and constant fertility pressure, behind them.

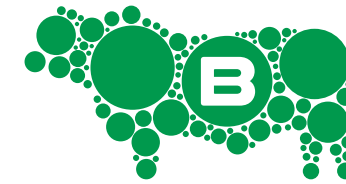
The heifers (lots 41-50) will be sold as five head per lot – they have been sourced from different breeder paddocks to our bulls and can therefore be joined with them should you wish to add them to your truckload. They are pure Brangus and could be enrolled should the buyer wish.

Here at Bimbadeen, we will always strive for excellence in key beef breeding functions: fertility, soundness, beef quality and production. We are proud to produce quality lines of functional, productive seedstock to thrive in vastly varying Australian conditions.

Thank you for your support and we look forward to seeing you at 'Bimbadeen', at our 'Arthur's Knob' main yards sale venue, on August 24.

Cheers

Mark & Amanda Salisbury 



2019

BIMBADEEN BRANGUS

Bull & Female Sale

SATURDAY, 24TH AUGUST

9AM - NOON

SALE COMMENCING 10.30AM

ON-PROPERTY AT 'ARTHUR'S KNOB'



90 RED & BLACK POLLED BRANGUS

40 BULLS & 50 HEIFERS

LOTS 1 - 12 LIVE AUCTION BULLS ★ **LOTS 13 - 40 HELMSMAN BULLS**
LOTS 41 - 50 HEIFERS via HELMSMAN



AuctionsPlus
Buy and Sell stock nationally



MONTO

Brad McNally 0428 780 414

ROCKHAMPTON

Brian Wedemeyer 0409 694 696
Robert Murray 0419 644 813
Sara Graffunder 0455 971 372

Amanda & Mark Salisbury

'Upson Downs', MS 85
Eidsvold Qld 4627

p 07 4167 5141 m 0427 141 919
e bimbadeen@skymesh.com.au



BIMBADEENBRANGUS.COM



Buyer Information

40 BRANGUS BULLS

- 12 LIVE AUCTION LOTS
- 28 HELMSMAN

50 BRANGUS HEIFERS

- IN 10 HELMSMAN LOTS

On-property at 'Arthur's Knob' main yards, Bimbadeen Brangus, Eidsvold/Monto, QLD.

Gates Open 9am

Live Auction commences 10.30am
followed by Helmsman Auction

Smoko and lunch will be available.
Prior inspections by appointment.

Mark Salisbury

P. 07 4167 5141 M. 0427 141 919
E. bimbadeen@skymesh.com.au
W. www.bimbadeenbrangus.com
F. facebook.com/Bimbadeen

BULL PREPARATION

All bulls have been run on native grasses and supplemented with a silage and barley mix (recommended by a nutritionist from Riverina Stockfeeds).

HEALTH

All lots are visually vet* inspected, and have been treated twice with 5-in-1 and vaccinated at weaning for tick fever. Other vaccinations will be up to the purchaser.

FERTILITY

Dr Stacey Rae* (Monto Veterinary Services) has crush-side tested, done scrotal measures and taken morphology samples from all bulls.

SUPPLEMENTARY SHEETS

Will be available on sale day, and will include genetic test results, current weights and scan data (EMA, rib and rump fat and marbling).

Pedigrees and accompanying animal information in this catalogue are represented to the best of the the vendors' knowledge at the time of publication. The Vendors, Agents and Australian Brangus Cattle Association bear no responsibility for errors or accidental misrepresentation. Where sires have been genetically verified, it will be indicated with (SV) on supplementary sheets provided on sale day.

MOVEMENT OF BULLS

- Cattle will be clean on sale day ready for immediate transport (with an inspector available on the day).
- We are a J-BAS 7 herd (WA eligible).

INSURANCE

From the fall of the hammer
(by arrangement with agent on day).

GOT A QUESTION?

The Bimbadeen Team is available via phone (see page 1 for contact details) or Facebook messenger (facebook.com/Bimbadeen).

OUTSIDE AGENTS REBATE

A rebate of 2% commission will be paid to any agent:

- Accompanying a client to the sale; or
- Attends the sale and purchases on a client's behalf
- Settling within 7 days

SALE DAY PHONE

There is mobile phone coverage at the sale location.

SETTLING YOUR NEW BULL

Your new sire will be leaving a familiar environment and mob, and will arrive to strange situation at your property. The truck ride can sometimes be challenging for a young animal, especially if he is travelling on his own. If you are not putting him directly into a cow herd, it's a great technique to ensure he has company - a cow or a steer waiting for him. We treat our bulls with great respect and make a habit of handling them quietly - we recommend you do the same. Each bull has their own personality and flight zone, but care has been taken in Bimbadeen's selection to ensure there are no general temperament issues.

BEEF BREEDING SERVICES

Australia's most trusted
artificial breeding
organisation since 1962

- Semen Collection & Processing for Export & Australian Market
- Semen and Embryo Storage & Dispatch
- Liquid Nitrogen Supplier
- Semen Export & Import Services
- Semen Marketing
- AI Programs, Training & Products

ROCKHAMPTON
07 4936 4110

ETNA CREEK
07 4934 2435

BRISBANE
07 3271 3297

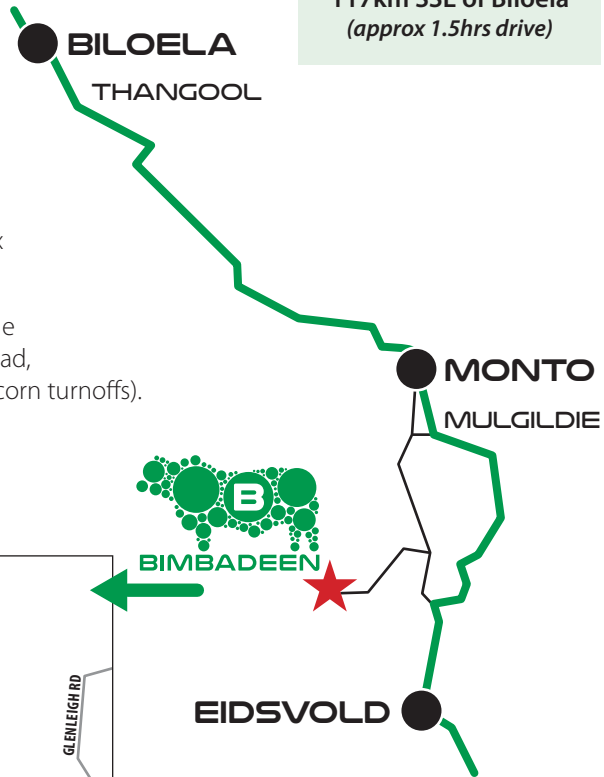


beefbreeding.com.au

Directions

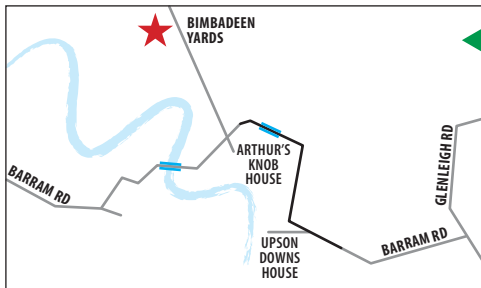
'ARTHUR'S KNOB' MAIN YARDS LOCATED

50km SW of Monto
59km NW of Eidsvold
117km SSE of Biloela
(approx 1.5hrs drive)



The sale is on Mt Margaret Road, 5km north of the property mailbox at 1811 Barram Road.

We will signpost directions from the Burnett Highway (Old Rawbelle Road, Mulgildie and Wuruma Dam/Abercorn turnoffs).



ACCOMMODATION

If you require accommodation we recommend that you book early.

From the North

Silo Motor Inn
Hotel Settlers
Sun Valley Motel

Central

Colonial Motor Inn
Three Moon Hotel
Caravan Park

BILOELA

07 4992 5555
07 4992 2933
07 4992 1281

MONTO

07 4166 1377
07 4166 1777
07 4166 1492

From the South

On the Corner Motel
Star Hotel

Billabong Motor Inn

FLIGHTS

Thangool - 'Fly Corporate' 1300 851 269

EIDSVOLD

07 41651207
07 4165 1109

MUNDUBBERA

07 4165 4533

RIVERINA

STOCKFEEDS

PROVEN PERFORMANCE FEED FOR SALE AND SHOW STOCK

- ✓ Extensive Bulk/Bagged Range
- ✓ Palleted & Dry Custom Feeds
- ✓ Quality Assured Products
- ✓ Competitive Pricing
- ✓ Professional Service
- ✓ Nutritional Advice



www.riverina.com.au

EBVs Explained

GL - Gestation Length (days) is an estimate of the time from conception to the birth of the calf and is based on AI records. Lower (negative) GL EBVs indicate shorter gestation length and therefore easier calving and increased growth after birth.

BW - Birth Weight EBV (kg) is based on the measured birth weight of progeny, adjusted for dam age. The lower the value the lighter the calf at birth and the lower the likelihood of a difficult birth. This is particularly important when selecting sires for use over heifers.

200D - 200 Day Growth EBV (kg) is calculated from the weight of progeny taken between 80 and 300 days of age. Values are adjusted to 200 days and for age of dam. This EBV is the best single estimate of an animal's genetic merit for growth to early ages.

400D - 400 Day Weight EBV (kg) is calculated from the weight of progeny taken between 301 and 500 days of age, adjusted to 400 days and for age of dam. This EBV is the best single estimate of an animal's genetic merit for yearling weight.

600 - 600 Day Weight EBV (kg) is calculated from the weight of progeny taken between 501 and 900 days of age, adjusted to 600 days and for age of dam. This EBV is the best single estimate of an animal's genetic merit for growth beyond yearling age.

MCWT - Mature Cow Weight EBV (kg) is based on the cow weight when the calf is weighed for weaning, adjusted to 5 years of age. This EBV is an estimate of the genetic difference in cow weight at 5 years of age and is an indicator of growth at

later ages and potential feed maintenance requirements of the females in the breeding herd. Smaller, or more moderate EBVs are generally more favourable.

The Mature Cow Weight EBV may also be used by steer breeders wishing to grow animals out to a larger weight.

MILK - Milk EBV (kg) is an estimate of an animal's milking ability. For sires, this EBV indicates the effect of the daughter's milking ability, inherited from the sire, on the 200 and 400 day weights of her calves. For dams, it indicates her own milking ability.

SS - Scrotal Size EBV (cm) is calculated from the circumference of the scrotum, measured in centimetres and adjusted to 400 days of age. This EBV is an estimate of a sire's genetic merit for scrotal size and is positively correlated to age of puberty in female progeny.

Days to Calving (days) This EBV indicates the fertility of the daughters of the sire. It is the time interval between the date when the female is first exposed to a bull in a paddock mating to the day when she subsequently calves. A negative EBV for days to calving indicates a shorter interval from bull-in date to calving and therefore higher fertility.

CWT - Carcase Weight EBV (kg) is based on abattoir carcase records and is an indicator of the genetic differences in carcase weight at the standard age of 650 days.

Eye Muscle Area EBV (sq cm) is calculated from measurements from live animal ultrasound scans and from abattoir carcase data, adjusted to a standard 300 kg carcase.

This EBV estimates genetic differences in eye muscle area at the 12/13th rib site of a 300 kg dressed carcase. More positive EBVs indicate better muscling on animals. Sires with relatively higher EMA EBVs are expected to produce better muscled and higher percentage yielding progeny at the same carcase weight than will sires with lower EMA EBVs.

Rib Fat and Rump Fat EBVs (mm) are calculated from measurements of subcutaneous fat depth at the 12/13 rib site and the P8 rump site (from live animal ultrasound scans and from abattoir carcasses) and are adjusted to a standard 300 kg carcase. These EBVs are indicators of the genetic differences in fat distribution on a

standard 300 kg carcase. Sires with low, or negative, fat EBVs are expected to produce leaner progeny at any particular carcase weight than will sires with higher EBVs.

Retail Beef Yield EBV (%) indicates genetic differences between animals for retail yield percentage in a standard 300 kg carcase. Sires with larger EBVs are expected to produce progeny with higher yielding carcasses.

Intramuscular Fat EBV (%) is an estimate of the genetic difference in the percentage of intra-muscular fat at the 12/13th rib site in a 300kg carcase. Depending on market targets, larger more positive values are generally more favourable.

Breed Values

BRANGUS BREEDPLAN - PERCENTILE BANDS FOR 2017 BORN CALVES

	BIRTH		GROWTH					FERTILITY	CARCASE					INDEXES		
	Gest. Length (days)	Birth Wt. (kg)	200 Day Wt. (kg)	400 Day Wt. (kg)	600 Day Wt. (kg)	Mat Cow Wt. (kg)	Milk (kg)	Scrotal Size (cm)	Carcase Wt. (kg)	EMA (sq cm)	Rib Fat (mm)	Rump Fat (mm)	Retail Beef Yield (%)	IMF (%)	Export (\$)	Domestic (\$)
Top Value	-4.9	-4.7	+35	+66	+72	+86	+6	+2.9	+36	+4.7	+4.5	+5.6	+1.9	+1.4	+51	+53
Top 1%	-3.0	-2.7	+28	+51	+58	+57	+3	+2.5	+28	+3.1	+2.1	+2.5	+1.6	+0.8	+42	+44
Top 5%	-2.2	-1.8	+24	+43	+48	+46	+2	+1.8	+24	+2.4	+1.4	+1.7	+1.1	+0.6	+37	+38
Top 10%	-1.8	-1.5	+21	+38	+43	+40	+1	+1.5	+22	+2.1	+1.1	+1.3	+0.9	+0.5	+33	+34
Top 15%	-1.5	-1.2	+19	+35	+39	+36	+1	+1.3	+20	+1.8	+0.9	+1.0	+0.8	+0.4	+30	+32
Top 20%	-1.4	-1.1	+18	+31	+35	+32	+0	+1.2	+18	+1.7	+0.7	+0.9	+0.7	+0.4	+28	+30
Top 25%	-1.2	-1.0	+16	+29	+32	+29	+0	+1.1	+17	+1.5	+0.6	+0.7	+0.6	+0.4	+26	+28
Top 30%	-1.1	-0.8	+15	+27	+30	+26	+0	+1.0	+16	+1.4	+0.6	+0.6	+0.5	+0.3	+24	+26
Top 35%	-0.9	-0.7	+14	+25	+28	+23	-1	+0.8	+15	+1.3	+0.5	+0.5	+0.4	+0.3	+23	+25
Top 40%	-0.8	-0.5	+13	+23	+26	+21	-1	+0.7	+14	+1.2	+0.4	+0.5	+0.3	+0.3	+21	+23
Top 45%	-0.7	-0.4	+12	+22	+24	+19	-1	+0.6	+13	+1.1	+0.3	+0.4	+0.3	+0.3	+20	+22
Top 50%	-0.7	-0.2	+11	+20	+21	+17	-1	+0.5	+12	+1.0	+0.3	+0.3	+0.2	+0.2	+19	+20
Top 55%	-0.6	-0.1	+10	+18	+19	+15	-2	+0.4	+11	+0.9	+0.2	+0.2	+0.2	+0.2	+17	+19
Top 60%	-0.5	+0.1	+9	+17	+18	+13	-2	+0.3	+10	+0.8	+0.1	+0.1	+0.1	+0.2	+16	+17
Top 65%	-0.4	+0.3	+8	+15	+16	+12	-2	+0.2	+9	+0.8	+0.1	+0.0	+0.1	+0.2	+14	+16
Top 70%	-0.4	+0.4	+7	+14	+14	+10	-2	+0.1	+8	+0.7	+0.0	-0.1	+0.0	+0.1	+13	+15
Top 75%	-0.3	+0.7	+6	+12	+12	+8	-2	+0.1	+7	+0.6	-0.2	-0.3	+0.0	+0.1	+12	+14
Top 80%	-0.2	+0.9	+5	+11	+11	+6	-3	+0.0	+7	+0.5	-0.3	-0.4	-0.1	+0.0	+11	+13
Top 85%	-0.1	+1.1	+4	+9	+9	+4	-3	-0.1	+6	+0.4	-0.4	-0.6	-0.1	+0.0	+10	+12
Top 90%	+0.0	+1.4	+3	+8	+7	+1	-4	-0.2	+5	+0.2	-0.7	-0.9	-0.2	-0.1	+8	+10
Top 95%	+0.2	+1.9	+2	+4	+3	-2	-5	-0.4	+3	-0.1	-1.0	-1.4	-0.4	-0.2	+5	+8
Top 99%	+0.7	+2.8	-2	+0	-2	-10	-6	-1.1	+0	-0.8	-1.7	-2.2	-1.0	-0.5	+2	+4
Low Value	+1.7	+3.9	-10	-10	-15	-23	-8	-2.2	-7	-1.9	-2.2	-2.8	-2.4	-0.9	-12	-9

Genetic Tests

All Bimbadeen sale bulls have had Neogen's 'Brangus bundle' genetic testing done for the 2019 sale - this involves testing samples for the poll gene, coat colour gene, and the tenderness gene.

COAT

ED Homozygous dominant black
 ED/e Dominant black/recessive red
 ED/ E+ Dominant black/wildtype
 E+/e Wildtype/recessive red
 E+/ E+ Homozygous wildtype
 e/e Homozygous recessive red

TENDERNESS

Increase in "tenderness" is associated with favourable alleles seen within the selected marker panel. In this report, the combined genotype results have been scored between 1 to 10, where 10 has the most favourable number of alleles present.

POLL

When reporting Poll test results from a SNP based test, the results will be reported as seen below:

Result	Interpretation	Animal's Appearance
PcPc	Homozygous Poll (PP)	Predominately Polled (occasional scurs)
PcPf		
PfPf		
HPc	Heterozygous Poll (PH)	Polled or Scurred
HPf		
HH	Horned (HH)	Horned

Mating outcomes (statistically):

Pc and Pf are interchangeable for 'P' in the graphic below.

	P	P	
P	PP	PP	PP x PP 100% progeny will be PP polled
P	PP	PP	
P	PP	PP	

	P	P	
H	PH	PH	PP x HH 100% progeny will be PH polled
H	PH	PH	
H	PH	PH	

	P	P	
P	PP	PP	PP x PH 50% progeny will be PP polled, 50% will be PH polled
H	PH	PH	
H	PH	PH	

	P	H	
P	PP	PH	PH x PH 50% progeny will be PH polled, 25% will be PP polled, 25% will be HH horned
H	PH	HH	
H	PH	HH	

	P	H	
H	PH	HH	PH x HH 50% progeny will be PH polled, 50% will be HH horned
H	PH	HH	
H	PH	HH	

	H	H	
H	HH	HH	HH x HH 100% progeny will be HH horned
H	HH	HH	
H	HH	HH	

AuctionsPlus
Australia's Livestock Marketplace

Contact AuctionsPlus on (02) 9262 4222 or email studsales@auctionsplus.com.au or www.auctionsplus.com.au

Check us out on: [f](#) [i](#) [t](#) [in](#)

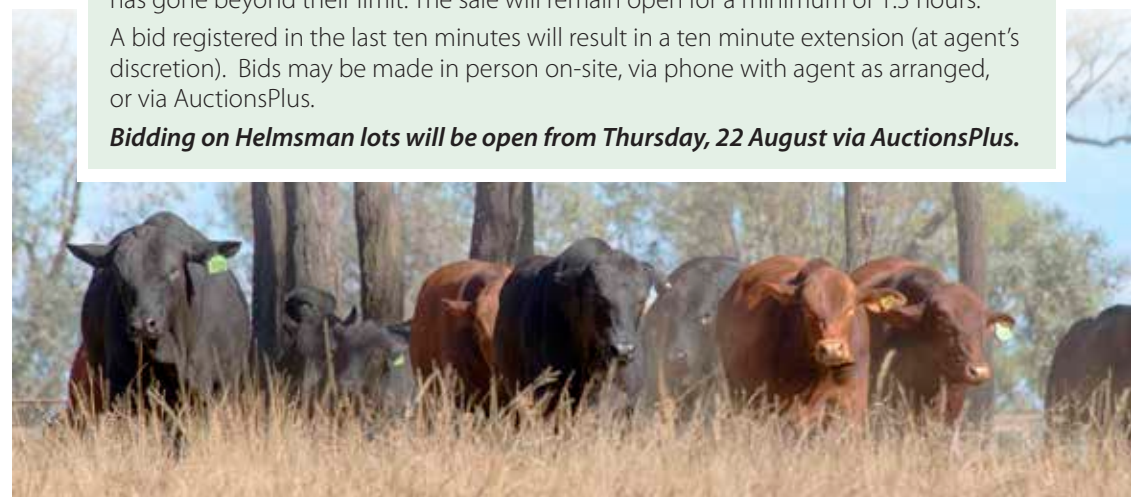
Can't make the sale?
 Purchase online in eight simple steps!
 Log on to AuctionsPlus and bid on your phone, tablet or computer.

- 1 REGISTER ONLINE**
Free once off registration for all auctions.
- 2 COMPLETE BUYER INDUCTION**
The buyer induction will help you understand the roles and responsibilities of everyone on the AuctionsPlus system.
- 3 VIEW CATALOGUE**
View photos, videos, pedigrees and more.
- 4 ENTER AUCTION**
Log into the auction anytime, anywhere and bid on your mobile, tablet or computer.
- 5 AUTO BID**
Can't stay for the whole sale? Set your maximum bid on the lot that you want to purchase and let the computer bid for you.
- 6 CONTACT SELLING AGENT**
If successful, contact selling agent to arrange payment and delivery. The agent contact details will be in the catalogue header.
- 7 PAYMENT**
Via the selling agent's terms and conditions.
- 8 DELIVERY**
Arrange transport of livestock at your expense.

Helmsman Auction Explained (LOTS 13 - 50)

All lots are open for bidding at one time. Buyers may place bids of their choice on any lot (irrespective of order) and may bid on more than one lot at a time. A board will show current bids on all lots, so you can see if your offer has been overbid. The system is flexible and provides purchasers time to consider another lot, if a bid has gone beyond their limit. The sale will remain open for a minimum of 1.5 hours. A bid registered in the last ten minutes will result in a ten minute extension (at agent's discretion). Bids may be made in person on-site, via phone with agent as arranged, or via AuctionsPlus.

Bidding on Helmsman lots will be open from Thursday, 22 August via AuctionsPlus.



Reference Sires



**OAKLANDS
AMBASSADOR (P)(AI)(ET)**
NMH11R392G3

Selected for his outstanding poll, underline and structure - Ambassador infuses Bimbadeen progeny with the best of Brinks breeding with excellent EBVs.

Sire of 10 lots in sale - Lot 4 (Pacino), 5 (Panama), 7 (Prophet), 8 (President) and 11 (Pasteur) in Live Auction, and 16 (Poseidon), 19 (Pioneer), 24 (Plutus), 25 (Pitch), 30 (Predict) in Helmsman.



**TELPARA HILLS
MUNDINE 820J2**
(P)(AI) TEL13R820J2

Mundine is a very even Brangus type who offers excellent EBVs.

Sire of lot 6 (Prince) in live auction, and lots 14 (Pele), 18 (Paygrade), 20 (Picus), 27 (Playmate), 31 (Proof), 32 (Poker).



**DOONSIDE
FRANCHISE 1938 (P)(AI)**
30112R1938

Franchise is a strong, deep, polled red bull with plenty of growth and sought-after red Brangus genetics (including CX Home Run 135/P and Duarran Fantastic).

Sire of lot 12 (Poland) in live auction and lots 37 (Poe), 39 (Propose), 40 (Prosper).



**TELPARA HILLS
JACKMAN 541H17**
(P)(AI)(ET) TEL12R541H17

Jackman offers strong Brinks and Suhn's genetics, selected for style, bone, poll and growth-for-age attributes.

Sire of lot 2 (Pascoe) in live auction, and lot 17 (Panther), lot 22 (Picasso), lot 23 (Principle), 28 (Peppard) and 29 (Pepper).



**BIMBADEEN Q
KOSCIUSZKO (P)**
BIM13RK2

A home-grown bull who has grown into a strong sire - with a big frame, Aussie-style polled head and skin and outstanding temperament.

His pedigree goes back to Czonka of Brinks on his sire's side and his dam (G173) has a double dose of Greendale.

Sire of lot 10 (Pinnacle) in live auction.



**BIMBADEEN Q
LITCHFIELD L12 (P)(AI)(ET)**
BIM14RL12

An embryo bull by Singletary of Brinks 375R raised at Bimbadeen, is a super-strong well-fleshed bull with a great nature.

Litchfield is sire of lots 3 (Preacher) and 9 (Presley) in the Live Auction, and lot 35 (Pasadena).

(Photo current in paddock condition)

BIMBADEEN Q F1 (P)(AI)(ET)
BIM09EF1

Our first red embryo calf. A huge framed bull by Huonfels Jacob Rio (Red Brahman) out of Waterfront X159 (Red Angus).

Sire of Lots 36 (Peacock) and 38 (Planet).



AI Reference Sires



**WASHINGTON
BRINKS 302547**
(P)(AI)(ET) IMU06R302547

The \$60,000 proven US sire.
This bull sits in the top 10% EBVs for weight, top 5% carcase and EMA and is also the sire of our very successful (dec) embryo investment, Bimbadeen Hank (H1).
Sire of Lot 1 (Bimbadeen Phoenix) in Live Auction and lots 16 (Power) and 21 (Prime Time).



**TCP CATAWBA
WARRIOR R532** (P)(AI)
IMU05RR532

Renown for his 'curve bending' trait combinations - in birth weight, yearling weight, milk, scrotal and EMA.
Sire of Lot 34 (Paladin).



**GREENDALE
QUICK MOVE** (P)
GRE97R1199

Sire of lots 13 (Peter Pan) & 33 (Plunder).

GREENDALE OSCAR
(P)(AI)(ET) GRE95F731

Sire of lot 26 (Parade).
Greendale Brangus is long-considered one of Australian Brangus' most influential studs.



**WITH YOU
EVERY
STEP OF
THE WAY.**

Working with Stud Stock producers, sharing industry knowledge and providing tailored advice on stud stock performance and management, we also offer you expert auctioneers. Offering national and global marketing options, our Stud Stock team can help you achieve more.

Contact your local representative today.

Michael Smith
0428 541 711

Lisa Hedges
0427 891 367

Blake Munro
0428 862 469

Robert Murray
0419 644 813

Brian Wedemeyer
0409 694 696

Randall Spann
0429 700 332

Andrew Meara
0427 210 634



ARE YOU FINANCIALLY CONFIDENT?

We work with you to get organised and stay in control of your finances



WWW.LONSDALEAGRIBUSINESS.COM.AU



FARMstuff

MONTO



For the right stuff!

- FARMING** On farm agronomy advice from Kendall Muller
- Agronomist • Fertilisers • Seed
 - Chemicals • Pasture Advice • Soil Tests
- LIVESTOCK**
- NLIS Tags • Vaccines
 - Animal Health Products for Internal & External Parasites
 - Supplements • Blocks • Loose Licks
- FENCING**
- Standard & Electric
 - Wire • Posts • Energisers
- GENERAL** Produce & Animal Health Lines for:
- Horses • Pigs • Birds • Cattle • Dogs & Cats
 - Rainwater Tanks • Poly & Concrete Troughs
 - Woody Weed Control & Advice • Rodenticides
 - Baling Twine • Boots • Castrol Oils • Crushes
 - HANS Products • Cavalier Products

FOR ALL YOUR RURAL NEEDS, CONTACT US!

4166 1466

11 Lister Street, Monto Qld 4630

Kendall Muller, Manager/Agronomist 0437 529 287

www.farmstuff.net.au

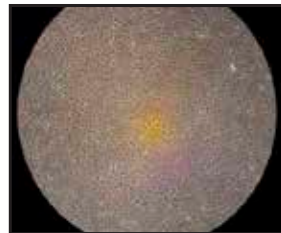
Denise, Simon, Shane & Michelle





Monto Veterinary Services

Our vets are BULLCHECK accredited with the Australian Cattle Vets Association and can undertake all your bull testing requirements for stud, sale and paddock bulls.



BULLCHECK ACCREDITED | ON FARM SERVICES | CUSTOM SEMEN COLLECTION | FIXED TIME AI SERVICES | PREGCHECK ACCREDITED

Contact Phone: (07) 4166 1285

Email: admin@montovetsurgery.com.au

Address: 8 Lister Street, MONTO QLD 4630

We're open 5 days a week, plus our after hours service provides you 24/7 assistance in emergencies

CONTACT US
We Provide professional and affordable health care for pets and livestock



Bimbadeen Q
PHOENIX (AI)

- CADENCE OF BRINKS (P)
- LEAD GUN OF BRINKS 222K14 (P)**
- MISS BB NEW BIG EASY 222E55 (P)
- S WASHINGTON OF BRINKS 302S47 (P)**
- BRIGHT SIDE OF BRINKS 789G5 (P)
- MS BRINKS BRIGHT SIDE 302L9 (P)**
- MISS BRINKS GERONIMO 302H6 (P)
- BONOX 368 (P)
- BONOX 505 (P)**
- BONOX B211 (P)
- D BIMBADEEN Q L91 (P)**
- DOONSIDE DR MOK (S)
- BIMBADEEN Q G159 (P)**
- BIMBADEEN Q Q007 (P)

Fertile & Fabulous: 90% morph, top 5% ss, top 30% 400dw & carcase wt, homozygous poll gene, 3 gens

PURCHASER:

\$

LIVE AUCTION

1

★ REGISTERED ★

Ident: **BIM17RP0129**
DOB: **27/11/2017**
% BI: **41%**
GENS: **3**

GL	-0.2	34%
BW	0.4	49%
200D	14	59%
400D	27	60%
600D	29	53%
MCWT	24	41%
MILK	-1	38%
SS	1.8	68%
CWT	17	48%

DATE Wean	WEIGHT 278kg
400D	499kg
SCROTAL	MORPH 91%
37cm	

H/POLL Pc/Pc	COLOUR ED/e
-----------------	------------------------------



Bimbadeen Q
PASCOE (P)

SUHN'S AFFIRMED 416N4 (P)
CB HOMBRE 541T3 (P)
MS BRINKS BRIGHT SIDE 541K28 (S)

- S **TELPARA HILLS JACKMAN 541H17 (P)(AI)(ET)**
SINGLETARY OF BRINKS 675R (P)
TELPARA HILLS MISS SINGLETARY 541E (P)(ET)
MS BRINKS SUNDANCE 541M43 (P)

BRANGUS BULL (P)

- D **BIMBADEEN Q R352 (P)**

BRANGUS COW (P)

Long & Strong: Top 30% 400dw, homozygous poll and black coat genes, tenderness 7, morph 86%

PURCHASER: \$
18

LIVE AUCTION

2

★ REGISTERED ★

Ident: **BIM17FP228**
DOB: **04/11/2017**
% BI: **44%**
GENS: **F**

ESTIMATED BREEDING VALUES	
GL	-0.2 25%
BW	-0.1 41%
200D	13 55%
400D	27 59%
600D	22 52%
MCWT	9 39%
MILK	-5 35%
SS	-0.5 69%
CWT	15 46%

VET WEIGHTS	
DATE Wean	WEIGHT 392kg
400D	520kg
SCROTAL 35cm	MORPH 86%
H/POLL Pc/Pc	COLOUR ED/ED



Bimbadeen Q
PREACHER (P)

LEAD GUN OF BRINKS 222K14 (P)
SINGLETARY OF BRINKS 675R (P)
MS BRINKS UPPERCUT 209N11 (P)

- S **BIMBADEEN Q LITCHFIELD L12 (P)(AI)(ET)**
SUNDANCE OF BRINKS 392G9 (P)
TELPARA HILLS MISS SUNDANCE 541D6 (P)(ET)
MISS BRINKS KO 541L41 (P)(ET)

BRIGHT SIDE OF BRINKS 789G5 (P)
BRINKS BRIGHT SIDE 607 L11 ET (P)
MISS BRINKS BIG EASY 607H10 (S)

- D **BIMBADEEN Q L1 (P)(AI)(ET)**
B/R NEW FRONTIER 095 USA095 (S)
TELPARA HILLS NEW FRONTIER EMPRESS EMPC2 (P)(AI)(ET)
BRAHROCK WEST EMPRESS 3064 (P)

Across the Board: Top 10% milk, SS & EMA, top 15% 600dw & CWT, homozygous poll & colour, scrotal 43cm, morph 94% & tenderness 9

PURCHASER: \$
19

LIVE AUCTION

3

★ REGISTERED ★

Ident: **BIM17RP134**
DOB: **16/10/2017**
% BI: **41%**
GENS: **1**

ESTIMATED BREEDING VALUES	
GL	-0.9 47%
BW	1.3 59%
200D	17 59%
400D	33 53%
600D	41 42%
MCWT	36 37%
MILK	1 68%
SS	2.2 47%
CWT	21 47%

VET WEIGHTS	
DATE Wean	WEIGHT 377kg
400D	578kg
SCROTAL 43cm	MORPH 94%
H/POLL Pc/Pc	COLOUR ED/ED



Bimbadeen Q
PACINO (P)

LIVE AUCTION
4

★ REGISTERED ★

Ident: **BIM17RP35**
DOB: **10/11/2017**
% BI: **45%**
GENS: **2**

GL	-0.8	28%
BW	2	46%
200D	22	62%
400D	35	60%
600D	40	54%
MCWT	35	41%
MILK	1	36%
SS	2.2	69%
CWT	20	48%

DATE	WEIGHT
Wean	302kg
400D	546kg

SCROTAL	MORPH
40cm	87%

H/POLL	COLOUR
Pc/Pc	ED/ED

ESTIMATED BREEDING VALUES

- LEAD GUN OF BRINKS 222K14 (P)
- CSONKA OF BRINKS 30R4** (P)
- MISS BRINKS UPPERCUT 30L18 (P)
- S OAKLANDS AMBASSADOR** (P)(AI)(ET)
- SUNDANCE OF BRINKS 392G9 (P)
- MISS BRINKS SUNDANCE 392L** (P)
- MISS BRINKS TROOPER 392G18 (P)

- COOLABAH MATT (S)
- COUTI-OUTI JOCK** (P)
- COUTI-OUTI FENULA (P)
- D BIMBADEEN Q R379** (P)
- BIMBADEEN Q NW 875 (P)
- BIMBADEEN Q K041** (P)
- BIMBADEEN Q D04 (P)

Superstar: Top 10% 200dw & SS, top 15% 600dw & CWT, top 20% 400dw & MCW, homozygous poll & colour, 40cm scrotal & 7 tenderness

PURCHASER: \$
20

Bimbadeen Q
PANAMA (P)

LIVE AUCTION
5

★ REGISTERED ★

Ident: **BIM17RP29**
DOB: **27/10/2017**
% BI: **43%**
GENS: **1**

GL	-1.1	28%
BW	1.1	46%
200D	17	61%
400D	20	60%
600D	27	54%
MCWT	21	42%
MILK	1	38%
SS	1.6	70%
CWT	12	48%

DATE	WEIGHT
Wean	330kg
400D	502kg

SCROTAL	MORPH
39cm	90%

H/POLL	COLOUR
Pc/Pc	ED/ED

ESTIMATED BREEDING VALUES

- LEAD GUN OF BRINKS 222K14 (P)
- CSONKA OF BRINKS 30R4** (P)
- MISS BRINKS UPPERCUT 30L18 (P)
- S OAKLANDS AMBASSADOR** (P)(AI)(ET)
- SUNDANCE OF BRINKS 392G9 (P)
- MISS BRINKS SUNDANCE 392L** (P)
- MISS BRINKS TROOPER 392G18 (P)

- GREENDALE KINSEY (P)
- GREENDALE TRACTION** (P)
- GREENDALE NEGATE 661 (P)
- D BIMBADEEN Q E0032** (P)
- BRANGUS BULL (P)
- BIMBADEEN Q H061** (P)
- BRANGUS COW (P)

Style & Substance: Top 10% ss, top 15% milk, homozygous poll & black coat, 90% morph & 9 tenderness

PURCHASER: \$
21

ESTIMATED BREEDING VALUES



Bimbadeen Q
PRINCE (P)

LEAD GUN OF BRINKS 222K14 (P)
CSONKA OF BRINKS 30R4 (P)
 MISS BRINKS UPPERCUT 30L18 (P)

S TELPARA HILLS MUNDINE 820J2 (P)(AI)
 BRINKS BRIGHT SIDE 607 L11 ET (P)
TELPARA HILLS MISS L11 820D4 (P)(ET)
 CENTER MS BEST BET 820/R42 (S)

BONOX 302 (P)
BIMBADEEN Q G013 (P)
 BIMBADEEN Q K114 (P)

D BIMBADEEN Q J193 (P)
 DOONSIDE DR MOK (S)
BIMBADEEN Q G159 (P)
 BIMBADEEN Q Q007 (P)

Type & Temp: Top 10% milk, top 20% 400dw, SS, EMA & retail \$, top 25% 600dw, homozygous poll & coat colour

PURCHASER: \$
22

LIVE AUCTION

6

★ REGISTERED ★

Ident: **BIM17RP75**
 DOB: **27/10/2017**
 % BI: **44%**
 GENS: **2**

ESTIMATED BREEDING VALUES		
GL	-1	27%
BW	0.1	44%
200D	14	59%
400D	31	59%
600D	32	52%
MCWT	26	39%
MILK	1	36%
SS	0	69%
CWT	18	46%

VET WEIGHTS	
DATE Wean	WEIGHT 280kg
400D	536kg
SCROTAL 34cm	MORPH 70%
H/POLL Pc/Pc	COLOUR ED/ED

GENE VET WEIGHTS ESTIMATED BREEDING VALUES



Bimbadeen Q
PROPHET (P)

LEAD GUN OF BRINKS 222K14 (P)
CSONKA OF BRINKS 30R4 (P)
 MISS BRINKS UPPERCUT 30L18 (P)

S OAKLANDS AMBASSADOR (P)(AI)(ET)
 SUNDANCE OF BRINKS 392G9 (P)
MISS BRINKS SUNDANCE 392L (P)
 MISS BRINKS TROOPER 392G18 (P)

BARWONGA 926 (P)
BONOX 302 (P)
 BRANGUS COW (P)

D BIMBADEEN Q F10 (P)
 GREENDALE KINSEY (P)
GREENDALE X416 (P)
 GREENDALE SALLY (P)

Divine: Top 1% ss 43cm, top 15% 200dw, top 30% IMF, homozygous poll and coat colour, 43cm scrotal

PURCHASER: \$
23

LIVE AUCTION

7

★ REGISTERED ★

Ident: **BIM17RP30**
 DOB: **10/11/2017**
 % BI: **45%**
 GENS: **1**

ESTIMATED BREEDING VALUES		
GL	-0.8	29%
BW	1.8	46%
200D	20	61%
400D	22	61%
600D	28	54%
MCWT	20	41%
MILK	-1	37%
SS	2.8	70%
CWT	12	48%

VET WEIGHTS	
DATE Wean	WEIGHT 356kg
400D	510kg
SCROTAL 43cm	MORPH 71%
H/POLL Pc/Pc	COLOUR ED/ED

GENE VET WEIGHTS ESTIMATED BREEDING VALUES



Bimbaddeen Q
PRESIDENT (P)

LEAD GUN OF BRINKS 222K14 (P)
CSONKA OF BRINKS 30R4 (P)
 MISS BRINKS UPPERCUT 30L18 (P)

S OAKLANDS AMBASSADOR (P)(AI)(ET)

SUNDANCE OF BRINKS 392G9 (P)
MISS BRINKS SUNDANCE 392L (P)
 MISS BRINKS TROOPER 392G18 (P)

GREENDALE KINSEY (P)
GREENDALE TRACTION (P)
 GREENDALE NEGATE 661 (P)

D BIMBADEEN Q E0012 (P)

GREENDALE X684 (P)
BIMBADEEN Q H211 (P)
 BIMBADEEN 743 (P)

Taking Charge: Top 5% SS, top 10% milk, top 15% 200dw, top 20% 600dw, 92% morph

PURCHASER: \$
24

LIVE AUCTION

8

★ REGISTERED ★

Ident: **BIM17RP53**
 DOB: **10/11/2017**
 % BI: **49%**
 GENS: **2**

ESTIMATED BREEDING VALUES		
GL	-0.8	28%
BW	1.7	47%
200D	21	61%
400D	28	61%
600D	35	54%
MCWT	29	42%
MILK	1	38%
SS	2.2	70%
CWT	16	49%

VET WEIGHTS	
DATE Wean	WEIGHT 346kg
400D	546kg
SCROTAL 41cm	MORPH 92%
H/POLL HPc	COLOUR ED/ED



Bimbaddeen Q
PRESLEY (P)

LEAD GUN OF BRINKS 222K14 (P)
SINGLETERY OF BRINKS 675R (P)
 MS BRINKS UPPERCUT 209N11 (P)

S BIMBADEEN Q LITCHFIELD L12 (P)(AI)(ET)

SUNDANCE OF BRINKS 392G9 (P)
TELPARA HILLS MISS SUNDANCE 541D6 (P)(ET)
 MISS BRINKS KO 541L41 (P)(ET)

WASHINGTON OF BRINKS 302S47 (P)
BIMBADEEN Q H1 (P)(AI)(ET)
 MS BRINKS TRACKER 302R38 (P)

D BIMBADEEN Q L31 (P)

GREENDALE TRACTION (P)
BIMBADEEN Q E0032 (P)
 BIMBADEEN Q H061 (P)

Cool & Consistent: Top 20% milk & 600dw, top 25% MCWT, CWT and SS, homozygous poll & coat colour

PURCHASER: \$
25

LIVE AUCTION

9

★ REGISTERED ★

Ident: **BIM17RP0127**
 DOB: **30/10/2017**
 % BI: **40%**
 GENS: **2**

ESTIMATED BREEDING VALUES		
GL	-0.7	25%
BW	1.4	44%
200D	16	58%
400D	29	58%
600D	36	51%
MCWT	30	38%
MILK	0	34%
SS	1	68%
CWT	18	45%

VET WEIGHTS	
DATE Wean	WEIGHT 333kg
400D	550kg
SCROTAL 37cm	MORPH 87%
H/POLL Pc/Pc	COLOUR ED/ED



Bimbadeen Q
PINNACLE (P)

CSONKA OF BRINKS 30R4 (P)
RUSHTON CSONKA'S FORTUNE (P)(ET)
TELPARA HILLS NEW FRONTIER EMPRESS EMPC7 (S)(AI)(ET)

S BIMBADEEN Q KOSCIUSZKO (P)

GREENDALE Y181 (P)
BIMBADEEN Q G173 (P)
BIMBADEEN Q R593 (P)

TRANSFORMER OF BRINKS (P)
DOONSIDE IRA HAYES (P)(AI)
DOONSIDE BB 3704-04 (P)

D BIMBADEEN Q K76 (P)

DOONSIDE BB176-01 (P)(AI)
BIMBADEEN Q D0135 (P)
BIMBADEEN Q P033 (P)

Top Tip: Top 10% 400dw & CWT, top 15% 200dw & 600dw, homozygous poll & coat colour

PURCHASER: \$
26

LIVE AUCTION

10

★ REGISTERED ★

Ident: **BIM17RP0155**
DOB: **13/11/2017**
% BI: **45%**
GENS: **2**

GL	-	-
BW	1.1	41%
200D	19	58%
400D	38	57%
600D	41	50%
MCWT	36	35%
MILK	-2	30%
SS	0	68%
CWT	22	43%

DATE	WEIGHT
Wean	289kg
400D	544kg

SCROTAL	MORPH
35cm	87%

H/POLL	COLOUR
Pc/Pc	ED/ED

ESTIMATED BREEDING VALUES



Bimbadeen Q
PASTEUR (P)

LEAD GUN OF BRINKS 222K14 (P)
CSONKA OF BRINKS 30R4 (P)
MISS BRINKS UPPERCUT 30L18 (P)

S OAKLANDS AMBASSADOR (P)(AI)(ET)

SUNDANCE OF BRINKS 392G9 (P)
MISS BRINKS SUNDANCE 392L (P)
MISS BRINKS TROOPER 392G18 (P)

XS JOHNNY LEE 369H (S)
GREENDALE U83 (P)(AI)
GREENDALE SKYE (P)

D BIMBADEEN Q Q105 (P)

BIMBADEEN Q B04 (P)(AI)
BIMBADEEN Q H234 (P)
BIMBADEEN Q B126 (P)(AI)

Magic Mix: Top 10% SS, top 15% 200dw, top 20% 600dw, MCWT, CWT, homozygous coat & colour

PURCHASER: \$
27

LIVE AUCTION

11

★ REGISTERED ★

Ident: **BIM17RP229**
DOB: **20/11/2017**
% BI: **44%**
GENS: **3**

GL	-0.5	29%
BW	1.9	46%
200D	21	58%
400D	30	58%
600D	38	53%
MCWT	32	42%
MILK	0	40%
SS	1.6	62%
CWT	18	47%

DATE	WEIGHT
Wean	347kg
400D	536kg

SCROTAL	MORPH
37cm	87%

H/POLL	COLOUR
Pc/Pc	ED/ED

ESTIMATED BREEDING VALUES



Bimbadeen Q
POLAND (P)

CX CHIEF ADVANTAGE 143/L (P)
 CX HOME RUN 135/P (P)
 MS HS 135F/K (P)

S DOONSIDE FRANCHISE 1938 (P)(AI)

DUARRAN HARRISON (P)
DOONSIDE 4941 (P)
 DOONSIDE RB3805-05 (P)

PFR ICONS 707/6 (P)
DOONSIDE 553 (P)(AI)
 DOONSIDE 243 (P)

D BIMBADEEN Q F256 (P)

BIMBADEEN Q NW 875 (P)
BIMBADEEN Q K319 (P)
 BIMBADEEN 937 (P)

Red & Rich: 39cm scrotal, 85% morph, homozygous (red) coat colour

PURCHASER: _____ \$
 28

LIVE AUCTION

12

★ REGISTERED ★

Ident: **BIM17RP204**
 DOB: **01/11/2017**
 % BI: **46%**
 GENS: **1**

	GL	-	-
BW	-0.6	39%	
200D	7	58%	
400D	16	58%	
600D	20	49%	
MCWT	20	32%	
MILK	0	25%	
SS	0.7	68%	
CWT	10	42%	

DATE	WEIGHT
Wean	327kg
400D	542kg

SCROTAL	MORPH
39cm	85%

H/POLL	COLOUR
HPc	e/e

ESTIMATED BREEDING VALUES

DJ's

Steel & Concrete

Proudly
 Supporting
**BIMBADEEN
 BRANGUS**

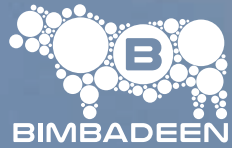


MONTO
4166 1747

EIDSVOLD
4165 1762

BILOELA
4992 2197

www.djsteel.com.au



MOORE STEPHENS

**Proud supporters of the
2019 Bimbadeen Brangus Sale.**

**Moore Stephens understands the
unique needs of primary producers and
has been helping them make strong
business decisions for over 50 years.**

Call us to discuss your needs.



Geoff Arnold
Biloela
0427 313 915



Vickie White
Rockhampton
0447 631 439



Nicole Richter
Biloela
0438 240 274



Bimbadeen Q
PETER PAN (P)(AI)

HELMSMAN

13

★ CALF REC'D ★

Ident: **BIM17RP0126**
DOB: **13/11/2017**
% BI: **47%**
GENS: **1**

COUTI-OUTI VICTORY (P)
COUTI-OUTI AGRO (P)
COUTI-OUTI WARATAH (P)

S GREENDALE QUICK MOVE (P)

BIMBADEEN 501 (P)
GREENDALE JO-JO (P)
GREENDALE EVE (P)

WASHINGTON OF BRINKS 302S47 (P)
BIMBADEEN Q H1 (P)(AI)(ET)
MS BRINKS TRACKER 302R38 (P)

D BIMBADEEN Q L43 (P)

BRANGUS BULL (P)
BIMBADEEN Q Q103 (P)
BIMBADEEN Q K147 (P)

Eye Appeal & Action: Homozygous poll & coat colour, great fleshing & movement, 88% morph

PURCHASER: \$ 32

GL	-	-
BW	0.4	46%
200D	12	61%
400D	17	61%
600D	18	55%
MCWT	15	42%
MILK	-1	45%
SS	-0.2	67%
CWT	10	48%

DATE	WEIGHT
Wean	312kg
400D	490kg

SCROTAL	MORPH
36cm	88%

H/POLL	COLOUR
Pc/Pc	ED/ED

ESTIMATED BREEDING VALUES

Bimbadeen Q
PELE (P)

HELMSMAN

14

★ CALF REC'D ★

Ident: **BIM17RP98**
DOB: **08/12/2017**
% BI: **44%**
GENS: **3**

LEAD GUN OF BRINKS 222K14 (P)
CSONKA OF BRINKS 30R4 (P)
MISS BRINKS UPPERCUT 30L18 (P)

S TELPARA HILLS MUNDINE 820J2 (P)(AI)

BRINKS BRIGHT SIDE 607 L11 ET (P)
TELPARA HILLS MISS L11 820D4 (P)(ET)
CENTER MS BEST BET 820/R42 (S)

GREENDALE KINSEY (P)
GREENDALE TRACTION (P)
GREENDALE NEGATE 661 (P)

D BIMBADEEN Q E68 (P)

BINDAREE BALLERO (P)
BIMBADEEN Q P111 (P)
BIMBADEEN Q K087 (P)

Goal Kicker: Top 1% milk, top 20% gestation length & 200dw, top 30% 200 & 400dw, 3 gens

PURCHASER: \$ 33

GL	1.1	28%
BW	0.9	45%
200D	18	61%
400D	28	60%
600D	32	53%
MCWT	27	41%
MILK	3	38%
SS	0.7	69%
CWT	16	47%

DATE	WEIGHT
Wean	293kg
400D	526kg

SCROTAL	MORPH
40cm	83%

H/POLL	COLOUR
n/a	ED/ED

ESTIMATED BREEDING VALUES



Bimbadeen Q
POSEIDON (P)

LEAD GUN OF BRINKS 222K14 (P)
CSONKA OF BRINKS 30R4 (P)
 MISS BRINKS UPPERCUT 30L18 (P)

S OAKLANDS AMBASSADOR (P)(AI)(ET)
 SUNDANCE OF BRINKS 392G9 (P)
MISS BRINKS SUNDANCE 392L (P)
 MISS BRINKS TROOPER 392G18 (P)

TRANSFORMER OF BRINKS (P)
DOONSIDE BB176-01 (P)(AI)
 DOONSIDE 277 (P)(AI)

D BIMBADEEN Q F214 (P)
 GLENOCH STOCKWHIP (P)
BIMBADEEN Q L245 (P)

Godly: Top 1% SS, top 5% 200dw, 400dw, 600dw, CWT, top 15% MCWT, top 20% milk & EMA, 92% morph

PURCHASER: \$
34

HELMSMAN
15

★ CALF REC'D ★

Ident: **BIM17RP57**
 DOB: **29/09/2017**
 % BI: **41%**
 GENS: **1**

ESTIMATED BREEDING VALUES		
GL	-1.1	29%
BW	2.5	46%
200D	26	61%
400D	44	59%
600D	49	53%
MCWT	37	41%
MILK	0	38%
SS	2.5	63%
CWT	24	47%

GENE VET WEIGHTS	
DATE Wean	WEIGHT 379kg
400D	538kg
SCROTAL 36cm	MORPH 92%
H/POLL HPc	COLOUR ED/ED

Bimbadeen Q
POWER (AI)

CADENCE OF BRINKS (P)
LEAD GUN OF BRINKS 222K14 (P)
 MISS BB NEW BIG EASY 222E55 (P)

S WASHINGTON OF BRINKS 302S47 (P)
 BRIGHT SIDE OF BRINKS 789G5 (P)
MS BRINKS BRIGHT SIDE 302L9 (P)
 MISS BRINKS GERONIMO 302H6 (P)

BONOX 368 (P)
BONOX 505 (P)
 BONOX B211 (P)

D BIMBADEEN Q L90 (P)
 GREENDALE TRACTION (P)
BIMBADEEN Q E155 (P)
 BIMBADEEN Q L090 (P)

Powerpack: Terrific heifer bull, homozygous poll & coat colour, top 35% SS, 3 gens

PURCHASER: \$
35

HELMSMAN
16

★ CALF REC'D ★

Ident: **BIM17RP0124**
 DOB: **13/11/2017**
 % BI: **43%**
 GENS: **3**

ESTIMATED BREEDING VALUES		
GL	-0.3	34%
BW	0	49%
200D	12	59%
400D	23	60%
600D	25	53%
MCWT	21	40%
MILK	-1	38%
SS	0.8	68%
CWT	15	47%

GENE VET WEIGHTS	
DATE Wean	WEIGHT 275kg
400D	492kg
SCROTAL 37cm	MORPH 86%
H/POLL Pc/Pc	COLOUR ED/ED



Bimbadeen Q
PANTHER (P)

HELMSMAN
17

★ COMMERCIAL ★

Ident: **BIM17CP27**
DOB: **26/10/2017**
% BI: **42%**
GENS:

SUHN'S AFFIRMED 416N4 (P)
CB HOMBRE 541T3 (P)
MS BRINKS BRIGHT SIDE 541K28 (S)

S TELPARA HILLS JACKMAN 541H17 (P)(AI)(ET)
SINGLETARY OF BRINKS 675R (P)
TELPARA HILLS MISS SINGLETARY 541E (P)(ET)
MS BRINKS SUNDANCE 541M43 (P)

TRANSFORMER OF BRINKS (P)
DOONSIDE BB176-01 (P)(AI)
DOONSIDE 277 (P)(AI)

D BIMBADEEN Q D0133 (COM)(P)
BRANGUS BULL (P)
BIMBADEEN Q M231 (COM)(P)
BRANGUS COW (P)

Top Cat: Top 15% 200dw, top 20% EMA, top 25% 400dw, top 30% 600dw, homozygous coat colour and 7 tenderness

PURCHASER: \$
36

GL	-0.2	27%
BW	1.5	46%
200D	20	62%
400D	30	61%
600D	32	55%
MCWT	18	42%
MILK	-1	34%
SS	0.6	70%
CWT	16	48%

DATE	WEIGHT
Wean	330kg
400D	528kg
SCROTAL	MORPH
36cm	86%
H/POLL	COLOUR
HPc	ED/ED

ESTIMATED BREEDING VALUES
GENE VET WEIGHTS

Bimbadeen Q
PAYGRADE (P)

HELMSMAN
18

★ REGISTERED ★

LEAD GUN OF BRINKS 222K14 (P)
CSONKA OF BRINKS 30R4 (P)
MISS BRINKS UPPERCUT 30L18 (P)

S TELPARA HILLS MUNDINE 820J2 (P)(AI)
BRINKS BRIGHT SIDE 607 L11 ET (P)
TELPARA HILLS MISS L11 820D4 (P)(ET)
CENTER MS BEST BET 820/R42 (S)

TRANSFORMER OF BRINKS (P)
DOONSIDE IRA HAYES (P)(AI)
DOONSIDE BB 3704-04 (P)

D BIMBADEEN Q K59 (P)
COUTI-OUTI JOCK (P)
BIMBADEEN Q R1 (P)
BIMBADEEN Q J133 (P)

Paydirt: Top 1% SS, top 10% 200dw & 600dw, top 15% 400dw, MCW, CWT & retail \$, homozygous poll

PURCHASER: \$
37

GL	-1.2	28%
BW	1.8	45%
200D	23	60%
400D	38	59%
600D	43	53%
MCWT	36	40%
MILK	-1	36%
SS	2.6	69%
CWT	21	47%

DATE	WEIGHT
Wean	299kg
400D	522kg
SCROTAL	MORPH
41cm	79%
H/POLL	COLOUR
Pc/Pc	ED/E+

ESTIMATED BREEDING VALUES
GENE VET WEIGHTS



Bimbadeen Q
PIONEER (P)

LEAD GUN OF BRINKS 222K14 (P)
CSONKA OF BRINKS 30R4 (P)
 MISS BRINKS UPPERCUT 30L18 (P)

S OAKLANDS AMBASSADOR (P)(AI)(ET)

SUNDANCE OF BRINKS 392G9 (P)
MISS BRINKS SUNDANCE 392L (P)
 MISS BRINKS TROOPER 392G18 (P)

BARWONGA 926 (P)
BONOX 302 (P)

D BIMBADEEN Q G01 (P)

BIMBADEEN Q E118 (P)
BIMBADEEN Q PRUDENCE P65 (P)
 BIMBADEEN Q L43 (P)

Forging Ahead: Top 5% SS, homozygous poll & coat colour, tenderness 7, 90% morph

PURCHASER: \$
38

HELMSMAN

19

★ CALF REC'D ★

Ident: **BIM17RP38**
 DOB: **10/11/2017**
 % BI: **46%**
 GENS: **1**

	GL	28%
	-0.6	
	0.7	46%
	14	61%
	22	60%
	26	53%
	20	41%
	-2	37%
	2.2	70%
	13	48%

DATE	WEIGHT
Wean	273kg
400D	476kg
SCROTAL	MORPH
38cm	90%
H/POLL	COLOUR
Pc/Pc	ED/ED

ESTIMATED BREEDING VALUES
GENE VET WEIGHTS

Bimbadeen Q
PICUS (P)

LEAD GUN OF BRINKS 222K14 (P)
CSONKA OF BRINKS 30R4 (P)
 MISS BRINKS UPPERCUT 30L18 (P)

S TELPARA HILLS MUNDINE 820J2 (P)(AI)

BRINKS BRIGHT SIDE 607 L11 ET (P)
TELPARA HILLS MISS L11 820D4 (P)(ET)
 CENTER MS BEST BET 820/R42 (S)

DOONSIDE WITCHDOCTOR (P)(AI)
DOONSIDE DR MOK (S)
 GREENDALE PRECISE (P)

D BIMBADEEN Q G0158 (P)

GREENDALE URANIA (P)
BIMBADEEN Q R608 (P)
 BIMBADEEN Q K119 (P)

Scene Stealer: Top 5% SS & milk, top 25% 200dw, top 30% GL, 600dw, MCWT, homozygous poll & colour

PURCHASER: \$
39

HELMSMAN

20

★ REGISTERED ★

Ident: **BIM17RP108**
 DOB: **24/11/2017**
 % BI: **45%**
 GENS: **3**

	GL	28%
	-1.1	
	0.7	45%
	16	61%
	21	60%
	26	53%
	20	41%
	2	36%
	1.9	69%
	12	47%

DATE	WEIGHT
Wean	309kg
400D	480kg
SCROTAL	MORPH
39cm	80%
H/POLL	COLOUR
Pc/Pc	ED/ED

ESTIMATED BREEDING VALUES
GENE VET WEIGHTS



Bimbadeen Q
PRIME TIME (P)(AI)

HELMSMAN
21

★ CALF REC'D ★

Ident: **BIM17RP0133**
 DOB: **30/10/2017**
 % BI: **42%**
 GENS: **2**

GL	-0.4	34%
BW	1.0	49%
200D	17	59%
400D	28	60%
600D	32	53%
MCWT	27	41%
MILK	0	38%
SS	2.5	68%
CWT	16	47%

DATE Wean	WEIGHT
400D	352kg
	548kg
SCROTAL	MORPH
43cm	72%
H/POLL	COLOUR
Pc/Pc	ED/ED

S WASHINGTON OF BRINKS 302S47 (P)

BRIGHT SIDE OF BRINKS 789G5 (P)

MS BRINKS BRIGHT SIDE 302L9 (P)

MISS BRINKS GERONIMO 302H6 (P)

BONOX 368 (P)

BONOX 505 (P)

BONOX B211 (P)

D BIMBADEEN Q L110 (P)

GREENDALE TRACTION (P)

BIMBADEEN Q E0137 (P)

BIMBADEEN Q L196 (P)

Sure Thing: Top 1% SS, top 25% 200dw, top 30% 400dw, 600dw, CWT, homozygous poll & coat, tenderness 7

PURCHASER: \$ 40

Bimbadeen Q
PICASSO (P)

HELMSMAN
22

★ REGISTERED ★

Ident: **BIM17FP10**
 DOB: **23/11/2017**
 % BI: **44%**
 GENS: **F**

GL	-0.2	25%
BW	-0.5	42%
200D	10	57%
400D	20	58%
600D	16	50%
MCWT	2	38%
MILK	-4	29%
SS	-1.1	69%
CWT	12	45%

DATE Wean	WEIGHT
400D	269kg
	478kg
SCROTAL	MORPH
35cm	89%
H/POLL	COLOUR
Pc/Pc	ED/ED

SUHN'S AFFIRMED 416N4 (P)

CB HOMBRE 541T3 (P)

MS BRINKS BRIGHT SIDE 541K28 (S)

S TELPARA HILLS JACKMAN 541H17 (P)(AI)(ET)

SINGLETARY OF BRINKS 675R (P)

TELPARA HILLS MISS SINGLETARY 541E (P)(ET)

MS BRINKS SUNDANCE 541M43 (P)

BRANGUS BULL (P)

D BIMBADEEN Q J163 (P)

BRANGUS COW (P)

A Splash of Class: Super stylish bull, homozygous poll & coat colour, tenderness 7, high morphology

PURCHASER: \$ 41

ESTIMATED BREEDING VALUES

ESTIMATED BREEDING VALUES

GENE VET WEIGHTS

GENE VET WEIGHTS



Bimbadeen Q
PRINCIPLE (P)

SUHN'S AFFIRMED 416N4 (P)
CB HOMBRE 541T3 (P)
MS BRINKS BRIGHT SIDE 541K28 (S)

S TELPARA HILLS JACKMAN 541H17 (P)(AI)(ET)
SINGLETARY OF BRINKS 675R (P)
TELPARA HILLS MISS SINGLETARY 541E (P)(ET)
MS BRINKS SUNDANCE 541M43 (P)

BRANGUS BULL B62A38 (P)

D BIMBADEEN Q R065 (P)

BRANGUS COW (P)

Great Heifer Bull: Top 25% birth weight, homozygous poll & coat colour, tenderness 7

PURCHASER: \$
42

HELMSMAN
23

★ CALF REC'D ★

Ident: **BIM17FP9**
DOB: **26/10/2017**
% BI: **47%**
GENS: **F**

GL	0.0	25%
BW	-1.0	43%
200D	6	59%
400D	24	60%
600D	17	52%
MCWT	5	39%
MILK	-5	36%
SS	-0.2	70%
CWT	13	46%

DATE	WEIGHT
Wean	238kg
400D	504kg
SCROTAL	MORPH
36cm	75%
H/POLL	COLOUR
Pc/Pc	ED/ED

ESTIMATED BREEDING VALUES
GENE VET WEIGHTS



Bimbadeen Q
PLUTUS (P)

LEAD GUN OF BRINKS 222K14 (P)
CSONKA OF BRINKS 30R4 (P)
MISS BRINKS UPPERCUT 30L18 (P)

S OAKLANDS AMBASSADOR (P)(AI)(ET)
SUNDANCE OF BRINKS 392G9 (P)
MISS BRINKS SUNDANCE 392L (P)
MISS BRINKS TROOPER 392G18 (P)

BRANGUS BULL B62A38 (P)

D BIMBADEEN Q J299 (P)

BRANGUS COW B62A38 (P)

Slick & Stylish: Top 10% SS, top 20% 400dw & CWT, top 25% 200dw, homozygous poll & coat colour

PURCHASER: \$
43

HELMSMAN
24

★ CALF REC'D ★

Ident: **BIM17FP34**
DOB: **27/10/2017**
% BI: **50%**
GENS: **F**

GL	-0.9	27%
BW	0.8	43%
200D	18	58%
400D	32	58%
600D	31	50%
MCWT	19	38%
MILK	-4	31%
SS	1.4	69%
CWT	18	45%

DATE	WEIGHT
Wean	335kg
400D	544kg
SCROTAL	MORPH
38cm	88%
H/POLL	COLOUR
Pc/Pc	ED/ED

ESTIMATED BREEDING VALUES
GENE VET WEIGHTS



Bimbadeen Q
PITCH (P)

LEAD GUN OF BRINKS 222K14 (P)
CSONKA OF BRINKS 30R4 (P)
 MISS BRINKS UPPERCUT 30L18 (P)

S OAKLANDS AMBASSADOR (P)(AI)(ET)
 SUNDANCE OF BRINKS 392G9 (P)
MISS BRINKS SUNDANCE 392L (P)
 MISS BRINKS TROOPER 392G18 (P)

BRANGUS BULL (P)

D BIMBADEEN Q R614 (COM)(P)
 BIMBADEEN Q H139 (P)
BIMBADEEN Q L196 (P)
 BRANGUS COW (P)

Top Timbre: Top 10% 200dw, top 15% CW, top 20% milk, top 30% GL & 600dw

PURCHASER: \$
44

HELMSMAN
25
★ COMMERCIAL ★

Ident: **BIM17CP36**
 DOB: **08/12/2017**
 % BI: **44%**
 GENS:

GL	-1.1	27%
BW	1.6	46%
200D	23	61%
400D	26	60%
600D	31	53%
MCWT	18	40%
MILK	0	34%
SS	0.5	69%
CWT	15	47%

DATE	WEIGHT
Wean	305kg
400D	475kg
SCROTAL	MORPH
37cm	72%
H/POLL	COLOUR
Pc/Pc	ED/ED

ESTIMATED BREEDING VALUES
GENE VET WEIGHTS



Fortnightly
Fat & Store Cattle Sales

SPECIAL STORE SALE
Wednesday,
11th September 2019

Rural & Residential
Property Sales

Livestock
Scanning
Requirements

Locally Owned
& Operated

*Your Local
Stock & Station Agent*

Brad & Donna McNally
 31 Newton Street, Monto

P. 07 4166 1662 M. 0428 780 414
 E info@montocattleandcountry.com.au

www.montocattleandcountry.com.au





Bimbadeen Q
PARADE (AI)

- COUTI-OUTI WILLS (P)
- GREENDALE KINSEY** (P)
- GREENDALE IMESSA (P)
- S GREENDALE OSCAR** (P)
- LANCEFIELD DON RICO (P)
- GREENDALE LANDFALL** (P)
- GREENDALE BETH (P)

- GREENDALE Z253 (P)
- BIMBADEEN Q E548** (P)
- BIMBADEEN Q L43 (P)
- D BIMBADEEN Q L82** (P)
- GREENDALE ULUATE (P)(ET)
- BIMBADEEN Q Q014** (P)
- GREENDALE X416 (P)

Greendale Elite: Higher content top 5% milk, homozygous poll & coat colour, 3 gens, great skin

PURCHASER: \$
46

HELMSMAN
26

★ REGISTERED ★

Ident: **BIM17RP138**
DOB: **16/10/2017**
% BI: **55%**
GENS: **3**

GL	0.1	35%
BW	-0.6	55%
200D	6	63%
400D	7	63%
600D	5	58%
MCWT	8	49%
MILK	2	48%
SS	-0.6	70%
CWT	2	53%

DATE Wean	WEIGHT
400D	300kg
	512kg
SCROTAL	MORPH
35cm	81%
H/POLL	COLOUR
Pc/Pc	ED/ED

ESTIMATED BREEDING VALUES
GENE VET WEIGHTS



Bimbadeen Q
PLAYMATE (P)

- LEAD GUN OF BRINKS 222K14 (P)
- CSONKA OF BRINKS 30R4** (P)
- MISS BRINKS UPPERCUT 30L18 (P)
- S TELPARA HILLS MUNDINE 820J2** (P)(AI)
- BRINKS BRIGHT SIDE 607 L11 ET (P)
- TELPARA HILLS MISS L11 820D4** (P)(ET)
- CENTER MS BEST BET 820/R42 (S)

- GREENDALE OSCAR (P)
- BIMBADEEN Q GRAPHITE** (P)
- BIMBADEEN Q D0314 (P)
- D BIMBADEEN Q K36** (P)
- DOONSIDE IRA HAYES (P)(AI)
- BIMBADEEN Q G231** (P)
- BIMBADEEN Q Q143 (P)

Ready to Play: Top 25% retail\$, top 30% SS & 400dw, homozygous poll & coat colour

PURCHASER: \$
47

HELMSMAN
27

★ REGISTERED ★

Ident: **BIM17RP86**
DOB: **11/10/2017**
% BI: **43%**
GENS: **F**

GL	-1.0	28%
BW	0.2	44%
200D	14	59%
400D	27	59%
600D	28	52%
MCWT	21	40%
MILK	-1	35%
SS	0.3	69%
CWT	16	46%

DATE Wean	WEIGHT
400D	284kg
	489kg
SCROTAL	MORPH
35cm	74%
H/POLL	COLOUR
Pc/Pc	ED/ED

ESTIMATED BREEDING VALUES
GENE VET WEIGHTS



Bimbadeen Q
PEPPARD (P)

SUHN'S AFFIRMED 416N4 (P)
CB HOMBRE 541T3 (P)
MS BRINKS BRIGHT SIDE 541K28 (S)

S TELPARA HILLS JACKMAN 541H17 (P)(AI)(ET)
SINGLETARY OF BRINKS 675R (P)
TELPARA HILLS MISS SINGLETARY 541E (P)(ET)
MS BRINKS SUNDANCE 541M43 (P)

GREENDALE OVERDRIVE (P)
GREENDALE UPHOLD (P)
GREENDALE QUANNA (P)

D BIMBADEEN Q R62 (P)
GREENDALE LONGREACH (P)
BIMBADEEN Q F195+96 (P)
BIMBADEEN Q B126 (P)(AI)

A Team: Top 10% milk, homozygous poll & coat colour, tenderness 7, 3 gens

PURCHASER: \$ 48

HELMSMAN
28

★ CALF REC'D ★

Ident: **BIM17RP3**
DOB: **26/10/2017**
% BI: **43%**
GENS: **3**

	GL	26%
	0.0	
	0.5	47%
	13	62%
	14	61%
	18	55%
	13	42%
	1	35%
	-0.3	69%
	9	48%

DATE	WEIGHT
Wean	306kg
400D	483kg
SCROTAL	MORPH
35cm	72%
H/POLL	COLOUR
Pc/Pc	ED/ED

ESTIMATED BREEDING VALUES

Bimbadeen Q
PEPPER (P)

SUHN'S AFFIRMED 416N4 (P)
CB HOMBRE 541T3 (P)
MS BRINKS BRIGHT SIDE 541K28 (S)

S TELPARA HILLS JACKMAN 541H17 (P)(AI)(ET)
SINGLETARY OF BRINKS 675R (P)
TELPARA HILLS MISS SINGLETARY 541E (P)(ET)
MS BRINKS SUNDANCE 541M43 (P)

BRANGUS BULL (P)

D BIMBADEEN Q J312 (P)

BRANGUS COW (P)

Nice Spice: Great poll & hindquarter muscling, tenderness 7, homozygous poll & coat colour, 95% morphology

PURCHASER: \$ 49

HELMSMAN
29

★ REGISTERED ★

Ident: **BIM17FP7**
DOB: **26/10/2017**
% BI: **44%**
GENS: **F**

	GL	25%
	-0.2	
	-0.5	42%
	10	58%
	17	58%
	13	51%
	-1	38%
	-4	31%
	-1.1	70%
	10	45%

DATE	WEIGHT
Wean	317kg
400D	483kg
SCROTAL	MORPH
35cm	95%
H/POLL	COLOUR
Pc/Pc	ED/ED

ESTIMATED BREEDING VALUES



Bimbadeen Q
PREDICT (P)

LEAD GUN OF BRINKS 222K14 (P)
CSONKA OF BRINKS 30R4 (P)
 MISS BRINKS UPPERCUT 30L18 (P)

S OAKLANDS AMBASSADOR (P)(AI)(ET)

SUNDANCE OF BRINKS 392G9 (P)
MISS BRINKS SUNDANCE 392L (P)
 MISS BRINKS TROOPER 392G18 (P)

GREENDALE KINSEY (P)
GREENDALE TRACTION (P)
 GREENDALE NEGATE 661 (P)

D BIMBADEEN Q D5 (P)

BIMBADEEN A102 (P)
BIMBADEEN Q G085 (P)
 BRANGUS COW (P)

Fine Forecast: Great bone & underline, top 10% milk, top 40% GL, homozygous poll

PURCHASER: \$
50

HELMSMAN

30

★ CALF REC'D ★

Ident: **BIM17RP37**
 DOB: **27/10/2017**
 % BI: **44%**
 GENS: **1**

ESTIMATED BREEDING VALUES		
GL	-0.8	29%
BW	0.5	48%
200D	13	62%
400D	20	62%
600D	24	55%
MCWT	19	42%
MILK	1	39%
SS	0.1	70%
CWT	12	49%

GENE VET WEIGHTS	
DATE Wean	WEIGHT 298kg
400D	506kg
SCROTAL 32cm	MORPH 79%
H/POLL Pc/Pc	COLOUR ED/e

Bimbadeen Q
PROOF (P)

LEAD GUN OF BRINKS 222K14 (P)
CSONKA OF BRINKS 30R4 (P)
 MISS BRINKS UPPERCUT 30L18 (P)

S TELPARA HILLS MUNDINE 820J2 (P)(AI)

BRINKS BRIGHT SIDE 607 L11 ET (P)
TELPARA HILLS MISS L11 820D4 (P)(ET)
 CENTER MS BEST BET 820/R42 (S)

GREENDALE OSCAR (P)
GREENDALE Y0035 (P)
 TE MANIA MOONGARRA M121 (P)

D BIMBADEEN Q E0020 (P)

GREENDALE KARDO (P)
BIMBADEEN Q G170 (P)
 BIMBADEEN Q B102 (P)

Best Evidence: Top 10% milk, top 15% SS, top 30% GL, 200DW, retail \$, top 35% 400dw, 600dw, MCWT

PURCHASER: \$
51

HELMSMAN

31

★ CALF REC'D ★

Ident: **BIM17RP76**
 DOB: **10/11/2017**
 % BI: **39%**
 GENS: **1**

ESTIMATED BREEDING VALUES		
GL	-1.1	29%
BW	0.6	47%
200D	16	61%
400D	24	60%
600D	28	54%
MCWT	24	42%
MILK	1	39%
SS	1.5	69%
CWT	13	48%

GENE VET WEIGHTS	
DATE Wean	WEIGHT 304kg
400D	489kg
SCROTAL 39cm	MORPH 91%
H/POLL Pc/Pc	COLOUR ED/ED



Bimbadeen Q
POKER (P)

LEAD GUN OF BRINKS 222K14 (P)
CSONKA OF BRINKS 30R4 (P)
 MISS BRINKS UPPERCUT 30L18 (P)

S TELPARA HILLS MUNDINE 820J2 (P)(AI)

BRINKS BRIGHT SIDE 607 L11 ET (P)
TELPARA HILLS MISS L11 820D4 (P)(ET)
 CENTER MS BEST BET 820/R42 (S)

BARWONGA 926 (P)
BONOX 302 (P)

D BIMBADEEN Q F16 (P)

BELVIEW IMPACT (P)(AI)
GREENDALE SHERRY (P)
 GREENDALE MEDAL (P)

Great Hand: Top 20% 200dw, top 25% GL, retail \$, top 30% 400dw, top 35% 400dw, milk, CWT & EMA, homozygous poll, tenderness 7

PURCHASER: \$
52

HELMSMAN

32

★ REGISTERED ★

Ident: **BIM17RP82**
 DOB: **27/10/2017**
 % BI: **43%**
 GENS: **1**

	GL	-1.2	27%
	BW	0.8	45%
	200D	18	60%
	400D	26	60%
	600D	30	53%
	MCWT	21	40%
	MILK	-1	37%
	SS	0.7	69%
	CWT	15	47%

DATE	WEIGHT
Wean	334kg
400D	518kg

SCROTAL	MORPH
38cm	90%

H/POLL	COLOUR
Pc/Pc	ED/e

ESTIMATED BREEDING VALUES
GENE VET WEIGHTS



Bimbadeen Q
PLUNDER (P)(AI)

COUTI-OUTI VICTORY (P)
COUTI-OUTI AGRO (P)
 COUTI-OUTI WARATAH (P)

S GREENDALE QUICK MOVE (P)

BIMBADEEN 501 (P)
GREENDALE JO-JO (P)
 GREENDALE EVE (P)

BONOX 368 (P)
BONOX 505 (P)
 BONOX B211 (P)

D BIMBADEEN Q L102 (P)

BIMBADEEN Q Q003 (P)(AI)
BIMBADEEN Q G95 (P)
 BIMBADEEN Q M139 (P)

Green Stuff: Super deep, great skin, gentle nature, homozygous black coat gene

PURCHASER: \$
53

HELMSMAN

33

★ CALF REC'D ★

Ident: **BIM17RP0128**
 DOB: **13/11/2017**
 % BI: **47%**
 GENS: **2**

	GL	-	-
	BW	-0.5	44%
	200D	7	60%
	400D	12	60%
	600D	12	54%
	MCWT	9	41%
	MILK	-2	44%
	SS	-0.5	67%
	CWT	7	48%

DATE	WEIGHT
Wean	288kg
400D	472kg

SCROTAL	MORPH
35cm	87%

H/POLL	COLOUR
HPc	ED/ED

ESTIMATED BREEDING VALUES
GENE VET WEIGHTS



Bimbadeen Q
PALADIN (P)(AI)

CADENCE OF BRINKS (P)
SR CADENCE WARRIOR H823 (P)
SR BLACK VELVET D416 (P)

S TCB CATAWBA WARRIOR R532 (P)

ACES TF WRANGLER 145/8 (P)
SR WARRIOR PRINCESS N332 (P)
SR CHEROKEE PRINCESS L119 (P)

WASHINGTON OF BRINKS 302S47 (P)
BIMBADEEN Q H1 (P)(AI)(ET)
MS BRINKS TRACKER 302R38 (P)

D BIMBADEEN Q L24 (P)

GREENDALE URANIA (P)
BIMBADEEN Q Q064 (P)
BIMBADEEN Q L311 (P)

Champion Cause: Top 1% milk, top 5% SS & EMA, top 15% GL, top 20% 600dw, CWT, 92% morph, homozygous poll, 3 gens

PURCHASER: \$
54

HELMSMAN
34

★ CALF REC'D ★

Ident: BIM17RP0131
DOB: 27/11/2017
% BI: 41%
GENS: 3

ESTIMATED BREEDING VALUES	
GL	-1.7 42%
BW	-0.1 51%
200D	17 61%
400D	27 62%
600D	35 57%
MCWT	25 47%
MILK	2 42%
SS	0.4 70%
CWT	19 50%

GENE VET WEIGHTS	
DATE Wean	WEIGHT 257kg
400D	461kg
SCROTAL 32cm	MORPH 92%
H/POLL Pc/Pc	COLOUR ED/E+

Bimbadeen Q
PASADENA (P)

LEAD GUN OF BRINKS 222K14 (P)
SINGLETERY OF BRINKS 675R (P)
MS BRINKS UPPERCUT 209N11 (P)

S BIMBADEEN Q LITCHFIELD L12 (P)(AI)(ET)

SUNDANCE OF BRINKS 392G9 (P)
TELPARA HILLS MISS SUNDANCE 541D6 (P)(ET)
MISS BRINKS KO 541L41 (P)(ET)

LEAD GUN OF BRINKS 222K14 (P)
CSONKA OF BRINKS 30R4 (P)
MISS BRINKS UPPERCUT 30L18 (P)

D BIMBADEEN Q L101 (P)(AI)

BONOX 474 (P)
BIMBADEEN Q H114 (P)
BIMBADEEN Q E0020 (P)

Class: Top 5% SS, top 20% 600dw, retail \$, top 25% 400dw, CW, top 30% GL, 200dw, MCWT, homozygous poll & coat colour, tenderness 8

PURCHASER: \$
55

HELMSMAN
35

★ CALF REC'D ★

Ident: BIM17RP0137
DOB: 11/12/2017
% BI: 38%
GENS: 3

ESTIMATED BREEDING VALUES	
GL	-1.0 33%
BW	1.0 47%
200D	14 60%
400D	31 57%
600D	37 52%
MCWT	28 42%
MILK	-2 38%
SS	2.7 61%
CWT	18 46%

GENE VET WEIGHTS	
DATE Wean	WEIGHT 244kg
400D	488kg
SCROTAL 38cm	MORPH 74%
H/POLL Pc/Pc	COLOUR ED/ED



*Your specialist
Graphic Designer for the
Australian rural industry*

Advertisements | Stud Sale Catalogues
Promotional Material | Publications
Sale, Trade Show,
Homestead & Property Signage

Simone Roll
Biloela Queensland
M 0429 133 349 E info@rollingdesigns.com.au
www.rollingdesigns.com.au

Nicky Liz Photography



Bimbadeen Q
PEACOCK (P)

COMANDANTE D RIO-C 597 (S)
HUONFELS JACOB RIO (S)(AI)
HUONFELS FAIGA (S)(AI)
S BIMBADEEN Q F1 (P)(AI)(ET)
BUF CRK BARNEY 3474 (RED) USA3474 (S)
WATERFRONT X159 (P)
BARAMUL MORIJITTI (S)

BRANGUS BULL B62A38 (P)

D BIMBADEEN Q J5 (P)

BRANGUS COW (P)

Top 10% BW, homozygous poll & (red) coat colour, tenderness 9

PURCHASER: \$ 57

HELMSMAN
36

★ CALF REC'D ★
Ident: **BIM17FP0171**
DOB: **14/11/2017**
% BI: **53%**
GENS: **F**

GL	-	-
BW	-1.7	36%
200D	1	54%
400D	13	54%
600D	9	45%
MCWT	5	28%
MILK	-	-
SS	-0.3	66%
CWT	8	38%

DATE	WEIGHT
Wean	218kg
400D	504kg

SCROTAL	MORPH
38cm	70%

H/POLL	COLOUR
Pc/Pc	e/e

ESTIMATED BREEDING VALUES
GENE VET WEIGHTS



Bimbadeen Q
POE (P)

CX CHIEF ADVANTAGE 143/L (P)
CX HOME RUN 135/P (P)
MS HS 135F/K (P)

S DOONSIDE FRANCHISE 1938 (P)(AI)

DUARRAN HARRISON (P)
DOONSIDE 4941 (P)
DOONSIDE RB3805-05 (P)

CX HOME RUN 135/P (P)
DOONSIDE FRANCHISE 1938 (P)(AI)
DOONSIDE 4941 (P)

D BIMBADEEN Q M147 (P)

DOONSIDE 553 (P)(AI)
BIMBADEEN Q G275 (P)
BIMBADEEN Q N491 (P)

Great fleshing & temperament, homozygous poll & (red) coat colour

PURCHASER: \$
58

HELMSMAN
37

★ REGISTERED ★

Ident: **BIM17EP212**
DOB: **13/12/2017**
% BI: **44%**
GENS: **E**

GL	-	-
BW	-0.6	41%
200D	8	62%
400D	13	59%
600D	16	51%
MCWT	15	33%
MILK	-	-
SS	-0.1	65%
CWT	9	43%

DATE	WEIGHT
Wean	262kg
400D	455kg

SCROTAL	MORPH
33cm	76%

H/POLL	COLOUR
Pc/Pc	e/e

ESTIMATED BREEDING VALUES
VET WEIGHTS
GENE



Bimbadeen Q
PLANET (P)

COMANDANTE D RIO-C 597 (S)
HUONFELS JACOB RIO (S)(AI)
HUONFELS FAIGA (S)(AI)

S BIMBADEEN Q F1 (P)(AI)(ET)

BUF CRK BARNEY 3474 (RED) USA3474 (S)
WATERFRONT X159 (P)
BARAMUL MORIJITTI (S)

DOONSIDE WITCHDOCTOR (P)(AI)
DOONSIDE DR MOK (S)
GREENDALE PRECISE (P)

D BIMBADEEN Q G0126 (P)

BINDAREE BOONARA (P)
BIMBADEEN Q P004 (P)
BIMBADEEN Q J125 (P)

Top 20% BW, homozygous poll & (red) coat colour

PURCHASER: \$
59

HELMSMAN
38

★ REGISTERED ★

Ident: **BIM17FP176**
DOB: **31/10/2017**
% BI: **53%**
GENS: **F**

GL	-	-
BW	-1.5	40%
200D	0	57%
400D	4	56%
600D	6	48%
MCWT	6	31%
MILK	1	27%
SS	0.4	65%
CWT	3	40%

DATE	WEIGHT
Wean	299kg
400D	498kg

SCROTAL	MORPH
38cm	83%

H/POLL	COLOUR
Pc/Pc	e/e

ESTIMATED BREEDING VALUES
VET WEIGHTS
GENE

Bimbadeen Q PROPOSE (P)

CX CHIEF ADVANTAGE 143/L (P)

CX HOME RUN 135/P (P)

MS HS 135F/K (P)

S DOONSIDE FRANCHISE 1938 (P)(AI)

DUARRAN HARRISON (P)

DOONSIDE 4941 (P)

DOONSIDE RB3805-05 (P)

PFR ICONS 707/6 (P)

DOONSIDE 553 (P)(AI)

DOONSIDE 243 (P)

D BIMBADEEN Q FASHION (P)

KOOROOMBA RED S26 (P)

BIMBADEEN Q K212 (P)

BIMBADEEN Q C10 (P)

Top 5% SS, top 25% BW, homozygous poll & (red) coat colour

PURCHASER: \$

Bimbadeen Q PROSPER (P)

CX CHIEF ADVANTAGE 143/L (P)

CX HOME RUN 135/P (P)

MS HS 135F/K (P)

S DOONSIDE FRANCHISE 1938 (P)(AI)

DUARRAN HARRISON (P)

DOONSIDE 4941 (P)

DOONSIDE RB3805-05 (P)

PFR ICONS 707/6 (P)

DOONSIDE 553 (P)(AI)

DOONSIDE 243 (P)

D BIMBADEEN Q K141 (P)

BIMBADEEN Q DUARRAN FERRIS (P)

BIMBADEEN Q N491 (P)

BIMBADEEN Q D107 (P)

Top 20% BW & SS, homozygous poll & (red) coat colour, tenderness 7

PURCHASER: \$

60

HELMSMAN

39

★ CALF REC'D ★

Ident: **BIM17RP214**

DOB: **15/11/2017**

% Bl: **42%**

GENS: **3**

GL	-	-
BW	-0.9	41%
200D	6	61%
400D	19	59%
600D	21	51%
MCWT	22	34%
MILK	0	29%
SS	1.7	70%
CWT	12	44%

DATE	WEIGHT
Wean	284kg
400D	556kg

SCROTAL	MORPH
41cm	64%

H/POLL	COLOUR
Pc/Pc	e/e

GENE VET WEIGHTS EST. BREEDING VALUES

HELMSMAN

40

★ CALF REC'D ★

Ident: **BIM17RP0192**

DOB: **01/11/2017**

% Bl: **43%**

GENS: **2**

GL	-	-
BW	-0.7	39%
200D	7	59%
400D	18	58%
600D	22	50%
MCWT	21	33%
MILK	-2	26%
SS	1.0	68%
CWT	11	43%

DATE	WEIGHT
Wean	311kg
400D	554kg

SCROTAL	MORPH
38cm	68%

H/POLL	COLOUR
Pc/Pc	e/e

GENE VET WEIGHTS EST. BREEDING VALUES

Heifers



PEN OF 5 BLACK BRANGUS HEIFERS

Age 8-10 months • Vaccinated 5-in-1 and tick fever

PURCHASER: \$

HELMSMAN

41

PEN OF 5 BLACK BRANGUS HEIFERS

Age 8-10 months • Vaccinated 5-in-1 and tick fever

PURCHASER: \$

HELMSMAN

42

PEN OF 5 BLACK BRANGUS HEIFERS

Age 8-10 months • Vaccinated 5-in-1 and tick fever

PURCHASER: \$

HELMSMAN

43



61

PEN OF 5 BLACK BRANGUS HEIFERS

Age 8-10 months • Vaccinated 5-in-1 and tick fever

PURCHASER: \$

HELMSMAN

44

PEN OF 5 BLACK BRANGUS HEIFERS

Age 8-10 months • Vaccinated 5-in-1 and tick fever

PURCHASER: \$

HELMSMAN

48

PEN OF 5 BLACK BRANGUS HEIFERS

Age 8-10 months • Vaccinated 5-in-1 and tick fever

PURCHASER: \$

HELMSMAN

45

PEN OF 5 BLACK BRANGUS HEIFERS

Age 8-10 months • Vaccinated 5-in-1 and tick fever

PURCHASER: \$

HELMSMAN

49

PEN OF 5 BLACK BRANGUS HEIFERS

Age 8-10 months • Vaccinated 5-in-1 and tick fever

PURCHASER: \$

HELMSMAN

46

PEN OF 5 BLACK BRANGUS HEIFERS

Age 8-10 months • Vaccinated 5-in-1 and tick fever

PURCHASER: \$

HELMSMAN

50

PEN OF 5 BLACK BRANGUS HEIFERS

Age 8-10 months • Vaccinated 5-in-1 and tick fever

PURCHASER: \$

HELMSMAN

47

*Heifers will be tagged and sorted into their pen lots a week out from sale.
More images of these lots will be available then,
and shared via Bimbadeen's Facebook page and website*



*Catalogue designed by
Rolling Designs 0429 133 349*

© All artwork, photographs and content remain the property of Bimbadeen Brangus and Rolling Designs are protected by Australian and International copyright laws. Unauthorized copying and/reproduction is prohibited.

While all care has been taken to ensure that information in this catalogue is accurate, Bimbadeen Brangus and Rolling Designs take no responsibility for any mistakes and further actions taken by any party resulting from any mistake.

LIVESTOCK AUCTION

TERMS & CONDITIONS OF SALE

CHAPTER ONE - PRELIMINARY

1. (a) A vendor is bound by these terms and conditions by offering livestock for sale by auction.
(b) An agent (which includes an auctioneer) is bound by these terms and conditions by conducting an auction sale.
(c) A buyer is bound by these terms and conditions by bidding at auction.
(d) **Competition and Consumer Act (Cth) 2010**
It is unlawful for parties that are, or otherwise would be, in competition with each other to make, or give effect to, a contract, arrangement or understanding that contains a provision relating to:
 - i. price-fixing; or
 - ii. restricting outputs in the production and supply chain; or
 - iii. allocating customers, suppliers or territories; or
 - iv. bid-rigging; or
 - v. collusive bidding.Large fines and other sanctions may be imposed for unlawful conduct.
2. (a) In these terms the expression auctioneer, agent, buyer and vendor respectively includes the servants, contractors and agents of each of them. The auctioneer, agent, buyer and vendor shall be wholly responsible for the acts and omissions of their respective servants, contractors and agents. The term "auctioneer" includes, so far as the law and context permits, the vendor's agent.
(b) When used in these terms the expressions "companion animals" means all animals originating from the same property on a particular day. Where lots are split and sent to multiple establishments, then all of these animals shall be regarded as companions.
3. The following applies in interpreting these terms and conditions:
 - (a) The following words have the following meanings:
Fees means all levies, charges, fees, costs and other expenses incurred or relating to these terms and conditions and the sale and purchase of livestock including, without limitation, transaction levies, yard and weigh dues, cartage, advertising and rebates, and whether paid for, or incurred, by the agent;
Livestock means animals auctioned pursuant to these terms and conditions; and
Price means the amount at which the lot has been sold to the buyer referred to in clause 7 of these terms and conditions
 - (i) plus any Fees and other expenses incurred in relation to the purchase of livestock that are payable by the buyer; and
 - (ii) plus any GST added in accordance with clause 12.
 - (b) These terms and conditions are subject to legislation or regulation in the State in which the auction is conducted and in the event of any conflict then the legislation or regulation will prevail. The provisions of these terms and conditions are in addition to, and do not derogate from, the duties and rights of vendors, agents and buyers set out in legislation and regulation in the State in which the auction is conducted.

CHAPTER TWO - STANDARD TERMS OF SALE

4. Subject to any reserve price, and to the right, prior to the fall of the hammer, of the vendor to withdraw any lot without declaring the reserve, the highest bidder shall be the buyer.
5. The auctioneer has the right to bid on behalf of the vendor provided that right is notified prior to the commencement of the sale and is subject to State law.
6. A bid cannot be made or accepted after the fall of the hammer unless, in accordance with clause 8, the auctioneer decides to put the lot up again.
7. Prior to the fall of the hammer the auctioneer shall announce the last bid and receive any further bids. The last price called by the auctioneer at the fall of the hammer shall be the amount at which the lot has been sold.
8. In the event of a disputed bid, the auctioneer is the sole arbitrator of the successful bidder or the auctioneer may decide to put the lot up again. The auctioneer's decision is final.
9. The auctioneer may refuse to accept any bid which, in the auctioneer's opinion, is not in the best interest of the vendor and need not give reasons for doing so.
10. A bidder shall be deemed to be a principal unless, prior to bidding, the bidder has given to the auctioneer a copy of written authority to bid for or on behalf of another person.
11. The successful bidder at a livestock auction sale must give to the auctioneer at the fall of the hammer:
 - (a) the purchaser's name; or
 - (b) the bid card number which identifies the purchaser; or
 - (c) the name of the person on whose behalf the successful bid was made; and
 - (d) the Property Identification Code (known as the "PIC") of destination.
12. The auction shall be conducted on the basis that the bid price shall be exclusive of Goods and Services Tax (GST). GST shall be added after the fall of the hammer for those sales subject to GST.
13. The vendor warrants;
 - (a) That the vendor has (or will have) the right to sell the livestock at the time of delivery; and
 - (b) That the purchaser will obtain title on completion of the purchaser's obligations under this contract including payment.
14. If a buyer does not comply with any of these terms and conditions, which includes the requirements of State law, any livestock knocked down to that buyer may be re-sold by public auction or private contract in whatever lots and manner the auctioneer decides. The re-sale may be with or without notice and shall be at the buyer's risk. The buyer is responsible for all loss and expense arising out of a re-sale and is not entitled to any resulting profit.
15. The buyer of livestock must pay the agent the full amount of the purchase price in immediate funds on receipt of a tax invoice. Payment is required prior to delivery unless some other time for payment is specified in an agreement between the buyer and the auctioneer that was made before the fall of the hammer. If, before delivery, payment has not been made then clauses 20 to 23 apply.
16. No person may bid unless, prior to the commencement of the sale, that person has made arrangements satisfactory to the auctioneer for payment for livestock purchased. If bids in breach of this condition are inadvertently accepted, delivery shall not be given until the purchase money is paid and any law, rule or practice to the contrary is accordingly negated as far as possible.
17. (a) Cattle sold on a liveweight basis that are weighed pre-sale are at the risk and expense of the buyer upon the fall of the hammer.
(b) Cattle sold on a liveweight basis that are weighed post-sale are at the risk and expense of the buyer immediately after weighing.
(c) All livestock other than cattle sold on a liveweight basis are at the risk and expense of the buyer upon the fall of the hammer.
18. (a) Subject to this clause the sale is complete on the fall of the hammer.
(b) The time for rejection is the time commencing at the fall of the hammer and ending at the first of:
 - (i) delivery is taken by a representative of the buyer;
 - (ii) departure of the animal from the purchaser's delivery pen; or
 - (iii) one hour after the last animal is:
 - a. in the case of pre-sale weighing, sold; or
 - b. in the case of post-sale weighing, weighed.
- (c) During the time for rejection the buyer may reject any animal which is lame, blind or diseased where that condition existed prior to the fall of the hammer but could not be reasonably observed when the animal was in the selling pen.
- (d) If the purchaser rejects an animal during the time for rejection then the sale of that animal is cancelled and the animal is returned to the vendor or sold on such terms as any buyer and the agent may agree, after the agent has disclosed the reason for rejection to that buyer.

- (e) This subclause applies only to cattle which are sold in Queensland at auction for slaughter. The agent has responsibility for the prevention of loss or escape (but not death, sickness or injury) of those cattle from the time of the fall of the hammer, for delivery to and from the scales, to the buyer's delivery pen and onto the buyer's nominated transport. This responsibility ends at the earlier of those cattle boarding the buyer's nominated transport or sunset on the day after the sale. This subclause does not apply if the agent makes an announcement to that effect prior to sale.
19. (a) Subject to the right of rejection in Clause 18, all conditions and warranties expressed or implied by law are hereby excluded from the sale to the extent that the law allows. All lots are open for inspection prior to the commencement of the sale and are sold with all faults, if any. No compensation shall be given for any faults, imperfections, errors of description, number in or of any lots sold or otherwise.
(b) Any claim or objection arising out of an error or misdescription in the provision of relevant information in terms of legislation or regulation concerning the National Livestock Identification Scheme (NLIS) must be made by 5:00pm on the seventh day after the fall of the hammer. No objection, requisition or claim against the vendor or agent in respect of such error or misdescription can be made after that time.
(c) Any statements made by the vendor or the auctioneer whether in writing or orally to the effect that any female has been pregnancy tested or scanned positive shall mean and require only that a certificate in writing shall be supplied to the buyer signed by a qualified veterinary surgeon or certified scanner certifying that the said female has been tested or scanned on the date specified in the certificate and that in the opinion of the surgeon or scanner was pregnant on that date.
(d) For slaughter cattle, the agent undertakes to make every reasonable effort to ensure that any NLIS cattle device number is transferred from the saleyard PIC to the purchaser's PIC on the NLIS database no later than midnight on the day of the sale.
(e) For other slaughter livestock the agent undertakes to make every reasonable effort to ensure that the NLIS information is transferred from the saleyard PIC to the purchaser's PIC on the NLIS database no later than midnight on the day of the sale.
(f) Where livestock have a food safety or market eligibility status derived from the National Vendor Declaration (NVD) and/or the NLIS/ERP database, the agent will inform the buyers by presale catalogue and/or announce the status prior to the offering of those lots.
20. If delivery is made to, or possession obtained by, the buyer or its representative before full payment of the Price, then until full payment is received, the buyer:
 - (a) does not acquire title to the livestock;
 - (b) holds the livestock as bailee only for the vendor;
 - (c) must act in a fiduciary capacity in its relationship with the vendor;
 - (d) must store the stock separately or so that they are readily distinguishable from other livestock owned by the buyer;
 - (e) is responsible for the safety and well being of the livestock;
 - (f) may make a bona fide sale for market value of any or all of the livestock. As between the buyer and the subsequent buyer, the sale shall be made by the buyer in its own name and not as agent for the vendor, however as between the vendor and buyer, the sale shall be made as bailee and agent for the vendor; and
 - (g) must keep and account for the proceeds of any subsequent sale separately from its other money and hold those proceeds, together with the benefits of any rights against subsequent buyers, on trust for the vendor.
21. The purchaser agrees that:
 - (a) Clause 20 creates a registrable security interest under the Personal Property Securities Act (Cth) 2009 (PPSA);
 - (b) The Purchaser acknowledges the rights of the Seller (and/or the Agent if Clause 25 applies) to register a financing statement under the PPSA with respect to the security interest created by this clause;
 - (c) the Livestock are collateral for the purposes of the PPSA;
 - (d) to the extent permitted, the Purchaser waives any right the Purchaser has under the PPSA to receive notices; and
 - (e) the date upon which the security interest created by this clause comes into force is the first date on which livestock are delivered pursuant to this contract
22. The buyer may not make any claim against the vendor for actions by the vendor or its agent under clauses 20 or 21 and indemnifies the vendor and its agent against any loss, damage, costs, expenses, penalties, fines or claims suffered by the vendor, the agent or any person or entity arising from the vendor exercising its rights under clauses 20 or 21.
- 23.1. Clause 23 applies whenever the agent pays the vendor before being paid by the buyer, which the agent is not bound to do. The agent is then the del credere agent of the vendor at law.
- 23.2. The vendor hereby gives notice to the buyer of the assignments referred to in clause 23.3.
- 23.3. When this clause applies, in addition to any rights of the agent that arise by operation of the law, the parties agree that, subject to clause 23.5 the agent is subrogated to all rights of the vendor under these terms and conditions against the buyer.
- 23.4. The vendor acknowledges that the agent may take enforcement, repossession or other action to recover any livestock for which the buyer has not paid in full, or the Price of such livestock, owing by the buyer under these terms and conditions:
 - (a) when this clause does not apply, as agent of the vendor (including by reselling the livestock); and
 - (b) when this clause applies, on the agent's own behalf exercising the rights of the vendor by subrogation or assignment under these terms and conditions (whether in the vendor's name or not) and, where title to the livestock has not passed to the agent, by selling the livestock as agent of the vendor without the agent having to account to the vendor for the proceeds of sale.
- 23.5. The agent may at any time, assign, transfer, securitise or otherwise dispose of all or any of its rights under these terms and conditions and any debts created pursuant to it (including, without limitation, the rights assigned to it under clause 23.3).
- 23.6. The vendor hereby irrevocably appoints the agent as the vendor's attorney to:
 - (a) do at any time and in any manner as the agent thinks fit all acts necessary or desirable to perfect or improve the rights and interests afforded, or intended to be afforded, to the agent under these terms and conditions; and
 - (b) appoint one or more sub-attorneys to do anything that the agent may do as the vendor's attorney.
- 23.7. These terms and conditions do not render the agent liable to the buyer as vendor nor entitle the buyer to set off against the agent any right the buyer may have against the vendor or otherwise.
- 23.8. The buyer acknowledges that the provisions of this clause 23 are intended solely for the benefit of the agent (and its assigns) and the vendor. The liabilities and obligations of the buyer will not be in any way affected:
 - (a) by this clause 23, other than as it expressly provides; or
 - (b) by the failure of the agent or the vendor or either of them to comply with the terms of this clause 23.
- 23.9. The buyer must pay all amounts payable to the vendor or the agent under these terms and conditions without any deduction, withholding, set off or counterclaim whatsoever, whether the benefit of a deduction, withholding, set off or counterclaim is alleged to exist in favour of the buyer as against the vendor or the agent in any capacity whatsoever or any other person including any assignor of the vendor's or the buyer's interests under these terms and conditions.
24. (a) The agent agrees that he is liable to pay to the vendor the Price, less such commission as is agreed between the vendor and the agent, and in the absence of any agreement such amount as is reasonable, and less the Fees that are payable by the vendor that were incurred by the agent on behalf of the vendor in relation to the sale of the livestock.
(b) In the event that the buyer pays the Price or part of it direct to the vendor then the agent has no liability to the vendor for the amount of such payment. Further, if the agent pays the vendor any amount which the buyer also pays direct to the vendor in respect of the same livestock, then the vendor must repay the agent that amount and the agent may debit that amount to an account held in the name of the vendor by the agent.
(c) Regardless of whether or not a sale has occurred the agent may, but is not under obligation so to do, instead of deducting payments owed to it by the vendor, debit the amount of the commission and fees to an account held in the name of the vendor by the agent.
25. (a) The auctioneer has been retained by the vendor as auctioneer for the purpose of selling the livestock comprised in the lots. The terms of engagement between the auctioneer and the vendor do not extend to the provision of advice by the auctioneer to the vendor in relation to the safety or otherwise of the sale ring, the saleyards and the surrounding environments.
(b) The vendor, the agent and the buyer agree to comply with their several duties under the Australian Animal Welfare Standards and Guidelines for the Land Transport of Livestock and further to consign, manage, receive, transport and handle livestock in accordance with any other or additional requirements of animal welfare legislation specific to the jurisdiction in which livestock are consigned, managed, received, transported and handled in the course of the auction process.

CHAPTER THREE - VENDOR WARRANTY FOR CORRECT PRESENTATION AND DECLARATION

26. This chapter applies only in the case of livestock and their companion animals sold at auction for slaughter when the buyer is the slaughterer and the livestock are transported direct from the sale yard to the meatworks at which they are slaughtered. This chapter does not apply if the buyer is a trader who subsequently resells the livestock to a slaughterer. A slaughterer is any person who pays the AMPC Processor levy.
27. The warranty of a vendor is that livestock and their companion animals offered for sale at auction:
 - (a) pass government and other regulatory authority requirements and inspections at the time of slaughter;
 - (b) are of merchantable quality;
 - (c) carry an NLIS device in accordance with State law;
 - (d) in the case where a representation has been made in the pre-sale catalogue that the livestock have particular characteristics or are fit for a particular purpose or market, and such representations are based on information in any document, the livestock will have those characteristics or will be fit for the particular purpose or market; and
 - (e) all information in any document provided by the vendor is true, complete and correct in all material respects.
28. In the event of a breach by the vendor of the vendor's warranty and provided such breach is notified by the buyer to the agent by 5:00pm on the 7th day after the fall of the hammer then the buyer is not liable to pay the portion of the Price of such of the vendor's livestock to which the breach applies.
29. However if the breach by the vendor is such that the livestock are not rejected outright but are instead downgraded then the buyer will pay the value of the livestock at their next highest and best use.
30. In the case of a breach by the vendor of the vendor's warranty then the vendor will also be liable to the buyer for any further losses which the buyer might establish but the buyer will take all reasonable steps in co-operation with the agent and vendor to mitigate both the effect of the breach and the amount of any loss.
31. Where a sentinel animal of a lot tests positive for chemical residue, or foreign material contamination and provided such test is certified and notified as required by these vendor warranty terms, then:
 - (a) the buyer will be entitled to delay payment for the price of all livestock in that lot only; or
 - (b) the vendor has the option, at the vendor's cost, of collecting the companion animals, if allowed by law; or of having the livestock slaughtered in which event the risk of further condemnations will be that of the vendor. Where product integrity is potentially jeopardised, the Processor has the right to refuse slaughter and send the livestock back to the consigning property at the vendor's cost.
32. The auctioneer is liable to the buyer in respect of any breach of the vendor's warranty arising out of:
 - (a) any error, by the auctioneer, of transcription of information from the NVD completed by the vendor to the pre-sale catalogue or the buyers post-sale summary;
 - (b) any failure by the auctioneer to notify the buyer, prior to bidding, of any breach by the vendor of the warranty of the vendor if the buyer establishes that the agent knew of such breach prior to the sale; and
 - (c) any failure by the auctioneer to announce prior to bidding, or disclose in the pre-sale catalogue, that the vendor has failed to provide a NVD that is complete in all material aspects.

CHAPTER FOUR - OWNERS RISK FOR CONDITION OF CATTLE

33. This chapter applies only in the case of cattle and their companion animals sold at auction for slaughter when the buyer is the slaughterer and the cattle are transported direct from the sale yard to the meatworks at which they are slaughtered. This chapter does not apply if the buyer is a trader who subsequently resells cattle to a slaughterer. A slaughterer is any person who pays the AMPC Processor levy.
34. Owners risk reflects the producer's responsibility to provide slaughter cattle for sale that are fit for human consumption. Cattle are fit for human consumption if they are not condemned as unfit by government. Owners risk applies if the condemnation is due to a condition in the animal which the buyer establishes, by the relevant government certificate, existed prior to the fall of the hammer.
35. A buyer with the benefit of owners risk protection is not liable to pay the Price of that animal to the vendor. The buyer remains nevertheless liable for all costs incurred after the fall of the hammer in transport, slaughter, testing and disposal of the animal.
36. Owners risk protection is available to the buyer of cattle to which this chapter applies if all of the following are satisfied:
 - (a) a certificate is issued by government which states the relevant NLIS RFID tag number and PIC, the date of the certificate, the reason for condemnation and that the reason for condemnation existed prior to the fall of the hammer;
 - (b) the certificate is received by the selling agent either in its original form or by fax or electronic communication in the form of data, text or imaging by 5:00pm on the 7th day after the fall of the hammer; and
 - (c) if the condemnation is due to chemical residue the certificate follows testing in a government approved laboratory which establishes maximum residue limits in excess of the Australian limit.
37. Owners risk does not apply, and the buyer must pay for the cattle, if the reason for condemnation is any of bruising, fever, partial condemnation or emaciation.

CHAPTER FIVE - NOTICES REQUIRED BY LEGISLATION

NSW Property, Stock and Business Agents Act 2002 Warnings

Penalties for collusive practices. It is an offence against the Property, Stock and Business Agents Act 2002 for a person to do any of the following as a result of a collusive practice, or to induce or attempt to induce another person by a collusive practice to do any of the following:

- (i) to abstain from bidding; or
- (ii) to bid to a limited extent only; or
- (iii) to do any other act that might prevent free and open competition.

Severe penalties may be imposed on persons convicted of collusive practices.

The auctioneer has the right to make one bid on behalf of the vendor if the auctioneer clearly and precisely announces that fact prior to the sale.

Tasmania Legislation. An auctioneer conducting a public auction must not appear to acknowledge the making of a bid if no bid was made. A person must not participate in collusive practices by way of making or receiving an unlawful promise to abstain from bidding, not to bid except to a limited extent or do any other thing which may prevent free and open competition.

WA Auction Sales Act 1973 s31 NOTICE.

It is an offence to:

- (i) induce or attempt to induce another person to abstain from bidding by means of a promise, expressed or implied, that the other person will have the right to elect to take over as buyer or to toss or draw lots to establish who is to become the owner;
 - (ii) abstain or agree to abstain from bidding as a result of such a promise;
 - (iii) knowingly enter or permit or cause to be entered in the auctioneer's record any name other than that of the actual successful bidder;
 - (iv) enter in the auctioneer's record the name of the buyer other than that of the actual successful bidder; or
 - (v) in the case of successful bidder supply wrong information as to the name of the buyer to the auctioneer or to any person, firm or corporation on whose behalf the sale is conducted.
- The vendor, or any person on behalf of the vendor, or the auctioneer have the right to make no more than three bids.

© FEBRUARY 2017 Australian Livestock & Property Agents Association Limited All rights reserved.

Unauthorised reproduction in whole or in part is an infringement of copyright.

These Livestock Auction Terms & Conditions of Sale are provided to ALPA members as recommended terms and conditions only.

BUYERS INSTRUCTION



NAME _____

ADDRESS _____

P/CODE _____

PHONE _____ MOBILE _____

EMAIL ADDRESS _____

LOTS PURCHASED _____

DESTINATION ADDRESS (FOR PERMIT) _____

BID CARD NO.

NO. OF LOTS PURCHASED

DESTINATION	NLIS PIC										
-------------	----------	--	--	--	--	--	--	--	--	--	--

DELIVERY OWNERS TRANSPORT

CARRIER _____ PICK UP TIME/DATE _____

INSURANCE YES PERIOD REQUIRED _____ NO

INVOICE TO _____

IS REGISTRATION TRANSFER REQUIRED? YES NO

IF YES, NAME & ADDRESS FOR TRANSFER OF REGISTRATION

SIGNED _____ DATE _____

NOTE: This Buyers Instruction Sheet MUST be completed in FULL and SIGNED by the Buyer or their Authorised Representative

MT MARGARET RD



Snapshots from the 2018 'CREAM OF THE CROP' BIMBADEEN SALE



Thank You

Mark, Amanda and family thank you for your interest in the 2019 Bimbadeen Brangus Bull & Female Sale.

We appreciate your attendance, and look forward to seeing results in your herd from your Bimbadeen investments.

The businesses advertising in this catalogue have each played a role in evolution of Bimbadeen - we thank them for their ongoing support.

A great deal of effort and assistance goes into an on-property event - kudos to our family and friends who roll up to assist so ably each year.

We invite you to help celebrate the 80th birthday of Bimbadeen founder, Bruce Burnham, after the sale.



Bull Checklist

- ✓ **FERTILITY TESTED**
> MORPHOLOGY & SCROTAL SIZE
- ✓ **PEDIGREED WITH ABCA**
> REGISTERED (OR CALF RECORDED)
- ✓ **BREEDPLAN EBVS**
> FERTILITY > CARCASE > WEIGHTS
- ✓ **DNA TRAIT TESTED**
> POLL > COAT COLOUR > TENDERNESS
- ✓ **SCANNED**
> RIB > RUMP > IMF > EMA
- ✓ **J-BAS 7**
> ELIGIBLE FOR NT & WA