

**BULL SALE**  
**TUESDAY 6TH AUGUST**  
**1PM**

*Bald Blair Guyra NSW*

Y BALD BLAIR ANGUS Y



*Bull Sale*

*“Helping our clients breed more profitable cattle”*



Sam White 0438 792 140 | [samwhite@baldblair.com.au](mailto:samwhite@baldblair.com.au)

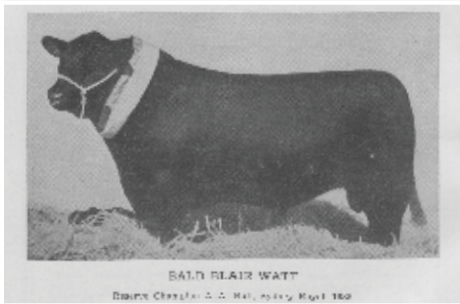
| [www.baldblairangus.com.au](http://www.baldblairangus.com.au)

| [www.baldblairangus.com.au](http://www.baldblairangus.com.au)

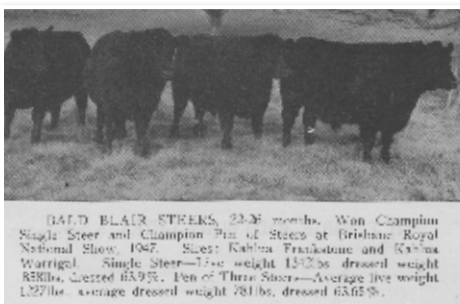


# Y BALD BLAIR ANGUS Y

Paddock to Plate Through Time



BALD BLAIR WATT  
Bobby Christie & A. Macintosh, Royal 1962



BALD BLAIR STEERS, 23-M months. Won Champion Single Steer and Champion Pair of Steers at Brisbane Royal National Show, 1967. Sires: Galbraith Frankston and Karina Warrigell. Single Steer—Live weight 1512 lbs, dressed weight 883 lbs, dressed 63.9%. Pen of Three Steers—Average live weight 1227 lbs, average dressed weight 781 lbs, dressed 63.6%.



# Bald Blair Angus

*Since 1898*

## 2019 Annual Bull Sale

1pm Tuesday 6<sup>th</sup> August 2019,

Bald Blair, Guyra, NSW

### ON OFFER

*A/C Bald Blair Pastoral Co.*

#### 80 HERDBOOK & APR ANGUS BULLS

67 Rising 2 Year Old Angus Bulls

13 Yearling Angus Bulls

**Open Day – Bull Inspection Sunday, 4<sup>th</sup> August 2019, 10am until 2pm**

We will have the bulls in the yards on Sunday, 4th August for paint branding before the sale. Inspections are also welcome prior to sale by appointment, call Sam 0438 792 140. Please join us for dinner after the sale on the evening of the 6<sup>th</sup> August from 6 pm at 'The Coffee Break Café' formally Rafters, New England Highway, Guyra.

#### BALD BLAIR ANGUS

Sam & Kirsty White

Mobile: 0438 792 140

Ph: (02) 6779 2141

Fax: (02) 6779 1800

Email: samwhite@baldblair.com.au

Mrs Elizabeth White

Ph: (02) 6779 1038

Fax: (02) 6779 1800

Email: baldblair@bigpond.com



**AuctionsPlus**  
Buy and Sell stock nationally

#### SELLING AGENTS



**Nick Hall**

Walcha

Ph (02) 6777 2011

Mobile 0427 437 203

**Paul Harris**

Guyra

Mobile 0428 600 510

**Wayne Jenkins**

Guyra

Mobile 0428 293 556

#### AUCTIONEER

Paul Dooley, Mobile 0458 662 646 • paul@pauldooley.com.au

# Welcome to Bald Blair



This is our 47<sup>th</sup> Annual on Property Bull Sale at Bald Blair. On behalf of my family and the team at Bald Blair, I would like to welcome those returning to Bald Blair and those visiting for the first time.

## *The Bald Blair Angus Herd*

The Bald Blair Herd was first recorded in 1908, making the Bald Blair Registered Herd over 110 years of age. On the 9th May 1919 the Angus Society was formalised, hence the 100 year centenary celebrations for the Angus Society of Australia and the registered breed of Angus Cattle in the current year 2019. Our family have had an association with the breed Society from inception. J.C. White, H.F. White, R.H.F. White, G.H. White and myself as a current Director of Angus Australia. This is a significant milestone for the Angus Society, the Angus Breed and all those who have been involved overtime.

This year we will have on offer 80 Angus bulls including 67 Rising two year old bulls, and 13 yearling Angus bulls.

At the time of going to print, we are happy to report that all but four bulls in this years catalogue are fully Parent Verified, the remaining 4 bulls, are Sire Verified and will be fully Parent Verified by sale day. This means that the Bulls offered for sale have been DNA Verified as the son of his Sire and Dam. In addition, all bulls have Single Step genomically enhanced EBV's. The use of both of these available technologies represents our strong commitment to complete data recording with the latest technologies available at this time. It does not diminish the need for recording of Phenotypic data that is also carried out in the herd. Who would have thought this would have been possible 100 years ago.

Bald Blair remains a Seed stock Herd backed by its own Commercial Herd. The commercial herd remains the proving ground for bulls from our seed stock operation. Commercially we remain strongly focused on the Japanese long fed market and the EU grain fed market supplying steers to Rangers Valley Feedlot. We also focus on breeding replacement females for ourselves and our clients, including those chasing breeders for the F1 Wagyu Angus market.

Bald Blair in conjunction with Guyra Veterinary Services has prepared an On-Farm Biosecurity Plan using the Australian Cattle Veterinarians BIO Check. It remains our intent under this plan to continue the ongoing testing of the herd to ensure there is no Johnes Disease in this herd. We are classified JBAS 8.

We look forward to seeing you on sale day.

*Sam, Kirsty, Abbott & Arthur White*

**BALD  BLAIR  
ANGUS**

**ANGUS AUSTRALIA MEMBER 1919 - 2019**

# Sale Information



## **OPEN DAY – BULL INSPECTION SUNDAY, 4<sup>TH</sup> AUGUST 2019, 10AM UNTIL 2PM**

We will have the bulls in the yards on Sunday, 4<sup>th</sup> August for paint branding before the sale. You are more than welcome to come and have a look at them from 10am until 2pm. We will have refreshments and lunch available throughout the day. If you are unable to come on the 4<sup>th</sup> August, inspections are welcome any time prior to the sale by appointment and from 10am on sale day.

### **REBATE**

1. A rebate of 4% is payable to all agents who introduce their clients in writing prior to sale day and attend with or on behalf of their clients, and settle within 7 days.
2. A rebate of 2% is payable to all agents who introduce their clients in writing prior to sale day, but do not attend the sale, and settle within 7 days.

### **NATIONAL CATTLE HEALTH STATEMENT**

Bald Blair has its own Biosecurity Plan prepared in conjunction with our local vet Dr Leisa Brown. We are J-BAS 8 herd which is consistent with the previous NJDMAP MN3 level. We will continue the rigorous testing as in the past to ensure our herd remains free of Johnes disease. See page 46 for our National Health Statement.

### **INSURANCE**

We recommend insuring your new bull, which can be obtained on sale day with Elders Insurance.

### **GST**

The sale is GST EXCLUSIVE. That is if you buy a bull for \$4,000 then you will be invoiced the purchase price of the Bull, that is \$4,000.00 plus 10% GST, which in this case amounts to \$400.00. The total of the invoice will be \$4,400.00.

### **ANIMAL TAG IDENTIFICATION**

*Herd Book and APR Tagging Code* - Those animals with a BLUE TAG are on the Angus Society Herdbook Register, while those with a YELLOW TAG are APR's.

*NLIS Tag* - All Bald Blair Bulls have an NLIS Tag inserted in the right ear. All bulls have a management Tag that corresponds with this NLIS Tag.

### **BUYERS INSTRUCTION INFORMATION**

Buyers, please ensure that the Buyer Instruction Information sheet on the last page of the catalogue is completed in full to avoid any errors with your delivery instructions.

### **REFRESHMENTS**

Morning tea will be available from 9.30am prior to 10am inspection. Lunch is provided and will be available from 12 noon, sale commences at 1pm.

### **DISCLAIMER**

Every care has been taken in the compilation of this catalogue to ensure the accuracy of information supplied. However, no responsibility will be accepted for any errors which may have occurred.



## **BULL BREEDING SOUNDNESS EXAMINATION**

All two year old bulls offered have undergone reproductive physical examination and a semen test. The semen test involved Crush Side Examination for Motility and Specialist Laboratory Examination for Morphology as prescribed by the Australian Cattle Veterinarians Association. The results are printed in the catalogue.

All bulls have received a physical examination and semen test. At the time of printing of this catalogue they had not completed these tests, the results will be available on a supplementary sheet on sale day.

## **BULL STRUCTURAL ASSESSMENT**

An independent structural assessment has been done on our sale draft and our females. This service is provided by Dick Whale, Independent Breeding Services.

## **VACCINATION AND DRENCH REGIME**

*All Bulls have received the following vaccinations and are available for immediate delivery:*

- Tick Fever Vaccinations
- 3 Day Sickness Vaccinations
- Cydectin Pour On (Worms)
- Flukizole C (Fluke)
- 7n1 Vaccine (Leptospirosis)
- Vibriovax (Vibriosis)
- Pestigard Vaccine (Pestivirus)
- They all received booster vaccinations and a pre-sale lice treatment.

We continue to sample our herd for the incidence of Pestivirus exposure, and have undertaken whole herd vaccination with Pestigard on the property Bald Blair to eradicate it from our herd. All Two Year Old and Yearling Bulls, have been tested for the presence of pestivirus, and found to be negative. You can also be comfortable that we have complete herd vaccination program in place. All animals have received a vaccination of the Pestigard vaccine plus a booster vaccination. As with all vaccination programs, for example Lepto and Vibrio it remains the purchasers responsibility to maintain an annual booster program.

## **GENETIC DEFECT ANALYSIS AND MANAGMENT –**

***Arthrogryposis Multiplex (AM) or Curly Calf;*** All AM carrier animals are removed from the seedstock herd. There will be no AM carrier bulls offered for sale. Sale Bulls are denoted AMF or AMFU (i.e. from non-offending pedigrees). We do not use AM carrier bulls in our program.

***Neuropathic Hydrocephalus (NH).*** All NH carrier animals are removed from the seedstock herd. There will be no NH carrier bulls offered for sale. Sale Bulls are denoted NHF or NHFU (i.e. from non-offending pedigrees). We do not use NH carrier bulls in our program.

***Contractural Arachnodactyly (CA; otherwise know as fawn calf).*** All CA carrier animals are removed from the seedstock herd. There will be no CA carrier bulls offered for sale. Sale Bulls are denoted CAF or CAFU (i.e. from non-offending pedigrees). We do not use CA carrier bulls in our program.

***Developmental Duplication (DD).*** In August 2013 this recessive genetic disorder was identified in the breed. All DD carrier animals are removed from the seedstock herd. There will be no DD carrier bulls offered for sale this year.



**Guyra District Veterinary  
Services**  
207 Falconer Street  
GUYRA 2365  
(02) 6779 1173



Sam & Kirsty White  
Bald Blair  
GUYRA NSW 2365

17 June 2019

On the 3<sup>rd</sup>, 5<sup>th</sup> and 13<sup>th</sup> of June 2019, I Dr Leisa Brown of Guyra District Veterinary Services carried out a breeding soundness evaluation on each bull listed in the 2019 'Bald Blair Angus' catalogue. This included:-

- *A physical examination*
- *Examination of the reproductive organs* – Internal palpation, measurement of scrotal circumference and full examination of penis and testicles
- *Semen collection and assessment of gross motility* (using iSperm technology)
- *Semen morphology* – samples were assessed by an accredited morphologist at Australian Veterinary Semen Morphology

Semen morphology has become an integral part of the Veterinary Bull Breeding Soundness Evaluation. It allows assessment of individual sperm for defects that can potentially affect fertilisation and therefore conception. The most serious morphological defects can result in fertilisation of the ovum but not produce a viable embryo. In the paddock the result of this will be failure of that cow to achieve a pregnancy on that cycle. To achieve optimal fertility in a herd the conception rate needs to be 65% per cycle. The ultimate aim of a complete breeding soundness examination is to identify any risk factors that may compromise this.

All bulls have also been tested for pestivirus antigen by ear notch at Swans Veterinary Services and returned a negative result.

Each bull listed in the 2019 Bald Blair catalogue has been found to pass the requirements set by the Australian Cattle Vets Association for a bull breeding examination.

Yours sincerely

Dr. Leisa Brown, BVSc (Hons) N8292  
Guyra District Veterinary Services



## RECESSIVE GENETIC CONDITIONS INFORMATION FOR BULL BUYERS

This is information for bull buyers about the recessive genetic conditions, Arthrogyrosis Multiplex (AM), Hydrocephalus (NH), Contractural Arachnodactyly (CA) and Developmental Duplications (DD).

### **Putting undesirable Genetic Recessive Conditions in perspective**

All animals, including humans, carry single copies (alleles) of undesirable or “broken” genes. In single copy form, these undesirable alleles usually cause no harm to the individual. But when animals carry 2 copies of certain undesirable or “broken” alleles it often results in bad consequences. Advances in genomics have facilitated the development of accurate diagnostic tests to enable the identification and management of numerous undesirable or “broken” genes. Angus Australia is proactive in providing its members and their clients with relevant tools and information to assist them in the management of known undesirable genes and our members are leading the industry in their use of this technology.

***Key point: With today's DNA tools undesirable genetic conditions can be managed!***

### **What are AM, NH, CA and DD?**

AM, NH, CA and DD are all recessive conditions caused by “broken” alleles within the DNA of individual animals. When a calf inherits 2 copies of the AM or NH alleles their development is so adversely affected that they will be still-born.

In other cases, such as CA and DD, calves carrying 2 copies of the broken allele may reach full-term. In such cases the animal may either appear relatively normal, or show physical symptoms that affect their health and/or performance.

***Key point: The number of reported observations of AM, NH, CA and DD calves is very low and there is certainly no need for panic.***

### **How are the conditions inherited?**

Research in the U.S. and Australia indicates that AM, NH, CA and DD are simply inherited recessive conditions. This means that a single gene (or pair of alleles) controls the condition. For this mode of inheritance two copies of the undesirable allele need to be present before the condition is seen; in which case you may get an abnormal calf. A more common example of a trait with a simple recessive pattern of inheritance is black and red coat colour.

Animals with only one copy of the undesirable allele (and one copy of the normal form of the allele) appear normal and are known as “carriers”.

### **What happens when carriers are mated to other animals?**

Carriers, will on average, pass the undesirable allele to a random half (50 %) of their progeny.

When a carrier bull and carrier cow is mated, there is a 25% chance that the resultant calf will inherit two normal alleles, a 50% chance that the mating will result in a carrier (i.e. with just 1 copy of the undesirable allele, and a 25% chance that the calf will inherit two copies of the undesirable gene.



# Recessive Genetic Conditions



If animals tested free of the undesirable gene are mated to carrier animals the condition will not be expressed at all. All calves will appear normal, but approximately half (50%) could be expected to be carriers.

**Key point: For the condition to be expressed the undesirable gene needs to be present on both sides of the pedigree and both the sire and dam need to be a carrier.**

## How is the genetic status of animals reported?

DNA-based diagnostic tests have been developed which can be used to determine whether an individual animal is either a carrier or free of the alleles resulting in AM, NH, CA or DD.

Angus Australia uses advanced software to calculate the probability of (untested) animals to being carriers of AM, NH, CA or DD. The software uses the test results of any relatives in the calculations and the probabilities may change as new results for additional animals become available.

The genetic status of animals is being reported using five categories:

AMF	Tested AM free
AMFU	Based on pedigree AM free – Animal has not been tested
AM__%	__% probability the animal is an AM carrier
AMC	Tested AM-Carrier
AMA	AM-Affected

For NH, CA and DD, simply replace AM in the above table with NH, CA or DD.

Registration certificates and the Angus Australia web-database display these codes. This information is displayed on the animal details page and can be accessed by conducting an “Animal Search” from the Angus Australia website or looking up individual animals listed in a sale catalogue.

**Key point: The genetic status of an animal is subject to change and will be re- analysed and adjusted each week as DNA test results of relatives are received.**

## Implications for Commercial Producers

Your decision on the importance of the genetic condition status of replacement bulls should depend on the genetics of your cow herd (which bulls you previously used) and whether some female progeny will be retained or sold as breeders.

Most Angus breeders are proactive and transparent in managing known genetic conditions, endeavouring to provide the best information available. The greatest risk to the commercial sector from undesirable genetic recessive conditions comes from unregistered bulls with unknown genetic background. The genetic condition testing that Angus Australia seedstock producers are investing in provides buyers of registered Angus bulls with unmatched quality assurance.

For further information contact Angus Australia’s Breed Development and Innovation Manager at (02) 6773 4602.



## UNDERSTANDING ANGUS BREEDPLAN EBVs

### What is Angus BREEDPLAN?

Angus BREEDPLAN is the genetic evaluation program adopted by Angus Australia for Angus and Angus influenced beef cattle. Angus BREEDPLAN uses Best Linear Unbiased Prediction (BLUP) technology to produce Estimated Breeding Values (EBVs) of recorded cattle for a range of important production traits (e.g. weight, carcass, fertility).

Angus BREEDPLAN includes pedigree, performance and genomic information from the Angus Australia and New Zealand Angus Association databases to evaluate the genetics of animals across Australia and New Zealand.

Angus BREEDPLAN analyses are conducted by the Agricultural Business Research Institute (ABRI), using software developed by the Animal Genetics and Breeding Unit (AGBU), a joint institute of NSW Agriculture and the University of New England. Ongoing BREEDPLAN research and development is supported by Meat and Livestock Australia.

### What is an EBV?

An animal's breeding value can be defined as its genetic merit for each trait. While it is not possible to determine an animal's true breeding value, it is possible to estimate it. These estimates of an animal's true breeding value are called EBVs (Estimated Breeding Values).

### Using EBVs to Compare the Genetics of Two Animals

Angus BREEDPLAN EBVs can be used to estimate the expected difference in the genetics of two animals, with the expected difference equating to half the difference in the EBVs of the animals, all other things being equal (e.g. they are joined to the same animal/s).

For example, a bull with a 200 Day Growth EBV of +60 would be expected to produce progeny that are, on average, 10 kg heavier at 200 days of age than a bull with a 200 Day Growth EBV of +40 kg (i.e. 20 kg difference between the sire's EBVs, then halved as the sire only contributes half the genetics).

Or similarly, a bull with an IMF EBV of +3.0 would be expected to produce progeny with on average, 1% more intramuscular fat in a 400 kg carcass than a bull with a IMF EBV of +1.0 (i.e. 2% difference between the sire's EBVs, then halved as the sire only contributes half the genetics).

### Using EBVs to Benchmark an Animal's Genetics with the Breed

EBVs can also be used to benchmark an animal's genetics relative to the genetics of other Angus or Angus infused animals in Australia and New Zealand.

To benchmark an animal's genetics relative to other Angus animals, an animal's EBV can be compared to:

- ◆ the breed average EBV
- ◆ the percentile table

The current breed average EBV and percentile table is provided in these explanatory notes.

### Considering Accuracy

An accuracy value is published in association with each EBV, which is usually displayed as a percentage value immediately below the EBV.

The accuracy value provides an indication of the reliability of the EBV in estimating the animal's genetics (or true breeding value), and is an indication of the amount of information that has been used in the calculation of the EBV.

EBVs with accuracy values below 50% should be considered as preliminary or of low accuracy, 50- 74% as of medium accuracy, 75-90% of medium to high accuracy, and 90% or greater as high accuracy.

### Description of Angus BREEDPLAN EBVs

EBVs are calculated for a range of traits within Angus BREEDPLAN, covering calving ease, growth, fertility, maternal performance, carcass merit, feed efficiency and structural soundness. A description of each EBV included in this sale catalogue is provided on the following pages.

BIRTH		
<b>Calving Ease Direct</b>	(%)	Genetic differences in the ability of a sire's calves to be born unassisted from 2 year old heifers.
<b>Calving Ease Daughters</b>	(%)	Genetic differences in the ability of a sire's daughters to calve unassisted at 2 years of age.
<b>Gestation Length</b>	days	Genetic differences between animals in the length of time from the date of conception to the birth of the calf.
<b>Birth Weight</b>	kg	Genetic differences between animals in calf weight at birth.
GROWTH		
<b>200 Day Growth</b>	kg	Genetic differences between animals in live weight at 200 days of age due to genetics for growth.
<b>400 Day Weight</b>	kg	Genetic differences between animals in live weight at 400 days of age.
<b>600 Day Weight</b>	kg	Genetic differences between animals in live weight at 600 days of age.
<b>Mature Cow Weight</b>	kg	Genetic differences between animals in live weight of cows at 5 years of age.
<b>Milk</b>	kg	Genetic differences between animals in live weight at 200 days of age due to the maternal contribution of its dam.
FERTILITY		
<b>Days to Calving</b>	kg	Genetic differences between animals in the time from the start of the joining period (i.e. when the female is introduced to a bull) until subsequent calving.
<b>Scrotal Size</b>	cm	Genetic differences between animals in scrotal circumference at 400 days of age.
CARCASE		
<b>Carcase Weight</b>	kg	Genetic differences between animals in hot standard carcase weight at 750 days of age.
<b>Eye Muscle Area</b>	cm <sup>2</sup>	Genetic differences between animals in eye muscle area at the 12/13th rib site in a 400 kg carcase.
<b>Rib Fat</b>	mm	Genetic differences between animals in fat depth at the 12/13th rib site in a 400 kg carcase.
<b>Rump Fat</b>	mm	Genetic differences between animals in fat depth at the P8 rump site in a 400 kg carcase.
<b>Retail Beef Yield</b>	%	Genetic differences between animals in boned out saleable meat from a 400 kg carcase.
<b>Intramuscular Fat</b>	%	Genetic differences between animals in intramuscular fat (marbling) at the 12/13th rib site in a 400 kg carcase.

FEED EFFICIENCY		
<b>Net Feed Intake (Post Weaning)</b>	kg/day	Genetic differences between animals in feed intake at a standard weight and rate of weight gain when animals are in a growing phase.
<b>Net Feed Intake (Feedlot)</b>	kg/day	Genetic differences between animals in feed intake at a standard weight and rate of weight gain when animals are in a feedlot finishing phase.
TEMPERAMENT		
<b>Docklity</b>	%	Genetic differences between animals in temperament.
STRUCTURE		
<b>Front Feet Angle</b>	%	Genetic differences between animals in desirable front feet angle (strength of pastern, depth of heel).
<b>Front Feet Claw Set</b>	%	Genetic differences between animals in desirable front feet claw set structure (shape and evenness of claw).
<b>Rear Feet Angle</b>	%	Genetic differences between animals in desirable rear feet angle (strength of pastern, depth of heel).
<b>Rear Leg Hind View</b>	%	Genetic differences between animals in desirable rear leg structure when viewed from behind.
<b>Rear Leg Side View</b>	%	Genetic differences between animals in desirable rear leg structure when viewed from the side.
SELECTION INDEXES		
<b>Angus Breeding Index</b>	\$	Genetic differences between animals in net profitability per cow joined in a typical commercial self replacing herd using Angus bulls. This selection index is not specific to a particular production system or market end-point, but identifies animals that will improve overall profitability in the majority of commercial grass and grain finishing beef production systems.
<b>Domestic Index</b>	\$	Genetic differences between animals in net profitability per cow joined in a commercial self replacing herd targeting the domestic supermarket trade.
<b>Heavy Grain Index</b>	\$	Genetic differences between animals in net profitability per cow joined in a commercial self replacing herd targeting pasture grown steers with a 200 day feedlot finishing period for the grain fed high quality, highly marbled markets.
<b>Heavy Grass Index</b>	\$	Genetic differences between animals in net profitability per cow joined in a commercial self replacing herd targeting pasture finished steers.

# BREEDPLAN Percentiles



## JULY 2019 ANGUS AUSTRALIA BREEDPLAN REFERENCE TABLES

### BREED AVERAGE EBVs

Brd Avg	Calving Ease		Birth		Growth				Fertility			Carcass			Other			Structure				Selection Indexes						
	CEDir	CEDrs	GL	BW	200	400	600	MCW	Milk	SS	DTC	CWT	EMA	RIB	P8	RBV	IMF	NFI-F	DOC	FA	FC	RA	RH	RS	ABI	DOM	GRN	GRS
	+0.2	+0.4	-4.0	+4.3	+4.4	+81	+106	+91	+15	+1.8	-4.2	+59	+5.1	+0.0	-0.2	+0.4	+1.7	+0.18	+4	+0	-1	-2	-0.4	-0.3	+1.14	+1.09	+1.19	+1.12

\* Breed average represents the average EBV of all 2017 drop Angus and Angus influenced animals analysed in the July 2019 Angus Australia BREEDPLAN genetic evaluation.

### PERCENTILE BANDS TABLE

% Band	Calving Ease		Birth		Growth				Fertility			Carcass			Other			Structure				Selection Indexes						
	Less	More	Shorter	Longer	Lighter	Lighter	Lighter	Lighter	Lighter	Lighter	Lighter	Lighter	Lighter	Lighter	Lighter	Lighter	Lighter	Lighter	Lighter	Lighter	Lighter	Lighter	Lighter	Lighter	Lighter	Lighter	Lighter	Lighter
1%	+5.0	+4.5	-9.7	+0.4	+61	+109	+146	+140	+26	+3.8	-8.9	+85	+11.0	+3.1	+3.2	+2.6	+4.0	-0.48	+31	+20	+23	+14	+4.6	+0.5	+157	+135	+182	+145
5%	+3.9	+3.5	-7.8	+1.7	+56	+100	+133	+124	+22	+3.1	-7.6	+77	+9.0	+2.0	+2.1	+1.9	+3.3	-0.30	+24	+17	+17	+10	+3.2	+0.5	+145	+128	+165	+135
10%	+3.2	+2.9	-6.8	+2.3	+54	+96	+127	+115	+20	+2.8	-6.9	+73	+8.0	+1.5	+1.6	+1.6	+3.0	-0.19	+19	+13	+14	+8	+2.6	+0.5	+138	+124	+156	+130
15%	+2.8	+2.5	-6.2	+2.7	+52	+93	+123	+110	+19	+2.6	-6.4	+71	+7.4	+1.2	+1.2	+1.3	+2.7	-0.12	+16	+11	+12	+6	+2.1	+0.4	+134	+121	+149	+127
20%	+2.4	+2.2	-5.8	+3.0	+51	+91	+119	+106	+19	+2.4	-6.0	+69	+7.0	+1.0	+0.9	+1.2	+2.5	-0.07	+14	+9	+10	+5	+1.8	+0.4	+131	+119	+143	+124
25%	+2.0	+1.9	-5.4	+3.2	+49	+89	+117	+103	+18	+2.3	-5.6	+67	+6.6	+0.8	+0.7	+1.0	+2.3	-0.02	+12	+8	+9	+4	+1.4	+0.4	+128	+117	+139	+122
30%	+1.7	+1.6	-5.1	+3.5	+48	+87	+114	+100	+17	+2.2	-5.3	+66	+6.3	+0.6	+0.5	+0.9	+2.2	+0.02	+10	+7	+7	+3	+1.2	+0.4	+125	+115	+135	+120
35%	+1.3	+1.3	-4.8	+3.7	+48	+86	+112	+98	+17	+2.1	-5.0	+64	+5.9	+0.4	+0.3	+0.8	+2.1	+0.07	+8	+5	+5	+1	+0.8	+0.3	+122	+114	+131	+118
40%	+1.0	+1.0	-4.5	+3.9	+47	+84	+110	+95	+16	+2.0	-4.8	+63	+5.6	+0.3	+0.2	+0.7	+1.9	+0.11	+7	+4	+4	+0	+0.5	+0.3	+120	+112	+127	+116
45%	+0.7	+0.8	-4.2	+4.1	+46	+83	+108	+93	+16	+1.9	-4.5	+62	+5.4	+0.1	+0.0	+0.6	+1.8	+0.15	+5	+3	+2	-1	+0.3	+0.3	+118	+111	+124	+114
50%	+0.4	+0.5	-4.0	+4.3	+45	+81	+106	+91	+15	+1.8	-4.3	+60	+5.1	+0.0	-0.2	+0.5	+1.7	+0.18	+4	+2	+1	-2	+0.1	+0.2	+115	+109	+120	+112
55%	+0.1	+0.3	-3.7	+4.5	+44	+80	+104	+88	+15	+1.7	-4.0	+59	+4.8	-0.1	-0.3	+0.3	+1.6	+0.22	+3	+1	-1	-3	-0.3	+0.1	+113	+108	+117	+111
60%	-0.2	+0.0	-3.5	+4.7	+43	+79	+102	+86	+14	+1.6	-3.8	+57	+4.5	-0.3	-0.5	+0.2	+1.4	+0.26	+1	-1	-3	-4	-0.7	+0.0	+110	+106	+113	+109
65%	-0.6	-0.2	-3.2	+4.9	+42	+77	+100	+84	+14	+1.5	-3.5	+56	+4.2	-0.4	-0.7	+0.1	+1.3	+0.30	+0	-3	-5	-5	-1.1	-0.1	+108	+105	+109	+107
70%	-0.9	-0.5	-2.9	+5.1	+41	+75	+97	+81	+13	+1.4	-3.2	+54	+3.9	-0.6	-0.9	+0.0	+1.2	+0.34	-2	-4	-8	-6	-1.5	-0.3	+105	+103	+105	+105
75%	-1.3	-0.9	-2.6	+5.3	+40	+74	+95	+78	+13	+1.3	-2.9	+52	+3.6	-0.8	-1.1	-0.1	+1.0	+0.38	-3	-6	-11	-7	-1.9	-0.5	+102	+101	+101	+102
80%	-1.8	-1.3	-2.3	+5.6	+39	+72	+92	+75	+12	+1.1	-2.5	+50	+3.2	-1.0	-1.3	-0.3	+0.8	+0.43	-5	-9	-13	-9	-2.2	-0.8	+98	+99	+96	+100
85%	-2.4	-1.7	-1.9	+5.9	+37	+69	+89	+71	+11	+1.0	-2.1	+47	+2.8	-1.2	-1.5	-0.4	+0.6	+0.49	-7	-12	-17	-11	-2.9	-1.1	+94	+96	+90	+96
90%	-3.2	-2.3	-1.4	+6.3	+35	+66	+84	+66	+10	+0.8	-1.5	+46	+2.2	-1.5	-1.9	-0.7	+0.4	+0.55	-9	-17	-21	-14	-3.9	-1.7	+89	+87	+82	+92
95%	-4.5	-3.3	-0.5	+6.9	+31	+60	+77	+58	+9	+0.5	+0.5	+42	+1.4	-1.9	-2.4	-1.0	+0.1	+0.66	-13	-26	-25	-19	-5.8	-2.6	+79	+89	+68	+84
99%	-7.4	-5.2	+1.3	+8.1	+25	+50	+60	+41	+6	-0.1	+1.5	+25	-0.1	-2.8	-3.5	-1.7	-0.4	+0.89	-20	-35	-32	-27	-10.3	-5.2	+53	+72	+33	+64

\* The percentile bands represent the distribution of EBVs across the 2017 drop Angus and Angus influenced animals analysed in the July 2019 Angus Australia BREEDPLAN genetic evaluation.



# Let IBMS tick all boxes for you

## REVIEW AND DESIGN BREEDING PROGRAMS

- Breeding goals and markets targeted
- Breedplan and EBV's explained and tailored to your breeding aims
- Genetic defects (AM, NH, and others) explained in relation to the potential impact they may have on your herd
- Gene markers and molecular science understood.  
Taking your cattle breeding enterprise into the future

## ASSISTING BULL SELECTION AND PURCHASES

- Selecting herd sires at a seedstock sales.
- Selecting the bulls best suited to your breeding program
- Do you know how much you should be paying for these bulls

## ANNUAL HERD AND BULL ASSESSMENT

- Your breeders and herd sires accurately assessed for structural soundness.
- Non performing cows in your herd identified

## ADD VALUE TO YOUR BREEDING HERD

- Similar prices achieved for your surplus to requirement females as your feedlot or grass finished steers.
- A beef herd with optimum returns and minimal input costs



*"Your Guide Through the Beef Breeding Maze"*

PH: 0427 697 968 • FAX: 03 5721 5839

EMAIL: [rgwhale@bigpond.com](mailto:rgwhale@bigpond.com)

# Bald Blair Reference Sires



## SYDGEN BLACK PEARL 2006<sup>PV</sup> HBR

BORN: 1/01/2012 GENETIC STATUS: AMF,CAF,DDF,NHF,MAF SOCIETY ID: USA17236055  
 S: SCR PROMISE 4042 S: CONNEALY FORWARD  
 SIRE: SYDGEN TRUST 6228<sup>#</sup> DAM: SYDGEN ANITA 8611<sup>#</sup>  
 D: SYDGEN FOREVER LADY 4413 D: THREE TREES ANITA 5133

### JULY 2019 ANGUS AUSTRALIA BREEDPLAN

CED	CEM	GL	BW	200 D	400 D	600 D	MCW	MILK	DC	SS	CWT	EMA	RIB	RUMP	RBY%	IMF%
+3.8	+5.9	-7.9	+3.1	+51	+87	+120	+75	+20	-3.5	+1.4	+78	+8.2	+0.9	-1.0	+0.7	+1.9
95%	88%	99%	99%	99%	99%	99%	98%	97%	68%	98%	94%	93%	93%	92%	90%	91%

### \$ INDEX VALUES

Angus Breeding	Domestic Index	Heavy Grain Index	Heavy Grass Index
+\$133	+\$121	+\$136	+\$132

Traits observed: Genomics(CE,S-Step)

A proven sire with many progeny in the Bald Blair Herd.

## H P C A PROCEED<sup>#</sup> HBR

BORN: 12/02/2011 GENETIC STATUS: AMF,CAF,DDF,NHF,MAF SOCIETY ID: USA16956101  
 S: G A R PREDESTINED S: B/R AMBUSH 28  
 SIRE: G A R PROGRESS<sup>SV</sup> DAM: G A R 28 AMBUSH L119<sup>#</sup>  
 D: G A R OBJECTIVE 2345 D: G A R PREDESTINED N05

### JULY 2019 ANGUS AUSTRALIA BREEDPLAN

CED	CEM	GL	BW	200 D	400 D	600 D	MCW	MILK	DC	SS	CWT	EMA	RIB	RUMP	RBY%	IMF%
-2.1	+2.1	-5.9	+4.0	+51	+90	+114	+93	+19	-4.8	+1.6	+64	+7.6	-0.8	-1.3	+0.3	+4.8
85%	72%	98%	98%	97%	97%	96%	92%	87%	56%	95%	87%	88%	88%	85%	82%	85%

### \$ INDEX VALUES

Angus Breeding	Domestic Index	Heavy Grain Index	Heavy Grass Index
+\$143	+\$125	+\$176	+\$126

Traits observed: Genomics(CE,S-Step)

A proven high Merit Carcase sire, IMF in top 1% of breed.

## JMB TRACTION 292<sup>PV</sup> HBR

BORN: 11/03/2012 GENETIC STATUS: AMF,CAF,DDF,NHF,MAF,OHF,OSF SOCIETY ID: USA17262374  
 S: GDAR GAME DAY 449 S: S A V 004 PREDOMINANT 4438  
 SIRE: SITZ TOP GAME 561X<sup>#</sup> DAM: JMB EMULOTA 013<sup>#</sup>  
 D: SITZ PRIDE 88T D: BAR S EMULOTA 5426

### JULY 2019 ANGUS AUSTRALIA BREEDPLAN

CED	CEM	GL	BW	200 D	400 D	600 D	MCW	MILK	DC	SS	CWT	EMA	RIB	RUMP	RBY%	IMF%
-2.1	-2.2	+0.6	+4.4	+59	+108	+137	+88	+24	-4.1	+2.2	+71	+10.4	-0.9	-1.6	+2.0	+1.1
81%	66%	99%	98%	98%	98%	97%	90%	87%	46%	96%	87%	88%	87%	85%	80%	86%

### \$ INDEX VALUES

Angus Breeding	Domestic Index	Heavy Grain Index	Heavy Grass Index
+\$135	+\$128	+\$136	+\$136

Traits observed: Genomics(CE,S-Step)

An outcross pedigree with great EMA.

## LD CAPITALIST 316<sup>SV</sup> HBR

BORN: 26/01/2013 GENETIC STATUS: AMF,CAF,DDF,NHF,MAF SOCIETY ID: USA17666102  
 S: S A V FINAL ANSWER 0035 S: C A FUTURE DIRECTION 5321  
 SIRE: CONNEALY CAPITALIST 028<sup>#</sup> DAM: LD DIXIE ERICA 2053<sup>#</sup>  
 D: PRIDES PITA OF CONANGA 8821 D: LD DIXIE ERICA OAR 0853

### JULY 2019 ANGUS AUSTRALIA BREEDPLAN

CED	CEM	GL	BW	200 D	400 D	600 D	MCW	MILK	DC	SS	CWT	EMA	RIB	RUMP	RBY%	IMF%
+4.8	+3.2	-3.8	+1.8	+53	+98	+116	+68	+18	-2.4	+1.5	+75	+8.4	+2.0	+1.4	-0.3	+2.0
83%	52%	99%	99%	98%	95%	87%	82%	76%	46%	86%	83%	82%	82%	77%	75%	78%

### \$ INDEX VALUES

Angus Breeding	Domestic Index	Heavy Grain Index	Heavy Grass Index
+\$125	+\$126	+\$121	+\$129

Traits observed: Genomics(CE,S-Step)

A Calving Ease outcross pedigree used in the Bald Blair Herd

## MUSGRAVE BIG SKY<sup>#</sup> HBR

BORN: 16/01/2013 GENETIC STATUS: AMF,CAF,DDF,NHF,MAF SOCIETY ID: USA17614813  
 S: CONNEALY CONSENSUS S: S A F 598 BANDO 5175  
 SIRE: CONNEALY EARNAN 076E<sup>PV</sup> DAM: SAV PRIMROSE 7861<sup>#</sup>  
 D: BRAZILA OF CONANGA 3991 839A D: S A V PRIMROSE 8244

### JULY 2019 ANGUS AUSTRALIA BREEDPLAN

CED	CEM	GL	BW	200 D	400 D	600 D	MCW	MILK	DC	SS	CWT	EMA	RIB	RUMP	RBY%	IMF%
-0.8	+4.3	-5.1	+3.8	+54	+96	+121	+96	+9	-5.2	+1.4	+63	+5.6	-0.5	+0.3	+0.1	+1.2
90%	81%	99%	99%	98%	98%	98%	96%	93%	54%	98%	90%	90%	89%	86%	83%	87%

### \$ INDEX VALUES

Angus Breeding	Domestic Index	Heavy Grain Index	Heavy Grass Index
+\$122	+\$118	+\$120	+\$123

Traits observed: Genomics(S-Step)

Outcross pedigree in Bald Blair Herd

## MUSGRAVE MEDIATOR<sup>PV</sup> HBR

BORN: 22/01/2015 GENETIC STATUS: AMF,CAF,DDF,NHF,DWF,MAF,OSF SOCIETY ID: USA18129638  
 S: KOUPALS B&B IDENTITY S: MUSGRAVE BOULDER  
 SIRE: MUSGRAVE AVIATOR<sup>SV</sup> DAM: MUSGRAVE BARBARA LASS 273<sup>#</sup>  
 D: MCATL FOREVER LADY 1429-138 D: MCATL BARBARA LASS 931-719

### JULY 2019 ANGUS AUSTRALIA BREEDPLAN

CED	CEM	GL	BW	200 D	400 D	600 D	MCW	MILK	DC	SS	CWT	EMA	RIB	RUMP	RBY%	IMF%
+3.3	+2.4	-0.7	+0.3	+43	+83	+90	+56	+22	-3.9	+2.0	+61	+3.6	-1.0	-0.5	+0.6	+2.2
66%	36%	97%	97%	93%	94%	89%	81%	73%	40%	92%	81%	81%	83%	78%	75%	80%

### \$ INDEX VALUES

Angus Breeding	Domestic Index	Heavy Grain Index	Heavy Grass Index
+\$107	+\$118	+\$108	+\$107

Traits observed: Genomics(CE,S-Step)

Outcross pedigree in Bald Blair Herd

# Bald Blair Reference Sires



## WR JOURNEY-1X74<sup>PV</sup> HBR

**BORN:** 19/12/2010 **GENETIC STATUS:** AMF,CAF,DDF,NHF,MAF **SOCIETY ID:** USA16924332  
 S: C A FUTURE DIRECTION 5321 **S:** G A R NEW DESIGN 5050  
**SIRE:** B/R FUTURE DIRECTION 4268<sup>SV</sup> **DAM:** 2 BAR 5050 NEW DESIGN 7831<sup>#</sup>  
 D: B/R RUBY 9114 **D:** 2 BAR 036 LADY 0107

### JULY 2019 ANGUS AUSTRALIA BREEDPLAN

CED	CEM	GL	BW	200 D	400 D	600 D	MCW	MILK	DC	SS	CWT	EMA	RIB	RUMP	RBY%	IMF%
+3.2	+1.4	-9.8	+2.1	+46	+73	+98	+67	+18	-3.0	+0.0	+63	+10.0	-1.2	-4.0	+2.6	+1.7
74%	58%	97%	96%	94%	94%	93%	86%	82%	56%	92%	84%	85%	85%	81%	79%	83%

### \$ INDEX VALUES

Angus Breeding	Domestic Index	Heavy Grain Index	Heavy Grass Index
+\$115	+\$114	+\$118	+\$114

*Traits observed: Genomics(CE,S-Step)  
 A calving ease sire used in the Bald Blair Herd.*

## RENNYLEA L519<sup>PV</sup> HBR

**BORN:** 20/08/2015 **GENETIC STATUS:** AMFU,CAFU,DDFU,NHFU **SOCIETY ID:** NORL519  
 S: G A R INGENUITY **S:** TE MANIA BERKLEY B1  
**SIRE:** H P C A INTENSITY<sup>#</sup> **DAM:** RENNYLEA H414<sup>SV</sup>  
 D: G A R PREDESTINED 287L **D:** RENNYLEA C310

### JULY 2019 ANGUS AUSTRALIA BREEDPLAN

CED	CEM	GL	BW	200 D	400 D	600 D	MCW	MILK	DC	SS	CWT	EMA	RIB	RUMP	RBY%	IMF%
+2.8	+1.5	-6.9	+3.9	+53	+98	+123	+114	+22	-8.7	+1.3	+72	+7.9	+1.0	+1.0	-0.6	+3.9
73%	56%	98%	97%	95%	87%	88%	81%	71%	52%	81%	77%	72%	75%	73%	70%	71%

### \$ INDEX VALUES

Angus Breeding	Domestic Index	Heavy Grain Index	Heavy Grass Index
+\$157	+\$133	+\$186	+\$141

*Traits observed: BWT,200WT,400WT(x2),600WT,SC,Scan(EMA,Rib,Rump,IMF),DOC,Genomics(CE,S-Step)  
 Purchased by Booroomooka Angus Stud in 2017, Bald Blair has used this sire in the 2017 and 2018 breeding season.*

## BALD BLAIR RIGHT ANSWER J94<sup>PV</sup> HBR

**BORN:** 23/07/2013 **GENETIC STATUS:** AMFU,CAFU,DDFU,NHFU **SOCIETY ID:** NBBJ94  
 S: S A V FINAL ANSWER 0035 **S:** SITZ NEW DESIGN 458N  
**SIRE:** CONNEALY RIGHT ANSWER 746<sup>#</sup> **DAM:** BALD BLAIR G152<sup>PV</sup>  
 D: HAPPY DELL OF CONANGA 262 **D:** BALD BLAIR Z61

### JULY 2019 ANGUS AUSTRALIA BREEDPLAN

CED	CEM	GL	BW	200 D	400 D	600 D	MCW	MILK	DC	SS	CWT	EMA	RIB	RUMP	RBY%	IMF%
+1.8	+2.1	-1.9	+3.5	+67	+118	+152	+104	+29	-0.3	+3.3	+91	+2.9	+0.4	-1.2	+0.4	+1.6
73%	56%	97%	95%	93%	93%	94%	89%	81%	59%	89%	88%	87%	89%	87%	85%	86%

### \$ INDEX VALUES

Angus Breeding	Domestic Index	Heavy Grain Index	Heavy Grass Index
+\$129	+\$126	+\$128	+\$133

*Traits observed: GL,BWT,200WT,400WT,SC,Scan(EMA,Rib,Rump,IMF),Genomics(CE,S-Step)  
 A proven growth sire, out of the Bald Blair Herd.*

## BALD BLAIR RIGHT ANSWER J9<sup>PV</sup> HBR

**BORN:** 14/07/2013 **GENETIC STATUS:** AMFU,CAFU,DDFU,NHFU **SOCIETY ID:** NBBJ9  
 S: S A V FINAL ANSWER 0035 **S:** BALD BLAIR DEBONAIR D34  
**SIRE:** CONNEALY RIGHT ANSWER 746<sup>#</sup> **DAM:** BALD BLAIR G123<sup>PV</sup>  
 D: HAPPY DELL OF CONANGA 262 **D:** BALD BLAIR C104

### JULY 2019 ANGUS AUSTRALIA BREEDPLAN

CED	CEM	GL	BW	200 D	400 D	600 D	MCW	MILK	DC	SS	CWT	EMA	RIB	RUMP	RBY%	IMF%
-0.2	+0.2	-9.0	+3.9	+58	+98	+123	+98	+22	-3.4	+2.2	+65	+7.8	-0.1	-0.7	+1.7	+1.0
72%	54%	93%	92%	91%	92%	93%	86%	75%	49%	80%	77%	78%	80%	77%	73%	76%

### \$ INDEX VALUES

Angus Breeding	Domestic Index	Heavy Grain Index	Heavy Grass Index
+\$119	+\$120	+\$114	+\$122

*Traits observed: GL,BWT,200WT,400WT,600WT,SC,Scan(EMA,Rib,Rump,IMF),Genomics(CE,S-Step)  
 A proven Calving Ease sire out of the Bald Blair Herd.*

## BALD BLAIR KEEGAN K279<sup>PV</sup> APR

**BORN:** 27/08/2014 **GENETIC STATUS:** AMFU,CAFU,DDFU,NHFU **SOCIETY ID:** NBBK279  
 S: BALD BLAIR DEBONAIR D34 **S:** SITZ JACKSON 431T  
**SIRE:** BALD BLAIR DAVID G105<sup>PV</sup> **DAM:** BALD BLAIR G7<sup>PV</sup>  
 D: BALD BLAIR D171 **D:** BALD BLAIR E45

### JULY 2019 ANGUS AUSTRALIA BREEDPLAN

CED	CEM	GL	BW	200 D	400 D	600 D	MCW	MILK	DC	SS	CWT	EMA	RIB	RUMP	RBY%	IMF%
-5.4	-2.4	-3.1	+7.9	+59	+104	+152	+149	+12	-4.4	+2.9	+62	+7.1	+0.2	+2.5	-0.1	+3.3
66%	44%	89%	89%	85%	85%	87%	79%	66%	47%	80%	74%	72%	76%	73%	69%	72%

### \$ INDEX VALUES

Angus Breeding	Domestic Index	Heavy Grain Index	Heavy Grass Index
+\$150	+\$115	+\$175	+\$138

*Traits observed: BWT,200WT,400WT,600WT,SC,Scan(EMA,Rib,Rump,IMF),DOC,Genomics(CE,S-Step)  
 A very high growth G105 son.*

## BALD BLAIR JIM JIM J140<sup>PV</sup> HBR

**BORN:** 29/07/2013 **GENETIC STATUS:** AMF,CAFU,DDF,NHFU **SOCIETY ID:** NBBJ140  
 S: ARDROSSAN EQUATOR A241 **S:** BALD BLAIR RIGHT TIME D84  
**SIRE:** BOOROOMOOKA FRANKEL F510<sup>PV</sup> **DAM:** BALD BLAIR F214<sup>PV</sup>  
 D: BOOROOMOOKA TRACEY Z5 **D:** BALD BLAIR Z45

### JULY 2019 ANGUS AUSTRALIA BREEDPLAN

CED	CEM	GL	BW	200 D	400 D	600 D	MCW	MILK	DC	SS	CWT	EMA	RIB	RUMP	RBY%	IMF%
+1.7	-3.0	-4.0	+4.7	+51	+85	+121	+101	+12	-5.7	+2.7	+58	+8.2	+1.3	+1.5	+1.1	+1.8
67%	52%	86%	89%	84%	85%	87%	80%	69%	50%	84%	74%	73%	75%	73%	69%	71%

### \$ INDEX VALUES

Angus Breeding	Domestic Index	Heavy Grain Index	Heavy Grass Index
+\$137	+\$118	+\$144	+\$133

*Traits observed: GL,BWT,200WT,400WT,600WT,SC,Scan(EMA,Rib,Rump,IMF),Genomics(CE,S-Step)*



# Bald Blair Reference Sires



## BALD BLAIR BLACK PEARL L52<sup>PV</sup> APR

**BORN:** 16/07/2015 **GENETIC STATUS:** AMFU,CAFU,DDFU,NHFU **SOCIETY ID:** NBBL52  
 S: SYDGEN TRUST 6228 S: NARRANGULLEN 1407 Z567  
**SIRE:** SYDGEN BLACK PEARL 2006<sup>PV</sup> **DAM:** BALD BLAIR E148<sup>PV</sup>  
 D: SYDGEN ANITA 8611 D: BALD BLAIR C8

### JULY 2019 ANGUS AUSTRALIA BREEDPLAN

CED	CEM	GL	BW	200 D	400 D	600 D	MCW	MILK	DC	SS	CWT	EMA	RIB	RUMP	RBV%	IMF%
+5.8	+5.9	-10.1	-0.3	+44	+76	+103	+79	+18	-3.4	+0.7	+65	+5.4	-0.3	-1.1	-0.3	+2.7
67%	53%	85%	83%	79%	78%	80%	76%	68%	46%	78%	70%	67%	71%	68%	65%	66%

### \$ INDEX VALUES

Angus Breeding	Domestic Index	Heavy Grain Index	Heavy Grass Index
+\$116	+\$109	+\$123	+\$114

Traits observed: GL,CE,BWT,200WT,400WT,SC,Scan(EMA,Rib,Rump),DOC,Genomics(CE,S-Step)

## ALPINE JUSTICE J108<sup>SV</sup> HBR

**BORN:** 28/08/2013 **GENETIC STATUS:** AMFU,CAFU,DDF,NHFU **SOCIETY ID:** CGKJ108  
 S: TE MANIA BERKLEY B1 S: LAWSONS DINKY-DI Z191  
**SIRE:** TE MANIA EMPEROR E343<sup>PV</sup> **DAM:** ALPINE ELANOUR E191<sup>#</sup>  
 D: TE MANIA LOWAN Z74 D: ALPINE WILCOOLA C105

### JULY 2019 ANGUS AUSTRALIA BREEDPLAN

CED	CEM	GL	BW	200 D	400 D	600 D	MCW	MILK	DC	SS	CWT	EMA	RIB	RUMP	RBV%	IMF%
-0.2	+1.2	-5.7	+6.2	+57	+97	+127	+124	+8	-6.6	-0.9	+68	+2.1	+1.0	-0.8	-0.9	+3.0
72%	60%	95%	95%	91%	90%	90%	83%	73%	58%	85%	78%	76%	78%	76%	73%	74%

### \$ INDEX VALUES

Angus Breeding	Domestic Index	Heavy Grain Index	Heavy Grass Index
+\$132	+\$115	+\$152	+\$122

Traits observed: GL,BWT,200WT,400WT(x2),Scan(EMA,Rib,Rump,IMF),DOC,Genomics(CE,S-Step)

## AYRVALE BARTEL E7<sup>PV</sup> HBR

**BORN:** 9/09/2009 **GENETIC STATUS:** AMF,CAF,DDF,NHF,MAF **SOCIETY ID:** HIOE7  
 S: B/R NEW DIMENSION 7127 S: MYTTY IN FOCUS  
**SIRE:** TE MANIA BARTEL B219<sup>PV</sup> **DAM:** EAGLEHAWK JEDDA B32<sup>SV</sup>  
 D: TE MANIA JEDDA W85 D: EAGLEHAWK JEDDA Z48

### JULY 2019 ANGUS AUSTRALIA BREEDPLAN

CED	CEM	GL	BW	200 D	400 D	600 D	MCW	MILK	DC	SS	CWT	EMA	RIB	RUMP	RBV%	IMF%
+4.3	+4.9	-5.5	+1.7	+49	+88	+112	+66	+26	-10.1	+2.3	+74	+7.3	-0.9	+0.3	+0.2	+3.4
98%	96%	99%	99%	99%	99%	99%	99%	99%	87%	99%	98%	97%	97%	97%	96%	96%

### \$ INDEX VALUES

Angus Breeding	Domestic Index	Heavy Grain Index	Heavy Grass Index
+\$160	+\$137	+\$182	+\$146

Traits observed: BWT,200WT,400WT,600WT,SC,Scan(EMA,Rib,Rump,IMF),Genomics(CE,S-Step)

## BOOROOMOOKA BARTEL K274<sup>SV</sup> HBR

**BORN:** 26/08/2014 **GENETIC STATUS:** AMF,CAFU,DDFU,NHFU **SOCIETY ID:** NGMK274  
 S: TE MANIA BARTEL B219 S: POSS TOTAL IMPACT 745  
**SIRE:** AYRVALE BARTEL E7<sup>PV</sup> **DAM:** BOOROOMOOKA VORACIOUS H465<sup>#</sup>  
 D: EAGLEHAWK JEDDA B32 D: BOOROOMOOKA VORACIOUS E9

### JULY 2019 ANGUS AUSTRALIA BREEDPLAN

CED	CEM	GL	BW	200 D	400 D	600 D	MCW	MILK	DC	SS	CWT	EMA	RIB	RUMP	RBV%	IMF%
+3.2	+3.8	-7.5	+3.1	+63	+108	+151	+128	+20	-5.0	+2.8	+92	+7.3	-2.2	-2.2	+1.7	+1.5
75%	63%	97%	97%	95%	95%	95%	83%	70%	57%	94%	79%	83%	83%	82%	77%	80%

### \$ INDEX VALUES

Angus Breeding	Domestic Index	Heavy Grain Index	Heavy Grass Index
+\$156	+\$134	+\$167	+\$150

Traits observed: GL,CE,BWT,200WT(x2),400WT,600WT,SC,Scan(EMA,Rib,Rump,IMF),DOC,Genomics(CE,S-Step)

## CLUNIE RANGE LEGEND L348<sup>PV</sup> HBR

**BORN:** 9/07/2015 **GENETIC STATUS:** AMF,CAF,DDF,NHF,DWF,MAF,OSF **SOCIETY ID:** NBHL348  
 S: SCHURRTOP REALITY X723 S: CONNEALY EARNAN 076E  
**SIRE:** MATAURI REALITY 839<sup>#</sup> **DAM:** ABERDEEN ESTATE LAURA J81<sup>PV</sup>  
 D: MATAURI 06663 D: TUWHARETOA E111

### JULY 2019 ANGUS AUSTRALIA BREEDPLAN

CED	CEM	GL	BW	200 D	400 D	600 D	MCW	MILK	DC	SS	CWT	EMA	RIB	RUMP	RBV%	IMF%
-2.1	+3.2	-8.4	+6.1	+60	+102	+130	+138	+4	-8.2	+3.1	+71	+2.7	+2.5	+0.6	-1.2	+2.7
80%	59%	98%	98%	95%	91%	93%	83%	70%	55%	90%	78%	79%	81%	79%	83%	78%

### \$ INDEX VALUES

Angus Breeding	Domestic Index	Heavy Grain Index	Heavy Grass Index
+\$134	+\$117	+\$151	+\$124

Traits observed: BWT,200WT,400WT,600WT,SC,Scan(EMA,Rib,Rump,IMF),Genomics(CE,S-Step)

## BOONAROO GRAVITY G13 G013<sup>PV</sup> HBR

**BORN:** 13/04/2011 **GENETIC STATUS:** AMF,CAF,DDF,NHF **SOCIETY ID:** HCAG013  
 S: TE MANIA ULONG U41 S: KENNY'S CREEK SANDY S15  
**SIRE:** TE MANIA AFRICA A217<sup>FV</sup> **DAM:** TE MANIA LOWAN Z618<sup>PV</sup>  
 D: TE MANIA JEDDA Y32 D: TE MANIA LOWAN V19

### JULY 2019 ANGUS AUSTRALIA BREEDPLAN

CED	CEM	GL	BW	200 D	400 D	600 D	MCW	MILK	DC	SS	CWT	EMA	RIB	RUMP	RBV%	IMF%
+3.1	+0.0	-5.6	+4.1	+49	+93	+122	+108	+29	-7.4	+3.7	+63	+6.9	-2.0	-2.4	+2.0	+2.7
81%	74%	98%	97%	95%	94%	93%	85%	81%	69%	91%	88%	87%	89%	87%	83%	86%

### \$ INDEX VALUES

Angus Breeding	Domestic Index	Heavy Grain Index	Heavy Grass Index
+\$148	+\$130	+\$172	+\$134

Traits observed: BWT,200WT,600WT(x2),SC,Scan(EMA,Rib,Rump,IMF),DOC,Genomics(CE,S-Step)



**DNA tests help predict economically important Angus traits**

Zoetis has developed a suite of DNA tests for black Angus cattle that predict genetic potential for a range of economically important traits. HD 50K and i50K for Angus evaluate genetic potential for 22 key performance traits important to the future productivity of your business. The tests are brought to you by Zoetis...manufacturers of the leading animal health brands Ultravac®7in1 and Dectomax®.

**HD 50K for Angus** is the first and enduring gold standard for genomic prediction designed for superior and influential sires and dams in the black Angus breed. It has been developed using Estimated Breeding Values (EBVs) supplied by Angus Australia.

**i50K for Angus** is an evolution of HD 50K for Angus. Delivering the same information in a more cost-effective package and from a lower-density genotype, i50K assists with the same variety of selection and joining decisions as HD 50K for Angus and provides valuable information to stud and commercial producers alike.

Angus Australia combines pedigree and performance data from Angus BREEDPLAN with HD 50K and i50K MVPs to provide the most accurate genetic evaluation available for your stock.

MOLECULAR VALUE PREDICTIONS (MVPs) FOR 22 TRAITS	
<b>CALVING</b>	1.Birth Weight 2.Calving Ease Direct 3.Calving Ease Daughters 4.Gestation Length
<b>GROWTH</b>	5.200 Day Growth 6.400 day Weight 7.Average Daily Gain (Feedlot) 8.600 Day Weight 9.Mature Cow Weight 10.Milk (Maternal Ability)
<b>REPRODUCTION</b>	11.Days to Calving 12.Scrotal Size
<b>CARCASE</b>	13.Carcase Weight 14.Eye Muscle Area 15.Intramuscular Fat (Marbling) 16. Retail Beef Yield 17.Rib Fat 18.Rump Fat 19.Tenderness
<b>EFFICIENCY</b>	20.Dry Matter Intake 21.Net Feed Intake (Feedlot) 22.Net Feed Intake (Post Weaning)

**MVPs from i50K allow you to:**

- **More accurately identify animals that meet your breeding objectives**
- **Reliably join the right bull to the right females**
- **Enhance the rate of genetic gain in your herd in the traits important to you**

When it comes to buying bulls this season, ensure you're making selection decisions with the most comprehensive information available. Ask for bulls with complete breeding information; ask for bulls with i50K results. Contact Zoetis on 1300 768 400

# Bald Blair Bulls Rising 2 Years

Denotes EBVs in Top 10% of Angus Breed



## LOT 1 BALD BLAIR NORRIS N11<sup>PV</sup> APR

**BORN:** 7/07/2017      **GENETIC STATUS:** AMFU,CAFU,DDFU,NHFU      **SOCIETY ID:** NBBN11  
 S: AYRVALE BARTEL E7      S: SYDGEN BLACK PEARL 2006  
**SIRE:** BOOROOMOOKA BARTEL K274<sup>SV</sup>      **DAM:** BALD BLAIR PEARL L75<sup>PV</sup>  
 D: BOOROOMOOKA VORACIOUS H465      D: BALD BLAIR G196

JULY 2019 ANGUS AUSTRALIA BREEDPLAN																
CED	CEM	GL	BW	200 D	400 D	600 D	MCW	MILK	DC	SS	CWT	EMA	RIB	RUMP	RBV%	IMF%
+3.0	+3.8	-10.5	+4.3	+59	+100	+143	+125	+16	-3.2	+1.8	+83	+8.2	-1.8	-2.6	+2.2	+1.4
57%	42%	85%	74%	71%	70%	73%	67%	57%	40%	73%	62%	61%	64%	61%	57%	60%

\$ INDEX VALUES				BREEDING TYPE AND STRUCTURAL ASSESSMENT									
Angus Breeding	Domestic Index	Heavy Grain Index	Heavy Grass Index	Stat	Cap	BL	Ft Ft	Bk Ft	Leg Ang	P. Ang	Muscle	Doability	Sheath
+\$147	+\$129	+\$157	+\$143	27	40	31	21	23	26	23	40	28	4

Traits observed: GL,CE,BWT,200WT,400WT,600WT,SC,Scan(EMA,Rib,Rump,IMF),DOC,Genomics(CE,S-Step)



Semen Motility      Scrotal Circumference      Semen Morphology  
 ✓      39.5cm      77%  
**Vaccinated:** Pestigard, Vibrio, Lepto.

Purchaser: .....\$.....

## LOT 2 BALD BLAIR BLACK PEARL N70<sup>PV</sup> HBR

**BORN:** 16/07/2017      **GENETIC STATUS:** AMFU,CAFU,DDFU,NHFU      **SOCIETY ID:** NBBN70  
 S: SYDGEN TRUST 6228      S: S A V THUNDERBIRD 9061  
**SIRE:** SYDGEN BLACK PEARL 2006<sup>PV</sup>      **DAM:** BALD BLAIR L291<sup>PV</sup>  
 D: SYDGEN ANITA 8611      D: BALD BLAIR G123

JULY 2019 ANGUS AUSTRALIA BREEDPLAN																
CED	CEM	GL	BW	200 D	400 D	600 D	MCW	MILK	DC	SS	CWT	EMA	RIB	RUMP	RBV%	IMF%
+0.5	+2.1	-3.8	+4.3	+50	+96	+128	+110	+14	-3.5	+3.3	+77	+7.7	+0.2	-1.5	+1.2	+2.0
64%	54%	84%	75%	72%	71%	74%	69%	65%	45%	74%	65%	64%	66%	64%	61%	63%

\$ INDEX VALUES				BREEDING TYPE AND STRUCTURAL ASSESSMENT									
Angus Breeding	Domestic Index	Heavy Grain Index	Heavy Grass Index	Stat	Cap	BL	Ft Ft	Bk Ft	Leg Ang	P. Ang	Muscle	Doability	Sheath
+\$135	+\$123	+\$148	+\$130	28	40	30	22	24	26	22	40	28	4

Traits observed: GL,CE,BWT,200WT,400WT,600WT,SC,Scan(EMA,Rib,Rump,IMF),DOC,Genomics(CE,S-Step)



Semen Motility      Scrotal Circumference      Semen Morphology  
 ✓      42cm      80%  
**Vaccinated:** Pestigard, Vibrio, Lepto.

Purchaser: .....\$.....

## LOT 3 BALD BLAIR BIG SKY N36<sup>PV</sup> APR

**BORN:** 11/07/2017      **GENETIC STATUS:** AMFU,CAFU,DDFU,NHFU      **SOCIETY ID:** NBBN36  
 S: CONNEALY EARNAN 076E      S: CONNEALY COMRADE 1385  
**SIRE:** MUSGRAVE BIG SKY#      **DAM:** BALD BLAIR L89<sup>PV</sup>  
 D: SAV PRIMROSE 7861      D: BALD BLAIR F169

JULY 2019 ANGUS AUSTRALIA BREEDPLAN																
CED	CEM	GL	BW	200 D	400 D	600 D	MCW	MILK	DC	SS	CWT	EMA	RIB	RUMP	RBV%	IMF%
+2.7	+3.4	-5.9	+5.6	+66	+115	+150	+129	+11	-4.4	+2.8	+80	+8.9	-2.4	-2.6	+2.7	+1.2
61%	49%	74%	72%	72%	70%	71%	68%	63%	38%	68%	64%	63%	65%	62%	58%	62%

\$ INDEX VALUES				BREEDING TYPE AND STRUCTURAL ASSESSMENT									
Angus Breeding	Domestic Index	Heavy Grain Index	Heavy Grass Index	Stat	Cap	BL	Ft Ft	Bk Ft	Leg Ang	P. Ang	Muscle	Doability	Sheath
+\$160	+\$146	+\$172	+\$155	28	38	31	21	23	26	23	39	32	5

Traits observed: 400WT,600WT,SC,Scan(EMA,Rib,Rump,IMF),Genomics(CE,S-Step)



Semen Motility      Scrotal Circumference      Semen Morphology  
 ✓      39cm      85%  
**Vaccinated:** Pestigard, Vibrio, Lepto.

Purchaser: .....\$.....

## LOT 4 BALD BLAIR NELSON N104<sup>PV</sup> APR

**BORN:** 19/07/2017      **GENETIC STATUS:** AMFU,CAFU,DDFU,NHFU      **SOCIETY ID:** NBBN104  
 S: BALD BLAIR DAVID G105      S: BALD BLAIR HIGHLANDER C126  
**SIRE:** BALD BLAIR KEEGAN K279<sup>PV</sup>      **DAM:** BALD BLAIR H162<sup>PV</sup>  
 D: BALD BLAIR G7      D: BALD BLAIR E30

JULY 2019 ANGUS AUSTRALIA BREEDPLAN																
CED	CEM	GL	BW	200 D	400 D	600 D	MCW	MILK	DC	SS	CWT	EMA	RIB	RUMP	RBV%	IMF%
-1.2	-0.2	-0.6	+5.4	+49	+86	+116	+99	+11	-3.9	+2.3	+51	+4.9	+0.1	+2.4	-0.7	+3.4
54%	35%	71%	74%	70%	69%	73%	66%	57%	39%	71%	62%	60%	64%	60%	56%	59%

\$ INDEX VALUES				BREEDING TYPE AND STRUCTURAL ASSESSMENT									
Angus Breeding	Domestic Index	Heavy Grain Index	Heavy Grass Index	Stat	Cap	BL	Ft Ft	Bk Ft	Leg Ang	P. Ang	Muscle	Doability	Sheath
+\$128	+\$111	+\$144	+\$121	25	38	30	22	23	26	23	38	32	5

Traits observed: CE,BWT,200WT,400WT,600WT,SC,Scan(EMA,Rib,Rump,IMF),DOC,Genomics(CE,S-Step)



Semen Motility      Scrotal Circumference      Semen Morphology  
 ✓      39cm      86%  
**Vaccinated:** Pestigard, Vibrio, Lepto.

Purchaser: .....\$.....

# Bald Blair Bulls Rising 2 Years

Denotes EBVs in Top 10% of Angus Breed



## LOT 5 BALD BLAIR NORRIS N54<sup>PV</sup> APR

**BORN:** 14/07/2017      **GENETIC STATUS:** AMFU,CAFU,DDFU,NHFU      **SOCIETY ID:** NBBN54  
 S: AYRVALE BARTEL E7      S: BALD BLAIR DAVID G105  
**SIRE: BOOROOMOOKA BARTEL K274<sup>SV</sup>**      **DAM: BALD BLAIR L109<sup>PV</sup>**  
 D: BOOROOMOOKA VORACIOUS H465      D: BALD BLAIR D154

JULY 2019 ANGUS AUSTRALIA BREEDPLAN																
CED	CEM	GL	BW	200 D	400 D	600 D	MCW	MILK	DC	SS	CWT	EMA	RIB	RUMP	RBV%	IMF%
+1.2	+3.1	-4.4	+6.0	+55	+99	+130	+128	+10	-4.1	+1.1	+68	+6.5	-3.3	-2.7	+1.8	+2.9
56%	40%	84%	75%	71%	70%	74%	67%	56%	41%	73%	62%	62%	65%	61%	57%	61%

\$ INDEX VALUES				BREEDING TYPE AND STRUCTURAL ASSESSMENT									
Angus Breeding	Domestic Index	Heavy Grain Index	Heavy Grass Index	Stat	Cap	BL	Ft Ft	Bk Ft	Leg Ang	P. Ang	Muscle	Doability	Sheath
+\$149	+\$133	+\$175	+\$137	30	39	34	24	24	23	28	38	31	5

Traits observed: GL,CE,BWT,200WT,400WT,600WT,SC,Scan(EMA,Rib,Rump,IMF),DOC,Genomics(CE,S-Step)



**Semen Motility**      **Scrotal Circumference**      **Semen Morphology**  
 ✓      37.5cm      58%  
**Vaccinated:** Pestigard, Vibrio, Lepto.

Purchaser: .....\$.....

## LOT 6 BALD BLAIR TRACTION N199<sup>PV</sup> APR

**BORN:** 3/08/2017      **GENETIC STATUS:** AMFU,CAFU,DDFU,NHFU      **SOCIETY ID:** NBBN199

S: SITZ TOP GAME 561X  
**SIRE: JMB TRACTION 292<sup>PV</sup>**  
 D: JMB EMULOTA 013  
 S: BALD BLAIR DIRECTOR G151  
**DAM: BALD BLAIR K122<sup>PV</sup>**  
 D: BALD BLAIR DAVID G170



JULY 2019 ANGUS AUSTRALIA BREEDPLAN																
CED	CEM	GL	BW	200 D	400 D	600 D	MCW	MILK	DC	SS	CWT	EMA	RIB	RUMP	RBV%	IMF%
-3.6	-3.2	+1.0	+6.2	+50	+87	+110	+85	+13	-7.0	+3.5	+50	+7.5	+1.1	+2.0	+0.6	+2.1
57%	40%	85%	74%	71%	71%	74%	68%	60%	36%	73%	63%	61%	64%	61%	57%	60%

\$ INDEX VALUES				BREEDING TYPE AND STRUCTURAL ASSESSMENT									
Angus Breeding	Domestic Index	Heavy Grain Index	Heavy Grass Index	Stat	Cap	BL	Ft Ft	Bk Ft	Leg Ang	P. Ang	Muscle	Doability	Sheath
+\$124	+\$113	+\$130	+\$119	29	39	33	21	22	26	23	39	32	5

Traits observed: GL,CE,BWT,200WT,400WT,600WT,SC,Scan(EMA,Rib,Rump,IMF),DOC,Genomics(CE,S-Step)



**Semen Motility**      **Scrotal Circumference**      **Semen Morphology**  
 ✓      43.5cm      89%  
**Vaccinated:** Pestigard, Vibrio, Lepto.

Purchaser: .....\$.....

## LOT 7 BALD BLAIR TRACTION N194<sup>PV</sup> HBR

**BORN:** 2/08/2017      **GENETIC STATUS:** AMFU,CAFU,DDFU,NHFU      **SOCIETY ID:** NBBN194

S: SITZ TOP GAME 561X      S: BALD BLAIR DEBONAIR D34  
**SIRE: JMB TRACTION 292<sup>PV</sup>**      **DAM: BALD BLAIR K84<sup>SV</sup>**  
 D: JMB EMULOTA 013      D: BALD BLAIR F17

JULY 2019 ANGUS AUSTRALIA BREEDPLAN																
CED	CEM	GL	BW	200 D	400 D	600 D	MCW	MILK	DC	SS	CWT	EMA	RIB	RUMP	RBV%	IMF%
-5.8	-2.0	-1.6	+7.4	+58	+102	+129	+100	+20	-7.3	+3.2	+66	+3.9	-0.3	-1.0	+1.1	+1.1
59%	42%	85%	75%	71%	71%	74%	68%	61%	38%	73%	63%	62%	65%	62%	58%	61%

\$ INDEX VALUES				BREEDING TYPE AND STRUCTURAL ASSESSMENT									
Angus Breeding	Domestic Index	Heavy Grain Index	Heavy Grass Index	Stat	Cap	BL	Ft Ft	Bk Ft	Leg Ang	P. Ang	Muscle	Doability	Sheath
+\$118	+\$111	+\$120	+\$115	25	40	19	22	23	25	25	40	30	4

Traits observed: GL,CE,BWT,200WT,400WT,600WT,SC,Scan(EMA,Rib,Rump,IMF),DOC,Genomics(CE,S-Step)



**Semen Motility**      **Scrotal Circumference**      **Semen Morphology**  
 ✓      41cm      Retest  
**Vaccinated:** Pestigard, Vibrio, Lepto.

Purchaser: .....\$.....

# Bald Blair Bulls Rising 2 Years

Denotes EBVs in Top 10% of Angus Breed



## LOT 8 BALD BLAIR NEWTON N173<sup>PV</sup> APR

**BORN:** 28/07/2017      **GENETIC STATUS:** AMFU,CAFU,DDFU,NHFU      **SOCIETY ID:** NBBN173  
 S: CONNEALY RIGHT ANSWER 746      S: BALD BLAIR DIRECTOR G151  
**SIRE:** BALD BLAIR RIGHT ANSWER J94<sup>PV</sup>      **DAM:** BALD BLAIR K146<sup>SV</sup>  
 D: BALD BLAIR G152      D: BALD BLAIR F209

JULY 2019 ANGUS AUSTRALIA BREEDPLAN																
CED	CEM	GL	BW	200 D	400 D	600 D	MCW	MILK	DC	SS	CWT	EMA	RIB	RUMP	RBV%	IMF%
+0.5	+0.4	-0.9	+2.6	+52	+93	+120	+86	+20	-3.0	+3.1	+64	+3.1	+1.1	+1.0	+0.1	+2.3
54%	36%	85%	74%	70%	69%	73%	67%	59%	39%	71%	63%	62%	65%	62%	59%	61%

\$ INDEX VALUES				BREEDING TYPE AND STRUCTURAL ASSESSMENT									
Angus Breeding	Domestic Index	Heavy Grain Index	Heavy Grass Index	Stat	Cap	BL	Ft Ft	Bk Ft	Leg Ang	P. Ang	Muscle	Doability	Sheath
<b>+\$122</b>	<b>+\$116</b>	<b>+\$126</b>	<b>+\$121</b>	26	39	30	22	22	26	24	38	32	5

Traits observed: GL,CE,BWT,200WT,400WT,600WT,SC,Scan(EMA,Rib,Rump,IMF),DOC,Genomics(CE,S-Step)



Semen Motility  Scrotal Circumference **41cm** Semen Morphology **81%**  
**Vaccinated:** Pestigard, Vibrio, Lepto.

Purchaser: .....\$.....

## LOT 9 BALD BLAIR NORMAN N29<sup>PV</sup> APR

**BORN:** 11/07/2017      **GENETIC STATUS:** AMFU,CAFU,DDFU,NHFU      **SOCIETY ID:** NBBN29  
 S: CONNEALY RIGHT ANSWER 746      S: BALD BLAIR HIGHLANDER J166  
**SIRE:** BALD BLAIR RIGHT ANSWER J9<sup>PV</sup>      **DAM:** BALD BLAIR L313<sup>PV</sup>  
 D: BALD BLAIR G123      D: BALD BLAIR G46

JULY 2019 ANGUS AUSTRALIA BREEDPLAN																
CED	CEM	GL	BW	200 D	400 D	600 D	MCW	MILK	DC	SS	CWT	EMA	RIB	RUMP	RBV%	IMF%
+1.5	+0.0	-5.2	+5.0	+52	+89	+113	+105	+18	-3.0	+2.8	+66	+7.1	-0.9	-1.4	+2.2	+0.9
54%	36%	84%	73%	70%	69%	73%	67%	57%	39%	72%	60%	59%	63%	59%	55%	58%

\$ INDEX VALUES				BREEDING TYPE AND STRUCTURAL ASSESSMENT									
Angus Breeding	Domestic Index	Heavy Grain Index	Heavy Grass Index	Stat	Cap	BL	Ft Ft	Bk Ft	Leg Ang	P. Ang	Muscle	Doability	Sheath
<b>+\$112</b>	<b>+\$115</b>	<b>+\$110</b>	<b>+\$114</b>	26	38	29	23	23	25	24	38	31	5

Traits observed: GL,CE,BWT,200WT,400WT,600WT,SC,Scan(EMA,Rib,Rump,IMF),DOC,Genomics(CE,S-Step)



Semen Motility  Scrotal Circumference **39cm** Semen Morphology **86%**  
**Vaccinated:** Pestigard, Vibrio, Lepto.

Purchaser: .....\$.....

## LOT 10 BALD BLAIR TRACTION N148<sup>PV</sup> APR

**BORN:** 25/07/2017      **GENETIC STATUS:** AMFU,CAFU,DDFU,NHFU      **SOCIETY ID:** NBBN148  
 S: SITZ TOP GAME 561X      S: BALD BLAIR DAVID G105  
**SIRE:** JMB TRACTION 292<sup>PV</sup>      **DAM:** BALD BLAIR K104<sup>PV</sup>  
 D: JMB EMULOTA 013      D: BALD BLAIR G183

JULY 2019 ANGUS AUSTRALIA BREEDPLAN																
CED	CEM	GL	BW	200 D	400 D	600 D	MCW	MILK	DC	SS	CWT	EMA	RIB	RUMP	RBV%	IMF%
+3.0	+1.7	-3.9	+3.0	+47	+88	+114	+88	+16	-5.3	+2.0	+53	+7.6	-0.9	-1.5	+1.9	+1.5
57%	40%	84%	75%	72%	71%	74%	68%	60%	37%	73%	63%	62%	65%	62%	58%	61%

\$ INDEX VALUES				BREEDING TYPE AND STRUCTURAL ASSESSMENT									
Angus Breeding	Domestic Index	Heavy Grain Index	Heavy Grass Index	Stat	Cap	BL	Ft Ft	Bk Ft	Leg Ang	P. Ang	Muscle	Doability	Sheath
<b>+\$134</b>	<b>+\$125</b>	<b>+\$141</b>	<b>+\$130</b>	25	38	29	22	23	25	25	38	30	4

Traits observed: GL,CE,BWT,200WT,400WT,600WT,SC,Scan(EMA,Rib,Rump,IMF),DOC,Genomics(CE,S-Step)



Semen Motility  Scrotal Circumference **37.5cm** Semen Morphology **93%**  
**Vaccinated:** Pestigard, Vibrio, Lepto.

Purchaser: .....\$.....

## LOT 11 BALD BLAIR TRACTION N175<sup>PV</sup> APR

**BORN:** 29/07/2017      **GENETIC STATUS:** AMFU,CAFU,DDFU,NHFU      **SOCIETY ID:** NBBN175  
 S: SITZ TOP GAME 561X      S: RENNYLEA F65  
**SIRE:** JMB TRACTION 292<sup>PV</sup>      **DAM:** BALD BLAIR J168<sup>PV</sup>  
 D: JMB EMULOTA 013      D: BALD BLAIR G46

JULY 2019 ANGUS AUSTRALIA BREEDPLAN																
CED	CEM	GL	BW	200 D	400 D	600 D	MCW	MILK	DC	SS	CWT	EMA	RIB	RUMP	RBV%	IMF%
+0.1	-1.4	+1.6	+0.9	+38	+78	+96	+43	+25	-6.4	+2.3	+51	+4.5	+2.8	+2.6	-1.6	+2.5
58%	40%	85%	75%	72%	71%	74%	68%	62%	35%	73%	63%	62%	64%	62%	57%	61%

\$ INDEX VALUES				BREEDING TYPE AND STRUCTURAL ASSESSMENT									
Angus Breeding	Domestic Index	Heavy Grain Index	Heavy Grass Index	Stat	Cap	BL	Ft Ft	Bk Ft	Leg Ang	P. Ang	Muscle	Doability	Sheath
<b>+\$110</b>	<b>+\$104</b>	<b>+\$109</b>	<b>+\$109</b>	26	39	30	22	23	26	24	40	32	4

Traits observed: GL,CE,BWT,200WT,400WT,600WT,SC,Scan(EMA,IMF),DOC,Genomics(CE,S-Step)



Semen Motility  Scrotal Circumference **41.5cm** Semen Morphology **89%**  
**Vaccinated:** Pestigard, Vibrio, Lepto.

Purchaser: .....\$.....

# Bald Blair Bulls Rising 2 Years

Denotes EBVs in Top 10% of Angus Breed



## LOT 12 BALD BLAIR NEWTON N157<sup>PV</sup> APR

**BORN:** 26/07/2017 **GENETIC STATUS:** AMFU,CAFU,DDFU,NHFU **SOCIETY ID:** NBBN157  
 S: CONNEALY RIGHT ANSWER 746 S: BALD BLAIR ULTIMATE H186  
**SIRE:** BALD BLAIR RIGHT ANSWER J94<sup>PV</sup> **DAM:** BALD BLAIR K341<sup>SV</sup>  
 D: BALD BLAIR G152 D: BALD BLAIR A35

JULY 2019 ANGUS AUSTRALIA BREEDPLAN																
CED	CEM	GL	BW	200 D	400 D	600 D	MCW	MILK	DC	SS	CWT	EMA	RIB	RUMP	RBY%	IMF%
+1.5	+0.4	-3.7	+3.7	+53	+100	+131	+115	+24	-2.0	+3.4	+76	+5.4	+0.3	-0.4	+1.0	+1.6
54%	38%	84%	74%	71%	70%	73%	67%	60%	41%	72%	65%	63%	66%	63%	60%	62%

\$ INDEX VALUES				BREEDING TYPE AND STRUCTURAL ASSESSMENT									
Angus Breeding	Domestic Index	Heavy Grain Index	Heavy Grass Index	Stat	Cap	BL	Ft Ft	Bk Ft	Leg Ang	P. Ang	Muscle	Doability	Sheath
+\$123	+\$118	+\$127	+\$123	28	38	31	22	24	27	23	38	29	5

Traits observed: GL,CE,BWT,200WT,400WT,600WT,SC,Scan(EMA,Rib,Rump,IMF),DOC,Genomics(CE,S-Step)

Semen Motility  Scrotal Circumference 42cm Semen Morphology Retest  
**Vaccinated:** Pestigard, Vibrio, Lepto.

Purchaser: .....\$.....

## LOT 13 BALD BLAIR NEWTON N166<sup>PV</sup> APR

**BORN:** 27/07/2017 **GENETIC STATUS:** AM3%,CA3%,DD3%,NH3% **SOCIETY ID:** NBBN166  
 S: CONNEALY RIGHT ANSWER 746 S: BALD BLAIR GRADE UP H194  
**SIRE:** BALD BLAIR RIGHT ANSWER J94<sup>PV</sup> **DAM:** BALD BLAIR K306<sup>SV</sup>  
 D: BALD BLAIR G152 D: UNKNOWN

JULY 2019 ANGUS AUSTRALIA BREEDPLAN																
CED	CEM	GL	BW	200 D	400 D	600 D	MCW	MILK	DC	SS	CWT	EMA	RIB	RUMP	RBY%	IMF%
+3.4	+2.3	+0.7	+2.3	+54	+95	+124	+89	+19	+2.3	+2.0	+67	+3.6	-1.9	-2.7	+1.2	+1.9
53%	34%	70%	72%	70%	68%	69%	67%	57%	39%	63%	63%	62%	65%	62%	59%	61%

\$ INDEX VALUES				BREEDING TYPE AND STRUCTURAL ASSESSMENT									
Angus Breeding	Domestic Index	Heavy Grain Index	Heavy Grass Index	Stat	Cap	BL	Ft Ft	Bk Ft	Leg Ang	P. Ang	Muscle	Doability	Sheath
+\$109	+\$114	+\$109	+\$113	29	38	32	21	22	26	23	38	31	5

Traits observed: BWT,400WT,Genomics(CE,S-Step)

Semen Motility  Scrotal Circumference 41.5cm Semen Morphology 86%  
**Vaccinated:** Pestigard, Vibrio, Lepto.

Purchaser: .....\$.....

## LOT 14 BALD BLAIR BIG SKY N170<sup>PV</sup> HBR

**BORN:** 28/07/2017 **GENETIC STATUS:** AMFU,CAFU,DDFU,NHFU **SOCIETY ID:** NBBN170  
 S: CONNEALY EARNAN 076E S: KENNY'S CREEK REGENT G213  
**SIRE:** MUSGRAVE BIG SKY# **DAM:** BALD BLAIR K107<sup>PV</sup>  
 D: SAV PRIMROSE 7861 D: BALD BLAIR D160

JULY 2019 ANGUS AUSTRALIA BREEDPLAN																
CED	CEM	GL	BW	200 D	400 D	600 D	MCW	MILK	DC	SS	CWT	EMA	RIB	RUMP	RBY%	IMF%
-1.3	+1.7	-6.5	+4.9	+52	+94	+112	+86	+12	-5.0	+2.0	+71	+9.3	-0.8	-0.7	+1.3	+1.5
61%	49%	85%	75%	72%	72%	74%	69%	64%	39%	74%	64%	63%	65%	63%	59%	62%

\$ INDEX VALUES				BREEDING TYPE AND STRUCTURAL ASSESSMENT									
Angus Breeding	Domestic Index	Heavy Grain Index	Heavy Grass Index	Stat	Cap	BL	Ft Ft	Bk Ft	Leg Ang	P. Ang	Muscle	Doability	Sheath
+\$124	+\$123	+\$126	+\$122	25	39	29	23	23	25	24	40	30	4

Traits observed: GL,CE,BWT,200WT,400WT,600WT,SC,Scan(EMA,Rib,Rump,IMF),DOC,Genomics(CE,S-Step)

Semen Motility  Scrotal Circumference 41.5cm Semen Morphology 80%  
**Vaccinated:** Pestigard, Vibrio, Lepto.

Purchaser: .....\$.....

Keep up-to-date with events at Bald Blair Angus



YouTube

# Bald Blair Bulls Rising 2 Years

Denotes EBVs in Top 10% of Angus Breed



## LOT 15 BALD BLAIR NEWTON N198<sup>SV</sup> APR

**BORN:** 3/08/2017      **GENETIC STATUS:** AMFU,CAFU,DDF,NHFU      **SOCIETY ID:** NBBN198  
 S: CONNEALY RIGHT ANSWER 746      S: RENNYLEA F65  
**SIRE:** BALD BLAIR RIGHT ANSWER J94<sup>PV</sup>      **DAM:** BALD BLAIR K277#  
 D: BALD BLAIR G152      D: BALD BLAIR E84

JULY 2019 ANGUS AUSTRALIA BREEDPLAN																
CED	CEM	GL	BW	200 D	400 D	600 D	MCW	MILK	DC	SS	CWT	EMA	RIB	RUMP	RBV%	IMF%
-1.8	-3.3	+0.9	+4.9	+62	+101	+138	+98	+24	-1.0	+2.7	+75	+3.8	+0.1	-0.4	+0.6	+1.3
56%	39%	84%	74%	70%	70%	73%	68%	58%	41%	72%	63%	62%	65%	62%	60%	61%

\$ INDEX VALUES				BREEDING TYPE AND STRUCTURAL ASSESSMENT									
Angus Breeding	Domestic Index	Heavy Grain Index	Heavy Grass Index	Stat	Cap	BL	Ft Ft	Bk Ft	Leg Ang	P. Ang	Muscle	Doability	Sheath
+\$109	+\$106	+\$103	+\$115	28	38	29	23	22	22	23	39	31	5

Traits observed: GL,BWT,200WT,400WT,600WT,SC,Scan(EMA,Rib,Rump,IMF),DOC,Genomics(CE,S-Step)



Semen Motility  Scrotal Circumference 40cm Semen Morphology 85%  
**Vaccinated:** Pestigard, Vibrio, Lepto.

Purchaser: .....\$.....

## LOT 16 BALD BLAIR BARTEL N213<sup>PV</sup> HBR

**BORN:** 7/08/2017      **GENETIC STATUS:** AMFU,CAFU,DDFU,NHFU      **SOCIETY ID:** NBBN213  
 S: TE MANIA BARTEL B219      S: V A R RESERVE 1111  
**SIRE:** AYRVALE BARTEL E7<sup>PV</sup>      **DAM:** BALD BLAIR L292<sup>PV</sup>  
 D: EAGLEHAWK JEDDA B32      D: BALD BLAIR G40

JULY 2019 ANGUS AUSTRALIA BREEDPLAN																
CED	CEM	GL	BW	200 D	400 D	600 D	MCW	MILK	DC	SS	CWT	EMA	RIB	RUMP	RBV%	IMF%
+5.3	+4.1	-6.6	+0.5	+45	+83	+112	+76	+23	-5.7	+2.1	+64	+5.8	-1.6	-1.0	+0.9	+2.0
64%	56%	84%	75%	72%	71%	74%	70%	65%	52%	74%	67%	66%	68%	66%	64%	65%

\$ INDEX VALUES				BREEDING TYPE AND STRUCTURAL ASSESSMENT									
Angus Breeding	Domestic Index	Heavy Grain Index	Heavy Grass Index	Stat	Cap	BL	Ft Ft	Bk Ft	Leg Ang	P. Ang	Muscle	Doability	Sheath
+\$132	+\$120	+\$139	+\$128	28	40	31	22	22	25	25	39	32	5

Traits observed: GL,CE,BWT,200WT,400WT,600WT,SC,Scan(EMA,Rib,Rump,IMF),DOC,Genomics(CE,S-Step)



Semen Motility  Scrotal Circumference 41.5cm Semen Morphology Retest  
**Vaccinated:** Pestigard, Vibrio, Lepto.

Purchaser: .....\$.....

## LOT 17 BALD BLAIR NEWTON N249<sup>PV</sup> APR

**BORN:** 20/08/2017      **GENETIC STATUS:** AMFU,CAFU,DDFU,NHFU      **SOCIETY ID:** NBBN249

S: CONNEALY RIGHT ANSWER 746  
**SIRE:** BALD BLAIR RIGHT ANSWER J94<sup>PV</sup>  
 D: BALD BLAIR G152

S: SYDGEN BLACK PEARL 2006  
**DAM:** BALD BLAIR L259<sup>PV</sup>  
 D: BALD BLAIR G120



JULY 2019 ANGUS AUSTRALIA BREEDPLAN																
CED	CEM	GL	BW	200 D	400 D	600 D	MCW	MILK	DC	SS	CWT	EMA	RIB	RUMP	RBV%	IMF%
+1.3	+2.6	-3.1	+5.0	+62	+113	+154	+113	+25	+1.7	+2.0	+93	+3.3	-2.7	-4.5	+1.5	+2.3
56%	41%	72%	73%	71%	70%	73%	68%	60%	42%	72%	65%	63%	67%	64%	61%	63%

\$ INDEX VALUES				BREEDING TYPE AND STRUCTURAL ASSESSMENT									
Angus Breeding	Domestic Index	Heavy Grain Index	Heavy Grass Index	Stat	Cap	BL	Ft Ft	Bk Ft	Leg Ang	P. Ang	Muscle	Doability	Sheath
+\$133	+\$126	+\$147	+\$132	35	39	29	23	23	26	23	39	30	5

Traits observed: CE,BWT,200WT,400WT,600WT,SC,Scan(EMA,Rib,Rump,IMF),DOC,Genomics(CE,S-Step)



Semen Motility  Scrotal Circumference 39.5cm Semen Morphology Retest  
**Vaccinated:** Pestigard, Vibrio, Lepto.

Purchaser: .....\$.....

# Bald Blair Bulls Rising 2 Years

Denotes EBVs in Top 10% of Angus Breed



## LOT 18 BALD BLAIR TRACTION N255<sup>PV</sup> APR

**BORN:** 21/08/2017      **GENETIC STATUS:** AMFU,CAFU,DDFU,NHFU      **SOCIETY ID:** NBBN255  
 S: SITZ TOP GAME 561X      S: BALD BLAIR DEBONAIR D34  
**SIRE:** JMB TRACTION 292<sup>PV</sup>      **DAM:** BALD BLAIR DAVID G170<sup>SV</sup>  
 D: JMB EMULOTA 013      D: BALD BLAIR Y105

JULY 2019 ANGUS AUSTRALIA BREEDPLAN																
CED	CEM	GL	BW	200 D	400 D	600 D	MCW	MILK	DC	SS	CWT	EMA	RIB	RUMP	RBV%	IMF%
-3.0	-3.3	-1.4	+8.2	+56	+101	+134	+126	+13	-3.6	+2.1	+67	+5.2	-3.3	-3.7	+1.7	+2.6
59%	43%	85%	75%	72%	72%	74%	68%	63%	38%	74%	64%	63%	66%	63%	58%	62%

\$ INDEX VALUES				BREEDING TYPE AND STRUCTURAL ASSESSMENT									
Angus Breeding	Domestic Index	Heavy Grain Index	Heavy Grass Index	Stat	Cap	BL	Ft Ft	Bk Ft	Leg Ang	P. Ang	Muscle	Doability	Sheath
+\$129	+\$117	+\$152	+\$119	26	39	30	22	23	26	23	39	32	4

Traits observed: GL,CE,BWT,200WT,400WT,600WT,SC,Scan(EMA,Rib,Rump,IMF),DOC,Genomics(CE,S-Step)



Semen Motility  Scrotal Circumference 40.5cm Semen Morphology 67.5  
**Vaccinated:** Pestigard, Vibrio, Lepto.

Purchaser: .....\$.....

## LOT 19 BALD BLAIR N232<sup>PV</sup> APR

**BORN:** 13/08/2017      **GENETIC STATUS:** AMFU,CAFU,DDFU,NHFU      **SOCIETY ID:** NBBN232  
 S: BOOROOMOOKA FRANKEL F510      S: BALD BLAIR NEW DESIGN G117  
**SIRE:** BALD BLAIR JIM JIM J140<sup>PV</sup>      **DAM:** BALD BLAIR J200<sup>SV</sup>  
 D: BALD BLAIR F214      D: BALD BLAIR F209

JULY 2019 ANGUS AUSTRALIA BREEDPLAN																
CED	CEM	GL	BW	200 D	400 D	600 D	MCW	MILK	DC	SS	CWT	EMA	RIB	RUMP	RBV%	IMF%
+1.4	-1.8	-2.1	+2.8	+43	+84	+112	+85	+15	-4.2	+2.1	+56	+6.6	+2.1	+2.6	-0.6	+3.2
53%	36%	70%	73%	69%	68%	72%	66%	57%	38%	71%	61%	58%	63%	59%	54%	58%

\$ INDEX VALUES				BREEDING TYPE AND STRUCTURAL ASSESSMENT									
Angus Breeding	Domestic Index	Heavy Grain Index	Heavy Grass Index	Stat	Cap	BL	Ft Ft	Bk Ft	Leg Ang	P. Ang	Muscle	Doability	Sheath
+\$132	+\$115	+\$146	+\$126	25	38	28	23	23	26	23	37	34	4

Traits observed: CE,BWT,200WT,400WT,600WT,SC,Scan(EMA,Rib,IMF),DOC,Genomics(CE,S-Step)



Semen Motility  Scrotal Circumference 40cm Semen Morphology 85%  
**Vaccinated:** Pestigard, Vibrio, Lepto.

Purchaser: .....\$.....

## LOT 20 BALD BLAIR NELSON N223<sup>PV</sup> APR

**BORN:** 11/08/2017      **GENETIC STATUS:** AMFU,CAFU,DDFU,NHFU      **SOCIETY ID:** NBBN223  
 S: BOOROOMOOKA FRANKEL F510      S: BALD BLAIR DIRECTOR G41  
**SIRE:** BALD BLAIR JIM JIM J140<sup>PV</sup>      **DAM:** BALD BLAIR J234<sup>PV</sup>  
 D: BALD BLAIR F214      D: BALD BLAIR E30

JULY 2019 ANGUS AUSTRALIA BREEDPLAN																
CED	CEM	GL	BW	200 D	400 D	600 D	MCW	MILK	DC	SS	CWT	EMA	RIB	RUMP	RBV%	IMF%
+2.1	+0.8	-2.6	+2.8	+36	+65	+82	+53	+17	-4.7	+3.0	+34	+9.6	+0.6	+0.8	+1.3	+3.0
53%	37%	70%	73%	69%	68%	72%	66%	56%	38%	71%	60%	58%	62%	59%	54%	57%

\$ INDEX VALUES				BREEDING TYPE AND STRUCTURAL ASSESSMENT									
Angus Breeding	Domestic Index	Heavy Grain Index	Heavy Grass Index	Stat	Cap	BL	Ft Ft	Bk Ft	Leg Ang	P. Ang	Muscle	Doability	Sheath
+\$122	+\$116	+\$134	+\$116	23	38	27	22	23	26	24	38	34	5

Traits observed: BWT,200WT,400WT,600WT,SC,Scan(EMA,IMF),DOC,Genomics(CE,S-Step)



Semen Motility  Scrotal Circumference 39cm Semen Morphology Retest  
**Vaccinated:** Pestigard, Vibrio, Lepto.

Purchaser: .....\$.....

## LOT 21 BALD BLAIR NEPTUNE N224<sup>PV</sup> APR

**BORN:** 11/08/2017      **GENETIC STATUS:** AMFU,CAFU,DDFU,NHFU      **SOCIETY ID:** NBBN224  
 S: SYDGEN TRUST 6228      S: V A R RESERVE 1111  
**SIRE:** SYDGEN BLACK PEARL 2006<sup>PV</sup>      **DAM:** BALD BLAIR L226<sup>PV</sup>  
 D: SYDGEN ANITA 8611      D: BALD BLAIR G164

JULY 2019 ANGUS AUSTRALIA BREEDPLAN																
CED	CEM	GL	BW	200 D	400 D	600 D	MCW	MILK	DC	SS	CWT	EMA	RIB	RUMP	RBV%	IMF%
+2.7	+3.4	-0.7	+3.4	+46	+82	+116	+98	+16	-4.3	+0.8	+67	+3.2	+0.6	-0.5	-0.7	+2.1
63%	52%	85%	75%	72%	71%	74%	70%	65%	44%	74%	65%	64%	67%	64%	61%	63%

\$ INDEX VALUES				BREEDING TYPE AND STRUCTURAL ASSESSMENT									
Angus Breeding	Domestic Index	Heavy Grain Index	Heavy Grass Index	Stat	Cap	BL	Ft Ft	Bk Ft	Leg Ang	P. Ang	Muscle	Doability	Sheath
+\$116	+\$104	+\$123	+\$114	27	38	30	22	22	27	23	38	32	5

Traits observed: GL,CE,BWT,200WT,400WT,600WT,SC,Scan(EMA,Rib,Rump,IMF),DOC,Genomics(CE,S-Step)



Semen Motility  Scrotal Circumference 35.5cm Semen Morphology Retest  
**Vaccinated:** Pestigard, Vibrio, Lepto.

Purchaser: .....\$.....



# Bald Blair Bulls Rising 2 Years

Denotes EBVs in Top 10% of Angus Breed



## LOT 22 BALD BLAIR TRACTION N254<sup>PV</sup> APR

**BORN:** 21/08/2017 **GENETIC STATUS:** AMFU,CAFU,DDFU,NHFU **SOCIETY ID:** NBBN254  
 S: SITZ TOP GAME 561X S: BALD BLAIR HIGHLANDER C126  
**SIRE:** JMB TRACTION 292<sup>PV</sup> **DAM:** BALD BLAIR F174<sup>SV</sup>  
 D: JMB EMULOTA 013 D: BALD BLAIR C16

JULY 2019 ANGUS AUSTRALIA BREEDPLAN																
CED	CEM	GL	BW	200 D	400 D	600 D	MCW	MILK	DC	SS	CWT	EMA	RIB	RUMP	RBV%	IMF%
-0.8	-1.9	+0.0	+3.0	+48	+89	+114	+73	+22	-0.2	+1.5	+59	+7.7	-1.3	-1.2	+1.1	+1.0
59%	42%	85%	75%	73%	72%	75%	69%	64%	38%	74%	65%	64%	66%	63%	59%	63%

\$ INDEX VALUES				BREEDING TYPE AND STRUCTURAL ASSESSMENT									
Angus Breeding	Domestic Index	Heavy Grain Index	Heavy Grass Index	Stat	Cap	BL	Ft Ft	Bk Ft	Leg Ang	P. Ang	Muscle	Doability	Sheath
<b>+\$98</b>	<b>+\$105</b>	<b>+\$88</b>	<b>+\$106</b>	27	39	31	22	23	26	24	38	32	4

Traits observed: GL,CE,BWT,200WT,400WT,600WT,SC,Scan(EMA,Rib,Rump,IMF),DOC,Genomics(CE,S-Step)

Semen Motility  Scrotal Circumference 37.5cm Semen Morphology 85%  
**Vaccinated:** Pestigard, Vibrio, Lepto.

Purchaser: .....\$.....

## LOT 23 BALD BLAIR NIKOLAI N235<sup>PV</sup> APR

**BORN:** 14/08/2017 **GENETIC STATUS:** AM3%,CA3%,DD3%,NH3% **SOCIETY ID:** NBBN235  
 S: BALD BLAIR DAVID G105 S: BALD BLAIR HORATIO H94  
**SIRE:** BALD BLAIR KEEGAN K279<sup>PV</sup> **DAM:** BALD BLAIR K310<sup>SV</sup>  
 D: BALD BLAIR G7 D: UNKNOWN

JULY 2019 ANGUS AUSTRALIA BREEDPLAN																
CED	CEM	GL	BW	200 D	400 D	600 D	MCW	MILK	DC	SS	CWT	EMA	RIB	RUMP	RBV%	IMF%
-4.9	-4.4	-1.5	+8.9	+60	+109	+152	+147	+11	-2.4	+3.1	+77	+4.6	-0.6	+0.9	-0.2	+2.4
51%	31%	69%	72%	68%	67%	71%	64%	54%	33%	69%	58%	56%	61%	57%	52%	56%

\$ INDEX VALUES				BREEDING TYPE AND STRUCTURAL ASSESSMENT									
Angus Breeding	Domestic Index	Heavy Grain Index	Heavy Grass Index	Stat	Cap	BL	Ft Ft	Bk Ft	Leg Ang	P. Ang	Muscle	Doability	Sheath
<b>+\$128</b>	<b>+\$108</b>	<b>+\$143</b>	<b>+\$123</b>	27	38	30	22	24	25	23	38	32	4

Traits observed: BWT,200WT,400WT,600WT,SC,Scan(EMA,Rib,Rump,IMF),DOC,Genomics(CE,S-Step)

Semen Motility  Scrotal Circumference 41.5cm Semen Morphology Retest  
**Vaccinated:** Pestigard, Vibrio, Lepto.

Purchaser: .....\$.....

## LOT 24 BALD BLAIR NICOLAS N239<sup>PV</sup> APR

**BORN:** 16/08/2017 **GENETIC STATUS:** AMFU,CAFU,DDFU,NHFU **SOCIETY ID:** NBBN239  
 S: SYDGEN BLACK PEARL 2006 S: TE MANIA INFINITY 04 379 AB  
**SIRE:** BALD BLAIR BLACK PEARL L52<sup>PV</sup> **DAM:** BALD BLAIR F52<sup>SV</sup>  
 D: BALD BLAIR E148 D: BALD BLAIR C15

JULY 2019 ANGUS AUSTRALIA BREEDPLAN																
CED	CEM	GL	BW	200 D	400 D	600 D	MCW	MILK	DC	SS	CWT	EMA	RIB	RUMP	RBV%	IMF%
+3.7	+3.9	-9.7	+0.7	+38	+66	+84	+52	+17	-4.3	+1.0	+53	+7.1	-0.3	-0.7	+0.1	+2.5
56%	42%	72%	73%	69%	69%	72%	66%	59%	42%	71%	61%	59%	63%	60%	56%	58%

\$ INDEX VALUES				BREEDING TYPE AND STRUCTURAL ASSESSMENT									
Angus Breeding	Domestic Index	Heavy Grain Index	Heavy Grass Index	Stat	Cap	BL	Ft Ft	Bk Ft	Leg Ang	P. Ang	Muscle	Doability	Sheath
<b>+\$107</b>	<b>+\$107</b>	<b>+\$110</b>	<b>+\$106</b>	25	37	29	22	24	26	23	36	33	5

Traits observed: CE,BWT,200WT,400WT,600WT,SC,Scan(EMA,Rib,Rump,IMF),DOC,Genomics(CE,S-Step)

Semen Motility  Scrotal Circumference 40.5cm Semen Morphology 70%  
**Vaccinated:** Pestigard, Vibrio, Lepto.

Purchaser: .....\$.....

## LOT 25 BALD BLAIR NIKOLAI N298<sup>PV</sup> APR

**BORN:** 3/09/2017 **GENETIC STATUS:** AMFU,CAFU,DDFU,NHFU **SOCIETY ID:** NBBN298  
 S: BALD BLAIR DAVID G105 S: BALD BLAIR DEBONAIR D34  
**SIRE:** BALD BLAIR KEEGAN K279<sup>PV</sup> **DAM:** BALD BLAIR K77<sup>PV</sup>  
 D: BALD BLAIR G7 D: BALD BLAIR C109

JULY 2019 ANGUS AUSTRALIA BREEDPLAN																
CED	CEM	GL	BW	200 D	400 D	600 D	MCW	MILK	DC	SS	CWT	EMA	RIB	RUMP	RBV%	IMF%
+0.0	-0.4	-3.3	+4.4	+52	+88	+130	+125	+12	-3.2	+2.9	+55	+5.5	+0.3	+2.0	-0.5	+3.1
55%	38%	73%	74%	71%	70%	74%	67%	58%	41%	72%	63%	61%	65%	62%	57%	61%

\$ INDEX VALUES				BREEDING TYPE AND STRUCTURAL ASSESSMENT									
Angus Breeding	Domestic Index	Heavy Grain Index	Heavy Grass Index	Stat	Cap	BL	Ft Ft	Bk Ft	Leg Ang	P. Ang	Muscle	Doability	Sheath
<b>+\$133</b>	<b>+\$109</b>	<b>+\$149</b>	<b>+\$127</b>	25	38	29	23	24	26	23	38	32	4

Traits observed: BWT,200WT,400WT,600WT,SC,Scan(EMA,Rib,Rump,IMF),DOC,Genomics(CE,S-Step)

Semen Motility  Scrotal Circumference 41.5cm Semen Morphology 75%  
**Vaccinated:** Pestigard, Vibrio, Lepto.

Purchaser: .....\$.....





# Bald Blair Bulls Rising 2 Years

Denotes EBVs in Top 10% of Angus Breed



## LOT 26 BALD BLAIR N302<sup>PV</sup> APR

**BORN:** 4/09/2017      **GENETIC STATUS:** AMFU,CAFU,DDFU,NHFU      **SOCIETY ID:** NBBN302  
 S: SYDGEN BLACK PEARL 2006      S: BALD BLAIR HORATIO H94  
**SIRE:** BALD BLAIR BLACK PEARL L52<sup>PV</sup>      **DAM:** BALD BLAIR K212<sup>PV</sup>  
 D: BALD BLAIR E148      D: BALD BLAIR G99

JULY 2019 ANGUS AUSTRALIA BREEDPLAN																
CED	CEM	GL	BW	200 D	400 D	600 D	MCW	MILK	DC	SS	CWT	EMA	RIB	RUMP	RBV%	IMF%
+1.8	+2.0	-5.6	+3.8	+55	+92	+124	+115	+13	-4.5	+2.3	+71	+5.4	-0.8	-1.5	+1.0	+1.9
53%	37%	69%	72%	67%	67%	71%	65%	56%	35%	70%	58%	56%	60%	57%	52%	55%

\$ INDEX VALUES				BREEDING TYPE AND STRUCTURAL ASSESSMENT									
Angus Breeding	Domestic Index	Heavy Grain Index	Heavy Grass Index	Stat	Cap	BL	Ft Ft	Bk Ft	Leg Ang	P. Ang	Muscle	Doability	Sheath
+\$129	+\$119	+\$138	+\$125	24	38	27	22	23	26	23	39	32	4

Traits observed: BWT,200WT,400WT,600WT,SC,Scan(EMA,Rib,Rump,IMF),DOC,Genomics(CE,S-Step)



Semen Motility  Scrotal Circumference 39.5cm Semen Morphology 80%  
**Vaccinated:** Pestigard, Vibrio, Lepto.

Purchaser: .....\$.....

## LOT 27 BALD BLAIR NEPTUNE N296<sup>PV</sup> HBR

**BORN:** 3/09/2017      **GENETIC STATUS:** AMFU,CAFU,DDFU,NHFU      **SOCIETY ID:** NBBN296  
 S: CONNEALY RIGHT ANSWER 746      S: BALD BLAIR TEN X J71  
**SIRE:** BALD BLAIR RIGHT ANSWER J9<sup>PV</sup>      **DAM:** BALD BLAIR L240<sup>PV</sup>  
 D: BALD BLAIR G123      D: BALD BLAIR A29

JULY 2019 ANGUS AUSTRALIA BREEDPLAN																
CED	CEM	GL	BW	200 D	400 D	600 D	MCW	MILK	DC	SS	CWT	EMA	RIB	RUMP	RBV%	IMF%
-1.2	+0.4	-5.2	+5.8	+60	+104	+138	+118	+17	-2.0	+1.3	+72	+8.1	-1.1	-2.0	+1.9	+1.0
54%	38%	71%	73%	70%	69%	73%	67%	57%	37%	72%	61%	60%	63%	60%	55%	59%

\$ INDEX VALUES				BREEDING TYPE AND STRUCTURAL ASSESSMENT									
Angus Breeding	Domestic Index	Heavy Grain Index	Heavy Grass Index	Stat	Cap	BL	Ft Ft	Bk Ft	Leg Ang	P. Ang	Muscle	Doability	Sheath
+\$125	+\$119	+\$126	+\$126	24	39	27	22	23	27	23	38	33	4

Traits observed: BWT,200WT,400WT,600WT,SC,Scan(EMA,Rib,Rump,IMF),DOC,Genomics(CE,S-Step)



Semen Motility  Scrotal Circumference 37.5cm Semen Morphology 71.5%  
**Vaccinated:** Pestigard, Vibrio, Lepto.

Purchaser: .....\$.....

## LOT 28 BALD BLAIR NEPTUNE N231<sup>PV</sup> HBR

**BORN:** 13/08/2017      **GENETIC STATUS:** AMFU,CAFU,DDFU,NHFU      **SOCIETY ID:** NBBN231  
 S: CONNEALY RIGHT ANSWER 746      S: S A V THUNDERBIRD 9061  
**SIRE:** BALD BLAIR RIGHT ANSWER J9<sup>PV</sup>      **DAM:** BALD BLAIR L74<sup>PV</sup>  
 D: BALD BLAIR G123      D: BALD BLAIR J142

JULY 2019 ANGUS AUSTRALIA BREEDPLAN																
CED	CEM	GL	BW	200 D	400 D	600 D	MCW	MILK	DC	SS	CWT	EMA	RIB	RUMP	RBV%	IMF%
+1.0	+0.1	-7.6	+4.5	+59	+99	+129	+98	+19	-1.6	+0.9	+70	+9.4	-0.9	-3.1	+2.6	+0.4
56%	41%	74%	74%	71%	70%	74%	68%	59%	40%	73%	63%	62%	65%	62%	57%	61%

\$ INDEX VALUES				BREEDING TYPE AND STRUCTURAL ASSESSMENT									
Angus Breeding	Domestic Index	Heavy Grain Index	Heavy Grass Index	Stat	Cap	BL	Ft Ft	Bk Ft	Leg Ang	P. Ang	Muscle	Doability	Sheath
+\$119	+\$121	+\$111	+\$124	22	40	25	22	23	26	24	41	31	5

Traits observed: CE,BWT,200WT,400WT,600WT,SC,Scan(EMA,Rib,Rump,IMF),DOC,Genomics(CE,S-Step)



Semen Motility  Scrotal Circumference 37.5cm Semen Morphology 74.5%  
**Vaccinated:** Pestigard, Vibrio, Lepto.

Purchaser: .....\$.....

## LOT 29 BALD BLAIR NIKOLAI N237<sup>SV</sup> APR

**BORN:** 15/08/2017      **GENETIC STATUS:** AMFU,CAFU,DDFU,NHFU      **SOCIETY ID:** NBBN237  
 S: BALD BLAIR DAVID G105      S: BALD BLAIR DEBONAIR D34  
**SIRE:** BALD BLAIR KEEGAN K279<sup>PV</sup>      **DAM:** BALD BLAIR K127<sup>#</sup>  
 D: BALD BLAIR G7      D: BALD BLAIR E152

JULY 2019 ANGUS AUSTRALIA BREEDPLAN																
CED	CEM	GL	BW	200 D	400 D	600 D	MCW	MILK	DC	SS	CWT	EMA	RIB	RUMP	RBV%	IMF%
+0.1	-0.9	-4.3	+3.1	+39	+68	+83	+62	+15	-8.0	+2.1	+33	+5.2	+1.7	+4.4	-1.2	+2.5
54%	37%	73%	74%	70%	69%	73%	67%	57%	39%	71%	61%	60%	64%	61%	56%	59%

\$ INDEX VALUES				BREEDING TYPE AND STRUCTURAL ASSESSMENT									
Angus Breeding	Domestic Index	Heavy Grain Index	Heavy Grass Index	Stat	Cap	BL	Ft Ft	Bk Ft	Leg Ang	P. Ang	Muscle	Doability	Sheath
+\$109	+\$102	+\$109	+\$106	22	39	26	23	23	26	23	40	31	5

Traits observed: CE,BWT,200WT,400WT,600WT,SC,Scan(EMA,Rib,Rump,IMF),DOC,Genomics(CE,S-Step)



Semen Motility  Scrotal Circumference 37.5cm Semen Morphology 73%  
**Vaccinated:** Pestigard, Vibrio, Lepto.

Purchaser: .....\$.....

# Bald Blair Yearling Bulls

Denotes EBVs in Top 10% of Angus Breed

## LOT 30 BALD BLAIR PHEONIX P74<sup>PV</sup> APR

**BORN:** 17/07/2018      **GENETIC STATUS:** AMFU,CAFU,DDFU,NHFU      **SOCIETY ID:** NBBP74  
 S: H P C A INTENSITY      S: RENNYLEA F65  
**SIRE:** RENNYLEA L519<sup>PV</sup>      **DAM:** BALD BLAIR J150<sup>PV</sup>  
 D: RENNYLEA H414      D: BALD BLAIR G199

JULY 2019 ANGUS AUSTRALIA BREEDPLAN																
CED	CEM	GL	BW	200 D	400 D	600 D	MCW	MILK	DC	SS	CWT	EMA	RIB	RUMP	RBY%	IMF%
+3.3	+0.8	-7.3	+2.7	+46	+83	+102	+85	+21	-4.3	+0.9	+60	+9.5	-0.6	-1.0	+0.9	+3.2
56%	38%	85%	74%	71%	68%	69%	66%	59%	38%	63%	62%	59%	63%	60%	56%	58%

\$ INDEX VALUES				BREEDING TYPE AND STRUCTURAL ASSESSMENT									
Angus Breeding	Domestic Index	Heavy Grain Index	Heavy Grass Index	Stat	Cap	BL	Ft Ft	Bk Ft	Leg Ang	P. Ang	Muscle	Doability	Sheath
+\$129	+\$122	+\$145	+\$120										

Traits observed: GL,BWT,200WT,DOC,Genomics(CE,S-Step)

**Cattle Vets** Semen Motility  Scrotal Circumference **34cm** Semen Morphology **81%**  
**Vaccinated:** Pestigard, Vibrio, Lepto.

Purchaser: .....\$.....

## LOT 31 BALD BLAIR PROCEED P124<sup>PV</sup> HBR

**BORN:** 22/07/2018      **GENETIC STATUS:** AMFU,CAFU,DDFU,NHFU      **SOCIETY ID:** NBBP124  
 S: G A R PROGRESS      S: B/R FUTURE DIRECTION 4268  
**SIRE:** H P C A PROCEED#      **DAM:** BALD BLAIR G68<sup>SV</sup>  
 D: G A R 28 AMBUSH L119      D: BALD BLAIR X14

JULY 2019 ANGUS AUSTRALIA BREEDPLAN																
CED	CEM	GL	BW	200 D	400 D	600 D	MCW	MILK	DC	SS	CWT	EMA	RIB	RUMP	RBY%	IMF%
-2.1	+0.5	-1.5	+5.6	+57	+97	+122	+107	+15	-2.7	+1.4	+68	+6.4	-0.7	-1.4	+0.4	+3.0
61%	48%	85%	75%	73%	72%	72%	70%	65%	43%	69%	65%	64%	67%	64%	60%	63%

\$ INDEX VALUES				BREEDING TYPE AND STRUCTURAL ASSESSMENT									
Angus Breeding	Domestic Index	Heavy Grain Index	Heavy Grass Index	Stat	Cap	BL	Ft Ft	Bk Ft	Leg Ang	P. Ang	Muscle	Doability	Sheath
+\$122	+\$116	+\$136	+\$116										

Traits observed: GL,BWT,200WT,DOC,Genomics(CE,S-Step)

**Cattle Vets** Semen Motility  Scrotal Circumference **33cm** Semen Morphology **n.a.**  
**Vaccinated:** Pestigard, Vibrio, Lepto.

Purchaser: .....\$.....

## LOT 32 BALD BLAIR PHEONIX P115<sup>PV</sup> APR

**BORN:** 21/07/2018      **GENETIC STATUS:** AMFU,CAFU,DDFU,NHFU      **SOCIETY ID:** NBBP115  
 S: H P C A INTENSITY      S: RENNYLEA F65  
**SIRE:** RENNYLEA L519<sup>PV</sup>      **DAM:** BALD BLAIR J168<sup>PV</sup>  
 D: RENNYLEA H414      D: BALD BLAIR G46

JULY 2019 ANGUS AUSTRALIA BREEDPLAN																
CED	CEM	GL	BW	200 D	400 D	600 D	MCW	MILK	DC	SS	CWT	EMA	RIB	RUMP	RBY%	IMF%
+2.9	+0.5	-4.6	+1.1	+46	+86	+110	+79	+25	-6.9	+2.1	+62	+6.3	+2.7	+2.9	-1.2	+2.9
56%	38%	85%	74%	71%	68%	69%	66%	59%	38%	63%	61%	58%	62%	59%	55%	58%

\$ INDEX VALUES				BREEDING TYPE AND STRUCTURAL ASSESSMENT									
Angus Breeding	Domestic Index	Heavy Grain Index	Heavy Grass Index	Stat	Cap	BL	Ft Ft	Bk Ft	Leg Ang	P. Ang	Muscle	Doability	Sheath
+\$132	+\$117	+\$140	+\$126										

Traits observed: GL,BWT,200WT,DOC,Genomics(CE,S-Step)

**Cattle Vets** Semen Motility  Scrotal Circumference **35cm** Semen Morphology **84%**  
**Vaccinated:** Pestigard, Vibrio, Lepto.

Purchaser: .....\$.....

**DANDYLEA KELPIE STUD**  
**DAN VIDLER 0403930058**  
 GUYRA N.S.W 2365  
 danvidler1@gmail.com

'Dandylea' is a small kelpie stud breeding dogs with natural ability with a desire to get the job done.

Our aim is to breed all round dogs that are versatile enough to excell in all aspects of station work and the trial arena.

We have pups started and fully trained dogs available.



**Contact: Dan Vidler 0403 930 058 • Email: danvidler1@gmail.com**

# Bald Blair Yearling Bulls

Denotes EBVs in Top 10% of Angus Breed



## LOT 33 BALD BLAIR PROCEED P233<sup>PV</sup> HBR

**BORN:** 9/08/2018      **GENETIC STATUS:** AMFU,CAFU,DDFU,NHFU      **SOCIETY ID:** NBBP233  
 S: G A R PROGRESS      S: SYDGEN BLACK PEARL 2006  
**SIRE:** H P C A PROCEED#      **DAM:** BALD BLAIR PEARL M159<sup>PV</sup>  
 D: G A R 28 AMBUSH L119      D: BALD BLAIR G161

JULY 2019 ANGUS AUSTRALIA BREEDPLAN																
CED	CEM	GL	BW	200 D	400 D	600 D	MCW	MILK	DC	SS	CWT	EMA	RIB	RUMP	RBV%	IMF%
+0.9	+3.3	-3.9	+6.5	+60	+106	+142	+122	+20	-3.7	+2.3	+82	+8.1	-1.6	-1.6	+1.7	+2.5
60%	47%	72%	73%	72%	70%	71%	67%	62%	41%	68%	64%	63%	65%	63%	59%	62%

\$ INDEX VALUES				BREEDING TYPE AND STRUCTURAL ASSESSMENT									
Angus Breeding	Domestic Index	Heavy Grain Index	Heavy Grass Index	Stat	Cap	BL	Ft Ft	Bk Ft	Leg Ang	P. Ang	Muscle	Doability	Sheath
+\$153	+\$135	+\$173	+\$145										

Traits observed: BWT,200WT,DOC,Genomics(CE,S-Step)

**Cattle Vets** Semen Motility  Scrotal Circumference **30.5cm** Semen Morphology **n.a.**  
**Vaccinated:** Pestigard, Vibrio, Lepto.

Purchaser: .....\$.....

## LOT 34 BALD BLAIR GRAVITY P13<sup>PV</sup> APR

**BORN:** 10/07/2018      **GENETIC STATUS:** AMFU,CAFU,DDFU,NHFU      **SOCIETY ID:** NBBP13  
 S: TE MANIA AFRICA A217      S: BALD BLAIR RIGHT ANSWER J9  
**SIRE:** BOONAROO GRAVITY G13 G013<sup>PV</sup>      **DAM:** BALD BLAIR M172<sup>PV</sup>  
 D: TE MANIA LOWAN Z618      D: BALD BLAIR K263

JULY 2019 ANGUS AUSTRALIA BREEDPLAN																
CED	CEM	GL	BW	200 D	400 D	600 D	MCW	MILK	DC	SS	CWT	EMA	RIB	RUMP	RBV%	IMF%
+0.9	-0.8	-5.3	+5.7	+57	+100	+130	+108	+27	-6.1	+2.2	+69	+6.5	-1.2	-1.7	+1.4	+2.5
57%	43%	84%	73%	70%	69%	69%	66%	58%	43%	65%	63%	62%	66%	62%	58%	61%

\$ INDEX VALUES				BREEDING TYPE AND STRUCTURAL ASSESSMENT									
Angus Breeding	Domestic Index	Heavy Grain Index	Heavy Grass Index	Stat	Cap	BL	Ft Ft	Bk Ft	Leg Ang	P. Ang	Muscle	Doability	Sheath
+\$142	+\$127	+\$160	+\$133										

Traits observed: GL,BWT,200WT,DOC,Genomics(CE,S-Step)

**Cattle Vets** Semen Motility  Scrotal Circumference **31.5cm** Semen Morphology **79%**  
**Vaccinated:** Pestigard, Vibrio, Lepto.

Purchaser: .....\$.....

## LOT 35 BALD BLAIR CAPITLAIST P193<sup>PV</sup> HBR

**BORN:** 2/08/2018      **GENETIC STATUS:** AMFU,CAFU,DDFU,NHFU      **SOCIETY ID:** NBBP193  
 S: CONNEALY CAPITALIST 028      S: BALD BLAIR RIGHT ANSWER J94  
**SIRE:** LD CAPITALIST 316<sup>SV</sup>      **DAM:** BALD BLAIR M49<sup>PV</sup>  
 D: LD DIXIE ERICA 2053      D: BALD BLAIR C8

JULY 2019 ANGUS AUSTRALIA BREEDPLAN																
CED	CEM	GL	BW	200 D	400 D	600 D	MCW	MILK	DC	SS	CWT	EMA	RIB	RUMP	RBV%	IMF%
+3.7	+3.3	-6.1	+3.8	+62	+116	+147	+116	+21	-1.4	+1.0	+86	+6.8	-0.8	-1.4	+0.6	+2.0
58%	36%	74%	73%	72%	69%	68%	63%	57%	37%	64%	63%	60%	64%	60%	57%	60%

\$ INDEX VALUES				BREEDING TYPE AND STRUCTURAL ASSESSMENT									
Angus Breeding	Domestic Index	Heavy Grain Index	Heavy Grass Index	Stat	Cap	BL	Ft Ft	Bk Ft	Leg Ang	P. Ang	Muscle	Doability	Sheath
+\$142	+\$134	+\$150	+\$141										

Traits observed: BWT,200WT,DOC,Genomics(CE,S-Step)

**Cattle Vets** Semen Motility  Scrotal Circumference **31cm** Semen Morphology **n.a.**  
**Vaccinated:** Pestigard, Vibrio, Lepto.

Purchaser: .....\$.....



**KLABE**  
**GROUND SPREADING**  
 For all your  
 fertilizer  
 spreading  
 requirements  
 Phone  
**Dan Klabe**  
**0428 758 356**

# Bald Blair Yearling Bulls

Denotes EBVs in Top 10% of Angus Breed

## LOT 36 BALD BLAIR PROCEED P134<sup>PV</sup> APR

**BORN:** 23/07/2018 **GENETIC STATUS:** AMFU,CAFU,DDFU,NHFU **SOCIETY ID:** NBBP134  
 S: G A R PROGRESS S: B/R FUTURE DIRECTION 4268  
**SIRE:** H P C A PROCEED# **DAM:** BALD BLAIR G142<sup>PV</sup>  
 D: G A R 28 AMBUSH L119 D: BALD BLAIR C155

JULY 2019 ANGUS AUSTRALIA BREEDPLAN																
CED	CEM	GL	BW	200 D	400 D	600 D	MCW	MILK	DC	SS	CWT	EMA	RIB	RUMP	RBY%	IMF%
-0.8	+0.9	-1.3	+3.4	+49	+86	+115	+83	+22	-3.0	+0.8	+63	+3.7	-1.6	-1.9	+0.0	+3.7
61%	46%	85%	75%	72%	71%	72%	69%	63%	41%	67%	64%	63%	66%	63%	59%	62%

\$ INDEX VALUES				BREEDING TYPE AND STRUCTURAL ASSESSMENT									
Angus Breeding	Domestic Index	Heavy Grain Index	Heavy Grass Index	Stat	Cap	BL	Ft Ft	Bk Ft	Leg Ang	P. Ang	Muscle	Doability	Sheath
+\$122	+\$111	+\$142	+\$114										

Traits observed: GL,BWT,200WT,DOC,Genomics(CE,S-Step)

**Cattle Vets** Semen Motility  Scrotal Circumference **32cm** Semen Morphology **n.a.**  
**Vaccinated:** Pestigard, Vibrio, Lepto.

Purchaser: .....\$.....

## LOT 37 BALD BLAIR LEGEND P155<sup>PV</sup> APR

**BORN:** 26/07/2018 **GENETIC STATUS:** AMFU,CAFU,DDFU,NHFU **SOCIETY ID:** NBBP155  
 S: MATAURI REALITY 839 S: BALD BLAIR DAVID G105  
**SIRE:** CLUNIE RANGE LEGEND L348<sup>PV</sup> **DAM:** BALD BLAIR L164<sup>PV</sup>  
 D: ABERDEEN ESTATE LAURA J81 D: BALD BLAIR F162

JULY 2019 ANGUS AUSTRALIA BREEDPLAN																
CED	CEM	GL	BW	200 D	400 D	600 D	MCW	MILK	DC	SS	CWT	EMA	RIB	RUMP	RBY%	IMF%
-3.3	+0.0	-5.4	+6.8	+56	+95	+124	+123	+6	-5.4	+2.2	+59	+4.8	-0.4	-1.3	+1.0	+2.2
57%	39%	84%	74%	71%	69%	70%	66%	57%	40%	66%	62%	61%	64%	61%	57%	60%

\$ INDEX VALUES				BREEDING TYPE AND STRUCTURAL ASSESSMENT									
Angus Breeding	Domestic Index	Heavy Grain Index	Heavy Grass Index	Stat	Cap	BL	Ft Ft	Bk Ft	Leg Ang	P. Ang	Muscle	Doability	Sheath
+\$125	+\$114	+\$140	+\$118										

Traits observed: GL,BWT,200WT,DOC,Genomics(CE,S-Step)

**Cattle Vets** Semen Motility  Scrotal Circumference **32.5cm** Semen Morphology **n.a.**  
**Vaccinated:** Pestigard, Vibrio, Lepto.

Purchaser: .....\$.....

## LOT 38 BALD BLAIR GRAVITY P19<sup>PV</sup> HBR

**BORN:** 10/07/2018 **GENETIC STATUS:** AMFU,CAFU,DDFU,NHFU **SOCIETY ID:** NBBP19  
 S: TE MANIA AFRICA A217 S: AYRVALE BARTEL E7  
**SIRE:** BOONAROO GRAVITY G13 G013<sup>PV</sup> **DAM:** BALD BLAIR M152<sup>PV</sup>  
 D: TE MANIA LOWAN Z618 D: BALD BLAIR K151

JULY 2019 ANGUS AUSTRALIA BREEDPLAN																
CED	CEM	GL	BW	200 D	400 D	600 D	MCW	MILK	DC	SS	CWT	EMA	RIB	RUMP	RBY%	IMF%
+3.8	+2.6	-6.0	+2.2	+49	+87	+118	+95	+24	-6.5	+2.9	+64	+9.3	-0.8	-1.2	+1.7	+1.4
59%	47%	85%	73%	71%	69%	70%	65%	60%	47%	66%	65%	64%	67%	64%	60%	63%

\$ INDEX VALUES				BREEDING TYPE AND STRUCTURAL ASSESSMENT									
Angus Breeding	Domestic Index	Heavy Grain Index	Heavy Grass Index	Stat	Cap	BL	Ft Ft	Bk Ft	Leg Ang	P. Ang	Muscle	Doability	Sheath
+\$136	+\$123	+\$142	+\$132										

Traits observed: GL,BWT,200WT,DOC,Genomics(CE,S-Step)

**Cattle Vets** Semen Motility  Scrotal Circumference **35cm** Semen Morphology **n.a.**  
**Vaccinated:** Pestigard, Vibrio, Lepto.

Purchaser: .....\$.....



## Lenehan Contract Services:

- Boom Spraying - landcruiser mounted uniboom and tractor pulled Croplands Pinto
- Direct Drilling - 6m Serafin disc air seeder.
- All equipment GPS guided.

Enquiries contact

Jim Lenehan  
0422 197 919

Rob Lenehan  
0412 669 373

# Bald Blair Yearling Bulls

Denotes EBVs in Top 10% of Angus Breed




## LOT 39 BALD BLAIR PHEONIX P65<sup>SV</sup> APR

**BORN:** 16/07/2018      **GENETIC STATUS:** AMFU,CAFU,DDFU,NHFU      **SOCIETY ID:** NBBP65  
 S: H P C A INTENSITY      S: RENNYLEA F65  
**SIRE:** RENNYLEA L519<sup>PV</sup>      **DAM:** BALD BLAIR K208<sup>#</sup>  
 D: RENNYLEA H414      D: BALD BLAIR E21

JULY 2019 ANGUS AUSTRALIA BREEDPLAN																
CED	CEM	GL	BW	200 D	400 D	600 D	MCW	MILK	DC	SS	CWT	EMA	RIB	RUMP	RBV%	IMF%
+2.1	-0.3	-6.8	+4.0	+48	+88	+115	+95	+21	-4.5	+1.0	+64	+5.4	-1.5	-3.1	+1.1	+3.0
56%	38%	84%	74%	71%	68%	69%	65%	57%	38%	63%	60%	58%	62%	59%	55%	57%

\$ INDEX VALUES				BREEDING TYPE AND STRUCTURAL ASSESSMENT									
Angus Breeding	Domestic Index	Heavy Grain Index	Heavy Grass Index	Stat	Cap	BL	Ft Ft	Bk Ft	Leg Ang	P. Ang	Muscle	Doability	Sheath
+\$130	+\$119	+\$151	+\$120										

Traits observed: GL,BWT,200WT,DOC,Genomics(CE,S-Step)

 Semen Motility  Scrotal Circumference **30cm** Semen Morphology **n.a.**  
**Vaccinated:** Pestigard, Vibrio, Lepto.

Purchaser: .....\$.....


## LOT 40 BALD BLAIR PHEONIX P95<sup>PV</sup> APR

**BORN:** 19/07/2018      **GENETIC STATUS:** AMFU,CAFU,DDFU,NHFU      **SOCIETY ID:** NBBP95  
 S: H P C A INTENSITY      S: KENNY'S CREEK REGENT G213  
**SIRE:** RENNYLEA L519<sup>PV</sup>      **DAM:** BALD BLAIR K62<sup>PV</sup>  
 D: RENNYLEA H414      D: BALD BLAIR C155

JULY 2019 ANGUS AUSTRALIA BREEDPLAN																
CED	CEM	GL	BW	200 D	400 D	600 D	MCW	MILK	DC	SS	CWT	EMA	RIB	RUMP	RBV%	IMF%
+3.2	+1.7	-6.2	+3.2	+42	+75	+95	+90	+19	-5.3	-0.2	+55	+5.0	+0.0	-0.4	-0.1	+3.0
56%	40%	85%	74%	71%	68%	69%	65%	58%	38%	63%	60%	58%	62%	59%	54%	57%

\$ INDEX VALUES				BREEDING TYPE AND STRUCTURAL ASSESSMENT									
Angus Breeding	Domestic Index	Heavy Grain Index	Heavy Grass Index	Stat	Cap	BL	Ft Ft	Bk Ft	Leg Ang	P. Ang	Muscle	Doability	Sheath
+\$114	+\$108	+\$128	+\$107										

Traits observed: GL,BWT,200WT,DOC,Genomics(CE,S-Step)

 Semen Motility  Scrotal Circumference **32cm** Semen Morphology **71.5%**  
**Vaccinated:** Pestigard, Vibrio, Lepto.

Purchaser: .....\$.....


## LOT 41 BALD BLAIR PHEONIX P46<sup>PV</sup> APR

**BORN:** 14/07/2018      **GENETIC STATUS:** AMFU,CAFU,DDFU,NHFU      **SOCIETY ID:** NBBP46  
 S: H P C A INTENSITY      S: TE MANIA INFINITY 04 379 AB  
**SIRE:** RENNYLEA L519<sup>PV</sup>      **DAM:** BALD BLAIR G31<sup>PV</sup>  
 D: RENNYLEA H414      D: BALD BLAIR E49

JULY 2019 ANGUS AUSTRALIA BREEDPLAN																
CED	CEM	GL	BW	200 D	400 D	600 D	MCW	MILK	DC	SS	CWT	EMA	RIB	RUMP	RBV%	IMF%
+2.5	+1.1	-7.7	+0.5	+34	+68	+79	+54	+16	-7.5	+2.0	+47	+4.9	+1.8	+2.6	-1.6	+3.5
57%	43%	85%	73%	72%	69%	70%	67%	60%	42%	64%	63%	60%	64%	61%	57%	60%

\$ INDEX VALUES				BREEDING TYPE AND STRUCTURAL ASSESSMENT									
Angus Breeding	Domestic Index	Heavy Grain Index	Heavy Grass Index	Stat	Cap	BL	Ft Ft	Bk Ft	Leg Ang	P. Ang	Muscle	Doability	Sheath
+\$115	+\$108	+\$126	+\$107										

Traits observed: GL,200WT,DOC,Genomics(CE,S-Step)

 Semen Motility  Scrotal Circumference **34.5cm** Semen Morphology **n.a.**  
**Vaccinated:** Pestigard, Vibrio, Lepto.

Purchaser: .....\$.....


## LOT 42 BALD BLAIR CAPITALIST P8<sup>PV</sup> HBR

**BORN:** 8/07/2018      **GENETIC STATUS:** AMFU,CAFU,DDFU,NHFU      **SOCIETY ID:** NBBP8  
 S: CONNEALY CAPITALIST 028      S: ALPINE JUSTICE J108  
**SIRE:** LD CAPITALIST 316<sup>SV</sup>      **DAM:** BALD BLAIR M305<sup>PV</sup>  
 D: LD DIXIE ERICA 2053      D: BALD BLAIR F60

JULY 2019 ANGUS AUSTRALIA BREEDPLAN																
CED	CEM	GL	BW	200 D	400 D	600 D	MCW	MILK	DC	SS	CWT	EMA	RIB	RUMP	RBV%	IMF%
+3.4	+1.1	-6.0	+5.9	+61	+103	+128	+135	+5	-2.3	-0.5	+78	+7.9	+1.1	-0.5	+0.2	+2.1
57%	37%	84%	73%	72%	69%	68%	65%	57%	36%	64%	62%	60%	63%	59%	56%	59%

\$ INDEX VALUES				BREEDING TYPE AND STRUCTURAL ASSESSMENT									
Angus Breeding	Domestic Index	Heavy Grain Index	Heavy Grass Index	Stat	Cap	BL	Ft Ft	Bk Ft	Leg Ang	P. Ang	Muscle	Doability	Sheath
+\$126	+\$122	+\$133	+\$124										

Traits observed: GL,BWT,200WT,DOC,Genomics(CE,S-Step)

 Semen Motility  Scrotal Circumference **27.5cm** Semen Morphology **93%**  
**Vaccinated:** Pestigard, Vibrio, Lepto.

Purchaser: .....\$.....



# Bald Blair Bulls Rising 2 Years

Denotes EBVs in Top 10% of Angus Breed

## LOT 43 BALD BLAIR TRACTION N145<sup>PV</sup> HBR

**BORN:** 25/07/2017 **GENETIC STATUS:** AMFU,CAFU,DDFU,NHFU **SOCIETY ID:** NBBN145  
 S: SITZ TOP GAME 561X S: B/R FUTURE DIRECTION 4268  
**SIRE:** JMB TRACTION 292<sup>PV</sup> **DAM:** BALD BLAIR H108<sup>PV</sup>  
 D: JMB EMULOTA 013 D: BALD BLAIR E112

JULY 2019 ANGUS AUSTRALIA BREEDPLAN																
CED	CEM	GL	BW	200 D	400 D	600 D	MCW	MILK	DC	SS	CWT	EMA	RIB	RUMP	RBV%	IMF%
-2.3	-0.5	-1.7	+3.4	+52	+94	+124	+89	+23	-2.8	+0.7	+71	+7.9	-1.5	-2.3	+1.3	+2.0
59%	43%	85%	75%	72%	71%	74%	68%	62%	38%	73%	63%	62%	65%	62%	58%	61%

\$ INDEX VALUES				BREEDING TYPE AND STRUCTURAL ASSESSMENT									
Angus Breeding	Domestic Index	Heavy Grain Index	Heavy Grass Index	Stat	Cap	BL	Ft Ft	Bk Ft	Leg Ang	P. Ang	Muscle	Doability	Sheath
+\$121	+\$114	+\$127	+\$119	27	40	30	21	20	26	23	38	32	5

Traits observed: GL,CE,BWT,200WT,400WT,600WT,SC,Scan(EMA,Rib,Rump,IMF),DOC,Genomics(CE,S-Step)



Semen Motility  Scrotal Circumference **37.5cm** Semen Morphology **91%**  
**Vaccinated:** Pestigard, Vibrio, Lepto.

Purchaser: .....\$.....

## LOT 44 BALD BLAIR BIG SKY N160<sup>PV</sup> HBR

**BORN:** 27/07/2017 **GENETIC STATUS:** AMFU,CAFU,DDFU,NHFU **SOCIETY ID:** NBBN160  
 S: CONNEALY EARNAN 076E S: SITZ NEW DESIGN 458N  
**SIRE:** MUSGRAVE BIG SKY# **DAM:** BALD BLAIR G161<sup>PV</sup>  
 D: SAV PRIMROSE 7861 D: BALD BLAIR C36

JULY 2019 ANGUS AUSTRALIA BREEDPLAN																
CED	CEM	GL	BW	200 D	400 D	600 D	MCW	MILK	DC	SS	CWT	EMA	RIB	RUMP	RBV%	IMF%
-0.8	+2.5	-3.6	+6.2	+58	+102	+136	+124	+10	-4.4	+2.5	+73	+3.7	-1.8	-1.0	+0.9	+1.1
63%	51%	84%	76%	73%	72%	75%	69%	66%	43%	74%	65%	64%	66%	64%	60%	63%

\$ INDEX VALUES				BREEDING TYPE AND STRUCTURAL ASSESSMENT									
Angus Breeding	Domestic Index	Heavy Grain Index	Heavy Grass Index	Stat	Cap	BL	Ft Ft	Bk Ft	Leg Ang	P. Ang	Muscle	Doability	Sheath
+\$127	+\$118	+\$131	+\$126	27	39	31	22	23	26	23	38	31	5

Traits observed: GL,CE,BWT,200WT,400WT,600WT,SC,Scan(EMA,Rib,Rump,IMF),DOC,Genomics(CE,S-Step)



Semen Motility  Scrotal Circumference **42cm** Semen Morphology **92%**  
**Vaccinated:** Pestigard, Vibrio, Lepto.

Purchaser: .....\$.....

## LOT 45 BALD BLAIR BIG SKY N118<sup>PV</sup> APR

**BORN:** 7/06/2017 **GENETIC STATUS:** AMFU,CAFU,DDFU,NHFU **SOCIETY ID:** NBBN118  
 S: CONNEALY EARNAN 076E S: BALD BLAIR HIGHLANDER C126  
**SIRE:** MUSGRAVE BIG SKY# **DAM:** BALD BLAIR J263<sup>PV</sup>  
 D: SAV PRIMROSE 7861 D: BALD BLAIR D185

JULY 2019 ANGUS AUSTRALIA BREEDPLAN																
CED	CEM	GL	BW	200 D	400 D	600 D	MCW	MILK	DC	SS	CWT	EMA	RIB	RUMP	RBV%	IMF%
+0.2	+2.1	-2.4	+4.3	+47	+86	+115	+91	+15	-0.8	+2.4	+58	+4.7	-1.8	-1.4	+1.1	+1.0
61%	48%	73%	72%	72%	71%	71%	69%	64%	39%	68%	64%	63%	66%	63%	58%	62%

\$ INDEX VALUES				BREEDING TYPE AND STRUCTURAL ASSESSMENT									
Angus Breeding	Domestic Index	Heavy Grain Index	Heavy Grass Index	Stat	Cap	BL	Ft Ft	Bk Ft	Leg Ang	P. Ang	Muscle	Doability	Sheath
+\$102	+\$105	+\$97	+\$107	31	38	34	23	23	27	23	38	30	5

Traits observed: 400WT(x2),600WT,SC,Scan(EMA,Rib,Rump,IMF),Genomics(CE,S-Step)



Semen Motility  Scrotal Circumference **37cm** Semen Morphology **68.5%**  
**Vaccinated:** Pestigard, Vibrio, Lepto.

Purchaser: .....\$.....



Call in and see Braidie and the team at  
**The Guyra Café**  
 for delicious meals, cakes, slices & underground coffee!  
**Phone orders welcome!**  
 110 - 112 Bradley Street, Guyra.  
 Phone (02) 6779 1605  
**Opening Hours** Wed 6.30am - 5pm Thurs 6.30am - 6.30pm  
 Fri 6.30am - 7pm Sat & Sun 8.30am - 2pm

# Bald Blair Bulls Rising 2 Years

Denotes EBVs in Top 10% of Angus Breed



## LOT 46 BALD BLAIR NIKOLAI N209<sup>PV</sup> HBR

**BORN:** 6/08/2017      **GENETIC STATUS:** AMFU,CAFU,DDFU,NHFU      **SOCIETY ID:** NBBN209  
 S: CONNEALY RIGHT ANSWER 746      S: CONNEALY KW 1664 CONSENSUS  
**SIRE:** BALD BLAIR RIGHT ANSWER J94<sup>PV</sup>      **DAM:** BALD BLAIR K242<sup>SV</sup>  
 D: BALD BLAIR G152      D: BALD BLAIR X14

JULY 2019 ANGUS AUSTRALIA BREEDPLAN																
CED	CEM	GL	BW	200 D	400 D	600 D	MCW	MILK	DC	SS	CWT	EMA	RIB	RUMP	RBV%	IMF%
-0.4	+1.0	-0.8	+5.8	+65	+108	+139	+96	+22	-4.8	+3.9	+78	+3.5	-0.7	-1.5	+0.8	+2.0
56%	40%	72%	71%	71%	69%	72%	67%	60%	41%	72%	65%	64%	67%	64%	61%	63%

\$ INDEX VALUES				BREEDING TYPE AND STRUCTURAL ASSESSMENT									
Angus Breeding	Domestic Index	Heavy Grain Index	Heavy Grass Index	Stat	Cap	BL	Ft Ft	Bk Ft	Leg Ang	P. Ang	Muscle	Doability	Sheath
<b>+\$136</b>	<b>+\$127</b>	<b>+\$144</b>	<b>+\$132</b>	26	38	30	22	23	27	23	38	30	5

Traits observed: CE,200WT,400WT,600WT,SC,Scan(EMA,Rib,Rump,IMF),DOC,Genomics(CE,S-Step)

Semen Motility  Scrotal Circumference 42cm Semen Morphology 85%  
**Vaccinated:** Pestigard, Vibrio, Lepto.

Purchaser: .....\$.....

## LOT 47 BALD BLAIR TRACTION N273<sup>PV</sup> HBR

**BORN:** 25/08/2017      **GENETIC STATUS:** AMFU,CAFU,DDFU,NHFU      **SOCIETY ID:** NBBN273  
 S: SITZ TOP GAME 561X      S: RITO 9M25 OF RITA 5F56 PRED  
**SIRE:** JMB TRACTION 292<sup>PV</sup>      **DAM:** BALD BLAIR K228<sup>SV</sup>  
 D: JMB EMULOTA 013      D: BALD BLAIR X14

JULY 2019 ANGUS AUSTRALIA BREEDPLAN																
CED	CEM	GL	BW	200 D	400 D	600 D	MCW	MILK	DC	SS	CWT	EMA	RIB	RUMP	RBV%	IMF%
-0.7	+0.1	-0.1	+3.9	+54	+98	+127	+86	+24	-3.2	+1.6	+74	+8.3	-2.0	-3.4	+1.7	+1.9
59%	42%	73%	74%	72%	71%	72%	67%	63%	38%	68%	64%	63%	66%	63%	59%	62%

\$ INDEX VALUES				BREEDING TYPE AND STRUCTURAL ASSESSMENT									
Angus Breeding	Domestic Index	Heavy Grain Index	Heavy Grass Index	Stat	Cap	BL	Ft Ft	Bk Ft	Leg Ang	P. Ang	Muscle	Doability	Sheath
<b>+\$128</b>	<b>+\$121</b>	<b>+\$136</b>	<b>+\$125</b>	29	39	33	21	23	26	24	38	30	5

Traits observed: BWT,200WT,400WT,600WT,SC,Scan(EMA,Rib,Rump,IMF),DOC,Genomics(CE,S-Step)

Semen Motility  Scrotal Circumference 41cm Semen Morphology 89%  
**Vaccinated:** Pestigard, Vibrio, Lepto.

Purchaser: .....\$.....

## LOT 48 BALD BLAIR BIG SKY N101<sup>PV</sup> APR

**BORN:** 19/07/2017      **GENETIC STATUS:** AMFU,CAFU,DDFU,NHFU      **SOCIETY ID:** NBBN101  
 S: CONNEALY EARNAN 076E      S: BALD BLAIR RIGHT ANSWER J94  
**SIRE:** MUSGRAVE BIG SKY\*      **DAM:** BALD BLAIR L147<sup>PV</sup>  
 D: SAV PRIMROSE 7861      D: BALD BLAIR G75

JULY 2019 ANGUS AUSTRALIA BREEDPLAN																
CED	CEM	GL	BW	200 D	400 D	600 D	MCW	MILK	DC	SS	CWT	EMA	RIB	RUMP	RBV%	IMF%
-3.4	+1.5	-0.6	+6.8	+63	+107	+139	+117	+12	-2.0	+1.6	+71	+7.5	-2.3	-2.2	+1.9	+1.5
60%	47%	85%	74%	71%	71%	73%	69%	62%	39%	73%	64%	63%	65%	62%	59%	62%

\$ INDEX VALUES				BREEDING TYPE AND STRUCTURAL ASSESSMENT									
Angus Breeding	Domestic Index	Heavy Grain Index	Heavy Grass Index	Stat	Cap	BL	Ft Ft	Bk Ft	Leg Ang	P. Ang	Muscle	Doability	Sheath
<b>+\$128</b>	<b>+\$122</b>	<b>+\$133</b>	<b>+\$127</b>	28	38	31	22	23	26	23	38	30	4

Traits observed: GL,CE,BWT,200WT,400WT,600WT,SC,Scan(EMA,Rib,Rump,IMF),DOC,Genomics(CE,S-Step)

Semen Motility  Scrotal Circumference 37cm Semen Morphology 86%  
**Vaccinated:** Pestigard, Vibrio, Lepto.

Purchaser: .....\$.....

## LOT 49 BALD BLAIR BLACK PEARL N68<sup>PV</sup> APR

**BORN:** 15/07/2017      **GENETIC STATUS:** AMFU,CAFU,DDFU,NHFU      **SOCIETY ID:** NBBN68  
 S: SYDGEN TRUST 6228      S: TC FRANKLIN 619  
**SIRE:** SYDGEN BLACK PEARL 2006<sup>PV</sup>      **DAM:** BALD BLAIR H50<sup>PV</sup>  
 D: SYDGEN ANITA 8611      D: BALD BLAIR F193

JULY 2019 ANGUS AUSTRALIA BREEDPLAN																
CED	CEM	GL	BW	200 D	400 D	600 D	MCW	MILK	DC	SS	CWT	EMA	RIB	RUMP	RBV%	IMF%
+2.5	+4.1	-8.3	+4.8	+56	+100	+141	+134	+12	-3.6	+0.9	+77	+2.3	-0.9	-1.5	-0.2	+1.9
63%	53%	85%	75%	72%	71%	74%	70%	65%	44%	73%	65%	64%	66%	64%	61%	63%

\$ INDEX VALUES				BREEDING TYPE AND STRUCTURAL ASSESSMENT									
Angus Breeding	Domestic Index	Heavy Grain Index	Heavy Grass Index	Stat	Cap	BL	Ft Ft	Bk Ft	Leg Ang	P. Ang	Muscle	Doability	Sheath
<b>+\$132</b>	<b>+\$116</b>	<b>+\$144</b>	<b>+\$128</b>	30	38	34	21	23	26	23	36	33	5

Traits observed: GL,CE,BWT,200WT,400WT,600WT,SC,Scan(EMA,Rib,Rump,IMF),DOC,Genomics(CE,S-Step)

Semen Motility  Scrotal Circumference 37cm Semen Morphology 73.5%  
**Vaccinated:** Pestigard, Vibrio, Lepto.

Purchaser: .....\$.....

# Bald Blair Bulls Rising 2 Years

Denotes EBVs in Top 10% of Angus Breed



## LOT 50 BALD BLAIR BIG SKY N189<sup>PV</sup> APR

**BORN:** 1/08/2017      **GENETIC STATUS:** AMFU,CAFU,DDFU,NHFU      **SOCIETY ID:** NBBN189  
 S: CONNEALY EARNAN 076E      S: S A V THUNDERBIRD 9061  
**SIRE:** MUSGRAVE BIG SKY#      **DAM:** BALD BLAIR K60<sup>PV</sup>  
 D: SAV PRIMROSE 7861      D: BALD BLAIR H251

JULY 2019 ANGUS AUSTRALIA BREEDPLAN																
CED	CEM	GL	BW	200 D	400 D	600 D	MCW	MILK	DC	SS	CWT	EMA	RIB	RUMP	RBY%	IMF%
+0.0	+1.6	-1.9	+3.4	+51	+90	+111	+87	+14	-3.4	+1.7	+62	+3.8	-0.6	-0.9	+0.5	+0.8
61%	49%	85%	74%	72%	70%	72%	69%	63%	39%	73%	64%	63%	65%	62%	58%	62%

\$ INDEX VALUES				BREEDING TYPE AND STRUCTURAL ASSESSMENT									
Angus Breeding	Domestic Index	Heavy Grain Index	Heavy Grass Index	Stat	Cap	BL	Ft Ft	Bk Ft	Leg Ang	P. Ang	Muscle	Doability	Sheath
+\$101	+\$108	+\$92	+\$106	29	38	32	21	22	26	23	38	31	5

Traits observed: GL,CE,BWT,200WT,400WT(x2),600WT,SC,Scan(EMA,Rib,Rump,IMF),DOC,Genomics(CE,S-Step)

Semen Motility  Scrotal Circumference 40.5cm Semen Morphology 87%  
**Vaccinated:** Pestigard, Vibrio, Lepto.

Purchaser: .....\$.....

## LOT 51 BALD BLAIR NEWTON N200<sup>PV</sup> HBR

**BORN:** 3/08/2017      **GENETIC STATUS:** AMFU,CAFU,DDFU,NHFU      **SOCIETY ID:** NBBN200  
 S: CONNEALY RIGHT ANSWER 746      S: KENNY'S CREEK REGENT G213  
**SIRE:** BALD BLAIR RIGHT ANSWER J94<sup>PV</sup>      **DAM:** BALD BLAIR K68<sup>PV</sup>  
 D: BALD BLAIR G152      D: BALD BLAIR F133

JULY 2019 ANGUS AUSTRALIA BREEDPLAN																
CED	CEM	GL	BW	200 D	400 D	600 D	MCW	MILK	DC	SS	CWT	EMA	RIB	RUMP	RBY%	IMF%
-1.0	-1.4	-1.2	+3.8	+50	+90	+114	+86	+24	-4.0	+4.1	+70	+6.1	-0.7	-0.5	+0.9	+1.7
56%	39%	85%	74%	71%	69%	71%	68%	60%	41%	66%	65%	64%	67%	64%	61%	63%

\$ INDEX VALUES				BREEDING TYPE AND STRUCTURAL ASSESSMENT									
Angus Breeding	Domestic Index	Heavy Grain Index	Heavy Grass Index	Stat	Cap	BL	Ft Ft	Bk Ft	Leg Ang	P. Ang	Muscle	Doability	Sheath
+\$112	+\$110	+\$113	+\$112	25	39	28	21	22	26	23	39	31	5

Traits observed: GL,CE,BWT,200WT,400WT,600WT,SC,Scan(EMA,Rib,Rump,IMF),DOC,Genomics(CE,S-Step)

Semen Motility  Scrotal Circumference 37.5cm Semen Morphology 76.5%  
**Vaccinated:** Pestigard, Vibrio, Lepto.

Purchaser: .....\$.....

## LOT 52 BALD BLAIR TRACTION N133<sup>PV</sup> HBR

**BORN:** 23/07/2017      **GENETIC STATUS:** AMFU,CAFU,DDFU,NHFU      **SOCIETY ID:** NBBN133  
 S: SITZ TOP GAME 561X      S: BALD BLAIR DEBONAIR D34  
**SIRE:** JMB TRACTION 292<sup>PV</sup>      **DAM:** BALD BLAIR J130<sup>PV</sup>  
 D: JMB EMULOTA 013      D: BALD BLAIR E152

JULY 2019 ANGUS AUSTRALIA BREEDPLAN																
CED	CEM	GL	BW	200 D	400 D	600 D	MCW	MILK	DC	SS	CWT	EMA	RIB	RUMP	RBY%	IMF%
+1.5	+0.4	-2.3	+2.3	+44	+94	+121	+92	+22	-5.1	+2.6	+59	+5.3	+0.3	+0.2	-0.1	+2.1
59%	42%	85%	75%	72%	71%	74%	68%	63%	38%	73%	64%	63%	66%	63%	58%	62%

\$ INDEX VALUES				BREEDING TYPE AND STRUCTURAL ASSESSMENT									
Angus Breeding	Domestic Index	Heavy Grain Index	Heavy Grass Index	Stat	Cap	BL	Ft Ft	Bk Ft	Leg Ang	P. Ang	Muscle	Doability	Sheath
+\$130	+\$118	+\$139	+\$126	23	39	27	22	21	28	22	40	32	5

Traits observed: GL,CE,BWT,200WT,400WT,600WT,SC,Scan(EMA,Rib,Rump,IMF),DOC,Genomics(CE,S-Step)

Semen Motility  Scrotal Circumference 39.5cm Semen Morphology 85%  
**Vaccinated:** Pestigard, Vibrio, Lepto.

Purchaser: .....\$.....

## LOT 53 BALD BLAIR NORRIS N122<sup>PV</sup> HBR

**BORN:** 21/07/2017      **GENETIC STATUS:** AMFU,CAFU,DDFU,NHFU      **SOCIETY ID:** NBBN122  
 S: AYRVALE BARTEL E7      S: EXAR UPSHOT 0562B  
**SIRE:** BOOROOMOOKA BARTEL K274<sup>SV</sup>      **DAM:** BALD BLAIR K224<sup>SV</sup>  
 D: BOOROOMOOKA VORACIOUS H465      D: BALD BLAIR X14

JULY 2019 ANGUS AUSTRALIA BREEDPLAN																
CED	CEM	GL	BW	200 D	400 D	600 D	MCW	MILK	DC	SS	CWT	EMA	RIB	RUMP	RBY%	IMF%
+3.7	+2.7	-6.2	+0.8	+50	+90	+118	+83	+21	-2.9	+0.7	+67	+5.2	-1.4	-1.8	+0.7	+2.0
58%	43%	85%	75%	71%	71%	74%	67%	58%	42%	73%	63%	62%	65%	62%	58%	61%

\$ INDEX VALUES				BREEDING TYPE AND STRUCTURAL ASSESSMENT									
Angus Breeding	Domestic Index	Heavy Grain Index	Heavy Grass Index	Stat	Cap	BL	Ft Ft	Bk Ft	Leg Ang	P. Ang	Muscle	Doability	Sheath
+\$123	+\$118	+\$127	+\$122	25	39	29	21	22	26	23	38	30	5

Traits observed: GL,CE,BWT,200WT,400WT,600WT,SC,Scan(EMA,Rib,Rump,IMF),DOC,Genomics(CE,S-Step)

Semen Motility  Scrotal Circumference 35.5cm Semen Morphology 89%  
**Vaccinated:** Pestigard, Vibrio, Lepto.

Purchaser: .....\$.....

# Bald Blair Bulls Rising 2 Years

Denotes EBVs in Top 10% of Angus Breed



## LOT 54 BALD BLAIR NORRIS N24<sup>PV</sup> HBR

**BORN:** 10/07/2017      **GENETIC STATUS:** AMFU,CAFU,DDFU,NHFU      **SOCIETY ID:** NBBN24  
 S: AYRVALE BARTEL E7      S: CONNEALY COMRADE 1385  
**SIRE:** BOOROOMOOKA BARTEL K274<sup>SV</sup>      **DAM:** BALD BLAIR L144<sup>SV</sup>  
 D: BOOROOMOOKA VORACIOUS H465      D: BALD BLAIR C94

JULY 2019 ANGUS AUSTRALIA BREEDPLAN																
CED	CEM	GL	BW	200 D	400 D	600 D	MCW	MILK	DC	SS	CWT	EMA	RIB	RUMP	RBV%	IMF%
+4.4	+3.7	-6.3	+0.9	+47	+87	+105	+73	+17	-5.7	+0.6	+69	+4.9	+0.2	-0.1	-0.2	+1.5
57%	41%	85%	74%	71%	70%	73%	67%	57%	40%	72%	62%	62%	64%	62%	57%	60%

\$ INDEX VALUES				BREEDING TYPE AND STRUCTURAL ASSESSMENT									
Angus Breeding	Domestic Index	Heavy Grain Index	Heavy Grass Index	Stat	Cap	BL	Ft Ft	Bk Ft	Leg Ang	P. Ang	Muscle	Doability	Sheath
+\$116	+\$117	+\$113	+\$117	23	38	26	22	21	26	23	37	30	5

Traits observed: GL,CE,BWT,200WT,400WT,600WT,SC,Scan(EMA,Rib,Rump,IMF),DOC,Genomics(CE,S-Step)



**Semen Motility**      **Scrotal Circumference**      **Semen Morphology**  
 ✓      33cm      88%  
**Vaccinated:** Pestigard, Vibrio, Lepto.

Purchaser: .....\$.....

## LOT 55 BALD BLAIR NIKOLAI N120<sup>PV</sup> APR

**BORN:** 21/07/2017      **GENETIC STATUS:** AMFU,CAFU,DDFU,NHFU      **SOCIETY ID:** NBBN120  
 S: BALD BLAIR DAVID G105      S: B/R 65R GENESIS  
**SIRE:** BALD BLAIR KEEGAN K279<sup>PV</sup>      **DAM:** BALD BLAIR D36<sup>PV</sup>  
 D: BALD BLAIR G7      D: BALD BLAIR Y99

JULY 2019 ANGUS AUSTRALIA BREEDPLAN																
CED	CEM	GL	BW	200 D	400 D	600 D	MCW	MILK	DC	SS	CWT	EMA	RIB	RUMP	RBV%	IMF%
+0.3	+0.0	-4.4	+5.3	+45	+77	+106	+104	+12	-4.6	+1.6	+50	+5.4	+0.2	+0.8	-0.1	+2.2
55%	37%	85%	74%	69%	69%	73%	66%	58%	38%	71%	61%	59%	63%	60%	55%	58%

\$ INDEX VALUES				BREEDING TYPE AND STRUCTURAL ASSESSMENT									
Angus Breeding	Domestic Index	Heavy Grain Index	Heavy Grass Index	Stat	Cap	BL	Ft Ft	Bk Ft	Leg Ang	P. Ang	Muscle	Doability	Sheath
+\$111	+\$101	+\$118	+\$108	24	36	27	22	22	26	23	36	33	5

Traits observed: GL,CE,BWT,200WT,400WT,600WT,SC,Scan(EMA,Rib,Rump,IMF),DOC,Genomics(CE,S-Step)



**Semen Motility**      **Scrotal Circumference**      **Semen Morphology**  
 ✓      40cm      92%  
**Vaccinated:** Pestigard, Vibrio, Lepto.

Purchaser: .....\$.....

## LOT 56 BALD BLAIR NORRIS N1<sup>PV</sup> HBR

**BORN:** 3/07/2017      **GENETIC STATUS:** AMFU,CAFU,DDFU,NHFU      **SOCIETY ID:** NBBN1

S: AYRVALE BARTEL E7  
**SIRE:** BOOROOMOOKA BARTEL K274<sup>SV</sup>  
 D: BOOROOMOOKA VORACIOUS H465  
  
 S: SYDGEN BLACK PEARL 2006  
**DAM:** BALD BLAIR PEARL L79<sup>PV</sup>  
 D: BALD BLAIR A73



JULY 2019 ANGUS AUSTRALIA BREEDPLAN																
CED	CEM	GL	BW	200 D	400 D	600 D	MCW	MILK	DC	SS	CWT	EMA	RIB	RUMP	RBV%	IMF%
+3.3	+4.2	-12.2	+4.6	+62	+105	+153	+148	+18	-4.4	+3.5	+89	+8.1	-1.5	-1.9	+1.6	+2.5
58%	43%	85%	75%	71%	71%	74%	67%	57%	41%	73%	62%	62%	64%	62%	58%	60%

\$ INDEX VALUES				BREEDING TYPE AND STRUCTURAL ASSESSMENT									
Angus Breeding	Domestic Index	Heavy Grain Index	Heavy Grass Index	Stat	Cap	BL	Ft Ft	Bk Ft	Leg Ang	P. Ang	Muscle	Doability	Sheath
+\$163	+\$134	+\$187	+\$153	26	42	30	22	22	26	23	40	31	5

Traits observed: GL,CE,BWT,200WT,400WT,600WT,SC,Scan(EMA,Rib,Rump,IMF),DOC,Genomics(CE,S-Step)



**Semen Motility**      **Scrotal Circumference**      **Semen Morphology**  
 ✓      42cm      69%  
**Vaccinated:** Pestigard, Vibrio, Lepto.

Purchaser: .....\$.....

# Bald Blair Bulls Rising 2 Years

Denotes EBVs in Top 10% of Angus Breed



## LOT 57 BALD BLAIR NORRIS N31<sup>PV</sup> HBR

**BORN:** 11/07/2017      **GENETIC STATUS:** AMFU,CAFU,DDFU,NHFU      **SOCIETY ID:** NBBN31  
 S: AYRVALE BARTEL E7      S: S A V THUNDERBIRD 9061  
**SIRE:** BOOROOMOOKA BARTEL K274<sup>SV</sup>      **DAM:** BALD BLAIR L7<sup>PV</sup>  
 D: BOOROOMOOKA VORACIOUS H465      D: BALD BLAIR J203

JULY 2019 ANGUS AUSTRALIA BREEDPLAN																
CED	CEM	GL	BW	200 D	400 D	600 D	MCW	MILK	DC	SS	CWT	EMA	RIB	RUMP	RBV%	IMF%
+3.4	+2.9	-7.4	+4.0	+63	+107	+151	+129	+18	-4.9	+2.7	+84	+8.9	-2.4	-3.0	+3.0	+0.8
57%	42%	85%	74%	71%	70%	73%	66%	57%	41%	73%	62%	62%	65%	62%	58%	61%

\$ INDEX VALUES				BREEDING TYPE AND STRUCTURAL ASSESSMENT									
Angus Breeding	Domestic Index	Heavy Grain Index	Heavy Grass Index	Stat	Cap	BL	Ft Ft	Bk Ft	Leg Ang	P. Ang	Muscle	Doability	Sheath
<b>+\$157</b>	<b>+\$137</b>	<b>+\$166</b>	<b>+\$153</b>	25	39	28	21	22	26	24	40	32	5

Traits observed: GL,CE,BWT,200WT,400WT,600WT,SC,Scan(EMA,Rib,Rump,IMF),DOC,Genomics(CE,S-Step)



Semen Motility  Scrotal Circumference **39.5cm** Semen Morphology **Retest**  
**Vaccinated:** Pestigard, Vibrio, Lepto.

Purchaser: .....\$.....

## LOT 58 BALD BLAIR BLACK PEARL N28<sup>PV</sup> APR

**BORN:** 11/07/2017      **GENETIC STATUS:** AMFU,CAFU,DDFU,NHFU      **SOCIETY ID:** NBBN28  
 S: SYDGEN TRUST 6228      S: AYRVALE GENERAL G18  
**SIRE:** SYDGEN BLACK PEARL 2006<sup>PV</sup>      **DAM:** BALD BLAIR L115<sup>PV</sup>  
 D: SYDGEN ANITA 8611      D: BALD BLAIR G174

JULY 2019 ANGUS AUSTRALIA BREEDPLAN																
CED	CEM	GL	BW	200 D	400 D	600 D	MCW	MILK	DC	SS	CWT	EMA	RIB	RUMP	RBV%	IMF%
+4.7	+4.6	-7.2	+0.1	+40	+74	+99	+59	+20	-4.7	+0.6	+64	+6.3	+1.8	+0.4	-0.6	+2.0
63%	52%	85%	74%	72%	70%	71%	70%	64%	44%	69%	65%	64%	66%	64%	60%	63%

\$ INDEX VALUES				BREEDING TYPE AND STRUCTURAL ASSESSMENT									
Angus Breeding	Domestic Index	Heavy Grain Index	Heavy Grass Index	Stat	Cap	BL	Ft Ft	Bk Ft	Leg Ang	P. Ang	Muscle	Doability	Sheath
<b>+\$114</b>	<b>+\$107</b>	<b>+\$112</b>	<b>+\$115</b>	22	40	25	26	22	25	23	39	30	5

Traits observed: GL,CE,BWT,400WT,600WT,SC,Scan(EMA,Rib,Rump,IMF),Genomics(CE,S-Step)



Semen Motility  Scrotal Circumference **38.5cm** Semen Morphology **79%**  
**Vaccinated:** Pestigard, Vibrio, Lepto.

Purchaser: .....\$.....

## LOT 59 BALD BLAIR NORRIS N89<sup>SV</sup> APR

**BORN:** 17/07/2017      **GENETIC STATUS:** AMFU,CAFU,DDFU,NHFU      **SOCIETY ID:** NBBN89  
 S: AYRVALE BARTEL E7      S: RENNYLEA F65  
**SIRE:** BOOROOMOOKA BARTEL K274<sup>SV</sup>      **DAM:** BALD BLAIR K208<sup>#</sup>  
 D: BOOROOMOOKA VORACIOUS H465      D: BALD BLAIR E21

JULY 2019 ANGUS AUSTRALIA BREEDPLAN																
CED	CEM	GL	BW	200 D	400 D	600 D	MCW	MILK	DC	SS	CWT	EMA	RIB	RUMP	RBV%	IMF%
+2.5	+1.7	-9.9	+2.4	+51	+87	+117	+81	+16	-4.4	+0.3	+67	+7.9	-0.8	-2.0	+1.6	+2.2
56%	40%	84%	75%	71%	70%	74%	67%	57%	40%	73%	62%	61%	64%	62%	57%	60%

\$ INDEX VALUES				BREEDING TYPE AND STRUCTURAL ASSESSMENT									
Angus Breeding	Domestic Index	Heavy Grain Index	Heavy Grass Index	Stat	Cap	BL	Ft Ft	Bk Ft	Leg Ang	P. Ang	Muscle	Doability	Sheath
<b>+\$137</b>	<b>+\$125</b>	<b>+\$148</b>	<b>+\$132</b>	22	42	26	21	23	27	23	42	32	5

Traits observed: GL,CE,BWT,200WT,400WT,600WT,SC,Scan(EMA,Rib,Rump,IMF),DOC,Genomics(CE,S-Step)



Semen Motility  Scrotal Circumference **37cm** Semen Morphology **71%**  
**Vaccinated:** Pestigard, Vibrio, Lepto.

Purchaser: .....\$.....

## LOT 60 BALD BLAIR BARTELL N219<sup>PV</sup> HBR

**BORN:** 10/08/2017      **GENETIC STATUS:** AMFU,CAFU,DDFU,NHFU      **SOCIETY ID:** NBBN219  
 S: TE MANIA BARTEL B219      S: SYDGEN BLACK PEARL 2006  
**SIRE:** AYRVALE BARTEL E7<sup>PV</sup>      **DAM:** BALD BLAIR PEARL L130<sup>PV</sup>  
 D: EAGLEHAWK JEDDA B32      D: BALD BLAIR F19

JULY 2019 ANGUS AUSTRALIA BREEDPLAN																
CED	CEM	GL	BW	200 D	400 D	600 D	MCW	MILK	DC	SS	CWT	EMA	RIB	RUMP	RBV%	IMF%
+2.3	+4.1	-5.3	+2.6	+46	+87	+112	+91	+15	-7.9	+2.4	+74	+4.3	+1.6	+1.5	-1.1	+2.8
64%	56%	85%	75%	72%	71%	74%	70%	65%	52%	74%	67%	66%	68%	66%	64%	65%

\$ INDEX VALUES				BREEDING TYPE AND STRUCTURAL ASSESSMENT									
Angus Breeding	Domestic Index	Heavy Grain Index	Heavy Grass Index	Stat	Cap	BL	Ft Ft	Bk Ft	Leg Ang	P. Ang	Muscle	Doability	Sheath
<b>+\$137</b>	<b>+\$120</b>	<b>+\$151</b>	<b>+\$128</b>	24	38	28	22	23	28	23	38	31	5

Traits observed: GL,CE,BWT,200WT,400WT,600WT,SC,Scan(EMA,Rib,Rump,IMF),DOC,Genomics(CE,S-Step)



Semen Motility  Scrotal Circumference **39cm** Semen Morphology **91%**  
**Vaccinated:** Pestigard, Vibrio, Lepto.

Purchaser: .....\$.....

# Bald Blair Bulls Rising 2 Years

Denotes EBVs in Top 10% of Angus Breed



## LOT 61 BALD BLAIR NORRIS N37<sup>PV</sup> APR

**BORN:** 11/07/2017      **GENETIC STATUS:** AMFU,CAFU,DDFU,NHFU      **SOCIETY ID:** NBBN37  
 S: AYRVALE BARTEL E7      S: SYDGEN BLACK PEARL 2006  
**SIRE:** BOOROOMOOKA BARTEL K274<sup>SV</sup>      **DAM:** BALD BLAIR PEARL L159<sup>PV</sup>  
 D: BOOROOMOOKA VORACIOUS H465      D: BALD BLAIR G34

JULY 2019 ANGUS AUSTRALIA BREEDPLAN																
CED	CEM	GL	BW	200 D	400 D	600 D	MCW	MILK	DC	SS	CWT	EMA	RIB	RUMP	RBV%	IMF%
+1.9	+3.7	-5.7	+2.7	+47	+78	+108	+77	+15	-3.2	+1.2	+69	+7.6	-2.7	-3.2	+2.1	+1.9
57%	42%	85%	75%	71%	71%	74%	67%	57%	40%	73%	62%	62%	65%	62%	58%	61%

\$ INDEX VALUES				BREEDING TYPE AND STRUCTURAL ASSESSMENT									
Angus Breeding	Domestic Index	Heavy Grain Index	Heavy Grass Index	Stat	Cap	BL	Ft Ft	Bk Ft	Leg Ang	P. Ang	Muscle	Doability	Sheath
+\$124	+\$118	+\$132	+\$121	24	39	27	22	23	25	25	39	32	5

Traits observed: GL,CE,BWT,200WT,400WT,600WT,SC,Scan(EMA,Rib,Rump,IMF),DOC,Genomics(CE,S-Step)



Semen Motility      Scrotal Circumference      Semen Morphology  
 ✓      35.5cm      70.5%  
**Vaccinated:** Pestigard, Vibrio, Lepto.

Purchaser: .....\$.....

## LOT 62 BALD BLAIR BLACK PEARL N203<sup>PV</sup> APR

**BORN:** 5/08/2017      **GENETIC STATUS:** AMFU,CAFU,DDFU,NHFU      **SOCIETY ID:** NBBN203  
 S: SYDGEN TRUST 6228      S: BALD BLAIR DAVID G105  
**SIRE:** SYDGEN BLACK PEARL 2006<sup>PV</sup>      **DAM:** BALD BLAIR L248<sup>PV</sup>  
 D: SYDGEN ANITA 8611      D: BALD BLAIR H165

JULY 2019 ANGUS AUSTRALIA BREEDPLAN																
CED	CEM	GL	BW	200 D	400 D	600 D	MCW	MILK	DC	SS	CWT	EMA	RIB	RUMP	RBV%	IMF%
+3.9	+4.9	-7.6	+2.2	+44	+74	+101	+77	+15	-3.9	+1.5	+48	+10.0	+0.9	+0.2	+1.1	+1.9
61%	50%	84%	74%	72%	71%	74%	70%	64%	44%	73%	65%	64%	67%	64%	61%	63%

\$ INDEX VALUES				BREEDING TYPE AND STRUCTURAL ASSESSMENT									
Angus Breeding	Domestic Index	Heavy Grain Index	Heavy Grass Index	Stat	Cap	BL	Ft Ft	Bk Ft	Leg Ang	P. Ang	Muscle	Doability	Sheath
+\$125	+\$116	+\$127	+\$123	27	37	30	22	23	26	23	36	32	4

Traits observed: GL,CE,BWT,200WT,400WT,600WT,SC,Scan(EMA,Rib,Rump,IMF),DOC,Genomics(CE,S-Step)



Semen Motility      Scrotal Circumference      Semen Morphology  
 ✓      38cm      70%  
**Vaccinated:** Pestigard, Vibrio, Lepto.

Purchaser: .....\$.....

## LOT 63 BALD BLAIR N51<sup>PV</sup> HBR

**BORN:** 13/07/2017      **GENETIC STATUS:** AMFU,CAFU,DDFU,NHFU      **SOCIETY ID:** NBBN51  
 S: AYRVALE BARTEL E7      S: S A V THUNDERBIRD 9061  
**SIRE:** BOOROOMOOKA BARTEL K274<sup>SV</sup>      **DAM:** BALD BLAIR THUNDERBIRD L287<sup>PV</sup>  
 D: BOOROOMOOKA VORACIOUS H465      D: BALD BLAIR G123

JULY 2019 ANGUS AUSTRALIA BREEDPLAN																
CED	CEM	GL	BW	200 D	400 D	600 D	MCW	MILK	DC	SS	CWT	EMA	RIB	RUMP	RBV%	IMF%
+1.7	+1.5	-6.2	+3.6	+58	+97	+126	+108	+19	-4.1	+2.3	+75	+5.1	-1.0	-2.1	+1.6	+1.3
57%	43%	72%	73%	71%	69%	70%	66%	57%	41%	73%	62%	62%	64%	62%	58%	61%

\$ INDEX VALUES				BREEDING TYPE AND STRUCTURAL ASSESSMENT									
Angus Breeding	Domestic Index	Heavy Grain Index	Heavy Grass Index	Stat	Cap	BL	Ft Ft	Bk Ft	Leg Ang	P. Ang	Muscle	Doability	Sheath
+\$125	+\$121	+\$127	+\$124	22	40	26	21	23	26	24	42	29	5

Traits observed: BWT,200WT,400WT(x2),600WT,SC,Scan(EMA,Rib,Rump,IMF),DOC,Genomics(CE,S-Step)



Semen Motility      Scrotal Circumference      Semen Morphology  
 ✓      40cm      90%  
**Vaccinated:** Pestigard, Vibrio, Lepto.

Purchaser: .....\$.....

## LOT 64 BALD BLAIR TRACTION N106<sup>PV</sup> HBR

**BORN:** 19/07/2017      **GENETIC STATUS:** AMFU,CAFU,DDFU,NHFU      **SOCIETY ID:** NBBN106  
 S: SITZ TOP GAME 561X      S: G A R ULTIMATE  
**SIRE:** JMB TRACTION 292<sup>PV</sup>      **DAM:** BALD BLAIR F73<sup>SV</sup>  
 D: JMB EMULOTA 013      D: BALD BLAIR B81

JULY 2019 ANGUS AUSTRALIA BREEDPLAN																
CED	CEM	GL	BW	200 D	400 D	600 D	MCW	MILK	DC	SS	CWT	EMA	RIB	RUMP	RBV%	IMF%
+2.2	-0.2	-3.1	+2.1	+45	+81	+95	+65	+16	-5.4	+2.0	+58	+8.6	+0.0	-1.2	+1.3	+1.3
60%	45%	85%	76%	73%	72%	74%	69%	63%	39%	74%	64%	63%	66%	63%	59%	62%

\$ INDEX VALUES				BREEDING TYPE AND STRUCTURAL ASSESSMENT									
Angus Breeding	Domestic Index	Heavy Grain Index	Heavy Grass Index	Stat	Cap	BL	Ft Ft	Bk Ft	Leg Ang	P. Ang	Muscle	Doability	Sheath
+\$112	+\$117	+\$108	+\$113	21	40	25	21	23	26	24	43	30	5

Traits observed: GL,CE,BWT,200WT,400WT,600WT,SC,Scan(EMA,Rib,Rump,IMF),DOC,Genomics(CE,S-Step)



Semen Motility      Scrotal Circumference      Semen Morphology  
 ✓      40.5cm      70%  
**Vaccinated:** Pestigard, Vibrio, Lepto.

Purchaser: .....\$.....

# Bald Blair Bulls Rising 2 Years

Denotes EBVs in Top 10% of Angus Breed



## LOT 65 BALD BLAIR TRACTION N150<sup>PV</sup> HBR

**BORN:** 25/07/2017      **GENETIC STATUS:** AMFU,CAFU,DDFU,NHFU      **SOCIETY ID:** NBBN150  
 S: SITZ TOP GAME 561X      S: BALD BLAIR DEBONAIR D34  
**SIRE:** JMB TRACTION 292<sup>PV</sup>      **DAM:** BALD BLAIR K126<sup>PV</sup>  
 D: JMB EMULOTA 013      D: BALD BLAIR F36

JULY 2019 ANGUS AUSTRALIA BREEDPLAN																
CED	CEM	GL	BW	200 D	400 D	600 D	MCW	MILK	DC	SS	CWT	EMA	RIB	RUMP	RBV%	IMF%
+2.1	+1.2	-4.6	+1.7	+47	+87	+107	+65	+26	-7.0	+2.4	+55	+5.8	+1.9	+2.5	-0.4	+1.9
59%	43%	85%	75%	71%	71%	74%	68%	61%	38%	73%	63%	63%	65%	62%	58%	62%

\$ INDEX VALUES				BREEDING TYPE AND STRUCTURAL ASSESSMENT									
Angus Breeding	Domestic Index	Heavy Grain Index	Heavy Grass Index	Stat	Cap	BL	Ft Ft	Bk Ft	Leg Ang	P. Ang	Muscle	Doability	Sheath
+\$126	+\$119	+\$124	+\$125	22	37	25	21	22	26	24	38	32	5

Traits observed: GL,CE,BWT,200WT,400WT,600WT,SC,Scan(EMA,Rib,IMF),DOC,Genomics(CE,S-Step)

**Cattle Vets** Semen Motility  Scrotal Circumference 38.5cm Semen Morphology 85%  
**Vaccinated:** Pestigard, Vibrio, Lepto.

Purchaser: .....\$.....

## LOT 66 BALD BLAIR NEPTUNE N195<sup>PV</sup> APR

**BORN:** 3/08/2017      **GENETIC STATUS:** AMFU,CAFU,DDFU,NHFU      **SOCIETY ID:** NBBN195  
 S: CONNEALY EARNAN 076E      S: BALD BLAIR RIGHT ANSWER J9  
**SIRE:** MUSGRAVE BIG SKY#      **DAM:** BALD BLAIR L233<sup>PV</sup>  
 D: SAV PRIMROSE 7861      D: BALD BLAIR J273

JULY 2019 ANGUS AUSTRALIA BREEDPLAN																
CED	CEM	GL	BW	200 D	400 D	600 D	MCW	MILK	DC	SS	CWT	EMA	RIB	RUMP	RBV%	IMF%
-0.1	+2.8	-4.0	+3.9	+50	+89	+111	+85	+15	-4.8	+1.9	+59	+3.9	+0.0	+0.6	+0.3	+0.8
59%	46%	72%	74%	71%	71%	74%	69%	61%	37%	73%	63%	62%	65%	61%	57%	61%

\$ INDEX VALUES				BREEDING TYPE AND STRUCTURAL ASSESSMENT									
Angus Breeding	Domestic Index	Heavy Grain Index	Heavy Grass Index	Stat	Cap	BL	Ft Ft	Bk Ft	Leg Ang	P. Ang	Muscle	Doability	Sheath
+\$108	+\$110	+\$100	+\$112	26	38	30	23	22	26	23	38	32	4

Traits observed: CE,BWT,200WT,400WT,600WT,SC,Scan(EMA,Rib,Rump,IMF),DOC,Genomics(CE,S-Step)

**Cattle Vets** Semen Motility  Scrotal Circumference 38.5cm Semen Morphology 89%  
**Vaccinated:** Pestigard, Vibrio, Lepto.

Purchaser: .....\$.....

## LOT 67 BALD BLAIR NEPTUNE N218<sup>PV</sup> APR

**BORN:** 8/08/2017      **GENETIC STATUS:** AMFU,CAFU,DDFU,NHFU      **SOCIETY ID:** NBBN218  
 S: CONNEALY RIGHT ANSWER 746      S: CONNEALY COMRADE 1385  
**SIRE:** BALD BLAIR RIGHT ANSWER J9<sup>PV</sup>      **DAM:** BALD BLAIR L149<sup>PV</sup>  
 D: BALD BLAIR G123      D: BALD BLAIR G211

JULY 2019 ANGUS AUSTRALIA BREEDPLAN																
CED	CEM	GL	BW	200 D	400 D	600 D	MCW	MILK	DC	SS	CWT	EMA	RIB	RUMP	RBV%	IMF%
+2.7	+1.1	-3.5	+4.5	+53	+94	+118	+106	+19	-3.3	+1.5	+62	+6.9	-1.3	-2.3	+2.2	+1.0
55%	38%	73%	74%	70%	70%	73%	67%	57%	36%	72%	61%	60%	63%	60%	56%	59%

\$ INDEX VALUES				BREEDING TYPE AND STRUCTURAL ASSESSMENT									
Angus Breeding	Domestic Index	Heavy Grain Index	Heavy Grass Index	Stat	Cap	BL	Ft Ft	Bk Ft	Leg Ang	P. Ang	Muscle	Doability	Sheath
+\$119	+\$121	+\$120	+\$120	24	40	28	22	23	26	24	40	30	5

Traits observed: CE,BWT,200WT,400WT,600WT,SC,Scan(EMA,Rib,Rump,IMF),DOC,Genomics(CE,S-Step)

**Cattle Vets** Semen Motility  Scrotal Circumference 39.5cm Semen Morphology 75%  
**Vaccinated:** Pestigard, Vibrio, Lepto.

Purchaser: .....\$.....

## LOT 68 BALD BLAIR BLACK PEARL N234<sup>PV</sup> HBR

**BORN:** 14/08/2017      **GENETIC STATUS:** AMFU,CAFU,DDFU,NHFU      **SOCIETY ID:** NBBN234  
 S: SYDGEN TRUST 6228      S: G A R ULTIMATE  
**SIRE:** SYDGEN BLACK PEARL 2006<sup>PV</sup>      **DAM:** BALD BLAIR H75<sup>PV</sup>  
 D: SYDGEN ANITA 8611      D: BALD BLAIR Z28

JULY 2019 ANGUS AUSTRALIA BREEDPLAN																
CED	CEM	GL	BW	200 D	400 D	600 D	MCW	MILK	DC	SS	CWT	EMA	RIB	RUMP	RBV%	IMF%
+0.5	+1.6	-4.5	+5.6	+60	+100	+134	+121	+15	-4.0	+3.0	+78	+6.1	-1.5	-2.6	+2.1	+1.9
64%	54%	85%	75%	73%	71%	74%	70%	66%	46%	74%	66%	65%	67%	65%	62%	64%

\$ INDEX VALUES				BREEDING TYPE AND STRUCTURAL ASSESSMENT									
Angus Breeding	Domestic Index	Heavy Grain Index	Heavy Grass Index	Stat	Cap	BL	Ft Ft	Bk Ft	Leg Ang	P. Ang	Muscle	Doability	Sheath
+\$138	+\$127	+\$152	+\$132	23	38	27	21	22	27	22	39	28	4

Traits observed: GL,CE,BWT,200WT,400WT,600WT,SC,Scan(EMA,Rib,Rump,IMF),DOC,Genomics(CE,S-Step)

**Cattle Vets** Semen Motility  Scrotal Circumference 42cm Semen Morphology 83%  
**Vaccinated:** Pestigard, Vibrio, Lepto.

Purchaser: .....\$.....

# Bald Blair Bulls Rising 2 Years

Denotes EBVs in Top 10% of Angus Breed



## LOT 69 BALD BLAIR MEDIATOR N241<sup>PV</sup> HBR

**BORN:** 17/08/2017      **GENETIC STATUS:** AMFU,CAFU,DDFU,NHFU      **SOCIETY ID:** NBBN241  
 S: MUSGRAVE AVIATOR      S: AYRVALE BARTEL E7  
**SIRE:** MUSGRAVE MEDIATOR<sup>PV</sup>      **DAM:** BALD BLAIR K58<sup>PV</sup>  
 D: MUSGRAVE BARBARA LASS 273      D: BALD BLAIR H70

JULY 2019 ANGUS AUSTRALIA BREEDPLAN																
CED	CEM	GL	BW	200 D	400 D	600 D	MCW	MILK	DC	SS	CWT	EMA	RIB	RUMP	RBV%	IMF%
+3.1	+2.1	-5.0	+4.3	+57	+102	+123	+88	+22	-4.9	+4.1	+76	+4.7	-0.1	-0.6	+0.7	+2.7
55%	36%	73%	74%	70%	69%	71%	64%	57%	37%	70%	62%	61%	64%	60%	57%	60%

\$ INDEX VALUES				BREEDING TYPE AND STRUCTURAL ASSESSMENT									
Angus Breeding	Domestic Index	Heavy Grain Index	Heavy Grass Index	Stat	Cap	BL	Ft Ft	Bk Ft	Leg Ang	P. Ang	Muscle	Doability	Sheath
+\$139	+\$133	+\$153	+\$133	23	37	26	21	22	25	24	37	34	5

Traits observed: BWT,200WT,400WT,600WT,SC,Scan(EMA,Rib,Rump,IMF),DOC,Genomics(CE,S-Step)



Semen Motility  Scrotal Circumference 41cm Semen Morphology 82%  
**Vaccinated:** Pestigard, Vibrio, Lepto.

Purchaser: .....\$.....

## LOT 70 BALD BLAIR JOURNEY N211<sup>PV</sup> HBR

**BORN:** 6/08/2017      **GENETIC STATUS:** AMFU,CAFU,DDFU,NHFU      **SOCIETY ID:** NBBN211  
 S: B/R FUTURE DIRECTION 4268      S: SYDGEN BLACK PEARL 2006  
**SIRE:** WR JOURNEY-1X74<sup>PV</sup>      **DAM:** BALD BLAIR PEARL L122<sup>PV</sup>  
 D: 2 BAR 5050 NEW DESIGN 7831      D: BALD BLAIR D15

JULY 2019 ANGUS AUSTRALIA BREEDPLAN																
CED	CEM	GL	BW	200 D	400 D	600 D	MCW	MILK	DC	SS	CWT	EMA	RIB	RUMP	RBV%	IMF%
+3.2	+2.4	-9.0	+3.2	+50	+84	+106	+80	+18	-4.4	+0.2	+60	+8.1	+1.2	-0.6	+1.0	+1.1
57%	43%	85%	75%	72%	71%	74%	68%	61%	41%	73%	64%	63%	66%	62%	59%	62%

\$ INDEX VALUES				BREEDING TYPE AND STRUCTURAL ASSESSMENT									
Angus Breeding	Domestic Index	Heavy Grain Index	Heavy Grass Index	Stat	Cap	BL	Ft Ft	Bk Ft	Leg Ang	P. Ang	Muscle	Doability	Sheath
+\$114	+\$115	+\$108	+\$117	21	38	25	22	23	26	23	40	30	5

Traits observed: GL,BWT,200WT,400WT,600WT,SC,Scan(EMA,Rib,Rump,IMF),DOC,Genomics(CE,S-Step)



Semen Motility  Scrotal Circumference 37.5cm Semen Morphology Retest  
**Vaccinated:** Pestigard, Vibrio, Lepto.

Purchaser: .....\$.....

## LOT 71 BALD BLAIR NELSON N227<sup>PV</sup> APR

**BORN:** 12/08/2017      **GENETIC STATUS:** AMFU,CAFU,DDFU,NHFU      **SOCIETY ID:** NBBN227  
 S: BOOROOMOOKA FRANKEL F510      S: BOOROOMOOKA FRANKEL F510  
**SIRE:** BALD BLAIR JIM JIM J140<sup>PV</sup>      **DAM:** BALD BLAIR J126<sup>PV</sup>  
 D: BALD BLAIR F214      D: BALD BLAIR E143

JULY 2019 ANGUS AUSTRALIA BREEDPLAN																
CED	CEM	GL	BW	200 D	400 D	600 D	MCW	MILK	DC	SS	CWT	EMA	RIB	RUMP	RBV%	IMF%
+2.0	-2.1	-4.7	+2.6	+41	+75	+105	+83	+20	-5.4	+1.5	+54	+5.0	+2.9	+4.0	-0.9	+1.9
56%	40%	74%	75%	72%	71%	74%	68%	61%	42%	73%	64%	62%	66%	63%	58%	61%

\$ INDEX VALUES				BREEDING TYPE AND STRUCTURAL ASSESSMENT									
Angus Breeding	Domestic Index	Heavy Grain Index	Heavy Grass Index	Stat	Cap	BL	Ft Ft	Bk Ft	Leg Ang	P. Ang	Muscle	Doability	Sheath
+\$114	+\$101	+\$112	+\$114	23	39	26	21	22	26	24	38	31	4

Traits observed: CE,BWT,200WT,400WT,600WT,SC,Scan(EMA,Rib,Rump,IMF),DOC,Genomics(CE,S-Step)



Semen Motility  Scrotal Circumference 40.5cm Semen Morphology 81%  
**Vaccinated:** Pestigard, Vibrio, Lepto.

Purchaser: .....\$.....

## LOT 72 BALD BLAIR N344<sup>PV</sup> HBR

**BORN:** 22/09/2017      **GENETIC STATUS:** AMFU,CAFU,DDFU,NHFU      **SOCIETY ID:** NBBN344  
 S: BOOROOMOOKA FRANKEL F510      S: A A R TEN X 7008 S A  
**SIRE:** BALD BLAIR JIM JIM J140<sup>PV</sup>      **DAM:** BALD BLAIR J12<sup>PV</sup>  
 D: BALD BLAIR F214      D: BALD BLAIR G49

JULY 2019 ANGUS AUSTRALIA BREEDPLAN																
CED	CEM	GL	BW	200 D	400 D	600 D	MCW	MILK	DC	SS	CWT	EMA	RIB	RUMP	RBV%	IMF%
-1.0	-1.7	-4.9	+7.4	+61	+99	+139	+125	+16	-5.9	+2.9	+64	+6.4	-0.7	-0.1	+1.3	+1.9
54%	39%	71%	73%	69%	68%	72%	66%	56%	39%	68%	60%	59%	62%	59%	55%	58%

\$ INDEX VALUES				BREEDING TYPE AND STRUCTURAL ASSESSMENT									
Angus Breeding	Domestic Index	Heavy Grain Index	Heavy Grass Index	Stat	Cap	BL	Ft Ft	Bk Ft	Leg Ang	P. Ang	Muscle	Doability	Sheath
+\$142	+\$121	+\$155	+\$135	24	38	27	21	23	26	23	37	32	5

Traits observed: BWT,200WT,400WT,600WT,SC,Scan(EMA,Rib,Rump,IMF),DOC,Genomics(CE,S-Step)



Semen Motility  Scrotal Circumference 41cm Semen Morphology Retest  
**Vaccinated:** Pestigard, Vibrio, Lepto.

Purchaser: .....\$.....



# Bald Blair Bulls Rising 2 Years

Denotes EBVs in Top 10% of Angus Breed



## LOT 73 BALD BLAIR N347<sup>PV</sup> HBR

**BORN:** 9/10/2017 **GENETIC STATUS:** AMFU,CAFU,DDFU,NHFU **SOCIETY ID:** NBBN347  
 S: CONNEALY RIGHT ANSWER 746 S: RENNYLEA GALILEO G10  
**SIRE:** BALD BLAIR RIGHT ANSWER J9<sup>PV</sup> **DAM:** BALD BLAIR J184<sup>PV</sup>  
 D: BALD BLAIR G123 D: BALD BLAIR F96

JULY 2019 ANGUS AUSTRALIA BREEDPLAN																
CED	CEM	GL	BW	200 D	400 D	600 D	MCW	MILK	DC	SS	CWT	EMA	RIB	RUMP	RBV%	IMF%
+0.0	+0.2	-1.2	+3.3	+49	+87	+117	+92	+25	-2.3	+2.1	+55	+3.7	-0.5	-0.5	-0.2	+2.7
54%	37%	70%	71%	70%	69%	70%	65%	57%	37%	69%	61%	59%	62%	59%	55%	58%

\$ INDEX VALUES				BREEDING TYPE AND STRUCTURAL ASSESSMENT									
Angus Breeding	Domestic Index	Heavy Grain Index	Heavy Grass Index	Stat	Cap	BL	Ft Ft	Bk Ft	Leg Ang	P. Ang	Muscle	Doability	Sheath
+\$111	+\$105	+\$119	+\$109	25	39	28	22	23	25	24	38	32	4

Traits observed: BWT,200WT,400WT,600WT,SC,Scan(EMA,Rib,Rump,IMF),DOC,Genomics(CE,S-Step)



Semen Motility  Scrotal Circumference 40.5cm Semen Morphology 85%  
**Vaccinated:** Pestigard, Vibrio, Lepto.

Purchaser: .....\$.....

## LOT 74 BALD BLAIR TRACTION N262<sup>PV</sup> HBR

**BORN:** 23/08/2017 **GENETIC STATUS:** AMFU,CAFU,DDFU,NHFU **SOCIETY ID:** NBBN262  
 S: MUSGRAVE AVIATOR S: RITO 9M25 OF RITA 5F56 PRED  
**SIRE:** MUSGRAVE MEDIATOR<sup>PV</sup> **DAM:** BALD BLAIR J16<sup>PV</sup>  
 D: MUSGRAVE BARBARA LASS 273 D: BALD BLAIR G5

JULY 2019 ANGUS AUSTRALIA BREEDPLAN																
CED	CEM	GL	BW	200 D	400 D	600 D	MCW	MILK	DC	SS	CWT	EMA	RIB	RUMP	RBV%	IMF%
+3.5	+2.6	-2.9	+0.9	+43	+79	+87	+66	+18	-3.9	+0.7	+57	+2.9	-0.9	-0.2	-0.6	+2.2
54%	34%	72%	73%	70%	69%	71%	64%	57%	36%	70%	61%	60%	64%	60%	56%	59%

\$ INDEX VALUES				BREEDING TYPE AND STRUCTURAL ASSESSMENT									
Angus Breeding	Domestic Index	Heavy Grain Index	Heavy Grass Index	Stat	Cap	BL	Ft Ft	Bk Ft	Leg Ang	P. Ang	Muscle	Doability	Sheath
+\$95	+\$107	+\$92	+\$96	21	40	25	22	24	26	23	41	30	5

Traits observed: BWT,200WT,400WT,600WT,SC,Scan(EMA,Rib,Rump,IMF),DOC,Genomics(CE,S-Step)



Semen Motility  Scrotal Circumference 35cm Semen Morphology Retest  
**Vaccinated:** Pestigard, Vibrio, Lepto.

Purchaser: .....\$.....

## LOT 75 BALD BLAIR BLACK PEARL N222<sup>PV</sup> APR

**BORN:** 11/08/2017 **GENETIC STATUS:** AMFU,CAFU,DDFU,NHFU **SOCIETY ID:** NBBN222  
 S: SYDGEN TRUST 6228 S: BALD BLAIR HIGHLANDER F138  
**SIRE:** SYDGEN BLACK PEARL 2006<sup>PV</sup> **DAM:** BALD BLAIR H243<sup>PV</sup>  
 D: SYDGEN ANITA 8611 D: BALD BLAIR E5

JULY 2019 ANGUS AUSTRALIA BREEDPLAN																
CED	CEM	GL	BW	200 D	400 D	600 D	MCW	MILK	DC	SS	CWT	EMA	RIB	RUMP	RBV%	IMF%
+1.5	+3.2	-8.0	+4.1	+47	+82	+109	+97	+12	-4.8	+1.5	+70	+8.0	-0.3	-1.6	+1.1	+1.4
62%	50%	85%	75%	72%	71%	74%	70%	65%	43%	73%	65%	63%	66%	64%	60%	62%

\$ INDEX VALUES				BREEDING TYPE AND STRUCTURAL ASSESSMENT									
Angus Breeding	Domestic Index	Heavy Grain Index	Heavy Grass Index	Stat	Cap	BL	Ft Ft	Bk Ft	Leg Ang	P. Ang	Muscle	Doability	Sheath
+\$119	+\$113	+\$122	+\$117										

Traits observed: GL,BWT,200WT,400WT,600WT,SC,Scan(EMA,Rib,Rump,IMF),DOC,Genomics(CE,S-Step)



Semen Motility  Scrotal Circumference 40cm Semen Morphology 73%  
**Vaccinated:** Pestigard, Vibrio, Lepto.

Purchaser: .....\$.....

## LOT 76 BALD BLAIR NEPTUNE N284<sup>PV</sup> APR

**BORN:** 28/08/2017 **GENETIC STATUS:** AMFU,CAFU,DDFU,NHFU **SOCIETY ID:** NBBN284  
 S: CONNEALY RIGHT ANSWER 746 S: BALD BLAIR TEN X J71  
**SIRE:** BALD BLAIR RIGHT ANSWER J9<sup>PV</sup> **DAM:** BALD BLAIR L255<sup>PV</sup>  
 D: BALD BLAIR G123 D: BALD BLAIR D152

JULY 2019 ANGUS AUSTRALIA BREEDPLAN																
CED	CEM	GL	BW	200 D	400 D	600 D	MCW	MILK	DC	SS	CWT	EMA	RIB	RUMP	RBV%	IMF%
+0.4	+0.3	-5.0	+5.2	+54	+92	+119	+102	+18	-2.4	+1.8	+63	+7.7	-1.2	-1.5	+1.8	+1.2
54%	37%	66%	72%	66%	64%	66%	64%	54%	35%	61%	57%	56%	59%	56%	52%	55%

\$ INDEX VALUES				BREEDING TYPE AND STRUCTURAL ASSESSMENT									
Angus Breeding	Domestic Index	Heavy Grain Index	Heavy Grass Index	Stat	Cap	BL	Ft Ft	Bk Ft	Leg Ang	P. Ang	Muscle	Doability	Sheath
+\$115	+\$115	+\$114	+\$117	23	40	26	21	22	27	23	38	33	5

Traits observed: CE,BWT,200WT,400WT,DOC,Genomics(CE)



Semen Motility  Scrotal Circumference 43cm Semen Morphology 73%  
**Vaccinated:** Pestigard, Vibrio, Lepto.

Purchaser: .....\$.....

# Bald Blair Bulls Rising 2 Years

Denotes EBVs in Top 10% of Angus Breed



## LOT 77 BALD BLAIR N309<sup>PV</sup> HBR

**BORN:** 5/09/2017      **GENETIC STATUS:** AMFU,CAFU,DDFU,NHFU      **SOCIETY ID:** NBBN309  
 S: TE MANIA EMPEROR E343      S: SITZ NEW DESIGN 458N  
**SIRE:** ALPINE JUSTICE J108<sup>SV</sup>      **DAM:** BALD BLAIR E60<sup>SV</sup>  
 D: ALPINE ELANOUR E191      D: BALD BLAIR V65

JULY 2019 ANGUS AUSTRALIA BREEDPLAN																
CED	CEM	GL	BW	200 D	400 D	600 D	MCW	MILK	DC	SS	CWT	EMA	RIB	RUMP	RBV%	IMF%
-1.0	+0.2	-5.6	+4.3	+42	+72	+86	+73	+10	-5.6	+1.7	+47	+1.8	-1.0	-1.9	+0.7	+2.3
57%	44%	74%	74%	71%	70%	73%	67%	60%	44%	72%	62%	60%	64%	61%	57%	59%

\$ INDEX VALUES				BREEDING TYPE AND STRUCTURAL ASSESSMENT									
Angus Breeding	Domestic Index	Heavy Grain Index	Heavy Grass Index	Stat	Cap	BL	Ft Ft	Bk Ft	Leg Ang	P. Ang	Muscle	Doability	Sheath
<b>+\$98</b>	<b>+\$102</b>	<b>+\$105</b>	<b>+\$93</b>	26	37	30	22	23	26	23	36	28	4

Traits observed: BWT,200WT,400WT,600WT,SC,Scan(EMA,Rib,Rump,IMF),DOC,Genomics(CE,S-Step)

**Cattle Vets** Semen Motility  Scrotal Circumference **39cm** Semen Morphology **Retest**  
**Vaccinated:** Pestigard, Vibrio, Lepto.

Purchaser: .....\$.....

## LOT 78 BALD BLAIR JUSTICE N311<sup>PV</sup> HBR

**BORN:** 5/09/2017      **GENETIC STATUS:** AMFU,CAFU,DDFU,NHFU      **SOCIETY ID:** NBBN311  
 S: TE MANIA EMPEROR E343      S: G A R ULTIMATE  
**SIRE:** ALPINE JUSTICE J108<sup>SV</sup>      **DAM:** BALD BLAIR H90<sup>PV</sup>  
 D: ALPINE ELANOUR E191      D: BALD BLAIR B116

JULY 2019 ANGUS AUSTRALIA BREEDPLAN																
CED	CEM	GL	BW	200 D	400 D	600 D	MCW	MILK	DC	SS	CWT	EMA	RIB	RUMP	RBV%	IMF%
+0.3	-0.3	-2.8	+4.0	+49	+85	+102	+94	+11	-8.1	-0.9	+57	+0.7	+2.3	+1.3	-2.4	+3.3
57%	43%	74%	74%	71%	70%	73%	67%	59%	42%	72%	62%	60%	63%	60%	57%	59%

\$ INDEX VALUES				BREEDING TYPE AND STRUCTURAL ASSESSMENT									
Angus Breeding	Domestic Index	Heavy Grain Index	Heavy Grass Index	Stat	Cap	BL	Ft Ft	Bk Ft	Leg Ang	P. Ang	Muscle	Doability	Sheath
<b>+\$113</b>	<b>+\$105</b>	<b>+\$126</b>	<b>+\$105</b>	23	39	26	21	21	26	23	38	32	5

Traits observed: BWT,200WT,400WT,600WT,SC,Scan(EMA,Rib,Rump,IMF),DOC,Genomics(CE,S-Step)

**Cattle Vets** Semen Motility  Scrotal Circumference **35.5cm** Semen Morphology **71.5%**  
**Vaccinated:** Pestigard, Vibrio, Lepto.

Purchaser: .....\$.....

## LOT 79 BALD BLAIR N319<sup>PV</sup> APR

**BORN:** 8/09/2017      **GENETIC STATUS:** AMFU,CAFU,DDFU,NHFU      **SOCIETY ID:** NBBN319  
 S: CONNEALY RIGHT ANSWER 746      S: AYRVALE GENERAL G18  
**SIRE:** BALD BLAIR RIGHT ANSWER J9<sup>PV</sup>      **DAM:** BALD BLAIR L32<sup>PV</sup>  
 D: BALD BLAIR G123      D: BALD BLAIR J241

JULY 2019 ANGUS AUSTRALIA BREEDPLAN																
CED	CEM	GL	BW	200 D	400 D	600 D	MCW	MILK	DC	SS	CWT	EMA	RIB	RUMP	RBV%	IMF%
+2.8	+1.3	-7.4	+1.0	+45	+83	+113	+87	+23	-0.6	+3.0	+63	+6.4	-1.7	-3.0	+1.9	+1.5
55%	38%	73%	73%	70%	70%	73%	67%	58%	38%	72%	61%	60%	63%	60%	56%	59%

\$ INDEX VALUES				BREEDING TYPE AND STRUCTURAL ASSESSMENT									
Angus Breeding	Domestic Index	Heavy Grain Index	Heavy Grass Index	Stat	Cap	BL	Ft Ft	Bk Ft	Leg Ang	P. Ang	Muscle	Doability	Sheath
<b>+\$109</b>	<b>+\$110</b>	<b>+\$110</b>	<b>+\$112</b>	24	39	27	22	22	26	23	40	30	5

Traits observed: BWT,200WT,400WT,600WT,SC,Scan(EMA,Rib,Rump,IMF),DOC,Genomics(CE,S-Step)

**Cattle Vets** Semen Motility  Scrotal Circumference **40cm** Semen Morphology **83%**  
**Vaccinated:** Pestigard, Vibrio, Lepto.

Purchaser: .....\$.....

## LOT 80 BALD BLAIR N341<sup>PV</sup> APR

**BORN:** 22/09/2017      **GENETIC STATUS:** AMFU,CAFU,DDFU,NHFU      **SOCIETY ID:** NBBN341  
 S: CONNEALY RIGHT ANSWER 746      S: NARRANGULLEN 1407 Z567  
**SIRE:** BALD BLAIR RIGHT ANSWER J9<sup>PV</sup>      **DAM:** BALD BLAIR E148<sup>PV</sup>  
 D: BALD BLAIR G123      D: BALD BLAIR C8

JULY 2019 ANGUS AUSTRALIA BREEDPLAN																
CED	CEM	GL	BW	200 D	400 D	600 D	MCW	MILK	DC	SS	CWT	EMA	RIB	RUMP	RBV%	IMF%
+3.0	+3.0	-7.9	+1.8	+49	+86	+110	+78	+20	-1.9	+1.1	+58	+8.3	-0.2	+0.1	+0.9	+1.5
56%	40%	72%	72%	71%	70%	73%	67%	60%	38%	70%	62%	60%	64%	61%	56%	59%

\$ INDEX VALUES				BREEDING TYPE AND STRUCTURAL ASSESSMENT									
Angus Breeding	Domestic Index	Heavy Grain Index	Heavy Grass Index	Stat	Cap	BL	Ft Ft	Bk Ft	Leg Ang	P. Ang	Muscle	Doability	Sheath
<b>+\$116</b>	<b>+\$116</b>	<b>+\$110</b>	<b>+\$120</b>	23	38	26	21	22	26	24	38	32	5

Traits observed: 200WT,400WT,600WT,SC,Scan(EMA,Rib,Rump,IMF),DOC,Genomics(CE,S-Step)

**Cattle Vets** Semen Motility  Scrotal Circumference **39.5cm** Semen Morphology **79%**  
**Vaccinated:** Pestigard, Vibrio, Lepto.

Purchaser: .....\$.....

# Caring for your New Bull



## **Bringing your new bull home:**

All Bulls at Bald Blair have been run as part of large groups until 8 weeks prior to sale, then put into smaller groups and supplemented in the lead up to the sale. It is important to remember this when you get your bull or bulls home. All bulls have been worked by horses, 4WD bikes, tray back utility and dogs, and have had people walking amongst them. In spite of this they still need to be respected and treated appropriately.

We recommend Insuring your bull prior to delivery to your property.

Arrange appropriate transport for safe delivery of your bull to your property.

When your bull gets home, treat him quietly and have a companion animal for him, either steers or cows. Leave them in the yards for a few days with feed and water until they are settled. All Bald Blair bulls have had their annual boosters for Pestigard, 7n1 and Lepto and Vibrio. In 2019 all bulls have received a tick fever vacine and 3-day sickness vacine. Once settled then they can go out into a holding paddock; keep feeding them to help settle them in to your farm.

Newly purchased young bulls should not be placed with older bulls upon return, or during mating.

## **During Mating:**

Use them either in single sire mating groups or as multi-sire mating groups with bulls the same age. The mating ratio is usually 2% two year bulls (1:50) or 3% yearling bulls (1:30). Make sure you check out your young bulls, in fact all your bulls, during mating regularly. Spend time watching them, watch for lameness and injury around or near the sheath. If using them in single sire mating groups consider rotating them around groups to cover for bull infertility. Have a spare bull on hand to replace any bulls that may be injured during mating. Replace bulls immediately if you suspect anything.

For more information I recommend the Angus Society of Australia brochure *Bring your New Bull Home Article*, which has been the reference for this article.

Finally, keep in touch and let me know how your bull or bulls are performing.

Thankyou for your support.



## Bald Blair Angus Pocket Guide for Buying Bulls

Number of heifers to be joined: .....

Number of cows to be joined: .....

Using the rule of thumb of joining one yearling bull to 25 – 30 females and one two year old bull to 50 females, work out the number of bulls required to successfully join your herd. It is always a good idea to have a spare bull or 2 in case of unexpected bull breakdowns, such as injury or illness.

Will I consider yearlings, or two year old bulls? Yes or No .....

Number of heifer bulls ready to work already in our herd.....

(Have they been semen morphology tested, vaccinated and are ready to work?) Yes/No

Number of heifer bull`s required for joining 2019: .....

Number of heifer bulls we need to purchase 2019:.....

Number of older, mature bulls ready to work already in herd:.....

(Have they been semen morphology tested, vaccinated and ready to work?) Yes/No

Number of 2 years and older bulls required for joining 2019:.....

Number of 2 year old bulls we need to purchase in 2019: .....

### **What is your Breeding Objective?**

Commercial self replacing angus herd targeting **overall improvement in profitability**: Angus Breeding Index

Commercial self- replacing herd targeting **pasture grown steers for feedlot trade**: checkout Heavy Grain Index

Commercial self -replacing herd targeting **domestic supermarket trade**: Domestic Index.

Commercial self- replacing herd targeting **pasture finished heavy steers**: check out the Heavy Grass

EBVs to focus on: Bwt, CE, GL, 600D Growth, Cwt, EMA , IMF .....

Lots that meet our criteria for heifer bulls (either yearling or two year olds).....

Lots that meet our criteria for joining cows.....

Questions to ask Sam over the phone on **02 6779 2141** or **0438 792 140**, on the Open Day on Sunday, 4th August 2019 or make an appointment to inspect the bulls prior to the sale on Tuesday, 6th August 2019.



# NATIONAL CATTLE HEALTH DECLARATION

V: 02/05/18

Property Identification Code (PIC) of this property  
This MUST be the PIC of the property that  
the stock is being moved from

N D 0 2 0 1 1 3

Attached to accompanying NVD/Waybill No.

0 0 0 3 6 0 7 1 7

## Biosecurity and health information

- Has the owner stated above owned all the cattle in this consignment since birth? Y  N
- Does the property of origin have a completed on-farm biosecurity plan? Y  N
- Have these cattle been tested for the presence of pestivirus antigen? If tested, were any cattle found to be persistently infected? Y  N   
Y  N
- Have these cattle been tested for the presence of pestivirus antibody? If tested what percentage of the tested cattle were antibody positive? Y  N   
Y  N
- Has the property of origin had an occurrence of clinical Johne's disease (JD) in any species in the past five years? Y  N  Unsure   
J-BAS of 8 (Optional)

- On the property of origin, have cattle been co-grazed with dairy cattle? Y  N  Unsure   
*See explanatory note for advice on co-grazing with non-bovine species*

- Has the source herd had a JD test? Y  N  Pending   
If so, which test? Check Test  Sample Test  Date 1 8 18  
Was the result negative? Y  N

- If dairy cattle, the consignment has a Dairy Assurance Score of: Part A (herd base score) Part B (calf credits) Part C (total Dairy Score)

- Any other relevant health information

## Treatments

Treatment type	Product	Date of treatment within last 6 months
Drench or pour-on	BAYMEC IVERMECTIN	14/6/2019
Liver fluke		
Other treatments	TICK FEVER	16/5/2019

## Current vaccinations for the cattle being moved (see explanatory note)

- Clostridial (e.g. 5 in 1): Y  Botulism: Y
- Leptospira (e.g. 7 in 1): Y  Bovine ephemeral fever: Y
- Pestivirus: Y  Tick fever: Y
- JD (Silirum): Y  Vibrio: Y

Other vaccinations (specify):

## Declaration (see explanatory notes for further information)

I, SAM WHITE (Full name)

PAUL BLAIR (Address) GUYRA (Town/suburb) NSW 2305 (State) (Postcode)

I declare that I am the owner or the person responsible for the husbandry of the cattle and that all the information in this document is true and correct. I also declare that I have read and understood all the questions that I have answered, that I have read and understood the explanatory notes, and that I have inspected the animals and deem them to be healthy, free of signs of disease and fit to travel.

Signature: 

Date 6/5/2019

\*Only the person whose name appears above may sign this declaration, or make amendments which must be initialed.

Tel. No. (0433) 792140 Email samwhite@baldblair.com.au

**EUROPEAN UNION VENDOR DECLARATION (CATTLE) AND WAYBILL**

D00360717

E0413

Export Control Act 1982 (Cwth); ACT Stock Act 1994; NSW Rural Lands Protection Act 1998; Queensland Stock Act 1915; WA Stock (Identification and Movement) Act 1970.

This form must be used for all cattle consigned from one EU accredited facility to another EU accredited facility. When cattle are sent from an EU accredited facility to a destination that is not EU accredited the National Vendor Declaration (cattle) and waybill should be used.

Part A To be completed by the accredited manager responsible for the husbandry of the cattle.

Owner of cattle BALD BLAIR PASTORAL CO. (FULL TRADING NAME)

Property/place where the journey commenced BALD BLAIR (ADDRESS)  
6486 GUYRA RD, GUYRA 2365 NSW (TOWN/SUBURB) (STATE)

Property Identification Code (PIC) of this property ND020113

This MUST be the PIC of the property that the stock is being moved from

**Description of cattle**

Number	Description (BREED, SEX, E.G. HEREFORD CROSS STEERS)	Brands or Earmarks (IF PRESENT OR REQUIRED)
6B	ANGUS x ANGUS BULLS	RISING 2 TAGS "Y" VARIOUS
1A	ANGUS x ANGUS BULLS	RISING 2 TAGS "Y" VARIOUS
82	Total	VARIOUS

Use the Attachment Forms for consignments that require more lines to describe the stock. (See Explanatory Notes)

Consigned to VARIOUS (NAME OF PERSON OR BUSINESS)

(ADDRESS)

Destination (if different) of cattle (TOWN/SUBURB) (STATE)

NLIS devices used on these cattle Number of ear tags 82 Number of rumen devices

Details of other statutory documents relating to this movement e.g. health statement

NATIONAL CATTLE HEALTH DECLARATION (DOCUMENT TYPE) (NUMBER) (OFFICE OF ISSUE) (TOWN/SUBURB) (STATE) (EXPIRY DATE) / / 20

1 Have the cattle in this consignment ever in their lives been fed feed containing animal fats?

Yes  No  (See Explanatory Notes)

2 Were all of the cattle born and raised on the vendor's property?

Yes  No  If No, how long ago were the cattle obtained or purchased? (If purchased at different times, tick the box corresponding to the time of the most recent purchase.)

A. Less than 2 months  B. 2-6 months  C. 6-12 months  D. more than 12 months

3 In the past 60 days, have any of these cattle been fed by-product stockfeeds?

Yes  No  If Yes, attach a list of the by-product stockfeeds, date when last fed and a copy of an analyst's report if available.

4 In the past 6 months, have any of these cattle been on a property listed on the ERP database or placed under grazing restrictions because of chemical residue?

Yes  No  If Yes, give details:

5 Are any of the cattle in this consignment still within a Withholding Period (WHP) or Export Slaughter Interval (ESI) as set by APVMA or SAFE MEAT, following treatment with any veterinary drug or chemical?

Yes  No  If Yes, give details: (Record additional details in question 8)

CHEMICAL PRODUCT (TREATMENT DATE) / / 20 WHP (ESI) (IF SET)

6 In the past 60 days, have any of the cattle in this consignment consumed any material that was still within a withholding period when harvested, collected or first grazed?

Yes  No  If Yes, give details: CHEMICAL PRODUCT (DATE APPLIED) / / 20 GRAZING WHP (DATE FIRST FED/GRAZED) / / 20 DATE FEEDING/GRAZING CEASED

7 In the past 42 days, were any of these cattle:

a) grazed in a spray risk area; or b) fed fodder cut from a spray drift risk area? (See Explanatory Notes for definition of spray drift risk area.)

Yes  No  If Yes Date sprayed: DAY / MONTH / YEAR

8 Additional information: see requirements in Explanatory Notes for completing this document.

**Declaration**

I SAM WHITE, BALD BLAIR, FULL NAME (ADDRESS) (TOWN/SUBURB) (STATE) 6486 GUYRA RD, GUYRA 2365 NSW LPA

declare as the manager responsible for the husbandry of the animals in this consignment, that the information stated in this declaration is true and correct. I also declare that none of the animals have ever been treated with HGPS; I have records available to demonstrate that the animals were either a) born on the property the PIC of which is shown, or b) for purchased cattle, accompanied by an EU vendor declaration attesting to their HGP freedom. I also declare that all cattle in this consignment have been properly identified by the use of the approved NLIS device. This declaration is made under the Export Control Act 1982. I will retain a copy of this declaration for two (2) years, three (3) years in WA (Giving false or misleading information is a serious offence under the Criminal Code Act 1995, the punishment for which is a period of imprisonment not exceeding 12 months).

I also declare that I have read and understood all the questions that I have answered, that I have read and understood the explanatory notes and that, while under my control, the cattle were not fed restricted animal material (including meat and bone meal) in breach of State or Territory legislation.

Signature\* [Signature] Date\* 6 / 8 / 2019

\*Only the person whose name appears above may sign this declaration, or make amendments which must be initialled.

Tel no. 0438 792140 Fax no. (am/pm)

Part B To be completed by the person in charge of the cattle while they are being moved.

Completion of this part is optional in SA and VIC.

Movement commenced: DAY / MONTH / YEAR (am/pm)

Vehicle registration number(s)\*:

I am the person in charge of the cattle during the movement and declare all the information in Part B is true and correct.

Signature Date / / 20 Tel no.

\*When more than one truck is carrying the cattle, other vehicle registration numbers are to be recorded.

Part C Agents declaration for cattle sold at auction.

Agents completing Part C should retain the original or a scanned copy of the original declaration or a summary for a minimum of two (2) years, or three (3) years in WA and supply a copy or summary to any buyer on request.

Vendor code Agent's code

Stock agent company Destination PIC

Buyer's name Saleyard arrival time (am/pm) Date

No. of cattle purchased Agent's signature

DAY MONTH YEAR









# THE SCIENCE OF SELECTION

The advanced genomic selection tool for  
Australian Angus breeders



**The new HD 50K for Angus is the latest innovation in genomic technology**

**Get reliable solutions sooner:**

Increase the accuracy of EBVs and indexes for young Angus bulls and heifers

Select, mate and market Angus seedstock with greater confidence

Identify your best young sire/dam prospects

Obtain accurate parent verification

**ZOETIS IS THE LEADING INNOVATOR — BUILD A HISTORY WITH THE COMPANY CREATING THE FUTURE**

HD 50K is available to Angus Australia members who are enrolled in Angus BREEDPLAN

**To take your breeding decisions to the next level call: 1300 768 400**



## BUYERS INSTRUCTION SLIP

*No verbal instructions can be accepted.*

Surname ..... First Name .....

Address .....

.....

Phone ..... PIC.....

Email.....

**PLEASE ACCOUNT DIRECT**

or

**TO MY AGENT**, who is .....

.....

Please mail my Pedigree

or

I require registration of transfer

Lots Purchased: .....

.....

Transport Arrangements: .....

.....

.....

.....

Insurance:      12 months   

                         6 months       

                         3 months       

Signature of Purchaser or Agent .....

### SPECIAL NOTE TO BUYERS

In the interest of buyers, and to prevent the occurrence of mistakes, all instructions concerning the delivery and trucking of stock must be given in writing and signed by the buyer or his representative.

# Y BALD BLAIR ANGUS Y

*"Helping our clients breed more profitable cattle"*



## DIRECTIONS:

Bald Blair is located 10kms East of Guyra on the Guyra Ebor Road.

The closest airport is Armidale Regional Airport and there are daily flights from Sydney and Brisbane to Armidale.



# Thank you

for supporting the Bald Blair Angus Bull Sale.

We look forward to seeing you next year.





OPEN DAY  
**SUNDAY 4TH AUGUST**  
10AM UNTIL 2PM  
Call to inspect any other time

# ∪ BALD BLAIR ANGUS ∪

*Open Day*

*“Helping our clients breed more profitable cattle”*



Sam White 0438 792 140 | [samwhite@baldblair.com.au](mailto:samwhite@baldblair.com.au) | [www.baldblairangus.com.au](http://www.baldblairangus.com.au)

