



SPRYS

SHORTHORNS

&

ANGUS

55 Years of Breeding Bull & Genetics Sale

Wednesday 24th April, 2019
on property "Ardlui" Wagga Wagga
Commencing at 1pm



LOT 19

Gerald & Lynden Spry

Ph: **02 6928 5526**

Mobile: **0428 651 481**

glspry@spryshorthorns.com

www.spryshorthorns.com

www.sprysangus.com.au



Trading as GJ & LL Spry ABN 63 815 350 153

'Ardlui' RMB 5389
Holbrook Road
WAGGA WAGGA NSW 2650 AUSTRALIA
Tel. 02 6928 5526 Fax. 02 6928 5563
Email. glspry@spryshorthorns.com
www.spryshorthorns.com.au

Dear Beef Producers

This year we celebrate 55 years of breeding. The Spry Family has had a long term commitment to the improvement of the Shorthorn breed and in recent years including the Angus breed.

This year we are very impressed with our total group of Sale bulls, females & genetics we are offering. Most of all the genetic data, including calving ease, carcass growth and do-ability to work & survive the harsher environment we are experiencing.

The Sale bulls are ready to go out and make a profit for their new owners. Our sale preparation has in mind that all bulls are capable of a long working life. We are not trying to have the best fed, heaviest bulls which affects the life of bulls.

All bulls have had a full Veterinary examination including feet & structure by Dr Reon Holmes, Holbrook Veterinary Centre, Holbrook. Reon also palpates and measures the testicles. Sprys offer a breeding guarantee on all bulls & females offered.

The offering has many outstanding bulls by our Elite Sire Battery who have a balance of EBV's. We do not single trait select in Sprys breeding programme.

A number of the bulls are sired by Muridale Thermal Energy 15A, a complete outcross to Australia and we are delighted with his progeny. Other main sires represented are The Grove Gigabytes J837 purchased for \$57,500. His progeny excel in performance data including IMF. The first progeny of Royalla Rembrandt K413, purchased for \$42,000 also look very promising in terms of phenotype and data.

All sires used are commercially tested from conception to consumption. Any bull which does not cut it are culled from our programme regardless of purchase price or breeding.

Our Angus programme is progressing very well with excellent reports of progeny from our bulls. We have focused on doing quite a bit of Embryo work on our top elite donors like Wattletop Barunah E295, purchased for \$38,000 at Wattletop dispersal. (Dam of Lot 19) We welcome inspection of our Sale bulls on 5th April or prior by arrangement.

We are also offering two outstanding PTIC Heifers which would fit and add to any Shorthorn herd they may go to. Frozen Embryos from two of our Elite Donors are also being offered.

Most breeders are having a hard time with severe drought and high fodder costs. No doubt when our season improves and we get a break the price of cattle is likely to hit all time high prices, so plan and hang in to reap some reward of a very high cattle market. The genetics you purchase at our Sale are an investment in your breeding herd for many years to come. You are buying from a tried and tested programme at Sprys.

Gerald & Lynden Spry thank you for your interest in our breeding programme and look forward to working with you in the future.

Best wishes for a healthy, happy and safe 2019,

Gerald & Lynden Spry





BREEDING BETTER BEEF - SUPPLYING BETTER BULLS

- Lots 1-18 - Shorthorn Bulls**
- Lots 19-35B - Angus Bulls**
- Lots 36-57 - Shorthorn Bulls**
- Lots 58-59 - PTIC Shorthorn Heifers**
- Lots 60-61 - Shorthorn Frozen Embryo's**

**WEDNESDAY 24th April, 2019 on property, "Ardlui", Wagga Wagga
Commencing at 1pm**

Sale Opening - Troy Setter, CEO Consolidated Pastoral Co

* View the Video of Sale bulls prior to our sale on our website: www.spryshorthorns.com

* If you require advice or assistance with your bull or genetic requirements from a Beef Cattle Consultant contact Bob Gahan (02) 6766 9899 or Mobile 0428 668233.
Bob will be in attendance on Sale day.

Sale will be interfaced with AuctionsPlus
contact: Peter Rollason 0419 600 323.



Vendor Contacts:

Gerald & Lynden Spry
Ph: 02 6928 5526
Mobile: 0428 651 481
Email: glspry@spryshorthorns.com

Guest Auctioneer
Paul Dooley
0458 662 646

SELLING AGENTS



Michael Coggan: 0409 848411
Jenni O'Sullivan: 0428 222080
Ross Milne Vic: 0408 057558
Andy McGeoch NSW: 0418 737470
Paul Jameson NSW: 0428 667998
Brian Kennedy NSW: 0427 844047
Tom Penna SA: 0428 854708
Andrew Meara Qld: 0427 210634



Alex Croker: 0428 326810

SALE INFORMATION

"THE SELLING SYSTEM" The sale shed is located in close proximity to the bull pens. The auctioneer sells the bulls by auction with video of each lot projected into the screen, rather than running the sale bulls into the sale ring. This system is very well accepted and we believe it is buyer and animal friendly and concurs with modern occupational, health and safety requirements.

➤ INSPECTION

Bulls can be inspected prior to sale with arrangements with the vendor or selling agent. This gives us the opportunity to assist in selection of the best genetics for your requirements.

➤ GUARANTEE BULLS AND SOUNDNESS EVALUATION as per attachment.

➤ BREEDING GUARANTEE

BULLS:- All bulls soundness evaluated by an independent Veterinarian prior to sale.

In the unlikely event of a claim, the vendor guarantees that (without expenses, interest, costs and damages) if any bull proves to be totally infertile or totally incapable of natural service, provided it is not caused by an injury or disease contracted since leaving the sale to replace with an animal of comparable value. If a bull does not possess a reasonable fertility, although not totally infertile any claim shall be considered on its merits by the vendor and his Veterinarian. Any complaint must be lodged with a relevant Veterinary Certificate within 6 months of the date of the Sale direct to the vendor.

➤ HEALTH

TB and Brucellosis free herd. JD status is JBas 6.

All bulls have vaccinated twice with 7 in 1. Also vaccinated against Vibriosis once, make sure you give the 2nd vaccination.

Bulls have been tested negative for persistently infected Pestivirus (BVDV).

Please note: The bulls in this catalogue have never been handled with horses. We recommend that if you use horses that you move your new bull with non cycling cattle so they are not spooked by a new situation. We also recommend that the new bulls are moved on their own by motorbike as this is what they are used to. We also use dogs on bulls. Gradually introduce the movement of bulls with horses so they can adapt in their own time.

➤ DELIVERY

We take personal interest in efficient delivery of all lots after the sale – contact Gerald direct with a minimum of 24 hours notice.

➤ AUCTIONSPLUS

This sale is interfaced with Auctionsplus. This will enable remote bidders to operate in the sale from their location via computer. Bidding will only be available to registered Auctionsplus users. Prospective bidders must register at least 24 hours prior to sale with Auctionsplus. Contact Auctionsplus 02 92624222 www.auctionsplus.com.au.

➤ BUYERS ORDERS AND PHONE LINK UP

Mobile phones operate successfully at the Sale Shed (Venue). We encourage potential purchasers who are unable to attend the sale to make arrangements with the vendor or his Agent if you wish to be contacted during the sale to place bids. Please make arrangements at least 48 hours prior to sale.

➤ PERSONAL TRANSPORT TO AND FROM SALE VENUE

We can arrange transport to and from the sale venue, please contact the selling Agent or Sprys.

➤ TRANSPORT OF YOUR PURCHASED ANIMALS

Stud Stock transport representatives will be available on sale day. Please speak with Gerald regarding his recommendations. No delivery on sale day. Transport rebate to \$200 per bull given to purchasers in Sth Australia, Qld, Tasmania & Kl.

➤ INSURANCE

We encourage you to insure your purchased lot or lots. All care will be taken from the fall of the gavel but it is the purchaser's responsibility for any injury or death. An insurance agents will be in attendance Sale day.

➤ ACCOMMODATION

We can arrange accommodation or contact the Motels direct. We recommend:

Mantra
22 Kincaid Street
WAGGA WAGGA
Ph: (02) 6921 6411

➤ PLEASE NOTE

It is unethical for anyone to promote or advertise or arrange the sale of cattle, other than those Vendors in the sale, unless with permission by the vendors.

➤ AIR FACILITIES

Good airport facilities are at Wagga and Albury and private planes may also use Holbrook.

➤ CATERING

Complimentary morning tea and lunch will be available prior to the sale, catered for by Little Billabong CWA.

➤ OUTSIDE AGENT REBATE

1. The Vendors agree to allow a rebate to outside Agents introducing their client in writing within 24 hours prior to the sale and settling on their behalf within 7 days of the sale. (This clause will be strictly enforced). Introductions must be sent direct to the Vendors.

2. Any outside Agent travelling a distance to the sale with their client and settling on their behalf within 7 days should contact the Vendor prior for approval of a larger rebate.

Sale Catalogue Disclaimer: All reasonable care has been taken to ensure that the information provided in this catalogue is correct at the time of publication. However, neither the vendor or the selling agents make no other representations about the accuracy, reliability or completeness of any information provided in this catalogue and do not assume any responsibility for the use or interpretation of the information in this catalogue. You are encouraged to seek independent verification of any information contained in this catalogue before relying on such information.

IMPORTANT NOTICES

The Selling Agent, its members, subsidiary or related corporations, officers, agents, and employees for themselves and for those for whom they act while exercising due care provide all information without responsibility and give no guarantee whatsoever as to its accuracy.

All persons who attend the sale do so entirely at their risk and the Selling Agent, its members, subsidiary or related corporations, officers, agents, employees and its principals, for themselves and for those for whom they act, do not assume or accept any responsibility or liability of whatever nature for any injury or damage whatsoever which may occur.

EXPLANATORY NOTES FOR CATALOGUES

Only Shorthorn GROUP BREEDPLAN EBV's can be validly compared between herds.

ESTIMATED BREEDING VALUES (EBVs)

An animal's breeding value is its genetic merit, half of which will be passed on to its progeny. While we will never know the exact breeding value, for performance traits it is possible to make good estimates. These are called Estimated Breeding Values (EBVs). The EBV is therefore the best estimate of an animal's genetic merit for that trait. EBVs are expressed as the difference between an individual animal's genetics and the genetic base to which the animal is compared.

ACCURACY

An accuracy value is presented with every EBV and gives an indication of the amount of information that has been used in the calculation of that EBV. The higher the accuracy, the lower the likelihood of change in the animal's EBV as more information is analysed for that animal or its relatives. The following guide is given for interpreting accuracy:

Accuracy Range	Interpretation
Less than 50%	Low accuracy and should be considered a preliminary estimate. The EBV could change substantially as more performance information becomes available.
50 - 74%	Medium accuracy, usually based on the animal's own records and pedigree.
75 - 90%	Medium-high accuracy and usually includes some progeny information. Becoming a more reliable indicator of the animal's value as a parent.
90% and above	High accuracy. It is unlikely that the EBV will change much with the addition of more progeny data.

As a rule, animals should be compared on EBVs regardless of accuracy. However, where two animals have similar EBVs the one with higher accuracy could be the safer choice, assuming other factors are equal.

TRAITS

Calving Ease

EBVs are based on calving ease (CE) scores, birth weights and gestation length information. More positive EBVs are favourable and indicate easier calving.

Direct calving ease indicates how this animal influences the birth of its progeny.

Daughter's calving ease indicates how well the animal produces daughters that have easier calving.

BIRTH

Gestation Length EBV (days) is based on AI records. Lower (negative) GL EBVs indicate easier calving and increased growth after birth.

Birth Weight EBV (kg) is based on the measured birth weight of animals, adjusted for dam age. The lower the value the lighter the calf at birth and the lower the likelihood of a difficult birth. This is particularly important when selecting sires for use over heifers.

FERTILITY

Scrotal Size EBV (cm) is an indicator of male fertility in regards to semen quality and quantity. Higher (positive) EBVs indicate higher fertility. SS is also positively associated with female fertility.

Days to Calving EBV (days) is an indicator of female fertility based on the time between a cow's first exposure to a bull and when she subsequently calved. Cows that calve late in the season or fail to calve are penalised. Lower (negative) EBVs are preferred indicating shorter days to calving for the sire's daughters.

GROWTH

200-Day Milk EBV (kg) is an estimate of an animal's milking ability. For sires, this EBV is indicative of their daughter's milking ability as it affects the 200 and 400 day weight of their calves.

200-Day Growth EBV (kg) is calculated from the weight of animals taken between 80 and 300 days of age. Values are adjusted to 200

days and for age of dam. This EBV is the best single estimate of an animal's genetic merit for growth to early ages.

400-Day Weight EBV (kg) is calculated from the weight of progeny taken between 301 and 500 days of age, adjusted to 400 days and for age of dam. This EBV is the best single estimate of an animal's genetic merit for yearling weight.

600-Day Weight EBV (kg) is calculated from the weight of progeny taken between 501 and 900 days of age, adjusted to 600 days and for age of dam. This EBV is the best single estimate of an animal's genetic merit for growth beyond yearling age.

Mature Cow Weight EBV (kg) is an estimate of the genetic different in cow weight at 5 years of age.

CARCASE

Carcase Weight EBV (kg) estimates the genetic difference in carcass weight at a standard age of 650 days.

Eye Muscle Area EBV (cm²) estimates genetic differences in eye muscle area at the 12/13th rib site of a 300kg dressed carcass. More positive EBVs indicate better muscling on animals.

Rib Fat EBV (mm) estimates the genetic differences in fat depth at the 12/13th rib in a 300kg dressed carcass. More positive EBVs indicate more subcutaneous fat and earlier maturity.

Rump Fat EBV (mm) estimates the genetic differences in fat depth at the P8 site of a 300kg dressed carcass. More positive EBVs indicate more subcutaneous fat and earlier maturity.

Retail Beef Yield Percent EBV (%) represents total (boned out) meat yield as a percentage of a 300kg dressed carcass. A more positive EBV indicates higher percentage yield for the 300kg carcass size.

Intra-muscular Fat Percent EBV (%) is an estimate of the genetic difference in the percentage of intra-muscular fat at the 12/13th rib site in a 300kg carcass. Depending on market targets, larger more positive values are generally more favourable.

SELECTION INDICES

Domestic Maternal Index (DM) - Estimates the genetic differences between animals in net profitability per cow joined for an example commercial herd in a temperate environment (e.g. Shorthorn, Angus or Hereford cows) targeting pasture grown and finished steers for the domestic trade (eg. supermarket). Steers are marketed at 480 kg live weight (260 kg HSCW and 10 mm P8 fat depth) at 16 months of age. Daughters are retained for breeding.

Export Maternal Index (EM) - Estimates genetic differences between animals in net profitability per cow joined for an example commercial herd in a temperate environment (e.g. Shorthorn, Angus or Hereford cows) targeting steers for the Japanese B3 market. Steers are pasture grown to feedlot entry then feedlot finished for 150 days. Steers are marketed to the feedlot at 450 kg live weight, and then slaughtered after finishing at 675 kg live weight (370kg HSCW). Daughters are retained for breeding.

Northern Maternal Index (NM) - Estimates the genetic differences between animals in net profitability per cow joined for an example commercial herd in Northern Australia (e.g. Braham, Droughtmaster or Santa Gertrudis cows) targeting the export trade. Steers are finished on grass and marketed at 600 kg live weight (320 kg HSCW and 10 mm P8 fat depth) at 28 months of age. Daughters are retained for breeding.

The Trans-Tasman Shorthorn GROUP BREEDPLAN Estimated Breeding Values contained in this Sale Catalogue were compiled by the Agricultural Business Research Institute (ABRI) from data supplied by the breeders. Neither the Shorthorn Society of Australia, the Beef Shorthorn Society of Australia, the New Zealand Beef Shorthorn Association nor the ABRI oversee or audit the collection of this data.

Grass Fed Trial win for the Killalea Family

Marg and Tony Killalea at Holbrook have recently won the 2018 Lardner Park Grass Fed Trial.

The overall win combines Weight gain on grass plus Carcase which is the Ultimate, as we need cattle which perform at both ends of the spectrum so everyone is making a profit.

The Angus X Angus Shorthorn cross steers performed very well in the paddock and on the hook which was very pleasing for the Killalea family who were ecstatic with their win against many breeds and crosses.

Marg and Tony also won the 2017 Coles Beef Producer of the Year.



Details of the competition are listed below.

Introduction:

The Lardner Park Annual Steer Trial is the only grass-based steer trial in Australia, which provides producers with the opportunity to assess their cattle under independently controlled grazing conditions. The trial, now in its 44th year, aims to provide valuable information on the growth and carcase quality of steers entered. Cattle were processed on the 4th of December and graded at JBS Brooklyn, on behalf of Coles. The Meat Standards Australia (MSA) grading system was used to assess carcasses; MSA measurements were then converted to carcase points using an Australian Beef Carcase Appraisal System (ABCAS). Compliant with the Coles QA grass-fed program, cattle are required to meet standard domestic trade specifications.

Carcass feedback reports were compiled for each competitor. These reports aim to provide entrants with their competition and carcase results as well as an eating quality analysis of how their entries compare to cattle within the trial, as well as against MSA eligible graded cattle within Victoria and New South Wales, and nationally. This report uses figures relative to the 2018 calendar year.

The MSA Index, a standard national measure of the predicted eating quality potential of a carcase, has been used extensively in this report. The MSA Index, a number between 30 and 80, is a weighted average of the predicted eating quality scores of 39 cuts across the carcase. It is calculated using MSA grading attributes, which are influenced by the producer, and is a consistent benchmark that can be used across all processors, geographic regions, and over time.

Competition Statistics:

The 2018 trial commenced in June 2018 and concluded in December 2018 with 62 steer entries from 27 enterprises. As a group, the Lardner Park steers had a compliance rate of 88.7% to the carcase weight specifications; two carcasses falling below 210kg HSCW and five carcasses weighing above 285kg HSCW. Compliance to MSA minimum requirements was 95%, the three non-compliant carcasses due to high pH (1 carcase) or inadequate rib fat (2 carcasses). Carcasses that did not meet the MSA minimum requirements did not receive an MSA Index score.

REFERENCE SIRES

REFERENCE SIRE

MURIDALE THERMAL ENERGY 15A (P)

DOB: 27/03/2013

Colour: Red

Ident No.: MCAN477341

SASKVALLEY ULTRA 12J (P) Roan

SASKVALLEY ULTRA 12J (P) Roan

SASKVALLEY ROUGHNECK 154R (P) Red

SASKVALLEY BONANZA 219M (P) Roan

SASKVALLEY RAGGEDY ANN 57H (P) Red Little White

SASKVALLEY BRENDA 218K (P) Roan

Sire: SASKVALLEY TRADITION 106T (P) Red

Dam: MURIDALE GOOSE 32R (P) Roan

SASKVALLEY ULTRA 12J (P) Roan

MURIDALE BUSTER 14K (P) Roan

SASKVALLEY MYRTLE 83N (P) Roan

MURIDALE SWAN 54N (P) White

SASKVALLEY MYRTLE 174D (P) Red

MURIDALE DARLIN 64K (P) Roan

February 2019 Shorthorn GROUP BREEDPLAN

	Calving Ease DIR (%)	Calving Ease DTRS (%)	Gestation Length (days)	Birth Wt. (kg)	200 Day Wt. (kg)	400 Day Wt. (kg)	600 Day Wt. (kg)	Mat. Cow Wt. (kg)	Milk (kg)	Scrotal Size (cm)	Days to Calving (days)	Carcase Wt. (kg)	Eye Muscle Area (sq.cm)	Rib Fat (mm)	Rump Fat (mm)	Retail Beef Yield (%)	IMF (%)
EBV	+6.3	+3.0	-3.7	+1.5	+26	+33	+28	+25	-	+1.3	-2.0	+30	+4.7	+1.7	+3.0	-0.4	+0.8
ACC	52%	32%	85%	89%	82%	84%	77%	60%	-	80%	46%	58%	65%	68%	68%	60%	53%

NB: Shaded areas signify a trait leader for that trait.

Traits Observed:

Complete Outcross Genetics & tested Homozygous Polled. Trait leader for Gestation length also top 5% for IMF.

Thermal Energy 15A has bred just what we require in the Australian beef industry, calves come easy and have quick growth, heaps of carcass, fat cover with high IMF.

We think he will be a trait leader for IMF (only need his accuracy to get higher). When the US data gets combined with the Aussie data we think his numbers will go to another level upwards.

We are very confident Thermal Energy 15A progeny are ideal for the Thousand Guineas (Branded Shorthorn Product with JBS Australia). Progeny are medium framed, grow quickly and have the potential of good even fat cover with high IMF.



MURIDALE THERMAL ENERGY 15A

REFERENCE SIRE

THE GROVE GIGABYTES J0837 (P)

DOB: 24/09/2013

Colour: Red

Ident No.: PHABDBJ0837

MOOMBI STARLIGHT N77 (P) (AI) White

DEERHORN CRUICKSHANK 946 (IMP USA) (P) Red

THE GROVE INFORMANT U255 (P) Red

THE GROVE KOOKABURRA W735 (P) (ET) (AI) Red

THE GROVE LUCINDA 25TH (P) Red Little White

THE GROVE BLUE DALE 2ND (P) (ET) (AI) Roan

Sire: THE GROVE INFORMANT Y463 (P) Roan

Dam: THE GROVE KOOKAS DALE E1237 (P) (ET) (AI) Red

GUMBLE CAPRICORN 2ND (P) (AI) Roan

EDEN PARK RED EAGLE U002 (P) (ET) (AI) Red

THE GROVE 7664 (P) (SFA) Roan

THE GROVE R.E. DALE W744 (P) (ET) (AI) Red

THE GROVE MB109 (P) (SFA)

THE GROVE DALE 39TH (P) Red

February 2019 Shorthorn GROUP BREEDPLAN

	Calving Ease DIR (%)	Calving Ease DTRS (%)	Gestation Length (days)	Birth Wt. (kg)	200 Day Wt. (kg)	400 Day Wt. (kg)	600 Day Wt. (kg)	Mat. Cow Wt. (kg)	Milk (kg)	Scrotal Size (cm)	Days to Calving (days)	Carcase Wt. (kg)	Eye Muscle Area (sq.cm)	Rib Fat (mm)	Rump Fat (mm)	Retail Beef Yield (%)	IMF (%)
EBV	-2.3	+4.8	+0.5	+3.6	+33	+53	+68	+71	+6	+2.1	-2.1	+46	+8.2	+0.9	+2.0	+1.0	+1.2
ACC	63%	49%	89%	93%	89%	90%	85%	72%	51%	87%	59%	70%	74%	77%	76%	70%	65%

NB: Shaded areas signify a trait leader for that trait.

Traits Observed:

Trait leader for 400 & 600 day wt also EMA & IMF which is quite rate. He is tested Homozygous Polled.

Purchased for \$57,500 in partnership with Arubial Stud, Condamine. His progeny have certainly had an impact in the last 12 months. Most of his progeny are easy doing. We are most impressed with the bulls by him in the sale as I think you will be.

(Semen available for sale).



THE GROVE GIGABYTES J0837

REFERENCE SIRES

REFERENCE SIRE

SPRYS PRIMROSE'S BUDDY J17 (P) (ET) (AI)

DOB: 01/03/2013

Colour: Roan

Ident No.: GLSJ17

BYLAND GOLD DUST (P) Red and White

EDEN PARK RED EAGLE U002 (P) (ET) (AI) Red

BYLAND GOLD SPEAR (P) Red Little White

THE GROVE KASPROWICZ W791 (P) Red

BYLAND AUGUSTA ID40 (P) Red

THE GROVE DALE 39TH (P) Red

Sire: RED ROSE GOLD SPEAR RUFFIAN (IMP CAN) (P) Roan

Dam: THE GROVE PRIMROSE A742 (P) (ET) (AI) Red

EIONMOR MR GUS 80C (IMP CAN) (P) Roan

EVILO SUPER STAR L32 (P) (AI) Red

RED ROSE GUS ROAN LADY 6J (P) Roan

THE GROVE PRIMROSE R202 (P) Red

RAELYND ROAN LADY 15D (P) Roan

THE GROVE PRIMROSE 18TH (P) Red

February 2019 Shorthorn GROUP BREEDPLAN

	Calving Ease DIR (%)	Calving Ease DTRS (%)	Gestation Length (days)	Birth Wt. (kg)	200 Day Wt. (kg)	400 Day Wt. (kg)	600 Day Wt. (kg)	Mat. Cow Wt. (kg)	Milk (kg)	Scrotal Size (cm)	Days to Calving (days)	Carcase Wt. (kg)	Eye Muscle Area (sq.cm)	Rib Fat (mm)	Rump Fat (mm)	Retail Beef Yield (%)	IMF (%)
EBV	+15.4	+5.4	-3.2	-1.1	+20	+19	+31	+16	+9	+0.8	-1.5	+35	+4.2	+0.9	+1.5	+0.9	+0.8
ACC	74%	63%	89%	94%	90%	91%	88%	76%	57%	89%	62%	78%	80%	81%	83%	75%	68%

NB: Shaded areas signify a trait leader for that trait.

Traits Observed: BWT, 200WT, 400WT, 600WT, SS, FAT, EMA, IMF

Trait leader for Gestation length, BW & IMF.

Buddy has been a great calving ease Sire but still giving us enough growth, EMA, Positive fats and high IMF. Ideal to ease maturity and a great saleable product.

(Semen available for sale).



SPRYS PRIMROSE'S BUDDY J17

REFERENCE SIRE

SPRYS PATENT G60 (P) (AI)

DOB: 10/05/2011

Colour: Red

Ident No.: GLSG60

WAUKARU GOLDSHIP (IMP USA) (P) Red

HS ROLEX 772 (IMP USA) (P) (ET) Red

WAUKARU GOLD CARD 5042 (IMP USA) (P) Red

LONE PINE REGMONT S106 (P) Roan

WAUKARU COLONIAL NAN 233 (P) Red

LONE PINE ROANY H52 (P) Roan

Sire: WAUKARU PATENT 8161 (IMP USA) (P) (ET) Red

Dam: LONE PINE BALM C050 (P) Red Little White

C P BOSTON BODACIOUS 12H (IMP CAN) (P) Red

SPRYS GRANDSLAM Q23 (P) (ET) Red

WAUKARU 12H MELITA ROSE 5021 (H) Red

LONE PINE BALM U77 (P) Red

WAUKARU MELITA ROSE 0144 (P) Red

LONE PINE BALM S46 (P) Red

February 2019 Shorthorn GROUP BREEDPLAN

	Calving Ease DIR (%)	Calving Ease DTRS (%)	Gestation Length (days)	Birth Wt. (kg)	200 Day Wt. (kg)	400 Day Wt. (kg)	600 Day Wt. (kg)	Mat. Cow Wt. (kg)	Milk (kg)	Scrotal Size (cm)	Days to Calving (days)	Carcase Wt. (kg)	Eye Muscle Area (sq.cm)	Rib Fat (mm)	Rump Fat (mm)	Retail Beef Yield (%)	IMF (%)
EBV	+1.8	-3.6	-3.2	+2.1	+30	+54	+70	+39	+6	+1.6	-2.0	+41	+2.1	-0.6	-0.4	+1.0	+0.7
ACC	67%	57%	82%	88%	84%	85%	85%	79%	66%	80%	58%	72%	73%	77%	77%	71%	65%

NB: Shaded areas signify a trait leader for that trait.

Traits Observed: GL, BWT, 200WT, 400WT, SS, FAT, EMA, IMF

Patent G60 was sold in our 2013 Bull Sale to Adrian Goode, Wangolina, SA. We were very happy with this bulls' progeny and we decided to use semen. His progeny have performed very well for Adrian with both maternal performance and carcass data with his steers into the grass fed (Teys) market. We are very impressed with his bulls in this year's sale.



SPRYS PATENT G60

REFERENCE SIRES

REFERENCE SIRE **ROYALLA REMBRANDT K413 (P)**

DOB: 11/09/2014

Colour: Roan

Ident No.: JSNK413

WEEBOLLABOLLA THEODORE T85 (P) Roan

WEEBOLLABOLLA QUILPIE 18 (P) Roan

MARELLAN INDESTRUCTABLE (P) Roan

WEEBOLLABOLLA THEODORE T85 (P) Roan

MARELLAN AUGUSTA 2100 (P) Roan

WEEBOLLABOLLA NINDETHANA (P) (AI) Red

Sire: ROYALLA OSTENTATIOUS G404 (P) Roan

Dam: MARELLAN DORA 8074L (P) (ET) Red

MARELLAN FERRARI (P) Roan

MOOMBI WARLORD T56 (P) Red

MARELLAN REDWING J6065 (P) Roan

INVERARY DORA W184 (P) Red

STIRLING VIEW REDWING 65TH (P) (AI) RLW

REDMARLEY DORA P31 (P) RLW

February 2019 Shorthorn GROUP BREEDPLAN

	Calving Ease DIR (%)	Calving Ease DTRS (%)	Gestation Length (days)	Birth Wt. (kg)	200 Day Wt. (kg)	400 Day Wt. (kg)	600 Day Wt. (kg)	Mat. Cow Wt. (kg)	Milk (kg)	Scrotal Size (cm)	Days to Calving (days)	Carcass Wt. (kg)	Eye Muscle Area (sq.cm)	Rib Fat (mm)	Rump Fat (mm)	Retail Beef Yield (%)	IMF (%)
EBV	+10.0	+7.1	-3.9	+1.9	+38	+47	+60	+44	+6	+3.5	-8.4	+46	+7.4	-0.3	-1.8	+2.0	-0.1
ACC	62%	47%	77%	89%	84%	87%	80%	71%	45%	83%	57%	68%	74%	78%	78%	72%	64%

NB: Shaded areas signify a trait leader for that trait.

Traits Observed: BWT, 400WT(x2), SS, FAT, EMA, IMF

Top 1% for 2 of the 3 Indexes. Trait leader for Gestation length, 200 day wt, Scrotal, EMA & RBY. The first progeny to be offered at Auction by the \$42,000 sire, purchased by Spry's, Outback & the Morton family, NZ.

The Rembrandt progeny do look very promising with many outstanding females and bulls that come easy at birth and have plenty of performance with high EMA and large Scrotal size. His progeny certainly have extra eye appeal with their length & balance.

(Semen available for sale).

ROYALLA REMBRANDT K413



Congratulations

from
Dr Stuart Geard and the team
at Holbrook Breeders Australia

SHORTHORN TOP PRICE SALE BULL

This voucher entitles the purchaser to semen collection services
supplied by Holbrook Breeders Australia to
the value of \$500. Collection either at HBA or at Sprys.

SIGHT UNSEEN PURCHASING PROGRAM

100% satisfaction guarantee.
Available to buyers who cannot attend the Sale.

For those purchasers who have discussed their requirements with us prior to the Sale we offer a 100% money back guarantee if the purchaser is not completely satisfied with their purchase.

We must be notified within seven days of taking delivery.

However the purchaser will be responsible for return transport costs.

SPRYS NEW BULL GUARANTEE:

All bulls are backed by a 3 YEAR GUARANTEE. In the event of a bull proven to be incapable of natural service the vendor can either offer a suitable replacement if available or issue a credit for future sales. The credit is a pro-rata value of the bull minus the salvage value. The guarantee can only apply if the bulls' incapacity is not caused by injury or disease since taking delivery. Any claim must be accompanied by a relevant veterinary certificate. The vendor retains the right to obtain independent veterinary confirmation of any claim.

It is important to understand that normal care must be taken and good husbandry practices observed, as we cannot replace a bull that is injured or dies for any reason. As such, we recommend you insure animals against injury. A representative of an insurance service organisation will be available on sale day.

PURCHASER OF MOST LOTS AT AUCTION will receive:

Half tonne Fabstock Mineral
courtesy Doug Walker
(see adv. page).

PURCHASER OF THE SHORTHORN & ANGUS TOP PRICED BULL will receive:

Semen collection to the
value of \$500 by
Holbrook Breeders
Australia.

FOR THE TOP PRICED BULL OVER ENTIRE SALE

A voucher for the value of
\$300 worth of services from
North East Genetics.

Table 1. Average EBVs for the 2017 born animals analysed in the 2019 February Shorthorn GROUP BREEDPLAN.

CE Direct EBV	CE Dtrs EBV	Gest Length EBV	Birth Weight EBV	Scrotal Size EBV	200 Day Milk EBV	200-Day Growth EBV	400-Day Weight EBV	600-Day Weight EBV	Days to Calving EBV
+1.4	+1.5	-1.7	+2.9	+1.5	+6	+27	+38	+51	-1.7
Mature Weight EBV	Carcass Weight EBV	EMA EBV	Rib Fat EBV	Rump Fat EBV	RBV% EBV	IMF% EBV	Domestic Maternal Index (\$)	Export Maternal Index (\$)	Northern Maternal Index (\$)
+43	+34	+4.3	-0.3	-0.3	+1.0	+0.5	+34	+36	+42

VISUAL APPRAISAL

Although EBV's provide an estimate of an animal's genetic merit for a range of production traits, they do not provide information for all of the traits that must be considered during selection of **functional** animals. In all situations, EBV's should be used in conjunction with visual assessment for other traits of importance (structural soundness, temperament, fertility etc). A recommended practise is to firstly select replacement breeding stock based on EBV's and to then select from this group to ensure that the final selections are visually acceptable.

LOT 1

SPRYS GIGABYTES N104 (P) (AI)

DOB: 08/08/2017

Colour: Roan

Ident No.: GLSN104

Age in Months: 20.5

THE GROVE INFORMANT U255 (P) Red
THE GROVE INFORMANT Y463 (P) Roan
THE GROVE U664 (P) (SFA) Roan

ROCKDELL PRIDE 50K (IMP CAN) (P) RLW
SPRYS PRIDES STAR C034 (P) (AI) Red
SPRYS T12 LOVELY W204 (P) Red

Sire: THE GROVE GIGABYTES J0837 (P) Red

Dam: SPRYS C34 BERYL F89 (P) Red Little White

THE GROVE KOOKABURRA W735 (P) (ET) (AI) Red
THE GROVE KOOKAS DALE E1237 (P) (ET) (AI) Red
THE GROVE R.E. DALE W744 (P) (ET) (AI) Red

EUMEMERRING SUDDEN IMPACT (AI) (H) (AI) RLW
SPRYS IMPACTS BERYL (P) (AI) RLW
SPRYS LEGENDS BERYL W141 (P) (AI) RLW

MEASUREMENTS

Scrotal Size |

Weight |

February 2019 Shorthorn GROUP BREEDPLAN

	Calving Ease DIR (%)	Calving Ease DTRS (%)	Gestation Length (days)	Birth Wt. (kg)	200 Day Wt. (kg)	400 Day Wt. (kg)	600 Day Wt. (kg)	Mat. Cow Wt. (kg)	Milk (kg)	Scrotal Size (cm)	Days to Calving (days)	Carcass Wt. (kg)	Eye Muscle Area (sq.cm)	Rib Fat (mm)	Rump Fat (mm)	Retail Beef Yield (%)	IMF (%)	Dom. Mat. Index (\$)	Export Mat. Index (\$)	Nth Mat. Index (\$)
EBV	+0.2	+3.9	+0.7	+2.3	+24	+32	+45	+41	+2	+1.5	-1.7	+30	+5.1	+2.2	+4.7	-0.6	+1.0	+\$37	+\$39	+\$48
ACC	41%	33%	70%	72%	68%	71%	65%	56%	41%	70%	43%	52%	57%	62%	63%	56%	48%			

Traits Observed: GL, CE, BWT, 200WT(x2), 400WT, SS, FAT, EMA, IMF

Top 1% for Rib, Rump fat & IMF. Top 30% for BW. Potential Stud Sire

An extremely sound, soft, easy doing bull to start the sale, who is ideal for the times, with added do-ability and extra IMF coupled with low birth, adequate growth and good EMA. Dam is thick, easy doing and sound in her make up.



LOT 1

Purchaser: \$

LOT 2

SPRYS REMBRANDT N111 (P)

DOB: 20/08/2017

Colour: Roan

Ident No.: GLSN111

Age in Months: 20

MARELLAN INDESTRUCTABLE (P) Roan
ROYALLA OSTENTATIOUS G404 (P) Roan
MARELLAN REDWING J6065 (P) Roan

BYLAND LEGACY SRD15 ET (H) Red
JR LEGEND 78H (IMP USA) (P) Red
JR FANCY LADY 96E (P) RLW

Sire: ROYALLA REMBRANDT K413 (P) Roan

Dam: SPRYS LEGENDS THELMA F73 (P) (ET) (AI) Red

WEEBOLLABOLLA THEODORE T85 (P) Roan
MARELLAN DORA 8074L (P) (ET) Red
INVERARY DORA W184 (P) Red

SPRYS STARS AND STRIPES 6TH (P) (ET) (AI) RLW
NARRALDA THELMA K123 (P) (AI) Roan
NARRALDA THELMA 10TH (P) Roan

MEASUREMENTS

Scrotal Size |

Weight |

February 2019 Shorthorn GROUP BREEDPLAN

	Calving Ease DIR (%)	Calving Ease DTRS (%)	Gestation Length (days)	Birth Wt. (kg)	200 Day Wt. (kg)	400 Day Wt. (kg)	600 Day Wt. (kg)	Mat. Cow Wt. (kg)	Milk (kg)	Scrotal Size (cm)	Days to Calving (days)	Carcass Wt. (kg)	Eye Muscle Area (sq.cm)	Rib Fat (mm)	Rump Fat (mm)	Retail Beef Yield (%)	IMF (%)	Dom. Mat. Index (\$)	Export Mat. Index (\$)	Nth Mat. Index (\$)
EBV	+7.8	+5.1	-3.5	+2.4	+33	+41	+55	+44	+5	+2.5	-5.6	+39	+4.6	-0.1	-0.4	+1.0	+0.2	+\$49	+\$45	+\$58
ACC	42%	37%	52%	71%	66%	69%	63%	56%	41%	70%	45%	52%	56%	62%	62%	56%	47%			

Traits Observed: CE, BWT, 200WT(x2), 400WT, SS, FAT, EMA, IMF

Top 5% for Scrotal Size, Domestic Index. Top 10% for Calving Ease direct & Gestation Length, 200 wt, Days to calving & Export Maternal Index. Top 15% for Calving Ease Daughters.

Potential Stud Sire

The first Rembrandt son to be offered at Auction. (Rembrandt was purchased for \$42,000). We are retaining a semen interest to be used within the Spry herds only.

Selling full possession and 100% semen marketing.

This young bull continues to impress us for his overall completeness and balance of EBV's in a very sound package. Dam has been a very consistent breeder, who has an excellent set of balanced genetics in her pedigree.



LOT 2

Purchaser: \$

LOT 3

SPRYS GIGABYTES N122 (P) (AI)

DOB: 24/07/2017

Colour: Red

Ident No.: GLSN122

Age in Months: 21

THE GROVE INFORMANT U255 (P) Red
THE GROVE INFORMANT Y463 (P) Roan
THE GROVE U664 (P) (SFA) Roan

GLENELL IMF B90 (P) Red
OUTBACK SPRYS BALANCE G266 (P) (ET) (AI) Red
SCHULLER RED KATE C1 (P) (TWIN) (AI) Red

Sire: THE GROVE GIGABYTES J0837 (P) Red

Dam: SPRYS BALANCES JULIET J67 (P) Red

THE GROVE KOOKABURRA W735 (P) (ET) (AI) Red
THE GROVE KOOKAS DALE E1237 (P) (ET) (AI) Red
THE GROVE R.E. DALE W744 (P) (ET) (AI) Red

SPRYS ALL GOLD D052 (P) Roan
SPRYS GOLDS JULIET G166 (P) Red
SPRYS EXT JULIET D058 (P) (AI) RLW

MEASUREMENTS

Scrotal Size |

Weight |

February 2019 Shorthorn GROUP BREEDPLAN

	Calving Ease DIR (%)	Calving Ease DTRS (%)	Gestation Length (days)	Birth Wt. (kg)	200 Day Wt. (kg)	400 Day Wt. (kg)	600 Day Wt. (kg)	Mat. Cow Wt. (kg)	Milk (kg)	Scrotal Size (cm)	Days to Calving (days)	Carcass Wt. (kg)	Eye Muscle Area (sq.cm)	Rib Fat (mm)	Rump Fat (mm)	Retail Beef Yield (%)	IMF (%)	Dom. Mat. Index (\$)	Export Mat. Index (\$)	Nth Mat. Index (\$)
EBV	-1.9	-4.5	+1.0	+4.0	+33	+58	+65	+59	+6	+1.6	-0.3	+41	+5.7	+1.3	+2.7	-0.1	+1.2	+\$46	+\$44	+\$52
ACC	42%	34%	70%	72%	68%	68%	65%	57%	39%	65%	42%	52%	54%	59%	59%	53%	46%			

Traits Observed: GL, CE, BWT, 200WT(x2), 400WT, SS, FAT, EMA, IMF

Top 1% for 400 day wt & IMF. Top 5% for Rib & Rump fat. Top 10% for 200 day wt. Top 15% for 600 day wt, EMA & Domestic Index.

Potential Stud Sire

An outstanding, dark red, slick coated young Sire who is really impressive for his overall completeness of structure, balance and EBV's in an easy doing package.

DNA tested Homozygous Polled.

Retaining a semen interest to be used within Sprys herds only.

Selling full possession and 100% Semen Marketing Rights.

Dam is a moderate framed, extremely sound with excellent udder and teats. Dam, J67 is in our Elite Donor Programme.



LOT 3

Purchaser: \$

LOT 4

SPRYS GIGABYTES N102 (P) (ET) (AI)

DOB: 07/08/2017

Colour: Red

Ident No.: GLSN102

Age in Months: 20.5

THE GROVE INFORMANT U255 (P) Red
THE GROVE INFORMANT Y463 (P) Roan
THE GROVE U664 (P) (SFA) Roan

GLENELL IMF B90 (P) Red
OUTBACK SPRYS BALANCE G266 (P) (ET) (AI) Red
SCHULLER RED KATE C1 (P) (TWIN) (AI) Red

Sire: THE GROVE GIGABYTES J0837 (P) Red

Dam: SPRYS BALANCES PATENT J76 (P) Red

THE GROVE KOOKABURRA W735 (P) (ET) (AI) Red
THE GROVE KOOKAS DALE E1237 (P) (ET) (AI) Red
THE GROVE R.E. DALE W744 (P) (ET) (AI) Red

WAUKARU PATENT 8161 (IMP USA) (P) (ET) Red
SPRYS PATENTS ANNIE G118 (P) (ET) (AI) Red
SCHULLER ANNB47 (P) Red

MEASUREMENTS

Scrotal Size |

Weight |

February 2019 Shorthorn GROUP BREEDPLAN

	Calving Ease DIR (%)	Calving Ease DTRS (%)	Gestation Length (days)	Birth Wt. (kg)	200 Day Wt. (kg)	400 Day Wt. (kg)	600 Day Wt. (kg)	Mat. Cow Wt. (kg)	Milk (kg)	Scrotal Size (cm)	Days to Calving (days)	Carcass Wt. (kg)	Eye Muscle Area (sq.cm)	Rib Fat (mm)	Rump Fat (mm)	Retail Beef Yield (%)	IMF (%)	Dom. Mat. Index (\$)	Export Mat. Index (\$)	Nth Mat. Index (\$)
EBV	-2.1	+5.4	+0.3	+3.7	+37	+61	+75	+66	+7	+1.5	-0.5	+48	+7.9	+0.4	+0.6	+1.4	+0.9	+\$49	+\$49	+\$59
ACC	42%	34%	54%	70%	66%	68%	64%	54%	36%	68%	42%	51%	55%	61%	61%	55%	46%			

Traits Observed: BWT, 200WT(x2), 400WT, SS, FAT, EMA, IMF

Top 1% for 400 day wt, EMA & Carcass weight. Top 5% for 200 & 600 day wt & IMF. Top 10% for Calving Ease direct, Domestic, Export Maternal & Nthn Indexes. Top 15% for Milk & Rib fat.

A young Sire with plenty of grunt, combining outstanding growth, big EMA, good fat and high IMF. (A rare combination).

A long, easy doing young Sire with plenty of natural thickness and a big hindquarter. Dam is in our elite donor programme.

Selling frozen Embryo's Lots 60 & 61.

DNA tested Homozygous Polled.



LOT 4

Purchaser: \$

LOT 5 OUTBACK SPRYS GRAVITY N293 (P)

DOB: 23/08/2017 **Colour:** Red **Ident No.:** OB N293 **Age in Months:** 20

GLENELL IMF B90 (P) Red
 OUTBACK SPRYS BALANCE G266 (P) (ET) (AI) Red
 SCHULLER RED KATE C1 (P) (TWIN) (AI) Red
Sire: OUTBACK GRAVITY L53 (P) Red Little White
 SPRYS EXCLUSIVE E021 (P) Roan
 OUTBACK CARNATION H144 (P) (AI) RLW
 OUTBACK CARNATION E12 (P) (ET) (AI) RLW

WAUKARU GOLD CARD 5042 (IMP USA) (P) Red
 WAUKARU PATENT 8161 (IMP USA) (P) (ET) Red
 WAUKARU 12H MELITA ROSE 5021 (H) Red
Dam: OUTBACK JUDITH J11 (P) (ET) (AI) Red
 SPRYS ONLY A LEGEND W026 (P) (ET) (AI) Roan
 NEEARRA JUDITH 104 (P) Roan
 NEEARRA JUDITH 67 (P) (AI) Red

MEASUREMENTS	
Scrotal Size	
Weight	

February 2019 Shorthorn GROUP BREEDPLAN

	Calving Ease DIR (%)	Calving Ease DTRS (%)	Gestation Length (days)	Birth Wt. (kg)	200 Day Wt. (kg)	400 Day Wt. (kg)	600 Day Wt. (kg)	Mat. Cow Wt. (kg)	Milk (kg)	Scrotal Size (cm)	Days to Calving (days)	Carcase Wt. (kg)	Eye Muscle Area (sq.cm)	Rib Fat (mm)	Rump Fat (mm)	Retail Beef Yield (%)	IMF (%)	Dom. Mat. Index (\$)	Export Mat. Index (\$)	Nth Mat. Index (\$)
EBV	+0.3	+4.0	-0.9	+2.5	+30	+51	+60	+45	+7	+0.8	+0.7	+38	+2.6	0.0	+0.7	+0.6	+0.4	+\$38	+\$33	+\$48
ACC	45%	36%	43%	73%	67%	70%	64%	56%	41%	70%	43%	52%	57%	63%	63%	57%	48%			

Traits Observed: CE, BWT, 200WT, 400WT, SS, FAT, EMA, IMF

Top 10% for 400 day wt.

DNA tested Homozygous Polled.
 A very good young bull who catches your eye for his overall completeness of structure, balance and carcass in an eye appealing package. Dam is a top young female who is a full sister to Sprys Patents Ace G38 (sold for \$46,000) and has bred outstanding bulls and females who have added carcass shape.



LOT 5

Purchaser: \$

LOT 6 SPRYS COMPLEMENT N98 (P) (ET) (AI)

DOB: 05/08/2017 **Colour:** Red Little White **Ident No.:** GLSN98 **Age in Months:** 20.5

WAUKARU GOLD CARD 502 (IMP USA) (P) Red
 WAUKARU PATENT 8161 (IMP USA) (P) (ET) Red
 WAUKARU 12H MELITA ROSE 5021 (H) Red
Sire: SPRYS PATENT G60 (P) (AI) Red
 LONE PINE REGMONT S106 (P) Roan
 LONE PINE BALM C050 (P) RLW
 LONE PINE BALM U77 (P) Red

COOLONG XSS74 (P) (SFA) RLW
 GLENELL IMF B90 (P) Red
 GLENELL X154 (P) (SFA)
Dam: SPRYS IMF'S JUDITH J100 (P) (ET) (AI) Red
 WAUKARU PATENT 8161 (IMP USA) (P) (ET) Red
 SPRYS PATENTS JUDITH G47 (P) (ET) (AI) Roan
 NEEARRA JUDITH 104 (P) Roan

MEASUREMENTS	
Scrotal Size	
Weight	

February 2019 Shorthorn GROUP BREEDPLAN

	Calving Ease DIR (%)	Calving Ease DTRS (%)	Gestation Length (days)	Birth Wt. (kg)	200 Day Wt. (kg)	400 Day Wt. (kg)	600 Day Wt. (kg)	Mat. Cow Wt. (kg)	Milk (kg)	Scrotal Size (cm)	Days to Calving (days)	Carcase Wt. (kg)	Eye Muscle Area (sq.cm)	Rib Fat (mm)	Rump Fat (mm)	Retail Beef Yield (%)	IMF (%)	Dom. Mat. Index (\$)	Export Mat. Index (\$)	Nth Mat. Index (\$)
EBV	-1.4	-1.0	-1.5	+2.3	+31	+53	+63	+38	+5	+2.1	-2.7	+37	+2.4	+0.5	+1.6	+0.2	+0.7	+\$42	+\$36	+\$50
ACC	45%	37%	51%	72%	67%	69%	66%	59%	44%	70%	44%	54%	57%	63%	63%	57%	48%			

Traits Observed: BWT, 200WT(x2), 400WT, SS, FAT, EMA, IMF

Top 5% for 400 day wt. Top 10% for Rump fat. Top 15% for Rib fat & IMF. Top 20% for 600 day wt.

Potential Stud Sire

An outstanding son of Patent G60 who has bred very well for Adrian Goode, Kingston SA. We are very impressed with this young Sire who puts together growth, moderate birth, good IMF in an eye appealing package. Really impressed with the Mature Cow wt EBV. Half brother sold for \$30,000 in our 2018 Sale.

Dam is in our Elite Donor Programme. J100, is a deep ribbed, moderate framed, slick coated Donor who continues to impress us with her outstanding progeny she produces.



LOT 6

Purchaser: \$

LOT 7

SPRYS REMBRANDT N130 (P) (SFA)

DOB: 11/09/2017

Colour: Red

Ident No.: GLSN130

Age in Months: 19

MARELLAN INDESTRUCTABLE (P) Roan

C P BOSTON BODACIOUS 12H (IMP CAN) (P) Red

ROYALLA OSTENTATIOUS G404 (P) Roan

THE GROVE RED SOX C748 (P) (ET) (AI) Red

MARELLAN REDWING J6065 (P) Roan

THE GROVE C.K. DALE W733 (P) (ET) (AI) Red

Sire: ROYALLA REMBRANDT K413 (P) Roan

Dam: WOOLCOTT F388 (P) (SFA) Red Little White

WEEBOLLABOLLA THEODORE T85 (P) Roan

THE GROVE WHITE CLASS P81 (P) (AI) (APX) White

MARELLAN DORA 8074L (P) (ET) Red

THE GROVE U534 (P) (SFA) Roan

INVERARY DORA W184 (P) Red

THE GROVE CL118 (P) (SFA)

MEASUREMENTS

Scrotal Size |

Weight |

February 2019 Shorthorn GROUP BREEDPLAN

	Calving Ease DIR (%)	Calving Ease DTRS (%)	Gestation Length (days)	Birth Wt. (kg)	200 Day Wt. (kg)	400 Day Wt. (kg)	600 Day Wt. (kg)	Mat. Cow Wt. (kg)	Milk (kg)	Scrotal Size (cm)	Days to Calving (days)	Carcass Wt. (kg)	Eye Muscle Area (sq.cm)	Rib Fat (mm)	Rump Fat (mm)	Retail Beef Yield (%)	IMF (%)	Dom. Mat. Index (\$)	Export Mat. Index (\$)	Nth Mat. Index (\$)
EBV	+3.2	+2.4	-1.9	+2.4	+33	+43	+53	+40	+6	+3.4	-6.9	+38	+4.9	+0.2	+0.1	+1.1	0.0	+\$46	+\$36	+\$53
ACC	35%	27%	43%	68%	63%	66%	59%	50%	31%	68%	39%	46%	51%	58%	58%	52%	41%			

Traits Observed: BWT, 200WT(x2), 400WT, SS, FAT, EMA, IMF

Top 1% for Scrotal Size. Top 5% for Days to calving. Top 10% for 200 day wt. Top 15% for Domestic Index. Top 20% for Nthn Maternal Index.

Potential Stud Sire

Retaining semen for use in Sprys herd.

A thick, long bodied young Sire who has an excellent set of balanced EBV's in a great maturity pattern.



LOT 7

Purchaser: \$

LOT 8

SPRYS COMPLEMENT N85 (P) (ET) (AI)

DOB: 31/07/2017

Colour: Red Little White

Ident No.: GLSN85

Age in Months: 21

WAUKARU GOLD CARD 502 (IMP USA) (P) Red

THE GROVE OSCAR A748 (P) (ET) 9AI) Red

WAUKARU PATENT 8161 (IMP USA) (P) (ET) Red

YAMBURGAN OSSIE D59 (P) (AI) Red

WAUKARU 12H MELITA ROSE 5021 (H) Red

YAMBURGAN VIOLA 8TH (H) Red

Sire: SPRYS PATENT G60 (P) (AI) Red

Dam: SPRYS OSSIES BLANCHE J42 (P) (AI) Red

LONE PINE REGMONT S106 (P) Roan

BROUGHTON PARK VICTORY B050 (P) RLW

LONE PINE BALM C050 (P) RLW

LAKE HAWDON BLANCHE E25 (P) (TWIN) Roan

LONE PINE BALM U77 (P) Red

LAKE HAWDON BEVERLEY BLANCHE (P) (AI) Roan

MEASUREMENTS

Scrotal Size |

Weight |

February 2019 Shorthorn GROUP BREEDPLAN

	Calving Ease DIR (%)	Calving Ease DTRS (%)	Gestation Length (days)	Birth Wt. (kg)	200 Day Wt. (kg)	400 Day Wt. (kg)	600 Day Wt. (kg)	Mat. Cow Wt. (kg)	Milk (kg)	Scrotal Size (cm)	Days to Calving (days)	Carcass Wt. (kg)	Eye Muscle Area (sq.cm)	Rib Fat (mm)	Rump Fat (mm)	Retail Beef Yield (%)	IMF (%)	Dom. Mat. Index (\$)	Export Mat. Index (\$)	Nth Mat. Index (\$)
EBV	-1.1	-0.1	-2.9	+2.5	+25	+43	+54	+38	+6	+1.1	-2.6	+32	+2.6	+0.8	+2.5	-0.1	+0.8	+\$37	+\$34	+\$45
ACC	42%	35%	54%	68%	61%	60%	61%	54%	41%	51%	37%	48%	49%	52%	51%	47%	42%			

Traits Observed: BWT, 200WT(x2), 400WT, SS, FAT, EMA, IMF

Top 5% for Rump fat & IMF. Top 10% for Rib fat.

Another impressive young Sire who has plenty of do-ability, thickness and depth of body with a balanced set of EBV's. Dam, J42, is in our Elite donor programme and has an impressive phenotype.

Purchaser: \$

LOT 9 SPRYS THERMAL ENERGY N89 (P) (ET) (AI)

DOB: 01/08/2017

Colour: Red

Ident No.: GLSN89

Age in Months: 21

SASKVALLEY ROUGHNECK 154R (P) Red
SASKVALLEY TRADITION 106T (P) Red
SASKVALLEY MYRTLE 83N (P) Roan

THE GROVE OSCAR A748 (P) (ET) (AI) Red
YAMBURGAN OSSIE D59 (P) (AI) Red
YAMBURGAN VIOLA 8TH (H) Red

Sire: MURIDALE THERMAL ENERGY 15A (P) Red

Dam: SPRYS OSSIES BLANCHE J42 (P) (AI) Roan

SASKVALLEY BONANZA 219M (P) Roan
MURIDALE GOOSE 32R (P) Roan
MURIDALE SWAN 54N (P) White

BROUGHTON PARK VICTORY B050 (P) RLW
LAKE HAWDON BLANCHE E25 (P) (TWIN) Roan
LAKE HAWDON BEVERLEY BLANCHE (P) (AI) Roan

MEASUREMENTS	
Scrotal Size	
Weight	

February 2019 Shorthorn GROUP BREEDPLAN

	Calving Ease DIR (%)	Calving Ease DTRS (%)	Gestation Length (days)	Birth Wt. (kg)	200 Day Wt. (kg)	400 Day Wt. (kg)	600 Day Wt. (kg)	Mat. Cow Wt. (kg)	Milk (kg)	Scrotal Size (cm)	Days to Calving (days)	Carcase Wt. (kg)	Eye Muscle Area (sq.cm)	Rib Fat (mm)	Rump Fat (mm)	Retail Beef Yield (%)	IMF (%)	Dom. Mat. Index (\$)	Export Mat. Index (\$)	Nth Mat. Index (\$)
EBV	+3.4	+3.6	-3.2	+1.2	+18	+24	+23	+21	+6	+0.9	-3.4	+22	+2.3	+2.8	+6.0	-1.8	+0.9	+\$37	+\$30	+\$40
ACC	36%	26%	55%	70%	65%	67%	62%	52%	25%	67%	38%	48%	52%	59%	59%	52%	42%			

Traits Observed: BWT, 200WT(x2), 400WT, SS, FAT, EMA, IMF

Top 1% for Rib & rump fat. Top 5% for IMF. Top 15% for BW.

DNA tested Homozygous Polled.
Half brother to Lot 8. An outstanding Thermal Energy son. A moderate framed, dark red, thick, easy doing bull with tremendous thickness and depth of body with plenty of carcass shape. N89 is certainly right for the times and would compliment many beef herds, purebred or crossbred. Many good traits in this young bull. Dam is a very impressive female who is in our Elite Donor Programme.



LOT 9

Purchaser: \$

LOT 10 SPRYS INFORMANT N30 (P) (AI)

DOB: 26/05/2017

Colour: Red

Ident No.: GLSN30

Age in Months: 23

THE GROVE INFORMANT U255 (P) Red
THE GROVE INFORMANT Y463 (P) Roan
THE GROVE U664 (P) (SFA) Roan

COOLONG XS574 (P) (SFA) RLW
GLENELL IMF B90 (P) Red
GLENELL X154 (P) (SFA)

Sire: THE GROVE INFORMANT C938 (P) Red

Dam: SPRYS IMF'S JUDITH J100 (P) (ET) (AI) Red

WROXMORE WARRIOR (P) Roan
THE GROVE X171 (P) (SFA) RLW
THE GROVE RC50 (P) (SFA)

WAUKARU PATENT 8161 (IMP USA) (P) (ET) Red
SPRYS PATENTS JUDITH G47 (P) (ET) (AI) Roan
NEEARRA JUDITH 104 (P) Roan

MEASUREMENTS	
Scrotal Size	
Weight	

February 2019 Shorthorn GROUP BREEDPLAN

	Calving Ease DIR (%)	Calving Ease DTRS (%)	Gestation Length (days)	Birth Wt. (kg)	200 Day Wt. (kg)	400 Day Wt. (kg)	600 Day Wt. (kg)	Mat. Cow Wt. (kg)	Milk (kg)	Scrotal Size (cm)	Days to Calving (days)	Carcase Wt. (kg)	Eye Muscle Area (sq.cm)	Rib Fat (mm)	Rump Fat (mm)	Retail Beef Yield (%)	IMF (%)	Dom. Mat. Index (\$)	Export Mat. Index (\$)	Nth Mat. Index (\$)
EBV	-1.3	+5.0	+1.0	+2.5	+29	+45	+53	+40	+1	+1.6	-1.8	+31	+2.8	+1.4	+3.3	-0.7	+0.8	+\$40	+\$34	+\$48
ACC	39%	33%	45%	69%	65%	68%	63%	55%	42%	69%	42%	51%	54%	61%	61%	55%	45%			

Traits Observed: CE, BWT, 200WT(x2), 400WT, SS, FAT, EMA, IMF

Top 5% for Rib & Tump fat and IMF. Top 15% for Calving Ease daughters. Top 20% for 44 day wt.

A very interesting young Sire, who combines an excellent balance of EBV's in a moderate framed package. Thick, dark red, slick coated with heaps of do-ability. Could be used in many herds to give flexibility to his progeny's market opportunities. Half brother to Heritage M213, sold for \$30,000 in 2018 Sale. Sire, Informant C938, really impressed us when he was sold, so much so that we were losing bidders on him and used semen in him.



LOT 10

Purchaser: \$

LOT 11 OUTBACK SPRYS REMBRANDT N282 (P) (AI)

DOB: 03/08/2017 **Colour:** Red Little White **Ident No.:** OB N282 **Age in Months:** 20.5

MARELLAN INDESTRUCTABLE (P) Roan
ROYALLA OSTENTATIOUS G404 (P) Roan
MARELLAN REDWING J6065 (P) Roan

GLENELL IMF B90 (P) Red
SPRYS SOLUTION E006 (P) Red
SPRYS AC. ULTIMATE M. NIAM A101 (P) (ET) (AI) RLW

Sire: ROYALLA REMBRANDT K413 (P) Roan

Dam: OUTBACK JOYCE H181 (P) Red

WEEBOLLABOLLA THEODORE T85 (P) Roan
MARELLAN DORA 8074L (P) (ET) Red
INVERARY DORA W184 (P) Red

LONE PINE STARDOM K55 (P) (AI) RLW
OUTBACK JOYCE E45 (P) (AI) Red
SCHULLER BC JOYCE C48 (P) Roan

MEASUREMENTS	
Scrotal Size	
Weight	

February 2019 Shorthorn GROUP BREEDPLAN

	Calving Ease DIR (%)	Calving Ease DTRS (%)	Gestation Length (days)	Birth Wt. (kg)	200 Day Wt. (kg)	400 Day Wt. (kg)	600 Day Wt. (kg)	Mat. Cow Wt. (kg)	Milk (kg)	Scrotal Size (cm)	Days to Calving (days)	Carcass Wt. (kg)	Eye Muscle Area (sq.cm)	Rib Fat (mm)	Rump Fat (mm)	Retail Beef Yield (%)	IMF (%)	Dom. Mat. Index (\$)	Export Mat. Index (\$)	Nth Mat. Index (\$)
EBV	+3.9	+2.6	-1.3	+3.6	+35	+47	+56	+55	+3	+1.2	-2.2	+36	+2.9	-0.7	-1.4	+0.7	+0.2	+\$37	+\$30	+\$44
ACC	41%	33%	66%	72%	67%	70%	64%	58%	38%	69%	42%	52%	56%	63%	63%	56%	47%			

Traits Observed: GL, CE, BWT, 200WT, 400WT, SS, FAT, EMA, IMF

Top 5% for 200 day wt. Top 15% for 400 day wt.
A good mix of genetics of Rembrandt, Solution E006 and a Stars & Stripes 6th son, Stardom K55. Thus giving you a thick, long, deep bodied son who will impress potential purchasers.



LOT 11

Purchaser: \$

LOT 12 SPRYS THERMAL ENERGY N120 (P) (AI) (SFA)

DOB: 30/08/2017 **Colour:** Red **Ident No.:** GLSN120 **Age in Months:** 20

SASKVALLEY ROUGHNECK 154R (P) Red
SASKVALLEY TRADITION 106T (P) Red
SASKVALLEY MYRTLE 83N (P) Roan

MOOMBI IDEAL X13 (P) (AI) Roan
THE GROVE OLYMPUS A116 (P) Red
THE GROVE HOLLY T200 (P) Red

Sire: MURIDALE THERMAL ENERGY 15A (P) Red

Dam: WOOLCOTT F254 (H) (SFA) Red

SASKVALLEY BONANZA 219M (P) Roan
MURIDALE GOOSE 32R (P) Roan
MURIDALE SWAN 54N (P) White

THE GROVE GALLIPOLI T88 (P) (ET) Red
WOOLCOTT W200 (P) (SFA) Red
WOOLCOTT P103 (P) (SFA)

MEASUREMENTS	
Scrotal Size	
Weight	

February 2019 Shorthorn GROUP BREEDPLAN

	Calving Ease DIR (%)	Calving Ease DTRS (%)	Gestation Length (days)	Birth Wt. (kg)	200 Day Wt. (kg)	400 Day Wt. (kg)	600 Day Wt. (kg)	Mat. Cow Wt. (kg)	Milk (kg)	Scrotal Size (cm)	Days to Calving (days)	Carcass Wt. (kg)	Eye Muscle Area (sq.cm)	Rib Fat (mm)	Rump Fat (mm)	Retail Beef Yield (%)	IMF (%)	Dom. Mat. Index (\$)	Export Mat. Index (\$)	Nth Mat. Index (\$)
EBV	+6.2	-	-2.1	+1.4	+24	+31	+37	+33	-	+1.3	-2.5	+30	+3.0	-0.1	+0.4	+0.5	+0.7	+\$37	+\$39	+\$42
ACC	31%	-	66%	68%	63%	67%	59%	49%	-	68%	37%	44%	49%	56%	56%	49%	39%			

Traits Observed: GL, CE, BWT, 200WT(x2), 400WT, SS, FAT, EMA, IMF

Top 15% for Calving Ease Direct, BW & IMF.

High calving ease, low birth weight with a high IMF in a very sound package and by the great breeding outcross Sire, Thermal Energy 15A, who is breeding very functional, balanced traits in his progeny.

Purchaser: \$



LOT 13 OUTBACK SPRYS CANYON N296 (P)

DOB: 31/08/2017 **Colour:** Red **Ident No.:** OB N296 **Age in Months:** 20

JR LEGEND 78H (IMP USA) (P) Red
 SPRYS TLC CANYON C056 (P) (AI) Red
 THE GROVE PRIMROSE A742 (P) (ET) (AI) Red
Sire: OUTBACK CANYON K116 (P) Red
 WAUKARU PATENT 8161 (IMP USA) (P) (ET) Red
 SPRYS G & M MISS PATENT G215 (P) (ET) (AI) Red Little White
 SCHULLER ANN B47 (P) Red

JR LEGEND 78H (IMP USA) (P) Red
 SPRYS TRUE BLUE Y033 (P) (ET) (AI) Red
 MOOMBI KATE S50 (P) Roan
Dam: OUTBACK SAMMY G73 (P) (AI) Red
 LACHLAN MASTER CARD (P) (ET) Roan
 OUTBACK SAMMY E77 (P) (SFA) Red

MEASUREMENTS	
Scrotal Size	
Weight	

February 2019 Shorthorn GROUP BREEDPLAN

	Calving Ease DIR (%)	Calving Ease DTRS (%)	Gestation Length (days)	Birth Wt. (kg)	200 Day Wt. (kg)	400 Day Wt. (kg)	600 Day Wt. (kg)	Mat. Cow Wt. (kg)	Milk (kg)	Scrotal Size (cm)	Days to Calving (days)	Carcase Wt. (kg)	Eye Muscle Area (sq.cm)	Rib Fat (mm)	Rump Fat (mm)	Retail Beef Yield (%)	IMF (%)	Dom. Mat. Index (\$)	Export Mat. Index (\$)	Nth Mat. Index (\$)
EBV	+7.6	+5.3	-2.1	+1.8	+27	+35	+44	+23	+8	+1.3	-0.6	+32	+2.7	-1.6	-3.0	+1.7	+0.6	+\$37	+\$47	+\$44
ACC	44%	34%	46%	74%	68%	70%	65%	58%	41%	68%	42%	52%	56%	61%	61%	55%	47%			

Traits Observed: CE, BWT, 200WT, 400WT, SS, FAT, EMA, IMF

Top 10% for Calving Ease Direct & Calving Ease Daughters.
Top 15% for Export Maternal Index. Top 20% for BW.

An excellent combination of genetics with 2 crosses of the great JR Legend & Patent 8161 make N296 a very profitable Sire to use in a self replacing herd.



LOT 13

Purchaser: \$

LOT 14 SPRYS THERMAL N87 (P) (TWIN) (AI) (MBR)

DOB: 01/08/2017 **Colour:** Red **Ident No.:** GLSN87 **Age in Months:** 20.5

SASKVALLEY ROUGHNECK 154R (P) Red
 SASKVALLEY TRADITION 106T (P) Red
 SASKVALLEY MYRTLE 83N (P) Roan
Sire: MURIDALE THERMAL ENERGY 15A (P) Red
 SASKVALLEY BONANZA 219M (P) Roan
 MURIDALE GOOSE 32R (P) Roan
 MURIDALE SWAN 54N (P) White

WAUKARU BRISBANE 4111 (IMP USA) (P) Roan
 THE GROVE TRANSLATOR E1264 (P) (ET) (AI) Red
 THE GROVE C.K. DALE W747 (P) (ET) (AI) RLW
Dam: SPRYS H0403 (P) (MBR) Red
 COOLANA Y279 (P) (MBR) Black

MEASUREMENTS	
Scrotal Size	
Weight	

February 2019 Shorthorn GROUP BREEDPLAN

	Calving Ease DIR (%)	Calving Ease DTRS (%)	Gestation Length (days)	Birth Wt. (kg)	200 Day Wt. (kg)	400 Day Wt. (kg)	600 Day Wt. (kg)	Mat. Cow Wt. (kg)	Milk (kg)	Scrotal Size (cm)	Days to Calving (days)	Carcase Wt. (kg)	Eye Muscle Area (sq.cm)	Rib Fat (mm)	Rump Fat (mm)	Retail Beef Yield (%)	IMF (%)	Dom. Mat. Index (\$)	Export Mat. Index (\$)	Nth Mat. Index (\$)
EBV	+3.3	-	-2.6	+1.5	+23	+29	+34	+29	-	+1.3	-1.3	+30	+4.0	+0.7	+1.8	+0.2	+0.8	+\$35	+\$37	+\$40
ACC	30%	-	45%	61%	56%	54%	52%	42%	-	45%	27%	38%	39%	40%	40%	35%	32%			

Traits Observed: BWT, 200WT(x2), 400WT, SS, FAT, EMA, IMF

Top 10% for Rib & Rump fat and IMF.

DNA tested Homozygous Polled.

NOTE: 75% Shorthorn X 25% Angus. Should be OK for Heifers & Cows.

A very safe bull to use with low BW & calving ease plus still having plenty of carcass and fat cover in a high IMF package. Can be used to produce progeny for Thousand Guineas Branded Product to JBS. By the exciting breeding Sire, Thermal Energy 15A and out of a very productive, easy keeping female who is breeding at the top end of our herd. Half brother sold for \$12,000 to Dromore Station in 2017.



LOT 14

Purchaser: \$

LOT 15 SPRYS COOLONG N79 (P) (TWIN) (AI) (SFA)

DOB: 29/07/2017 **Colour:** Red **Ident No.:** GLSN79 **Age in Months:** 20.5

MARRINGTON QUICKSILVER (P) Roan
 GENEFFE UNDERWOOD (P) Red
 GENEFFE BLUSING 12TH (P) (DS) Red
Sire: COOLONG XS574 (P) (SFA) Red Little White
 SPRYS INSTANT POWERHOUSE M43 (P) (AI) Red
 COOLONG ST449 (P) (SFA)

BYLAND GOLD SPEAR (P) RLW
 CROOKED POST GRISSOM 24T (IMP USA) (P) Red
 CROOKED POST RED ROSE 11P (P) Red
Dam: SPRYS GRISSOMS KATE H200 (P) (ET) (AI) Red
 SPRYS RED URANUS V112 (H) (AI) Red
 SCHULLER RED KATE C1 (P) (TWIN) (AI) Red
 SPRYS LEGENDS KATE Y031 (P) (ET) (AI) Red

MEASUREMENTS	
Scrotal Size	
Weight	

February 2019 Shorthorn GROUP BREEDPLAN

	Calving Ease DIR (%)	Calving Ease DTRS (%)	Gestation Length (days)	Birth Wt. (kg)	200 Day Wt. (kg)	400 Day Wt. (kg)	600 Day Wt. (kg)	Mat. Cow Wt. (kg)	Milk (kg)	Scrotal Size (cm)	Days to Calving (days)	Carcass Wt. (kg)	Eye Muscle Area (sq.cm)	Rib Fat (mm)	Rump Fat (mm)	Retail Beef Yield (%)	IMF (%)	Dom. Mat. Index (\$)	Export Mat. Index (\$)	Nth Mat. Index (\$)
EBV	+1.4	+3.5	0.0	+2.7	+27	+42	+47	+37	+4	+1.7	-1.7	+28	+2.2	+0.8	+2.3	-0.7	+0.6	+\$36	+\$30	+\$43
ACC	37%	32%	40%	67%	65%	68%	63%	56%	44%	67%	40%	51%	53%	60%	60%	54%	44%			

Traits Observed: BWT, 200WT, 400WT(x2), SS, FAT, EMA, IMF

Top 5% for Rump fat. Top 10% for Rib fat. Top 25% for IMF.
 A dark red, slick coated bull with exceptional structure and balance in an easy doing package.

Purchaser: \$

LOT 16 OUTBACK SPRYS EIS N279 (P) (AI)

DOB: 01/08/2017 **Colour:** Roan **Ident No.:** OB N279 **Age in Months:**

YAMBURGAN ZEUS D79 (P) (AI) RLW
 YAMBURGAN ZEUS H140 (P) Red
 BROUGHTON PARK HARMONY F55 (P) Red
Sire: FUTURITY EDGED IN STONE K148 (P) (AI) Red Little White
 TURANVILLE CHICAGO Z82 (P) Red
 FUTURITY CHICAGO'S ENIA C38 (P) Red
 FUTURITY ENIAS LEGEND Z32 (P) (A) RLW

GLENELL IMP B90 (P) Red
 SPRYS SOLUTION E006 (P) Red
 SPRYS AC. ULTIMATE M. NIAM A101 (P) (ET) (AI) RLW
Dam: OUTBACK ISABELLA H85 (P) Roan
 SPRYS THE S UN N C39 (P) (A) RLW
 OUTBACK ISABELLA D08 (P) Red

MEASUREMENTS	
Scrotal Size	
Weight	

WITHDRAWN

February 2019 Shorthorn GROUP BREEDPLAN

	Calving Ease DIR (%)	Calving Ease DTRS (%)	Gestation Length (days)	Birth Wt. (kg)	200 Day Wt. (kg)	400 Day Wt. (kg)	600 Day Wt. (kg)	Mat. Cow Wt. (kg)	Milk (kg)	Scrotal Size (cm)	Days to Calving (days)	Carcass Wt. (kg)	Eye Muscle Area (sq.cm)	Rib Fat (mm)	Rump Fat (mm)	Retail Beef Yield (%)	IMF (%)	Dom. Mat. Index (\$)	Export Mat. Index (\$)	Nth Mat. Index (\$)
EBV	+6.4	+6.1	-1.1	+0.5	+22	+34	+37	+17	+4	+1.9	-2.1	+32	+5.9	+2.0	+3.5	+0.1	+0.8	+\$51	+\$50	+\$57
ACC	44%	36%	70%	74%	69%	71%	67%	59%	39%	71%	45%	54%	58%	63%	63%	57%	49%			

Traits Observed: GL, CE, BWT, 200WT, 400WT, SS, FAT, EMA, IMF

Top 5% for Domestic Index, BW, Rump fat & IMF. Top 10% for Export Maternal Index, Calving Ease Daughters & Rib fat. Top 15% for Nthn Maternal Index, Calving Ease Direct & EMA.

Low birth weight with an excellent data set. N279 shows plenty of stoutness and softness in a sound, structured package.

Purchaser: \$

LOT 17 OUTBACK SPRYS REMBRANDT N271 (P) (AI)

DOB: 21/07/2017 **Colour:** Red **Ident No.:** OB N271 **Age in Months:** 20.5

MARELLAN INDESTRUCTABLE (P) Roan
 ROYALLA OSTENTATIOUS G404 (P) Roan
 MARELLAN REDWING J6065 (P) Roan
Sire: ROYALLA REMBRANDT K413 (P) Roan
 WEEBOLLABOLLA THEODORE T85 (P) Roan
 MARELLAN DORA 8074L (P) (ET) Red
 INVERARY DORA W184 (P) Red

BYLAND GOLD SPEAR (P) RLW
 CROOKED POST GRISSOM 24T (IMP USA) (P) Red
 CROOKED POST RED ROSE 11P (P) Red
Dam: OUTBACK MAID K10 (P) (ET) (AI) Red
 SPRYS MASTER BLASTER Z039 (P) Roan
 OUTBACK MASTER MAID B010 (P) (ET) (AI) Roan
 SPRYS MAID X147 (P) Red

MEASUREMENTS	
Scrotal Size	
Weight	

February 2019 Shorthorn GROUP BREEDPLAN

	Calving Ease DIR (%)	Calving Ease DTRS (%)	Gestation Length (days)	Birth Wt. (kg)	200 Day Wt. (kg)	400 Day Wt. (kg)	600 Day Wt. (kg)	Mat. Cow Wt. (kg)	Milk (kg)	Scrotal Size (cm)	Days to Calving (days)	Carcass Wt. (kg)	Eye Muscle Area (sq.cm)	Rib Fat (mm)	Rump Fat (mm)	Retail Beef Yield (%)	IMF (%)	Dom. Mat. Index (\$)	Export Mat. Index (\$)	Nth Mat. Index (\$)
EBV	+4.5	+4.5	-4.0	+3.8	+40	+58	+74	+54	+5	+3.4	-4.7	+52	+8.9	-1.5	-4.0	+3.2	0.0	+\$54	+\$52	+\$66
ACC	41%	33%	64%	72%	66%	70%	62%	55%	36%	69%	42%	50%	56%	62%	62%	56%	46%			

Traits Observed: GL, CE, BWT, 200WT, 400WT, SS, FAT, EMA, IMF

Top 1% for EMA, 200, 400 wt, Scrotal, RBV & Carcase wt. Top 5% for Domestic, Export Maternal & Gestation length and 600 day wt. Top 10% for Days to Calving. Top 20% for Calving Ease Daughters.

Outstanding growth and carcass, very well balanced bull with excellent structure. You will add extra kg's to your herd at sale time. Out of a great breeding line of females in the Maid line. X147 was sold to Shadybrook farms, Quebec and her progeny have sold to \$20,000 for Shadybrook. DNA tested Homozygous Polled.

Purchaser: \$



LOT 18**SPRYS THERMAL N115 (P) (TWIN) (AI) (SFA)**

DOB: 25/08/2017

Colour: Red

Ident No.: GLSN115

Age in Months: 20

SASKVALLEY ROUGHNECK 154R (P) Red

MOOMBI LEDGER A03 (P) Red

SASKVALLEY TRADITION 106T (P) Red

WOOLCOTT DOMINATOR D049 (P) (AI) Red

SASKVALLEY MYRTLE 83N (P) Roan

WOOLCOTT HARRIET 2ND (P) Red

Sire: MURIDALE THERMAL ENERGY 15A (P) Red

Dam: WOOLCOTT F475 (P) (SFA) Roan

SASKVALLEY BONANZA 219M (P) Roan

MURIDALE GOOSE 32R (P) Roan

MOUNT ANNAN SHORTHORNS A115 (P) (SFA)

MURIDALE SWAN 54N (P) White

MEASUREMENTS

Scrotal Size |

Weight |

February 2019 Shorthorn GROUP BREEDPLAN

	Calving Ease DIR (%)	Calving Ease DTRS (%)	Gestation Length (days)	Birth Wt. (kg)	200 Day Wt. (kg)	400 Day Wt. (kg)	600 Day Wt. (kg)	Mat. Cow Wt. (kg)	Milk (kg)	Scrotal Size (cm)	Days to Calving (days)	Carcase Wt. (kg)	Eye Muscle Area (sq.cm)	Rib Fat (mm)	Rump Fat (mm)	Retail Beef Yield (%)	IMF (%)	Dom. Mat. Index (\$)	Export Mat. Index (\$)	Nth Mat. Index (\$)
EBV	+2.9	-	-2.2	+3.6	+34	+49	+57	+46	-	+0.8	+0.6	+40	+5.8	-0.1	-0.4	+1.3	+0.5	+\$39	+\$38	+\$47
ACC	29%	-	46%	55%	56%	62%	53%	43%	-	65%	32%	41%	45%	52%	53%	46%	35%			

Traits Observed: 200WT, 400WT,(x2), SS, FAT, EMA, IMF

Top 10% for 200 & 400 day wt.

Top 15% for 600 day wt, Carcase wt & EMA.

DNA tested Homozygous Polled.

Another outstanding Thermal Energy 15A son who has great thickness and good length of body combining with a top data set bull who will add value to your herd.

**LOT 18**

Purchaser: \$

H. FRANCIS
& CO. PTY. LTD.
STOCK STATION AND REAL ESTATE AGENTS

4/41-43 Moorong Street
 Wagga Wagga NSW 2650
 Ph: 6921 6366
 Fax: 6921 6493

Email: livestock@hfrancisandco.com.au
www.hfrancisandco.com.au

H Francis & Co sell cattle at the Wagga Livestock Marketing Centre every Monday and Sheep & Lambs every Thursday but also offer a range of services including:

- Paddock sales, over the hook sales and direct to feedlot sales
- On farm Stud Sales
- Auctions Plus Sales
- Clearing Sales
- Rural property sales

FOR ANY OF YOUR LIVESTOCK OR PROPERTY NEEDS CONTACT ONE OF OUR FRIENDLY AGENTS

Tim Francis - 0428 263 852
Alex Croker - 0428 326 810
Matt Hawker - 0418 861 320
Sam Sutton - 0448 080 607
Corey Parker - 0458 363 131

FABSTOCK

LIVESTOCK VITAMIN / MINERAL SUPPLEMENT



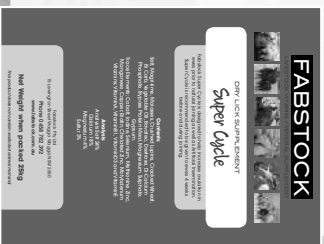
START UP BONUS
SAVE \$\$\$
 TRY FABSTOCK NOW!
 freight free* on your first
 order from Waggai!
 *Minimum order 20 bags

IT'S NOT EXPENSIVE!

Feed Fabstock & improve your livestock's health, nutrition and growth rates from only 3c/head/day with sheep and 17.5c/head/day with cattle.

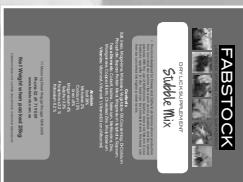
NEW SUPER CYCLE

Fabstock Super Cycle is designed to help increase ovulation in ewes and cows prior to natural joining as well as Artificial Insemination. Super Cycle is recommended to be given to ewes/cows 4 weeks before and during joining.



STUBBLE MIX

Stubble mix is designed to obtain maximum production from low value dry summer feed such as cereal crop stubbles and dry natural pastures. With the use of methionine, Sulphur, Urea and Vitamin D your livestock's appetite for dry feed can be stimulated and this feed can then be converted into higher protein levels.



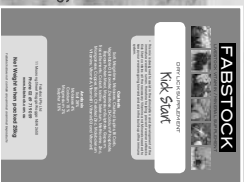
FEEDLOT MIX

This mix is designed for sheep and cattle to obtain maximum body weight gains in a feedlot situation. As well as providing all essential Vitamins, minerals and trace elements Fabstock Feedlot mix also contains buffers and Bovatec to help control acidosis and promote healthy growth levels.



KICK START

This mix is designed to assist in the stimulation and development of the immature weaner rumen therefore helping in the prevention of weaner setbacks. Kick Start contains all the necessary Vitamins and minerals needed to keep your weaners going forward and aid in the build up of the immune system. Dextrose and Bovatec aid in the early growth of your weaners.



RAMBOOSTER

A special mix designed by Peter Harvey to assist stud breeders in obtaining maximum body growth while assisting in improving nourishment and quality of wool in their young rams



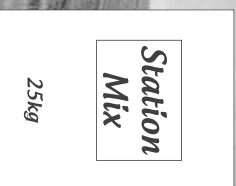
LACTATION PASTURE MIX

This mix is for sheep and cattle before and after pregnancy. Containing higher levels of Calcium, Magnesium and Phosphorus. This mix will help in the prevention of Grass Tetany and Pregnancy Toxaemia. This mix will also increase weight gains for livestock grazing winter pastures and cereal crops.



STATION MIX

A low budget mix produced for large scale graziers wanting to maintain and increase production and growth levels in large numbers of a reduced cost. Station Mix still provides your livestock with most of the required minerals without the expensive vitamins and trace elements.



Phone: 1300 733 644
 www.fabstock.com.au

RUSSEL DURMAN: 0408 694 154
 DOUG WALKER: 0458 782 392
 11 MOORONG STREET, WAGGA WAGGA NSW 2650

ANGUS REFERENCE SIRES

REFERENCE SIRE | **CONNELY CAPITALIST 028**



REFERENCE SIRE | **COONAMBLE HECTOR H249**



ANGUS REFERENCE SIRES

REFERENCE SIRE

V A R INDEX



Congratulations

from
Dr Stuart Geard and the team
at Holbrook Breeders Australia

**ANGUS TOP PRICE
SALE BULL**

This voucher entitles the purchaser to semen collection services
supplied by Holbrook Breeders Australia to
the value of \$500. Collection either at HBA or at Sprys.

UNDERSTANDING ANGUS BREEDPLAN EBVs

What is Angus BREEDPLAN?

Angus BREEDPLAN is the genetic evaluation program adopted by Angus Australia for Angus and Angus influenced beef cattle. Angus BREEDPLAN uses Best Linear Unbiased Prediction (BLUP) technology to produce Estimated Breeding Values (EBVs) of recorded cattle for a range of important production traits (e.g. weight, carcass, fertility).

Angus BREEDPLAN includes pedigree, performance and genomic information from the Angus Australia and New Zealand Angus Association databases to evaluate the genetics of animals across Australia and New Zealand.

Angus BREEDPLAN analyses are conducted by the Agricultural Business Research Institute (ABRI), using software developed by the Animal Genetics and Breeding Unit (AGBU), a joint institute of NSW Agriculture and the University of New England. Ongoing BREEDPLAN research and development is supported by Meat and Livestock Australia.

What is an EBV?

An animal's breeding value can be defined as its genetic merit for each trait. While it is not possible to determine an animal's true breeding value, it is possible to estimate it. These estimates of an animal's true breeding value are called EBVs (Estimated Breeding Values).

Using EBVs to Compare the Genetics of Two Animals

Angus BREEDPLAN EBVs can be used to estimate the expected difference in the genetics of two animals, with the expected difference equating to half the difference in the EBVs of the animals, all other things being equal (e.g. they are joined to the same animal/s).

For example, a bull with a 200 Day Growth EBV of +60 would be expected to produce progeny that are, on average, 10 kg heavier at 200 days of age than a bull with a 200 Day Growth EBV of +40 kg (i.e. 20 kg difference between the sire's EBVs, then halved as the sire only contributes half the genetics).

Or similarly, a bull with an IMF EBV of +3.0 would be expected to produce progeny with on average, 1% more intramuscular

fat in a 400 kg carcass than a bull with a IMF EBV of +1.0 (e.g. 2% difference between the sire's EBVs, then halved as the sire only contributes half the genetics).

Using EBVs to Benchmark an Animal's Genetics with the Breed

EBVs can also be used to benchmark an animal's genetics relative to the genetics of other Angus or Angus infused animals in Australia and New Zealand.

To benchmark an animal's genetics relative to other Angus animals, an animal's EBV can be compared to:

- the breed average EBV
- the percentile table

The current breed average EBV and percentile table is provided in these explanatory notes.

Considering Accuracy

An accuracy value is published in association with each EBV, which is usually displayed as a percentage value immediately below the EBV.

The accuracy value provides an indication of the reliability of the EBV in estimating the animal's genetics (or true breeding value), and is an indication of the amount of information that has been used in the calculation of the EBV.

EBVs with accuracy values below 50% should be considered as preliminary or of low accuracy, 50-74% as of medium accuracy, 75-90% of medium to high accuracy, and 90% or greater as high accuracy.

Description of Angus BREEDPLAN EBVs

EBVs are calculated for a range of traits within Angus BREEDPLAN, covering calving ease, growth, fertility, maternal performance, carcass merit, feed efficiency and structural soundness. A description of each EBV included in this sale catalogue is provided on the following pages.

BREED AVERAGE EBVs																	
Brd Avg	Calving Ease		Birth		Growth				Fertility		Carcass						
	CEDir	CEDtrs	GL	BW	200	400	600	MCW	Milk	SS	DTC	CWT	EMA	RIB	P8	RBY	IMF
Brd Avg	+0.5	+0.5	-4.0	+4.3	+45	+81	+106	+91	+15	+1.8	-4.3	+60	+5.1	+0.0	-0.2	+0.4	+1.7

BREED AVERAGE EBVs						
Brd Avg	Selection Indexes					
	NFI-F	DOC	ABI	DOM	GRN	GRS
Brd Avg	+0.19	+4	+\$115	+\$109	+\$120	+\$112

BIRTH			
Calving Ease Direct	(%)	Genetic differences in the ability of a sire's calves to be born unassisted from 2 year old heifers.	Higher EBVs indicate fewer calving difficulties in 2 year old heifers.
Calving Ease Daughters	(%)	Genetic differences in the ability of a sire's daughters to calve unassisted at 2 years of age.	Higher EBVs indicate fewer calving difficulties in 2 year old heifers.
Gestation Length	days	Genetic differences between animals in the length of time from the date of conception to the birth of the calf.	Lower EBVs indicate shorter gestation length.
Birth Weight	kg	Genetic differences between animals in calf weight at birth.	Lower EBVs indicate lighter birth weight.
GROWTH			
200 Day Growth	kg	Genetic differences between animals in live weight at 200 days of age due to genetics for growth.	Higher EBVs indicate heavier live weight.
400 Day Weight	kg	Genetic differences between animals in live weight at 400 days of age.	Higher EBVs indicate heavier live weight.
600 Day Weight	kg	Genetic differences between animals in live weight at 600 days of age.	Higher EBVs indicate heavier live weight.
Mature Cow Weight	kg	Genetic differences between animals in live weight of cows at 5 years of age.	Higher EBVs indicate heavier mature weight.
Milk	kg	Genetic differences between animals in live weight at 200 days of age due to the maternal contribution of its dam.	Higher EBVs indicate heavier live weight.
FERTILITY			
Days to Calving	kg	Genetic differences between animals in the time from the start of the joining period (i.e. when the female is introduced to a bull) until subsequent calving.	Lower EBVs indicate shorter time to calving.
Scrotal Size	cm	Genetic differences between animals in scrotal circumference at 400 days of age.	Higher EBVs indicate larger scrotal circumference.
CARCASE			
Carcase Weight	kg	Genetic differences between animals in hot standard carcass weight at 750 days of age.	Higher EBVs indicate heavier carcass weight.
Eye Muscle Area	cm ²	Genetic differences between animals in eye muscle area at the 12/13th rib site in a 400 kg carcass.	Higher EBVs indicate larger eye muscle area.
Rib Fat	mm	Genetic differences between animals in fat depth at the 12/13th rib site in a 400 kg carcass.	Higher EBVs indicate more fat.
Rump Fat	mm	Genetic differences between animals in fat depth at the P8 rump site in a 400 kg carcass.	Higher EBVs indicate more fat.
Retail Beef Yield	%	Genetic differences between animals in boned out saleable meat from a 400 kg carcass.	Higher EBVs indicate higher yield.
Intramuscular Fat	%	Genetic differences between animals in intramuscular fat (marbling) at the 12/13th rib site in a 400 kg carcass.	Higher EBVs indicate more intramuscular fat.
FEED EFFICIENCY			
Net Feed Intake (Post Weaning)	kg/day	Genetic differences between animals in feed intake at a standard weight and rate of weight gain when animals are in a growing phase.	Lower EBVs indicate more feed efficiency.
Net Feed Intake (Feedlot)	kg/day	Genetic differences between animals in feed intake at a standard weight and rate of weight gain when animals are in a feedlot phase.	Lower EBVs indicate more feed efficiency.
TEMPERAMENT			
Docility	%	Genetic differences between animals in temperament.	Higher EBVs indicate better temperament.
SELECTION INDEXES			
Angus Breeding Index	\$	Genetic differences between animals in net profitability per cow joined in a typical commercial self replacing herd using Angus bulls. This selection index is not specific to a particular production system or market end-point, but identifies animals that will improve overall profitability in the majority of commercial grass and grain finishing beef production systems.	Higher selection index values indicate greater profitability.
Domestic Index	\$	Genetic differences between animals in net profitability per cow joined in a commercial self replacing herd targeting the domestic supermarket trade.	Higher selection index values indicate greater profitability.
Heavy Grain Index	\$	Genetic differences between animals in net profitability per cow joined in a commercial self replacing herd targeting pasture grown steers with a 200 day feedlot finishing period for the grain fed high quality, highly marbled markets.	Higher selection index values indicate greater profitability.
Heavy Grass Index	\$	Genetic differences between animals in net profitability per cow joined in a commercial self replacing herd targeting pasture finished steers.	Higher selection index values indicate greater profitability.

ANGUS BULLS

LOT 19

SPRYS-W GENERAL N521^{SV}

HBR

DOB: 12/07/2017

Ident No.: LGSN521

Genetic Status: AMFU, CAFU, DDFU, NHFU

TE MANIA YORKSHIRE Y437^{PV}

LT 598 BANDO 9074[#]

TE MANIA BERKLEY B1^{PV}

WATTLETOP USA9074 C118^{PV}

TE MANIA LOWAN Z53[#]

WATTLETOP USUAL U86[#]

Sire: AYRVALE GENERAL G18^{PV}

Dam: WATTLETOP BARUNAH E295[#]

TE MANIA BARTEL B219^{PV}

B/R AMBUSH 28[#]

AYRVALE EASE E3^{PV}

WATTLETOP BARUNAH C136^{SV}

EAGLEHAWK JEDDA B32^{SV}

WATTLETOP BARUNAH Z155^{PV}

MEASUREMENTS

Scrotal Size |

Weight |

Mid-January 2019 Angus GROUP BREEDPLAN

Angus	Calving Ease DIR (%)	Calving Ease DTRS (%)	Gest Length (days)	Birth Wt. (kg)	200 Day Wt. (kg)	400 Day Wt. (kg)	600 Day Wt. (kg)	Mat. Cow Wt. (kg)	Milk (kg)	Days to Calving (days)	Scrotal Size (cm)	Carcass Wt. (kg)	Eye Muscle Area (sq.cm)	Rib Fat (mm)	Rump Fat (mm)	Retail Beef Yield (%)	IMF (%)	Docility	NFI-F	Angus. Breed. Index (\$)	Dom. Index (\$)	Hvy. Grain. Index (\$)	Hvy. Grass. Index (\$)
EBV	+2.4	+3.1	-9.5	+5.7	+63	+104	+140	+121	+15	-4.7	+2.3	+85	+9.5	-0.4	-2.6	+1.3	+2.7	-	+0.09	+\$155	+\$135	+\$176	+\$145
ACC	63%	50%	84%	74%	73%	71%	72%	69%	64%	45%	74%	66%	65%	67%	65%	61%	64%	-	56%				
Perc	20	8	1	82	1	2	2	6	47	42	25	1	3	65	97	15	15	-	38	1	1	2	1

Traits Observed: GL, BWT, 400WT, SS, FAT, EMA, IMF, Genomics

Selling full possession and 100% Semen Marketing Rights. Sprys retain semen to be collected for use in Sprys herd only. General N521 is an outstanding Angus Sire who we consider to have excellent Phenotype and a great set of data. Top 1% for 3 of the 4 Indexes and top 2% for the other. Used in Spring 2017 on 32 cows at Sprys for a 100% conception rate. His Dam, E295 is also the dam of Wattletop G188, who was the most complete all round bull from the 4th Cohort benchmarking programme. G188 is a trait leader for calving ease, growth, fertility and carcass traits. Dam purchased for equal top price at Wattletop dispersal for \$38,000. A G188 daughter was equal top price at the dispersal. N521 Sire, Ayrvale General G18 is producing some exceptional progeny. This is a great opportunity to purchase an outstanding Stud Sire who will add dollars to your programme.



LOT 19

Purchaser: \$

LOT 20

SPRYS-W CAPITALIST N580^{PV}

HBR

DOB: 28/07/2017

Ident No.: LGSN580

Genetic Status: AMFU, CAFU, DDFU, NHFU

SITZ TRAVELELER 8180[#]

HYLINE RIGHT TIME 338[#]

S A V FINAL ANSWER 0035[#]

THE GRANGE WHEEL WRIGHT D6^{PV}

S A V EMULOUS 8145[#]

IMRAN MISS VEGAS U20[#]

Sire: CONEALY CAPITALIST 028[#]

Dam: KANSAS TARIKU G299^{PV}

C R A BEXTOR 872 5205 608[#]

B/R NEW DESIGN 036[#]

PRIDES PITA OF CONANGA 8821[#]

KANSAS TARIKU V94[#]

PRIDES TRAV OF CONANGA 6499[#]

BOOROOMOOKA TARIKU T14[#]

MEASUREMENTS

Scrotal Size |

Weight |

Mid-January 2019 Angus GROUP BREEDPLAN

Angus	Calving Ease DIR (%)	Calving Ease DTRS (%)	Gest Length (days)	Birth Wt. (kg)	200 Day Wt. (kg)	400 Day Wt. (kg)	600 Day Wt. (kg)	Mat. Cow Wt. (kg)	Milk (kg)	Days to Calving (days)	Scrotal Size (cm)	Carcass Wt. (kg)	Eye Muscle Area (sq.cm)	Rib Fat (mm)	Rump Fat (mm)	Retail Beef Yield (%)	IMF (%)	Docility	NFI-F	Angus. Breed. Index (\$)	Dom. Index (\$)	Hvy. Grain. Index (\$)	Hvy. Grass. Index (\$)
EBV	+3.2	+2.5	-4.1	+3.7	+53	+97	+126	+88	+15	-6.8	+2.5	+61	+5.4	+1.8	+2.0	+0.1	+2.4	-	+0.49	+\$152	+\$133	+\$164	+\$145
ACC	57%	40%	71%	72%	70%	69%	69%	65%	60%	40%	71%	64%	61%	65%	62%	59%	61%	-	52%				
Perc	10	15	48	35	10	8	10	55	53	10	18	47	43	7	5	65	23	-	18	2	2	5	1

Traits Observed: BWT, 400WT, SS, FAT, EMA, IMF, Genomics

Another outstanding, easy doing, deep ribbed, balanced sire with exceptional data. Used on heifers at Sprys in Spring of 2017. Dam was purchased at the Kansas Dispersal. His sire is a high accuracy US Sire who will add calving ease and carcass shape in a medium maturity package.



LOT 20

Purchaser: \$





S P R
SHORT
55 years for Spr
• 1964 •



RY'S

HORNS

ry's Shorthorns
- 2019 •

LOT 21

SPRYS-W INDEX N578^{PV}

HBR

DOB: 23/07/2017

Ident No.: LGSN578

Genetic Status: AMFU, CAFU, DDFU, NHFU

G A R NEW DESIGN 5050[#]

LEACHMAN RIGHT TIME^{SV}

G A R INGENUITY[#]

BT RIGHT TIME 24[#]

G A R OBJECTIVE 1067[#]

SITZ EVERELDA ENTENSE 1905[#]

Sire: V A R INDEX 3282^{PV}

Dam: PREMIER Y301 DREAM G13^{PV}

CONNEALY ONWARD[#]

TE MANIA UNLIMITED U3271[#]

SANDPOINT BLACKBIRD 8809[#]

VERMONT DREAM Y301^{PV}

RIVERBEND BLACKBIRD 4301[#]

BANQUET DREAM Q117[#]

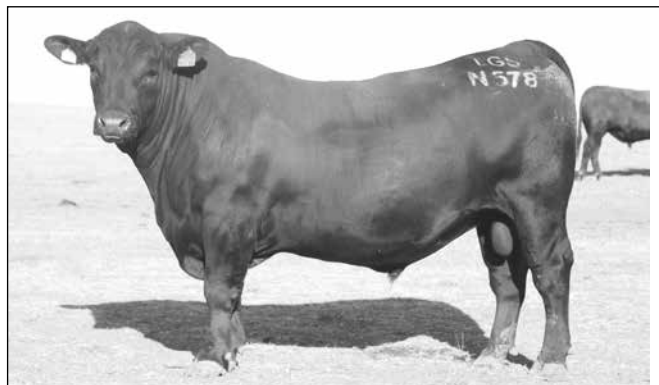
MEASUREMENTS	
Scrotal Size	
Weight	

March 2019 Angus GROUP BREEDPLAN

	Calving Ease DIR (%)	Calving Ease DTRS (%)	Gest Length (days)	Birth Wt. (kg)	200 Day Wt. (kg)	400 Day Wt. (kg)	600 Day Wt. (kg)	Mat. Cow Wt. (kg)	Milk (kg)	Days to Calving (days)	Scrotal Size (cm)	Carcase Wt. (kg)	Eye Muscle Area (sq.cm)	Rib Fat (mm)	Rump Fat (mm)	Retail Beef Yield (%)	IMF (%)	Docility	NFI-F	Angus. Breed. Index (\$)	Dom. Index (\$)	Hvy. Grain. Index (\$)	Hvy. Grass. Index (\$)
EBV	+2.9	+1.0	-4.2	+4.4	+55	+106	+140	+117	+21	-1.6	+1.3	+72	+5.0	-2.5	-1.9	+1.2	+1.6	-	-0.10	+\$132	+\$124	+\$140	+\$131
ACC	60%	46%	73%	74%	73%	72%	71%	67%	61%	44%	72%	65%	64%	67%	64%	61%	64%	-	54%				
Perc	13	40	45	53	7	2	2	8	7	89	75	13	52	98	90	18	55	-	17	18	9	24	9

Traits Observed: GL, BWT, 400WT, SS, FAT, EMA, IMF, Genomics

A bull with plenty of length and stretch but still has excellent carcass shape and correctness. The VAR Index progeny show exceptional growth and length. Dam is an easy doing, correct donor from the very popular Dream Y301 family.



LOT 21

Purchaser: \$

LOT 22

SPRYS-W HECTOR N535^{SV}

APR

DOB: 28/07/2017

Ident No.: LGSN535

Genetic Status: AMFU, CAFU, DD10%, NHFU

HYLINE RIGHT TIME 338[#]

HYLINE RIGHT TIME 338[#]

K C F BENNETT PERFORMER[#]

COOLANA RIGHT TIME C71^{PV}

K C F MISS 589 L182[#]

COOLANA X3[#]

Sire: COONAMBLE HECTOR H249^{SV}

Dam: SPRYS RT GOVERNESS G236[#]

COONAMBLE Z3^{PV}

CONNEALY LEAD ON[#]

COONAMBLE E9^{PV}

COOLANA Z128[#]

BANGDANG LOWAN A61^{PV}

COOLANA X146[#]

MEASUREMENTS	
Scrotal Size	
Weight	

March 2019 Angus GROUP BREEDPLAN

	Calving Ease DIR (%)	Calving Ease DTRS (%)	Gest Length (days)	Birth Wt. (kg)	200 Day Wt. (kg)	400 Day Wt. (kg)	600 Day Wt. (kg)	Mat. Cow Wt. (kg)	Milk (kg)	Days to Calving (days)	Scrotal Size (cm)	Carcase Wt. (kg)	Eye Muscle Area (sq.cm)	Rib Fat (mm)	Rump Fat (mm)	Retail Beef Yield (%)	IMF (%)	Docility	NFI-F	Angus. Breed. Index (\$)	Dom. Index (\$)	Hvy. Grain. Index (\$)	Hvy. Grass. Index (\$)
EBV	-0.5	-2.3	-9.4	+4.3	+41	+73	+91	+70	+7	-6.4	+2.2	+46	+10.8	+4.0	+4.8	+0.9	+0.2	-	+0.29	+\$109	+\$108	+\$92	+\$115
ACC	59%	47%	84%	74%	71%	69%	69%	64%	60%	44%	73%	64%	63%	66%	63%	61%	62%	-	56%				
Perc	64	90	1	50	72	77	82	86	98	14	30	85	1	1	1	30	93	-	64	63	55	83	43

Traits Observed: GL, BWT, 400WT, SS, FAT, EMA, IMF, Genomics

A very good Coonamble Hector son with plenty of growth and natural thickness. Early gestation length, big EMA and great Fat EBV's.



LOT 22

Purchaser: \$



LOT 23

SPRYS-W KOOJAN N549^{SV}

HBR

DOB: 05/08/2017

Ident No.: LGSN549

Genetic Status: AMFU, CAFU, DDFU, NHFU

SCURRTOP REALITY X273[#]

CONNEALY CONSENSUS[#]

MATAURI REALITY 839[#]

CONNEALY KW 1664 CONSENSUS[#]

MATAURI 06663[#]

EBONA OF CONANGA 9680[#]

Sire: KOOJAN HILLS REALITY K46^{SV}

Dam: COOLANA ANNABELL K401[#]

ARDROSSAN DIRECTION Z248^{SV}

DUNOON MIDLAND A017^{PV}

KOOJAN HILLS E266[#]

COOLANA ANNABELL C102^{SV}

KOOJAN HILLS A141[#]

COOLANA X67[#]

MEASUREMENTS

Scrotal Size |

Weight |

March 2019 Angus GROUP BREEDPLAN

	Calving Ease DIR (%)	Calving Ease DTRS (%)	Gest Length (days)	Birth Wt. (kg)	200 Day Wt. (kg)	400 Day Wt. (kg)	600 Day Wt. (kg)	Mat. Cow Wt. (kg)	Milk (kg)	Days to Calving (days)	Scrotal Size (cm)	Carcass Wt. (kg)	Eye Muscle Area (sq.cm)	Rib Fat (mm)	Rump Fat (mm)	Retail Beef Yield (%)	IMF (%)	Docility	NFI-F	Angus. Breed. Index (\$)	Dom. Index (\$)	Hvy. Grain. Index (\$)	Hvy. Grass. Index (\$)
EBV	-1.4	+1.5	-7.3	+4.2	+44	+84	+109	+105	+16	-3.0	+3.2	+61	+3.3	-0.3	-0.3	+0.1	+2.0	-	+0.18	+\$102	+\$101	+\$107	+\$101
ACC	56%	40%	82%	73%	69%	68%	68%	62%	54%	37%	71%	60%	59%	61%	59%	55%	56%	-	48%				
Perc	76	30	7	48	58	43	43	21	41	73	4	48	79	60	55	65	38	-	50	75	75	68	78

Traits Observed: GL, BWT, 400WT, SS, FAT, EMA, IMF, Genomics

Easy doing, soft, thick Angus bull who is extremely sound. The Reality progeny are good doing which is certainly right for the times. Dam was purchased at the Coolana Dispersal by Sprys. Should be OK for heifers and cows.

Purchaser: \$

LOT 24

SPRYS-W BIG SKY N540^{SV}

APR

DOB: 03/08/2017

Ident No.: LGSN540

Genetic Status: AMFU, CAFU, DDFU, NHFU

CONNEALY CONSENSUS[#]

BALD BLAIR ULONG A16^{PV}

CONNEALY EARNAN 076^{EPV}

BALD BLAIR DEBONAIR D34^{SV}

BRAZILIA OF CONANGA 3991 839A[#]

BALD BLAIR X14^{SV}

Sire: MUSGRAVE BIG SKY[#]

Dam: COOLANA K720[#]

S A F 598 BANDO 5175[#]

COOLANA HIGHMARK Z39^{SV}

SAV PRIMROSE 7861[#]

COOLANA C620[#]

S A V PRIMROSE 8244[#]

COOLANA Z221[#]

March 2019 Angus GROUP BREEDPLAN

	Calving Ease DIR (%)	Calving Ease DTRS (%)	Gest Length (days)	Birth Wt. (kg)	200 Day Wt. (kg)	400 Day Wt. (kg)	600 Day Wt. (kg)	Mat. Cow Wt. (kg)	Milk (kg)	Days to Calving (days)	Scrotal Size (cm)	Carcass Wt. (kg)	Eye Muscle Area (sq.cm)	Rib Fat (mm)	Rump Fat (mm)	Retail Beef Yield (%)	IMF (%)	Docility	NFI-F	Angus. Breed. Index (\$)	Dom. Index (\$)	Hvy. Grain. Index (\$)	Hvy. Grass. Index (\$)
EBV	+0.8	+3.1	-8.9	+2.5	+44	+73	+87	+58	+6	-6.9	+0.9	+40	+3.3	+3.4	+4.2	-1.4	+1.7	-	+0.43	+\$106	+\$106	+\$96	+\$108
ACC	61%	50%	83%	73%	71%	70%	70%	66%	60%	38%	73%	63%	62%	64%	61%	57%	60%	-	51%				
Perc	43	8	2	13	56	78	87	95	99	9	88	92	79	1	1	98	50	-	80	68	60	80	63

Traits Observed: GL, BWT, 400WT, SS, FAT, EMA, IMF, Genomics

Should be ideal for heifers. Really impressed with N540's fat and gestation EBV's. Dam was purchased at the Coolana dispersal sale by Sprys. The Big Sky progeny I have seen look outstanding.

Purchaser: \$



LOT 25

SPRYS-W REVENUE N554^{SV}

HBR

DOB: 02/09/2017

Ident No.: LGSN554

Genetic Status: AMFU, CAFU, DDFU, NHFU

RITO REVENUE 5M2 OF 2536 PRE[#]
 CONNEALY REVENUE 7392[#]
 EBONISHA OF CONGANGA 1842[#]

CONNEALY CONSENSUS[#]
 CONNEALY KW 1664 CONSENSUS[#]
 EBONA OF CONGANGA 9680[#]

Sire: COOLANA REVENUE 7392 - L166^{SV}

Dam: COOLANA JANET K175[#]

ARDROSSAN EQUATOR D19^{SV}
 COOLANA KAURI F239[#]
 COOLANA KUARI B161[#]

COOLANA RIGHT TIME C71^{PV}
 COOLANA JANET F254[#]
 COOLANA W26[#]

MEASUREMENTS	
Scrotal Size	
Weight	

March 2019 Angus GROUP BREEDPLAN

	Calving Ease DIR (%)	Calving Ease DTRS (%)	Gest Length (days)	Birth Wt. (kg)	200 Day Wt. (kg)	400 Day Wt. (kg)	600 Day Wt. (kg)	Mat. Cow Wt. (kg)	Milk (kg)	Days to Calving (days)	Scrotal Size (cm)	Carcase Wt. (kg)	Eye Muscle Area (sq.cm)	Rib Fat (mm)	Rump Fat (mm)	Retail Beef Yield (%)	IMF (%)	Docility	NFI-F	Angus. Breed. Index (\$)	Dom. Index (\$)	Hvy. Grain. Index (\$)	Hvy. Grass. Index (\$)
EBV	-4.2	+0.6	-3.5	+5.4	+52	+97	+119	+94	+22	-5.8	+0.9	+7.9	+7.5	-1.6	-1.5	+0.9	+2.2	-	+0.22	+\$123	+\$116	+\$134	+\$117
ACC	53%	37%	71%	68%	66%	64%	64%	60%	53%	33%	67%	57%	55%	59%	56%	51%	53%	-	46%				
Perc	94	48	60	77	15	7	20	43	5	22	88	4	14	92	85	30	30	-	55	33	28	31	38

Traits Observed: BWT, 400WT, SS, FAT, EMA, IMF, Genomics

Another high indexing bull with excellent growth, large EMA and heavy carcass wt EBV's.
 Dam was purchased at the Coolana Dispersal by Sprys.



LOT 25

Purchaser: \$

LOT 26

SPRYS-W RIGHT TIME N556^{SV}

APR

DOB: 03/10/2017

Ident No.: LGSN556

Genetic Status: AMFU, CAFU, DDFU, NHFU

BT CROSSOVER 758N[#]
 SILVEIRAS CONVERSION 8064[#]
 EXG SARAS DREAM S609 R3[#]

CA FUTURE DIRECTION 5321[#]
 B/R 65R GENESIS[#]
 B/R BLACKCAP EMPRESS 127[#]

Sire: SPRYS-W RIGHT TIME L519^{SV}

Dam: COOLANA D538[#]

HYLINE RIGHT TIME 338[#]
 COOLANA B394[#]
 COOLANA T206[#]

PERRY POWER DESIGN 715[#]
 COOLANA X304[#]
 COOLANA T107[#]

MEASUREMENTS	
Scrotal Size	
Weight	

March 2019 Angus GROUP BREEDPLAN

	Calving Ease DIR (%)	Calving Ease DTRS (%)	Gest Length (days)	Birth Wt. (kg)	200 Day Wt. (kg)	400 Day Wt. (kg)	600 Day Wt. (kg)	Mat. Cow Wt. (kg)	Milk (kg)	Days to Calving (days)	Scrotal Size (cm)	Carcase Wt. (kg)	Eye Muscle Area (sq.cm)	Rib Fat (mm)	Rump Fat (mm)	Retail Beef Yield (%)	IMF (%)	Docility	NFI-F	Angus. Breed. Index (\$)	Dom. Index (\$)	Hvy. Grain. Index (\$)	Hvy. Grass. Index (\$)
EBV	-2.3	-5.4	+0.6	+5.8	+49	+81	+114	+92	+17	-2.0	+0.3	+7.5	+6.0	-1.2	-1.9	+0.8	+1.8	-	+0.03	+\$98	+\$94	+\$100	+\$99
ACC	54%	40%	71%	68%	67%	65%	66%	62%	57%	39%	69%	59%	58%	62%	59%	55%	57%	-	49%				
Perc	84	99	98	83	29	51	31	46	29	85	97	8	33	85	90	35	45	-	30	81	88	76	81

Traits Observed: 400WT, SS, FAT, EMA, IMF, Genomics

Plenty of Carcass weight, EMA and Growth in N556, which will give you the extra dollars for his progeny. Dam was purchased at the Coolana Dispersal by Sprys. His pedigree has a combination of carcass and outstanding maternal genetics.

Purchaser: \$



LOT 27

SPRYS-W REALITY N553^{SV}

APR

DOB: 30/08/2017

Ident No.: LGSN553

Genetic Status: AMFU, CAFU, DDFU, NHFU

SCURRTOP REALITY X723[#]

BT CROSSOVER 758N[#]

MATAURI REALITY 839[#]

SILVEIRAS CONVERSION 8064[#]

MATAURI 06663[#]

EXG SARAS DREAM S609 R3[#]

Sire: WITHERSWOOD REALITY K0085^{SV}

Dam: COOLANA ANNABELL L376[#]

TE MANIA UNLIMITED U3271[#]

TE MANIA INFINITY 04 379 AB[#]

WITHERSWOOD TEARFUL G229[#]

COOLANA ANNABELL E102^{SV}

WITHERSWOOD TEARFUL X120[#]

COOLANA X18[#]

March 2019 Angus GROUP BREEDPLAN

	Calving Ease DIR (%)	Calving Ease DTRS (%)	Gest Length (days)	Birth Wt. (kg)	200 Day Wt. (kg)	400 Day Wt. (kg)	600 Day Wt. (kg)	Mat. Cow Wt. (kg)	Milk (kg)	Days to Calving (days)	Scrotal Size (cm)	Carcase Wt. (kg)	Eye Muscle Area (sq.cm)	Rib Fat (mm)	Rump Fat (mm)	Retail Beef Yield (%)	IMF (%)	Docility	NFI-F	Angus. Breed. Index (\$)	Dom. Index (\$)	Hvy. Grain. Index (\$)	Hvy. Grass. Index (\$)
EBV	-1.5	-1.2	-8.2	+5.4	+49	+85	+106	+81	+9	-3.7	+4.5	+53	+4.5	+1.7	+2.8	+0.4	+1.9	-	+0.55	+\$113	+\$111	+\$112	+\$113
ACC	54%	42%	68%	68%	67%	64%	64%	60%	54%	38%	67%	58%	57%	60%	57%	54%	54%	-	49%				
Perc	77	80	4	77	26	39	50	70	94	62	1	72	60	8	2	50	40	-	90	55	45	61	50

Traits Observed: BWT, 400WT, SS, FAT, EMA, IMF, Genomics

A very promising Reality bull who has excellent fat EBV's, large Scrotal and early gestation. Dam was purchased at the Coolana Dispersal by Sprys.

Purchaser: \$

MEASUREMENTS	
Scrotal Size	
Weight	

LOT 28

SPRYS-W DREAM N546^{SV}

APR

DOB: 10/08/2017

Ident No.: LGSN546

Genetic Status: AMFU, CAFU, DDFU, NHFU

BOOROOMOOKA DESIGN Y120^{SV}

BT CROSSOVER 758N[#]

ARDCAIRNIE B59^{PV}

SILVEIRAS CONVERSION 8064[#]

ARDCAIRNIE ELMA Z71[#]

EXG SARAS DREAM S609 R3[#]

Sire: ARDCAIRNIE F96^{SV}

Dam: COOLANA L717[#]

KAROO W109 DIRECTION Z181^{SV}

B/R AMBUSH 28[#]

ARDCAIRNIE DIANARAM D25[#]

COOLANA D360[#]

ARDCAIRNIE DIANARAM B39[#]

COOLANA B302[#]

March 2019 Angus GROUP BREEDPLAN

	Calving Ease DIR (%)	Calving Ease DTRS (%)	Gest Length (days)	Birth Wt. (kg)	200 Day Wt. (kg)	400 Day Wt. (kg)	600 Day Wt. (kg)	Mat. Cow Wt. (kg)	Milk (kg)	Days to Calving (days)	Scrotal Size (cm)	Carcase Wt. (kg)	Eye Muscle Area (sq.cm)	Rib Fat (mm)	Rump Fat (mm)	Retail Beef Yield (%)	IMF (%)	Docility	NFI-F	Angus. Breed. Index (\$)	Dom. Index (\$)	Hvy. Grain. Index (\$)	Hvy. Grass. Index (\$)
EBV	+2.0	+2.2	-4.6	+3.2	+49	+82	+102	+77	+13	-4.3	+2.2	+67	+6.4	-2.2	-2.4	+1.6	+2.1	-	-0.16	+\$120	+\$120	+\$128	+\$117
ACC	58%	44%	83%	72%	70%	69%	69%	65%	60%	41%	72%	63%	62%	65%	62%	58%	61%	-	55%				
Perc	25	19	38	25	29	50	60	77	74	50	30	27	28	97	95	8	35	-	12	40	18	39	38

Traits Observed: GL, BWT, 400WT, SS, FAT, EMA, IMF, Genomics

Should be a good heifer bull. N546 covers a lot of bases, providing calving ease, low birth, high carcass weight, a good EMA and high IMF.

Purchaser: \$

MEASUREMENTS	
Scrotal Size	
Weight	

LOT 29

SPRYS-W HECTOR N574^{PV}

HBR

DOB: 20/07/2017

Ident No.: LGSN574

Genetic Status: AMFU, CAFU, DDFU, NHFU

HYLINE RIGHT TIME 338[#]

LEACHMAN RIGHT TIME^{SV}

K C F BENNETT PERFORMER[#]

BT RIGHT TIME 24J[#]

K C F MISS 589 L182[#]

SITZ EVERELDA ENTENSE 1905[#]

Sire: COONAMBLE HECTOR H249^{SV}

Dam: PREMIER Y301 DREAM G13^{PV}

COONAMBLE Z3^{PV}

TE MANIA UNLIMITED U3271[#]

COONAMBLE E9^{PV}

VERMONT DREAM Y301^{PV}

BANGDANG LOWAN A61^{PV}

BANQUET DREAM Q117[#]

March 2019 Angus GROUP BREEDPLAN

	Calving Ease DIR (%)	Calving Ease DTRS (%)	Gest Length (days)	Birth Wt. (kg)	200 Day Wt. (kg)	400 Day Wt. (kg)	600 Day Wt. (kg)	Mat. Cow Wt. (kg)	Milk (kg)	Days to Calving (days)	Scrotal Size (cm)	Carcase Wt. (kg)	Eye Muscle Area (sq.cm)	Rib Fat (mm)	Rump Fat (mm)	Retail Beef Yield (%)	IMF (%)	Docility	NFI-F	Angus. Breed. Index (\$)	Dom. Index (\$)	Hvy. Grain. Index (\$)	Hvy. Grass. Index (\$)
EBV	+2.0	-0.1	-6.4	+3.6	+46	+88	+121	+105	+14	-2.1	+1.1	+61	+8.0	+0.4	+0.5	+0.8	+0.9	-	-0.10	+\$117	+\$110	+\$113	+\$121
ACC	62%	50%	73%	74%	73%	72%	72%	67%	62%	48%	70%	67%	67%	69%	67%	65%	66%	-	60%				
Perc	25	63	13	33	42	28	17	21	60	85	83	46	10	35	30	35	80	-	17	47	48	60	28

Traits Observed: BWT, 400WT, SS, FAT, EMA, IMF, Genomics

Another good heifer/cow bull with a balanced data set which combines with a big EMA as a bonus. Hector sired the record breaking Millah Murrah heifer at \$190,000.

Purchaser: \$



LOT 30

SPRYS-W HECTOR N542^{SV}

APR

DOB: 08/08/2017

Ident No.: LGSN542

Genetic Status: AM38%, CAFU, DD19%, NH18%

HYLINE RIGHT TIME 338#

RITO 2V1 OF 2536 1407#

K C F BENNETT PERFORMER#

PATAWALLA B65^{PV}

K C F MISS 589 L182#

PATAWALLA NPYX68#

Sire: COONAMBLE HECTOR H249^{SV}

Dam: PATAWALLA D32#

COONAMBLE Z3^{PV}

PATAWALLA X27#

COONAMBLE E9^{PV}

PATAWALLA Z17#

BANGDANG LOWAN A61^{PV}

PATAWALLA NPYX47#

MEASUREMENTS	
Scrotal Size	
Weight	

March 2019 Angus GROUP BREEDPLAN

	Calving Ease DIR (%)	Calving Ease DTRS (%)	Gest Length (days)	Birth Wt. (kg)	200 Day Wt. (kg)	400 Day Wt. (kg)	600 Day Wt. (kg)	Mat. Cow Wt. (kg)	Milk (kg)	Days to Calving (days)	Scrotal Size (cm)	Carcase Wt. (kg)	Eye Muscle Area (sq.cm)	Rib Fat (mm)	Rump Fat (mm)	Retail Beef Yield (%)	IMF (%)	Docility	NFI-F	Angus. Breed. Index (\$)	Dom. Index (\$)	Hvy. Grain. Index (\$)	Hvy. Grass. Index (\$)
EBV	+0.4	-0.5	-3.0	+4.7	+44	+74	+100	+85	+11	-1.4	+0.2	+64	+10.4	-1.1	-1.7	+1.6	+1.6	-	-0.31	+\$104	+\$104	+\$104	+\$106
ACC	59%	44%	83%	74%	72%	70%	70%	67%	60%	43%	72%	65%	63%	67%	64%	61%	62%	-	55%				
Perc	50	70	68	60	58	76	65	63	83	91	98	36	2	83	88	8	55	-	4	72	68	71	68

Traits Observed: GL, BWT, 400WT, SS, FAT, EMA, IMF, Genomics

A balanced, sound Coonamble Hector son who should be OK to use on heifers/cows.

Note: The EMA of +10.4 - Top 2% of the Breed.

Dam has bred well above average and has impressive phenotype.



LOT 30

Purchaser: \$

LOT 31

SPRYS-W HECTOR N577^{PV}

HBR

DOB: 23/07/2017

Ident No.: LGSN577

Genetic Status: AMFU, CAFU, DDFU, NHFU

HYLINE RIGHT TIME 338#

LEACHMAN RIGHT TIME^{SV}

K C F BENNETT PERFORMER#

BT RIGHT TIME 24J#

K C F MISS 589 L182#

SITZ EVERELDA ENTENSE 1905#

Sire: COONAMBLE HECTOR H249^{SV}

Dam: PREMIER Y301 DREAM G13^{PV}

COONAMBLE Z3^{PV}

TE MANIA UNLIMITED U3271#

COONAMBLE E9^{PV}

VERMONT DREAM Y301^{PV}

BANGDANG LOWAN A61^{PV}

BANQUET DREAM Q117#

MEASUREMENTS	
Scrotal Size	
Weight	

March 2019 Angus GROUP BREEDPLAN

	Calving Ease DIR (%)	Calving Ease DTRS (%)	Gest Length (days)	Birth Wt. (kg)	200 Day Wt. (kg)	400 Day Wt. (kg)	600 Day Wt. (kg)	Mat. Cow Wt. (kg)	Milk (kg)	Days to Calving (days)	Scrotal Size (cm)	Carcase Wt. (kg)	Eye Muscle Area (sq.cm)	Rib Fat (mm)	Rump Fat (mm)	Retail Beef Yield (%)	IMF (%)	Docility	NFI-F	Angus. Breed. Index (\$)	Dom. Index (\$)	Hvy. Grain. Index (\$)	Hvy. Grass. Index (\$)
EBV	+2.6	+0.3	-6.1	+4.9	+44	+83	+118	+102	+12	-2.0	+1.0	+61	+6.7	+0.0	+0.4	+0.8	+0.9	-	-0.12	+\$114	+\$106	+\$110	+\$117
ACC	62%	50%	74%	75%	74%	73%	73%	68%	63%	49%	73%	68%	68%	70%	67%	65%	66%	-	61%				
Perc	16	55	16	65	53	46	23	27	81	86	85	47	23	50	33	35	80	-	15	53	60	64	38

Traits Observed: BWT, 400WT, SS, FAT, EMA, IMF, Genomics

Full brother to Lot 29.
Excellent Calving Ease, Carcase Wt & EMA.
Should be OK on heifers/cows.



LOT 31

Purchaser: \$



LOT 32

SPRYS-W EMPEROR N562^{PV}

HBR

DOB: 02/09/2017

Ident No.: LGSN562

Genetic Status: AMFU, CAFU, DDFU, NHFU

TE MANIA BERKLEY B1^{PV}
TE MANIA EMPEROR E343^{PV}
TE MANIA LOWAN Z74^{PV}

GARDENS HIGHMARK#
GARDENS WAVE#
GREEN GARDEN LADY 6255 S2#

Sire: MURRAY EMPEROR L52^{SV}

Dam: MURRAY WAVE J45^{PV}

TE MANIA RED LABEL Z1023 (RED)^{PV}
MURRAY BLACK LABEL G49^{SV}
MURRAY 1407 Y6^{SV}

TE MANIA YORKSHIRE Y437^{PV}
TE MANIA QUEANBEYAN D113^{PV}
TE MANIA QUEANBEYAN Z387^{SV}

MEASUREMENTS	
Scrotal Size	
Weight	

March 2019 Angus GROUP BREEDPLAN

	Calving Ease DIR (%)	Calving Ease DTRS (%)	Gest Length (days)	Birth Wt. (kg)	200 Day Wt. (kg)	400 Day Wt. (kg)	600 Day Wt. (kg)	Mat. Cow Wt. (kg)	Milk (kg)	Days to Calving (days)	Scrotal Size (cm)	Carcass Wt. (kg)	Eye Muscle Area (sq.cm)	Rib Fat (mm)	Rump Fat (mm)	Retail Beef Yield (%)	IMF (%)	Docility	NFI-F	Angus. Breed. Index (\$)	Dom. Index (\$)	Hvy. Grain. Index (\$)	Hvy. Grass. Index (\$)
EBV	+2.4	+2.1	-6.7	+2.3	+44	+79	+99	+56	+18	-8.2	+2.5	+51	+4.2	+2.8	+3.5	-0.9	+2.9	-	+0.46	+\$135	+\$120	+\$143	+\$128
ACC	57%	43%	71%	72%	70%	69%	69%	64%	58%	44%	70%	62^	60%	64%	61%	57%	60%	-	52%				
Perc	19	20	11	10	54	60	67	96	24	3	18	78	65	2	1	94	12	-	83	14	18	20	13

Traits Observed: BWT, 400WT, SS, FAT, EMA, IMF, Genomics

Ideal for heifers. We really like all the data on N562. Excellent indexes with an all round balance of EBV's including high IMF & Rib & Rump fat. Dam is a thick, deep, easy doing female used in our Elite Donor programme at Sprys.

Purchaser: \$

LOT 33

SPRYS-W RIGHT TIME N517^{SV}

APR

DOB: 30/06/2017

Ident No.: LGSN517

Genetic Status: AMFU, CA50%, DDFU, NHFU

TE MANIA BERKLEY B1^{PV}
HAZELDEAN GECKO G440^{SV}
HAZELDEAN C506#

TC TOTAL 410#
LAWSONS NOVAK E313^{SV}
LAWSONS PREDESTINED B770^{SV}

Sire: SPRYS-W GEKO L553^{SV}

Dam: SPRYS-W MISS NOVAC L509#

THE LAURELS GRANITE G90^{PV}
A.J.M. J10#
A.J.M. ANGUS MARTINA F1#

NOONEE DEAN D69^{SV}
TUCKLAN CELANDINE D89#
TUCKLAN CELANDINE D21#

MEASUREMENTS	
Scrotal Size	
Weight	

March 2019 Angus GROUP BREEDPLAN

	Calving Ease DIR (%)	Calving Ease DTRS (%)	Gest Length (days)	Birth Wt. (kg)	200 Day Wt. (kg)	400 Day Wt. (kg)	600 Day Wt. (kg)	Mat. Cow Wt. (kg)	Milk (kg)	Days to Calving (days)	Scrotal Size (cm)	Carcass Wt. (kg)	Eye Muscle Area (sq.cm)	Rib Fat (mm)	Rump Fat (mm)	Retail Beef Yield (%)	IMF (%)	Docility	NFI-F	Angus. Breed. Index (\$)	Dom. Index (\$)	Hvy. Grain. Index (\$)	Hvy. Grass. Index (\$)
EBV	+0.0	+2.1	-7.1	+3.6	+44	+82	+110	+90	+17	-5.9	+2.4	+55	+0.3	+0.1	+1.3	-0.9	+2.1	-	+0.35	+\$113	+\$103	+\$118	+\$110
ACC	50%	34%	67%	67%	65%	63%	63%	58%	50%	34%	67%	56%	55%	59%	56%	51%	54%	-	46%				
Perc	57	20	8	33	55	49	39	52	29	20	20	67	99	45	13	94	35	-	71	55	70	53	58

Traits Observed: BWT, 400WT, SS, FAT, EMA, IMF, Genomics

A good heifer/cow bull with outstanding gestation length and growth.

Purchaser: \$

LOT 34

SPRYS-W INCOME N566^{SV}

APR

DOB: 24/09/2017

Ident No.: LGSN566

Genetic Status: AMFU, CAFU, DD16%, NHFU

BT CROSSOVER 758N#
SILVEIRAS CONVERSION 8064#
EXG SARAS DREAM S609 R3#

COONAMBLE B280^{PV}
KOOJAN HILLS BUDDY F23^{SV}
KOOJAN HILLS D3^{SV}

Sire: SPRYS-W RIGHT TIME L519^{SV}

Dam: SPRYS BUDDYS DESIGN J221#

HYLINE RIGHT TIME 338#
COOLANA B394#
COOLANA T206#

PERRY POWER DESIGN 715#
COOLANA POWER DESIGN A55#
COOLANA Y76#

MEASUREMENTS	
Scrotal Size	
Weight	

March 2019 Angus GROUP BREEDPLAN

	Calving Ease DIR (%)	Calving Ease DTRS (%)	Gest Length (days)	Birth Wt. (kg)	200 Day Wt. (kg)	400 Day Wt. (kg)	600 Day Wt. (kg)	Mat. Cow Wt. (kg)	Milk (kg)	Days to Calving (days)	Scrotal Size (cm)	Carcass Wt. (kg)	Eye Muscle Area (sq.cm)	Rib Fat (mm)	Rump Fat (mm)	Retail Beef Yield (%)	IMF (%)	Docility	NFI-F	Angus. Breed. Index (\$)	Dom. Index (\$)	Hvy. Grain. Index (\$)	Hvy. Grass. Index (\$)
EBV	-1.5	-3.4	-1.3	+5.4	+36	+64	+81	+63	+12	-2.7	+3.3	+50	+10.9	-1.0	-1.0	+2.3	+0.9	-	+0.20	+\$88	+\$96	+\$80	+\$92
ACC	51%	36%	67%	66%	65%	63%	63%	58%	51%	35%	66%	57%	55%	59%	56%	52%	54%	-	46%				
Perc	77	96	91	77	87	93	93	93	76	78	3	80	1	80	75	2	80	-	53	91	85	91	90

Traits Observed: BWT, 400WT, SS, FAT, EMA, IMF, Genomics

A young Angus bull with 10.9 EMA in top 1% of the breed plus the added fertility trait of +3.3 for Scrotal - top 3% of the breed. Dam is a very well made, deep ribbed cow with excellent udder and teat placement.

Purchaser: \$



LOT 35

SPRYS-W RIGHT TIME N567^{SV}

APR

DOB: 02/10/2017

Ident No.: LGSN567

Genetic Status: AMFU, CAFU, DD50%, NHFU

BT CROSSOVER 758N#
 SILVEIRAS CONVERSION 8064#
 EXG SARAS DREAM S609 R3#
Sire: SPRYS-W RIGHT TIME L519^{SV}
 HYLINE RIGHT TIME 338#
 COOLANA B394#
 COOLANA T206#

V D A R NEW TREND 315#
 B/R NEW DESIGN 036#
 B/R BLACKCAP EMPRESS 76#
Dam: COOLANA NIGHTINGALE D26#
 R R SCOTCHCAP 9440#
 CAMPBELL FARMS NIGHTINGALE T573#
 CAMPBELL FARMS N'GALE N508+93#

MEASUREMENTS	
Scrotal Size	
Weight	

March 2019 Angus GROUP BREEDPLAN

	Calving Ease DIR (%)	Calving Ease DTRS (%)	Gest Length (days)	Birth Wt. (kg)	200 Day Wt. (kg)	400 Day Wt. (kg)	600 Day Wt. (kg)	Mat. Cow Wt. (kg)	Milk (kg)	Days to Calving (days)	Scrotal Size (cm)	Carcass Wt. (kg)	Eye Muscle Area (sq.cm)	Rib Fat (mm)	Rump Fat (mm)	Retail Beef Yield (%)	IMF (%)	Docility	NFI-F	Angus. Breed. Index (\$)	Dom. Index (\$)	Hvy. Grain. Index (\$)	Hvy. Grass. Index (\$)
EBV	-1.3	-1.1	-1.9	+4.1	+40	+71	+92	+74	+20	-3.5	+2.1	+54	+2.3	-1.0	-1.4	-0.2	+2.9	-	-0.25	+\$92	+\$92	+\$101	+\$88
ACC	56%	44%	70%	69%	68%	66%	66%	63%	58%	43%	68%	60%	59%	62%	59%	56%	58%	-	51%				
Perc	75	78	85	45	75	81	81	82	14	65	35	70	89	80	83	78	12	-	7	87	91	75	93

Traits Observed: BWT, 400WT, SS, FAT, EMA, IMF, Genomics

Should be OK for heifers/cows. Really impressed with the high IMF, feed efficiency and milk in his EBV's. Dam is an outstanding female from the very popular Nightingale family.

Purchaser: \$

LOT 35B

SPRYS-W HECTOR N547^{SV}

HBR

DOB: 21/08/2017

Ident No.: LGSN547

Genetic Status: AMFU, CAFU, DD50%, NHFU

HYLINE RIGHT TIME 338#
 K C F BENNETT PERFORMER#
 K C F MISS 589 L182#
Sire: COONAMBLE HECTOR H249^{SV}
 COONAMBLE Z3^{PV}
 COONAMBLE E9^{PV}
 BANGDANG LOWAN A61^{PV}

SITZ NEW DESIGN 458N#
 THE LAURELS GRANITE G90^{PV}
 THE LAURELS CLARINET C40^{SV}
Dam: A.J.M. J4#
 VERMONT RIGHT TIME 24J D091^{PV}
 A.J.M. ESTER F5#
 VERMONT ESTER D283#

MEASUREMENTS	
Scrotal Size	
Weight	

March 2019 Angus GROUP BREEDPLAN

	Calving Ease DIR (%)	Calving Ease DTRS (%)	Gest Length (days)	Birth Wt. (kg)	200 Day Wt. (kg)	400 Day Wt. (kg)	600 Day Wt. (kg)	Mat. Cow Wt. (kg)	Milk (kg)	Days to Calving (days)	Scrotal Size (cm)	Carcass Wt. (kg)	Eye Muscle Area (sq.cm)	Rib Fat (mm)	Rump Fat (mm)	Retail Beef Yield (%)	IMF (%)	Docility	NFI-F	Angus. Breed. Index (\$)	Dom. Index (\$)	Hvy. Grain. Index (\$)	Hvy. Grass. Index (\$)
EBV	+0.1	-0.4	-7.6	+6.1	+51	+87	+118	+103	+5	-3.0	+1.2	+64	+6.9	-0.5	-0.9	+1.4	+1.5	-	-0.38	+\$121	+\$114	+\$126	+\$120
ACC	57%	43%	83%	72%	71%	69%	69%	63%	57%	42%	72%	64%	62%	66%	63%	60%	61%	-	55%				
Perc	55	68	6	88	16	30	22	25	99	73	80	37	20	68	73	13	58	-	2	38	35	42	30

Traits Observed: GL, BWT, 400WT, SS, FAT, EMA, IMF, Genomics

Plenty of Weight, high EMA and early Gestation Length and top 2% for Feed Efficiency.

Purchaser: \$



SHORTHORN BULLS

LOT 36

OUTBACK SPRYS GRAVITY N290 (P)

DOB: 15/08/2017

Colour: Roan

Ident No.: OB N290

Age in Months: 20.5

GLENELL IMF B90 (P) Red

WAUKARU PATENT 8161 (IMP USA) (P) (ET) Red

OUTBACK SPRYS BALANCE G266 (P) (ET) (AI) Red

SPRYS PATENT'S ACE G38 (P) (ET) (AI) Roan

SCHULLER RED KATE C1 (P) (TWIN) (AI) Red

NEEARRA JUDITH 104 (P) Roan

Sire: OUTBACK GRAVITY L53 (P) Red Little White

Dam: OUTBACK FRANCES K7 (H) (ET) (AI) White

SPRYS EXCLUSIVE E021 (P) Roan

EDEN PARK DUNDAS AWESOME (P) (AI) White

OUTBACK CARNATION H144 (P) (AI) RLW

EDEN PARK AWESOME LADY 2012 (H) (AI) Roan

OUTBACK CARNATION E12 (P) (ET) (AI) RLW

EDEN PARK LEGENDS FRANCES W004 (P) (ET) (AI) Red

MEASUREMENTS

Scrotal Size |

Weight |

February 2019 Shorthorn GROUP BREEDPLAN

	Calving Ease DIR (%)	Calving Ease DTRS (%)	Gestation Length (days)	Birth Wt. (kg)	200 Day Wt. (kg)	400 Day Wt. (kg)	600 Day Wt. (kg)	Mat. Cow Wt. (kg)	Milk (kg)	Scrotal Size (cm)	Days to Calving (days)	Carcase Wt. (kg)	Eye Muscle Area (sq.cm)	Rib Fat (mm)	Rump Fat (mm)	Retail Beef Yield (%)	IMF (%)	Dom. Mat. Index (\$)	Export Mat. Index (\$)	Nth Mat. Index (\$)
EBV	-3.8	+1.6	-0.6	+3.9	+31	+48	+62	+48	+6	+1.4	+0.9	+38	+5.2	+0.2	+0.5	+1.2	+0.6	+\$31	+\$32	+\$40
ACC	44%	36%	42%	72%	67%	70%	63%	56%	40%	69%	42%	51%	56%	62%	63%	57%	47%			

Traits Observed: CE, BWT, 200WT, 400WT, SS, FAT, EMA, IMF

Top 10% for 400 day wt. Top 20% for 200 & 600 day wt. Top 25% for IMF.

Stud Sire Potential

A very impressive, long, thick, soft, easy doing bull who always catches your eye who has a good balance of EBV's. His Dam line, the Frances females are exceptional mums for longevity, udders and teats plus high IMF.



LOT 36

Purchaser: \$

LOT 37

OUTBACK SPRYS TRANSFER N285 (S)

DOB: 06/08/2017

Colour: Red

Ident No.: OB N285

Age in Months: 20.5

WAUKARU BRISBANE 4111 (IMP USA) (P) Roan

BYLAND GOLD SPEAR (P) RLW

THE GROVE TRANSLATOR E1264 (P) (ET) (AI) Red

CROOKED POST GRISSOM 24T (IMP USA) (P) Red

THE GROVE C.K. DALE W747 (P) (ET) (AI) RLW

CROOKED POST RED ROSE 11P (P) Red

Sire: SPRYS NYES TRANSLATOR K149 (P) Red Little White

Dam: OUTBACK FRANCES H128 (P) (ET) (AI) Roan

ARUBIAL JUPITER Y165 (P) RLW

EDEN PARK DUNDAS AWESOME (P) (AI) White

SPRYS JUPITERS PATTIE B124 (P) Red

EDEN PARK AWESOME LADY 2012 (H) (AI) Roan

TURANVILLE PATTIE W10 (P) (ET) (AI) Red

EDEN PARK LEGENDS FRANCES W004 (P) (ET) (AI) Red

MEASUREMENTS

Scrotal Size |

Weight |

February 2019 Shorthorn GROUP BREEDPLAN

	Calving Ease DIR (%)	Calving Ease DTRS (%)	Gestation Length (days)	Birth Wt. (kg)	200 Day Wt. (kg)	400 Day Wt. (kg)	600 Day Wt. (kg)	Mat. Cow Wt. (kg)	Milk (kg)	Scrotal Size (cm)	Days to Calving (days)	Carcase Wt. (kg)	Eye Muscle Area (sq.cm)	Rib Fat (mm)	Rump Fat (mm)	Retail Beef Yield (%)	IMF (%)	Dom. Mat. Index (\$)	Export Mat. Index (\$)	Nth Mat. Index (\$)
EBV	-1.5	-3.1	-0.9	+3.7	+35	+39	+62	+50	+10	+1.3	+1.2	+37	+4.6	-0.6	-0.7	+1.4	+0.6	+\$22	+\$31	+\$37
ACC	41%	33%	38%	73%	68%	70%	66%	58%	40%	70%	42%	53%	57%	64%	64%	58%	48%			

Traits Observed: CE, BWT, 200WT, 400WT, SS, FAT, EMA, IMF

Top 1% for Milk. Top 5% for 200 day wt. Top 10% for 600 day wt.

N285 will give some extra growth and milk without increasing frame size. Sire is a long bodied complete son who is out of Pattie B124 sold to Chris Nye in the UK. (Embryo's on the ground in the UK).

Purchaser: \$



LOT 38 SPRYS THERMAL ENERGY N46 (P) (AI)

DOB: 13/07/2017 **Colour:** Roan **Ident No.:** GLSN46 **Age in Months:** 21

SASKVALLEY ROUGHNECK 154R (P) Red
 SASKVALLEY TRADITION 106T (P) Red
 SASKVALLEY MYRTLE 83N (P) Roan
Sire: MURIDALE THERMAL ENERGY 15A (P) Red
 SASKVALLEY BONANZA 219M (P) Roan
 MURIDALE GOOSE 32R (P) Roan
 MURIDALE SWAN 54N (P) White

DUNBEACON YAHOO (P) (AI) Red
 DUNBEACON E213 (P) Roan
 DUNBEACON Y3115 (P) (SFA) Roan
Dam: SPRYS CHERRY H74 (P) Roan
 LONE PINE SCHEDULE C053 (P) (AI) Roan
 SPRYS SCHEDULES CHERRY F209 (P) Roan
 LONE PINE CHERRY C056 (H) RLW

MEASUREMENTS	
Scrotal Size	
Weight	

February 2019 Shorthorn GROUP BREEDPLAN

	Calving Ease DIR (%)	Calving Ease DTRS (%)	Gestation Length (days)	Birth Wt. (kg)	200 Day Wt. (kg)	400 Day Wt. (kg)	600 Day Wt. (kg)	Mat. Cow Wt. (kg)	Milk (kg)	Scrotal Size (cm)	Days to Calving (days)	Carcass Wt. (kg)	Eye Muscle Area (sq.cm)	Rib Fat (mm)	Rump Fat (mm)	Retail Beef Yield (%)	IMF (%)	Dom. Mat. Index (\$)	Export Mat. Index (\$)	Nth Mat. Index (\$)
EBV	+5.7	-	-3.6	+1.9	+23	+22	+26	+28	+6	+0.7	-1.3	+26	+3.1	+1.4	+2.7	-0.8	+0.8	+\$29	+\$30	+\$34
ACC	33%	-	67%	71%	66%	68%	63%	54%	27%	68%	38%	48%	53%	60%	60%	52%	42%			

Traits Observed: GL, CE, BWT, 200WT(x2), 400WT, SS, FAT, EMA, IMF

Top 5% for Rib fat, Rump fat & IMF. Top 10% for Gestation Length. Top 20% for Calving Ease Direct.

A stout made, thick, easy keeping son of Thermal Energy 15A who is from a soft, deep, easy keeping dam. Should be OK on heifers. DNA tested Homozygous Polled.



LOT 38

Purchaser: \$

LOT 39 SPRYS THEODORE N36 (P) (AI)

DOB: 06/07/2017 **Colour:** Red **Ident No.:** GLSN36 **Age in Months:** 21

WEEBOLLABOLLA KENT K18 (P) RLW
 WEEBOLLABOLLA QUILPIE Q18 (P) Roan
 WEEBOLLABOLLA HARBOUR H137 (P) Red
Sire: WEEBOLLABOLLA THEODORE T85 (P) Roan
 YAMBURGAN BOXER 58TH (P) Roan
 WEEBOLLABOLLA NINDETHANA (P) (AI) Red
 WEEBOLLABOLLA HELENA H144 (P) Red

THE GROVE OSCAR A748 (P) (ET) (AI) Red
 THE GROVE TIDE-RIP E667 (P) RLW
 THE GROVE RAMONA Z445 (P) Roan
Dam: SPRYS MISS PRIM TIDE (P) (ET0) (AI) Red
 THE GROVE KASPROWICZ W791 (P) Red
 THE GROVE PRIMROSE A742 (P) (ET) (AI) Red
 THE GROVE PRIMROSE R202 (P) Red

MEASUREMENTS	
Scrotal Size	
Weight	

February 2019 Shorthorn GROUP BREEDPLAN

	Calving Ease DIR (%)	Calving Ease DTRS (%)	Gestation Length (days)	Birth Wt. (kg)	200 Day Wt. (kg)	400 Day Wt. (kg)	600 Day Wt. (kg)	Mat. Cow Wt. (kg)	Milk (kg)	Scrotal Size (cm)	Days to Calving (days)	Carcass Wt. (kg)	Eye Muscle Area (sq.cm)	Rib Fat (mm)	Rump Fat (mm)	Retail Beef Yield (%)	IMF (%)	Dom. Mat. Index (\$)	Export Mat. Index (\$)	Nth Mat. Index (\$)
EBV	+12.5	+6.9	-6.7	+1.1	+24	+40	+50	+38	+7	+0.6	-6.6	+32	+5.0	+0.5	+0.7	+0.6	+0.3	+\$56	+\$49	+\$63
ACC	55%	52%	71%	72%	68%	71%	67%	62%	57%	72%	55%	59%	61%	65%	65%	62%	56%			

Traits Observed: GL, CE, BWT, 200WT(x2), 400WT, SS, FAT, EMA, IMF

Top 1% for Domestic Index & Calving Ease direct. Top 5% for Nthn Maternal Index, Calving Ease daughters & Days to calving. Top 10% for Export Maternal & BW. Top 15% for Milk & Rib fat.

Should be OK on heifers/cows. A dark red, long bodied Theodore T85 son who has a top set of Indexes & EBV's. His Dam is out of the living legend Donor, The Grove Primrose A742.

Purchaser: \$



LOT 40 SPRYS THERMAL ENERGY N105 (P) (AI) (SFA)

DOB: 08/08/2017 **Colour:** Red **Ident No.:** GLSN105 **Age in Months:** 20.5

SASKVALLEY ROUGHNECK 154R (P) Red
 SASKVALLEY TRADITION 106T (P) Red
 SASKVALLEY MYRTLE 83N (P) Roan
Sire: MURIDALE THERMAL ENERGY 15A (P) Red
 SASKVALLEY BONANZA 219M (P) Roan
 MURIDALE GOOSE 32R (P) Roan
 MURIDALE SWAN 54N (P) White

JR LEGEND 78H (IMP USA) (P) Red
 SPRYS LEGEND A023 (P) (AI) Red
 SPRYS KIRSTY W121 (P) RLW

Dam: SPRYS D449 (P) (SFA) Red

MEASUREMENTS	
Scrotal Size	
Weight	

February 2019 Shorthorn GROUP BREEDPLAN

	Calving Ease DIR (%)	Calving Ease DTRS (%)	Gestation Length (days)	Birth Wt. (kg)	200 Day Wt. (kg)	400 Day Wt. (kg)	600 Day Wt. (kg)	Mat. Cow Wt. (kg)	Milk (kg)	Scrotal Size (cm)	Days to Calving (days)	Carcase Wt. (kg)	Eye Muscle Area (sq.cm)	Rib Fat (mm)	Rump Fat (mm)	Retail Beef Yield (%)	IMF (%)	Dom. Mat. Index (\$)	Export Mat. Index (\$)	Nth Mat. Index (\$)
EBV	+4.4	-	-1.6	+3.1	+33	+49	+54	+56	+6	+1.0	-1.5	+39	+4.2	+0.2	+0.3	+0.4	+0.7	+\$43	+\$39	+\$48
ACC	32%	-	68%	70%	65%	68%	60%	53%	29%	68%	37%	45%	50%	57%	57%	50%	39%			

Traits Observed: GL, BWT, 200WT(x2), 400WT, SS, FAT, EMA, IMF

Top 10% for 200 & 400 day wts. Top 15% for IMF.

A great son of Thermal Energy who covers all the traits to be a very complete breeding Sire plus outstanding structure.

Purchaser: \$

LOT 41 OUTBACK SPRYS TRANSFER N298 (P)

DOB: 08/09/2017 **Colour:** Red **Ident No.:** OB N298 **Age in Months:** 19

WAUKARU BRISBANE 4111 (IMP USA) (P) Roan
 THE GROVE TRANSLATOR E1264 (P) (ET) (AI) Red
 THE GROVE C.K. DALE W747 (P) (ET) (AI) RLW
Sire: SPRYS NYES TRANSLATOR K149 (P) Red Little White
 ARUBIAL JUPITER Y165 (P) RLW
 SPRYS JUPITERS PATTIE B124 (P) Red
 TURANVILLE PATTIE W10 (P) (ET) (AI) Red

WAUKARU PATENT 8161 (IMP USA) (P) (ET) Red
 SPRYS PATENT'S ACE G38 (P) (ET) (AI) Roan
 NEEARRA JUDITH 104 (P) Roan
Dam: OUTBACK ANN K2 (H) (ET) (AI) Red
 EDEN PARK STOCKMAN (P) (AI) Red
 SCHULLER ANN B47 (P) Red
 CHADWICK R127 (H) (SFA) Roan

MEASUREMENTS	
Scrotal Size	
Weight	

February 2019 Shorthorn GROUP BREEDPLAN

	Calving Ease DIR (%)	Calving Ease DTRS (%)	Gestation Length (days)	Birth Wt. (kg)	200 Day Wt. (kg)	400 Day Wt. (kg)	600 Day Wt. (kg)	Mat. Cow Wt. (kg)	Milk (kg)	Scrotal Size (cm)	Days to Calving (days)	Carcase Wt. (kg)	Eye Muscle Area (sq.cm)	Rib Fat (mm)	Rump Fat (mm)	Retail Beef Yield (%)	IMF (%)	Dom. Mat. Index (\$)	Export Mat. Index (\$)	Nth Mat. Index (\$)
EBV	-3.0	-1.9	-1.8	+3.1	+33	+56	+71	+55	+7	+2.0	-1.8	+40	+3.3	-0.4	+0.4	+0.8	+0.6	+\$37	+\$33	+\$47
ACC	40%	32%	38%	71%	66%	68%	63%	55%	39%	67%	41%	51%	55%	61%	61%	55%	46%			

Traits Observed: BWT, 200WT, 400WT, SS, FAT, EMA, IMF

Top 5% for 400 & 600 day wts. Top 10% for 200 day wt. Top 15% for Milk & Carcase wt. Top 20% for Scrotal size.

This young Sire shows a lot of promise and continues to improve in the last couple of months. Out of an outstanding Ace G38 daughter who goes back to the all Aussie bull, Sprys Zambesi.

Purchaser: \$

LOT 42 SPRYS THERMAL ENERGY N143 (P) (ET) (AI)

DOB: 07/09/2017 **Colour:** Red Little White **Ident No.:** GLSN143 **Age in Months:** 19

SASKVALLEY ROUGHNECK 154R (P) Red
 SASKVALLEY TRADITION 106T (P) Red
 SASKVALLEY MYRTLE 83N (P) Roan
Sire: MURIDALE THERMAL ENERGY 15A (P) Red
 SASKVALLEY BONANZA 219M (P) Roan
 MURIDALE GOOSE 32R (P) Roan
 MURIDALE SWAN 54N (P) White

BYLAND GOLD SPEAR (P) RLW
 RED ROSE GOLD SPEAR RUFFIAN (IMP CAN) (P) Roan
 RED ROSE GUS ROAN LADY 6J (P) Roan
Dam: SPRYS SPEAR'S KATE G6 (P) (AI) Roan
 THE GROVE LEGEND A584 (P) (ET) (AI) Red
 SPRYS KATE D159 (H) (ET) (AI) Red
 SPRYS LEGENDS KATE Y031 (P) (ET) (AI) Red

MEASUREMENTS	
Scrotal Size	
Weight	

February 2019 Shorthorn GROUP BREEDPLAN

	Calving Ease DIR (%)	Calving Ease DTRS (%)	Gestation Length (days)	Birth Wt. (kg)	200 Day Wt. (kg)	400 Day Wt. (kg)	600 Day Wt. (kg)	Mat. Cow Wt. (kg)	Milk (kg)	Scrotal Size (cm)	Days to Calving (days)	Carcase Wt. (kg)	Eye Muscle Area (sq.cm)	Rib Fat (mm)	Rump Fat (mm)	Retail Beef Yield (%)	IMF (%)	Dom. Mat. Index (\$)	Export Mat. Index (\$)	Nth Mat. Index (\$)
EBV	+8.2	+4.9	-2.8	+0.1	+23	+31	+29	+20	+7	+1.5	-3.0	+29	+3.0	+1.6	+3.2	-0.6	+1.0	+\$44	+\$43	+\$47
ACC	38%	28%	56%	71%	66%	68%	62%	54%	30%	68%	40%	48%	53%	59%	59%	53%	43%			

Traits Observed: BWT, 200WT(x2), 400WT, SS, FAT, EMA, IMF

Top 1% for IMF. Top 5% for BW, Rib & Rump fat. Top 10% for Calving Ease direct & Domestic Index. Top 15% for Calving ease daughters & Milk.

Should be OK on heifers. Early maturing, easy keeping bull who is certainly right for the times of a harsh environment. The Thermal Energy 15A X Kate G6 mix has worked very well for us. The Kate family is a very predictable breeding family. This young bull has a lot to offer and would be ideal to ease maturity and add doability & IMF to your herd. Really like the mature cow wt EBV. You will certainly get his progeny off earlier. DNA tested Homozygous Polled.

Purchaser: \$



LOT 43 SPRYS THERMAL ENERGY N132 (P) (ET) (AI)

DOB: 27/07/2017 **Colour:** Red Little White **Ident No.:** GLSN132 **Age in Months:** 21

SASKVALLEY ROUGHNECK 154R (P) Red
 SASKVALLEY TRADITION 106T (P) Red
 SASKVALLEY MYRTLE 83N (P) Roan
Sire: MURIDALE THERMAL ENERGY 15A (P) Red
 SASKVALLEY BONANZA 219M (P) Roan
 MURIDALE GOOSE 32R (P) Roan
 MURIDALE SWAN 54N (P) White

BYLAND GOLD SPEAR (P) RLW
 RED ROSE GOLD SPEAR RUFFIAN (IMP CAN) (P) Roan
 RED ROSE GUS ROAN LADY 6J (P) Roan
Dam: SPRYS SPEAR'S KATE G6 (P) (AI) Roan
 THE GROVE LEGEND A584 (P) (ET) (AI) Red
 SPRYS KATE D159 (H) (ET) (AI) Red
 SPRYS LEGENDS KATE Y031 (P) (ET) (AI) Red

MEASUREMENTS	
Scrotal Size	
Weight	

February 2019 Shorthorn GROUP BREEDPLAN

	Calving Ease DIR (%)	Calving Ease DTRS (%)	Gestation Length (days)	Birth Wt. (kg)	200 Day Wt. (kg)	400 Day Wt. (kg)	600 Day Wt. (kg)	Mat. Cow Wt. (kg)	Milk (kg)	Scrotal Size (cm)	Days to Calving (days)	Carcase Wt. (kg)	Eye Muscle Area (sq.cm)	Rib Fat (mm)	Rump Fat (mm)	Retail Beef Yield (%)	IMF (%)	Dom. Mat. Index (\$)	Export Mat. Index (\$)	Nth Mat. Index (\$)
EBV	+6.5	+4.2	-2.6	+1.0	+25	+34	+34	+25	+7	+1.2	-1.7	+32	+3.6	+1.4	+2.6	-0.2	+0.9	+\$43	+\$50	+\$54
ACC	38%	28%	56%	70%	64%	66%	61%	53%	30%	65%	38%	47%	51%	57%	57%	50%	42%			

Traits Observed: BWT, 200WT, 400WT, SS, FAT, EMA, IMF

Top 5% for Rib & Rump fat & IMF. Top 15% for Calving ease direct & Milk. Top 20% for Calving Ease daughters.

Full brother to Lot 42. Should be ideal for heifers.

This young sire will breed very similar to Lot 42, ease maturity and add some do-ability & IMF. These two bulls would be ideal to put out together to keep some consistency of type in their progeny.

Purchaser: \$

LOT 44 SPRYS BUDDY N69 (S) (AI)

DOB: 21/07/2017 **Colour:** Red Little White **Ident No.:** GLSN69 **Age in Months:** 21

BYLAND GOLD SPEAR (P) RLW
 RED ROSE GOLD SPEAR RUFFIAN (IMP CAN) (P) Roan
 RED ROSE GUS ROAN LADY 6J (P) Roan
Sire: SPRYS PRIMROSE'S BUDDY J17 (P) (ET) (AI) Roan
 THE GROVE KASPROWICZ W791 (P) Red
 THE GROVE PRIMROSE A742 (P) (ET) (AI) Red
 THE GROVE PRIMROSE R202 (P) Red

WAUKARU PATENT 8161 (IMP USA) (P) (ET) Red
 SPRYS PATENT'S ACE G38 (P) (ET) (AI) Roan
 NEARRA JUDITH 104 (P) Roan
Dam: SPRYS ACES PRIMROSE K46 (P) (ET) (AI) Red
 THE GROVE KASPROWICZ W791 (P) Red
 THE GROVE PRIMROSE A742 (P) (ET) (AI) Red
 THE GROVE PRIMROSE R202 (P) Red

MEASUREMENTS	
Scrotal Size	
Weight	

February 2019 Shorthorn GROUP BREEDPLAN

	Calving Ease DIR (%)	Calving Ease DTRS (%)	Gestation Length (days)	Birth Wt. (kg)	200 Day Wt. (kg)	400 Day Wt. (kg)	600 Day Wt. (kg)	Mat. Cow Wt. (kg)	Milk (kg)	Scrotal Size (cm)	Days to Calving (days)	Carcase Wt. (kg)	Eye Muscle Area (sq.cm)	Rib Fat (mm)	Rump Fat (mm)	Retail Beef Yield (%)	IMF (%)	Dom. Mat. Index (\$)	Export Mat. Index (\$)	Nth Mat. Index (\$)
EBV	+9.2	+0.9	-3.5	+1.2	+26	+33	+49	+27	+7	+1.8	-3.1	+37	+4.4	0.0	+0.1	+1.4	+0.6	+\$47	+\$45	+\$48
ACC	49%	43%	57%	74%	70%	72%	67%	59%	43%	73%	47%	57%	60%	65%	66%	59%	51%			

Traits Observed: CE, BWT, 200WT(x2), 400WT, SS, FAT, EMA, IMF

Top 5% for Calving Ease direct. Top 10% for Gestation length & Export Maternal Index. Top 15% for BW & Milk.

A deep, wide sprung young Sire who has a double cross of the living Legend donor, Primrose A742. Dam is a full sister to Sprys Junction sold for \$35,000 to Royalla Stud. Really like the mature cow wt EBV's on N69.



LOT 44

Purchaser: \$

LOT 45 SPRYS THEODORE N119 (P) (AI)

DOB: 03/09/2017

Colour: Roan

Ident No.: GLSN119

Age in Months: 19

WEEBOLLABOLLA KENT K18 (P) RLW

WAUKARU PATENT 8161 (IMP USA) (P) (ET) Red

WEEBOLLABOLLA QUILPIE Q18 (P) Roan

SPRYS PATENT'S ACE G38 (P) (ET) (AI) Roan

WEEBOLLABOLLA HARBOUR H137 (P) Red

NEEARRA JUDITH 104 (P) Roan

Sire: WEEBOLLABOLLA THEODORE T85 (P) Roan

Dam: SPRYS ACES BELLA J143 (P) (AI) Red

YAMBURGAN BOXER 58TH (P) Roan

EVIL0 ZWINGI Z30 (P) (AI) Red

WEEBOLLABOLLA NINDETHANA (P) (AI) Red

EVIL0 ZWINGIS BELLA C52 (P) Roan

WEEBOLLABOLLA HELENA H144 (P) Red

EVIL0 WOODRUFFS BELLA Y29 (P) Roan

February 2019 Shorthorn GROUP BREEDPLAN

	Calving Ease DIR (%)	Calving Ease DTRS (%)	Gestation Length (days)	Birth Wt. (kg)	200 Day Wt. (kg)	400 Day Wt. (kg)	600 Day Wt. (kg)	Mat. Cow Wt. (kg)	Milk (kg)	Scrotal Size (cm)	Days to Calving (days)	Carcass Wt. (kg)	Eye Muscle Area (sq.cm)	Rib Fat (mm)	Rump Fat (mm)	Retail Beef Yield (%)	IMF (%)	Dom. Mat. Index (\$)	Export Mat. Index (\$)	Nth Mat. Index (\$)
EBV	+6.7	-1.0	-2.7	+2.5	+32	+46	+65	+39	+7	+2.3	-5.5	+34	+4.0	-0.3	-0.9	+0.9	+0.5	+\$47	+\$47	+\$59
ACC	55%	52%	72%	73%	69%	71%	68%	64%	57%	71%	55%	60%	62%	66%	66%	62%	57%			

Traits Observed: GL, BWT, 200WT(x2), 400WT, SS, FAT, EMA, IMF

Top 10% for Domestic, Nthn Maternal Index, Scrotal size, Days to calving, 600 day wt & Milk.

N119 has a little more frame than his peers. A long bodied, structurally sound son of the great breeding sire Theodore T85. Dams' calves are at the top end of our herd each year.

Purchaser: \$

LOT 46 OUTBACK SPRYS GRAVITY N289 (P)

DOB: 15/08/2017

Colour: Red

Ident No.: OB N289

Age in Months: 20.5

GLENELL IMF B90 (P) Red

SPRYS RED ROCKET B069 (P) (ET) (AI) Red

OUTBACK SPRYS BALANCE G266 (P) (ET) (AI) Red

ELOORA WINCHESTER E17 (P) (AI) RLW

SCHULLER RED KATE C1 (P) (TWIN) (AI) Red

ELOORA LAVENDAR Z50 (P) (AI) Red

Sire: OUTBACK GRAVITY L53 (P) Red Little White

Dam: OUTBACK JUNE J155 (P) (AI) Roan

SPRYS EXCLUSIVE E021 (P) Roan

LACHLAN MASTER CARD (P) (ET) Roan

OUTBACK CARNATION H144 (P) (AI) RLW

OUTBACK JUNE E71 (P) Roan

OUTBACK CARNATION E12 (P) (ET) (AI) RLW

SCHULLER JUNE B35 (P) Red

February 2019 Shorthorn GROUP BREEDPLAN

	Calving Ease DIR (%)	Calving Ease DTRS (%)	Gestation Length (days)	Birth Wt. (kg)	200 Day Wt. (kg)	400 Day Wt. (kg)	600 Day Wt. (kg)	Mat. Cow Wt. (kg)	Milk (kg)	Scrotal Size (cm)	Days to Calving (days)	Carcass Wt. (kg)	Eye Muscle Area (sq.cm)	Rib Fat (mm)	Rump Fat (mm)	Retail Beef Yield (%)	IMF (%)	Dom. Mat. Index (\$)	Export Mat. Index (\$)	Nth Mat. Index (\$)
EBV	+2.8	+5.2	-1.1	+3.9	+32	+46	+62	+49	+6	+1.2	-0.4	+36	+5.2	+0.7	+1.5	+0.5	+0.5	+\$41	+\$41	+\$56
ACC	41%	31%	45%	72%	67%	69%	64%	55%	39%	69%	40%	51%	56%	62%	63%	56%	46%			

Traits Observed: CE, BWT, 200WT, 400WT, SS, FAT, EMA, IMF

Top 10% for Rib & Rump fats. Top 15% for Nthn Maternal Index, Calving Ease daughters, 200 & 400 day wt. Top 20% for 600 day wt.

A balanced set of EBV's while adding some extra weight in his progeny and has a bonus of positive fat EBV's.

Purchaser: \$

LOT 47 OUTBACK SPRYS ENERGY N273 (P) (AI)

DOB: 26/07/2017

Colour: Red

Ident No.: OB N273

Age in Months: 21

SASKVALLEY ROUGHNECK 154R (P) Red

BYLAND GOLD SPEAR (P) RLW

SASKVALLEY TRADITION 106T (P) Red

CROOKED POST GRISSOM 24T (IMP USA) (P) Red

SASKVALLEY MYRTLE 83N (P) Roan

CROOKED POST RED ROSE 11P (P) Red

Sire: MURIDALE THERMAL ENERGY 15A (P) Red

Dam: OUTBACK FRANCES G126 (P) (AI) Roan

SASKVALLEY BONANZA 219M (P) Roan

EDEN PARK DUNDAS AWESOME (P) (AI) White

MURIDALE GOOSE 32R (P) Roan

EDEN PARK AWESOME LADY 2012 (H) (AI) Roan

MURIDALE SWAN 54N (P) White

EDEN PARK LEGENDS FRANCES W004 (P) (ET) (AI) Red

February 2019 Shorthorn GROUP BREEDPLAN

	Calving Ease DIR (%)	Calving Ease DTRS (%)	Gestation Length (days)	Birth Wt. (kg)	200 Day Wt. (kg)	400 Day Wt. (kg)	600 Day Wt. (kg)	Mat. Cow Wt. (kg)	Milk (kg)	Scrotal Size (cm)	Days to Calving (days)	Carcass Wt. (kg)	Eye Muscle Area (sq.cm)	Rib Fat (mm)	Rump Fat (mm)	Retail Beef Yield (%)	IMF (%)	Dom. Mat. Index (\$)	Export Mat. Index (\$)	Nth Mat. Index (\$)
EBV	+4.7	+2.5	-3.3	+1.4	+25	+34	+35	+24	+9	+0.5	+0.6	+30	+4.0	+0.4	+0.9	+0.4	+0.8	+\$36	+\$38	+\$39
ACC	39%	31%	70%	73%	67%	70%	64%	56%	34%	70%	40%	49%	54%	60%	60%	53%	44%			

Traits Observed: GL, CE, BWT, 200WT, 400WT, SS, FAT, EMA, IMF

Top 5% for IMF & Milk. Top 10% for Gestation Length. Top 15% for BW & Rib fat. Top 20% for Rump fat.

Should be OK for heifers and keep the heifer progeny if required. A structurally sound Thermal Energy 15A son who as some outstanding females in his pedigree so the maternal is going to be very strong. DNA tested Homozygous Polled.

Purchaser: \$



LOT 48 SPRYS CHERRY'S GIGABYTE N66 (P) (AI)

DOB: 20/07/2017 **Colour:** Red **Ident No.:** GLSN66 **Age in Months:** 21

THE GROVE INFORMANT U255 (P) Red
THE GROVE INFORMANT Y463 (P) Roan
THE GROVE U664 (P) (SFA) Roan

DUNBEACON YAHOO (P) (AI) Red
DUNBEACON E213 (P) Roan
DUNBEACON Y3115 (P) (SFA) Roan

Sire: THE GROVE GIGABYTES J0837 (P) Red

Dam: SPRYS CHERRY H151 (P) Red

THE GROVE KOOKABURRA W735 (P) (ET) (AI) Red
THE GROVE KOOKAS DALE E1237 (P) (ET) (AI) Red
THE GROVE R.E. DALE W744 (P) (ET) (AI) Red

SPRYS ICONS WAGON C092 (P) (AI) Roan
SPRYS WAGON'S CHERRY F206 (P) (AI) Roan
LONE PINE CHERRY C032 (P) Roan

February 2019 Shorthorn GROUP BREEDPLAN

	Calving Ease DIR (%)	Calving Ease DTRS (%)	Gestation Length (days)	Birth Wt. (kg)	200 Day Wt. (kg)	400 Day Wt. (kg)	600 Day Wt. (kg)	Mat. Cow Wt. (kg)	Milk (kg)	Scrotal Size (cm)	Days to Calving (days)	Carcass Wt. (kg)	Eye Muscle Area (sq.cm)	Rib Fat (mm)	Rump Fat (mm)	Retail Beef Yield (%)	IMF (%)	Dom. Mat. Index (\$)	Export Mat. Index (\$)	Nth Mat. Index (\$)
EBV	-1.9	+2.1	-0.2	+3.2	+25	+37	+40	+45	+6	+2.2	-1.4	+34	+6.7	-0.8	-1.4	+1.7	+1.0	+\$30	+\$37	+\$29
ACC	38%	29%	68%	72%	68%	70%	65%	57%	37%	70%	42%	51%	55%	62%	62%	55%	46%			

Traits Observed: GL, CE, BWT, 200WT(x2), 400WT, SS, FAT, EMA, IMF

Top 1% for IMF. Top 5% for EMA. Top 10% for Scrotal size. Top 15% for RBV.

A deep, rugged Gigabytes son who should add some extra EMA & IMF to your herd. His Dam, H151 is a slick coated, dark red cow with excellent udder and teat placement.

Purchaser: \$

LOT 49 OUTBACK SPRYS REMBRANDT N284 (P) (AI) (SFA)

DOB: 04/08/2017 **Colour:** Roan **Ident No.:** OB N284 **Age in Months:** 20.5

MARELLAN INDESTRUCTABLE (P) Roan
ROYALLA OSTENTATIOUS G404 (P) Roan
MARELLAN REDWING J6065 (P) Roan

SPRYS MASTER BLASTER 2039 (P) Roan
LACHLAN MASTER CARD (P) (ET) Roan
THE GROVE DALE Z046 (P) (ET) (AI) Red

Sire: ROYALLA REMBRANDT K413 (P) Roan

Dam: OUTBACK SAMMY E77 (P) (SFA) Red

WEEBOLLABOLLA THEODORE T85 (P) Roan
MARELLAN DORA 8074L (P) (ET) Red
INVERARY DORA W184 (P) Red

February 2019 Shorthorn GROUP BREEDPLAN

	Calving Ease DIR (%)	Calving Ease DTRS (%)	Gestation Length (days)	Birth Wt. (kg)	200 Day Wt. (kg)	400 Day Wt. (kg)	600 Day Wt. (kg)	Mat. Cow Wt. (kg)	Milk (kg)	Scrotal Size (cm)	Days to Calving (days)	Carcass Wt. (kg)	Eye Muscle Area (sq.cm)	Rib Fat (mm)	Rump Fat (mm)	Retail Beef Yield (%)	IMF (%)	Dom. Mat. Index (\$)	Export Mat. Index (\$)	Nth Mat. Index (\$)
EBV	+4.5	+4.6	-1.4	+2.9	+32	+42	+53	+38	+7	+2.8	-4.5	+40	+5.9	-0.4	-1.4	+2.0	+0.2	+\$46	+\$45	+\$54
ACC	40%	32%	67%	72%	66%	69%	62%	55%	40%	70%	42%	49%	55%	61%	61%	55%	45%			

Traits Observed: GL, BWT, 200WT, 400WT, SS, FAT, EMA, IMF

Top 5% for Scrotal Size & RBV. Top 15% for Domestic Maternal & Calving Ease daughters. Top 20% for Nthn Maternal Index.

This Rembrandt K413 son has an excellent set of EBV's. Calving Ease, BW, Growth, large EMA & high Yield in one package. His dam is a very good, large volumed cow by the stout made Lachlan Mastercard.

Purchaser: \$

LOT 50 OUTBACK SPRYS REMBRANDT N283 (P) (AI)

DOB: 03/08/2017 **Colour:** Roan **Ident No.:** OB N283 **Age in Months:** 20.5

MARELLAN INDESTRUCTABLE (P) Roan
ROYALLA OSTENTATIOUS G404 (P) Roan
MARELLAN REDWING J6065 (P) Roan

LONE PINE SOLICITOR B083 (P) Red
SPRYS X FACTOR F173 (P) Red
PAKARAKA LEGENDS ROSE A005 (P) Red

Sire: ROYALLA REMBRANDT K413 (P) Roan

Dam: OUTBACK VICTORIA K81 (P) Red

WEEBOLLABOLLA THEODORE T85 (P) Roan
MARELLAN DORA 8074L (P) (ET) Red
INVERARY DORA W184 (P) Red

SPRYS SOLUTION E006 (P) Red
OUTBACK VICTORIA G174 (P) Red
SCHULLER VICTORIA FX25 (P) (SFA) Red

February 2019 Shorthorn GROUP BREEDPLAN

	Calving Ease DIR (%)	Calving Ease DTRS (%)	Gestation Length (days)	Birth Wt. (kg)	200 Day Wt. (kg)	400 Day Wt. (kg)	600 Day Wt. (kg)	Mat. Cow Wt. (kg)	Milk (kg)	Scrotal Size (cm)	Days to Calving (days)	Carcass Wt. (kg)	Eye Muscle Area (sq.cm)	Rib Fat (mm)	Rump Fat (mm)	Retail Beef Yield (%)	IMF (%)	Dom. Mat. Index (\$)	Export Mat. Index (\$)	Nth Mat. Index (\$)
EBV	+5.8	+2.7	-0.4	+2.0	+33	+38	+48	+32	+7	+3.6	-6.2	+38	+5.9	-0.2	-1.0	+1.8	+0.2	+\$47	+\$45	+\$54
ACC	39%	30%	64%	72%	66%	70%	64%	55%	34%	69%	41%	51%	56%	62%	62%	56%	46%			

Traits Observed: GL, CE, BWT, 200WT, 400WT, SS, FAT, EMA, IMF

Top 1% for Scrotal Size. Top 5% for Days to calving. Top 10% for Domestic Maternal Index, 200 day wt & RBV. Top 15% for Milk & EMA. Top 20% for Export Maternal, Nthn Maternal Index & Calving Ease direct.

A long bodied, sound made son of the \$42,000 Rembrandt K413 who has an excellent set of EBV's and Indexes. His Dam has a good combination of low birth and do-ability in her pedigree.

Purchaser: \$



LOT 51 OUTBACK SPRYS EIS N277 (P) (AI)

DOB: 30/07/2017 **Colour:** Red **Ident No.:** OB N277 **Age in Months:** 21

YAMBURGAN ZEUS D79 (P) (AI) RLW GLENELL IMP B90 (P) Red
 YAMBURGAN ZEUS H140 (P) Red SPRYS SOLUTION E006 (P) Red
 BROUGHTON PARK HARMONY F55 (P) Red SPRYS AC. ULTIMATE M. NIAM A101 (P) (ET) (AI) RLW
Sire: FUTURITY EDGED IN STONE K148 (P) (AI) Red Little White **Dam: OUTBACK GAIL H100 (P) Red**
 TURANVILLE CHICAGO Z82 (P) Red
 FUTURITY CHICAGO'S ENIA C38 (P) Red OUTBACK GAIL FX201 (P) (SFA) Roan
 FUTURITY ENIAS LEGEND Z32 (P) (A) RLW

MEASUREMENTS	
Scrotal Size	
Weight	

February 2019 Shorthorn GROUP BREEDPLAN

	Calving Ease DIR (%)	Calving Ease DTRS (%)	Gestation Length (days)	Birth Wt. (kg)	200 Day Wt. (kg)	400 Day Wt. (kg)	600 Day Wt. (kg)	Mat. Cow Wt. (kg)	Milk (kg)	Scrotal Size (cm)	Days to Calving (days)	Carcase Wt. (kg)	Eye Muscle Area (sq.cm)	Rib Fat (mm)	Rump Fat (mm)	Retail Beef Yield (%)	IMF (%)	Dom. Mat. Index (\$)	Export Mat. Index (\$)	Nth Mat. Index (\$)
EBV	+6.4	+5.8	-1.5	-0.1	+17	+27	+29	+18	+3	+0.6	-1.5	+27	+3.8	+1.8	+3.5	-0.2	+0.8	+\$44	+\$43	+\$49
ACC	43%	35%	69%	73%	68%	71%	66%	57%	38%	70%	44%	52%	57%	63%	63%	56%	48%			

Traits Observed: GL, CE, BWT, 200WT, 400WT, SS, FAT, EMA, IMF

Top 1% for Rib fat. Top 5% for BW, Rump fat & IMF. Top 10% for Calving Ease daughters. Top 15% for Calving Ease direct. Top 20% for Domestic Maternal Index.

Should be OK on heifers. A low birth, high calving ease Sire with highly positive fats & IMF.

Purchaser: \$

LOT 52 SPRYS WALLABY N32 (P)

DOB: 18/06/2017 **Colour:** Roan **Ident No.:** GLSN32 **Age in Months:** 22

SPRYS GRANDSLAM T58 (P) (ET) (AI) Roan SPRYS AUSSIE GOLD B086 (P) RLW
 ZENITH BARACK B018 (P) White SPRYS ALL GOLD D052 (P) Roan
 ZENITH V106 (P) (SFA) RLW NEEARRA JUDITH 104 (P) Roan
Sire: ZENITH CAMERON F38 (P) Red **Dam: SPRYS GOLDS ENIA G32 (P) (AI) Roan**
 ZENITH WALLABY W024 (P) (AI) RLW SPRYS MISSION A165 (P) (AI) Red
 ZENITH C57 (P) Roan SPRYS MISSIONS ENIA C177 (P) Red
 ZENITH A106 (P) Roan SPRYS LEGENDS ENIA Y068 (P) (ET) (AI) Red

MEASUREMENTS	
Scrotal Size	
Weight	

February 2019 Shorthorn GROUP BREEDPLAN

	Calving Ease DIR (%)	Calving Ease DTRS (%)	Gestation Length (days)	Birth Wt. (kg)	200 Day Wt. (kg)	400 Day Wt. (kg)	600 Day Wt. (kg)	Mat. Cow Wt. (kg)	Milk (kg)	Scrotal Size (cm)	Days to Calving (days)	Carcase Wt. (kg)	Eye Muscle Area (sq.cm)	Rib Fat (mm)	Rump Fat (mm)	Retail Beef Yield (%)	IMF (%)	Dom. Mat. Index (\$)	Export Mat. Index (\$)	Nth Mat. Index (\$)
EBV	+4.5	+1.1	-1.0	+3.3	+28	+33	+45	+38	+7	+2.2	-1.9	+30	+3.2	-1.6	-2.3	+1.3	+0.8	+\$30	+\$40	+\$37
ACC	41%	34%	49%	69%	66%	69%	63%	57%	40%	68%	40%	51%	55%	61%	62%	55%	46%			

Traits Observed: CE, BWT, 200WT(x2), 400WT, SS, FAT, EMA, IMF

Top 5% for IMF. Top 10% for Scrotal size.

A very promising Zenith Cameron bull who is extremely sound in structure and make up. His sire was used to increase calving ease and IMF. Dam is a top female from a very productive female line.

Purchaser: \$

LOT 53 OUTBACK SPRYS REMBRANDT N280 (P) (AI)

DOB: 01/08/2017 **Colour:** Roan **Ident No.:** OB N280 **Age in Months:** 20.5

MARELLAN INDESTRUCTABLE (P) Roan ROCKDELL PRIDE 50K (IMP CAN) (P) RLW
 ROYALLA OSTENTATIOUS G404 (P) Roan SPRYS PRIDES STAR C034 (P) (AI) Red
 MARELLAN REDWING J6065 (P) Roan SPRYS T12 LOVELY W204 (P) Red
Sire: ROYALLA REMBRANDT K413 (P) Roan **Dam: OUTBACK FRANCES J325 (P) (ET) (AI) Red Little White**
 WEEBOLLABOLLA THEODORE T85 (P) Roan JR LEGEND 78H (IMP USA) (P) Red
 MARELLAN DORA 8074L (P) (ET) Red LACHLAN FRANCIS 2024 (P) (TWIN) (ET) (AI) RLW
 INVERARY DORA W184 (P) Red HIGHDENUP FRANCES (P) (AI) RLW

MEASUREMENTS	
Scrotal Size	
Weight	

February 2019 Shorthorn GROUP BREEDPLAN

	Calving Ease DIR (%)	Calving Ease DTRS (%)	Gestation Length (days)	Birth Wt. (kg)	200 Day Wt. (kg)	400 Day Wt. (kg)	600 Day Wt. (kg)	Mat. Cow Wt. (kg)	Milk (kg)	Scrotal Size (cm)	Days to Calving (days)	Carcase Wt. (kg)	Eye Muscle Area (sq.cm)	Rib Fat (mm)	Rump Fat (mm)	Retail Beef Yield (%)	IMF (%)	Dom. Mat. Index (\$)	Export Mat. Index (\$)	Nth Mat. Index (\$)
EBV	+5.7	+3.9	-1.3	+2.5	+30	+31	48	+31	+6	+1.8	-2.9	+31	+3.3	+0.9	+1.5	+0.2	+0.4	+\$38	+\$39	+\$51
ACC	42%	34%	66%	72%	67%	70%	64%	56%	37%	70%	43%	52%	56%	62%	63%	56%	47%			

Traits Observed: GL, CE, BWT, 200WT, 400WT, SS, FAT, EMA, IMF

Top 10% for Rib & Rump fats. Top 20% for Calving Ease direct. Top 25% for Nthn Maternal Index.

Another Rembrandt who continues to produce high calving ease and weight plus the added bonus of positive fat EBV's. His Dam is from the very productive Frances family who excels in longevity, udder & teat placement.

Purchaser: \$



LOT 54 OUTBACK SPRYS BUDDY N270 (P) (AI)

DOB: 28/06/2017 **Colour:** White **Ident No.:** OB N270 **Age in Months:** 21.5

BYLAND GOLD SPEAR (P) RLW
 RED ROSE GOLD SPEAR RUFFIAN (IMP CAN) (P) Roan
 RED ROSE GUS ROAN LADY 6J (P) Roan

WAUKARU PATENT 8161 (IMP USA) (P) (ET) Red
 SPRYS ROCK SOLID H5 (P) (ET) (AI) Red
 SCHULLER ANN B47 (P) Red

Sire: SPRYS PRIMROSE'S BUDDY J17 (P) (ET) (AI) Roan
 THE GROVE KASPROWICZ W791 (P) Red
 THE GROVE PRIMROSE A742 (P) (ET) (AI) Red
 THE GROVE PRIMROSE R202 (P) Red

Dam: OUTBACK JUNE L81 (P) Roan
 LACHLAN MASTER CARD (P) (ET) Roan
 OUTBACK JUNE E71 (P) Roan
 SCHULLER JUNE B35 (P) Red

MEASUREMENTS	
Scrotal Size	
Weight	

February 2019 Shorthorn GROUP BREEDPLAN

	Calving Ease DIR (%)	Calving Ease DTRS (%)	Gestation Length (days)	Birth Wt. (kg)	200 Day Wt. (kg)	400 Day Wt. (kg)	600 Day Wt. (kg)	Mat. Cow Wt. (kg)	Milk (kg)	Scrotal Size (cm)	Days to Calving (days)	Carcase Wt. (kg)	Eye Muscle Area (sq.cm)	Rib Fat (mm)	Rump Fat (mm)	Retail Beef Yield (%)	IMF (%)	Dom. Mat. Index (\$)	Export Mat. Index (\$)	Nth Mat. Index (\$)
EBV	+9.4	+4.8	-1.6	+0.4	+26	+27	+41	+19	+8	+1.9	-2.3	+37	+5.3	+1.3	+2.2	+0.9	+0.7	+\$46	+\$53	+\$57
ACC	45%	38%	68%	72%	68%	70%	64%	56%	39%	71%	44%	53%	57%	63%	64%	57%	48%			

Traits Observed: GL, CE, BWT, 200WT, 400WT, SS, FAT, EMA, IMF

Top 5% for Export Maternal Index, Calving Ease direct, BW, Milk, Rib & Rump fats. Top 15% for Domestic Maternal Index, Calving Ease daughters & IMF.
 The only white in the catalogue. A medium framed sire who excels in most traits with plenty of carcass shape and IMF as a bonus. Excellent Mature Cow wt EBV.

Purchaser: \$

LOT 55 OUTBACK SPRYS GRAVITY N291 (P)

DOB: 19/08/2017 **Colour:** Roan **Ident No.:** OB N291 **Age in Months:** 20

GLENELL IMF B90 (P) Red
 OUTBACK SPRYS BALANCE G266 (P) (ET) (AI) Red
 SCHULLER RED KATE C1 (P) (TWIN) (AI) Red

WAUKARU GOLD CARD 5042 (IMP USA) (P) Red
 WAUKARU PATENT 8161 (IMP USA) (P) (ET) Red
 WAUKARU 12H MELITA ROSE 5021 (H) Red

Sire: OUTBACK GRAVITY L53 (P) Red Little White
 SPRYS EXCLUSIVE E021 (P) Roan
 OUTBACK CARNATION H144 (P) (AI) RLW
 OUTBACK CARNATION E12 (P) (ET) (AI) RLW

Dam: OUTBACK JUDITH H219 (P) (ET) (AI) Roan
 SPRYS ONLY A LEGEND W026 (P) (ET) (AI) Roan
 NEEARRA JUDITH 104 (P) Roan
 NEEARRA JUDITH 67 (P) (AI) Red

MEASUREMENTS	
Scrotal Size	
Weight	

February 2019 Shorthorn GROUP BREEDPLAN

	Calving Ease DIR (%)	Calving Ease DTRS (%)	Gestation Length (days)	Birth Wt. (kg)	200 Day Wt. (kg)	400 Day Wt. (kg)	600 Day Wt. (kg)	Mat. Cow Wt. (kg)	Milk (kg)	Scrotal Size (cm)	Days to Calving (days)	Carcase Wt. (kg)	Eye Muscle Area (sq.cm)	Rib Fat (mm)	Rump Fat (mm)	Retail Beef Yield (%)	IMF (%)	Dom. Mat. Index (\$)	Export Mat. Index (\$)	Nth Mat. Index (\$)
EBV	+4.0	+5.7	-1.2	+0.7	+23	+35	+43	+27	+6	+1.1	-0.4	+33	+2.9	-1.0	-1.2	+1.6	+0.4	+\$37	+\$40	+\$45
ACC	45%	36%	43%	72%	66%	69%	63%	55%	41%	70%	43%	51%	56%	62%	62%	56%	47%			

Traits Observed: CE, BWT, 200WT, 400WT, SS, FAT, EMA, IMF

Top 10% for Calving Ease daughters & BW. Top 15% for RBV.
 A large number of outstanding females in this bull's pedigree make him a sure bet to produce well in a self replacing herd.

Purchaser: \$

LOT 56 SPRYS REMBRANDT N151 (P) (APX)

DOB: 05/10/2017 **Colour:** Red **Ident No.:** GLSN151 **Age in Months:** 18

MARELLAN INDESTRUCTABLE (P) Roan
 ROYALLA OSTENTATIOUS G404 (P) Roan
 MARELLAN REDWING J6065 (P) Roan

COOTA PARK A165 (P) (APX) Other
 COOTA PARK C206 (P) (APX) Other
 COOTA PARK A180 (P) (APX) Other

Sire: ROYALLA REMBRANDT K413 (P) Roan
 WEEBOLLABOLLA THEODORE T85 (P) Roan
 MARELLAN DORA 8074L (P) (ET) Red
 INVERARY DORA W184 (P) Red

Dam: COOTA PARK BLUE-E E20 (P) (APX) Red
 COOTA PARK A31 (P) (APX) Other
 COOTA PARK C28 (P) (APX) Other
 COOTA PARK W249 (P) (APX) Other

MEASUREMENTS	
Scrotal Size	
Weight	

February 2019 Shorthorn GROUP BREEDPLAN

	Calving Ease DIR (%)	Calving Ease DTRS (%)	Gestation Length (days)	Birth Wt. (kg)	200 Day Wt. (kg)	400 Day Wt. (kg)	600 Day Wt. (kg)	Mat. Cow Wt. (kg)	Milk (kg)	Scrotal Size (cm)	Days to Calving (days)	Carcase Wt. (kg)	Eye Muscle Area (sq.cm)	Rib Fat (mm)	Rump Fat (mm)	Retail Beef Yield (%)	IMF (%)	Dom. Mat. Index (\$)	Export Mat. Index (\$)	Nth Mat. Index (\$)
EBV	+6.5	-	-2.3	+1.1	+26	+33	+44	+31	-	+2.1	-4.8	+35	+4.4	-0.2	-0.5	+1.3	+0.2	+\$43	+\$42	+\$52
ACC	31%	-	38%	44%	42%	43%	40%	35%	-	41%	28%	34%	37%	39%	39%	35%	32%			

Traits Observed: BWT, 200WT(x2), 400WT, SS, FAT, EMA, IMF

Top 10% for BW & Days to Calving. Top 15% for Calving Ease Direct. Top 20% for Domestic Maternal Index.

Note: 75% Shorthorn X 25% Shorthorn Angus

N151 has an excellent combination of genetics with is dam the Blue-e E20 cow who comes from many generations of selecting for high feed efficiency. Think about the amount of grass and/or grain you could save by breeding progeny which have high feed efficiency.

Purchaser: \$



LOT 57 OUTBACK SPRYS CANYON N278 (P) (AI)

DOB: 30/07/2017

Colour: Roan

Ident No.: OB N278

Age in Months: 20.5

BYLAND LEGACY SRD15 ET (H) Red
 JR LEGEND 78H (IMP USA) (P) Red
 JR FANCY LADY 96E (P) RLW

SPRYS RED ROCKET B069 (P) (ET) (AI) Red
 ELOORA WINCHESTER E17 (P) (AI) RLW
 ELOORA LAVENDAR Z50 (P) (AI) Red

MEASUREMENTS	
Scrotal Size	
Weight	

Sire: SPRYS TLC CANYON C056 (P) (AI) Red

Dam: SPRYS OUTBACK WINCHESTERS JUDITH K513 (P) (ET) (AI) Roan

THE GROVE KASPROWICZ W791 (P) Red
 THE GROVE PRIMROSE A742 (P) (ET) (AI) Red
 THE GROVE PRIMROSE R202 (P) Red

SPRYS ONLY A LEGEND W026 (P) (ET) (AI) Roan
 NEEARRA JUDITH 104 (P) Roan
 NEEARRA JUDITH 67 (P) (AI) Red

February 2019 Shorthorn GROUP BREEDPLAN

	Calving Ease DIR (%)	Calving Ease DTRS (%)	Gestation Length (days)	Birth Wt. (kg)	200 Day Wt. (kg)	400 Day Wt. (kg)	600 Day Wt. (kg)	Mat. Cow Wt. (kg)	Milk (kg)	Scrotal Size (cm)	Days to Calving (days)	Carcass Wt. (kg)	Eye Muscle Area (sq.cm)	Rib Fat (mm)	Rump Fat (mm)	Retail Beef Yield (%)	IMF (%)	Dom. Mat. Index (\$)	Export Mat. Index (\$)	Nth Mat. Index (\$)
EBV	+1.4	+2.0	-2.1	+4.1	+32	+40	+61	+41	+7	+1.2	-1.4	+30	+1.2	-0.9	-1.1	+0.1	+0.7	+\$28	+\$34	+\$42
ACC	46%	41%	66%	73%	68%	71%	66%	58%	47%	71%	47%	55%	59%	64%	64%	59%	51%			

Traits Observed: GL, CE, BWT, 200WT, 400WT, SS, FAT, EMA, IMF

Top 15% for 200 day wt, Milk & IMF. Top 20% for 400 day wt.

An excellent combination of performance genetics and maternal in N278 makes him an ideal sire to use in a self replacing herd of purebred or crossbred. His pedigree is stacked with four top Donor females.

Purchaser: \$

HVC

artificial breeding specialists

- Highly experienced and professional team.
- Extensive range of on-farm embryo transfer services.
- Industry leading embryo production services from our custom built donor centre.
- Comprehensive management of breeding programs including synchrony programs and hormone treatments, AI services (both seed stock and commercial) and reproductive investigations.
- Bull testing services including pre-breeding and pre-sale soundness examinations.
- Comprehensive pregnancy testing services, both manual pregnancy diagnosis and state of the art ultrasound scanning (foetal ageing and sexing).
- Consultancy services with an integrated whole farm approach – including preventative animal health programs, performance analysis and disease investigations.

FOR ALL YOUR BEEF PRODUCTION AND BREEDING NEEDS



Reon Holmes | Todd Landes | Seumas McKillop | Shane Thomson
 David Riordan | Wesley Rohr | Jeremy Lim | Caity Thomson

reception@holbrookvetcentre.com.au | 18 Byng St Holbrook NSW 2644
 P 02 6036 2374 | www.holbrookvetcentre.com.au



FEMALES

LOT 58

SPRYS BUDDYS BONNIE N67 (P) (AI)

DOB: 20/07/2017

Colour: Red Little White

Ident No.: GLSN67

Age in Months: 21

BYLAND GOLD SPEAR (P) RLW

THE GROVE OSCAR A748 (P) (ET) (AI) Red

RED ROSE GOLD SPEAR RUFFIAN (IMP CAN) (P) Roan

THE GROVE TIDE-RIP E667 (P) RLW

RED ROSE GUS ROAN LADY 6J (P) Roan

THE GROVE RAMONA Z445 (P) Roan

Sire: SPRYS PRIMROSE'S BUDDY J17 (P) (ET) (AI) Roan

Dam: SPRYS TIDE RIPS BONNIE H84 (P) (AI) Red

THE GROVE KASPROWICZ W791 (P) Red

EVILO XENON X17 (P) Roan

THE GROVE PRIMROSE A742 (P) (ET) (AI) Red

EVILO XENONS BONNIE B65 (P) Roan

THE GROVE PRIMROSE R202 (P) Red

EVILO LEDGERS BONNIE Z31 (P) (AI) Roan

February 2019 Shorthorn GROUP BREEDPLAN

	Calving Ease DIR (%)	Calving Ease DTRS (%)	Gestation Length (days)	Birth Wt. (kg)	200 Day Wt. (kg)	400 Day Wt. (kg)	600 Day Wt. (kg)	Mat. Cow Wt. (kg)	Milk (kg)	Scrotal Size (cm)	Days to Calving (days)	Carcase Wt. (kg)	Eye Muscle Area (sq.cm)	Rib Fat (mm)	Rump Fat (mm)	Retail Beef Yield (%)	IMF (%)	Dom. Mat. Index (\$)	Export Mat. Index (\$)	Nth Mat. Index (\$)
EBV	+6.3	+1.3	-1.4	+2.6	+26	+36	+47	+40	+7	+1.5	-0.1	+39	+6.9	-0.4	-0.7	+2.1	+0.5	+\$39	+\$45	+\$47
ACC	43%	36%	71%	73%	68%	71%	67%	59%	41%	55%	41%	56%	60%	66%	66%	58%	51%			

Traits Observed: GL, CE, BWT, 200WT, 400WT, MWT, FAT, EMA, IMF

Top 5% for EMA & RBV. Top 15% for Calving Ease direct & Milk. Top 20% for Carcase wt & Export Maternal Index.

Sells PTIC - AI 26/9/18 to Futurity Knight K126.

Cover Bull - Southcote Index M12 - In 29/9/18 out 9/11/18, due from 3/7/19.

Bonnie N67 is certainly one of the pick of 2017 drop heifers. She has tremendous balance with great spring of rib in an eye appealing package. (Structurally very sound). We consider Bonnie N67 to certainly be a Donor prospect for the lucky purchaser. The Buddy J17 daughters are proving to be excellent mums. (Just ask Ken Tippett). Would also make an awesome show cow with a calf at foot.



LOT 58

Purchaser: \$

LOT 59

SPRYS R.B. QUEEN N106 (P)

DOB: 20/08/2017

Colour: Red Little White

Ident No.: GLSN106

Age in Months: 20

MARELLAN INDESTRUCTABLE (P) Roan

FUTURITY OUTBACK W1 (P) (ET) (AI) Red

ROYALLA OSTENTATIOUS G404 (P) Roan

SPRY'S JUST RIGHT Z077 (P) (AI) Red

MARELLAN REDWING J6065 (P) Roan

COONARDOO 964 (P) (SFA) Red

Sire: ROYALLA REMBRANDT K413 (P) Roan

Dam: SPRYS J.R MAY QUEEN F45 (P) Red

WEEBOLLABOLLA THEODORE T85 (P) Roan

TREVINO ULTIMATE 2ND (P) Red

MARELLAN DORA 8074L (P) (ET) Red

NEEARRA MAY QUEEN C24 (P) (AI) Roan

INVERARY DORA W184 (P) Red

NEEARRA MAY QUEEN 15 (P) Roan

February 2019 Shorthorn GROUP BREEDPLAN

	Calving Ease DIR (%)	Calving Ease DTRS (%)	Gestation Length (days)	Birth Wt. (kg)	200 Day Wt. (kg)	400 Day Wt. (kg)	600 Day Wt. (kg)	Mat. Cow Wt. (kg)	Milk (kg)	Scrotal Size (cm)	Days to Calving (days)	Carcase Wt. (kg)	Eye Muscle Area (sq.cm)	Rib Fat (mm)	Rump Fat (mm)	Retail Beef Yield (%)	IMF (%)	Dom. Mat. Index (\$)	Export Mat. Index (\$)	Nth Mat. Index (\$)
EBV	+7.4	+5.1	-2.8	+1.7	+30	+40	+55	+39	+6	+2.3	-5.2	+39	+5.2	-0.6	-1.4	+1.7	+0.1	+\$48	+\$46	+\$59
ACC	40%	32%	49%	73%	67%	69%	64%	56%	38%	53%	38%	53%	57%	64%	64%	56%	49%			

Traits Observed: CE, BWT, 200WT, 400WT, FAT, EMA, IMF

Top 10% for Domestic, Nthn Maternal Index, Calving Ease direct, Scrotal Size & Days to calving.

Top 15% for Export Maternal, Calving Ease daughters & RBV.

Top 20% for BW.

Sells PTIC - AI 26/9/18 to Sprys Mortal M40 (sold for \$25,000 in 2018 sale).

Cover Bull - Southcote Index M12 - In 29/9/18 out 9/11/18, due from 3/7/19.

A dark red Rembrandt K413 heifer who has tremendous length of body and great front end. Really like this great set of balanced EBV's. The Rembrandt daughters are looking very impressive just like his mum. N106's Dam has been a very consistant breeder in the Sprys herd and is still going well.

Purchaser: \$



FROZEN EMBRYO'S

LOT 60 SELLING 4 FROZEN EMBRYOS

Embryo's sell on a per Embryo basis. Guarantee a minimum of 50% conception rate guarantee by using an approved Embryologist (must be approved by Gerald). Embryo's point of delivery is Holbrook Vet. Centre. (Reon Holmes 0428 694 787).

DONOR: SPRYS BALANCES PATENT J76 X SIRE: SPRYS BOOM TIME M222

DONOR: SPRYS BALANCES PATENT J76 (P)

DOB: 26/06/2013

Colour: Red

Ident No.: GLSJ76

COOLONG XSS574 (P) (SFA) RLW

WAUKARU GOLD CARD 5042 (IMP USA) (P) Red

GLENELL IMF B90 (P) Red

WAUKARU PATENT 8161 (IMP USA) (P) (ET) Red

GLENELL X154 (P) (SFA)

WAUKARU 12H MELITA ROSE 5021 (H) Red

Sire: OUTBACK SPRYS BALANCE G266 (P) (ET) (AI) Red

Dam: SPRYS PATENTS ANNIE G118 (P) (ET) (AI) Red

SPRYS RED URANUS V112 (H) (AI) Red

EDEN PARK STOCKMAN (P) (AI) Red

SCHULLER RED KATE C1 (P) (TWIN) (AI) Red

SCHULLER ANN B47 (P) Red

SPRYS LEGENDS KATE Y031 (P) (ET) (AI) Red

CHADWICK R127 (H) (SFA) Roan

February 2019 Shorthorn GROUP BREEDPLAN

	Calving Ease DIR (%)	Calving Ease DTRS (%)	Gestation Length (days)	Birth Wt. (kg)	200 Day Wt. (kg)	400 Day Wt. (kg)	600 Day Wt. (kg)	Mat. Cow Wt. (kg)	Milk (kg)	Scrotal Size (cm)	Days to Calving (days)	Carcase Wt. (kg)	Eye Muscle Area (sq.cm)	Rib Fat (mm)	Rump Fat (mm)	Retail Beef Yield (%)	IMF (%)	Dom. Mat. Index (\$)	Export Mat. Index (\$)	Nth Mat. Index (\$)
EBV	0.0	+6.5	-0.1	+2.8	+37	+58	+72	+50	+8	+1.1	-0.4	+44	+5.6	+0.7	+1.1	+0.9	+0.7	+\$50	+\$48	+\$63
ACC	53%	45%	58%	73%	72%	71%	76%	63%	53%	61%	45%	61%	63%	67%	67%	61%	55%			

Traits Observed: CE, 200WT, 600WT, FAT, EMA, IMF

SIRE: SPRYS BOOM TIME M222 (P) (ET) (AI)

DOB: 07/08/2016

Colour: Red

Ident No.: GLSM222

SASKVALLEY ROUGHNECK 154R (P) Red

WAUKARU PATENT 8161 (IMP USA) (P) (ET) Red

SASKVALLEY TRADITION 106T (P) Red

SPRYS PATENT G60 (P) (AI) Red

SASKVALLEY MYRTLE 83N (P) Roan

LONE PINE BALM C050 (P) RLW

Sire: MURIDALE THERMAL ENERGY 15A (P) Red

Dam: SPRYS PATENTS CHERRY J90 (P) Roan

SASKVALLEY BONANZA 219M (P) Roan

JR LEGEND 78H (IMP USA) (P) Red

MURIDALE GOOSE 32R (P) Roan

SPRYS LEGENDS CHERRY G141 (P) (AI) Roan

MURIDALE SWAN 54N (P) White

LONE PINE CHERRY A064 (P) Roan

February 2019 Shorthorn GROUP BREEDPLAN

	Calving Ease DIR (%)	Calving Ease DTRS (%)	Gestation Length (days)	Birth Wt. (kg)	200 Day Wt. (kg)	400 Day Wt. (kg)	600 Day Wt. (kg)	Mat. Cow Wt. (kg)	Milk (kg)	Scrotal Size (cm)	Days to Calving (days)	Carcase Wt. (kg)	Eye Muscle Area (sq.cm)	Rib Fat (mm)	Rump Fat (mm)	Retail Beef Yield (%)	IMF (%)	Dom. Mat. Index (\$)	Export Mat. Index (\$)	Nth Mat. Index (\$)
EBV	+3.8	+0.4	-2.6	+2.2	+28	+41	+45	+31	+6	+1.9	-3.1	+34	+4.0	+1.3	+2.5	0.0	+0.9	+\$45	+\$42	+\$49
ACC	36%	25%	52%	70%	65%	67%	62%	52%	27%	66%	37%	47%	52%	59%	59%	52%	42%			

Traits Observed: BWT, 200WT, 400WT, SS, FAT, EMA, IMF

Boom Time M222 was top price bull in our 2018 sale sold to Dromore Station. He has been used heavily in Sprys and Outback herds. See details page 45.

J76 is an eye catching Donor with great phenotype and outstanding data. The combination of Boom Time with J76 should make outstanding progeny. Dam of Lot 4, guaranteed all Polled calves.

Donor:

Top 1% for 400 day wt. Top 5% for Calving Ease daughters, 200 & 600 day wt & Milk. Top 10% for Rib fat. Top 15% for Carcase wt, EMA, Rump fat & IMF.

Estimated EBV's for calves

	Calving Ease DIR (%)	Calving Ease DTRS (%)	Gestation Length (days)	Birth Wt. (kg)	200 Day Wt. (kg)	400 Day Wt. (kg)	600 Day Wt. (kg)	Mat. Cow Wt. (kg)	Milk (kg)	Scrotal Size (cm)	Days to Calving (days)	Carcase Wt. (kg)	Eye Muscle Area (sq.cm)	Rib Fat (mm)	Rump Fat (mm)	Retail Beef Yield (%)	IMF (%)	Dom. Mat. Index (\$)	Export Mat. Index (\$)	Nth Mat. Index (\$)
Expected Average Progeny Value	+1.9	+3.5	-1.4	+2.5	+33	+50	+59	+41	+7	+1.5	-1.8	+39	+4.8	+1.0	+1.8	+0.5	+0.8	+\$48	+\$45	+\$56

Purchaser: \$

FROZEN EMBRYO'S

LOT 61 SELLING 3 FROZEN EMBRYOS

Embryo's sell on a per Embryo basis. Guaranteed Polled calves.
Embryo's point of delivery is Holbrook Vet. Centre. (Reon Holmes 0428 694 787).

DONOR: SPRYS BALANCES PATENT J76 X SIRE: MURIDALE THERMAL ENERGY 15A

DONOR: SPRYS BALANCES PATENT J76 (P)

DOB: 26/06/2013

Colour: Red

Ident No.: GLSJ76

COOLONG XSS574 (P) (SFA) RLW

WAUKARU GOLD CARD 5042 (IMP USA) (P) Red

GLENELL IMF B90 (P) Red

WAUKARU PATENT 8161 (IMP USA) (P) (ET) Red

GLENELL X154 (P) (SFA)

WAUKARU 12H MELITA ROSE 5021 (H) Red

Sire: **OUTBACK SPRYS BALANCE G266 (P) (ET) (AI) Red**

Dam: **SPRYS PATENTS ANNIE G118 (P) (ET) (AI) Red**

SPRYS RED URANUS V112 (H) (AI) Red

EDEN PARK STOCKMAN (P) (AI) Red

SCHULLER RED KATE C1 (P) (TWIN) (AI) Red

SCHULLER ANN B47 (P) Red

SPRYS LEGENDS KATE Y031 (P) (ET) (AI) Red

CHADWICK R127 (H) (SFA) Roan

February 2019 Shorthorn GROUP BREEDPLAN

	Calving Ease DIR (%)	Calving Ease DTRS (%)	Gestation Length (days)	Birth Wt. (kg)	200 Day Wt. (kg)	400 Day Wt. (kg)	600 Day Wt. (kg)	Mat. Cow Wt. (kg)	Milk (kg)	Scrotal Size (cm)	Days to Calving (days)	Carcass Wt. (kg)	Eye Muscle Area (sq.cm)	Rib Fat (mm)	Rump Fat (mm)	Retail Beef Yield (%)	IMF (%)	Dom. Mat. Index (\$)	Export Mat. Index (\$)	Nth Mat. Index (\$)
EBV	0.0	+6.5	-0.1	+2.8	+37	+58	+72	+50	+8	+1.1	-0.4	+44	+5.6	+0.7	+1.1	+0.9	+0.7	+\$50	+\$48	+\$63
ACC	53%	45%	58%	73%	72%	71%	76%	63%	53%	61%	45%	61%	63%	67%	67%	61%	55%			

Traits Observed: CE, 200WT, 600WT, FAT, EMA, IMF

SIRE: MURIDALE THERMAL ENERGY 15A (P)

DOB: 27/03/2013

Colour: Red

Ident No.: MCAN477341

SASKVALLEY ULTRA 12J (P) Roan

SASKVALLEY ULTRA 12J (P) Roan

SASKVALLEY ROUGHNECK 154R (P) Red

SASKVALLEY BONANZA 219M (P) Roan

SASKVALLEY RAGGEDY ANN 57H (P) RLW

SASKVALLEY BRENDA 218K (P) Roan

Sire: **SASKVALLEY TRADITION 106T (P) Red**

Dam: **MURIDALE GOOSE 32R (P) Roan**

SASKVALLEY ULTRA 12J (P) Roan

MURIDALE BUSTER 14K (P) Roan

SASKVALLEY MYRTLE 83N (P) Roan

MURIDALE SWAN 54N (P) White

SASKVALLEY MYRTLE 174D (P) Red

MURIDALE DARLIN 64K (P) Roan

February 2019 Shorthorn GROUP BREEDPLAN

	Calving Ease DIR (%)	Calving Ease DTRS (%)	Gestation Length (days)	Birth Wt. (kg)	200 Day Wt. (kg)	400 Day Wt. (kg)	600 Day Wt. (kg)	Mat. Cow Wt. (kg)	Milk (kg)	Scrotal Size (cm)	Days to Calving (days)	Carcass Wt. (kg)	Eye Muscle Area (sq.cm)	Rib Fat (mm)	Rump Fat (mm)	Retail Beef Yield (%)	IMF (%)	Dom. Mat. Index (\$)	Export Mat. Index (\$)	Nth Mat. Index (\$)
EBV	+6.3	+3.0	-3.7	+1.5	+26	+33	+28	+25	-	+1.3	-2.0	+30	+4.7	+1.7	+3.0	-0.4	+0.8	+\$42	+\$37	+\$42
ACC	52%	32%	85%	89%	82%	84%	77%	60%	-	805	46%	58%	65%	68%	68%	60%	53%			

Traits Observed:

This is the first Thermal Energy 15A Frozen Embryo's to be sold at Auction in Australia. (Refer to Reference Sires).

This is a great opportunity to get one hell of a joining. This will be a great investment for your herd.

Estimated EBV's for calves

	Calving Ease DIR (%)	Calving Ease DTRS (%)	Gestation Length (days)	Birth Wt. (kg)	200 Day Wt. (kg)	400 Day Wt. (kg)	600 Day Wt. (kg)	Mat. Cow Wt. (kg)	Milk (kg)	Scrotal Size (cm)	Days to Calving (days)	Carcass Wt. (kg)	Eye Muscle Area (sq.cm)	Rib Fat (mm)	Rump Fat (mm)	Retail Beef Yield (%)	IMF (%)	Dom. Mat. Index (\$)	Export Mat. Index (\$)	Nth Mat. Index (\$)
Expected Average Progeny Value	+3.2	+4.8	-1.9	+2.2	+32	+46	+50	+38	-	+1.2	-1.2	+37	+5.2	+1.2	+2.0	+0.3	+0.8	+\$46	+\$43	+\$53

Purchaser: \$



SPRYS BOOM TIME M222 (P)

Sprys Boom Time M222 (P) was top priced bull in our 2008 sale selling for \$36,000 to Dromore Station.

He has developed into one hell of a Sire. Super temperament, tested Homozygous polled, great feet and legs, slick coated, extremely thick and deep bodied and most of all excellent structure and good data and he weighs like lead.

Semen available.



February 2019 Shorthorn GROUP BREEDPLAN

	Calving Ease DIR (%)	Calving Ease DTRS (%)	Gestation Length (days)	Birth Wt. (kg)	200 Day Wt. (kg)	400 Day Wt. (kg)	600 Day Wt. (kg)	Mat. Cow Wt. (kg)	Milk (kg)	Scrotal Size (cm)	Days to Calving (days)	Carcase Wt. (kg)	Eye Muscle Area (sq.cm)	Rib Fat (mm)	Rump Fat (mm)	Retail Beef Yield (%)	IMF (%)
EBV	+3.8	+0.4	-2.6	+2.2	+28	+41	+45	+31	+6	+1.9	-3.1	+34	+4.0	+1.3	+2.5	0.0	+0.9
ACC	36%	25%	52%	70%	65%	67%	62%	52%	27%	66%	37%	47%	52%	59%	59%	52%	42%

Traits Observed: BWT, 200WT, 400WT, SS, FAT, EMA, IMF

Market Target	Index Value
Domestic Maternal Index (\$)	+\$45
Export Maternal Index (\$)	+\$42
Northern Maternal Index (\$)	+\$49

COMPANION REPRODUCTION PRODUCTION



Arrival

Upon arrival ensure your new bulls socialize with a group of animals, (anything except other bulls in the yards, when they arrive).

Run the new bull with a small group of empty females, (he has come from a different herd and may not have had exposure to some of the normal pathogens present in your herd). This must be done, only two new bull at a time, with the empty females, for a period of 2 to 4 weeks. Ideally give the cows prostaglandin every 2 weeks so they can continue to cycle.

Pre Joining

We recommend a breeding soundness examination (BSE), including structural assessment, testicular palpation and (ideally) a service ability test. This is mandatory for second joining and older bull each year. It will improve the fertility performance of the herd, by removing non-working bull out with the cows. If bull(s) are not service tested it is essential you observe the bull serve in the first week of joining.

Keep vaccinations up to date, vibrovax, pestivirus and leptospirosis 7 in 1 and an annual drench, 4-6 weeks prior to joining.

Joining

New bull(s) have the highest risk of breakdown in the herd, this risk can be reduced by:

- Protect a new bull by not overjoining, 40 females per bull maximum.
- It is recommended, if single sire joining with a new bull, to rotate him with a proven bull for at least once cycle. Also, it is good practice to rotate proven bull(s) for the last cycle with all new bull(s).
- Recommend that all females are joined in groups with 2 bulls.

'Most new bull fertility issues develop during the joining period, rather than being pre-existing problems, this means that bull surveillance during the joining period is essential.'

Once the joining is set up, monitoring is essential to identify issues as they develop.

Your new bulls need to be run in mobs that are easily monitored, check them 2 to 3 times a week for the first three weeks and then weekly thereafter. This includes looking for:

- The bull serving, (this has not been successful until the bull thrusts). If a bull is continually mounting without serving it is often a sign the bull has developed a penile infection and needs to be rested and replaced immediately.
- Lameness
- Evidence of penile or prepuce swelling or inflammation
- Signs of ill health, lethargy, etc
- Numbers of females cycling, (for every 21 females, once cycles each day at the commencement of joining). After three weeks of joining, there should be one cow cycling every three days per 21 females if the bulls are working satisfactory.

Post Joining

Bulls need to be removed from the cows, at the same time, to create their new mobs. This will limit the amount of potential injuries by reducing the number of bull interactions.

Bull paddock management is very important to minimize injury between joining's. The bulls need enough room to reduce fighting, restricted feed and water will increase interaction.

The target between joining's is to restrict weight gain in older bulls to prevent breakdowns. Ideally young bulls have access to a higher level of nutrition as they continue to grow.

Early pregnancy testing is essential for good female management and detection of surprises. The earlier the pregnancy testing is undertaken, the more likely the cause of the problem will be identified. This will not only give you early notice of the problem but also help in formulating a plan to help reduce the chance of the problem occurring in the future.





BUYER'S INSTRUCTION SLIP

To be handed in to the Settling Office immediately after the sale (by all purchasers).

PURCHASER DETAILS

Purchaser Name:

Trading Name:

Address:

Phone Numbers: B/H A/H Mobile

Email Address:

Manager / Stockman Phone No.:

Property Identification Code (PIC, must be provided on sale day)

DELIVERY DETAILS

Lots Purchased:

Insure for: (period) Amount:

ACCOUNT DETAILS

Signature:

If you elect to settle through an Agent who has nominated you, the Agent must sign below. **This applies to ALL AGENTS.**

Agent.....Signature.....

Date: 24th April, 2019

STUD REGISTRATIONS

Do you wish to have the Shorthorn Beef Registration transferred into your name? Please tick the box and if yes give your membership number.

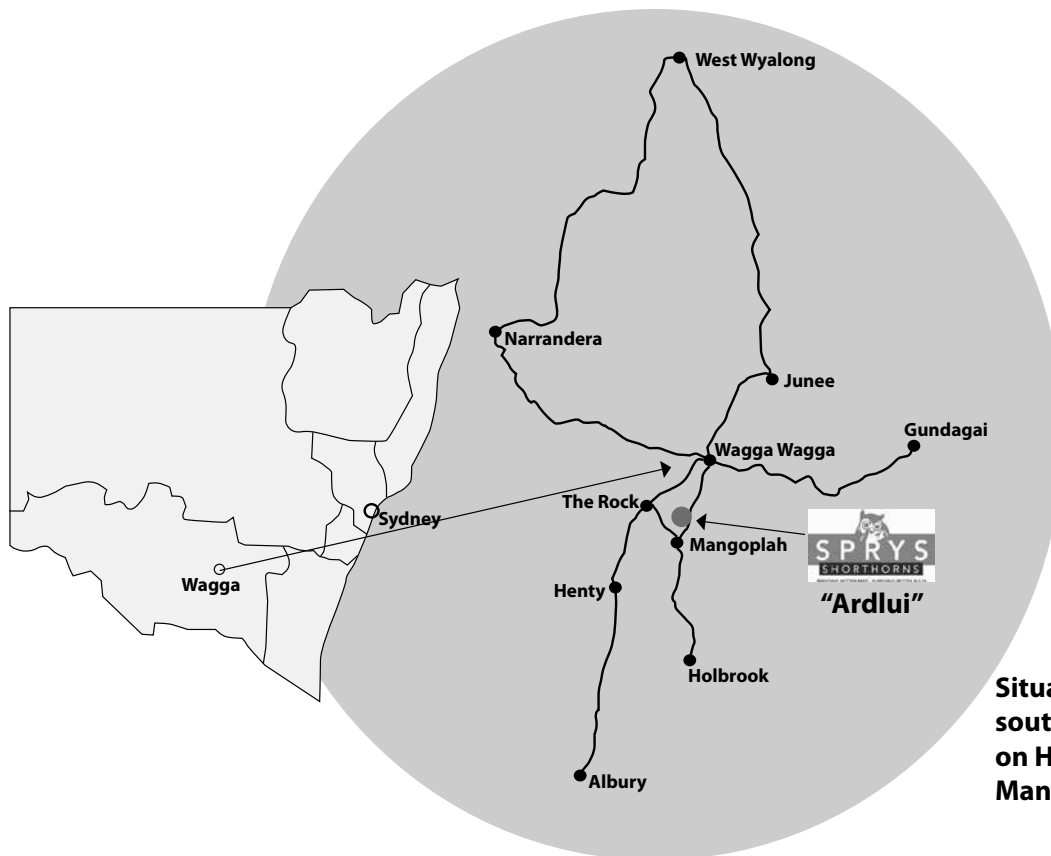
Yes No

(Member Number)

EXTRA DELIVERY DETAILS INCLUDING DIRECTIONS IF REQUIRED

.....
.....
.....

HOW TO GET TO SPRY'S



Situated 23km south of Wagga on Holbrook - Mangoplah Road.

SPRY'S SHORTHORNS

Use and Recommends



NORTH EAST GENETICS

SPECIALISTS IN:

- Semen Sales (access to all breeds)
- Synchronised AI Programs
- Freeze Branding
- Vast Experience with Sexed Semen

www.northeastgenetics.com.au

Contact Details:

Jonathon Thomas

0417 389 260

jt@northeastgenetics.com.au

Brett Wright

0428 253 214

brett@northeastgenetics.com.au

Ross Scammell

0408 591 508

ross@northeastgenetics.com.au

Scott Alcock (NSW South Coast)

0418 109 269

scott@northeastgenetics.com.au



