

**DROUGHT BUSTER**

**GLENLEA BEEF**

# CHAROLAIS FEMALE SALE

1pm - Thursday 18 April 2019 - via AUCTIONS PLUS



**115  
LOTS**

Lot 47 GOLD STAR LOT GLENLEA CHAROL 72nd (P)

- 24 Spring Calvers with BIG Spring Calves (rejoined)
  - 38 Autumn Cows with calves at foot
- 14 Show Prospect Heifers ▪ 8 Flushes ▪ 31 Joined Females

**OPEN WEEKEND FOR INSPECTION: 13th & 14th April, 10am to 4pm**

128 Friday Creek Road, Upper Orara (15 Mins from Coffs Harbour)

## CONTACT US:

Stud Principal  
Roderick Binny 0409 911 791  
rbinny@australiangrassfedmeats.com

Pinedock Fitting  
James Dockrill 0400 387 116

Elders  
QLD Blake Munro 0428 862 469  
NSW Brian Kennedy 0427 844 047

**VIEW VIDEOS OF ALL LOTS AT [WWW.GLENLEABEEF.COM.AU](http://WWW.GLENLEABEEF.COM.AU)**



## Welcome to our "DROUGHT BUSTER FEMALE SALE"

We have decided to go ahead of a full breaking of the drought to give all our seedstock clients old and new the opportunity to get ahead of the market and make great value purchases of these outstanding stud charolais females. And with our DROUGHT BUSTER SALE OFFERS we are making it much easier for you to purchase at the sale. GLENLEA is celebrating 47 continuous years in Charolais Seedstock Production in 2019.

**This sale incorporates the COMPLETE DISPERSAL OF THE ORARA WATERFALL PUREBRED HERD.** The Waterfall Herd was established in 2014 with the purchase of a sizable quantity of females from the GLENLEA and JACKSON Herds. Many other females were added with the purchase of the complete "GOODVIEW" herd and several others from sales and privately in 2014. I have been closely involved with the development of the herd ever since. In early 2018 I took over direct management and part ownership and recently the owners have had a change in family circumstances and we mutually decided to have this sale and disperse the herd.

All of the sale females will be available for inspection on property "Waterfall" 128F, Friday's Creek Road, Upper Orara, 15 min west of Coffs Harbour. On our open weekend 13th and 14th of April between 10am and 4pm. Or by appointment anytime by calling Roderick Binny.

In many of the females GLENLEA has a part registration ownership and a number of calves at foot are either jointly registered with Waterfall and GLENLEA prefix, or GLENLEA alone. GLENLEA has retained all spring 2017 and autumn 2018 bulls to add to our bull sales in 2019 and into next year. The basis of this herd was nearly all the replacement heifers from both the GLENLEA and JACKSON herds in 2014, many of the elite females in this sale are progeny of those females or the original females themselves.

A special feature is the 8 E.T. Flushes in GLENLEA's current donors. GLENLEA has evolved into a much broader business and now has JV programs with a number of herds totaling over 500 stud Charolais females, across a wide geographical area including Victoria and QLD, and other areas of NSW. These are in addition to our own females which we run on several properties in the Coffs Harbour and Dorrigo areas.

Full details of our Sale Special Offers are included on the cover page in each section of the catalogue. Key Points are:

- All Lots eligible for terms payment. 50% of sale price paid to Elders under their normal sale terms, balance direct to GLENLEA in 6 months, No interest, TAP. This must be arranged prior to sale day with myself Roderick Binny. A simple phone call will be enough for any existing stud client.
- Exclusive A.I. offer on show Prospect heifers with agistment included.
- Offer to A.I. all the Autumn calving cows with agistment included.
- Agistment available for all cows, heifers and weaned calves.

We and many other's forecast that the 2020's will be the most exciting and prosperous in Australia's livestock industry since the post war era of the 50's and 60's and we are planning to have a positive and significant role through that time in the area of Charolais Seed stock production.

We welcome you to join our growing team and look forward to assisting you with your purchases, helping you develop your program, whether it be ultra sound scanning your next drop of heifers or bulls, assistance with marketing your cattle, advising on sire selection and mating choices or in any other way we can.

Regards Roderick Binny



**DROUGHT BUSTER**



# CHAROLAIS FEMALE SALE

**1pm - Thursday 18 April 2019 - via AUCTIONS PLUS**

- **24 Spring Calvers with BIG Spring Calves (rejoined)**
  - **38 Autumn Cows with calves at foot**
    - **14 Show Prospect Heifers**
      - **31 Joined Females**
        - **8 Flushes**

## AUCTIONSPLUS:



Our sale will be interfaced live on AuctionsPlus at 1pm on Thursday 18th of April 2019. Bidders can bid online at their location and the bid is transferred to the auction straight away. Bidding is available only if registered with AuctionsPlus 48 hours prior to the auction. For first time users of AuctionsPlus it is recommended that you register as early as possible to become familiar with how the bidding system works. The AuctionsPlus staff are very helpful and happy to help.

To register go online to [www.aucitonsplus.com.au](http://www.aucitonsplus.com.au). If you need assistance phone (02) 9262 4222.

## INSPECTIONS: OPEN WEEKEND 13 & 14 APRIL

All cattle will be available to inspect on Saturday 13 & Sunday 14 April from 10am to 4pm at 128 Friday Creek Road, Upper Orara - only 15 minutes from Coffs Harbour. (See map on back cover). Alternatively, contact Roderick to arrange an inspection.

## CONTACTS:

Stud Principal  
Roderick Binny P: 0409 911 791  
E: [rbinny@australiangrassfedmeats.com](mailto:rbinny@australiangrassfedmeats.com)

Pinedock Fitting,  
James Dockrill P: 0400 387 116

## AGENTS:



QLD - Blake Munro P: 0428 862 469  
NSW - Brian Kennedy P: 0427 844 047

**VIEW VIDEOS OF ALL LOTS ON OUR WEBSITE:**

**WWW.GLENLEABEEF.COM.AU**

## Conditions of Sale

**All lots will be sold on Auctions Plus Thursday 18th April 2019 starting at 1pm.**

**BIDDING ON AUCTIONS PLUS: WE VERY STRONGLY RECOMMEND THAT IF YOUR INTERNET CONNECTION IS IN ANY WAY UNRELIABLE EVEN JUST A LITTLE TO DRIVE INTO TOWN TO YOUR LOCAL AGENT AS IT WILL LET YOU DOWN AT A CRITICAL LOT, WE HEAR THIS STORY AFTER EVERY ONLINE AUCTION!!**

- **JBAS:** The Glenlea and Waterfall herds are JBAS 7 herds and eligible for entry into all states except WA.
- **Outside agent rebate:** vendors agree to pay 2% Rebate to any agent introducing buyers prior to sale and settling within 7 days for purchases up to \$15,000 total ( multiple lots)per client. 3% for over \$15,000.
- **Supplementary sheet** will be provided before sale and be available from the agents, online with Auctions Plus and at [www.glenleabeef.com.au](http://www.glenleabeef.com.au)
- **Vaccinations:** All cattle will be or have been blooded for entry into ticky areas, show heifers additionally have been 3 day fever vaccinated, all cattle 7 in 1 up to date and Autumn calves have had their 1st shot.
- **Transport:** cattle can be held for up to 14 days, until economical arrangements can be made if not taking advantage of our agistment offer. We will assist in helping arranging this in any way we can. Our network allows us to move cattle long distances economically. After 14 days some costs may apply.
- **Insurance:** we recommend that you insure all your Lots as we take all due care but no responsibility in managing the cattle. Cattle remaining at "Waterfall" to take advantage of our sale offers **MUST BE INSURED. ANY CATTLE SOLD WITH OUR TERMS OFFER FOR PAYMENT MUST BE INSURED.**
- **Terms payment:** security will be in the form of a PPSR over the nlis tag and Tatoo of the animal, this is simply registered with the NLIS data base, a common procedure. Any cost of this will be at GLENLEA's expense. No registration transfers with the Charolais Society will be completed until full payment made.
- **Agistment /A.I offer costs** will be invoiced and will to be settled prior to delivery of stock.
- **Videos:** Most lots have a video and be will playing during the auction when that lot is being sold and all available videos can be viewed online at [www.glenleabeef.com.au](http://www.glenleabeef.com.au)
- **Accuracy of catalogue and supplementary sheet:** every effort is made to be as accurate as possible, however mistakes can happen in the construction and printing of sale catalogues/supplementary and we will endeavor to resolve any issues but make no warranty.
- **Guarentee:** all joining age females are sold as fertile breeders, calves at foot are excluded both heifers and bulls from any guarantee. If there is an issue with a breeding age female we will simply work out a solution with the purchaser that is satisfactory to all parties, we stand behind our cattle and just fix a problem if and when it occurs simply and easily.

**GOLD START LOTS:** We have modelled this on the ranking of DAM's in the American system. Cows that wean calves above the herd average, calve a regular intervals, consistently produce high value progeny and are identified as females that have higher genetic merit, through their performance including Genomics and their dam's and sisters production record. This label has been reserved for only the elite, many females in this catalogue could be rated as a Gold star lot and different people with different markets and environments would rate them differently. However we feel that the individuals we have given a gold star rating too, would be by most judges.



**GOLD  
STAR  
LOT**



**Can't make the sale?**  
**Register in just seven easy steps and log onto AuctionsPlus to bid from anywhere on your phone, tablet or desktop.**

1

#### **REGISTER ONLINE**

FREE once off registration for all auctions.

2

#### **COMPLETE BUYER INDUCTION**

The buyer induction will help you understand the roles and responsibilities of everyone on the AuctionsPlus system.

3

#### **VIEW CATALOGUE**

Stock history, photos, videos, pedigrees and more. You can also favourite lots you are interested in.

4

#### **ENTER AUCTION**

Log into the auction anytime, anywhere and bid on your mobile, tablet or computer. Auctions can end after 30 minutes so get in early.

5

#### **Auto bid**

Can't stay for the whole sale? Set your maximum bid on the lot that you want to purchase and let the computer bid for you.

6

#### **CONTACT SELLER**

If successful, contact selling agent to arrange payment and delivery. Or if you are the highest bidder you can log into your dashboard to meet the reserve.

7

#### **PAYMENT**

Via the selling agent's terms and conditions.

8

#### **DELIVERY**

Arrange transport of livestock at your expense

*Contact AuctionsPlus on (02) 9262 4222  
or [www.auctionsplus.com.au](http://www.auctionsplus.com.au)*

## REFERENCE SIRE

## GLENLEA HONOURABLE (AI) (ET) (P) (R/F)

**TATTOO:** VLW H25E

**DOB:** 20/09/2012

**COMMENTS:**

This bull is an impact sire, semen interests sold to several prominent QLD studs.

Progeny are in great demand for that elusive combination of thickness, growth and softness with a polled head! All Growth EBV's top 1% of the breed.

Semen no longer available except for E.T. programs. POA



HARVIE REDEMPTION 36P MC286641 (OAC Z6641E) (P)

FERNVALE RIPPER (FEN R1E)

**SIRE: RANGAN PARK REDEMPTION E42 (RAN E42E) (P)**

**DAM: FERNVALE CHIFFON (FEN C22E)**

RANGAN PARK SHOWGIRL C7 (RAN C7E)

FERNVALE PRIMADONNA (FEN P28E)



### March 2019 Australasian Charolais BREEDPLAN Analysis

	CE Dir	GL	BW	200	400	600	MCW	Milk	SS	Carc Wt	EMA	Rump	RBY	IMF
EBV	-16.4	-0.4	3.1	24	43	65	71	6	1	33	2.5	1.1	0.2	0.4
Acc	65%	72%	84%	67%	68%	69%	65%	56%	55%	57%	45%	50%	48%	44%

## REFERENCE SIRE

## GLENLEA HILTON (AI) (P)

**TATTOO:** GLE H30E

**DOB:** 31/08/2012

**COMMENTS:**

Another impact sire that has left his mark in several herds and will continue to through sons and his many daughters. Still top 1% growth but with more moderate BW, coming from his dam. Some of our best progeny are coming out of HILTON daughters, the strength of his dam from the CHAROL cow family at GLENLEA coming through the generations.

Semen not available



HARVIE REDEMPTION 36P MC286641 (OAC Z6641E) (P)

GLENLEA PERFECTION (GLE P41E)

**SIRE: RANGAN PARK REDEMPTION E42 (RAN E42E) (P)**

**DAM: GLENLEA CAAROL X11E (GLE X11E)**

RANGAN PARK SHOWGIRL C7 (RAN C7E)

GLENLEA CAAROL V9E (GLE V9E)



### March 2019 Australasian Charolais BREEDPLAN Analysis

	CE Dir	GL	BW	200	400	600	MCW	Milk	SS	Carc Wt	EMA	Rump	RBY	IMF
EBV	-2.2	-0.3	0.8	17	41	61	65	14	1.2	35	1.5	0.4	-0.2	0.6
Acc	60%	74%	82%	66%	67%	71%	66%	56%	73%	58%	51%	54%	53%	46%

## REFERENCE SIRE

## CHARNELLE LOUIS (AI) (ET) (P)

**TATTOO:** GKA L73E

**DOB:** 26/12/2015

**COMMENTS:**

Another impact sire, pure French Polled Sire and Dam a fully imported embryo from the USA. Total outcross genetics for Australian Bloodlines. Plenty of growth and extra carcass value his carcass data will be impressive once enough progeny data have been submitted to Breedplan as basically no relatives in the Australian herdbook to give meaningful EBV's currently.

Semen is available. \$50 per straw.



EMILE - RS 8900459227 (PED -9227F)

RC CHARLIE 0327 M672200 (OAU Y2200E) (P)

**SIRE: GALLWAY - RS 8900451063 (OAF G1063F) (P)**

**DAM: CHARNELLE ELLE (GKA E10E) (P)**

DEMLER - RS 8900457103 (PED -7103F)

MS CC JACKPOT 1107M55 F970558 (OAU X558E)

Charolais GROUP BREEDPLAN	March 2019 Australasian Charolais BREEDPLAN Analysis													
	CE Dir	GL	BW	200	400	600	MCW	Milk	SS	Carc Wt	EMA	Rump	RBV	IMF
EBV	-3.7	-2.8	1.1	12	32	34	29	6	1.4	24				
Acc	44%	63%	67%	56%	57%	54%	50%	36%	39%	42%				

## REFERENCE SIRE

## LITTLE VALLEY GRANDIOSE (AI) (P)

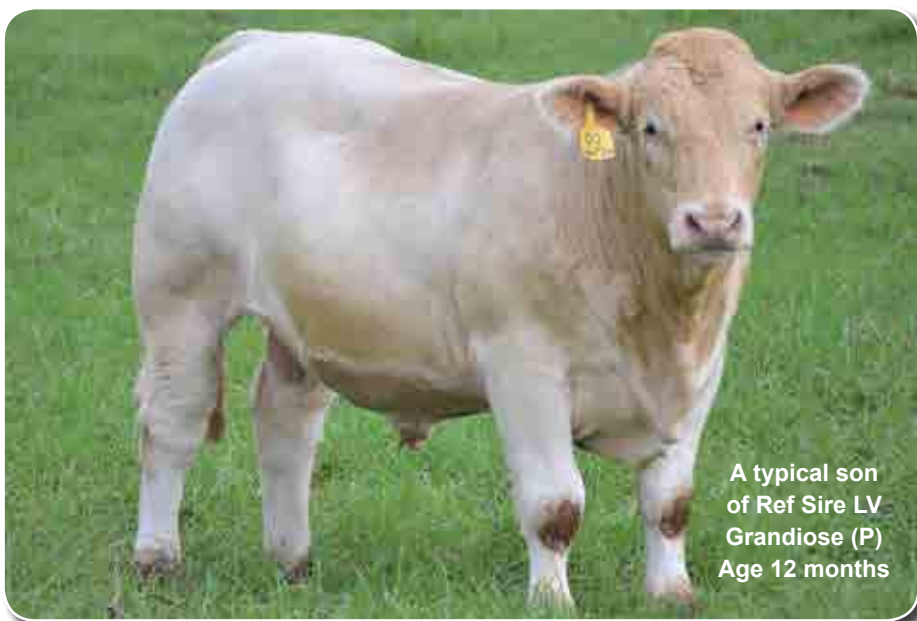
**TATTOO:** GKB G5E

**DOB:** 2/08/2011

**COMMENTS:**

Proven sire. No Comment.

Semen not available



A typical son of Ref Sire LV Grandiose (P) Age 12 months

M6 GRID MAKER 104 PET M633377 (OAU W3377E) (P)

BRYSON YODA (BRI Y4E) (P)

**SIRE: EC NO DOUBT 2022 P M685500 (OAU Z2022E) (P)**

**DAM: LITTLE VALLEY DOLLY (GKB D5E) (P)**

EC LADY DUKE 2022 P F956614 (PED -2022E) (P)

CHESTERFIELD XPLAIN (9MJ X28E) (P)

Charolais GROUP BREEDPLAN	March 2019 Australasian Charolais BREEDPLAN Analysis													
	CE Dir	GL	BW	200	400	600	MCW	Milk	SS	Carc Wt	EMA	Rump	RBV	IMF
EBV	-10.8	-3	1.2	16	30	46	42	9	0.4	27	2.6	1.6	0.2	0.4
Acc	64%	64%	83%	63%	64%	65%	63%	57%	53%	54%	45%	50%	47%	45%

## REFERENCE SIRE

## GLENLEA JEDDI (P)

**TATTOO:** VLW J15E

**DOB:** 13/05/2013

**COMMENTS:**

Added to the WATERFALL Herd in 2016 as for his early maturing growth pattern and impact carcass sire and he has delivered, his sons and daughters have amazing carcass shape and quality.

Semen not available.



Age in photo 2.5 years after a wash on a cold Guyra Winter's day!

LT BLUEGRASS 4017P M686569 (OAU Z4017E) (P)

EXCALIBUR FMC423 M64617 (IAC E6084F)

**SIRE: GLENLEA EDDIE (GLE E14E) (P)**

**DAM: FERVALE BONNY MANDIE (FEN B24E)**

GLENLEA NOLANA 29TH (GLE C15E)

FERVALE MANDIE (FEN M37E)



### March 2019 Australasian Charolais BREEDPLAN Analysis

	CE Dir	GL	BW	200	400	600	MCW	Milk	SS	Carc Wt	EMA	Rump	RBY	IMF
EBV	12.2	-1.7	-0.8	12	24	31	27	9	0.7	26	3.5	-0.4	1.1	0.3
Acc	54%	55%	78%	62%	64%	69%	62%	48%	51%	56%	48%	49%	50%	46%

## REFERENCE SIRE

## GLENLEA BIG GUN (AI) (P) (R/F)

**TATTOO:** GLE B10E

**DOB:** 24/07/2006

**COMMENTS:**

Proven Sire. No comment.

Limited Semen available. \$50 per straw



BLASON 4286100325 286100325 (PED X286F)

GLENLEA MEATBALL (GLE M44E) (P)

**SIRE: ICARE 7193116802 (OAF N7193F)**

**DAM: GLENLEA JANET U6E R/F (GLE U6E) (P)**

DOUCETTE 7188123178 (PED X7188F)

GLENLEA JANET N36E (GLE N36E) (P)



### March 2019 Australasian Charolais BREEDPLAN Analysis

	CE Dir	GL	BW	200	400	600	MCW	Milk	SS	Carc Wt	EMA	Rump	RBY	IMF
EBV	-24.3	-1.4	4.3	23	35	55	75	2	0.9	29	2.2	-1.2	1.6	-0.4
Acc	71%	82%	90%	80%	79%	80%	75%	66%	70%	65%	50%	60%	55%	44%



## REFERENCE SIRE

## ROSEDALE DINGA (P)

**TATTOO:** MR D25E

**DOB:** 15/05/2008

**COMMENTS:**

Proven sire. No comment.

Semen not available



NOVOTEL 5897127519 (OAF S7519F)

FERNVALE TRAPPER (FEN T50E)

**SIRE: PARINGA NOVOTEL A100 (TOL A100E) (P)**

**DAM: ROSEDALE WALLAH Z27 (MR Z27E)**

PARINGA FASTRACK Y654 (TOL Y654E) (P)

ROSEDALE WALLAH Q137 (MR Q137E) (P)



### March 2019 Australasian Charolais BREEDPLAN Analysis

	CE Dir	GL	BW	200	400	600	MCW	Milk	SS	Carc Wt	EMA	Rump	RBY	IMF
EBV	15	-3.3	-2.3	13	23	42	47	16	1.5	27	0.4	-0.1	0.1	-0.4
Acc	68%	79%	85%	74%	73%	77%	72%	63%	65%	65%	56%	61%	59%	56%

## REFERENCE SIRE

## GLENLEA KENWORTH (P)

**TATTOO:** GLE K80E

**DOB:** 1/10/2014

**COMMENTS:**

This bull was sold as a calf and purchased back by GLENLEA in 2017. Low BW, extra carcass merit with loads of softness and early maturity pattern. A Full sister is one of the best RIO daughters for milking ability and was top price female at the 2018 Charnelle Invitational sale, dam was a polled Carabiner daughter and old French Charolais sire from the 1970's noted for carcass traits and low BW.

SEMEN not currently available but could be supplied to order.



LT RIO BRAVO 3181 P M665507 (OAU Y5507E) (P)

CARABINIER 71357 C33 (IAF C6041F)

**SIRE: RANGAN PARK RIO BRAVO D15 (RAN D15E) (P)** **DAM: THW TATT MAC D10E (THW D10E) (P)**

PALGROVE SHOW GIRL 6 (PK P82E) (P)

COORANGA AROHA 9 (MLB X26E) (P)



### March 2019 Australasian Charolais BREEDPLAN Analysis

	CE Dir	GL	BW	200	400	600	MCW	Milk	SS	Carc Wt	EMA	Rump	RBY	IMF
EBV	3.3	-4.5	-0.6	10	22	28	31	10	0.9	17	2.1	1.7	-0.5	1.1
Acc	53%	56%	64%	61%	59%	59%	57%	54%	51%	52%	43%	45%	44%	42%

## REFERENCE SIRE

## BRANCH VIEW FORDGED FROM STEEL (AI) (ET) (P) (R/F)

**TATTOO:** BVC F34E

**DOB:** 13/09/2010

**COMMENTS:**

Proven Sire. No Comment.

Limited Semen available. \$60 per straw



LANG'S ERIC THE RED 3E MC178117 (PED -8117E) (P/S)

HUNTINGTON UMPIRE (WCC U24E)

**SIRE: HARVIE JAGER 65J PMC228759 (OAC U8759E) (P) DAM: BRANCH VIEW XQUISITE Z47E (BVC Z47E)**

HARVIE MISS FRANCIS 47F FC234929 (OAC R4929E)

BRANCH VIEW NURSEMAID (BVC N10E)



### March 2019 Australasian Charolais BREEDPLAN Analysis

	CE Dir	GL	BW	200	400	600	MCW	Milk	SS	Carc Wt	EMA	Rump	RBY	IMF
EBV	6.6	-2.6	-0.4	10	22	26	5	6	1.7	16	1.9	-0.7	0.7	0.3
Acc	67%	80%	86%	78%	75%	75%	70%	71%	67%	63%	45%	51%	49%	44%

## REFERENCE SIRE

## PARINGA HOWLER M344 (P)

**TATTOO:** TOL M344E

**DOB:** 15/02/2016

**COMMENTS:**

An outcross HOMO polled sire whose first calf crop is very impressive, his BW are much lower than expected and his BW EBV will reduce with the submission of all calving data from spring 2018 and Autumn 2019. Extra fat cover, while maintaining bone and growth.

Semen not available.



BRANCH VIEW DYNAMO (BVC D96E) (P)

HARVIE REDEMPTION 36P MC286641 (OAC Z6641E) (P)

**SIRE: BRANCH VIEW HOWLER (BVC H118E) (P) DAM: PARINGA REDEMPTION G437 (TOL G437E) (P)**

BRANCH VIEW A TOUCH OF CLASS E10 (BVC E107E) (P/S)

PARINGA WESTER SPUR D195 (TOL D195E) (P)



### March 2019 Australasian Charolais BREEDPLAN Analysis

	CE Dir	GL	BW	200	400	600	MCW	Milk	SS	Carc Wt	EMA	Rump	RBY	IMF
EBV	-1.5	-1.6	1.5	15	34	44	39	2	1.8	24	0.9	1.8	-0.6	0.6
Acc	37%	48%	67%	61%	63%	59%	55%	42%	72%	52%	47%	50%	50%	46%

## REFERENCE SIRE

## RANGAN PARK RIO BRAVO D15 (AI) (ET) (P)

**TATTOO:** RAN D15E

**DOB:** 6/04/2008

**COMMENTS:**

Proven Sire. No comment.

Semen available \$40 per straw



Age in photo  
3.5 years

LT RIO BLANCO 1234 P M620591 (OAU W591E) (P)

WCR SIR FA MAC 2244 M234430 (OAU B2244E) (P)

**SIRE: LT RIO BRAVO 3181 P M665507 (OAU Y5507E) (P) DAM: PALGROVE SHOW GIRL 6 (PK P82E) (P)**

LT 7N OF DUKE 9083 PLD F852553 (OAU U2553E) (P)

PALGROVE SHOW GIRL 5 (PK L123E)



### March 2019 Australasian Charolais BREEDPLAN Analysis

	CE Dir	GL	BW	200	400	600	MCW	Milk	SS	Carc Wt	EMA	Rump	RBY	IMF
EBV	1.8	-6.4	-0.4	20	41	50	53	14	1.2	32	3.5	2.7	-0.6	1.7
Acc	83%	87%	95%	88%	89%	90%	87%	87%	86%	82%	72%	76%	74%	72%

## REFERENCE SIRE

## CHALLAMBI MUSCLES (AI) (ET) (P)

**TATTOO:** CHA M15E

**DOB:** 22/07/2016

**COMMENTS:**

Very thick moderate framed sire, now proven calving ease to confirm his low BW EBV's with 10 calves average actual BW 37kg all out of heifers no assists. purchased at HUON& CHALAMBI inaugural on property sale in 2017. Top priced bull.

Semen not currently available



LT STAGECOACH 8068 PLD (OAU D7606E) (P)

PALGROVE EXPO (PK E132E) (AI) (ET) (P)

**SIRE: LT VENTURE 3198 (OAU J5612E) (P)**

**DAM: ROSEDALE HIGHNESS G114E (MR G114E) (P)**

LT BALLET 9219 (OAU E7686E) (P)

ROSEDALE HIGHNESS X27 (MR X27E) (AI) (P)



### March 2019 Australasian Charolais BREEDPLAN Analysis

	CE Dir	GL	BW	200	400	600	MCW	Milk	SS	Carc Wt	EMA	Rump	RBY	IMF
EBV	+6.5	-6.1	-2.3	+15	+36	+42	+31	+16	+2.3	+31	+2.4	+1.7	-0.4	+0.3
Acc	48%	56%	61%	56%	57%	56%	50%	45%	52%	48%	40%	49%	44%	40%

## Glenlea Beef Presents:

# 24 SPRING CALVING FEMALES REJOINED

### 11 First calvers, 13 Mixed age cows. All rejoined. Includes 3 sets of twins.

The registration of calves in the Waterfall herd was not consistent, only a few cattle were registered each year. Many cows therefore do not have calves recorded prior to 2017 this does not reflect that they didn't have a calf. For the mature females to still be in the herd they have calved regularly. This applies to both Spring And Autumn calving cows.

These lots represent the cream of the Waterfall Spring calving cows. Any lesser females were sold off last year. The calves at foot by Homozygous sire CHARNELLE LOUIS (P) are a feature of this sale. They are his first drop with several more in the Autumn Calving section. He has exceeded expectations and been so consistent. Several Stud sire prospects and a number of show prospect Heifer calves.

These females include two GOLD STAR females and several more that could have been rated as the same. The GOLD STAR term explained on the "Conditions of Sale" page.

### "DROUGHT BUSTER" SALE OFFERS:

- 50% of sale price paid under normal Elders terms, balance due in 6 months with no interest. TAP (This must be arrange direct with vendor prior to auction.)
- You can take you purchase at anytime or they can stay on the following terms:
  - With these Spring calvers if they are to stay at our Waterfall property on agistment they would be weaned post sale and cows put on grass paddocks at \$7 per week per head for up to 16 weeks, longer by arrangement, with a cost review after 16 weeks.
  - Calves would be supplemented at cost with Production lick (self limiting soybean/cottonseed/barley based lick) in the paddock at cost (approx \$1 per day ) plus \$5 per head per week agistment. If winter fodder crop available \$7 per week per head, no supplement.
  - **Summary for 16 weeks:**
    - Cow \$112 PLUS Calf \$192 approx with supplement OR \$112 if fodder crop available.
    - Total \$242 OR \$304 per unit depending on feeding program. (All prices plus GST.)

### TESTIMONIAL FROM SAM TAYLOR, ALLEDNAW CHAROLAIS, KERANG VIC

*Our family's cattle and business relationship with Roderick and Glenlea extends back to 1983, when Roderick's father the Late Robert Binny purchased a sire from our stud ALLEDNAW ALFRED, an AGA KHAN son.*

*More recently in 2007 we purchased a line of 50 mixed age cows to boost our stud program after years of reducing numbers. Additionally, we purchased more Glenlea females from the National Sales when they were held in Tamworth. These cattle are the basis of our herd now and the Glenlea Bloodline stock sold exceptionally well at our recent Summer Opportunity Female Sale in November 2018 providing a great return on investment.*

*Roderick does all our stud ultra sound scanning and helps us refine our A.I. program so we minimize culls and produce a higher percentage of stud cattle to sell out of our purebred cows, adding to our bottom line, and always keeps his eye out for stud sires to add to our herd in his ongoing travels across the country and Globally in the Charolais world.*

*Roderick's assistance in getting the result we achieved at our recent female sale was invaluable and his experience and knowledge from dealing with Charolais Stud Stock all across the country allows us to focus on our program at home and tap into the information bank that Roderick has built and he share's that with us on a regular basis.*



Denis Taylor, Roderick Binny and Sam Taylor in 2017



View the video of L42 and P33 at [www.glenleabeef.com.au](http://www.glenleabeef.com.au)

RANGAN PARK REDEMPTION E42 (RAN E42E) (P)  
**SIRE: GLENLEA HILTON (GLE H30E) (P)**  
 GLENLEA CAAROL X11E (GLE X11E)

LT BLUEGRASS 4017P M686569 (OAU Z4017E) (P)  
**DAM: VALLEY VIEW NOLANA 52 (VLW H52E) (P)**  
 VALLEY VIEW C009 NOLANA (VLW C9E)



**COMMENTS:** A breeding unit if there ever was one to start the sale. The first of the "Hilton" daughters in this sale, simply an outstanding breeding bull and from the NOLANA cow family with 40 years of history. Dam is also a Gold Star Lot, see explanation of this term in the catalogue in information pages at front of catalogue. Donor cow 100%, justified by her individual performance, pedigree, consistency of cow family, obvious milking ability and most importantly her first calf at foot, stud sire prospect, P33E by Charnelle Louis(P).

I could describe her physical makeup and her bull calf, but video of them really says it all. make sure you view at [www.glenleabeef.com.au](http://www.glenleabeef.com.au) along with videos of 95% of lots in the sale.

Worth detailing from LOT 1 is the management of all these females, no special prep for sale, run on kikuyu based pastures with only a dry lick supplement through the summer when it was exceptionally dry. The calves at foot represent what the cow can do herself. The only exception is the show prospect heifers.

Great spread of EBV's on this cow, with added carcass value top 15% EMA and 600 day weight and the Louis calves are going to have added carcass on top of that with well above average growth figures with positive fat cover. The first round of scan data submitted will confirm this statement, it's clearly evident to the trained eye in his progeny.

Polled Bull Calf at foot GLE P33E by Charnelle Louis (P) born 29/6/18. 75% chance P33 is homozygous polled.

Rejoined to Glenlea Honorable (P) R/F from 22/10/18/18 to 1/2/19 the reason for long joining period is that we combined these early calvers with later calving females into 1 mob so then bull was with them for an extended period.

March 2019 Australasian Charolais BREEDPLAN Analysis												
Charolais	CE Dir	GL	BW	200	400	600	Milk	SS	Carc Wt	EMA	Rump	IMF
EBV	+3.8	-2.0	+0.4	+16	+32	+45	+13	+1.3	+27	+2.1	+0.5	+0.7
Acc	45%	53%	58%	46%	47%	49%	41%	46%	40%	35%	37%	33%



View the video of L44 and P27 at [www.glenleabeef.com.au](http://www.glenleabeef.com.au)



EC NO DOUBT 2022 P M685500 (OAU Z2022E) (P)  
**SIRE: LITTLE VALLEY GRANDIOSE (GKB G5E) (P)**  
 LITTLE VALLEY DOLLY (GKB D5E) (P)  
 CB CANTERBURY (CBL C13E) (P)  
**DAM: PIPECLAY G2E (ROL G2E)**  
 PIPECLAY BOP BOP (ROL B2E)

**COMMENTS:** Outstanding daughter of influential sire "Grandiose" many daughters are in the sale, and all have outstanding udders and ideal teat size and shape, L44 is no exception. The dam of this cow sells at lot 21 with her Louis heifer calf at foot! Big volume, great doing female that has produced a stunning Louis heifer calf as well!

I could describe L44's physical makeup and her first calf a stunning heifer calf P27, but video of them really says it all. we have taken the step of producing video of virtually all lots for this sale to give potential buyers extra confidence in making purchases online. Make sure you view at [www.glenlea beef.com.au](http://www.glenlea beef.com.au) along with videos of most lots in the sale.

L44's EBV's show a very similar story to lot 1 just about ideal spread of high growth, added carcass and in a medium framed early to mid maturity type female, a Donor without doubt and her heifer calf at foot may be even better again!

Polled Heifer calf at foot, by "LOUIS" GLE P27E born 13/6/18. 75% chance P27 is homozygous polled.

Rejoined to Glenlea Honorable (P) R/F from 22/10/18/18 to 1/2/19.

March 2019 Australasian Charolais BREEDPLAN Analysis												
Charolais	CE Dir	GL	BW	200	400	600	Milk	SS	Carc Wt	EMA	Rump	IMF
EBV	-12.3	-1.6	+2.0	+14	+27	+39	+8	+0.3	+22	+1.9	+0.5	+0.4
Acc	41%	41%	67%	44%	44%	47%	34%	31%	34%	26%	29%	26%

**LOT: 3****ORARA WATERFALL BIANCA 1ST (P)****TATTOO: WFA L25E DOB: 08/04/2015**

**COMMENTS:** Another big volume, exceptionally quiet polled "HILTON" daughter, a bull that's left outstanding daughters and sons. Sire prospect or sale topper polled bull calf P31 at foot, sire by Charnelle Louis, her first calf and approaching 400kg. All weights of lots will be available on supplementary sheet prior to sale. Could easily be a donor of the future, tremendous pelvic capacity, broad muzzle and big strong sound feet. L25 dam was a big, fine haired female purchased as part of the entire Goodview Stud based at Guyra, a grand old dam of the herd, and L25 was her last calf. Goodview basically stopped registering cattle from 2009 and so only 3 registered progeny from L25's dam, including L25 and J8 lot 18 in this sale. Make sure you view the video - if a picture says a 1000 word, a video says 10,000! EBV's in that same zone, lower birthweight in L25, good growth and positive carcass, the type of female that could be joined to a variety of sires to suit any market.

View the video of L25 and P31 at [www.glenleabeef.com.au](http://www.glenleabeef.com.au)

RANGAN PARK REDEMPTION E42 (RAN E42E) (P)  
**SIRE: GLENLEA HILTON (GLE H30E) (P)**  
 GLENLEA CAAROL X11E (GLE X11E)  
 ADVANCE VOUCHER (ADV V10E)  
**DAM: GOODVIEW BIANCA (HEL B1E) (P)**  
 GOODVIEW TERRIFIC (HEL T1E) (P)



Polled Bull calf at foot GLE P31E, by "LOUIS" born 27/6/18. 75% chance P31 is homozygous polled.

Rejoined to Glenlea Honorable (P) R/F from 22/10/18/18 to 1/2/19



March 2019 Australasian Charolais BREEDPLAN Analysis

	CE Dir	GL	BW	200	400	600	Milk	SS	Carc Wt	EMA	Rump	IMF
EBV	+5.3	-1.3	-0.9	+10	+23	+32	+10	+0.9	+21	+1.4	+0.2	
Acc	39%	44%	68%	44%	44%	48%	33%	38%	34%	27%	28%	

**LOT: 4****ORARA WATERFALL JOSIE 2ND (P)****TATTOO: WFA L11E DOB: 20/03/2015**

**COMMENTS:** I could almost make the same comments for this Lot as the last. Just an outstanding young cow. Another simply stunning Louis heifer 2.5 months younger than the previous 3 lots. Dam is terrific Gobongo bred female, still producing in a Glenlea Joint venture herd near Grafton NSW. This female judging by her own performance, pedigree and first calf could easily join our donor herd, but as this is a complete dispersal of the Waterfall herd, she is in the sale, only dispersals gives an opportunity like this. Such a gentle female, she is one of Roderick's personal favorites. Her EBV's reflect the type that "Hilton" is breeding, top level growth, with extra carcass with sensible birthweights all in a medium maturity type female. L11 could produce for any market, she could be joined to a French influence power sire to breed high performance sires for the northern markets in Bos Indicus herds or to an early maturing, moderate farmed bull for southern markets producing domestic weight progeny that finish of grass at domestic weights easily.

View the video of L11 and P47 at [www.glenleabeef.com.au](http://www.glenleabeef.com.au)

RANGAN PARK REDEMPTION E42 (RAN E42E) (P)  
**SIRE: GLENLEA HILTON (GLE H30E) (P)**  
 GLENLEA CAAROL X11E (GLE X11E)  
 PALGROVE BOLSTER S WW1547XBA03460 (PK B544E)  
**DAM: GOBONGO JOSIE F34E (GO F34E)**  
 GOBONGO JOSIE Y53E (GO Y53E)



Polled Heifer calf at foot GLE P47E, by "LOUIS" born 7/9/18. 75% chance calf is homozygous polled.

Rejoined to Glenlea Honorable (P) R/F from 22/10/18/18 to 1/2/19



March 2019 Australasian Charolais BREEDPLAN Analysis

	CE Dir	GL	BW	200	400	600	Milk	SS	Carc Wt	EMA	Rump	IMF
EBV	-1.7	-0.3	+1.3	+12	+32	+43	+9	+0.7	+26	+1.9	+0.9	+0.4
Acc	36%	43%	48%	43%	43%	45%	39%	44%	38%	32%	34%	30%

**LOT: 5****ORARA WATERFALL GOLDIE 2ND (P)**

TATTOO: WFA L48E DOB: 02/09/2015

View the video of L48 and P32 at [www.glenleabeef.com.au](http://www.glenleabeef.com.au)

RANGAN PARK RIO BRAVO D15 (RAN D15E) (P)

**SIRE: GLENLEA HI GUY (GLE H52E) (P)**

GLENLEA CAAROL W8E (GLE W8E)

GLENLEA BIG GUN (GLE B10E) (P)

**DAM: JACKSON GOLDIE (MEJ G11E) (P)**

JACKSON BLISS (MEJ B81E) (P)

**COMMENTS:** Another medium framed big volume first calving Glenlea HI GUY (P) daughter this time with a thumping polled bull calf at foot, by "LOUIS". HI GUY progeny feature perfect udders and teats, very fine hair coat with plenty of growth, sound feet and L48 is no exception. Her dam is a lovely Jackson bred female from Guyra, G11 who sells as lot 22, she and all of the "G" drop females were foundation females for the waterfall herd and made the adaption from over the range to the coast. P32 bull calf had the lowest birthweight out of his group and may well be a suitable stud heifer bull with added punch.

Polled Bull calf at foot GLE P32E, by "LOUIS" born 28/6/18. 75% chance P32 is homozygous polled.

Rejoined to Glenlea Honorable (P) R/F from 22/10/18/18 to 1/2/19



March 2019 Australasian Charolais BREEDPLAN Analysis

	CE Dir	GL	BW	200	400	600	Milk	SS	Carc Wt	EMA	Rump	IMF
EBV	-8.3	-3.0	+1.2	+15	+30	+44	+6	+1.3	+24	+1.5	-0.2	+0.5
Acc	42%	43%	67%	48%	49%	52%	37%	43%	40%	33%	38%	30%

**LOT: 6****ORARA WATERFALL MEAGAN (P)**

TATTOO: WFA M34E DOB: 12/07/2016

View the video of M34 and P78 at [www.glenleabeef.com.au](http://www.glenleabeef.com.au)

RANGAN PARK RIO BRAVO D15 (RAN D15E) (P)

**SIRE: GLENLEA HI GUY (GLE H52E) (P)**

GLENLEA CAAROL W8E (GLE W8E)

GLENLEA FREEWAY (GLE F22E) (P)

**DAM: GOODVIEW BLONDIE 3RD (HEL J10E) (P)**

GOODVIEW BLONDIE (HEL B4E) (P)

**COMMENTS:** Double polled, slick coated female. Lovely well attached udder scored 5 out of 5 at birth and same for teat placement and size. We udder score all our females. A little extra bone and scale with a lovely temperament. Her dam is a feature at LOT 12 with twin heifers at foot, and she has produced some outstanding progeny with N42, her 2017 drop bull being one of our lead sale bulls this year. Bull calf at foot is one of the youngest spring calves in the sale and exhibits all the same beefy qualities that all the LOUIS progeny do. EBV's are that are the top of breed, lots of growth, and carcass traits to go with it, M34 will mature into a great breeding cow.

Polled Bull calf at foot WFA P78E, by "LOUIS" born 27/9/18. 75% chance P78 is homozygous polled

Rejoined to Glenlea Honorable (P) R/F from 12/11/18/18 to 1/2/19.



March 2019 Australasian Charolais BREEDPLAN Analysis

	CE Dir	GL	BW	200	400	600	Milk	SS	Carc Wt	EMA	Rump	IMF
EBV	-6.1	-3.5	+1.2	+17	+32	+48	+10	+1.8	+23	+1.9	+1.5	+1.1
Acc	40%	37%	52%	40%	40%	41%	34%	40%	34%	30%	31%	28%



**LOT: 7****ORARA WATERFALL MARGO (P)**

TATTOO: WFA M35E DOB: 14/07/2016



**COMMENTS:** Another stylish, quiet, slick coated HI GUY daughter. More moderate in frame than previous lot, double polled with a cracking bull calf at foot. We love this type of female, the Elsa cow family has been one of the most prolific at GLENLEA with the grand dam of this heifer selling at LOT 96 and was a foundation cow for the Waterfall stud. EBV's once again moderate birth, breed leading growth and those all important carcass traits right in the sweet spot of extra muscle, extra fat cover and high IMF% and those traits are reflected in the physical animal.

View the video of M35 and P73 at [www.glenleabeef.com.au](http://www.glenleabeef.com.au)

RANGAN PARK RIO BRAVO D15 (RAN D15E) (P)

**SIRE: GLENLEA HI GUY (GLE H52E) (P)**

GLENLEA CAAROL W8E (GLE W8E)

ROSEDALE DINGA (MR D25E) (P)

**DAM: ORARA WATERFALL ELSA 1ST (WFA K3E) (P)**

GLENLEA ELSA G24E (GLE G24E) (P)

Polled Bull calf at foot WFA P73E, by "LOUIS" born 25/9/18. 75% chance P73 is homozygous polled.

Rejoined to Glenlea Honorable (P) R/F from 12/11/18/18 to 1/2/19.



March 2019 Australasian Charolais BREEDPLAN Analysis

	CE Dir	GL	BW	200	400	600	Milk	SS	Carc Wt	EMA	Rump	IMF
EBV	+0.1	-3.8	+0.2	+15	+30	+47	+11	+1.5	+24	+1.5	+1.0	+0.9
Acc	44%	45%	70%	50%	51%	54%	38%	44%	42%	35%	40%	34%

**LOT: 8****ORARA WATERFALL MANDY 1ST (P)**

TATTOO: WFA M36E DOB: 12/09/2016



**COMMENTS:** Very similar the previous lot, but this time with a very stylish replacement heifer at foot to build your herd. Perfect udder and teats, lovely temperament. Sired by the "Grandiose" bull this time, many top young females by this bull in the sale. M36's dam is from the JA-CIE cow family from Fernvale Charolais, a cow family that has a great reputation in the breed. EBV's are showing a low birthweight with plenty of growth and again those excellent carcass values. These females you can build a program with.

Polled Heifer calf at foot WFA P74E, by "LOUIS" born 25/9/18. 75% chance P74 is homozygous polled. Rejoined to Glenlea Honorable (P) R/F from 12/11/18/18 to 1/2/19.

EC NO DOUBT 2022 P M685500 (OAU Z2022E) (P)

**SIRE: LITTLE VALLEY GRANDIOSE (GKB G5E) (P)**

LITTLE VALLEY DOLLY (GKB D5E) (P)

MD SENTINAL RULER G1520 M509416 (OAU S9416E) (P/S)

**DAM: THW MANDIE (THW G11E) (P)**

THW MANDIE JA-CIE (THW D15E) (P)

View the video of M36 and P74 at [www.glenleabeef.com.au](http://www.glenleabeef.com.au)



March 2019 Australasian Charolais BREEDPLAN Analysis

	CE Dir	GL	BW	200	400	600	Milk	SS	Carc Wt	EMA	Rump	IMF
EBV	+2.1	-2.0	-0.2	+13	+25	+33	+9	+0.0	+22	+1.9	+1.3	+0.4
Acc	44%	50%	68%	49%	49%	51%	39%	37%	39%	31%	37%	30%

**LOT: 9****ORARA WATERFALL MASEY 1ST (P)**

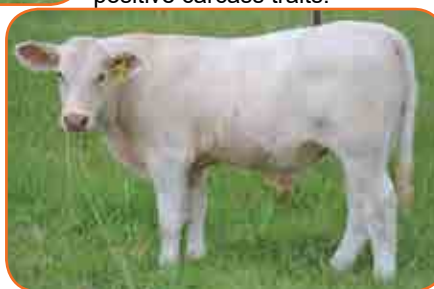
TATTOO: WFA M21E DOB: 15/04/2016



**COMMENTS:** A deep bodied female that's done a great job on her bull calf. Super temperament, extra scale and perfect udder. All these spring calvers are toward the end of there lactation and these big calves are taking every drop of milk as soon as its produced, we could have pulled the calves off over night and then took photos as many sales do to fill udders, just like at a show, but decided against this so as to present the cattle as they are when many people may bid online, with the photos and videos guiding there purchasing. Bull calf at foot a heifer sire prospect with lowest actual BW of all "LOUIS" bull calves born at Coffs Harbour Property. M21 dam is a lovely Jackson bred cow that was sold last year to a new breeder to start a new stud, a number of Jackson cows are in the sale and were part of the foundation purchase of females for Waterfall. EBV's are showing that same spread that reflect to goals of the breeding program, low to moderate BW, well above average growth and all positive carcass traits.

View the video of M21 and P76 at [www.glenleabeef.com.au](http://www.glenleabeef.com.au)

EC NO DOUBT 2022 P M685500 (OAU Z2022E) (P)  
**SIRE: LITTLE VALLEY GRANDIOSE (GKB G5E) (P)**  
 LITTLE VALLEY DOLLY (GKB D5E) (P)  
 ROSEDALE DINGA (MR D25E) (P)  
**DAM: JACKSON GRETA (MEJ G10E) (P)**  
 JACKSON COUNTESS (MEJ C233E) (P)



Polled bull calf at foot WFA P76, by "LOUIS" born 27/9/18. 75% chance P76 is homozygous polled.

Rejoined to Glenlea Honorable (P) R/F from 12/11/18/18 to 1/2/19.



March 2019 Australasian Charolais BREEDPLAN Analysis

	CE Dir	GL	BW	200	400	600	Milk	SS	Carc Wt	EMA	Rump	IMF
EBV	+2.4	-2.4	-0.2	+14	+28	+41	+10	+0.8	+27	+1.8	+0.6	+0.0
Acc	43%	42%	58%	42%	42%	43%	36%	33%	34%	28%	31%	28%

**LOT: 10****ORARA WATERFALL JANET 2ND (AI) (P)**

TATTOO: WFA M10E DOB: 18/03/2016

View the video of M10 and P79 at [www.glenleabeef.com.au](http://www.glenleabeef.com.au)

LT RIO BRAVO 3181 P M665507 (OAU Y5507E) (P)  
**SIRE: RANGAN PARK RIO BRAVO D15 (RAN D15E) (P)**  
 PALGROVE SHOW GIRL 6 (PK P82E) (P)  
 RANGAN PARK RIO BRAVO D15 (RAN D15E) (P)  
**DAM: GLENLEA JANET 71ST (GLE J16E) (P)**  
 GLENLEA JANET 26TH R/F (PS) (GLE C8E) (P)



**COMMENTS:** A rare line breeding genetic package here, product of mating sire to daughter, lovely polled female, so refined through the front end. Has done a great job on her heifer calf, perfect udder and teats that will last her lifetime. These young females are so versatile, mated to power bulls with French influence will breed bulls for northern markets or to moderate early maturing bulls to produce progeny for the southern markets. Dam is a great young cow, selling at LOT 60, with a very nice bull calf at foot. EBV's are in that same pattern as all these young females, this female has that lower BW and early GESTATATION, so if your environment has higher BW or your market for bulls extra sensitive to BW here is your new addition, great carcass figures, top 5% of the breed!

Polled Heifer calf at foot WFA P79E, by "LOUIS" born 30/9/18. 75% chance P79 is homozygous polled. Rejoined to Glenlea Honorable (P) R/F from 12/11/18/18 to 1/2/19.



March 2019 Australasian Charolais BREEDPLAN Analysis

	CE Dir	GL	BW	200	400	600	Milk	SS	Carc Wt	EMA	Rump	IMF
EBV	+0.7	-5.8	-0.3	+18	+36	+45	+13	+1.1	+28	+3.0	+1.7	+1.2
Acc	56%	70%	73%	61%	61%	62%	56%	56%	54%	47%	49%	46%

**LOT: 11****ORARA WATERFALL VANITY 1ST (P)**

TATTOO: WFA M9A DOB: 10/03/2016

View the video of M9 and P59 at [www.glenleabeef.com.au](http://www.glenleabeef.com.au)

EC NO DOUBT 2022 P M685500 (OAU Z2022E) (P)

**SIRE: LITTLE VALLEY GRANDIOSE (GKB G5E) (P)**

LITTLE VALLEY DOLLY (GKB D5E) (P)

**DAM: ORARA WATERFALL F6068 (WFA F6068Z) (P)**

**COMMENTS:** This female was held back for this sale, nearly all other "A" grade females were sold last year, out of an old Myall cow that was sired by Palgrove Valiant, up until last year Australian record priced Charolais bull from way back in 2002 at \$61,000. Double polled, Deep, quiet and with an extra long bodied bull calf that we think will grow very well! A top young cow that will breed a lifetime of outstanding progeny. EBV's are preliminary and will improve as data is submitted to breedplan as her dam was unable to be registered in the Waterfall herd, so her data is not available and hence the "A" grade for M9.

Polled Bull calf at foot WFA P59E, by "LOUIS" born 27/9/18. 75% chance P59 is homozygous polled. Rejoined to Glenlea Honorable (P) R/F from 12/11/18/18 to 1/2/19.



March 2019 Australasian Charolais BREEDPLAN Analysis

	CE Dir	GL	BW	200	400	600	Milk	SS	Carc Wt	EMA	Rump	IMF
EBV	-5.6	-3.6	+0.1	+9	+21	+28	+6	+0.5	+21		+1.1	
Acc	36%	32%	41%	31%	31%	32%	28%	26%	26%		25%	

**LOT: 12****GOODVIEW BLONDIE 3RD (P)**

TATTOO: HEL J10E DOB: 20/12/2013

View the video of J10, P49 and P50 at [www.glenleabeef.com.au](http://www.glenleabeef.com.au)

LT RIO BRAVO 3181 P M665507 (OAU Y5507E) (P)

**SIRE: GLENLEA FREEWAY (GLE F22E) (P)**

THW WINDY WENDY (THW D1E) (P)

CHAROFIBI XPO (FRC X2E)

**DAM: GOODVIEW BLONDIE (HEL B4E) (P)**

GOODVIEW ZARA (HEL Z3E) (P)

**COMMENTS:** First of the mixed age cows, a very good young cow with twin polled heifers at foot, 4 in 1 package! Long, square and feminine, classic wedge shaped female. Dam of Lot 6 in this sale, J10 is sired by "Freeway" who was one of the highest bulls for fat cover we have ever bred and was purchased by Goodview at out 2012 sale. J10 was a calf at foot when we purchased the Goodview herd in 2013. Her 2017 drop bull N42 is one of the lead sale bulls for this year, she has raised the twins with no special treatment and is a great value package for any buyer. EBV's we are getting repetitive, sound, strong phenotype females with great EBV's, the product of sound mating selection and only retaining the females that perform to expectations.

Twin Polled Heifer calves at foot WFA P49E and P50E, by "LOUIS" born 9/9/18. 75% chance P49 and P50 are homozygous polled. Rejoined to Glenlea Honorable (P) R/F from 12/11/18/18 to 1/2/19.



March 2019 Australasian Charolais BREEDPLAN Analysis

	CE Dir	GL	BW	200	400	600	Milk	SS	Carc Wt	EMA	Rump	IMF
EBV	+2.0	-3.2	+0.1	+14	+27	+38	+9	+1.4	+19	+1.5	+1.4	+0.7
Acc	37%	34%	51%	39%	38%	38%	33%	30%	31%	26%	27%	25%

**LOT: 13****GLENLEA CONFIDENCE 6TH (P)****TATTOO: GLE H13E DOB: 26/03/2012**

**COMMENTS:** Powerful "BIG GUN" daughter, long and square, with a massive loin when in full condition, great milker, maximum performance cow, foundation female in the Waterfall herd, a daughter sells at Lot 109. 4 in 1 package again with twin calves at foot! Extra fine hair coat, ideal female to breed bulls for the northern market over Bos Indicus cows, has raised twins and done a great job, and maintained herself, it's a big job in a coastal environment to raise twins to good weights without significant extra feeding. H13's dam was a prolific producer at GLENLEA after being selected as one of our top picks at the 2011 dispersal of the Gobongo herd, she was sold at our 2017 sale for \$5250 to Tractor Charolais and her "Honorable" heifer that was in utero at that time went on to be a class winner at Brisbane Royal in 2018. Another sister of H13 sells as LOT 49. EBV's maximum performance top 10%, 400 and 600 weights, top 5% mature cow weight with very high yielding carcass, top 5% Retail Beef Yield and you can see that in her twin bull calf P53

View the video of H13, P53 and P54 at [www.glenleabeef.com.au](http://www.glenleabeef.com.au)



Twin calves, Polled Bull calf WFA P53E, and heifer calf P54 by "LOUIS" born 11/9/18. 75% chance P53 and P54 are homozygous polled. A.I. to JC LANNISTER (P) 12/12/18. Exposed Glenlea Kenworth (P) Reference sire from 13/12/18/ to 22/3/19.

ICARE 7193116802 (OAF N7193F)

**SIRE: GLENLEA BIG GUN (GLE B10E) (P)**

GLENLEA JANET U6E R/F (GLE U6E) (P)

ADVANCE XR8 (ADV X50E)

**DAM: GOBONGO CONFIDENCE C13E (GO C13E) (P)**

FREDERIC CONFIDENCE L9E (PBS L9E) (P)



March 2019 Australasian Charolais BREEDPLAN Analysis

	CE Dir	GL	BW	200	400	600	Milk	SS	Carc Wt	EMA	Rump	IMF
EBV	-18.5	-0.8	+3.7	+18	+34	+46	+5	+0.8	+24	+1.6	-1.5	-0.2
Acc	50%	53%	75%	64%	66%	69%	48%	48%	56%	44%	58%	36%

**LOT: 14****GOBONGO ELLA E412E (AI)****TATTOO: GO E412E DOB: 29/11/2009**

CALF PHOTO SALE DAY

**COMMENTS:** Great Gobongo Matron. Extra low BW daughter of "Prime Cut" from a great cow family in the now dispersed Gobongo herd. Twin Polled bull calves at foot that have good scale and will grow out into great sale bulls, there sire "LOUIS" will add punch to their carcass traits. Very sound and great udder, and still has lots of productive life in front of her, they don't stay around to become Matrons of the herd if they not doing the job! This is a great value 4 in 1 package if ever there was one! EBV's very low BW top 10%, as is calving ease and scrotal traits. E412 will handle the power bulls and tha's why she was A.I. to new French Homozygous polled bull ISIDOR.

Twin Polled Bull calves WFA P43E and WFA P44 by "LOUIS" born 1/9/18. A.I. to ISIDOR (P) 12/12/18. Exposed Glenlea Kenworth (P) HOMOZYGOUS POLLED Reference sire from 13/12/18/ to 22/3/19.

View the video of E412E, P43 and P44 at [www.glenleabeef.com.au](http://www.glenleabeef.com.au)

JWK IMPRESSIVE D040 ET MC202971 (PED -3653E) (P)

**SIRE: WCR PRIME CUT 764 PLD PMC223447 (OAC S764E) (P)**

WCR MISS EASE 4314 SOF704053 (PED O4093E)

GOBONGO VILLEROY V80E (GO V80E)

**DAM: GOBONGO ELLA C148E (GO C148E)**

GOBONGO ELLA (GO T39E)



March 2019 Australasian Charolais BREEDPLAN Analysis

	CE Dir	GL	BW	200	400	600	Milk	SS	Carc Wt	EMA	Rump	IMF
EBV	+7.4	-5.6	-2.0	+11	+21	+31	+5	+2.0	+17	+0.1	-0.7	+0.1
Acc	54%	56%	66%	59%	58%	59%	56%	58%	52%	47%	50%	46%

**LOT: 15****JACKSON GALA (P)****TATTOO: MEJ G6E DOB: 30/08/2011**

View the video of G6 and P48 at [www.glenleabeef.com.au](http://www.glenleabeef.com.au)

ICARE 7193116802 (OAF N7193F)

**SIRE: GLENLEA BIG GUN (GLE B10E) (P)**

GLENLEA JANET U6E R/F (GLE U6E) (P)

EXCLUSIF 8589103317 (OAF J858F)

**DAM: JAY TEES ADELPHI (JT A12E) (P)**

JAY TEES XCITEMENT (JT X3E) (P)

**COMMENTS:** Deep, square and great doing female. Another real performance daughter of "BIG GUN". Great milker, so structurally sound and classic wedge shape. One of the foundation females of the Waterfall herd being in the first purchase of females from GLENLEA and JACKSON Herds and after years of culling, and a major reduction sale in 2015 she is still here. Outstanding polled bull calf at foot. G6's daughter, K34 sells with her calf at foot as LOT 63 and joined heifer N43 at LOT 106. EBV's are top of the table, top 10% all growth traits and Retail Beef Yield.

Polled Bull calf WFA P48E by "LOUIS" born 8/9/18. A.I. to JC Lannister (P) 12/12/18. Exposed Glenlea Kenworth (P) HOMOZYGOUS POLLED Reference sire from 13/12/18/ to 22/3/19.

Charolais GROUP BREEDPLAN	March 2019 Australasian Charolais BREEDPLAN Analysis											
	CE Dir	GL	BW	200	400	600	Milk	SS	Carc Wt	EMA	Rump	IMF
EBV	-18.2	-1.0	+3.2	+19	+32	+49	+5	+0.8	+25	+1.8	-0.7	+0.1
Acc	50%	57%	73%	55%	55%	56%	45%	45%	44%	35%	40%	32%

**LOT: 16****JACKSON GRACE (P)****TATTOO: MEJ G26E DOB: 23/07/2011**

View the video of G26 and P69 at [www.glenleabeef.com.au](http://www.glenleabeef.com.au)

PARINGA NOVOTEL A100 (TOL A100E) (P)

**SIRE: ROSEDALE DINGA (MR D25E) (P)**

ROSEDALE WALLAH Z27 (MR Z27E)

ROSEDALE WOODROW (MR W144E) (P)

**DAM: JACKSON ZIGGY (MEJ Z1E) (P)**

MOOMBI STONEHUT L01E (JOB L1E) (P)

**COMMENTS:** Big, Deep, great doing female, loads of milk, sired by the impact sire "DINGA" who was 2010 Senior Champion Bull at Sydney Royal and his daughters are producing lead progeny in many herds around the country, G26 is no exception. Thumping polled bull calf at foot, stud heifer bull prospect at foot P69. Lowest actual BW of all "LOUIS" bull calves out of cows. Three daughters in the sale K27, Lot 92, M41, Lot 89 and N57, Lot 105. EBV's top 5% milk, top 10% of Breed for BW and Direct Calving ease

Polled Bull calf WFA P69E by "LOUIS" born 21/9/18. A.I. to ISIDOR (P) 12/12/18. Exposed Glenlea Kenworth (P) HOMOZYGOUS POLLED Reference sire from 13/12/18/ to 22/3/19.

Charolais GROUP BREEDPLAN	March 2019 Australasian Charolais BREEDPLAN Analysis											
	CE Dir	GL	BW	200	400	600	Milk	SS	Carc Wt	EMA	Rump	IMF
EBV	+10.6	-2.6	-2.1	+7	+13	+23	+14	+1.2	+15	+0.9	+0.4	+0.1
Acc	49%	51%	74%	53%	54%	56%	43%	41%	42%	33%	35%	32%

**LOT: 17****GOODVIEW BARDOT 3RD (P/S) (R/F)**

TATTOO: HEL J2E DOB: 20/11/2013



**COMMENTS:** WOW check out this cow's red factor bull calf at foot. the video gives a better idea of his quality than the photo. Medium framed, long bodied, real performance young cow, classic wedge shape, with great pelvic area. Another daughter of impact sire "BIG GUN" who is a trait leading sire for all growth traits. Polled Red Factor Bull calf at foot, P70 is a Stud Sire prospect! EBV's breed leading growth with strong carcass value.

View the video of J2 and P70 at [www.glenleabeef.com.au](http://www.glenleabeef.com.au)

ICARE 7193116802 (OAF N7193F)

**SIRE: GLENLEA BIG GUN (GLE B10E) (P)**

GLENLEA JANET U6E R/F (GLE U6E) (P)

PALGROVE WISDOM (PK W328E) (P)

**DAM: GOODVIEW BARDOT (HEL B6E) (P)**

GOODVIEW YUM YUM (HEL Y3E)

Polled Red Factor Bull calf WFA P70E by "LOUIS" born 21/9/18. A.I. to JC Lannister (P) 12/12/18. Exposed Glenlea Kenworth (P) HOMOZYGOUS POLLED Reference sire from 13/12/18/ to 22/3/19.

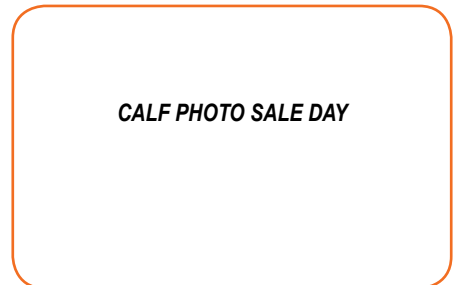


March 2019 Australasian Charolais BREEDPLAN Analysis

	CE Dir	GL	BW	200	400	600	Milk	SS	Carc Wt	EMA	Rump	IMF
EBV	-12.1	-1.8	+2.4	+18	+30	+46	+4	+1.1	+24	+1.8	-0.3	+0.2
Acc	47%	47%	61%	48%	48%	49%	40%	40%	38%	30%	34%	27%

**LOT: 18****GOODVIEW BIANCA 2ND (P) (R/F)**

TATTOO: HEL J8E DOB: 26/11/2013



**COMMENTS:** Big framed, Polled Red Factor cow, long bodied and very fine haired as most "BIG GUN" progeny are. Has the youngest spring born bull calf at foot that will grow out into a powerful sire.

Polled Red Factor Bull calf WFA P86E by "LOUIS" born 28/10/18. 75% chance P86 is HOMOZYGOUS POLLED. Exposed Glenlea Kenworth (P) HOMOZYGOUS POLLED Reference sire from 13/12/18/ to 22/3/19.

ICARE 7193116802 (OAF N7193F)

**SIRE: GLENLEA BIG GUN (GLE B10E) (P)**

GLENLEA JANET U6E R/F (GLE U6E) (P)

ADVANCE VOUCHER (ADV V10E)

**DAM: GOODVIEW BIANCA (HEL B1E) (P)**

GOODVIEW TERRIFIC (HEL T1E) (P)



March 2019 Australasian Charolais BREEDPLAN Analysis

	CE Dir	GL	BW	200	400	600	Milk	SS	Carc Wt	EMA	Rump	IMF
EBV	-12.7	-1.0	+2.5	+16	+25	+38	+1	+0.8	+21	+1.6	-0.7	
Acc	43%	44%	57%	45%	44%	45%	37%	36%	35%	26%	31%	

**LOT: 19****MULLUM SANDY 2 (AI) (P) (R/F)****TATTOO: BLA D8E DOB: 01/09/2008**

**COMMENTS:** A pick Matron from the Mullum herd purchased in 2015. Only female in sale by LT SILVER VALUE (P) who has left a great set of Polled females in the Palgrove herd. Has a quality poll/scur Red Factor bull calf at foot, a daughter of this cow sold for \$6000 at the recent Charnelle invitational sale. A easy doing, soft, long bodied cow with Medium frame who's progeny have always been at the top of the drop. EBV's top 5% for growth with positive EMA and Fat Traits.

S\$ MONTANA SILVER M454024 (OAU R4024E) (P)

**SIRE: LT SILVER VALUE 2122 P M645761 (OAU X5761E) (P)**

LT UNLIMITED MAID 7184 P F793032 (PED -7184E) (P)

GUNNADOO X258E (GN1 X258E)

**DAM: NOLLER SANDY Z152E (JLN Z152E) (P)**

GUNNADOO SANDY V205E (GN1 V205E) (P)

Polled/Scur Bull calf GLE P82E by "HONORABLE" born 4/10/18. Exposed Chalambi Norman (P) 1/2/19 to 11/4/19 HOMOZYGOUS POLLED top priced bull \$10,000 as a 12 month old calf at HUON/CHALAMBI 2018 sale.

**March 2019 Australasian Charolais BREEDPLAN Analysis**

	CE Dir	GL	BW	200	400	600	Milk	SS	Carc Wt	EMA	Rump	IMF
EBV	-12.5	-2.1	+3.0	+20	+40	+49	+2	+0.1	+26	+1.0	+0.2	+0.4
Acc	49%	75%	71%	57%	57%	57%	53%	53%	46%	39%	40%	38%

**LOT: 20****ORARA WATERFALL CARA 1ST****TATTOO: WFA L22E DOB: 30/03/2015**

**COMMENTS:** Another quality "Hilton" daughter, she wasn't planned to be offered in this sale as she was committed last year as a joined female to a buyer and that person's circumstances changed so the sale did not go ahead and here she is. L22 has been at a different property and doesn't present in the same body condition as the other spring drop females. She's come with built in "anti dog device" classic shaped horns. A typical "HILTON" daughter deep bodied, naturally thick, classic wedge shape, broad muzzle. Her Polled heifer calf at foot is very stylish, great bodied heifer sired by "GRANDIOSE" and will make a great cow in the future. EBV'S again reflect that goal of moderate BW with excellent growth and positive carcass traits.

RANGAN PARK REDEMPTION E42 (RAN E42E) (P)

**SIRE: GLENLEA HILTON (GLE H30E) (P)**

GLENLEA CAAROL X11E (GLE X11E)

ROSEDALE ZIGZAG (MR Z142E) (P)

**DAM: GOODVIEW CARA (HEL C8E)**

GOODVIEW ZARA (HEL Z3E) (P)

Polled Heifer calf WFA P67E by "GRANDIOSE" born 21/9/18. PTIC to Chalambi MUSCLES (P) HOMOZYGOUS POLLED joining sire from 1/11/18 to 16/1/19

**March 2019 Australasian Charolais BREEDPLAN Analysis**

	CE Dir	GL	BW	200	400	600	Milk	SS	Carc Wt	EMA	Rump	IMF
EBV	+0.1	-0.6	+0.2	+12	+28	+40	+9	+0.8	+24	+1.2	+0.3	+0.3
Acc	37%	44%	68%	45%	45%	48%	33%	39%	35%	28%	29%	25%

**LOT: 21****PIPECLAY G2E****TATTOO: ROL G2E DOB: 01/09/2011**

**COMMENTS:** Big volumed, Deep bodied, Polled cow. Strong French influence in her pedigree. Dam of Lot 2 "GOLD STAR LOT". Medium framed with plenty of milk. She has another outstanding heifer calf at foot by "LOUIS". EBV's really don't reflect the quality of this female and that's not uncommon with bloodlines heavily influenced by French genetics. Additionally, her bloodlines have little data recorded, except for sire of dam and as such also tends to pull the EBV's back toward the average, this cow is above average and as more of her progeny get analyzed and there progeny her figures will improve for growth and especially for carcass traits.

View the video of G2 and P52 at [www.glenleabeef.com.au](http://www.glenleabeef.com.au)

JACKSON ZODIAC (MEJ Z7E) (P)

**SIRE: CB CANTERBURY (CBL C13E) (P)**

HARLEYWOOD ANNA 3 (WEA S10E) (P)

LAUREL 7195122401 (OAF Q7195F)

**DAM: PIPECLAY BOP BOP (ROL B2E)**

PALGROVE ESTELLA 137 (PK W323E)

Polled heifer calf WFA P52Eby "LOUIS" born 11/9/18. 75% chance P52 is Homozygous Polled. A.I. to JC Lannister(P) 12/12/18. Exposed Glenlea Kenworth (P) HOMOZYGOUS POLLED Reference sire from 13/12/18/ to 22/3/19.



March 2019 Australasian Charolais BREEDPLAN Analysis

	CE Dir	GL	BW	200	400	600	Milk	SS	Carc Wt	EMA	Rump	IMF
EBV	-7.5	-0.8	+1.6	+9	+20	+25	+7	+0.2	+15	+1.1	-0.7	+0.3
Acc	39%	38%	55%	41%	42%	45%	36%	32%	36%	29%	30%	27%

**LOT: 22****JACKSON GOLDIE (P) (TW)****TATTOO: MEJ G11E DOB: 29/09/2011**

**COMMENTS:** This lot and next lot are twins. Lovely quiet medium framed female with excellent udder and plenty of thickness. Dam of Lot 5 in this sale. Another daughter of "BIG GUN" and has that extra overall yield and power, that is passed onto progeny and her heifer calf at foot is no exception, very stylish, great bodied heifer. EBV's show top 15% growth and top 1% Retail Beef yield

View the video of G11 and P60 at [www.glenleabeef.com.au](http://www.glenleabeef.com.au)

ICARE 7193116802 (OAF N7193F)

**SIRE: GLENLEA BIG GUN (GLE B10E) (P)**

GLENLEA JANET U6E R/F (GLE U6E) (P)

ROSEDALE YNOT (MR Y35E) (P)

**DAM: JACKSON BLISS (MEJ B81E) (P)**

PALGROVE IDEAL 20 (PK M81D)

Polled heifer calf WFA P60E by "LOUIS" born 17/9/18. 75% chance Homozygous Polled. Exposed Glenlea Kenworth (P) HOMOZYGOUS POLLED Reference sire from 13/12/18/ to 22/3/19.



March 2019 Australasian Charolais BREEDPLAN Analysis

	CE Dir	GL	BW	200	400	600	Milk	SS	Carc Wt	EMA	Rump	IMF
EBV	-0.7	+0.3	+1.2	+14	+29	+42	0	+0.6	+28	0.0	-3.5	0.4
Acc	65%	66%	76%	78%	75%	77%	82%	74%	69%	62%	65%	57%



**LOT: 23****JACKSON GINGER (P) (TW)****TATTOO: MEJ G12E DOB: 29/09/2011**

**COMMENTS:** Broad muzzle, big strong feet, structurally very correct, very quiet, as you would expect in a mature stud female. Will breed on for many years to come in and have proven her ability to adapt to new environment, being born over the range and coming to the coast as a joined 2 year old female. Great bodied polled heifer calf at foot that has a fine hair coat and know doubt could be a show heifer! Ebv's powerful growth figures, in top 10% of breed.

View the video of G12 and P57 at [www.glenleabeef.com.au](http://www.glenleabeef.com.au)

ICARE 7193116802 (OAF N7193F)

**SIRE: GLENLEA BIG GUN (GLE B10E) (P)**

GLENLEA JANET U6E R/F (GLE U6E) (P)

ROSEDALE YNOT (MR Y35E) (P)

**DAM: JACKSON BLISS (MEJ B81E) (P)**

PALGROVE IDEAL 20 (PK M81D)

Polled heifer calf WFA P57E by "LOUIS" born 12/9/18. A.I. to JC Lannister (P) 12/12/18. Exposed Glenlea Kenworth (P) HOMOZYGOUS POLLED Reference sire from 13/12/18/ to 22/3/19.

Charolais GROUP BREEDPLAN	March 2019 Australasian Charolais BREEDPLAN Analysis											
	CE Dir	GL	BW	200	400	600	Milk	SS	Carc Wt	EMA	Rump	IMF
EBV	-12.3	-1.2	+2.3	+17	+31	+48	+2	+1.0	+26	+0.5	-1.1	-0.2
Acc	49%	51%	72%	59%	60%	65%	44%	53%	52%	41%	54%	37%

**LOT: 24****GOBONGO UMA F56E****TATTOO: GO F56E DOB: 16/09/2010**

**COMMENTS:** What a heifer calf! Youngest in the spring drop and so much growth and style. A Gobongo Matron very sound in every way and exceptional milker. Very fine haired and classic wedge shape, so neat in the front end with a great pelvis and such a deep bodied good doing cow on a medium frame. Heifer calf is outstanding show prospect. EBV's have moderate growth and very solid carcass traits

View the video of F56 and P85 at [www.glenleabeef.com.au](http://www.glenleabeef.com.au)

HARVIE REDEMPTION 36P MC286641 (OAC Z6641E) (P)

**SIRE: GOBONGO DECOY D85E (GO D85E) (P)**

GOBONGO LILLIAN U2E (GO U2E)

ROSEDALE ZEPHLIN (MR Z146E) (P)

**DAM: GOBONGO UMA D18E (GO D18E) (P)**

GOBONGO UMA A19E (GO A19E)

Polled heifer calf WFA P85E by "LOUIS" born 25/10/18. Exposed Glenlea Kenworth (P) HOMOZYGOUS POLLED Reference sire from 13/12/18/ to 22/3/19.

Charolais GROUP BREEDPLAN	March 2019 Australasian Charolais BREEDPLAN Analysis											
	CE Dir	GL	BW	200	400	600	Milk	SS	Carc Wt	EMA	Rump	IMF
EBV	+2.1	-1.7	-0.4	+8	+19	+27	+11	+1.4	+17	+1.4	+1.5	+0.5
Acc	36%	36%	49%	47%	49%	47%	41%	44%	41%	32%	34%	31%

# Glenlea Beef Presents:

## 14 SHOW PROSPECT HEIFERS

These Heifers were to join the GLENLEA herd, but when this sale was decided upon I decided that they needed to be offered considering they were progeny of the WATERFALL autumn calving cows. These heifers represent an entire drop, less two heifers. GLE P109E was offered and sold at the recent Charnelle Invitational for \$4250 and GLE P106E was horned and so has been retained. All these heifers were Halter Broken at Pinedock Fitting near Casino, NSW. James Dockrill is listed as a contact for this sale.

They will be A.I. post Easter to EXCLUSIVE SIRE SPARROWS KINGSTON (P) record auction price holder in Canada, sold for \$CA155,000 at Auction. Proven Low Birthweight sire that has excellent growth. We thank Lindsey and Belinda Hindle, FAIRFIELD CHAROLAIS for allowing us access to the KINGSTON Semen as they and Venturon Charolais (Thompson Family) in WA own the exclusive rights and no other studs have progeny in Australia currently. After which they will be run with GLENLEA KENWORTH (P) a HOMOZYGOUS POLLED Reference Sire, for 6 weeks taking them through till mid June at which time delivery would occur.

The purchaser's are under no obligation to do this, we are extending the offer as part of our DROUGHT BUSTER SALE OFFERS. And we feel it's an extremely good offer.



**SPARROWS KINGSTON (P)**

### "DROUGHT BUSTER" SALE OFFERS:

- 50% of sale price paid under normal Elders terms, balance due in 6 months with no interest. TAP (This must be arrange direct with vendor prior to auction.)
- There will be NO agistment charged during this period. The cost of running the A.I. Program, the drugs, technician and semen, will be \$200 + gst per head. If the heifers are to stay after the bull has been with them for 6 weeks, \$7 + gst, per week per head agistment will apply.

### TESTIMONIAL FROM GRANT TAYLOR, TAYLOR LIVESTOCK, NOWRA NSW

*In May 2016 I searched the internet for Charolais breeders. I called three breeders and had long conversations with each. Roderick Binny was very informative and helpful and everything that he offered, he delivered.*

*Since then I have purchased my entire herd plus three Bulls all of which were "sight unseen". The quality and temperament of the stock delivered has been second to none.*

*Roderick's after sale service has been impeccable. I have called him many times, seeking advice.*

*The quality of Charolais in Taylor Livestock is all thanks to Roderick's guidance and experience.*

*We recently purchased at Charnelle Invitational sale Glenlea Chiffon 10th (P) (R/F) and Glenlea Isabella 3rd (P) to ensure Glenlea bloodlines is the future of our business.*

*Roderick Binny best described as a "bloody good bloke"!*



**Grant Taylor**

**LOT: 25****GLENLEA HALINA 3RD (P)****TATTOO: GLE P101E DOB: 21/02/2018**

**COMMENTS:** Blake Munro's Elders QLD pick heifer out of the show heifers. Dam is a big volumed female selling at LOT 82. Growth, style and thickness, perfect nature and double polled. This is the type of heifer that will end up in the donor herd and/ or with a broad ribbon at a major show. Sire is producing very consistent high value progeny. The video of this heifer really says it all. Ebv's top 20% 400 and 600 day weight, top 10% EMA. Her scan data on the 20/2/19 EMA 88cm<sup>2</sup>, Rump 12mm, IMF% 4.8, weight 506kg

To be A.I. after Easter and run with Homozygous stud sire for 6 weeks, delivery to purchaser mid June or purchaser can take delivery immediately. Full details of offer to A.I. and run with sire see the sale details section at front of catalogue.

View the video of P101E at [www.glenleabeef.com.au](http://www.glenleabeef.com.au)

EC NO DOUBT 2022 P M685500 (OAU Z2022E) (P)

VIOLET HILLS ZACHARIAH (VHV Z80E) (P)

**SIRE: LITTLE VALLEY GRANDIOSE (GKB G5E) (P)****DAM: JACKSON HALINA (MEJ H149E) (P)**

LITTLE VALLEY DOLLY (GKB D5E) (P)

JACKSON CHICKEN (MEJ C49E) (P)

Charolais	March 2019 Australasian Charolais BREEDPLAN Analysis											
	CE Dir	GL	BW	200	400	600	Milk	SS	Carc Wt	EMA	Rump	IMF
EBV	-5.0	-2.5	+1.5	+18	+31	+42	+4	+0.3	+25	+2.5	+0.4	+0.1
Acc	41%	45%	69%	47%	47%	49%	37%	38%	37%	29%	32%	29%

**LOT: 26****GLENLEA BOP BOP 1ST (P)****TATTOO: GLE P117E DOB: 13/03/2018**

**COMMENTS:** This one is James Dockrill's pick of the heifers, lovely nature very stylish, her dam is an impressive PINAY daughter selling at LOT 78 and from the same cow family as GOLD STAR FEMALE LOT 2. Sired again by "Grandiose" who's first daughter sold at auction at 12 months of age made \$4250 at the recent Charnelle Invitational Sale. P117 has the pedigree, phenotype and performance to be an elite female in any herd. EBV's are awesome this heifer has massive EMA top 5% of breed and reflects in her actual scans below, top 20% 400 and 600 day weight. Her scan data on the 20/2/19 EMA 90cm<sup>2</sup>, Rump 8mm, IMF% 4.1, weight 461kg

To be A.I. after Easter and run with Homozygous stud sire for 6 weeks, delivery to purchaser mid June or purchaser can take delivery immediately. Full details of offer to A.I. and run with sire see the sale details section at front of catalogue.

View the video of P117 at [www.glenleabeef.com.au](http://www.glenleabeef.com.au)

EC NO DOUBT 2022 P M685500 (OAU Z2022E) (P)

PINAY 8552394134 (OAF U4134F)

**SIRE: LITTLE VALLEY GRANDIOSE (GKB G5E) (P)****DAM: PIPECLAY E3E (ROL E3E)**

LITTLE VALLEY DOLLY (GKB D5E) (P)

PIPECLAY BOP BOP (ROL B2E)

Charolais	March 2019 Australasian Charolais BREEDPLAN Analysis											
	CE Dir	GL	BW	200	400	600	Milk	SS	Carc Wt	EMA	Rump	IMF
EBV	-10.1	-3.3	+1.7	+16	+31	+44	+9	+0.1	+30	+3.4	-0.5	+0.1
Acc	43%	46%	67%	47%	47%	49%	40%	38%	39%	33%	36%	32%

**LOT: 27****GLENLEA NOLANA 106TH (P) (R/F)****TATTOO: GLE P818E DOB: 10/01/2018**

**COMMENTS:** Another heifer that has caught the eye of some good judges, big bodied, extra thickness, this heifer will breed some good bulls! Double polled and light red factor, by the GLENLEA sire "KENWORTH" Homozygous Polled reference and joining sire. Her dam is a powerful Red Factor cow, by French sire Ijoufflu daughter from the Nolana cow family in the GLENLEA herd. EBV's this heifer has added Retail Beef yield putting her in the top 15% of breed, with moderate birth, good growth and excellent EMA putting her in top 25%. Her scan data on 20/2/19 EMA 80cm<sup>2</sup>, Rump 6mm, IMF% 4.9, weight 475kg

To be A.I. after Easter and run with Homozygous stud sire for 6 weeks, delivery to purchaser Mid June or purchaser can take delivery immediately. Full details of offer to A.I. and run with sire see the sale details section at front of catalogue.

View the video of P818 at [www.glenleabeef.com.au](http://www.glenleabeef.com.au)

RANGAN PARK RIO BRAVO D15 (RAN D15E) (P)

IJOUFFLU 6327351004 (OAF N6327F)

**SIRE: GLENLEA KENWORTH (GLE K80E) (P)****DAM: GLENLEA NOLANA 33RD R/F (PS) (GLE C26E) (P/S)**

THW TATT MAC D10E (THW D10E) (P)

GLENLEA NOLANA M30D (GLE M30D) (P/S)

Charolais	March 2019 Australasian Charolais BREEDPLAN Analysis											
	CE Dir	GL	BW	200	400	600	Milk	SS	Carc Wt	EMA	Rump	IMF
EBV	+0.2	-2.1	+0.9	+12	+21	+31	+7	+0.5	+18	+1.9	-0.8	+0.4
Acc	40%	41%	50%	46%	46%	46%	43%	40%	40%	32%	36%	31%

**LOT: 28****GLENLEA GRETEL 2ND (P)****TATTOO: GLE P120E DOB: 19/03/2018**

**COMMENTS:** Stylish made double polled heifer with plenty of body capacity to make a great breeding cow. Dam is a big volumed daughter of the \$16,000 BranchView Forged From Steel (P), selling as Lot 65, his daughters are breeding very well, great doing, thick and soft cows with excellent milk. P120 will have all that and a little bit more. Ebv's have that common story throughout the catalogue of moderate BW, above average Growth and top end carcass traits, these show prospect heifers were to be added to the GLENLEA herd, but here is your opportunity to add them to yours. Her scan data on the 20/2/19 EMA 79cm<sup>2</sup>, Rump 10mm, IMF% 4.2, weight 470kg.

To be A.I. after Easter and run with Homozygous stud sire for 6 weeks, delivery to purchaser mid June or purchaser can take delivery immediately. Full details of offer to A.I. and run with sire see the sale details section at front of catalogue.

View the video of P120 at [www.glenleabeef.com.au](http://www.glenleabeef.com.au)

EC NO DOUBT 2022 P M685500 (OAU Z2022E) (P)

BRANCH VIEW FORDGED FROM STEEL (BVC F34E) (P)

**SIRE: LITTLE VALLEY GRANDIOSE (GKB G5E) (P)****DAM: ORARA WATERFALL GRETEL 1ST (WFA K24E) (P)**

LITTLE VALLEY DOLLY (GKB D5E) (P)

JACKSON GRETEL (MEJ G25E) (P)

Charolais	March 2019 Australasian Charolais BREEDPLAN Analysis											
	CE Dir	GL	BW	200	400	600	Milk	SS	Carc Wt	EMA	Rump	IMF
EBV	-2.8	-2.7	+0.6	+14	+26	+38	+8	+0.9	+22	+2.0	+0.9	+0.3
Acc	39%	43%	68%	45%	45%	47%	35%	32%	34%	26%	29%	26%

**LOT: 29****GLENLEA DREAMTIME 2ND (P)****TATTOO: GLE P110E DOB: 09/03/2018**

**COMMENTS:** Medium frame stylish heifer again this time by Glenlea Jeddi (P) selected for his added muscling and early maturity and used mostly over larger framed females. Dam is a Gobongo Matron Go D154E selling as lot 72. Ebv's once again 400 and 600 day weight top 20% EMA Top 5%. Her scan data on 20/2/19 EMA 84cm<sup>2</sup>, Rump 11mm, IMF% 6.0, Weight 445kg.

To be A.I. after Easter and run with Homozygous stud sire for 6 weeks, delivery to purchaser mid June or purchaser can take delivery immediately. Full details of offer to A.I. and run with sire see the sale details section at front of catalogue.

View the video of P110E at [www.glenleabeef.com.au](http://www.glenleabeef.com.au)

GLENLEA EDDIE (GLE E14E) (P)

GOBONGO VILLEROY V80E (GO V80E)

**SIRE: GLENLEA JEDDI (VLW J15E) (P)****DAM: GOBONGO DREAMTIME D154E (GO D154E)**

FERNVALE BONNY MANDIE (FEN B24E)

NOLLER STONE A122E (JLN A122E)

Charolais	March 2019 Australasian Charolais BREEDPLAN Analysis											
	CE Dir	GL	BW	200	400	600	Milk	SS	Carc Wt	EMA	Rump	IMF
EBV	+4.7	-0.6	+0.8	+14	+27	+39	+9	+0.9	+26	+2.7	-0.9	+0.1
Acc	35%	40%	60%	45%	45%	48%	36%	35%	38%	31%	32%	30%

**LOT: 30****GLENLEA LOLA 1ST (P)****TATTOO: GLE P116E DOB: 13/03/2018**

**COMMENTS:** This heifer is extra thick on a moderate frame, lots of eye appeal and another daughter of Keg on Legs sire, "JEDDI". DAM is a Gobongo Matron selling at lot 68 who is a favourite cow with just that extra substance we like in our cows, P116 has all that and a bit more! EBV's moderate BW with top 30% 400 and 600 day top 5% for EMA and Retail Beef Yield. Scan on 20/2/19 EMA 85cm<sup>2</sup>, Rump 8mm, IMF% 4.5, weight 444kg

To be A.I. after Easter and run with Homozygous stud sire for 6 weeks, delivery to purchaser mid June or purchaser can take delivery immediately. Full details of offer to A.I. and run with sire see the sale details section at front of catalogue.

View the video of P116 at [www.glenleabeef.com.au](http://www.glenleabeef.com.au)

GLENLEA EDDIE (GLE E14E) (P)

FERNVALE BARRISTER (FEN B27E)

**SIRE: GLENLEA JEDDI (VLW J15E) (P)****DAM: GOBONGO LOLA E367E (GO E367E)**

FERNVALE BONNY MANDIE (FEN B24E)

GOBONGO LOLA Z112E (GO Z112E)

Charolais	March 2019 Australasian Charolais BREEDPLAN Analysis											
	CE Dir	GL	BW	200	400	600	Milk	SS	Carc Wt	EMA	Rump	IMF
EBV	+8.0	-1.0	+0.3	+15	+27	+38	+5	+0.7	+27	+2.8	-0.5	+0.1
Acc	36%	40%	67%	46%	47%	50%	37%	35%	38%	31%	32%	30%

**LOT: 31****GLENLEA ELLA 2ND (P)****TATTOO: GLE P108E DOB: 05/03/2018**

**COMMENTS:** Very similar to previous lot with extremely low BW. am sells at Lot 77. Eye appeal and great capacity, will be very good doing type. EBV's are top 1% of breed for direct calving ease and BW, Direct calving ease. top 5% for EMA and Retail Beef Yield, which measures over all muscling. Scans on 20/2/19 EMA 83cm<sup>2</sup>, Rump 8mm, IMF% 2.8, weight 414kg

To be A.I. after Easter and run with Homozygous stud sire for 6 weeks, delivery to purchaser mid June or purchaser can take delivery immediately. Full details of offer to A.I. and run with sire see the sale details section at front of catalogue.

View the video of P108 at [www.glenleabeef.com.au](http://www.glenleabeef.com.au)

GLENLEA EDDIE (GLE E14E) (P)

GLENLEA EDDIE (GLE E14E) (P)

**SIRE: GLENLEA JEDDI (VLW J15E) (P)****DAM: ORARA WATERFALL ELLA 1ST (WFA K31E) (P)**

FERNVALE BONNY MANDIE (FEN B24E)

GOBONGO ELLA E412E (GO E412E)

Charolais	March 2019 Australasian Charolais BREEDPLAN Analysis											
	CE Dir	GL	BW	200	400	600	Milk	SS	Carc Wt	EMA	Rump	IMF
EBV	+16.2	-4.1	-3.1	+9	+17	+20	+10	+1.1	+20	+2.6	-0.3	+0.4
Acc	37%	43%	69%	47%	48%	51%	34%	37%	39%	32%	33%	31%

**LOT: 32****GLENLEA GRETA 3RD (P)****TATTOO: GLE P118E DOB: 14/03/2018**

**COMMENTS:** Another very well put together moderate, thick heifer. Dam is a lovely big soft female sired by Forged from Steel who sells at Lot 57. EBV's well below breed average BW, with good growth and top 10% EMA and Retail Beef Yield%. Scans on 20/2/19 EMA 80cm<sup>2</sup>, Rump 8mm, IMF% 3.8, weight 439kg

To be A.I. after Easter and run with Homozygous stud sire for 6 weeks, delivery to purchaser mid June or purchaser can take delivery immediately. Full details of offer to A.I. and run with sire see the sale details section at front of catalogue.

View the video of P118 at [www.glenleabeef.com.au](http://www.glenleabeef.com.au)

GLENLEA EDDIE (GLE E14E) (P)

BRANCH VIEW FORDGED FROM STEEL (BVC F34E) (P)

**SIRE: GLENLEA JEDDI (VLW J15E) (P)****DAM: ORARA WATERFALL GRETA 1ST (WFA K25E) (P)**

FERNVALE BONNY MANDIE (FEN B24E)

JACKSON GRETA (MEJ G10E) (P)

Charolais	March 2019 Australasian Charolais BREEDPLAN Analysis											
	CE Dir	GL	BW	200	400	600	Milk	SS	Carc Wt	EMA	Rump	IMF
EBV	+6.6	-1.4	+0.4	+14	+28	+38	+8	+1.1	+25	+2.5	-0.5	+0.1
Acc	35%	41%	67%	45%	45%	49%	32%	32%	35%	28%	29%	27%

**LOT: 33****GLENLEA GRACE 2ND (P)****TATTOO: GLE P123E DOB: 12/04/2018**

**COMMENTS:** Strong stylish heifer, this group of heifers we are very proud to have bred. Sired by proven sire "Grandiose" this time, out of a low BW, easy doing, "Forged from Steel daughter" who sells at Lot 92. Ebv's are Low BW, with top 10% EMA. Scans 20/2/19 78cm2, Rump 4mm, IMF% 4.4, weight 430.

To be A.I. after Easter and run with Homozygous stud sire for 6 weeks, delivery to purchaser mid June or purchaser can take delivery immediately. Full details of offer to A.I. and run with sire see the sale details section at front of catalogue.

View the video of P123 at [www.glenleabeef.com.au](http://www.glenleabeef.com.au)

EC NO DOUBT 2022 P M685500 (OAU Z2022E) (P)  
**SIRE: LITTLE VALLEY GRANDIOSE (GKB G5E) (P)**  
 LITTLE VALLEY DOLLY (GKB D5E) (P)

BRANCH VIEW FORDGED FROM STEEL (BVC F34E) (P)  
**DAM: ORARA WATERFALL GRACE 1ST (WFA K27E) (P)**  
 JACKSON GRACE (MEJ G26E) (P)

Charolais	March 2019 Australasian Charolais BREEDPLAN Analysis											
	CE Dir	GL	BW	200	400	600	Milk	SS	Carc Wt	EMA	Rump	IMF
EBV	+0.4	-2.9	-0.1	+12	+24	+35	+10	+0.9	+21	+2.0	+0.7	+0.3
Acc	39%	43%	64%	44%	44%	46%	35%	33%	34%	26%	29%	26%

**LOT: 34****GLENLEA CHAROL 93RD (P)****TATTOO: GLE P124E DOB: 28/04/2018**

**COMMENTS:** Deep soft heifer, big future for this great heifer. Dam is a another deep bodied, easy doing "Forged from Steel" daughter K44, who sells at Lot 80. EBV's once again balanced EBV's. Scans 20/2/19 EMA 70cm2, Rump 7mm, IMF%.

To be A.I. after Easter and run with Homozygous stud sire for 6 weeks, delivery to purchaser mid June or purchaser can take delivery immediately. Full details of offer to A.I. and run with sire see the sale details section at front of catalogue

View the video of P124 at [www.glenleabeef.com.au](http://www.glenleabeef.com.au)

EC NO DOUBT 2022 P M685500 (OAU Z2022E) (P)  
**SIRE: LITTLE VALLEY GRANDIOSE (GKB G5E) (P)**  
 LITTLE VALLEY DOLLY (GKB D5E) (P)

BRANCH VIEW FORDGED FROM STEEL (BVC F34E) (P)  
**DAM: ORARA WATERFALL CHAROL 1ST (WFA K44E) (P)**  
 GLENLEA CHAROL 58TH (GLE G32E) (P)

Charolais	March 2019 Australasian Charolais BREEDPLAN Analysis											
	CE Dir	GL	BW	200	400	600	Milk	SS	Carc Wt	EMA	Rump	IMF
EBV	-5.2	-2.2	+1.2	+13	+25	+39	+9	+1.0	+20	+2.1	+0.3	+0.3
Acc	39%	42%	61%	43%	44%	45%	35%	33%	35%	27%	31%	27%

**LOT: 35****GLENLEA OLIVE 16TH (P)****TATTOO: GLE P111E DOB: 09/03/2018**

**COMMENTS:** Big volumed heifer, moderate frame and early maturing. Dam is a deep bodied moderate cow, easy doing and a great milker that sells at Lot 59. EBV's top 5% direct calving ease and EMA . Top 10% BW and Retail Beef Yield. Scans 20/2/19 EMA 74cm<sup>2</sup>, Rump 6mm, IMF% 5.1, weight 414kg

To be A.I. after Easter and run with Homozygous stud sire for 6 weeks, delivery to purchaser mid June or purchaser can take delivery immediately. Full details of offer to A.I. and run with sire see the sale details section at front of catalogue

View the video of P111 at [www.glenleabeef.com.au](http://www.glenleabeef.com.au)

GLENLEA EDDIE (GLE E14E) (P)

GLENLEA EDDIE (GLE E14E) (P)

**SIRE: GLENLEA JEDDI (VLW J15E) (P)****DAM: GLENLEA OLIVE 10TH (GLE J19E) (P)**

FERNVALE BONNY MANDIE (FEN B24E)

GLENLEA OLIVE B11E (GLE B11E)

Charolais	March 2019 Australasian Charolais BREEDPLAN Analysis											
	CE Dir	GL	BW	200	400	600	Milk	SS	Carc Wt	EMA	Rump	IMF
EBV	+14.1	-2.7	-1.8	+9	+19	+22	+11	+0.8	+22	+3.2	-0.6	+0.3
Acc	37%	44%	70%	48%	49%	52%	34%	37%	39%	31%	32%	30%

**LOT: 36****GLENLEA GEMMA 2ND (P)****TATTOO: GLE P119E DOB: 15/03/2018**

**COMMENTS:** Extra performance in this heifer, light Red Factor and double polled as most of these heifers are with all of them smooth polled. Dam is good thick bodied young cow who sells at Lot 66. Ebv's moderate BW top 15% 600 day weight, top 25% EMA. Scans 20/2/19 EMA 80cm<sup>2</sup>, Rump 7mm, IMF%3.8, weight 470kg.

To be A.I. after Easter and run with Homozygous stud sire for 6 weeks, delivery to purchaser mid June or purchaser can take delivery immediately. Full details of offer to A.I. and run with sire see the sale details section at front of catalogue.

EC NO DOUBT 2022 P M685500 (OAU Z2022E) (P)

ROSEDALE DINGA (MR D25E) (P)

**SIRE: LITTLE VALLEY GRANDIOSE (GKB G5E) (P)****DAM: ORARA WATERFALL GEMMA 1ST (WFA K7E) (P)**

LITTLE VALLEY DOLLY (GKB D5E) (P)

JACKSON GEMMA (MEJ G8E) (P)

Charolais	March 2019 Australasian Charolais BREEDPLAN Analysis											
	CE Dir	GL	BW	200	400	600	Milk	SS	Carc Wt	EMA	Rump	IMF
EBV	-5.0	-2.4	+1.1	+16	+30	+47	+10	+0.7	+28	+2.0	+0.6	+0.0
Acc	39%	44%	68%	46%	46%	48%	34%	33%	35%	28%	32%	27%



**LOT: 37****GLENLEA GLITZ 3RD (P)****TATTOO: GLE P104E DOB: 01/03/2018**

**COMMENTS:** Really thick topped heifer with lots of capacity, one of the bigger framed heifers, Dam had her 2019 calf going missing along the river and is not in the sale, a very good D15E daughter. EBV's top 15% 600 day, Top 10% EMA and Rump Fat. Had highest EMA scans in the group. Scans 20/2/19 EMA 93cm<sup>2</sup>, Rump 6mm, IMF% 2.3, weight 443kg

To be A.I. after Easter and run with Homozygous stud sire for 6 weeks, delivery to purchaser mid June or purchaser can take delivery immediately. Full details of offer to A.I. and run with sire see the sale details section at front of catalogue

EC NO DOUBT 2022 P M685500 (OAU Z2022E) (P)  
**SIRE: LITTLE VALLEY GRANDIOSE (GKB G5E) (P)**  
 LITTLE VALLEY DOLLY (GKB D5E) (P)

RANGAN PARK RIO BRAVO D15 (RAN D15E) (P)  
**DAM: ORARA WATERFALL GLITZ 2ND (WFA K30E) (P)**  
 JACKSON GLITZ (MEJ G9E) (P)

Charolais	March 2019 Australasian Charolais BREEDPLAN Analysis											
	CE Dir	GL	BW	200	400	600	Milk	SS	Carc Wt	EMA	Rump	IMF
EBV	-6.3	-3.5	+1.0	+17	+31	+45	+8	+0.9	+26	+2.5	+1.6	+0.6
Acc	40%	43%	63%	45%	46%	47%	37%	36%	37%	30%	34%	30%

**LOT: 38****GLENLEA MY GIRL 7TH (P)****TATTOO: GLE N81E DOB: 04/11/2017**

**COMMENTS:** Extra soft heifer with highest fat scans of the group, really interesting bloodline, some quality old French genetics in both the Dam and Sire. Double Polled, really early maturing heifer that will become a moderate, easy keeping cow. Ebv's are moderate BW, good growth and top 10% EMA and Top 1% fat cover. Scans 20/2/19 EMA 86cm<sup>2</sup>, Rump 13mm, IMF %4.4, weight 430kg .

To be A.I. after Easter and run with Homozygous stud sire for 6 weeks, delivery to purchaser mid June or purchaser can take delivery immediately. Full details of offer to A.I. and run with sire see the sale details section at front of catalogue.

View the video of N81 at [www.glenleabeef.com.au](http://www.glenleabeef.com.au)

RANGAN PARK RIO BRAVO D15 (RAN D15E) (P)  
**SIRE: GLENLEA KENWORTH (GLE K80E) (P)**  
 THW TATT MAC D10E (THW D10E) (P)

CHAROGAL ECOSSAIS MF0000126 (IAE E6105F)  
**DAM: THW MY GIRL (THW E3E) (P)**  
 MOUNTVIEW MY GIRL (IJB A13E) (P)

Charolais	March 2019 Australasian Charolais BREEDPLAN Analysis											
	CE Dir	GL	BW	200	400	600	Milk	SS	Carc Wt	EMA	Rump	IMF
EBV	+0.8	-4.2	+0.5	+10	+21	+29	+8	+1.4	+15	+2.3	+2.1	+0.8
Acc	39%	45%	60%	47%	46%	47%	40%	38%	39%	31%	32%	30%



# Glenlea Beef Presents:

## 1 FLUSH EACH FROM 8 DONORS

**This sale presented the opportunity to offer a Flush in each of our current Donors. We base our business on Better Value for our clients in the Seedstock industry and this offering of flushes is one of the best value ways we can offer our best genetics.**

### **"DROUGHT BUSTER" SALE OFFERS:**

- Terms are 50% of bid price payable under normal terms to Elders. Balance paid upon production of the required Embryos.
- All flush costs to be paid by purchaser, and all will be done on farm unless overseas purchasers require an export quarantine facility. Costings are approx. \$690 per flush (cost of drugs and technician) on farm plus freezing costs of the embryos. Under quarantine for export \$1400 plus freezing costs of embryos.
- Semen is not included.
- Glenlea guarantee a minimum of 6 frozen embryos from each flush and no upper limit, if you get 15 they are all yours to use or sell. If we have to flush a second time to get the required number Glenlea will pay the costs of extra flush, but semen will not be included. This does not apply to flushes for export.

### **Full access to Glenlea's AI sire battery will be available.**

These include but not limited to:

GLENLEA HONORABLE (P) R/F

JC LANNSIER (P) #

GLENLEA JUST RED (P) R/F

CHALAMBI NORMAN (P) #

GLENLEA KENWORTH (P) #

CHARNELLE LOUIS (P) #

WINN MANS SKAGGS(P)

SILVERSTREAM HOLSTER(P)

CHALAMBI MUSCLES (P) #

FAIRFIELD LETHAL (P) #

FAIRFIELD LONE RANGER (P) #

RANGAN PARK RIO BRAVO D15E (P)

BRANCH VIEW FORGED FROM STEEL (P) R/F

GLENLEA BIG GUN (P) R/F

*Sires marked with a # may be able to be used by natural service to Sire export embryos.*

LOT: 39

# VALLEY VIEW REBBY CIGAR 14TH (AI) (ET) (P)

TATTOO: VLW H14E DOB: 03/09/2012



**COMMENTS:** This Polled cow has bred outstanding progeny to every sire that she has been joined to. Her Dam has 30 registered progeny. Born at "Westbrook" Guyra, Home of GLENLEA for 7 years. H14 was the result of a joint venture program with Valley View in 2012/13. Extra yield, early maturing and very easy doing, always maintains good body condition. Combines perfectly with power bulls such as Impair and Holster.

Calf at foot and ready to flush late May/ early June.

LHD MR PERFECT Y416 M 314744 (OAC J416E) (P)  
**SIRE: LHD CIGAR E46 M434790 (OAU Q46E) (P)**  
 LHD MS CLASSIC BELL X613 F535957 (OAC -613E)

HARVIE JAGER 65J PMC228759 (OAC U8759E) (P)  
**DAM: GOBONGO REBBY D213E (GO D213E) (P)**  
 GOBONGO REBBY W100E (GO W100E)

Charolais CIGAR E46E	March 2019 Australasian Charolais BREEDPLAN Analysis											
	CE Dir	GL	BW	200	400	600	Milk	SS	Carc Wt	EMA	Rump	IMF
EBV	-1.3	-4.8	+0.1	+16	+24	+28	+6	+2.1	+11	+0.4	+0.1	-0.4
Acc	57%	67%	73%	65%	64%	66%	62%	56%	57%	45%	50%	44%



8 month old Holster daughter



Polled Impair daughter Natural calf  
6 months in photo



**COMMENTS:** Polled Red Factor cow actual daughter HOMOZYGOUS DONOR JANET U6. Purchased back in 2017 after spending 10 years in the ALLEDNAW herd. Has always produced outstanding progeny to every sire joined to her. The phenotype is so strong coming through from the heavily French influence sire "WINTON" and U6 herself that progeny have the extra bone, body capacity and carcass that just makes them stand out in the mob. She is 15 this year and is raising a beautiful Red Factor heifer by GLENLEA HONORABLE (P). Photo taken 2 months prior to calving.

Calf at foot and ready to flush late May/ early June.

GAUGUIN 8591105891 (OAF L859F)  
**SIRE: VIOLET HILLS WINTON (VHV W74E)**  
 VIOLET HILLS TABOO (VHV T33E)

GLENLEA MEATBALL (GLE M44E) (P)  
**DAM: GLENLEA JANET U6E R/F (GLE U6E) (P)**  
 GLENLEA JANET N36E (GLE N36E) (P)

Charolais GENET ASSOCIATION	March 2019 Australasian Charolais BREEDPLAN Analysis											
	CE Dir	GL	BW	200	400	600	Milk	SS	Carc Wt	EMA	Rump	IMF
EBV	+0.9	-1.7	-0.1	+7	+15	+17	+4	+0.5	+14	+1.4	-1.0	-0.1
Acc	52%	58%	74%	60%	59%	61%	61%	52%	49%	37%	41%	33%



ET Son of Z8. 7 month old Stud Sire prospect



18 month old daughter



**COMMENTS:** Charol 91st is the biggest bodied, thickest Polled cow in the GLENLEA herd, from the CHAROL Cow family, her Dam B24 by Pagnol was one of our highest performance cows who was in turn from our best cow born in the early 2000's, V9 by Impair who become a foundation cow at ALLEDNAW Stud in Victoria. Perfect udder, feet and temperament. A donor from the moment she hit the ground! EBV's top 2% of breed for 200, 400 growth and EMA. Top 5% for 600 day and carcass wt. Top 15% for Milk and IMF%. Top 20% for Retail Beef Yield. All that performance with a moderate BW of +1.2! Photo taken two weeks after weaning.

Due to calve in July /August to be Flushed in October 2019.

LT RIO BRAVO 3181 P M665507 (OAU Y5507E) (P)

PAGNOL 0310189451 (OAF U9451F)

**SIRE: RANGAN PARK RIO BRAVO D15 (RAN D15E) (P)**

**DAM: GLENLEA CHAROL 33RD B24E (GLE B24E)**

PALGROVE SHOW GIRL 6 (PK P82E) (P)

GLENLEA CAAROL V9E (GLE V9E)

Charolais COW BREEDING	March 2019 Australasian Charolais BREEDPLAN Analysis											
	CE Dir	GL	BW	200	400	600	Milk	SS	Carc Wt	EMA	Rump	IMF
EBV	-3.2	-4.5	+1.2	+21	+42	+54	+11	+1.1	+33	+3.3	+0.3	+0.8
Acc	51%	59%	73%	58%	59%	61%	54%	54%	51%	42%	43%	41%



2018 daughter GLE P1E by JC Lannister P 12 months



CHAROL 91st at 13 months old



**COMMENTS:** Isabella 2nd is a performance cow with that x factor. Dam is the famous Donor Gobongo Isabella D86E, selected as our pick from the Gobongo dispersal in 2011, and sold in 2016 to CHALAMBI Charolais. Several Sons are working stud herds around the country. L22's first daughter was top priced unjoined heifer at the recent CHARNELLE Invitational in QLD sold for \$5250 at 12 months to TAYLOR CHAROLAIS, NOWRA NSW. These Flushes in our donors are the way to get leading genetics into your herd at great value for investment! Deep bodied, extra soft and loads of volume. EBV's Top 10% for Milk, EMA, 400 growth, Rump Fat and IMF%. Top 15% for 600 growth.

Due to calve July/August to be Flushed in October 2019.

LT RIO BRAVO 3181 P M665507 (OAU Y5507E) (P)

HARVIE REDEMPTION 36P MC286641 (OAC Z6641E) (P)

**SIRE: RANGAN PARK RIO BRAVO D15 (RAN D15E) (P) DAM: GOBONGO ISABELLA D86E (GO D86E) (P)**

PALGROVE SHOW GIRL 6 (PK P82E) (P)

GOBONGO ISABELLA (GO T48E)

Charolais GENETICS	March 2019 Australasian Charolais BREEDPLAN Analysis											
	CE Dir	GL	BW	200	400	600	Milk	SS	Carc Wt	EMA	Rump	IMF
EBV	-2.6	-3.6	+0.5	+17	+36	+46	+12	+1.8	+27	+2.4	+1.7	+1.0
Acc	53%	57%	73%	59%	59%	60%	55%	55%	52%	45%	47%	44%



L22 in the paddock



12 month old daughter of GLE L22E

**LOT: 43****CHARNELLE FRIESIA 4 (AI) (ET) (P)**

TATTOO: GKA H34E DOB: 12/08/2012



**COMMENTS:** H34 is HOMOZYGOUS POLLED so all progeny are guaranteed Polled! With a 75% prospect of progeny being Homozygous polled themselves if a polled sire is used. H34 has extra growth while still maintaining softness. Her Dam has produced Stud sires for Palgrove and Rosedale. EBV's at the top of the breed in most traits. All progeny to date have been exceptional sired by PINAY, CML DISTINCTION(P) and GLENLEA HONORABLE(P) R/F. Photo taken 2 months prior to calving.

Will calve prior to sale ready to Flush in June.

WCR SIR FAB MAC 809 M202427 (OAU -57E) (P)

PALGROVE VERTICO (PK V325E)

**SIRE: WCR SIR FA MAC 2244 M234430 (OAU B2244E) (P) DAM: PALGROVE FRIESIA 19 (PK Y224E) (P)**

WCR MISS CENTURY 920 TWN F354249 (OAU -58) (P)

PALGROVE FRIESIA 10 (PK T113E) (P)

Charolais CATTLE ASSOCIATION	March 2019 Australasian Charolais BREEDPLAN Analysis											
	CE Dir	GL	BW	200	400	600	Milk	SS	Carc Wt	EMA	Rump	IMF
EBV	-3.3	-3.8	+1.5	+16	+33	+56	+6	+1.1	+24	+2.4	+1.8	+1.1
Acc	61%	70%	70%	67%	66%	66%	69%	63%	61%	55%	56%	53%



Pinay daughter - 15 months old



Daughter by Distinction 14 months old



**COMMENTS:** Another from our JV in 2012/13. Red Smoke X Fernvale Chiffon. Early maturing, moderate Framed and thick as a brick with such a feminine front end. Outstanding progeny by Yellowstone and Glenlea Honorable (P) R/F. Carcass EBV's are top 5% for EMA and top 1% for Fat cover! Photo taken 2 months prior to calving.

Be ready to Flush in June.

TR SMOKEONTHEWATER ET M690545 (PED -545E)  
**SIRE: TR RED SMOKE M723761 (OAU B6641E) (P)**  
 THOMAS MS ADVANTAGE 2621 F959316 (PED -9316E)

FERNVALE RIPPER (FEN R1E)  
**DAM: FERNVALE CHIFFON (FEN C22E)**  
 FERNVALE PRIMADONNA (FEN P28E)

Charolais	March 2019 Australasian Charolais BREEDPLAN Analysis											
	CE Dir	GL	BW	200	400	600	Milk	SS	Carc Wt	EMA	Rump	IMF
EBV	+4.6	-2.8	-0.7	+14	+21	+31	+7	+1.8	+17	+2.5	+3.1	+0.0
Acc	51%	58%	62%	57%	57%	58%	52%	51%	50%	39%	45%	39%



2017 Daughter



Son by Glenlea Honorable 4 months old





**COMMENTS:** One of the quietest cows in the stud herd. Hugh milker and softness to rival a British breed cow! With very Low BW. Maternal half sister to Lot 39, full brother was a stud sire for Valley View. Has produced an excellent polled daughter to Tattenhall Impecable and a Bull by Glenlea Honorable (P) R/F. Will combine with the most powerful bulls in the breed in an ideal type cross to produce sale topping progeny. Top 5% BW, IMF% and Milk, Top 10% GL, Top 25% Direct CE, 400 and 600 day weight. Photo taken 2 month prior to calving.

Calf at foot, ready to Flush late May/ early June.

LT RIO BLANCO 1234 P M620591 (OAU W591E) (P)

HARVIE JAGER 65J PMC228759 (OAC U8759E) (P)

**SIRE: LT RIO BRAVO 3181 P M665507 (OAU Y5507E) (P) DAM: GOBONGO REBBY D213E (GO D213E) (P)**

LT 7N OF DUKE 9083 PLD F852553 (OAU U2553E) (P)

GOBONGO REBBY W100E (GO W100E)

March 2019 Australasian Charolais BREEDPLAN Analysis												
Charolais	CE Dir	GL	BW	200	400	600	Milk	SS	Carc Wt	EMA	Rump	IMF
EBV	+6.7	-5.0	-2.0	+15	+29	+40	+9	+2.2	+23	+1.8	+2.1	+1.2
Acc	57%	68%	72%	65%	64%	66%	61%	57%	57%	48%	52%	48%



2016 Daughter



Daughter by Tattenhall Impecable 13 months old



**COMMENTS:** Maximum performance genetics here, Polled Half French female from the Palgrove Estella cow family. Big, deep, perfect wedge shape, high pelvic area, and still so smooth through the front end, massive milker, she could go into the diary. Progeny to date have been outstanding with her first heifer sold privately, her second retained and next two stud sire bull calves, with her 2018 bull by HOMO POLLED and HOMO RED SIRE, GLENLEA JUST RED (P) R/F a very special calf! EBV's Top 1% of breed for Milk, Top 5% for carcass wt, 200, 400 and 600 day weight, Top 10% for EMA and Retail beef Yield and still with sensible BW. Photo taken 1 week before weaning her 400kg P41 bull calf in inset photo at 8 months.

Calving August to be Flushed in October 2019.

BLASON 4286100325 286100325 (PED X286F)  
**SIRE: IMPAIR 1893102983 (OAF N189F)**  
 OFFICINE (PED -945F)

BR DUKE 261 M246564 (OAU C261E) (P)  
**DAM: PALGROVE ESTELLA 214 (PK A416E) (P)**  
 PALGROVE ESTELLA 73 (PK S201E)

Charolais	March 2019 Australasian Charolais BREEDPLAN Analysis											
	CE Dir	GL	BW	200	400	600	Milk	SS	Carc Wt	EMA	Rump	IMF
EBV	+2.2	-3.5	+1.5	+19	+38	+57	+19	+0.2	+33	+2.4	-1.4	+0.2
Acc	59%	62%	73%	63%	62%	63%	62%	57%	57%	51%	52%	48%



P41 sire prospect 2018 calf



GLENLEA NERO (P) R/F 2017 SON  
 BY GLENLEA HONORABLE (P) R/F

## Glenlea Beef Presents:

# 38 AUTUMN COWS WITH CALVES AT FOOT

This is a magnificent mob of Charolais females, calves at foot by 3 Proven sires GLENLEA HONORABLE (P) R/F, CHARNELLE LOUIS (P) and PARINGA HOWLER (P), the last two are HOMOZYGOUS POLLED. Very tight calving pattern and stud sire prospects, stud heifer sires and show prospect heifers are scattered throughout this offering.

All bar one or two lots have video available on our website ([www.glenleabeef.com.au](http://www.glenleabeef.com.au)) and YOU TUBE, these videos represent the females and I encourage you to view at them all, INCLUDING SEVERAL GOLD STAR FEMALES.

### "DROUGHT BUSTER" SALE OFFERS:

- 50% of sale price paid under normal Elders terms, balance due in 6 months with no interest. TAP (This must be arrange direct with vendor prior to auction.)
- To be A.I. after Easter and then paddocked with CHALAMBI NORMAN (P) HOMOZYGOUS POLLED JOINING SIRE for 6 weeks until mid JUNE at which time delivery will take place. There will be NO agistment charged during this period.
- The cost of running the A.I. Program, the drugs and technician, will be \$200 per head plus GST.
- Semen will be additional cost or purchaser can supply their own.
- When the bull comes out, they can remain on agistment at Waterfall by arrangement for an extended period at \$12 + gst, per week, on high value grass.

### TESTIMONIAL FROM LACHLAN DICKSON, CHELBROOK CHAROLAIS, EMERALD QLD

*I purchased a number of the top females at Glenlea's 2017 female sale after inspecting the outstanding herd at the open weekend prior to the sale. My purchases have adapted very well to the conditions in Central Queensland and have produced outstanding progeny with high end bulls and replacement heifers including a stud sire being retained...Roderick really helped me out when we lost one of the cows months later with providing all the info to the insurance company and has contributed regularly with ongoing advice on breeding, sire selection and marketing my cattle.*



Roderick Binny and Lachlan Dickson

### TESTIMONIAL FROM SAM EDWARDS, IMPERIAL PARTNERS, SA



Sam Edwards

*Josh and myself, Sam Edwards from Imperial Partners, S.A. purchased a number of heifers from Glenlea's 2017 sale (one of the calves from those heifers is pictured) after extensive discussions with Roderick about various lots....his critical assessment of the lots we were interested in was invaluable in making purchase selections. Delivery was well managed and the Glenlea cattle fitted into our herd straight away...great temperament ....first progeny made our show team and we wouldn't hesitate to make further purchases of Glenlea Bloodlines.*

**LOT: 47****GLENLEA CHAROL 72ND (P)****TATTOO: GLE J8E DOB: 02/03/2013**View the video of J8E and Q19 at [www.glenleabeef.com.au](http://www.glenleabeef.com.au)

**COMMENTS:** Every few years we have that exceptional female enter the herd, one that stands out in a mob of great females, CHAROL 72nd is one like that, her photo is on the front cover! Perfect structure, body shape, strong polled head, excellent udder, 40 year history in her cow family and eye appeal that is hard to put into words but we all know it (as seedstock producers) when we see it. Dam sold for \$8000 in 2017 to Chelbrook Charolais, Emerald QLD. Four progeny to date, everyone born earlier than the last, her 2019 heifer calf was almost 5 weeks earlier than her 2018 calf! Outstanding daughter at Lot 83, one of the top "M" drop females. Her 2017 bull, "NORTH" sired by "GLENLEA HILTON", was the lead bull in his group and is working at Scott Beaumont's, Shandon stud at Dorrigo and we are negotiating to sell semen from him internationally! CHAROL 72nd EBV's are top 15% 600 day growth and Retail Beef Yield. We have catalogued these Autumn calver's in basically calf born order, with no other consideration, however we started with Charol 72nd.

Polled heifer calf Q19 by "HOWLER" born 8/2/19. 75% chance calf is Homozygous polled.

PARINGA NOVOTEL A100 (TOLA100E) (P)

GLENLEA BIG GUN (GLE B10E) (P)

**SIRE: ROSEDALE DINGA (MR D25E) (P)**

**DAM: GLENLEA CAAROL 42ND F37 (GLE F37E) (P)**

ROSEDALE WALLAH Z27 (MR Z27E)

GLENLEA CAAROL W8E (GLE W8E)

Charolais	March 2019 Australasian Charolais BREEDPLAN Analysis											
	CE Dir	GL	BW	200	400	600	Milk	SS	Carc Wt	EMA	Rump	IMF
EBV	+1.3	-2.7	+0.4	+16	+27	+47	+9	+1.7	+25	+1.3	-0.8	-0.1
Acc	46%	50%	61%	51%	52%	53%	40%	43%	44%	38%	42%	37%



CAF Q19



LAST YEARS CALF GLE P112E

LOT: 48

GLENLEA ISABELLA 1ST (P) (R/F)

TATTOO: GLE K60E DOB: 07/09/2014



**COMMENTS:** Exceptional bloodlines, exceptional production, double polled and Red Factor! Isabella 1st was born, grown and joined in drought, calved as a 2 year old, came forward 4.5 weeks in calving interval for her second calf and then was moved to the Coast and had to adapt to a very different environment when purchased out of our 2017 sale by Waterfall. Her first calf is a now a sire for Taylor Charolais, Nowra NSW. Her second calf is a feature joined heifer in this sale at Lot 100 and her current calf is a SPECIAL, double polled, double red bull sired by "HONORABLE". Her dam has 23 registered progeny and a full sister is in our DONOR herd and a flush in her sells at Lot 42. An easy decision to give this young cow GOLD STAR STATUS. EBV's have low BW, good growth, and top 10% EMA, Rump Fat and IMF%. As with 13 other (all the cows with "Honorable" calves) of these Autumn cows that previously calved in Spring, Isabella was with a sire for spring 2017 joining who was infertile and only got 1 calf out of 28 in his joining group, this wasn't discovered until pregnancy testing in late February 2018 the best of these females was then put with "Honorable" for 6 weeks from April 10th 2018 and all calved, almost all in 4 weeks. Isabella was the first to calve, 7 days in front of the next one! Double Polled, Red Factor bull calf Q6 by "HONORABLE" born 21/1/19.

LT RIO BRAVO 3181 P M665507 (OAU Y5507E) (P)

HARVIE REDEMPTION 36P MC286641 (OAC Z6641E) (P)

**SIRE: RANGAN PARK RIO BRAVO D15 (RAN D15E) (P) DAM: GOBONGO ISABELLA D86E (GO D86E) (P)**

PALGROVE SHOW GIRL 6 (PK P82E) (P)

GOBONGO ISABELLA (GO T48E)

Charolais	March 2019 Australasian Charolais BREEDPLAN Analysis											
	CE Dir	GL	BW	200	400	600	Milk	SS	Carc Wt	EMA	Rump	IMF
EBV	-0.3	-3.7	-0.2	+13	+31	+38	+12	+1.7	+24	+2.4	+1.8	+1.0
Acc	54%	59%	74%	65%	62%	63%	55%	55%	53%	45%	47%	44%



CAF Q6



K60's second calf Lot 100 - joined heifer WFA N52E

LOT: 49

# GLENLEA CONFIDENCE 10TH (AI) (ET) (P) (R/F)

TATTOO: GLE H104E DOB: 09/02/2012



View the video of H104 and Q7 at [www.glenleabeef.com.au](http://www.glenleabeef.com.au)

**COMMENTS:** Another great double polled red factor cow and outstanding calf. Many judges would give her GOLD STAR STATUS. Dam is the great Gobongo Confidence cow C13E, also the dam of LOT 13. Her sire LT Easy Blend we rate as one of the best imports from the USA. EBV's show top 15% 600 day growth and Rump Fat.

Soft, deep and thick, perfect udder, and a powerful "HONORABLE" daughter at foot 75% chance Homozygous polled.

Polled heifer calf Q7 by "HONORABLE" born 28/1/19

LT UNLIMITED EASE 9108 M301930 (OAU J9108E)

ADVANCE XR8 (ADV X50E)

**SIRE: LT EASY BLEND 5125 PLD M705113 (OAU A5113E) (P) DAM: GOBONGO CONFIDENCE C13E (GO C13E) (P)**

LT BRENDA 1014 PLD F924572 (PED -4572E)

FREDERIC CONFIDENCE L9E (PBS L9E) (P)

Charolais	March 2019 Australasian Charolais BREEDPLAN Analysis											
	CE Dir	GL	BW	200	400	600	Milk	SS	Carc Wt	EMA	Rump	IMF
EBV	-0.3	-3.1	+0.2	+16	+35	+45	+6	+0.9	+25	-0.3	+1.4	+0.6
Acc	54%	58%	73%	65%	67%	65%	57%	59%	60%	55%	63%	53%



CAF Q7



View the video of E2 and Q8 at [www.glenleabeef.com.au](http://www.glenleabeef.com.au)

**COMMENTS:** Beautiful cow, great skin and hair for a French bloodline female. Very sound and great Temperament, lots of production in her yet. EBV's top 1% of breed for EMA and Retail Beef Yield! Sire is bred Legend French sire PINAY. A daughter, joined yearling heifer sells at Lot 110.

Polled bull calf at foot Q8, by "Honorable" Born 28/1/19

IMPAIR 1893102983 (OAF N189F)

**SIRE: PINAY 8552394134 (OAF U4134F)**

MARY 8596100049 (OAF R8596F)

SEAWELL OFFSHORE MF0084446 (OAE T5813F)

**DAM: COBRABALD OFFSHORE X85 (ASH X85E)**

ROSDALE ROSLYN U78E (MR U78E)



March 2019 Australasian Charolais BREEDPLAN Analysis

	CE Dir	GL	BW	200	400	600	Milk	SS	Carc Wt	EMA	Rump	IMF
EBV	-8.6	-4.5	+1.3	+14	+25	+37	+10	+0.2	+25	+3.5	-1.7	+0.3
Acc	57%	71%	67%	59%	60%	61%	57%	57%	55%	50%	54%	49%



CAF Q8



Yearling daughter - Lot 110

LOT: 51

GLENLEA NOLANA 72ND (AI) (P/S) (R/F)

TATTOO: GLE H33E DOB: 07/09/2012



View the video of H33 and Q9 at [www.glenleabeef.com.au](http://www.glenleabeef.com.au)

**COMMENTS:** Another great medium framed Poll/scur Red Factor GLENLEA cow. Sired by American Full French bull, MOGO. From the NOLANA cow family, Dam is still in the herd at 12 years of age raising her 2018 drop calf. Thick, moderate easy doing with great muzzle and strong head. EBV's are balanced across all traits and she was an ideal cow to join to the powerful "Honorable" and the heifer calf is very special, photo doesn't do her justice.

Double Polled Red Factor Heifer Q9 by "HONORABLE" Born 28/1/19

HAMM CHARBONEAU 2N FFM670371 (PED -371F)

**SIRE: HAMM MOGO U23 FFM754943 (OAU D4943F)**

MOGO 2003 0094 FFF986854 (PED -6854F)

MYALL YAMMA (MY Y3E)

**DAM: GLENLEA NOLANA 33RD (GLE C66E) (P)**

GLENLEA NOLANA M30D (GLE M30D) (P/S)



March 2019 Australasian Charolais BREEDPLAN Analysis

	CE Dir	GL	BW	200	400	600	Milk	SS	Carc Wt	EMA	Rump	IMF
EBV	-6.2	+0.7	+1.5	+7	+15	+23	+4	+0.2	+13	+1.2	-0.1	+0.4
Acc	41%	70%	71%	51%	50%	51%	40%	44%	37%	26%	28%	25%



CAF Q9



Yearling Son



LOT: 52

VALLEY VIEW MISS ESTELLA (P) (R/F)

TATTOO: VLW G58E DOB: 29/08/2011



View the video of G58 and Q10 at [www.glenleabeef.com.au](http://www.glenleabeef.com.au)

**COMMENTS:** These top class Red Factor cows just keep coming! This one by Sydney Supreme Champion Bull and Horden Trophy winner in 2010, DEE V8 (P). Dam is from the Estella cow family at Palgrove. Deep bodied, great udder, strong phenotype with great head and muzzle. EBV's Top 1% for Retail Beef yield, Top 5% for EMA, top 15% for calving ease and Gestation Length. And you can see those carcass traits reflected in her special "Honorable" calf.

Double Polled Red Factor heifer calf, Q10 By "Honorable" Born 30/1/19

IMPAIR 1893102983 (OAF N189F)  
**SIRE: THW DEE V8 (THW D19E) (P/S)**  
ADVANCE FRIESIA Z56 (ADV Z56E) (P)

LHD MR PERFECT Y416 M 314744 (OAC J416E) (P)  
**DAM: VALLEY VIEW C004 ESTELLA 145 (VLW C4E) (P)**  
PALGROVE ESTELLA 145 (PK X25E)

March 2019 Australasian Charolais BREEDPLAN Analysis													
Charolais	CE Dir	GL	BW	200	400	600	Milk	SS	Carc Wt	EMA	Rib	Rump	IMF
EBV	+7.3	-5.1	-0.5	+15	+24	+31	+12	+0.0	+25	+2.8	-0.6	-1.0	-0.5
Acc	48%	54%	71%	59%	58%	60%	45%	46%	48%	38%	43%	42%	36%



CAF Q10

**LOT: 53****ORARA WATERFALL ESTELLA 3 (P)****TATTOO:** WFA K2E **DOB:** 02/02/2014View the video of K2 and Q11 at [www.glenleabeef.com.au](http://www.glenleabeef.com.au)

**COMMENTS:** Another outstanding Moderate framed Red Factor cow. Smooth, deep, thick and soft, real easy doing young cow. Sire is the great breeding bull "DINGA" Senior Champion Sydney Royal 2010, and low BW, big milking daughters and sons with thickness and softness that are easy to sell into cross breeding programs. her Dam is the previous lot! Outstanding young cow! EBV's Top 1% Retail Beef Yield, Top 5% Milk and EMA with top 10% direct calving ease. Highly desirable spread of traits. What a calf at foot!

Double Polled bull calf, Q11 by "HONORABLE" Born 31/1/19

PARINGA NOVOTEL A100 (TOL A100E) (P)

**SIRE: ROSEDALE DINGA (MR D25E) (P)**

ROSEDALE WALLAH Z27 (MR Z27E)

THW DEE V8 (THW D19E) (P/S)

**DAM: VALLEY VIEW MISS ESTELLA (VLW G58E) (P)**

VALLEY VIEW C004 ESTELLA 145 (VLW C4E) (P)

**March 2019 Australasian Charolais BREEDPLAN Analysis**

	CE Dir	GL	BW	200	400	600	Milk	SS	Carc Wt	EMA	Rump	IMF
EBV	+10.5	-3.9	-0.6	+17	+28	+40	+14	+0.5	+33	+3.0	-1.5	-1.0
Acc	42%	50%	70%	57%	58%	65%	39%	43%	51%	41%	54%	42%



CAF Q11



Yearling Son

LOT: 54

ORARA WATERFALL KATIE (P)

TATTOO: WFA K85E DOB: 21/11/2014



View the video of K85 and Q12 at [www.glenleabeef.com.au](http://www.glenleabeef.com.au)

**COMMENTS:** Very neat easy doing young cow. More moderate framed than most in the sale but has an outstanding calf that she is doing a fantastic job on. Broad muzzle very correct. Ebv's top 10% EMA with all positive carcass traits, top 20% direct calving ease and low BW.

Double Polled Bull calf Q12 By, "HONORABLE" Born 31/1/19

LT BLUEGRASS 4017P M686569 (OAU Z4017E) (P)  
**SIRE: GLENLEA EDDIE (GLE E14E) (P)**  
GLENLEA NOLANA 29TH (GLE C15E)

PALGROVE VALIANT (PK V167E)  
**DAM: MYALL ASIA (MY A5142E) (P)**  
MYALL P263D (MY P263D)



March 2019 Australasian Charolais BREEDPLAN Analysis

	CE Dir	GL	BW	200	400	600	Milk	SS	Carc Wt	EMA	Rump	IMF
EBV	+6.4	-1.9	-0.5	+11	+20	+26	+9	+1.0	+18	+2.5	+0.2	+0.7
Acc	41%	47%	54%	50%	51%	53%	42%	47%	45%	36%	37%	35%



CAF Q12



View the video of K20 and Q13 at [www.glenleabeef.com.au](http://www.glenleabeef.com.au)

**COMMENTS:** Another outstanding thick bodied Red Factor cow, you rarely see quality young cows like these except in dispersals. Sired this time by "Forged from Steel" his daughters are producing so well that we are going to use him again by A.I. this year. Dam is a herd matron still producing in another JV herd near Grafton for GLENLEA. EBV's will improve as more progeny data is submitted for analysis, Showing all very positive carcass traits. Calf at foot has performance and thickness in spades! A very nice joined yearling heifer sells at Lot 103 out of this cow.

Polled Red Factor bull calf Q13 by "Honorable" Born 31/1/19

HARVIE JAGER 65J PMC228759 (OAC U8759E) (P)

ROSEDALE AXLE (MR A104E) (P)

**SIRE: BRANCH VIEW FORDGED FROM STEEL (BVC F34E) (P)**

**DAM: JACKSON ELLEN (MEJ E24E) (P)**

BRANCH VIEW XQUISITE Z47E (BVC Z47E)

VEEJAY DOWNS NOUGAT X24E (VJ X24E) (P)

Charolais	March 2019 Australasian Charolais BREEDPLAN Analysis											
	CE Dir	GL	BW	200	400	600	Milk	SS	Carc Wt	EMA	Rump	IMF
EBV	+3.8	-2.7	-0.6	+8	+16	+17	+4	+1.3	+10	+1.3	+0.9	+0.4
Acc	43%	47%	60%	50%	49%	51%	43%	39%	41%	31%	38%	30%



CAF Q13



Yearling daughter - Lot 103

LOT: 56

PIPECLAY E1E (AI)

TATTOO: ROL E1E DOB: 13/08/2009



View the video of E1 and Q14 at [www.glenleabeef.com.au](http://www.glenleabeef.com.au)

**COMMENTS:** Classic PINAY daughter deep, powerful really strong phenotype. This sort of cow has several more calves in her yet! Dam was a high selling cow from W.A and EBV's show that PINAY influence of top 1% Retail Beef Yield and top 10% EMA. We missed this heifer getting photos but you can see her on the video of this lot, very Low BW heifer that will grow out into a great cow like her mum.

Polled Heifer calf at foot Q14 by, "HOWLER" Born 3/2/19

IMPAIR 1893102983 (OAF N189F)

**SIRE: PINAY 8552394134 (OAF U4134F)**

MARY 8596100049 (OAF R8596F)

GARTONGRANGE BEAM MFETP0014067 (IAE F8601F) (P)

**DAM: BLAWEARY XTAVAGANT (BLO X3E)**

BLAWEARY OPAQUE FM160 (BLO P2E) (P)

March 2019 Australasian Charolais BREEDPLAN Analysis												
Charolais	CE Dir	GL	BW	200	400	600	Milk	SS	Carc Wt	EMA	Rump	IMF
EBV	+4.9	-5.0	+0.0	+8	+19	+26	+8	+0.2	+22	+3.0	-1.4	+0.2
Acc	55%	71%	62%	57%	56%	57%	57%	54%	53%	48%	50%	47%

CALF PHOTO SALE DAY



LAST YEARS CALF GLE P122E

LOT: 57

ORARA WATERFALL GRETA 1ST (P)

TATTOO: WFA K25E DOB: 21/06/2014



View the video of K25 and Q15 at [www.glenleabeef.com.au](http://www.glenleabeef.com.au)

**COMMENTS:** Big deep soft young cow, a real standout! Another "Forged from Steel" X with Jackson Matron, same as Lot 55 and what a pair of cows they would be at your place! A show prospect heifer sells at Lot 32. Check out the video or better yet, fly or drive to inspect in person on the 13th and 14th April.

Polled bull calf at foot Q15 by "LOUIS" 75% chance Homozygous Polled. Born 3/2/19

HARVIE JAGER 65J PMC228759 (OAC U8759E) (P)

**SIRE: BRANCH VIEW FORDGED FROM STEEL (BVC F34E) (P)**

BRANCH VIEW XQUISITE Z47E (BVC Z47E)

ROSEDALE DINGA (MR D25E) (P)

**DAM: JACKSON GRETA (MEJ G10E) (P)**

JACKSON COUNTESS (MEJ C233E) (P)



March 2019 Australasian Charolais BREEDPLAN Analysis

	CE Dir	GL	BW	200	400	600	Milk	SS	Carc Wt	EMA	Rump	IMF
EBV	+8.7	-2.0	-0.5	+12	+25	+34	+9	+1.5	+22	+1.5	-0.6	+0.0
Acc	43%	50%	69%	51%	50%	52%	42%	39%	39%	28%	31%	28%



CAF Q15



Last year's calf - Lot 32



View the video of J24 and Q16 at [www.glenleabeef.com.au](http://www.glenleabeef.com.au)

**COMMENTS:** Powerful polled cow, another "DINGA" from the powerful ELSA cow family with nearly 40 years of history at GLENLEA. Added overall muscling, and phenotypic strength, great head and muzzle, so close to giving this young cow a GOLD STAR RATING. Dam was a daughter of the \$20,000 Violet Hills Zachariah (P) with over 200 registered progeny and trait leader for 200 day weight, J24 has also inherited "ZACH's" exceptionally gentle temperament. Extra powerful bull calf at foot, could be a stud sire prospect!

Double Polled Red Factor Bull calf at foot Q16 by "HONORABLE" Born 3/2/19

PARINGA NOVOTEL A100 (TOL A100E) (P)  
**SIRE: ROSEDALE DINGA (MR D25E) (P)**  
 ROSEDALE WALLAH Z27 (MR Z27E)

VIOLET HILLS ZACHARIAH (VHV Z80E) (P)  
**DAM: GLENLEA ELSA 44TH (GLE F26E) (P)**  
 JUNCTION FARM XTRA SPECIAL (JFB X1E) (P)

March 2019 Australasian Charolais BREEDPLAN Analysis												
Charolais	CE Dir	GL	BW	200	400	600	Milk	SS	Carc Wt	EMA	Rump	IMF
EBV	+8.2	-2.9	-0.5	+12	+22	+34	+6	+0.4	+21	+0.7	-0.6	-0.2
Acc	44%	49%	58%	49%	49%	52%	41%	42%	43%	36%	42%	35%



CAF Q16



Yearling Daughter - Lot 101



View the video of J19 and Q20 at [www.glenleabeef.com.au](http://www.glenleabeef.com.au)

**COMMENTS:** Another exceptional deep, soft young cow. Such a gentle nature, her sire GLENLEA EDDIE(P) top priced bull at our 2011 sale has produced early maturing, extra thick progeny with low BW, and J19 is no exception. Her Dam goes back to the famous Rosedale OLIVE cow family and was sired by French bull Pagnol who left some great progeny in the Glenlea Herd. Lovely inquisitive heifer calf at foot that was always coming up to see what we doing when taking catalogue photos. EBV's top 5% direct calving ease, this measure's calving ease based on reported calving's. eg unassisted or assisted and to what level of assistance NOT ONE COW IN THIS SALE, BOTH SPRING AND AUTUMN DROP WAS ASSISITED AT CALVING! Retail Beef Yield, top 10% is a measurement derived from the EMA and Rib and RUMP FAT measurements that expresses the overall muscling of the animal, not just the loin where the ribeye muscle is measured. A show prospect daughter of this cow sells at LOT 35. Polled heifer calf at foot Q20, by "Howler" 75% chance calf is HOMOZYGOUS POLLED. Born 9/2/19

LT BLUEGRASS 4017P M686569 (OAU Z4017E) (P)

PAGNOL 0310189451 (OAF U9451F)

**SIRE: GLENLEA EDDIE (GLE E14E) (P)**

**DAM: GLENLEA OLIVE B11E (GLE B11E)**

GLENLEA NOLANA 29TH (GLE C15E)

GLENLEA OLIVE W6E (GLE W6E)

Charolais	March 2019 Australasian Charolais BREEDPLAN Analysis											
	CE Dir	GL	BW	200	400	600	Milk	SS	Carc Wt	EMA	Rump	IMF
EBV	+10.1	-2.7	-0.8	+10	+21	+24	+10	+0.9	+21	+2.9	-0.9	+0.4
Acc	45%	56%	72%	54%	55%	58%	45%	49%	45%	35%	36%	33%



CAF Q20



Last years calf - Lot 35



LOT: 60

# GLENLEA JANET 71ST (P)

TATTOO: GLE J16E DOB: 16/03/2013



View the video of J16 and Q21 at [www.glenleabeef.com.au](http://www.glenleabeef.com.au)

**COMMENTS:** Lovely big long cow, loads of capacity, strong polled head and jaw with very fine hair coat, great capacity udder so well structured and perfect teats. Sired again by leading sire RAN D15E and her DAM was a great polled Ijoufflu X JANET another prolific cow family at GLENLEA with 40 years of history! EBV's are top 10% for milk and EMA with all positive carcass traits. Top 20% 600 growth. special fine coated polled bull calf at foot. her last year's heifer calf was horned so was not included in the show prospect heifers.

Polled bull calf at foot by "HOWLER" 75% chance Homozygous Polled. Born 6/2/19

LT RIO BRAVO 3181 P M665507 (OAU Y5507E) (P)

IJOUFFLU 6327351004 (OAF N6327F)

**SIRE: RANGAN PARK RIO BRAVO D15 (RAN D15E) (P) DAM: GLENLEA JANET 26TH R/F (PS) (GLE C8E) (P)**

PALGROVE SHOW GIRL 6 (PK P82E) (P)

GLENLEA JANET S7E R/F (GLE S7E) (P)

March 2019 Australasian Charolais BREEDPLAN Analysis												
Charolais	CE Dir	GL	BW	200	400	600	Milk	SS	Carc Wt	EMA	Rump	IMF
EBV	-2.4	-5.2	+0.3	+17	+32	+44	+12	+1.0	+26	+2.5	+0.6	+0.8
Acc	55%	60%	74%	61%	61%	62%	56%	54%	53%	45%	47%	43%



CAF Q21

**LOT: 61****GLENLEA CHAROL 78TH (P) (R/F)****TATTOO: GLE J15E DOB: 15/03/2013**

[View the video of J15 and Q22 at www.glenleabeef.com.au](http://www.glenleabeef.com.au)

**COMMENTS:** Red Factor, Polled GLENLEA cow with some extra frame. Perfect udder and great milker. J15 is a very eye appealing RAN D15E daughter who is a current trait leader for all growth traits, in addition to milk and when accuracy just climbs a little more will be a trait leader in all carcass traits as well, high performance achievement very few bulls can match that record, over 250 registered progeny, GLENLEA bought the bull as a 4 year old and used him heavily for several years and he is a bull we will use again in future. From the Charol/Caaryl cow family another prolific cow family at GLENLEA with almost 40 Year history with many outstanding individuals including J15. EBV's are very well balanced better than average in almost every trait. 2017 daughter was sold to new start a new stud for \$5000 and her 2018 bull is a lead bull in our bull paddock this year. A special red factor polled heifer calf at foot. Double Polled Red Factor heifer calf at foot Q22 by "Honorable" Born 8/2/19

LT RIO BRAVO 3181 P M665507 (OAU Y5507E) (P)

MEDBURN ZEBRA Z10E (DWH Z10E)

**SIRE: RANGAN PARK RIO BRAVO D15 (RAN D15E) (P) DAM: GLENLEA CAAROL 38TH R/F (PS) (GLE C51E) (P/S)**

PALGROVE SHOW GIRL 6 (PK P82E) (P)

GLENLEA CAAROL N48E (GLE N48E) (P)

Charolais	March 2019 Australasian Charolais BREEDPLAN Analysis											
	CE Dir	GL	BW	200	400	600	Milk	SS	Carc Wt	EMA	Rump	IMF
EBV	+2.1	-3.5	-0.8	+10	+22	+26	+13	+1.2	+17	+1.7	+1.3	+1.1
Acc	51%	54%	73%	59%	61%	61%	53%	51%	52%	41%	44%	41%



CAF Q22



LAST YEARS CALF GLE P105E



**COMMENTS:** Really well grown polled first calver, was at anther property until just before calving, great udder and teats, by proven sire "Grandiose" from the "CAAROL /CHAROL cow family. Well muscled, growthy bull calf at foot. that will be a lead sale bull, showing the extra grunt that the "Muscles" calves have.

Polled bull calf at foot Q23 by CHALAMBI MUSCLES (P) Born 6/2/19 75% chance Homozygous Polled.

EC NO DOUBT 2022 P M685500 (OAU Z2022E) (P)  
**SIRE: LITTLE VALLEY GRANDIOSE (GKB G5E) (P)**  
 LITTLE VALLEY DOLLY (GKB D5E) (P)

CRATHES DR. IMPECCABLE (KRG D21F)  
**DAM: GLENLEA CHAROL 58TH (GLE G32E) (P)**  
 GLENLEA CAAROL W8E (GLE W8E)

Charolais	March 2019 Australasian Charolais BREEDPLAN Analysis											
	CE Dir	GL	BW	200	400	600	Milk	SS	Carc Wt	EMA	Rump	IMF
EBV	-11.5	-1.4	+2.3	+15	+26	+44	+9	+1.0	+20	+1.9	+0.1	+0.4
Acc	41%	43%	66%	47%	48%	49%	37%	36%	39%	32%	37%	30%



CAF Q23



View the video of K34 and Q24 at [www.glenleabeef.com.au](http://www.glenleabeef.com.au)

**COMMENTS:** Moderate, soft and easy doing young cow. Another very nice "Forged from Steel" daughter. Dam is a wonderful cow, selling at lot 15, one of the best "BIG GUN" daughters with extra softness. One of the outstanding bull calves in the mob at foot. really Balanced set of EBV's she could be bred different ways to suit various markets.

Polled Bull calf at foot Q24 by "LOUIS" 75% chance Homozygous Polled. Born 10/2/19

HARVIE JAGER 65J PMC228759 (OAC U8759E) (P)

GLENLEA BIG GUN (GLE B10E) (P)

**SIRE: BRANCH VIEW FORDGED FROM STEEL (BVC F34E) (P) DAM: JACKSON GALA (MEJ G6E) (P)**

BRANCH VIEW XQUISITE Z47E (BVC Z47E)

JAY TEES ADELPHI (JT A12E) (P)

March 2019 Australasian Charolais BREEDPLAN Analysis												
Charolais	CE Dir	GL	BW	200	400	600	Milk	SS	Carc Wt	EMA	Rump	IMF
EBV	-5.3	-1.8	+1.4	+14	+27	+38	+6	+1.2	+20	+1.8	-0.7	+0.2
Acc	42%	51%	65%	50%	49%	50%	42%	40%	39%	29%	32%	27%



CAF Q24



LAST YEARS CALF GLE P114E



View the video of E3, Q25 and Q26 at [www.glenleabeef.com.au](http://www.glenleabeef.com.au)

**COMMENTS:** Grand matron, classic high volume PINAY daughter, great temperament, our lead bull in his group by "Grandiose" is out of this cow. Was my pick cow at the Harleywood dispersal in 2014. EBV's show the highest EMA and Retail Beef Yield in the sale, both top 1% of the breed. Sound as a bell, lots of calves left in her yet, the sort of cow that stays on your place until a grand old age! Raising Twin bulls that are both doing very well. Great value buying!

Polled Twin bulls at foot Q25 and Q26 by "HOWLER" Born 10/2/19

IMPAIR 1893102983 (OAF N189F)

**SIRE: PINAY 8552394134 (OAF U4134F)**

MARY 8596100049 (OAF R8596F)

LAUREL 7195122401 (OAF Q7195F)

**DAM: HARLEYWOOD BROOKLYN (WEA B36E)**

BULLAGULL VICTORIA (MWS V1E)

March 2019 Australasian Charolais BREEDPLAN Analysis												
Charolais	CE Dir	GL	BW	200	400	600	Milk	SS	Carc Wt	EMA	Rump	IMF
EBV	+1.5	-4.8	+0.4	+11	+25	+31	+10	-0.3	+28	+4.0	-3.0	-0.2
Acc	59%	71%	74%	61%	62%	63%	56%	55%	55%	49%	53%	48%



TWIN CAF Q25 AND Q26



LAST YEARS CALF GLE P102E

LOT: 65

ORARA WATERFALL GRETEL 1ST (P)

TATTOO: WFA K24E DOB: 20/06/2014



View the video of K24 and Q27 at [www.glenleabeef.com.au](http://www.glenleabeef.com.au)

**COMMENTS:** Another outstanding "Forged from Steel" young cow, they would make a great group to put together as a line! Good framed, long, soft with plenty of volume, lovely udder with refined teats. Dam was a moderate female and K24 has retained her low BW while added thickness and frame from her sire. One of the lowest BW females in the sale. EBV's show top 10% direct calving ease and low BW with all positive carcass traits. K24 last year's heifer sells at Lot 28 as a show prospect heifer, one of my favorite's! Really solid polled bull calf at foot with LOW BW (actual 39kg) could be a stud heifer bull in the making!

Polled bull calf at foot Q27 by "HOWLER" Born 10/2/19 75% chance Homozygous Polled.

HARVIE JAGER 65J PMC228759 (OAC U8759E) (P)

ROSEDALE DINGA (MR D25E) (P)

**SIRE: BRANCH VIEW FORDGED FROM STEEL (BVC F34E) (P)**

**DAM: JACKSON GRETEL (MEJ G25E) (P)**

BRANCH VIEW XQUISITE Z47E (BVC Z47E)

JACKSON DAISY-MAY (MEJ D24E) (P)

Charolais LACTOP BREEDPLAN	March 2019 Australasian Charolais BREEDPLAN Analysis											
	CE Dir	GL	BW	200	400	600	Milk	SS	Carc Wt	EMA	Rump	IMF
EBV	+10.9	-3.2	-1.7	+8	+16	+21	+8	+1.4	+14	+1.3	+0.1	+0.1
Acc	42%	49%	69%	50%	49%	51%	41%	38%	38%	28%	31%	27%



CAF Q27



LAST YEARS CALF GLE P120E



View the video of K7 and Q28 at [www.glenleabeef.com.au](http://www.glenleabeef.com.au)

**COMMENTS:** Big volume young cow, the quality keeps coming through these Autumn cows. Light red factor in color (straw). Strong phenotype wide hips and pins, broad muzzle and classic wedge shape. Another "Dinga" daughter out of a Jackson Matron. Calf is a cracking heifer and one of the best by "HOWLER". EBV's show a bit of extra performance with moderate BW and top 20% 600 day growth with solid carcass traits. K7 last years heifer sells at Lot 36 as a show prospect heifer.

Polled heifer calf at foot Q28 by "HOWLER" Born 6 /2/19 75% chance Homozygous polled

PARINGA NOVOTEL A100 (TOL A100E) (P)  
**SIRE: ROSEDALE DINGA (MR D25E) (P)**  
 ROSEDALE WALLAH Z27 (MR Z27E)

GLENLEA BIG GUN (GLE B10E) (P)  
**DAM: JACKSON GEMMA (MEJ G8E) (P)**  
 JACKSON BRONTE (MEJ B37E) (P)

Charolais	March 2019 Australasian Charolais BREEDPLAN Analysis											
	CE Dir	GL	BW	200	400	600	Milk	SS	Carc Wt	EMA	Rump	IMF
EBV	+2.2	-2.0	+0.5	+16	+29	+46	+11	+0.9	+28	+1.4	-0.5	-0.3
Acc	44%	49%	70%	51%	51%	55%	38%	40%	42%	33%	40%	32%



CAF Q28



Last year's calf - Lot 36



View the video of G3 and Q17 at [www.glenleabeef.com.au](http://www.glenleabeef.com.au)

**COMMENTS:** Powerful big volume polled cow. She is registered as horned but is no doubt that she is polled. Photo does not do her justice, so make sure you view her video. Outcross to all other females in sale, except for a half sister selling at Lot 56. Has a powerful bull calf at foot. a daughter sells at Lot 91 and is a tremendous young cow as well who we are considering retaining her last bull calf as a sire! Outstanding bull calf at foot that could well be a stud sire prospect also.

Double polled bull calf at foot Q17 by "HONORABLE" Born 10/2/19

JACKSON ZODIAC (MEJ Z7E) (P)  
**SIRE: CB CANTERBURY (CBL C13E) (P)**  
 HARLEYWOOD ANNA 3 (WEA S10E) (P)

GARTONGRANGE BEAM MFETP0014067 (IAE F8601F) (P)  
**DAM: BLAWEARY XTAVAGANT (BLO X3E)**  
 BLAWEARY OPAQUE FM160 (BLO P2E) (P)

Charolais	March 2019 Australasian Charolais BREEDPLAN Analysis											
	CE Dir	GL	BW	200	400	600	Milk	SS	Carc Wt	EMA	Rump	IMF
EBV	+2.3	-1.1	+0.4	+5	+10	+14	+4	+0.6	+8			
Acc	36%	39%	51%	37%	37%	38%	35%	29%	30%			



CAF Q17





View the video of E367 and Q28 at [www.glenleabeef.com.au](http://www.glenleabeef.com.au)

**COMMENTS:** One of my favorite mature cows, just exhibiting that extra strong phenotype, massive loin, square from every angle, great head, jaw and muzzle. EBV's are top 10% 600 day growth, top 15% EMA and Retail beef yield. Her bull calf at foot has all the makings of a s stud sire prospect!

Polled bull calf at foot Q28 by "HOWLER" Born 6/2/19

EXCALIBUR FMC423 M64617 (IAC E6084F)  
**SIRE: FERVALE BARRISTER (FEN B27E)**  
 FERVALE MANDIE (FEN M37E)

GOBONGO VILLEROY V80E (GO V80E)  
**DAM: GOBONGO LOLA Z112E (GO Z112E)**  
 GOBONGO LAURA R19E (GO R19E)

March 2019 Australasian Charolais BREEDPLAN Analysis												
Charolais	CE Dir	GL	BW	200	400	600	Milk	SS	Carc Wt	EMA	Rump	IMF
EBV	+1.7	-0.1	+1.8	+18	+32	+48	+0	+0.8	+29	+2.1	-0.7	+0.0
Acc	42%	44%	54%	51%	51%	50%	52%	45%	45%	35%	38%	34%



CAF Q28



Last year's calf - Lot 30

LOT: 69

VALLEY VIEW CHIFFON 58 (AI) (ET) (P)

TATTOO: VLW H58E DOB: 25/12/2012



**COMMENTS:** This female has got the GOLD STAR... Big volumed, very easy doing cow, moderate framed, heavy milker with big pelvic area, classic wedge shape and strong head with broad muzzle. I put forward these physical traits in these comments as they are very important in the assessment of productive cattle that have the ability to maintain condition, raise a good calf and cycle and get back in calf. H58's Production is outstanding, 4 calves all with a reduced calving interval, the last born this year 4.5 weeks before her 2018 calf! Her Sire Red Smoke has over 230 registered progeny in Australia is a trait leader for low BW and has amazing carcass EBV's top 10% EMA combined with top 1% Fat cover for both Rib And Rump. Her dam is the Fernvale Chiffon cow, breed leading EBV's and a strong physical phenotype to go with those EBV's, very well known in the breed and Dam of our most powerful herd sire "GLENLEA HONORABLE (P) R/F. Her 2018 heifer calf, sired by "GRANDIOSE" was sold as a feature Lot at the recent Charnelle Invitational sale for \$4250 to Taylor Charolais at 12 month old. Her LOUIS heifer at foot is a special one, with the extra punch that "LOUIS" brings to her genetics she could end up better than mum! Polled heifer calf at foot Q29 By "LOUIS" Born 12/2/19 75% chance Homozygous Polled.

TR SMOKEONTHEWATER ET M690545 (PED -545E)

FERNVALE RIPPER (FEN R1E)

**SIRE: TR RED SMOKE M723761 (OAU B6641E) (P)**

**DAM: FERNVALE CHIFFON (FEN C22E)**

THOMAS MS ADVANTAGE 2621 F959316 (PED -9316E)

FERNVALE PRIMADONNA (FEN P28E)

Charolais	March 2019 Australasian Charolais BREEDPLAN Analysis											
	CE Dir	GL	BW	200	400	600	Milk	SS	Carc Wt	EMA	Rump	IMF
EBV	+5.5	-2.9	-0.8	+14	+19	+28	+6	+1.8	+16	+2.6	+3.2	+0.0
Acc	53%	60%	67%	58%	59%	60%	52%	51%	51%	40%	47%	40%



CAF Q29



LAST YEARS CALF GLE P109E



**COMMENTS:** Double Polled, long bodied and plenty of volume, well grown and excellent udder Daughter of lot 74 a great producing Gobongo matron. Sire is the proven " GRANDIOSE". EBV's show a good spread of growth traits from birth to mature and excellent carcass traits Top 20% EMA and Rump Fat, which we feel will improve as san data from progeny is submitted. Excellent bull calf at foot that could be a stud sire.

Polled bull calf at foot Q23 by CHALLAMBI MUSCLES (P) Born 6/2/19 75% chance Homozygous Polled.

EC NO DOUBT 2022 P M685500 (OAU Z2022E) (P)  
**SIRE: LITTLE VALLEY GRANDIOSE (GKB G5E) (P)**  
 LITTLE VALLEY DOLLY (GKB D5E) (P)

PALGROVE BOLSTER S WW1547XBA03460 (PK B544E)  
**DAM: GOBONGO LUCY E134E (GO E134E) (P)**  
 GOBONGO LUCY (GO T46E) (P)

Charolais GOCUP BREEDPLAN	March 2019 Australasian Charolais BREEDPLAN Analysis											
	CE Dir	GL	BW	200	400	600	Milk	SS	Carc Wt	EMA	Rump	IMF
EBV	-4.6	-1.9	+1.2	+10	+22	+30	+5	+0.2	+18	+2.2	+1.2	+0.3
Acc	39%	43%	66%	47%	47%	48%	39%	36%	37%	30%	33%	30%



CAF Q23



View the video of G9 and Q32 at [www.glenleabeef.com.au](http://www.glenleabeef.com.au)

**COMMENTS:** Big square wedged shaped cow, volume and softness with a perfect udder. One of the best "BIG GUN" daughters her milking ability defies her milk EBV's but that's not uncommon where limited data from the Dam side (Boongatti) has been submitted to Breedplan. Will improve with more data as she clearly has great milking ability. Has a good spread of growth from birth to mature and all positive carcass traits. Has small scurs. Very classy heifer calf at foot!

Double Polled Heifer calf at foot Q32 by "HONORABLE" Born 15/2/19

ICARE 7193116802 (OAF N7193F)

**SIRE: GLENLEA BIG GUN (GLE B10E) (P)**

GLENLEA JANET U6E R/F (GLE U6E) (P)

AYR IVANHOE'S ELUDE (AYR V416F)

**DAM: BOONGATTI ALLY (BOO A4E) (P)**

2UP FLAKE (2UP S24E)

Charolais	March 2019 Australasian Charolais BREEDPLAN Analysis											
	CE Dir	GL	BW	200	400	600	Milk	SS	Carc Wt	EMA	Rump	IMF
EBV	-8.4	-1.5	+1.9	+17	+23	+37	-2	+1.7	+18	+1.4	+0.3	-0.2
Acc	47%	49%	73%	57%	59%	64%	41%	45%	50%	36%	51%	31%



CAF Q32



Yearling Son

**LOT: 72****GLENLEA ALBERTA 3RD (P)****TATTOO: GLE J21E DOB: 06/04/2013**

[View the video of J21 and Q35 at www.glenleabeef.com.au](http://www.glenleabeef.com.au)

**COMMENTS:** Lovely polled cow, deep and thick with a medium frame. Strong phenotype with broad muzzle and loads of volume. Sire is GLENLEA EDDIE (P) Top priced bull at our 2011 sale at \$10,500. Dam was a big framed daughter of GENK a noted French sire. Ebv's show top 5% direct calving ease, top 20% low BW, top 10% EMA and Retail Beef Yield. Bull calf at foot has stud bull potential, very stylish calf, actual BW 41kg.

Polled bull calf at foot Q35 by "LOUIS" Born 18/2/19. 75% chance Homozygous Polled.

LT BLUEGRASS 4017P M686569 (OAU Z4017E) (P)

**SIRE: GLENLEA EDDIE (GLE E14E) (P)**

GLENLEA NOLANA 29TH (GLE C15E)

GENK 1891101481 (OAF L481F)

**DAM: THW ALBERTA (THW E7E)**

FERNVALE ALBERTA (FEN A10E) (P)



**March 2019 Australasian Charolais BREEDPLAN Analysis**

	CE Dir	GL	BW	200	400	600	Milk	SS	Carc Wt	EMA	Rump	IMF
EBV	+10.4	-2.5	-0.8	+13	+25	+34	+10	+1.5	+25	+2.4	-1.0	+0.3
Acc	46%	51%	70%	53%	53%	55%	45%	47%	45%	37%	38%	35%



CAF Q35



LAST YEARS CALF GLE P107E

LOT: 73

**GOBONGO LUCY E134E (P)**

TATTOO: GO E134E DOB: 29/09/2009



View the video of E134 and Q36 at [www.glenleabeef.com.au](http://www.glenleabeef.com.au)

**COMMENTS:** Great mature cow. Big Volume, very fine hair coat, excellent pelvic capacity and classic wedge shape with a great udder and Perfect temperament. Sire is Palgrove Bolster that I admired at the time (2008) when Gobongo bought him for his great carcass traits and they have been confirmed in his exceptional EBV's spread of EMA, FAT cover and IMF%, top 1% of the breed. E134 is passing on those carcass traits to her progeny, her 2107 bull was in our top sale pen and her 2018 son will be a feature bull at MONTO All Breeds Sale. Her "M" heifer sells with a sire prospect bull calf at foot as lot 70. Powerful bull calf at foot.

Polled Bull calf at foot Q36 by "LOUIS" Born 20/2/19. 75% chance Homozygous Polled.

PALGROVE XCEPT (PK X488E) (P/S)

CONROY SALUTE (OOC N7F)

**SIRE: PALGROVE BOLSTER S WW1547XBA03460 (PK B544E)**

**DAM: GOBONGO LUCY (GO T46E) (P)**

PALGROVE RAQUEL 30 (PK X200E)

MANDALONG OREGON M2E (RP M2E) (P/S)

March 2019 Australasian Charolais BREEDPLAN Analysis												
Charolais	CE Dir	GL	BW	200	400	600	Milk	SS	Carc Wt	EMA	Rump	IMF
EBV	+2.3	-0.9	+0.9	+4	+12	+12	+1	+0.0	+9	+1.7	+0.8	+0.2
Acc	45%	47%	60%	58%	57%	58%	56%	50%	49%	41%	44%	40%



CAF Q36



LAST YEARS CALF GLE P121E

**LOT: 74****VALLEY VIEW NOLANA 52 (AI) (P)**

TATTOO: VLW H52E DOB: 02/12/2012

View the video of H52 and Q37 at [www.glenleabeef.com.au](http://www.glenleabeef.com.au)

**COMMENTS:** This cow, like Lot 69 was born at "Westbrook" at Guyra, home of GLENLEA for 7 years. She was one of the lead females produced as part of a JV program during 2012/13 with Valley View. Her dam was sold by GLENLEA as a Frozen embryo way back in 2006 out of our leading DONOR at the time NOLANA W15E to Valley View. A medium framed, extra long cow with a fine hair coat, Hugh barrel to her and heavy milker, with strong polled head and broad muzzle. Her production has been outstanding LOT 1 in this sale was her first daughter and is rated as a Gold Star female herself, with an obvious stud sire bull calf at foot. Her next calf was not recorded unfortunately, then moved to an autumn calving pattern when she produced N15 who sold for \$5000 out of the paddock as a yearling heifer as part of a start up stud package last year. Next in 2018 came PRIMUS, he is not yet 12 months in the photo and 600kg he weaned at 390kg at 8 months on coastal country with only some dry lick through the winter while on his mum. Her calving interval over the last three calves in has reduced every year including her 2019 calf, who is a sire prospect already a proud look at me calf that started at a moderate BW. Her EBV's top 5% direct calving ease, top 10% EMA, IMF% and MILK. With well below breed average BW and good growth that when we submit the last two calves data will increase markedly. Polled bull calf at foot Q37 by "HOWLER" Born 21/2/19. 75% chance calf is Homozygous Polled

LT ASSERTION 1277 M620193 (PED W1277F) (P)

ICARE 7193116802 (OAF N7193F)

**SIRE: LT BLUEGRASS 4017P M686569 (OAU Z4017E) (P)****DAM: VALLEY VIEW C009 NOLANA (VLW C9E)**

LT PEARLS BREEZE 2236 F956080 (PED X2236F) (P)

GLENLEA NOLANA WISE (GLE W15E)

Charolais Sector BestBreed Analysis	March 2019 Australasian Charolais BREEDPLAN Analysis											
	CE Dir	GL	BW	200	400	600	Milk	SS	Carc Wt	EMA	Rump	IMF
EBV	+10.3	-4.0	-0.4	+13	+21	+26	+11	+1.4	+18	+2.6	+0.6	+0.8
Acc	56%	73%	71%	61%	60%	61%	57%	54%	54%	48%	49%	47%



CAF Q37



LAST YEARS CALF GLE P103E PRIMUS

LOT: 75

# GLENLEA NUNCIATA 50TH (P)

TATTOO: GLE H17E DOB: 11/04/2012



View the video of H17 and Q39 at [www.glenleabeef.com.au](http://www.glenleabeef.com.au)

**COMMENTS:** Moderate framed polled female with good shape and volume, good hair coat and genuine doing ability, doing a great job on her calf. Sired by GLENLEA EARLY (P) a Sire of note in the CALMVIEW Herd of TONY FARREL at Lismore. EBV's show top 10% calving ease, and Low BW and MILK.

Double polled Heifer calf at foot Q39 by "HONORABLE" Born 6/3/19

LT BLUEGRASS 4017P M686569 (OAU Z4017E) (P)  
**SIRE: GLENLEA EARLY (GLE E11E) (P)**  
GLENLEA JANET 26TH R/F (PS) (GLE C8E) (P)

VIOLET HILLS WINTON (VHV W74E)  
**DAM: GLENLEA NUNCIATA 25TH (GLE B41E)**  
GLENLEA NUNCIATA X9E (GLE X9E)

Charolais Breedplan Analysis	March 2019 Australasian Charolais BREEDPLAN Analysis											
	CE Dir	GL	BW	200	400	600	Milk	SS	Carc Wt	EMA	Rump	IMF
EBV	+11.3	-4.5	-1.2	+11	+22	+31	+12	+1.7	+19	+0.9	-1.0	+0.4
Acc	45%	49%	72%	62%	64%	67%	46%	48%	55%	43%	56%	38%



CAF Q39





View the video of K31 and Q46 at [www.glenleabeef.com.au](http://www.glenleabeef.com.au)

**COMMENTS:** Stylish polled female very refined through the front end, with plenty of thickness from behind, perfect udder and soft easy doing type. Dam is selling as lot 14, and her 2018 daughter is selling as lot 31 show prospect heifer. EBV's show Top 5% calving ease, gestation length and low BW, with reasonable growth and good carcass traits, ideal to join to a power sire. Doing a great job of her heifer calf.

Polled heifer calf at foot by "LOUIS" Born 10/3/19. 75% chance Homozygous Polled.

LT BLUEGRASS 4017P M686569 (OAU Z4017E) (P)  
**SIRE: GLENLEA EDDIE (GLE E14E) (P)**  
 GLENLEA NOLANA 29TH (GLE C15E)

WCR PRIME CUT 764 PLD PMC223447 (OAC S764E) (P)  
**DAM: GOBONGO ELLA E412E (GO E412E)**  
 GOBONGO ELLA C148E (GO C148E)

March 2019 Australasian Charolais BREEDPLAN Analysis												
Charolais	CE Dir	GL	BW	200	400	600	Milk	SS	Carc Wt	EMA	Rump	IMF
EBV	+12.7	-5.0	-2.6	+10	+19	+24	+9	+1.7	+19	+1.6	-0.3	+0.5
Acc	45%	50%	68%	52%	52%	54%	43%	49%	44%	38%	40%	37%



CAF Q46



Last year's calf - Lot 31

LOT: 77

PIPECLAY E3E (AI) (TW)

TATTOO: ROL E3E DOB: 14/08/2009



View the video of E3 and Q5 at [www.glenleabeef.com.au](http://www.glenleabeef.com.au)

**COMMENTS:** Wow this is matron female! Many judges would give her GOLD STAR STATUS in this sale. Hugh volume and thickness, medium framed, long heavy cow, great udder, sound as a bell with a great temperament! Sired by PINAY. Her dam is a French sired Granddaughter of the original Estella 7 cow that started Palgrove's most prolific cow family. Maternal half sister to dam of Lot 2, GOLD STAR LOT. Dam of feature show prospect polled heifer GLE P117E selling at Lot 26. EBV's are top 1% of breed for EMA and Retail Beef Yield, Top 20% early gestation. Her heifer calf was born two weeks before any other "HOWLER" calves and I spent over half an hour looking for a twin that never existed, just born really early at only 33kg actual weight! Look at her photo now, one of the standout heifer calves in the mob that will have massive curve bending EBV's. On top of all that she come with built in A.W.D.D ( Anti Wild Dog Device, HORNS!) no better advertisement for a good Homo Polled bull to completely remove those genetically from all her progeny! Should have been catalogued much earlier in sale but was missed of the first draft of the catalogue order! Polled heifer calf at foot Q5 by "HOWLER" born 17/1/19

IMPAIR 1893102983 (OAF N189F)

LAUREL 7195122401 (OAF Q7195F)

**SIRE: PINAY 8552394134 (OAF U4134F)**

**DAM: PIPECLAY BOP BOP (ROL B2E)**

MARY 8596100049 (OAF R8596F)

PALGROVE ESTELLA 137 (PK W323E)

March 2019 Australasian Charolais BREEDPLAN Analysis												
Charolais	CE Dir	GL	BW	200	400	600	Milk	SS	Carc Wt	EMA	Rump	IMF
EBV	-3.1	-4.4	+0.8	+13	+28	+35	+11	-0.3	+31	+4.1	-2.6	-0.1
Acc	56%	57%	62%	57%	57%	58%	57%	55%	54%	49%	52%	48%



CAF Q5



LAST YEARS CALF GLE P117E

LOT: 78

ORARA WATERFALL ELSA 1ST (P)

TATTOO: WFA K3E DOB: 08/02/2014



View the video of K3 and Q42 at [www.glenleabeef.com.au](http://www.glenleabeef.com.au)

**COMMENTS:** Another outstanding Double Polled, light Red Factor "DINGA" daughter. Volume, thickness, classic wedge shape with medium frame, great udder and real world doability with softness and an ideal polled head. Dam is selling at Lot 96 a powerful GLENLEA ELSA COW with massive carcass and overall thickness, the ELSA cow family has a near 40 year history in the GLENLEA herd, noted for growth and extra carcass. EBV's top 5% calving ease and Milk, Top 10% low BW and excellent growth and all positive carcass traits, we think that all her growth and carcass traits will increase with more progeny data submitted to breedplan based on our 30 years participation in breedplan recording. A wow factor bull calf at foot, stud sire prospect!

Double Polled Red Factor Bull calf at foot Q42 by "HONORABLE" Born 10/3/19.

PARINGA NOVOTEL A100 (TOL A100E) (AI) (ET) (P)  
**SIRE: ROSEDALE DINGA (MR D25E) (P)**  
 ROSEDALE WALLAH Z27 (MR Z27E) (R/F)

RANGAN PARK RIO BRAVO D15 (RAN D15E) (AI) (ET) (P)  
**DAM: GLENLEA ELSA G24E (GLE G24E) (AI) (ET) (P)**  
 GLENLEA ELSA V14E (GLE V14E) (AI) (TW)

	March 2019 Australasian Charolais BREEDPLAN Analysis											
	CE Dir	GL	BW	200	400	600	Milk	SS	Carc Wt	EMA	Rump	IMF
EBV	+10.8	-3.6	-1.4	+12	+25	+40	+13	+0.9	+23	+0.9	+0.3	+0.5
Acc	48%	52%	72%	58%	60%	66%	44%	45%	53%	43%	55%	44%



WFA KE3

LOT: 79

ORARA WATERFALL CHAROL 1ST (P)

TATTOO: WFA K44E DOB: 06/09/2014



View the video of K44 and Q48 at [www.glenleabeef.com.au](http://www.glenleabeef.com.au)

**COMMENTS:** The last of the "BRANCH VIEW Forged from Steel (P) R/F" females in the sale a sire we purchased in 2012 for \$16,000, and a credit to his breeder Andrew Postle, QLD. This female is big, soft, deep and a great milker. The calf was weighed and tagged after his photo as the cow had calved the night before, his cord is still wet in photo. The dam was a big strong cow out of a GLENLEA Donor cow by a Full French Impeccable X Ijoufflu sire. EBV's are balanced across all traits and above breed average in most. Show prospect heifer P124 sells at lot 34.

Polled bull calf at foot Q48 by "LOUIS" Born 25/3/19. 75% chance calf in Homozygous Polled

HARVIE JAGER 65J PMC228759 (OAC U8759E) (P)

CRATHES DR. IMPECCABLE (KRG D21F)

**SIRE: BRANCH VIEW FORDGED FROM STEEL (BVC F34E) (P)**

**DAM: GLENLEA CHAROL 58TH (GLE G32E) (P)**

BRANCH VIEW XQUISITE Z47E (BVC Z47E)

GLENLEA CAAROL W8E (GLE W8E)

March 2019 Australasian Charolais BREEDPLAN Analysis												
Charolais	CE Dir	GL	BW	200	400	600	Milk	SS	Carc Wt	EMA	Rump	IMF
EBV	+0.1	-1.4	+1.0	+11	+20	+31	+8	+1.7	+14	+1.5	-1.1	+0.3
Acc	42%	47%	55%	48%	48%	48%	43%	41%	41%	32%	37%	30%



CAF Q48



Last year's calf GLE P124

LOT: 80

ORARA WATERFALL GABBY 1ST (P)

TATTOO: WFA M54E DOB: 01/10/2016



View the video of M54 and Q45 at [www.glenleabeef.com.au](http://www.glenleabeef.com.au)

**COMMENTS:** Very neat Double polled, medium framed first calver. Plenty of carcass and perfect udder. Sire is proven and very consistent. Dam sells at Lot 99 and is a big strong polled cow herself, M54 is more moderate in frame than her Dam and her EBV's are a good spread from birth to Mature weight with all strongly positive carcass traits. And top 15% EMA. Very proud little bull at foot, potential stud heifer bull. Actual BW 38kg.

Polled bull calf at foot Q45, by CHALAMBI MUSCLES (P) Born 17/3/19. 75% chance calf is Homozygous Polled.

EC NO DOUBT 2022 P M685500 (OAU Z2022E) (P)  
**SIRE: LITTLE VALLEY GRANDIOSE (GKB G5E) (P)**  
LITTLE VALLEY DOLLY (GKB D5E) (P)

CRATHES DR. IMPECCABLE (KRG D21F)  
**DAM: JACKSON GABBY (MEJ G11E) (P)**  
ROSEDALE BUTTERSCOTCH X152 (MR X152E) (P)

March 2019 Australasian Charolais BREEDPLAN Analysis												
Charolais	CE Dir	GL	BW	200	400	600	Milk	SS	Carc Wt	EMA	Rump	IMF
EBV	-7.2	-1.6	+1.5	+15	+25	+41	+9	+0.8	+21	+2.3	+0.8	+0.5
Acc	41%	43%	69%	47%	47%	49%	36%	34%	37%	29%	32%	29%



LOT 81 WFA M54E



View the video of H149 and Q47 at [www.glenleabeef.com.au](http://www.glenleabeef.com.au)

**COMMENTS:** An outstanding double polled cow to finish the Autumn cow section of the sale, thickness, overall power and bomb proof temperament. Medium framed with a perfect udder. Her sire we bought in 2006 for \$20,000 at the national sale and he has over 200 registered progeny and semen was exported internationally. Her Dam was a daughter of Grand Champion female at NATIONAL SHOW AND SALE IN 2001, Palgrove Aroha who was also top priced female that year. H149 had produced the top bull of the "L" drop for Waterfall and her 2017 drop heifer is a feature joined female at Lot 88. Her 2018 heifer sells at Lot 25 to start off our run of show prospect heifers. very nearly got GOLD STAR RATING! EBV's have above average growth with Top 10% EMA and Retail Beef Yield. Extremely stylish heifer calf at side, only a couple weeks old but already a natural posing for the camera! Polled heifer calf at foot Q47 by "HOWLER" Born 17/3/19. 75% chance calf in Homozygous Polled.

VIOLET HILLS V.H. VINCENT (VHV V47E)  
**SIRE: VIOLET HILLS ZACHARIAH (VHV Z80E) (P)**  
 VIOLET HILLS TRINKET (VHV T58E) (P)

LINKLETTER A28E (LJA A28E) (P)  
**DAM: JACKSON CHICKEN (MEJ C49E) (P)**  
 PALGROVE AROHA 14 (PK U49E)

March 2019 Australasian Charolais BREEDPLAN Analysis												
Charolais	CE Dir	GL	BW	200	400	600	Milk	SS	Carc Wt	EMA	Rump	IMF
EBV	+0.6	-2.0	+1.6	+19	+31	+37	+0	+0.2	+24	+2.3	-0.8	-0.2
Acc	50%	55%	71%	56%	56%	57%	49%	55%	47%	39%	42%	36%



CAF Q47



LAST YEARS CALF GLE P101E

# Glenlea Beef Presents:

## 31 JOINED FEMALES

**This group of females includes some outstanding individuals.  
To be pregnancy tested prior to sale.**

A small group have had the opportunity to GLENLEA HONORABLE (P) R/F, the bull died over the summer and so this will be his last offering of joined females, possibly ever! The dry cows are exceptional that why they are in the sale, any lesser breeders were sold last year. "The yearling heifers are a complete drop of spring 2017, less 3 heifers that did meet the performance criteria.

Complete Dispersal of the Waterfall Herd and your opportunity to add Leading GLENLEA Genetics to take advantage of the future of a profitable Australian Beef Industry.

### "DROUGHT BUSTER" SALE OFFERS:

- 50% of sale price paid under normal Elders terms, balance due in 6 months with no interest. TAP (This must be arrange direct with vendor prior to auction.)
- Agistment for 16 weeks at \$7 +gst per week per head is available on these lots. Longer term by arrangement.

#### TESTIMONIAL FROM RYAN HOLZWART, BAUHINIA PARK CHAROLAIS, EMERALD QLD

*We purchased a selection of Glenlea females in 2015 and again at the 2017 female sale. Because of the wider range of genetics on offer, we were able to select cows with the breeding and appeal to suit our operation. The cows we have selected have adapted well to the conditions in our part of Central Queensland and continue to produce good quality progeny. One of the bulls calves at foot was specifically purchased alongside his dam as a potential future stud sire, he has grown out exceptionally well and was retained as hoped. Roderick knew his herd of cattle very well and was a big help all round, even offering vendor terms if required.*



Ryan Holzwart & family

#### TESTIMONIAL FROM ALAN "ROBBO" ROBINSON, MAITLAND NSW



**Australian record holding Jockey for most winners in a season (224.5)  
and former Channel 9, Footy Show personality.**

*Roderick has been great to deal with, we have been buying females off him for the last four years, always sight unseen and he has always personally delivered them every time.*

*Our GLENLEA cattle are super quiet, my family and I are proud to own them and breed from them and we tell anyone who will listen how great they are!*

*Our whole herd in near future will be all Glenlea Bloodlines and with the purchase of a new property we will need some more of the great Glenlea cows!*

Alan "Robbo" Robinson with daughter Maddie and one of there favourtie Glenlea cows

**LOT: 82****ORARA WATERFALL CHARL 6TH (AI)(P)** TATTOO: WFA M14E DOB: 23/03/2016**COMMENTS:**

An outstanding daughter of GOLD STAR female GLE J8E lot 47. By the proven sire "RP RIO D15E" and due to calve end of April to CHALAMBI MUSCLES (P) HOMOZYGOUS POLLED JOINING SIRE. Smooth neat front end, thick easy doing type with great pelvic capacity and that X factor!

EBV's are just about ideal spread for a charolais female top 10% Growth, EMA with positive fat cover and Retail beef Yield. If you miss out on her mum buy the daughter!

Calving to CHA M15E due April 2019.

LT RIO BRAVO 3181 P M665507 (OAU Y5507E) (P)

ROSEDALE DINGA (MR D25E) (P)

**SIRE: RANGAN PARK RIO BRAVO D15 (RAN D15E) (P) DAM: GLENLEA CHAROL 72ND (GLE J8E) (P)**

PALGROVE SHOW GIRL 6 (PK P82E) (P)

GLENLEA CAAROL 42ND F37 (GLE F37E) (P)



## March 2019 Australasian Charolais BREEDPLAN Analysis

	CE Dir	GL	BW	200	400	600	Milk	SS	Carc Wt	EMA	Rump	IMF
EBV	+1.5	-4.6	+0.0	+18	+34	+49	+11	+1.5	+28	+2.4	+1.0	+0.8
Acc	48%	50%	56%	51%	52%	52%	48%	48%	46%	41%	44%	41%

**LOT: 83****ORARA WATERFALL GRACE 2ND (P)**

TATTOO: WFA M41E DOB: 13/09/2016

**COMMENTS:**

Another outstanding well grown heifer on point of calving. Very similar to previous lot, would make a great pair to travel together, dam is an outstanding cow that sells at lot 16. Good easy doing female, the kind we aim to breed. Both these heifers would be calved down and delivered when the calves are old enough to travel or take advantage of our agistment offer and leave them here to join.

Calving to CHA M15E due April 2019.

EC NO DOUBT 2022 P M685500 (OAU Z2022E) (P)

ROSEDALE DINGA (MR D25E) (P)

**SIRE: LITTLE VALLEY GRANDIOSE (GKB G5E) (P)****DAM: JACKSON GRACE (MEJ G26E) (P)**

LITTLE VALLEY DOLLY (GKB D5E) (P)

JACKSON ZIGGY (MEJ Z1E) (P)



## March 2019 Australasian Charolais BREEDPLAN Analysis

	CE Dir	GL	BW	200	400	600	Milk	SS	Carc Wt	EMA	Rump	IMF
EBV	-3.8	-2.3	+0.6	+13	+25	+40	+10	+0.8	+23	+1.8	+1.0	+0.2
Acc	41%	44%	68%	46%	46%	48%	35%	33%	35%	28%	31%	27%



**LOT: 84****GLENLEA REFINE 3RD (P) (R/F)**

TATTOO: GLE M72E DOB: 12/09/2016

**COMMENTS:**

An outstanding "HONORABLE" heifer. Double Polled, Red factor. Thick and soft as butter, doability plus!

M72 is typical of how the "HONORABLE" females grow out! EBV's speak for themselves just about ideal in our opinion for a charolais female when in a medium framed easy doing phenotype. M72's Dam sells at lot 98 as is joined back to "HONORABLE" calf with be full sibling to this heifer.

Joined KENWORTH 7/11/18 to 12/12/18 PTIC

RANGAN PARK REDEMPTION E42 (RAN E42E) (P)  
**SIRE: GLENLEA HONOURABLE (VLW H25E) (P)**  
 FERNVALE CHIFFON (FEN C22E)

LT BLUEGRASS 4017P M686569 (OAU Z4017E) (P)  
**DAM: MULLUM REFINE 3 (BLA H36E) (P)**  
 MULLUM REFINE 1 (BLA E35E) (P)



## March 2019 Australasian Charolais BREEDPLAN Analysis

	CE Dir	GL	BW	200	400	600	Milk	SS	Carc Wt	EMA	Rump	IMF
EBV	+0.7	-3.7	+0.5	+17	+30	+40	+9	+1.1	+24	+2.8	+1.1	+0.7
Acc	43%	50%	68%	49%	49%	51%	40%	40%	41%	34%	37%	34%

**LOT: 85****ORARA WATERFALL ELSA 3RD (P)**

TATTOO: WFA M39E DOB: 12/09/2016

**COMMENTS:**

Very well bred heifer, double polled that had a set back as a youngster. Has grown out to nearly catch her peers, and will as she matures. Good opportunity. EBV's top 15% 600 day growth top 10% EMA. Dam sells at Lot 96 .

Joined CHALAMBI MUSCLES 27/6/18 to 13/8/18 then "KENWORTH" 7/11/18 to 12/12/18 PTIC

EC NO DOUBT 2022 P M685500 (OAU Z2022E) (P)  
**SIRE: LITTLE VALLEY GRANDIOSE (GKB G5E) (P)**  
 LITTLE VALLEY DOLLY (GKB D5E) (P)

RANGAN PARK RIO BRAVO D15 (RAN D15E) (P)  
**DAM: GLENLEA ELSA G24E (GLE G24E) (P)**  
 GLENLEA ELSA V14E (GLE V14E)



## March 2019 Australasian Charolais BREEDPLAN Analysis

	CE Dir	GL	BW	200	400	600	Milk	SS	Carc Wt	EMA	Rump	IMF
EBV	-2.5	-3.4	+0.7	+15	+32	+47	+10	+0.4	+28	+2.5	+1.1	+0.7
Acc	43%	45%	68%	48%	48%	50%	40%	38%	39%	32%	36%	32%

**LOT: 86****ORARA WATERFALL CONFIDENCE 3RD (P)(R/F) TATTOO: WFA M51E DOB: 08/10/2016****COMMENTS:**

Double polled, light Red factor heifer same story as previous lot so joined to calve at rising 3 years. EBV's top 10% 600 day with strong carcass traits.

Joined CHALAMBI MUSCLES 27/6/18 to 13/8/18 then "KENWORTH" 7/11/18 to 12/12/18 PTIC

EC NO DOUBT 2022 P M685500 (OAU Z2022E) (P)  
**SIRE: LITTLE VALLEY GRANDIOSE (GKB G5E) (P)**  
 LITTLE VALLEY DOLLY (GKB D5E) (P)

LT EASY BLEND 5125 PLD M705113 (OAU A5113E) (P)  
**DAM: GLENLEA CONFIDENCE 9TH (GLE H103E) (P)**  
 GOBONGO CONFIDENCE C13E (GO C13E) (P)



## March 2019 Australasian Charolais BREEDPLAN Analysis

	CE Dir	GL	BW	200	400	600	Milk	SS	Carc Wt	EMA	Rump	IMF
EBV	-7.3	-2.8	+1.3	+18	+36	+50	+7	+0.6	+28	+1.4	+0.9	+0.3
Acc	43%	46%	69%	50%	50%	51%	40%	38%	41%	35%	40%	34%

**LOT: 87****ORARA WATERFALL HALINA 2ND (P)****TATTOO: WFA N3E DOB: 23/02/2017**

**COMMENTS:** Outstanding "N" 2017 Autumn heifer this lot and next are the only two from the Autumn drop, last year we sold most privately, but retained these two as the pick of the WFA heifers, to come back into the herd, and now with this dispersal you have the opportunity to buy them!

Full sister sells at Lot 25. Dam sells at Lot 82. Double Polled. EBV's are in the idea zone for growth, EMA with top 15% Retail Beef Yield.

Joined to "KENWORTH" 14/12/18 to 15/3/19

EC NO DOUBT 2022 P M685500 (OAU Z2022E) (P)  
**SIRE: LITTLE VALLEY GRANDIOSE (GKB G5E) (P)**  
 LITTLE VALLEY DOLLY (GKB D5E) (P)

VIOLET HILLS ZACHARIAH (VHV Z80E) (P)  
**DAM: JACKSON HALINA (MEJ H149E) (P)**  
 JACKSON CHICKEN (MEJ C49E) (P)



## March 2019 Australasian Charolais BREEDPLAN Analysis

	CE Dir	GL	BW	200	400	600	Milk	SS	Carc Wt	EMA	Rump	IMF
EBV	-6.8	-2.4	+1.6	+18	+32	+43	+4	+0.3	+26	+2.5	+0.4	+0.1
Acc	41%	45%	68%	47%	47%	49%	37%	38%	37%	29%	32%	29%

**LOT: 88****ORARA WATERFALL GRACE 3RD (P)**

TATTOO: WFA N14E DOB: 12/03/2017

**COMMENTS:**

Hard to tell this lot and previous lot apart, could be twins! Big volume, smooth, thick and soft double polled. Dam is a "Forged from Steel" daughter they are great producers, we will use him again in A.I. programs this year. Dam sells at LOT 92. EBV's are that same pattern again moderate BW, plenty of growth around top 20% and top 10% EMA with all positive carcass traits!

Joined to "KENWORTH"  
14/12/18 to 15/3/19

EC NO DOUBT 2022 P M685500 (OAU Z2022E) (P)  
**SIRE: LITTLE VALLEY GRANDIOSE (GKB G5E) (P)**  
LITTLE VALLEY DOLLY (GKB D5E) (P)

BRANCH VIEW FORDGED FROM STEEL (BVC F34E) (P)  
**DAM: ORARA WATERFALL GRACE 1ST (WFA K27E) (P)**  
JACKSON GRACE (MEJ G26E) (P)



## March 2019 Australasian Charolais BREEDPLAN Analysis

	CE Dir	GL	BW	200	400	600	Milk	SS	Carc Wt	EMA	Rump	IMF
EBV	-1.7	-2.7	+0.2	+13	+25	+37	+10	+0.9	+22	+2.0	+0.7	+0.3
Acc	39%	43%	64%	44%	44%	46%	35%	33%	34%	26%	29%	26%

**LOT: 89****GOODVIEW ALICIA 2ND (P)**

TATTOO: HEL K2E DOB: 05/01/2014

**COMMENTS:**

Lovely big soft double polled cow. By the extra soft "FREEWAY" sire. Progeny have been outstanding, EBV's once again so that spread of moderate BW top end growth and plenty of carcass. She is an impressive female and all these joined cows will be excellent value buying.

Joined to "KENWORTH"  
HOMOZYGOUS REFERENCE  
SIRE 12/1/19 to 11/4/19

LT RIO BRAVO 3181 P M665507 (OAU Y5507E) (P)  
**SIRE: GLENLEA FREEWAY (GLE F22E) (P)**  
THW WINDY WENDY (THW D1E) (P)

ADVANCE VOUCHER (ADV V10E)  
**DAM: GOODVIEW ALICIA (HEL A2E) (P)**  
MINNIE-VALE SASSAFRAS Y8E (SGS Y8E) (P)



## March 2019 Australasian Charolais BREEDPLAN Analysis

	CE Dir	GL	BW	200	400	600	Milk	SS	Carc Wt	EMA	Rump	IMF
EBV	+0.2	-2.9	+0.6	+16	+30	+45	+9	+1.4	+22	+1.4	+1.4	+0.8
Acc	34%	33%	46%	40%	41%	40%	35%	32%	34%	30%	31%	29%

**LOT: 90****ORARA WATERFALL PIPECLAY 1ST (P)(R/F) TATTOO: WFA K14E DOB: 14/03/2014****COMMENTS:**

Medium framed, Double Polled light Red factor cow. Her last years calf is one of our lead yearling bulls. EBV's have low BW and very positive direct calving ease. She has that big barrel and is very easy doing.

Joined to "Honorable" 12/1/19 to 28/2/19 then with "KENWORTH" 1/3/19 to 11/4/19

PARINGA NOVOTEL A100 (TOL A100E) (P)

CB CANTERBURY (CBL C13E) (P)

**SIRE: ROSEDALE DINGA (MR D25E) (P)****DAM: PIPECLAY G3E (ROL G3E)**

ROSEDALE WALLAH Z27 (MR Z27E)

BLAWEARY XTAVAGANT (BLO X3E)



## March 2019 Australasian Charolais BREEDPLAN Analysis

	CE Dir	GL	BW	200	400	600	Milk	SS	Carc Wt	EMA	Rump	IMF
EBV	+8.3	-2.1	-0.7	+9	+18	+29	+10	+1.1	+18	+0.4	+0.1	+0.0
Acc	40%	47%	66%	46%	46%	48%	36%	35%	37%	30%	33%	29%

**LOT: 91****ORARA WATERFALL GRACE 1ST (P)****TATTOO: WFA K27E DOB: 24/06/2014****COMMENTS:**

Stylish medium framed double polled cow, has produced great progeny, a daughter, N14 is a feature joined 2 year old heifer selling at Lot 89 and a show prospect heifer P123 at Lot 33. Ebv's have low BW with very positive calving ease, this sort of cows only come up in dispersal or major reduction type sales, great genetics and great value for money!

Joined to "HONORABLE" 12/1/19 to 28/2/19 then to "KENWORTH" 1/3/19 to 11/4/19

HARVIE JAGER 65J PMC228759 (OAC U8759E) (P)

ROSEDALE DINGA (MR D25E) (P)

**SIRE: BRANCH VIEW FORDGED FROM STEEL (BVC F34E) (P)****DAM: JACKSON GRACE (MEJ G26E) (P)**

BRANCH VIEW XQUISITE Z47E (BVC Z47E)

JACKSON ZIGGY (MEJ Z1E) (P)



## March 2019 Australasian Charolais BREEDPLAN Analysis

	CE Dir	GL	BW	200	400	600	Milk	SS	Carc Wt	EMA	Rump	IMF
EBV	+9.5	-2.7	-1.4	+8	+17	+23	+10	+1.4	+15	+1.4	-0.2	+0.2
Acc	44%	50%	70%	52%	51%	52%	42%	39%	39%	28%	31%	27%

**LOT: 92****GOODVIEW CINDY 2ND (P)**

TATTOO: HEL J6E DOB: 28/11/2013

**COMMENTS:**

A powerful double polled "BIG GUN" daughter as they all are! Fine hair, big volumed and great bone on big sound feet, would suit Northern breeding programs. a daughter sells at LOT 107.

Joined to "KENWORTH"  
HOMOZYGOUS REFERENCE  
SIRE 12/1/19 to 11/4/19

ICARE 7193116802 (OAF N7193F)

**SIRE: GLENLEA BIG GUN (GLE B10E) (P)**

GLENLEA JANET U6E R/F (GLE U6E) (P)

ROSEDALE ZIGZAG (MR Z142E) (P)

**DAM: GOODVIEW CINDY (HEL C3E) (P)**

GOODVIEW TEMPTATION (HEL T2E) (P)



## March 2019 Australasian Charolais BREEDPLAN Analysis

	CE Dir	GL	BW	200	400	600	Milk	SS	Carc Wt	EMA	Rump	IMF
EBV	-11.5	-1.0	+2.0	+14	+23	+34	+3	+0.6	+20	+1.5	-0.5	
Acc	43%	46%	61%	47%	46%	47%	38%	38%	37%	28%	32%	

**LOT: 93****GLENLEA JANET 61ST (P)**

TATTOO: GLE H16E DOB: 08/04/2012

**COMMENTS:**

Powerful double polled female, massive carcass a rare cross of "BIG GUN and IJOUFFLU" fine haired, ideal for northern programs. very nice heifer, N66 sells at Lot 112 she should be further up in catalogue, I like to have a few really good ones at the end of a catalogue.

Joined to "KENWORTH"  
HOMOZYGOUS REFERENCE  
SIRE 12/1/19 to 11/4/19

ICARE 7193116802 (OAF N7193F)

**SIRE: GLENLEA BIG GUN (GLE B10E) (P)**

GLENLEA JANET U6E R/F (GLE U6E) (P)

IJOUFFLU 6327351004 (OAF N6327F)

**DAM: GLENLEA JANET 26TH R/F (PS) (GLE C8E) (P)**

GLENLEA JANET S7E R/F (GLE S7E) (P)



## March 2019 Australasian Charolais BREEDPLAN Analysis

	CE Dir	GL	BW	200	400	600	Milk	SS	Carc Wt	EMA	Rump	IMF
EBV	-16.4	-2.7	+2.6	+17	+25	+41	+6	+0.8	+20	+1.6	-1.4	-0.2
Acc	50%	55%	73%	64%	66%	68%	48%	50%	56%	44%	58%	37%

**LOT: 94****GLENLEA JANET 60TH (AI) (P)****TATTOO: GLE H8E DOB: 18/02/2012****COMMENTS:**

Thickness, volume and so eye appealing, double polled. Massive carcass EBV's with excellent growth and moderate BW. Will breed progeny for any market.

Joined to "Honorable" 12/11/18 to 31/1/19

LT RIO BRAVO 3181 P M665507 (OAU Y5507E) (P)      VIOLET HILLS ZACHARIAH (VHV Z80E) (P)  
**SIRE: RANGAN PARK RIO BRAVO D15 (RAN D15E) (P)**    **DAM: GLENLEA JANET 30TH (GLE E10E) (P)**  
 PALGROVE SHOW GIRL 6 (PK P82E) (P)                      GLENLEA JANET U6E R/F (GLE U6E) (P)

**March 2019 Australasian Charolais BREEDPLAN Analysis**

	CE Dir	GL	BW	200	400	600	Milk	SS	Carc Wt	EMA	Rump	IMF
EBV	+0.5	-5.8	+0.1	+19	+34	+41	+6	+0.8	+27	+3.1	+1.3	+0.8
Acc	51%	67%	66%	63%	65%	62%	53%	55%	56%	48%	58%	44%

**LOT: 95****GLENLEA ELSA G24E (AI) (ET) (P)****TATTOO: GLE G24E DOB: 14/09/2011****COMMENTS:**

Powerful Polled female, tremendous carcass, great spread of EBV's with moderate BW to top 15% 600 day and EMA. Daughter sells at lot 86, and her last years bull is one of the lead sale bulls for 2019.

Joined to "KENWORTH" HOMOZYGOUS REFERENCE SIRE 12/1/19 to 11/4/19

LT RIO BRAVO 3181 P M665507 (OAU Y5507E) (P)      IMPAIR 1893102983 (OAF N189F)  
**SIRE: RANGAN PARK RIO BRAVO D15 (RAN D15E) (P)**    **DAM: GLENLEA ELSA V14E (GLE V14E)**  
 PALGROVE SHOW GIRL 6 (PK P82E) (P)                      GLENLEA ELSA S1E R/F (GLE S1E)

**March 2019 Australasian Charolais BREEDPLAN Analysis**

	CE Dir	GL	BW	200	400	600	Milk	SS	Carc Wt	EMA	Rump	IMF
EBV	+2.5	-3.6	+0.6	+16	+35	+49	+9	+0.4	+29	+2.5	+0.5	+1.0
Acc	56%	56%	69%	60%	61%	62%	58%	55%	54%	46%	51%	45%

**LOT: 96****MULLUM FLARE 5 (AI) (P)****TATTOO: BLA G32E DOB: 31/12/2011****COMMENTS:**

Only Pilgram female in the sale, out of a well know cow family at Palgrove, big strong double polled cow.

EBV's show loads of growth and strong carcass traits.

Joined to "Honorable" 12/11/18 to 31/1/19

SVY PIONEER 402P MC288416 (PED -8416E)

WCR SIR FA MAC 2244 M234430 (OAU B2244E) (P)

**SIRE: SVY PILGRIM PLD 655S MC303031 (OAC B3031E) (P)****DAM: PALGROVE FLARE 72 (PK Z375E) (P)**

HFCC FRENCHKISS 919J PFC269584 (PED -9584E)

GUNNADOO EDIE 103D (GN1 G103D)

**March 2019 Australasian Charolais BREEDPLAN Analysis**

	CE Dir	GL	BW	200	400	600	Milk	SS	Carc Wt	EMA	Rump	IMF
EBV	-8.5	-3.7	+0.8	+16	+32	+46	+11	+1.8	+23	+1.7	+1.8	+0.8
Acc	55%	75%	67%	60%	59%	60%	57%	56%	53%	46%	51%	45%

**LOT: 97****MULLUM REFINE 3 (AI) (P)****TATTOO: BLA H36E DOB: 07/09/2012****COMMENTS:**

Medium framed big volumed female. Very low BW and positive calving ease EBV's with big carcass numbers.

An outstanding Polled Red Factor daughter sells at lot 85 she was purchased as calf at foot with this cow by Waterfall from GLENLEA's 2017 female sale.

Joined to "HONORABLE" 12/1/19 to 28/2/19 then to "KENWORTH" 1/3/19 to 11/4/19

LT ASSERTION 1277 M620193 (PED W1277F) (P)

PINAY 8552394134 (OAF U4134F)

**SIRE: LT BLUEGRASS 4017P M686569 (OAU Z4017E) (P)****DAM: MULLUM REFINE 1 (BLA E35E) (P)**

LT PEARLS BREEZE 2236 F956080 (PED X2236F) (P)

PALGROVE REFINE 115 (PK A301E) (P)

**March 2019 Australasian Charolais BREEDPLAN Analysis**

	CE Dir	GL	BW	200	400	600	Milk	SS	Carc Wt	EMA	Rump	IMF
EBV	+12.4	-6.8	-1.7	+11	+18	+17	+11	+1.2	+16	+3.1	+1.0	+1.0
Acc	56%	62%	69%	60%	59%	60%	57%	56%	55%	52%	54%	52%

**LOT: 98****JACKSON GABBY (P)**

TATTOO: MEJ G111E DOB: 17/08/2011

**COMMENTS:**

Big framed, big pelvic capacity polled cow. Powerful genetics with Impeccable x Ijoufflu sire. A daughter sells at Lot 81 with a bull calf at foot.

Joined to "KENWORTH"  
HOMOZYGOUS REFERENCE  
SIRE 12/1/19 to 11/4/19

TATTENHALL IMPECCABLE I26 MF0001382 (IAE I6190F) ROSEDALE SELECTOR (MR S39E) (P)  
**SIRE: CRATHES DR. IMPECCABLE (KRG D21F)** **DAM: ROSEDALE BUTTERSCOTCH X152 (MR X152E) (P)**  
 PALGROVE DESIRE 67 (PK X454F) ROSEDALE BUTTERSCOTCH U49 R/F (MR U49E) (P)



## March 2019 Australasian Charolais BREEDPLAN Analysis

	CE Dir	GL	BW	200	400	600	Milk	SS	Carc Wt	EMA	Rump	IMF
EBV	-3.1	-0.3	+1.7	+13	+19	+34	+9	+1.2	+16	+2.0	-0.1	+0.5
Acc	49%	48%	73%	55%	55%	58%	45%	43%	46%	38%	40%	36%

**LOT: 99****ORARA WATERFALL ISABELLA 4TH (P)(R/F)** TATTOO: WFA N52E DOB: 20/09/2017

**COMMENTS:** Double polled, Double Red Factor by "Honorable". Very balanced heifer that has strength in type and EBV's. Dam is a GOLD STAR lot, the first calf by JC LANNISTER (P) out of full sister who is Lot 42(Flush in Donor), sold at recent Charnelle sale for \$5250 at 12 month of age, and was top priced unjoined heifer. All these yearling heifers had very tough start and were weaned at lower weights than ideal, we have not supplementary fed these heifers except for some dry lick and they reached good joining weights when we A.I. them, they will grow out wherever they go and know how to forage and find a feed in tough times!

A.I. to JC LANNISTER (P) 26/2/19.  
EXPOSED CHALAMBI MUSCLES  
CHA M15E HOMOZYGOUS  
JOINING SIRE from 15/3/19

View the video of N52 at [www.glenleabeef.com.au](http://www.glenleabeef.com.au)

RANGAN PARK REDEMPTION E42 (RAN E42E) (P) RANGAN PARK RIO BRAVO D15 (RAN D15E) (P)  
**SIRE: GLENLEA HONOURABLE (VLW H25E) (P)** **DAM: GLENLEA ISABELLA 1ST (GLE K60E) (P)**  
 FERNVALE CHIFFON (FEN C22E) GOBONGO ISABELLA D86E (GO D86E) (P)



## March 2019 Australasian Charolais BREEDPLAN Analysis

	CE Dir	GL	BW	200	400	600	Milk	SS	Carc Wt	EMA	Rump	IMF
EBV	-5.5	-2.3	+1.0	+18	+36	+49	+10	+1.3	+28	+2.4	+1.4	+0.7
Acc	43%	50%	70%	51%	51%	52%	40%	40%	41%	32%	35%	32%



**LOT: 100****ORARA WATERFALL ELSA 68TH (P/S)**

TATTOO: WFA N35E DOB: 18/07/2017

View the video of N35 at [www.glenleabeef.com.au](http://www.glenleabeef.com.au)**COMMENTS:**

Extra overall yield in this powerful poll/scur heifer, will add punch to any sire. Ebv's show low BW, above breed average growth and top 10% EMA and retail beef yield.

A.I. 26/2/19 to RAN L84E HOMOZYGOUS POLLED, top 1% low birthweight (trait leader) sire with top 1% carcass traits, extremely rare genetic traits to find together in one animal, and with good growth!

EXPOSED CHALAMBI  
MUSCLES CHA M15E  
HOMOZYGOUS JOINING SIRE  
from 15/3/19

GLENLEA EDDIE (GLE E14E) (P)

**SIRE: GLENLEA JEDDI (VLW J15E) (P)**

FERNVALE BONNY MANDIE (FEN B24E)

ROSEDALE DINGA (MR D25E) (P)

**DAM: GLENLEA ELSA 61ST (GLE J24E) (P)**

GLENLEA ELSA 44TH (GLE F26E) (P)



## March 2019 Australasian Charolais BREEDPLAN Analysis

	CE Dir	GL	BW	200	400	600	Milk	SS	Carc Wt	EMA	Rump	IMF
EBV	+10.1	-2.3	-0.6	+12	+23	+33	+8	+0.5	+23	+2.1	-0.5	+0.0
Acc	35%	40%	63%	44%	45%	48%	32%	33%	36%	30%	32%	29%

**LOT: 101****ORARA WATERFALL ELLEN 2ND (P)(R/F)**

TATTOO: WFA N60E DOB: 14/10/2017

View the video of N60 at [www.glenleabeef.com.au](http://www.glenleabeef.com.au)**COMMENTS:**

This heifer is very eye appealing, deep, long, thick and soft. Double polled and Red Factor, the cross of "GRANDIOSE" and "Forged from Steel" daughters has produced some great progeny. EBV's are right were we like to see them below breed average BW, good growth top 20% EMA and Rump Fat.

A.I. to JC LANNSITER (P)  
26/2/19.

EXPOSED CHALAMBI  
MUSCLES CHA M15E  
HOMOZYGOUS JOINING SIRE  
from 15/3/19

EC NO DOUBT 2022 P M685500 (OAU Z2022E) (P)

**SIRE: LITTLE VALLEY GRANDIOSE (GKB G5E) (P)**

LITTLE VALLEY DOLLY (GKB D5E) (P)

BRANCH VIEW FORDGED FROM STEEL (BVC F34E) (P)

**DAM: ORARA WATERFALL ELLEN 1ST (WFA K20E) (P)**

JACKSON ELLEN (MEJ E24E) (P)



## March 2019 Australasian Charolais BREEDPLAN Analysis

	CE Dir	GL	BW	200	400	600	Milk	SS	Carc Wt	EMA	Rump	IMF
EBV	-1.2	-3.1	-0.1	+11	+22	+29	+7	+0.8	+18	+1.9	+1.3	+0.4
Acc	39%	43%	67%	45%	45%	47%	35%	33%	35%	27%	31%	27%

**LOT: 102****ORARA WATERFALL ASIA 1ST (P/S)****TATTOO: WFA N11E DOB: 11/03/2017**View the video of N11 at [www.glenleabeef.com.au](http://www.glenleabeef.com.au)

**COMMENTS:** Last "Hilton" daughter in sale, lost her mum when young and made her own way, we just moved her from the autumn mob to the spring mob and she is really starting to grow out now. Square, thick and so quiet, will make a great cow and breed some excellent progeny. Dam was a daughter of the \$61,000 Palgrove Valiant, and a grand old matron from the MYALL herd in QLD now dispersed.

A.I. 26/2/19 to RAN L84E HOMOZYGOUS POLLED, top 1% low birthweight (trait leader) sire with top 1% carcass traits, extremely rare genetic traits to find together, and with good growth!  
EXPOSED CHALAMBI  
MUSCLES CHA M15E  
HOMOZYGOUS JOINING SIRE from 15/3/19

RANGAN PARK REDEMPTION E42 (RAN E42E) (P)  
**SIRE: GLENLEA HILTON (GLE H30E) (P)**  
GLENLEA CAAROL X11E (GLE X11E)

PALGROVE VALIANT (PK V167E)  
**DAM: MYALL ASIA (MY A5142E) (P)**  
MYALL P263D (MY P263D)



## March 2019 Australasian Charolais BREEDPLAN Analysis

	CE Dir	GL	BW	200	400	600	Milk	SS	Carc Wt	EMA	Rump	IMF
EBV	-7.4	+0.2	+1.7	+15	+32	+48	+9	+0.8	+25	+1.7	+0.4	+0.5
Acc	38%	47%	67%	50%	51%	54%	39%	45%	42%	32%	34%	29%

**LOT: 103****ORARA WATERFALL GRACE 9TH (P)****TATTOO: WFA N57E DOB: 02/10/2017**View the video of N57 at [www.glenleabeef.com.au](http://www.glenleabeef.com.au)**COMMENTS:**

Moderate, double polled heifer with extra overall capacity, muscle and softness. Dam is a great producer and sells at LOT 16. Will grow out into another great cow. Ideal spread of EBV's from birth to 600 days and strong carcass traits

A.I. to JC LANNSITER (P) 26/2/19. EXPOSED CHALAMBI  
MUSCLES CHA M15E  
HOMOZYGOUS JOINING SIRE from 15/3/19

EC NO DOUBT 2022 P M685500 (OAU Z2022E) (P)  
**SIRE: LITTLE VALLEY GRANDIOSE (GKB G5E) (P)**  
LITTLE VALLEY DOLLY (GKB D5E) (P)

ROSEDALE DINGA (MR D25E) (P)  
**DAM: JACKSON GRACE (MEJ G26E) (P)**  
JACKSON ZIGGY (MEJ Z1E) (P)



## March 2019 Australasian Charolais BREEDPLAN Analysis

	CE Dir	GL	BW	200	400	600	Milk	SS	Carc Wt	EMA	Rump	IMF
EBV	-0.6	-2.6	-0.1	+12	+23	+36	+11	+0.8	+22	+1.8	+1.0	+0.2
Acc	41%	44%	69%	46%	47%	49%	35%	33%	35%	28%	31%	27%

**LOT: 104 ORARA WATERFALL GALA 4TH (P)**

TATTOO: WFA N43E DOB: 06/09/2017

View the video of N43 at [www.glenleabeef.com.au](http://www.glenleabeef.com.au)**COMMENTS:**

This heifer is exceptionally quiet, double polled, moves like a cat, just glides along and has plenty of eye appeal. Big volume, softness and performance. Dam sells at Lot 15 and is one of the best. EBV's top 15% 600 day EMA and Retail Beef yield.

A.I. to JC LANNSITER (P)  
26/2/19. EXPOSED CHALAMBI  
MUSCLES CHA M15E  
HOMOZYGOUS JOINING SIRE  
from 15/3/19

EC NO DOUBT 2022 P M685500 (OAU Z2022E) (P)  
**SIRE: LITTLE VALLEY GRANDIOSE (GKB G5E) (P)**  
LITTLE VALLEY DOLLY (GKB D5E) (P)

GLENLEA BIG GUN (GLE B10E) (P)  
**DAM: JACKSON GALA (MEJ G6E) (P)**  
JAY TEES ADELPHI (JT A12E) (P)



## March 2019 Australasian Charolais BREEDPLAN Analysis

	CE Dir	GL	BW	200	400	600	Milk	SS	Carc Wt	EMA	Rump	IMF
EBV	-15.0	-1.9	+2.3	+18	+32	+48	+7	+0.6	+26	+2.2	+0.5	+0.2
Acc	41%	46%	69%	47%	47%	49%	36%	35%	36%	28%	32%	27%

**LOT: 105 ORARA WATERFALL CINDY 3RD (P)**

TATTOO: WFA N54E DOB: 28/09/2017

View the video of N54 at [www.glenleabeef.com.au](http://www.glenleabeef.com.au)**COMMENTS:**

Lovely fine hair coat on this heifer, medium framed, very correct, double polled, dam sells at Lot 93. EBV's indicate moderate BW, above breed average growth and top 10% EMA.

A.I. to JC LANNSITER (P)  
26/2/19. EXPOSED CHALAMBI  
MUSCLES CHA M15E  
HOMOZYGOUS JOINING SIRE  
from 15/3/19

GLENLEA EDDIE (GLE E14E) (P)  
**SIRE: GLENLEA JEDDI (VLW J15E) (P)**  
FERNVALE BONNY MANDIE (FEN B24E)

GLENLEA BIG GUN (GLE B10E) (P)  
**DAM: GOODVIEW CINDY 2ND (HEL J6E) (P)**  
GOODVIEW CINDY (HEL C3E) (P)



## March 2019 Australasian Charolais BREEDPLAN Analysis

	CE Dir	GL	BW	200	400	600	Milk	SS	Carc Wt	EMA	Rump	IMF
EBV	+0.2	-1.1	+1.0	+14	+25	+35	+6	+0.7	+23	+2.5	-0.5	+0.0
Acc	35%	40%	67%	44%	45%	48%	31%	32%	35%	28%	29%	26%

**LOT: 106 ORARA WATERFALL BIANCA 3RD (P/S) TATTOO: WFA N36E DOB: 19/07/2017**



View the video of N36 at [www.glenleabeef.com.au](http://www.glenleabeef.com.au)

**COMMENTS:**

Long bodied, fine haired heifer poll/scur, will grow out into a big cow. Dam sells at Lot 18. Top 10% EMA and retail beef yield, would suit northern herds.

A.I. 26/2/19 to RAN L84E HOMOZYGOUS POLLED, top 1% low birthweight (trait leader) sire with top 1% carcass traits, extremely rare genetic traits to find together, and with good growth!

EXPOSED CHALAMBI MUSCLES CHA M15E HOMOZYGOUS JOINING SIRE from 15/3/19

GLENLEA EDDIE (GLE E14E) (P)  
**SIRE: GLENLEA JEDDI (VLW J15E) (P)**  
 FERNVALE BONNY MANDIE (FEN B24E)

GLENLEA BIG GUN (GLE B10E) (P)  
**DAM: GOODVIEW BIANCA 2ND (HEL J8E) (P)**  
 GOODVIEW BIANCA (HEL B1E) (P)

March 2019 Australasian Charolais BREEDPLAN Analysis												
Charolais GROUP BREEDPLAN	CE Dir	GL	BW	200	400	600	Milk	SS	Carc Wt	EMA	Rump	IMF
EBV	+2.2	-1.5	+0.6	+14	+24	+33	+6	+0.7	+23	+2.6	-0.5	+0.1
Acc	35%	39%	63%	43%	44%	47%	30%	32%	34%	27%	29%	26%

**LOT: 107 ORARA WATERFALL CONFIDENCE 10TH (P) TATTOO: WFA N59E DOB: 13/10/2017**



View the video of N59 at [www.glenleabeef.com.au](http://www.glenleabeef.com.au)

**COMMENTS:**

Very balanced heifer, fine hair coat, double polled. Lovely wide topline with great temperament. Dam sells at Lot 13 and is a sale feature, if you miss out on mum buy the daughter! Ebv's top 20% for 600 day, top 15% for EMA and Retail Beef Yield.

A.I. to JC LANNSITER (P) 26/2/19. EXPOSED CHALAMBI MUSCLES CHA M15E HOMOZYGOUS JOINING SIRE from 15/3/19

EC NO DOUBT 2022 P M685500 (OAU Z2022E) (P)  
**SIRE: LITTLE VALLEY GRANDIOSE (GKB G5E) (P)**  
 LITTLE VALLEY DOLLY (GKB D5E) (P)

GLENLEA BIG GUN (GLE B10E) (P)  
**DAM: GLENLEA CONFIDENCE 6TH (GLE H13E) (P)**  
 GOBONGO CONFIDENCE C13E (GO C13E) (P)

March 2019 Australasian Charolais BREEDPLAN Analysis												
Charolais GROUP BREEDPLAN	CE Dir	GL	BW	200	400	600	Milk	SS	Carc Wt	EMA	Rump	IMF
EBV	-12.2	-2.1	+2.0	+16	+31	+44	+8	+0.6	+25	+2.1	+0.1	+0.1
Acc	41%	44%	69%	49%	50%	52%	37%	35%	40%	31%	38%	28%

**LOT: 108****ORARA WATERFALL ROSLYN 1ST (P)**

TATTOO: WFA N53E DOB: 21/09/2017

View the video of N53 at [www.glenleabeef.com.au](http://www.glenleabeef.com.au)**COMMENTS:**

This heifer has a powerful dam full of French bloodlines that sells at Lot 50. She should develop into a powerful cow herself, polled with added softness from her proven sire "Grandiose" a good blend of French and Polled genetics. EBV's at the top of the performance curve, top 10% 600 day with top 5% EMA and Retail Beef Yield.

A.I. to JC LANNSITER (P) 26/2/19. EXPOSED CHALAMBI MUSCLES CHA M15E HOMOZYGOUS JOINING SIRE from 15/3/19

EC NO DOUBT 2022 P M685500 (OAU Z2022E) (P)  
**SIRE: LITTLE VALLEY GRANDIOSE (GKB G5E) (P)**  
 LITTLE VALLEY DOLLY (GKB D5E) (P)

PINAY 8552394134 (OAF U4134F)  
**DAM: PIPECLAY E2E (ROL E2E)**  
 COBRABALD OFFSHORE X85 (ASH X85E)



## March 2019 Australasian Charolais BREEDPLAN Analysis

	CE Dir	GL	BW	200	400	600	Milk	SS	Carc Wt	EMA	Rump	IMF
EBV	-16.4	-3.1	+2.5	+18	+32	+49	+8	+0.3	+28	+3.0	+0.0	+0.4
Acc	43%	50%	68%	48%	48%	50%	40%	39%	40%	33%	37%	33%

**LOT: 109****ORARA WATERFALL CONFIDENCE 11TH (P)**

TATTOO: WFA N58E DOB: 02/10/2017

View the video of N58 at [www.glenleabeef.com.au](http://www.glenleabeef.com.au)**COMMENTS:**

Long bodied balanced heifer with a really kind eye. Very gentle, from the Confidence cow family her dam would have been in sale but developed mastitis and so was not catalogued, big volumed, moderate framed thick good doing female, and N58 will grow out the same. Double Polled. EBV's once again show that ideal birth to growth curve with top of breed carcass traits, can't go wrong with heifers like this.

A.I. to JC LANNSITER (P) 26/2/19. EXPOSED CHALAMBI MUSCLES CHA M15E HOMOZYGOUS JOINING SIRE from 15/3/19

EC NO DOUBT 2022 P M685500 (OAU Z2022E) (P)  
**SIRE: LITTLE VALLEY GRANDIOSE (GKB G5E) (P)**  
 LITTLE VALLEY DOLLY (GKB D5E) (P)

GLENLEA EDDIE (GLE E14E) (P)  
**DAM: GLENLEA CONFIDENCE 11TH (GLE J13E) (P/S)**  
 GOBONGO CONFIDENCE C13E (GO C13E) (P)



## March 2019 Australasian Charolais BREEDPLAN Analysis

	CE Dir	GL	BW	200	400	600	Milk	SS	Carc Wt	EMA	Rump	IMF
EBV	-2.9	-2.6	+0.8	+15	+28	+39	+9	+0.8	+24	+2.3	+0.5	+0.4
Acc	41%	44%	69%	47%	47%	49%	37%	35%	36%	29%	32%	28%

**LOT: 110****ORARA WATERFALL JANET 10TH (P)**

TATTOO: WFA N66E DOB: 16/10/2017

View the video of N66 at [www.glenleabeef.com.au](http://www.glenleabeef.com.au)**COMMENTS:**

This is a good one! Dam is a very powerful cow and sells as Lot 94. Fine hair coat, double polled extra overall yield and body shape. Strong broad head and muzzle, will breed some powerful progeny.

EBV's have that have that moderate BW good growth and extra carcass, Top 10% EMA and Retail Beef Yield.

A.I. to JC LANNSITER (P) 26/2/19. EXPOSED CHALAMBI MUSCLES CHA M15E HOMOZYGOUS JOINING SIRE from 15/3/19

GLENLEA EDDIE (GLE E14E) (P)

GLENLEA BIG GUN (GLE B10E) (P)

**SIRE: GLENLEA JEDDI (VLW J15E) (P)****DAM: GLENLEA JANET 61ST (GLE H16E) (P)**

FERNVALE BONNY MANDIE (FEN B24E)

GLENLEA JANET 26TH R/F (PS) (GLE C8E) (P)



## March 2019 Australasian Charolais BREEDPLAN Analysis

	CE Dir	GL	BW	200	400	600	Milk	SS	Carc Wt	EMA	Rump	IMF
EBV	+1.8	-2.4	+0.5	+14	+23	+34	+8	+0.7	+22	+2.6	-0.9	+0.0
Acc	37%	43%	68%	49%	50%	53%	34%	36%	41%	33%	38%	30%

**LOT: 111****GLENLEA KARANA 3RD (P) (R/F)**

TATTOO: GLE N175E DOB: 21/11/2017

**COMMENTS:**

These next 5 heifers are off another property near Grafton, are outcross bloodlines to the Waterfall heifers and were not at Waterfall when we A.I.ed the rest so have been joined to the Chalambi Muscles sire only who is a proven calving ease sire.

N175 is moderate framed, early maturing Red factor heifer, several months younger than most of the rest and out of a Gobongo Matron, that's been a great producer. Sired By "KENWORTH" Reference sire.

Joined to Chalambi Muscles CHA M15E from 24/3/19.

RANGAN PARK RIO BRAVO D15 (RAN D15E) (P)

ADVANCE XR8 (ADV X50E)

**SIRE: GLENLEA KENWORTH (GLE K80E) (P)****DAM: GOBONGO KARANA E376E (GO E376E)**

THW TATT MAC D10E (THW D10E) (P)

MIXHILL YIN ALPHA (MIX Y204E)



## March 2019 Australasian Charolais BREEDPLAN Analysis

	CE Dir	GL	BW	200	400	600	Milk	SS	Carc Wt	EMA	Rump	IMF
EBV	-0.6	-2.5	+0.9	+14	+27	+39	+8	+0.7	+21	+1.9	-0.1	+0.6
Acc	36%	40%	58%	44%	43%	44%	36%	35%	35%	28%	30%	28%

**LOT: 112 WATERFALL ELLEN 4TH (P)**

TATTOO: GLE N158E DOB: 10/09/2017

**COMMENTS:**

A long bodied, easy doing type from an excellent Jackson matron E24. Double polled, Has that low BW EBV's and top 1% of breed for Rump Fat so can handle a power sire to breed bulls for the north or a moderate bull and get super soft bulls to sell in southern markets.

Joined to Chalambi Muscles CHA M15E from 24/3/19.

RANGAN PARK RIO BRAVO D15 (RAN D15E) (P)  
**SIRE: CLARINDA DOUBLE (KEN F7E) (P)**  
 PARINGA RIO BRAVO C58E (TOL C58E) (P)

ROSEDALE AXLE (MR A104E) (P)  
**DAM: JACKSON ELLEN (MEJ E24E) (P)**  
 VEEJAY DOWNS NOUGAT X24E (VJ X24E) (P)



## March 2019 Australasian Charolais BREEDPLAN Analysis

	CE Dir	GL	BW	200	400	600	Milk	SS	Carc Wt	EMA	Rump	IMF
EBV	+0.5	-4.5	-0.7	+11	+20	+24	+6	+0.8	+12	+1.1	+2.7	+1.1
Acc	37%	40%	64%	47%	48%	50%	39%	37%	40%	33%	39%	33%

**LOT: 113 GLENLEA EVE 2ND (P)**

TATTOO: GLE N350E DOB: 03/07/2017

**COMMENTS:**

Very similar to previous heifer and again out of excellent Jackson Matron E37. Double polled by "Kenworth" showing that little more overall volume and yield, with Low BW and top 5% Rump fat. Would make a great pair to travel together.

Joined to Chalambi Muscles CHA M15E from 24/3/19.

RANGAN PARK RIO BRAVO D15 (RAN D15E) (P)  
**SIRE: GLENLEA KENWORTH (GLE K80E) (P)**  
 THW TATT MAC D10E (THW D10E) (P)

ROSEDALE AXLE (MR A104E) (P)  
**DAM: JACKSON EVE (MEJ E37E) (P)**  
 JACKSON BRONTE (MEJ B37E) (P)



## March 2019 Australasian Charolais BREEDPLAN Analysis

	CE Dir	GL	BW	200	400	600	Milk	SS	Carc Wt	EMA	Rump	IMF
EBV	+3.6	-3.7	-0.6	+11	+20	+25	+7	+0.8	+15	+1.7	+1.9	+0.8
Acc	34%	38%	59%	45%	45%	48%	34%	33%	37%	30%	36%	30%

**LOT: 114 GLENLEA BARDOT 1ST (P)**

TATTOO: GLE N352E DOB: 05/08/2017



**COMMENTS:**

Lovely heifer, volume, quiet, easy doing and Polled. Dam B6 Goodview matron is still in herd at 13 years and producing and is also the Dam of Lot 17 who has the exciting Red Polled Louis stud sire prospect P70 at foot. These type of heifers will be in your herd for the long haul and are a great investment.

Joined to Chalambi Muscles CHA M15E from 24/3/19.

RANGAN PARK RIO BRAVO D15 (RAN D15E) (P)  
**SIRE: CLARINDA DOUBLE (KEN F7E) (P)**  
 PARINGA RIO BRAVO C58E (TOL C58E) (P)

PALGROVE WISDOM (PK W328E) (P)  
**DAM: GOODVIEW BARDOT (HEL B6E) (P)**  
 GOODVIEW YUM YUM (HEL Y3E)

Charolais GROUP BREEDPLAN	March 2019 Australasian Charolais BREEDPLAN Analysis											
	CE Dir	GL	BW	200	400	600	Milk	SS	Carc Wt	EMA	Rump	IMF
EBV	-1.1	-4.1	+0.1	+15	+28	+39	+8	+1.1	+20	+1.5	+1.8	+1.2
Acc	37%	39%	62%	43%	44%	45%	37%	36%	36%	30%	32%	30%

**LOT: 115 GLENLEA CHLOE 2ND (P)**

TATTOO: GLE N351D DOB: 01/08/2017



**COMMENTS:**

A great heifer nearly at the end of the sale, she could easily been 15 lots earlier! Volume, loose hide, long bodied easy doing. Great head and jaw with broad muzzle. Her Dam, C7292 is great Red factor Myall matron that at 12 years is about to wean her 2018 calf, longevity here! Total outcross genetics on the Dam side.

Joined to Chalambi Muscles CHA M15E from 24/3/19.

RANGAN PARK RIO BRAVO D15 (RAN D15E) (P)  
**SIRE: CLARINDA DOUBLE (KEN F7E) (P)**  
 PARINGA RIO BRAVO C58E (TOL C58E) (P)

MYALL ZOOLANDER (MY Z15D)  
**DAM: MYALL CHLOE (MY C7295C)**  
 MYALL AVAL (MY A5131B)

Charolais GROUP BREEDPLAN	March 2019 Australasian Charolais BREEDPLAN Analysis											
	CE Dir	GL	BW	200	400	600	Milk	SS	Carc Wt	EMA	Rump	IMF
EBV	+2.1	-3.2	-0.4	+12	+23	+32	+8	+0.7	+19	+1.8	+1.5	+0.9
Acc	32%	37%	60%	45%	45%	46%	35%	35%	36%	28%	30%	27%



## NOTES



*GLENLEA BEEF has been working with Pinedock Fitting, James and Jane Dockrill for several years now, and always hit our presentation targets with our cattle, whether its breaking in show cattle, feeding bulls for sales or and clipping taking photos of the GLENLEA cattle under their management. Often James and Jane receive direct sales enquiries and have negotiated several high value sales. There are an integral part of the GLENLEA team now and we plan that to continue for years to come.*



*This is a photo daughter of ISADOR, a weaner heifer. GLENLEA Selected this sire to use based on vision of the bull, his progeny and the performance data provided by CHAROLAIS OPTIMAL in France. ISADOR IS HOMOZYGOUS POLLED.*

**DROUGHT BUSTER**



# CHAROLAIS FEMALE SALE

Thursday 18 April 2019 - AUCTIONS PLUS

Please email completed form to:  
Stud Principal Roderick Binny  
P: 0409 911 791  
E: [rbinny@australiangrassfedmeats.com](mailto:rbinny@australiangrassfedmeats.com)

Name: \_\_\_\_\_

Address: \_\_\_\_\_

Phone: \_\_\_\_\_

Account To: \_\_\_\_\_

PIC NO: \_\_\_\_\_

Lot numbers purchased: \_\_\_\_\_

Society registration transfer required? Y / N  
\_\_\_\_\_

### Transport arrangements, please give details:

Name of Carrier: \_\_\_\_\_

Phone number: \_\_\_\_\_

Destination: \_\_\_\_\_

Insurance required: \_\_\_\_\_

Transfer Registration to: \_\_\_\_\_

Other instructions: \_\_\_\_\_

Agent: \_\_\_\_\_

Buyers Signature: \_\_\_\_\_

Date: \_\_\_\_\_

**NO VERBAL INSTRUCTIONS ACCEPTED**

## JOINING SIRE: JC LANNISTER L1 (AI) (P)

**TATTOO:** CJC L1E

**DOB:** 26/07/2015

**COMMENTS:**

Selected at the RANGAN PARK sale 2017 as top priced bull for \$15,000. Already a trait leader for 200 day weight, with explosive early growth and great carcass merit, in a early maturing body type.

Semen available \$50 per straw.



GAUGUIN (O AFL859F)

LT BLUEGRASS 4017P M686569 (OAUZ4017E) (P)

**SIRE:** RANGAN PARK GAUGUIN C15 (RANC15E) (AI) (ET) (P) **DAM:** RANGAN PARK NANETTE H102 (RAN H102E) (AI) (P)

PALGROVE SHOW GIRL 6 (PKP82E) (AI) (P)

RANGAN PARK NANETTE D34 (RAND34E) (AI) (ET) (P/S)

March 2019 Australasian Charolais BREEDPLAN Analysis														
Charolais GROUP BREEDPLAN	CE Dir	GL	BW	200	400	600	MCW	Milk	SS	Carc Wt	EMA	Rump	RBY	IMF
EBV	+4.9	-5.7	-0.1	+21	+31	+38	+46	+5	+1.5	+17	+1.0	+0.9	-1.1	+1.8
Acc	62%	85%	85%	75%	74%	71%	68%	58%	64%	61%	50%	57%	54%	50%

## JOINING SIRE: CHALLAMBI NORMAN (AI) (ET) (P)

**TATTOO:** CHA N13E

**DOB:** 29/07/2017

**COMMENTS:**

Extra power and growth with moderate BW, selected as top priced bull at HUON/CHALAMBI on property sale 2018 for top price of \$10,000 at 14 months of age.

Semen not currently available



LT WESTERN EDGE 4057 PLD M686616 (OAUZ6616E)(P)

HARVIE REDEMPTION 36P MC286641(OAC26641E)(P)(R/F)

**SIRE:** ASCOT GALAXY G131 (JAJG131E) (AI) (ET) (P)

**DAM:** GOBONGO ISABELLA D86E (GOD86E) (AI)(ET)(P)(R/F)

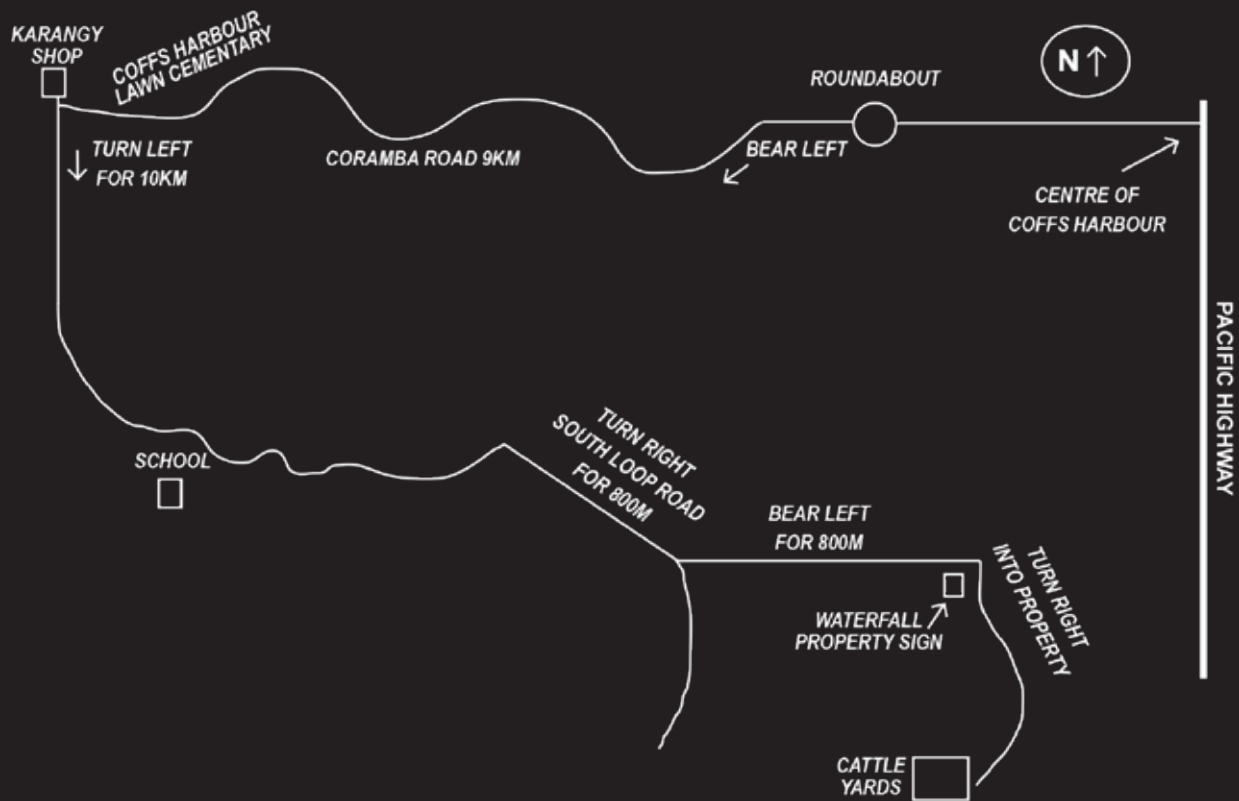
ROSDALE BOBBIN Y74 (MRY74E) (P)

GOBONGO ISABELLA (GO T48E)

March 2019 Australasian Charolais BREEDPLAN Analysis														
Charolais GROUP BREEDPLAN	CE Dir	GL	BW	200	400	600	MCW	Milk	SS	Carc Wt	EMA	Rump	RBY	IMF
EBV	-0.8	-1.8	+0.1	+15	+35	+49	+35	+14	+2.1	+27	+1.5	+1.6	-0.3	+0.2
Acc	48%	53%	70%	62%	60%	61%	58%	50%	56%	52%	45%	49%	46%	44%

## OPEN WEEKEND

Saturday 13 & Sunday 14 April from 10am to 4pm  
at 128 Friday Creek Road, Upper Drara - only 15 minutes from Coffs Harbour.



GOLD STAR LOT 2, WFA L44E, FIRST CALVER AND HER STUNNING "LOUIS" HEIFER CALF.

VIEW VIDEOS OF ALL LOTS AT [WWW.GLENLEABEEF.COM.AU](http://WWW.GLENLEABEEF.COM.AU)