



auctionsplus
agricultural auctions at a click

ASSESSOR REFERENCE CARD

STORE SHEEP (Current as at March 2015)

STOCK CATEGORY

Suckers	Unweaned lambs	No permanent incisors
Lambs	Weaned lambs	No permanent incisors
Hoggets	Any sex	Up to 2 permanent incisors
Ewes	Females	
Ewes & Lambs	Females with lambs at foot	
Wethers	Castrated males	
Ewes & Wethers	Mixed sex	One or more permanent incisors
Rams	Entire males	
Goats	Any age, any sex	

SEX CODE

Wether	Castrated male
Ewe	Female
Mixed Sex	Nominate Sex Composition
Ram	Entire male

SALE TYPES

H	\$ per head
L	c per kg liveweight
C	c per kg carcase weight

BREED COMPOSITION

Example

Description	Sire	Dam
Pure	Merino	Merino
1st Cross	Border Leicester	Merino
2nd Cross	Poll Dorset	Border/Merino
Other	Dorper	F3 Dorper

GRAZING CONDITIONS

Nominate prior to and following assessment.

STOCK HISTORY

Where bred—if purchased, nominate district of origin

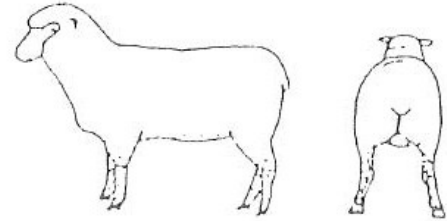
GENERAL SKIN/WOOL COMMENT

Note any seed penetration into skin as well as the health and colour of skin.

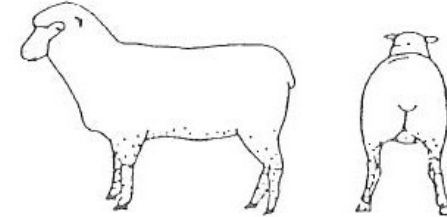
Note additional burr or skin details.

BURR & SEED

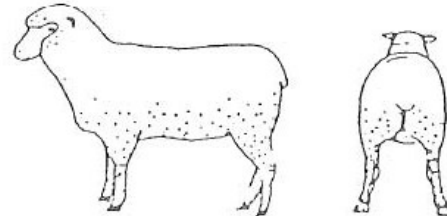
Very Light



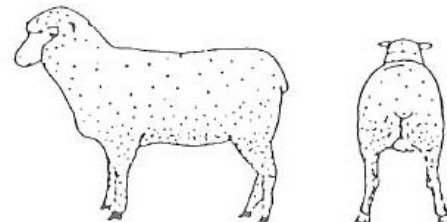
Light



Medium



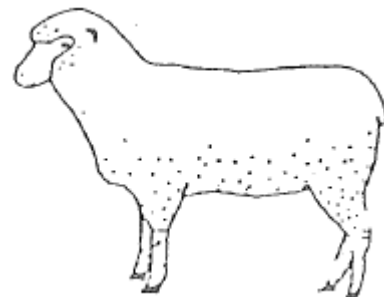
Heavy



Note: These standards apply in all areas.

SEED IDENTIFICATION POINTS

1. Brisket, Shoulder, Neck
2. Lower Rib, Belly
3. Hind Leg, Breech
4. Head



LIVE WEIGHING

1. Test scales for accuracy prior to every assessment.
2. Record weights of a representative sample:
Minimum 30% for one deck
Minimum 25% for two decks
Minimum 20% for three or more decks
3. Record time off feed and water

SKIN LENGTH

Inches	MM
0.0 - 0.25	0 - 5
0.25 - 0.5	6 - 13
0.5 - 1.0	14 - 25
1.0 - 1.5	26 - 38
1.5 - 2.0	39 - 51
2.0 - 2.5	52 - 64
2.5 - 3.0	65 - 76
3.0+	77+

Measure mid back position.

Note: Skins are usually traded in imperial measurements, not metric.

STANDARD LIVEWEIGHT RANGES

Class	Weight kg	Class	Weight kg
16	Below 16	40	36-40
20	16 -20	44	40-44
24	20-24	48	44-48
28	24-28	52	48-52
32	28-32	56	Over 52
36	32-36		

ADDITIONAL SKIN DETAIL

Information to be sourced from "Wool Reports" - micron, wool cuts and yield of the lot being assessed.

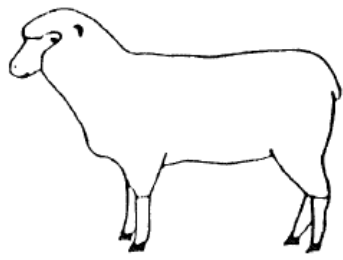
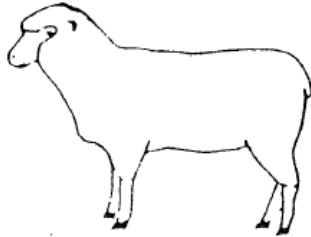
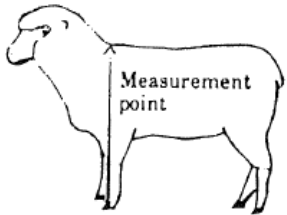
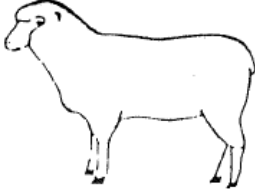
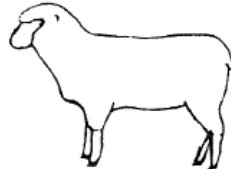
STORE STOCK BREEDING QUALITY

Should not be confused with condition - relates to the Breeding Quality of the line being assessed.

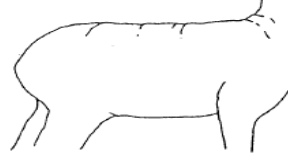

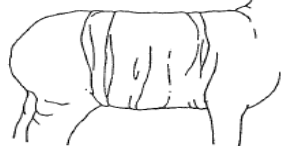



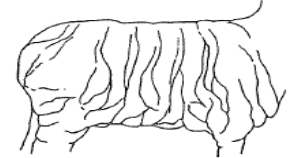
EXCELLENT	Top sires used, with high standards of selection and management, ie the very small percentage of REALLY first class stock.
VERY GOOD	Quality sires used. Large frame. Structurally sound. Strict selection criteria used. Will realise full potential.
GOOD	Exhibiting some better characteristics of the breed, and showing evidence of some reasonable selection practices. Medium to large frame.
FAIR	Limited potential. Lacking better characteristics of the breed. Small to medium frame.
PLAIN	Very poor quality, with structural or conformation faults. Limited future growth and fattening potential. Very small frame.

FRAME SCORES

Height from ground to highest point of withers (shoulders) in centimetres, less skin length.

A		More than 71cm
B		66-70cm
C		61-65cm
D		56-60cm
E		55cm and less

WRINKLE SCORES

	Plain (1)	
	Light (2)	
	Medium (3)	
	Heavy (4)	